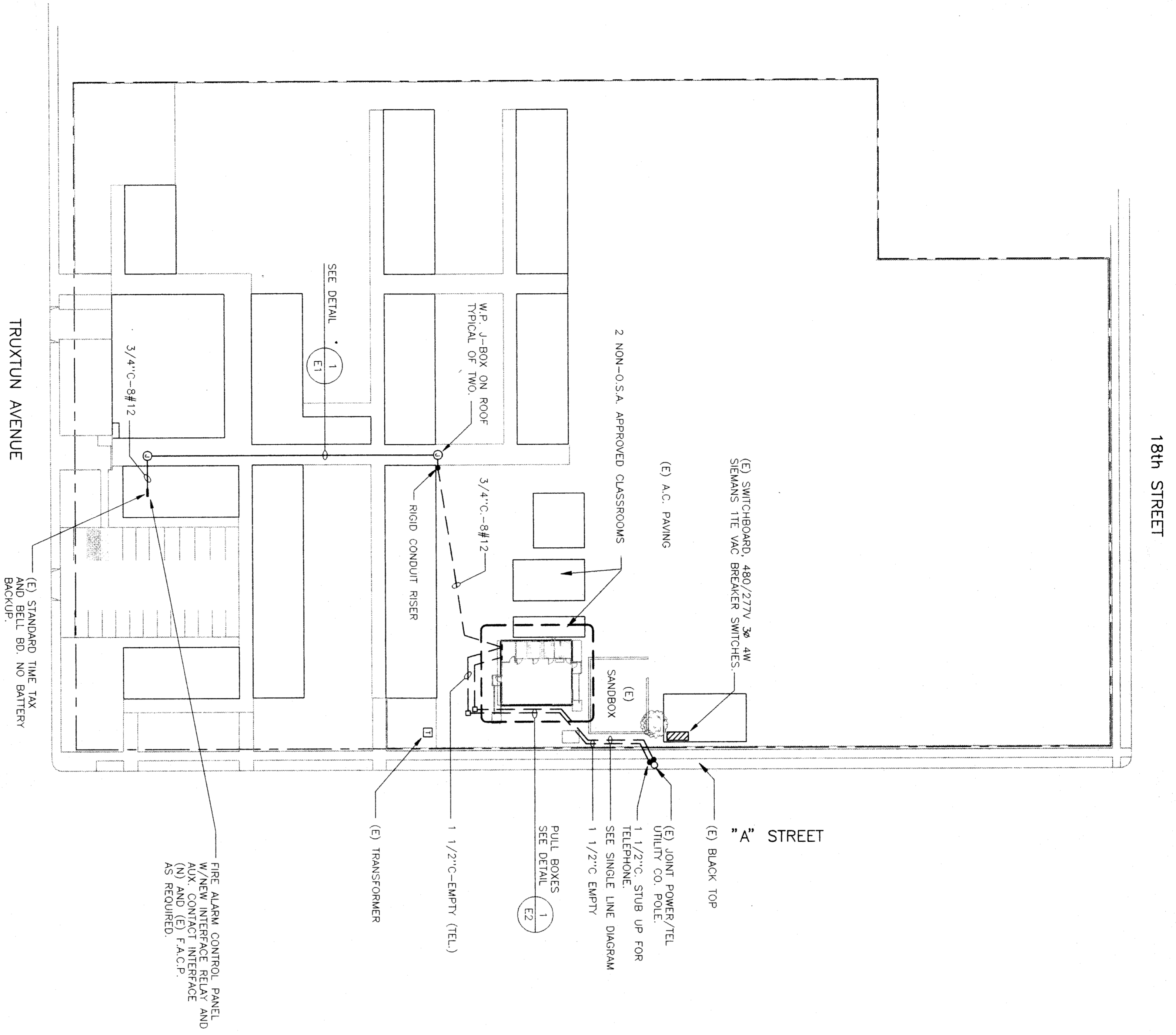
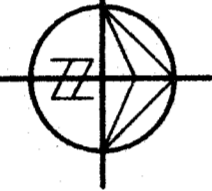


ELECTRICAL SITE PLAN

FRANKLIN SCHOOL

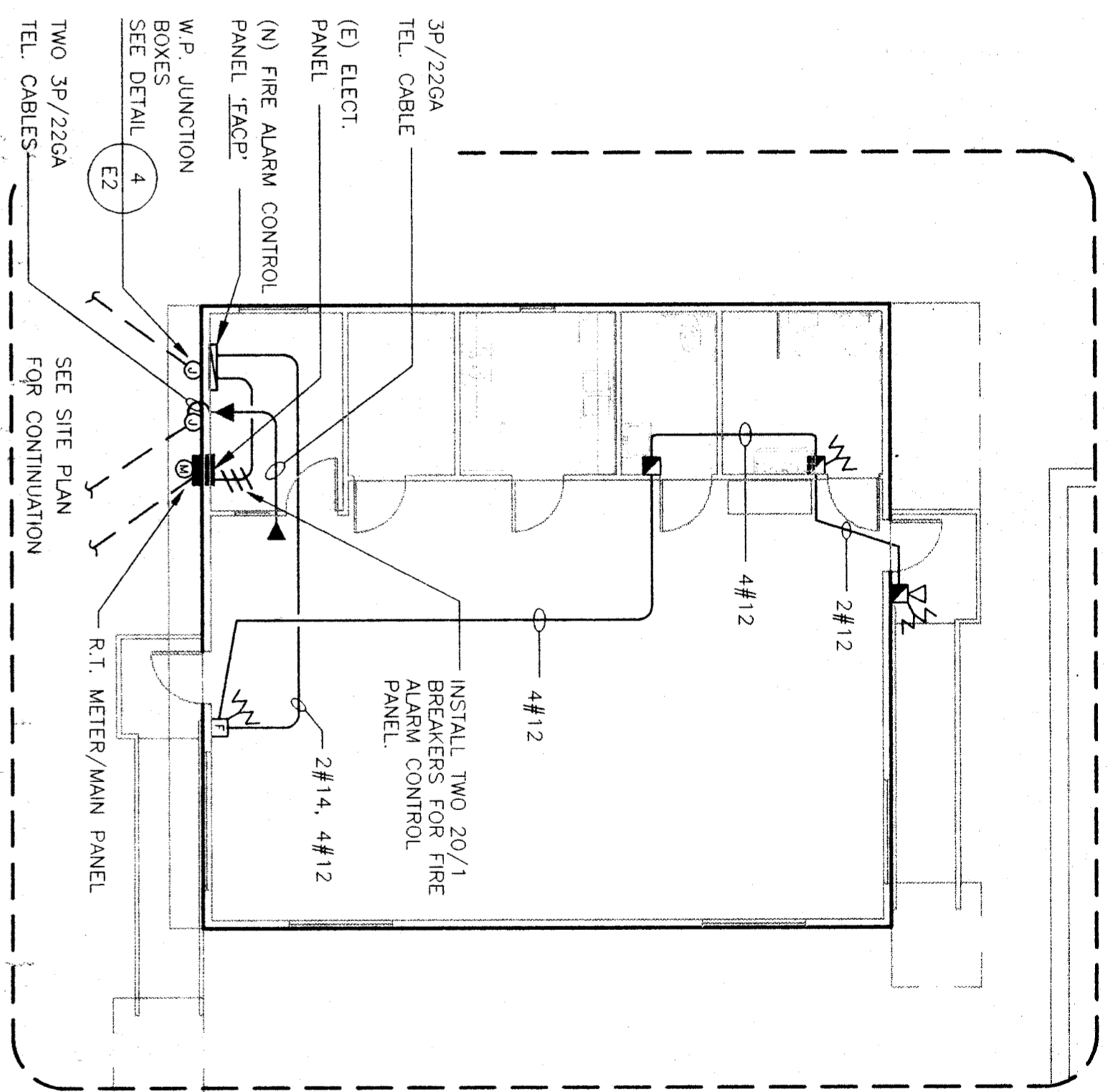
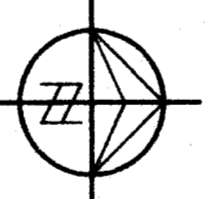
SCALE: 1" = 40'-0"



PARTIAL PLAN

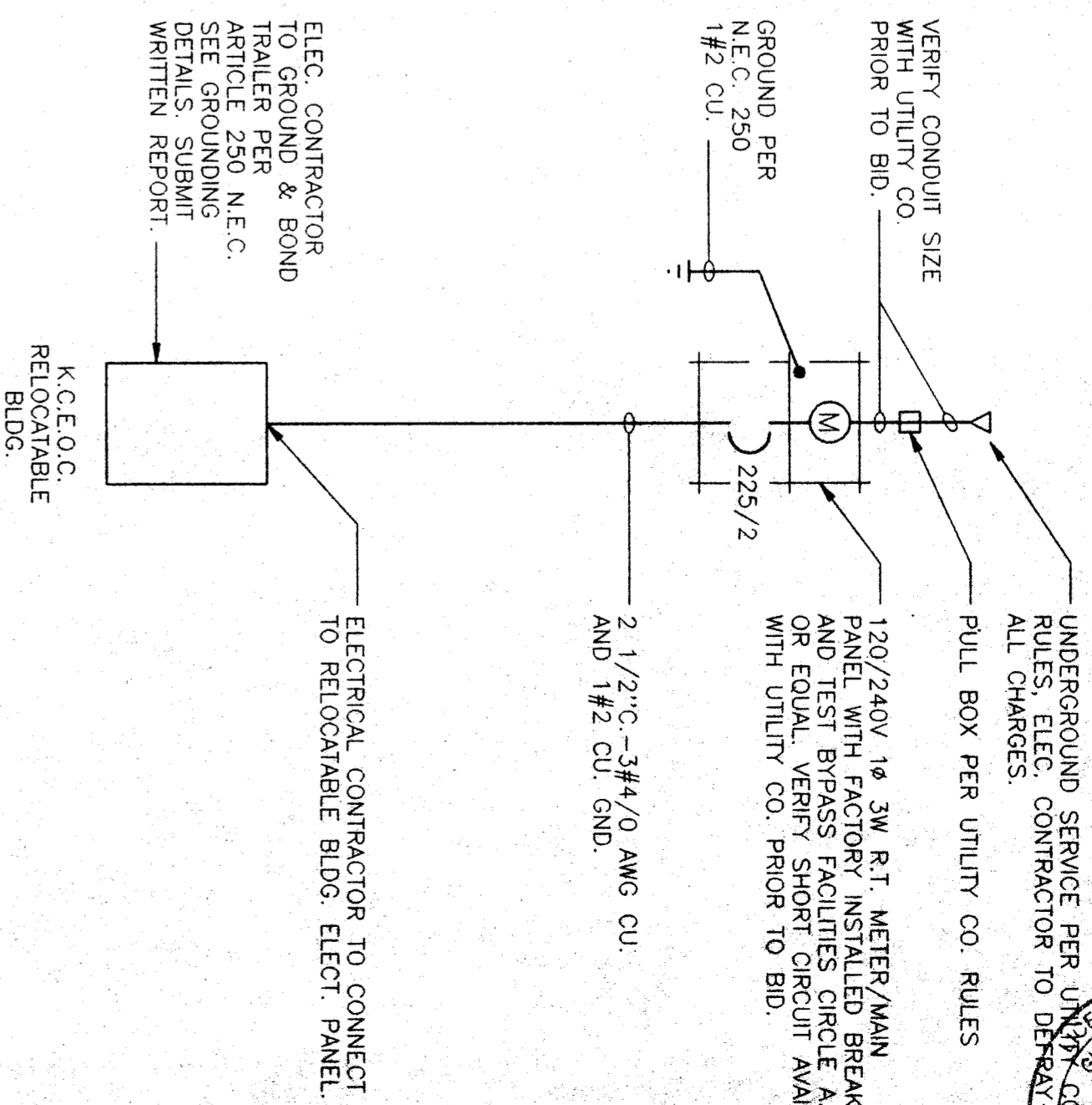
FRANKLIN SCHOOL

SCALE: 1/8" = 1'-0"



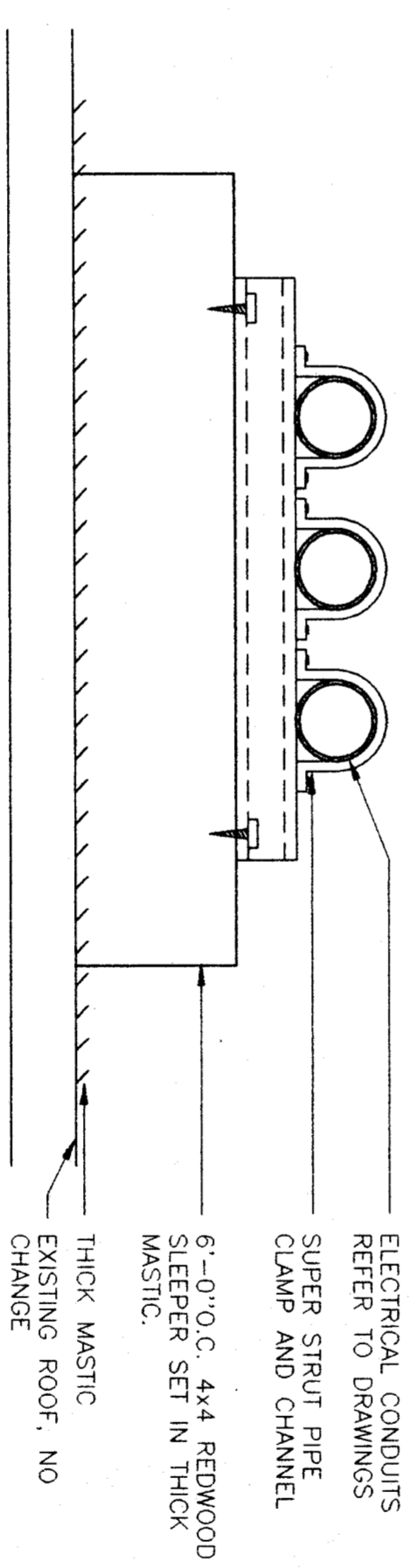
SINGLE LINE DIAGRAM

NO SCALE

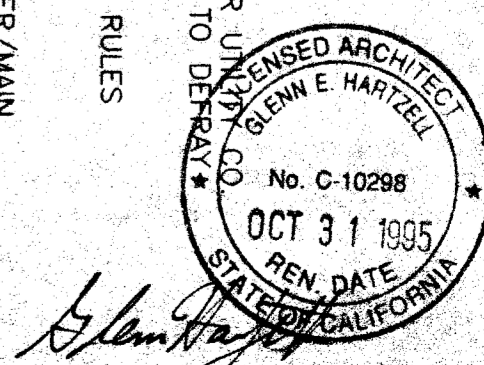
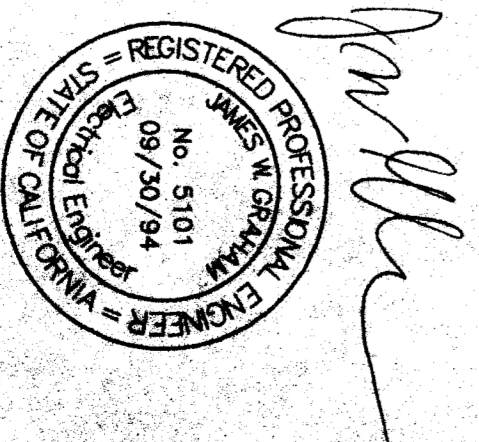


CONDUIT SUPPORT DETAIL

NO SCALE



UTILITY COMPANY	P.G. & E.
UTILITY CO. JOB REF. NO.	
TELEPHONE NO.	(805) 398-5965
ADDRESS	1918 'H' ST.
	BAKERSFIELD CA. 93301
CONTRACT	TOM AGUILAR



ELECTRICAL SITE PLAN ~ PARTIAL PLAN ~ SINGLE LINE DIAGRAM
 (SITE DEVELOPMENT) HEADSTART RELOCATABLE
 K.C.E.O.C. AT FRANKLIN SCHOOL
 BAKERSFIELD CITY SCHOOL DISTRICT
 2400 TRUXTUN AVE., BAKERSFIELD, KERN COUNTY, CALIFORNIA

DATE: 2-8-94
 DRAWN: R. L. M.

INTERSTATE ENGINEERING, INC.
 2727 N. GROVE INDUSTRIAL DR., BLDG. 155, STE. B
 FRESNO, CA 93727 (209)453-9491
 JAMES W. GRAHAM, E.E. 5101

Glenn Hartzell-Architect, inc.
 26 'H' STREET, 93304 (805) 324-6416
 P.O. BOX 2344, 93303, BAKERSFIELD, CALIFORNIA
 ARCHITECT C-10298

SHEET NO. 198 D
 DATE: APRIL 6 1994
 E2