

PANEL A 100 A BUS 100A MAIN 120/200 VOLT 1 PHASE 3 WIRE

GROUP	RECEPT	OUTLETS	OTHER	HATRICE	SWITCH	AMP	POLE	REMARKS
1	6	1100	CLOCK	1404	20	1		
2	4	720						
3	4	1502						
4	21	3130						4 TON UNIT W/NO HEAT STRIP
5								
6								
7								
8								
9								
10								
11								
12								
TOTALS								5634 5432 = 11066 5320 <small>amps</small> <small>cont.</small>
LCL x 1.25% = 1157.5								
OTHER = 1820.0								
LCL = 924.6								13377.5 64.35 <small>amps</small>

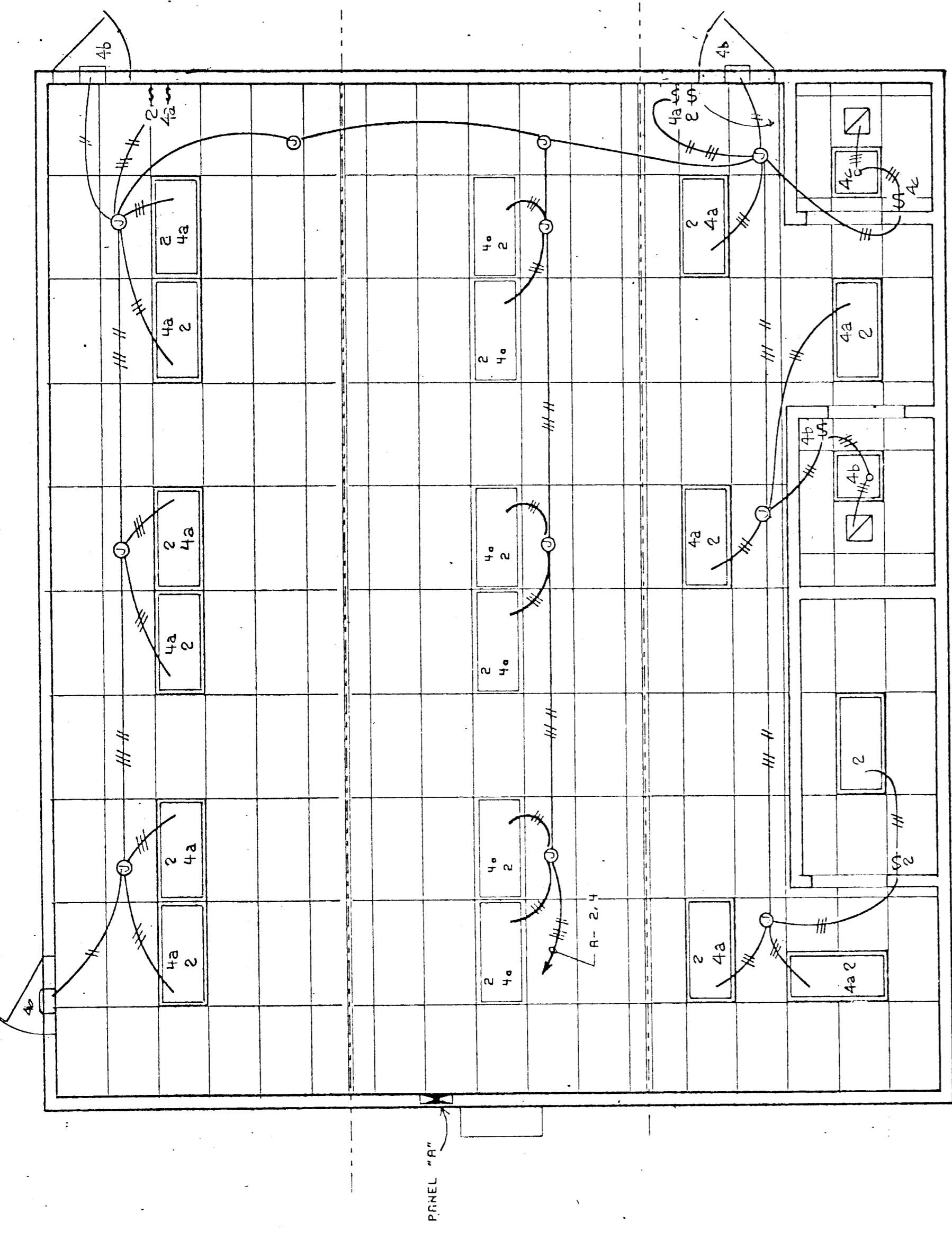
ELECTRICAL LEGEND

SYMBOL	DESCRIPTION
⊕+48"	DUPLEX RECEPT- 150 125V 3 WIRE GROUNDING TYPE. "GFI" DENOTES GROUND FAULT INTERRUPTER
⊕+48"	LIGHT SWITCH- SINGLE POLE
⊙	JUNCTION BOX
BP	BY-PASS TIMER
F	DISCONNECT SWITCH- FUSED, RAINTIGHT, SIZED AS NOTED
⊕+48"	THERMOSTAT
⊕+8'-0"	CLOCK
⊕+8'-0"	PULL STATION (BT OTHERS)
⊕+8'-0"	FIRE ALARM HORN (EXTERIOR) (BT OTHERS)
⊕	VISUAL WARNING LIGHT- WHEN INDICATED ON ELECTRICAL PLAN. (BT OTHERS)

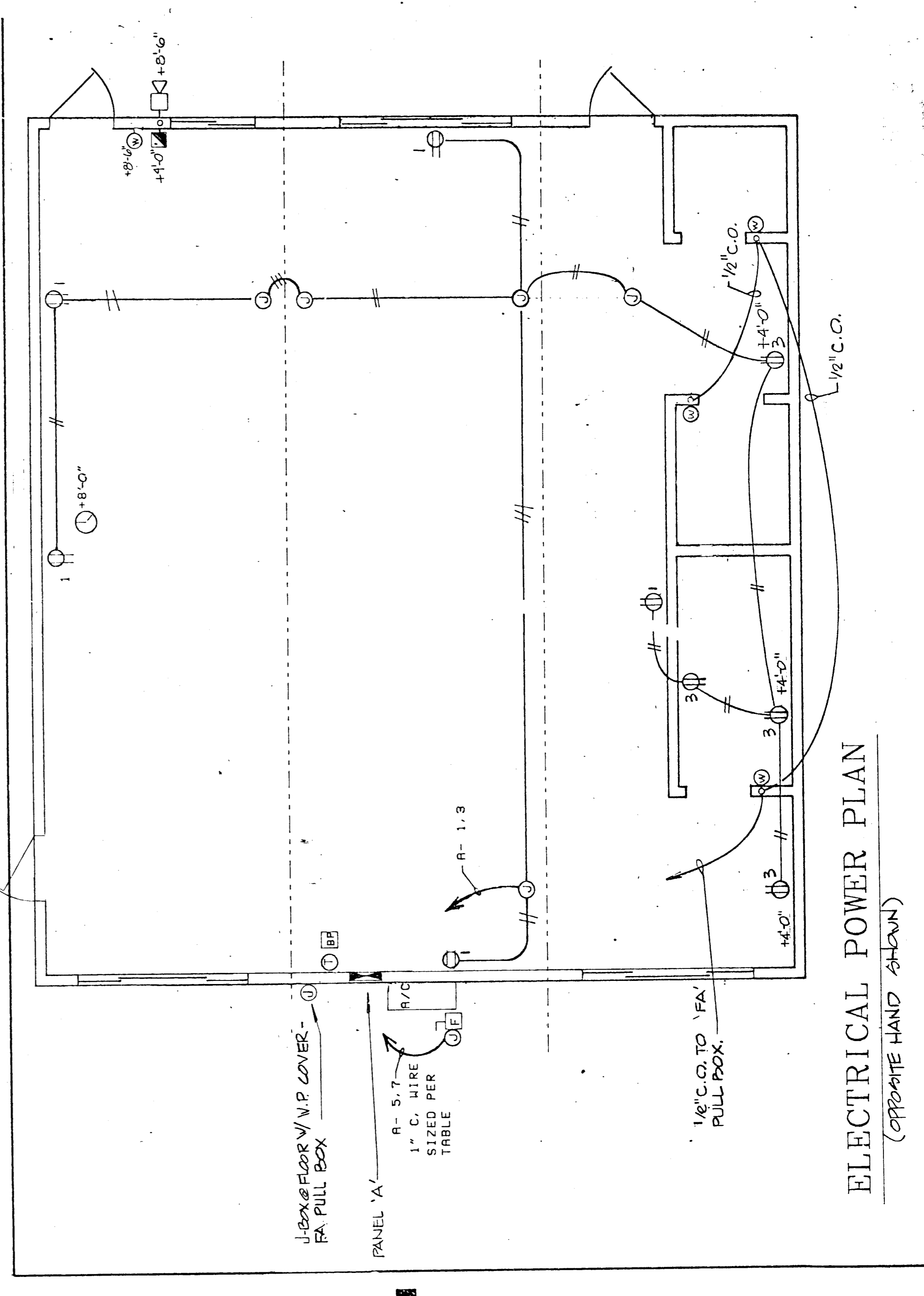
Installation shall not be started until detail plans, specifications and engineering calculations have been accepted and signed by the Architect or Structural Engineer in general charge of design and the signature of the architect or professional engineer shall be required on the particular plan or specification, and approved by the Office of the State Architect.

FIXTURE SCHEDULE

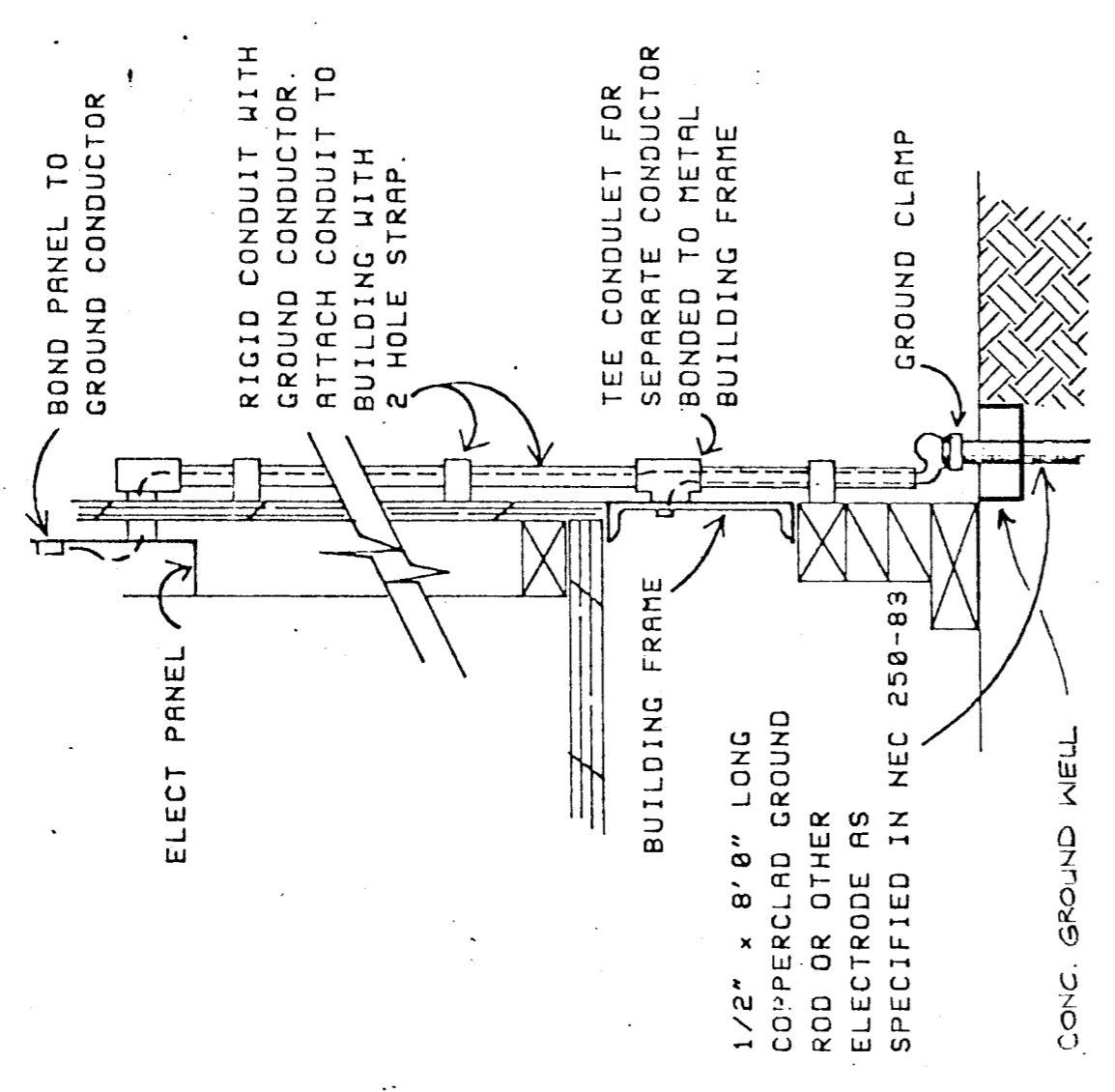
TYPE	SYMBOL	DESCRIPTION	WATTS	MANUFACTURER
	⊕	2x4 DROP-IN FLUORESCENT FIXTURE W/ ACRYLIC PRISMATIC LENS, ENERGY SAVING BALLAST (G) 30 WATT TUBES	156 W.	CRESCENT 24TE440DLA
	⊕	HID-50 WATT H.P.S. VANDAL RESISTANT LENS-TAMPER PROOF HARDWARE-RECEIVED.	50 W.	



ELECTRICAL POWER PLAN
(OPPOSITE HAND SHOWN)

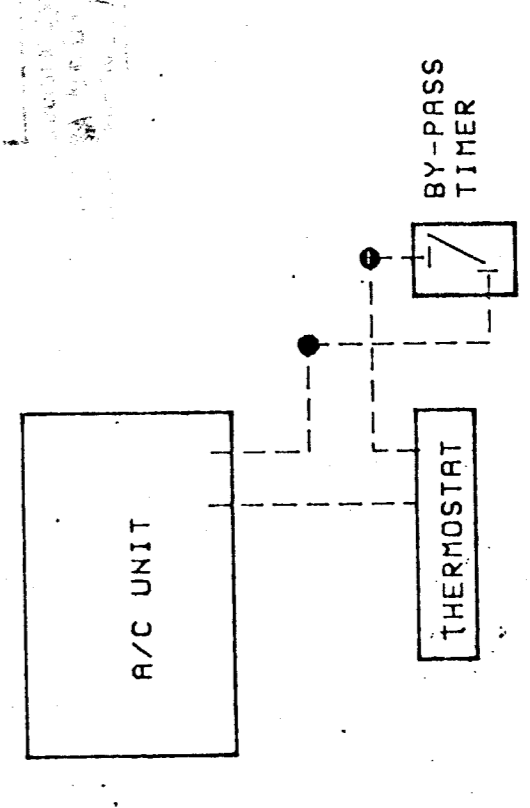


ELECTRICAL POWER PLAN
(OPPOSITE HAND SHOWN)



SYSTEM GROUND DETAIL
BY DISTRICT

1. SIZE OF CONDUCTORS SHALL COMPLY WITH NEC TABLE 250-95.
2. BOND SEPARATE CONDUCTORS FROM GROUND ROD TO ELECTRICAL PANEL AND TO METAL BUILDING FRAME (NEC 250-81). IN ADDITION TO THE DETAIL ABOVE, BOND THE ELECTRICAL GROUND TO METAL WATER PIPE EMBEDDED AT LEAST 10 FT. INTO THE SOIL IF AVAILABLE (NEC 250-81 & 250-83).
3. ALL MODULES OF METAL FRAME BUILDINGS SHALL BE ELECTRICALLY BONDED TOGETHER (BOLTING ONLY IS NOT ACCEPTABLE BONDING).
4. CHECK RESISTANCE TO GROUND. IF RESISTANCE EXCEEDS OHMS, INSTALL ADDITIONAL GROUND RODS WITH CONDUCTORS, AS SHOWN, SEPARATED AT LEAST 6'-0" UNTIL RESISTANCE IS 25 OHMS OR LESS (NEC 250-84).



56074 RR 2331