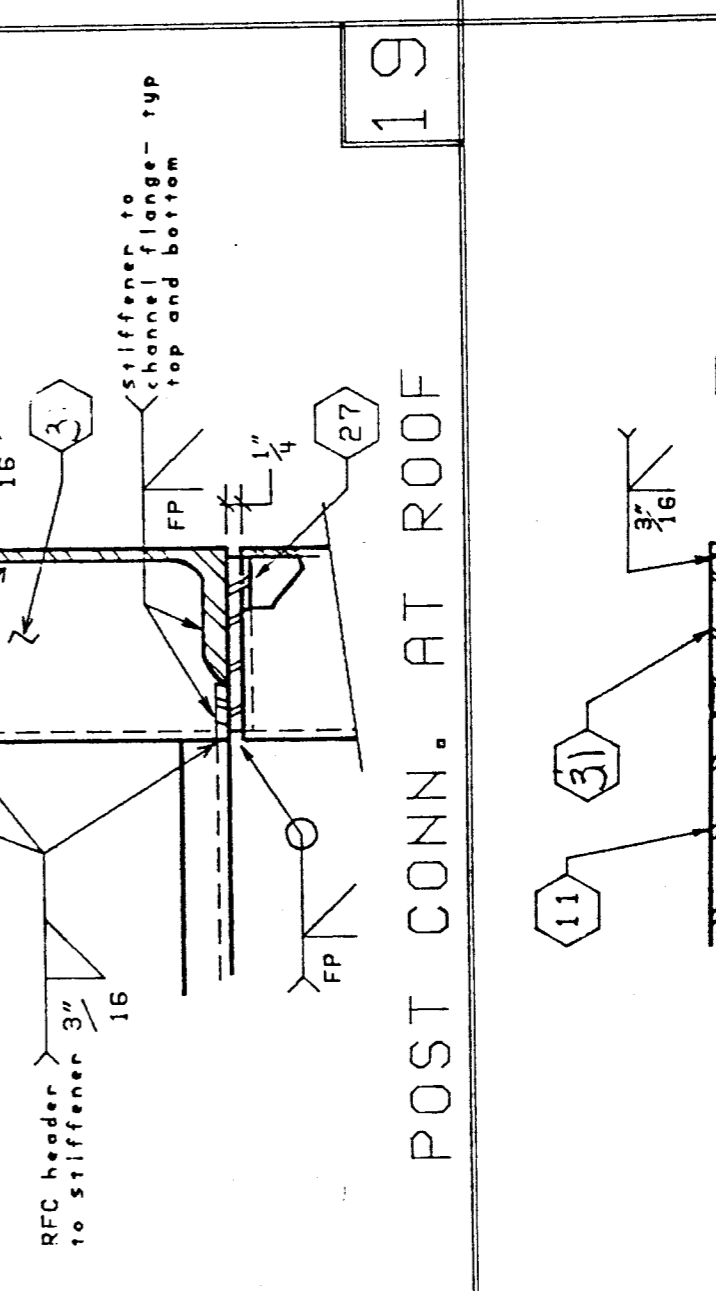
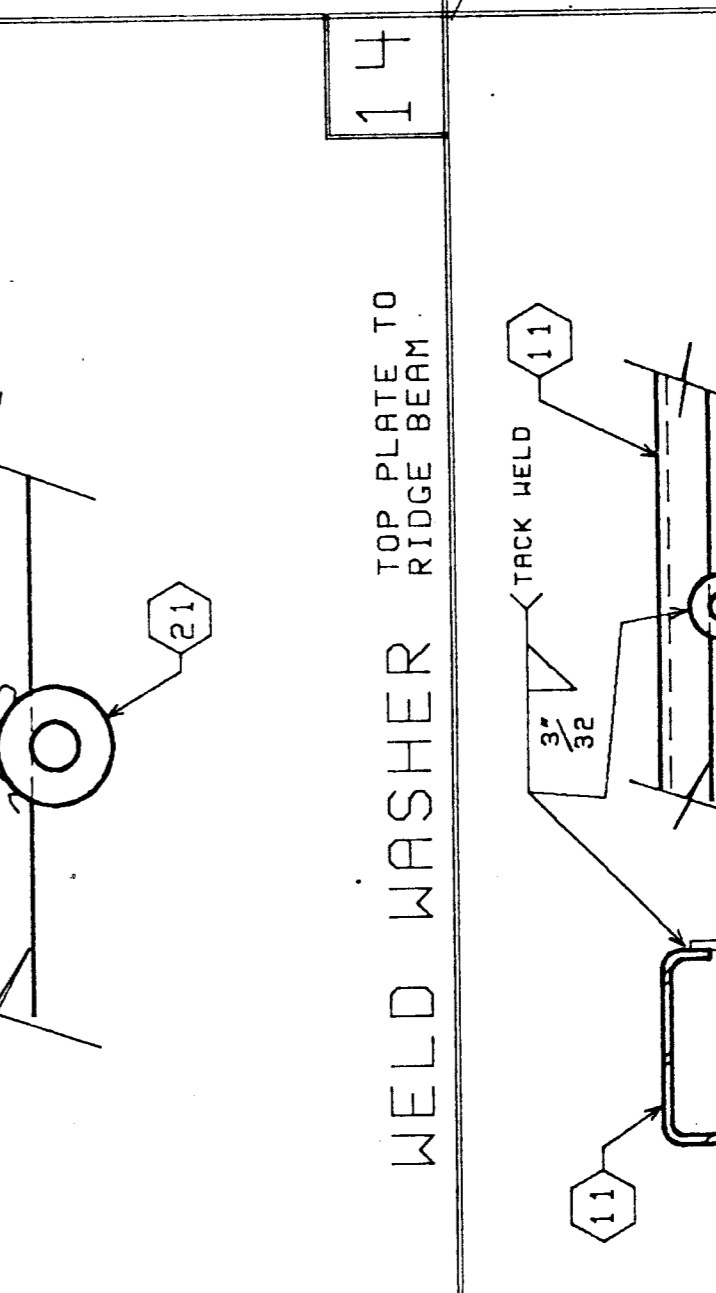
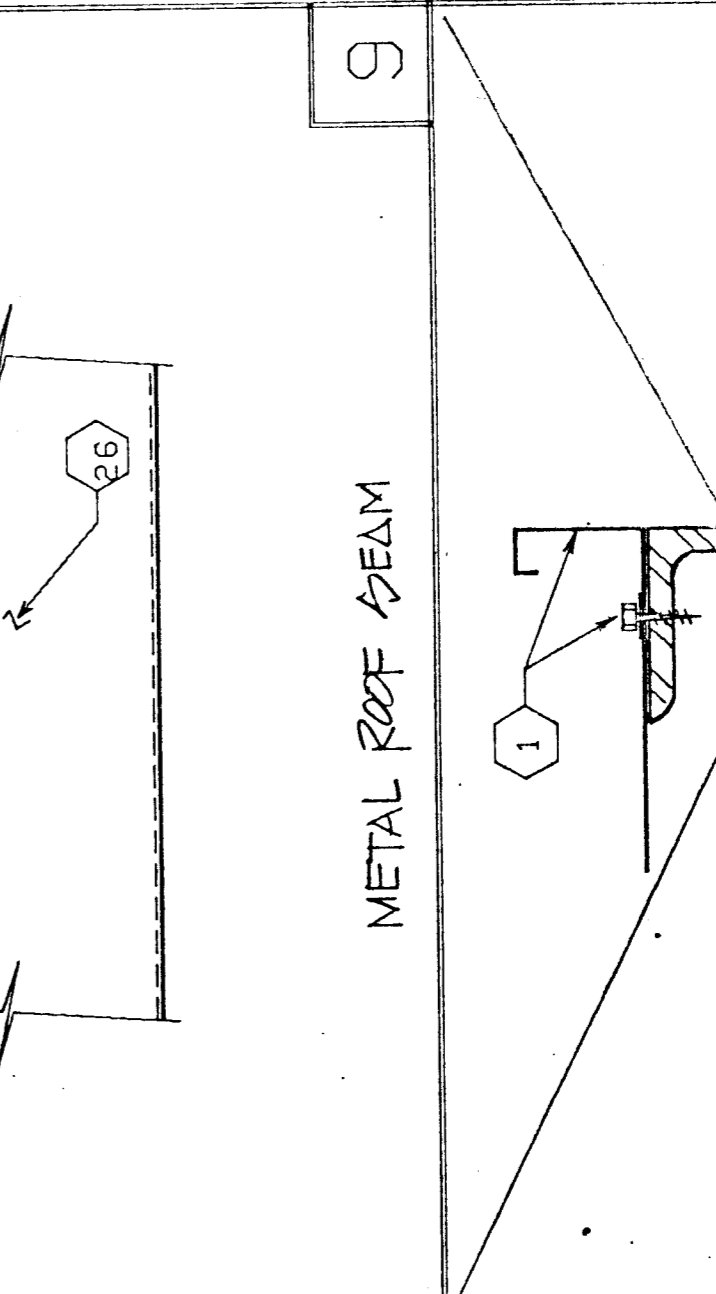
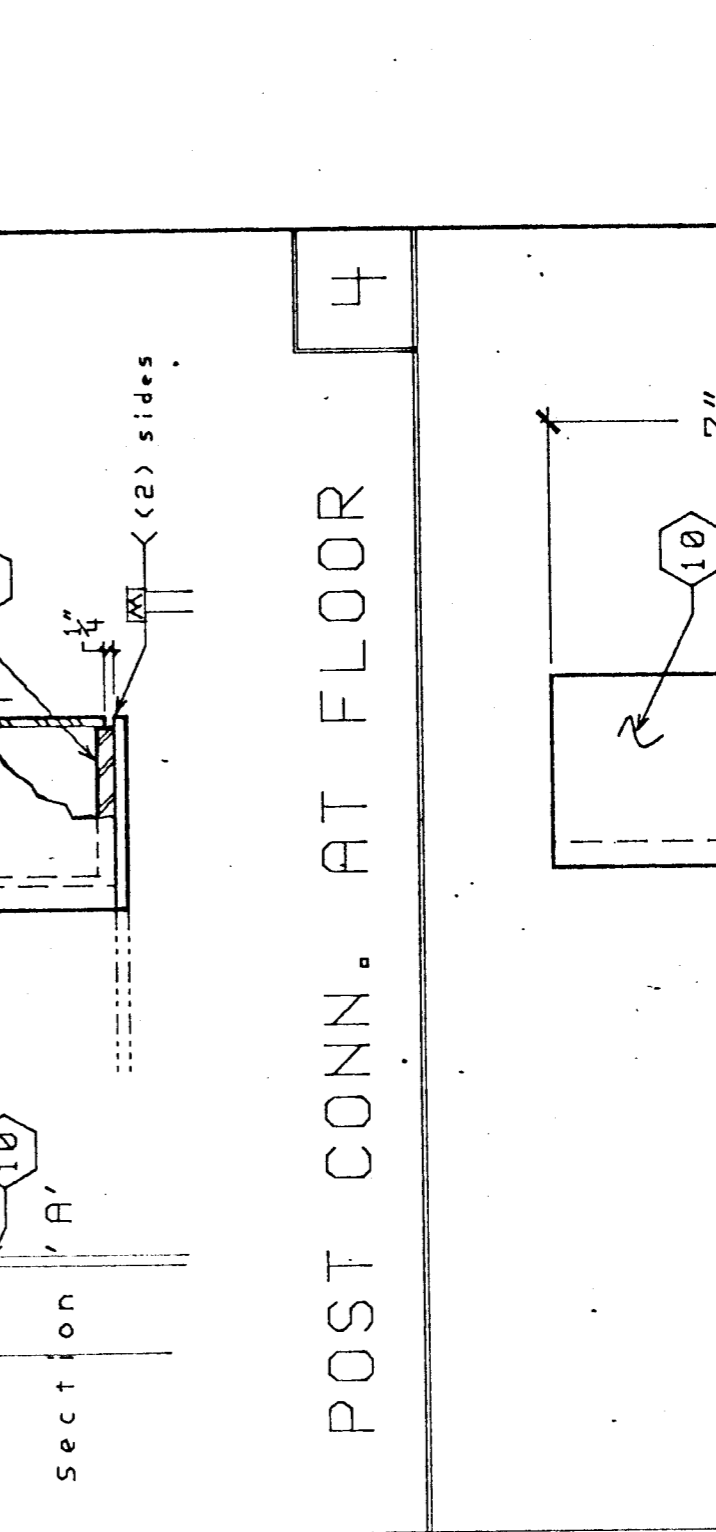
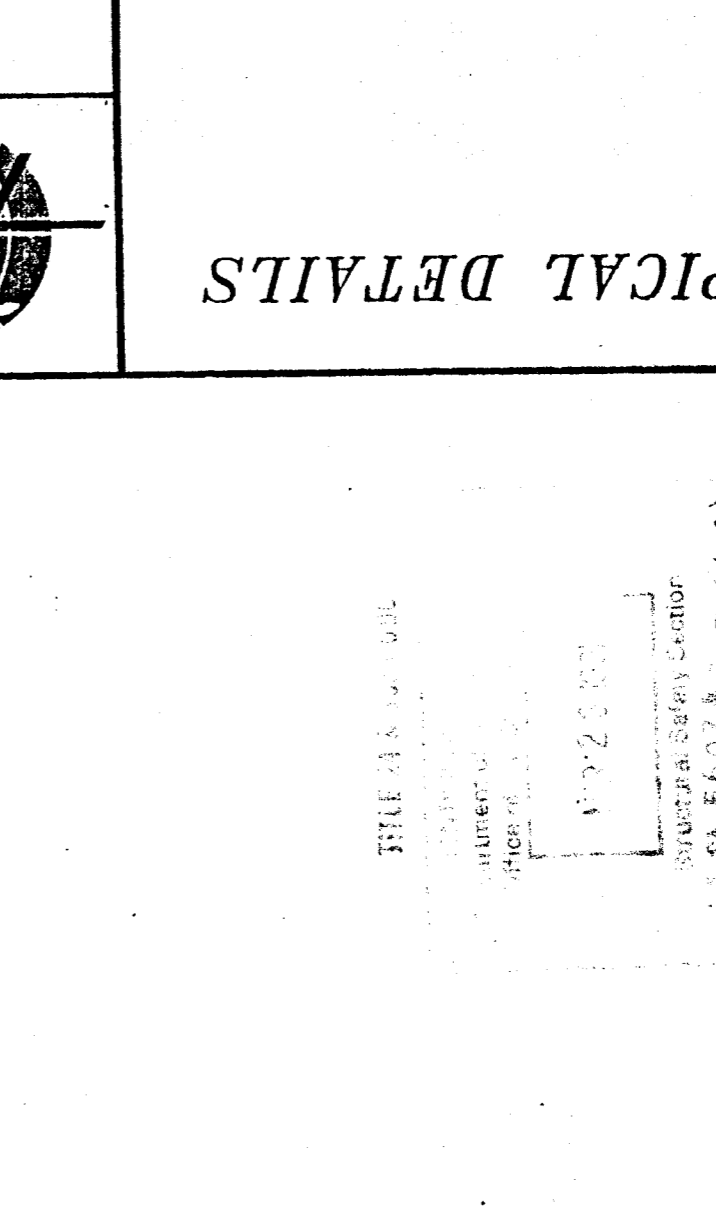
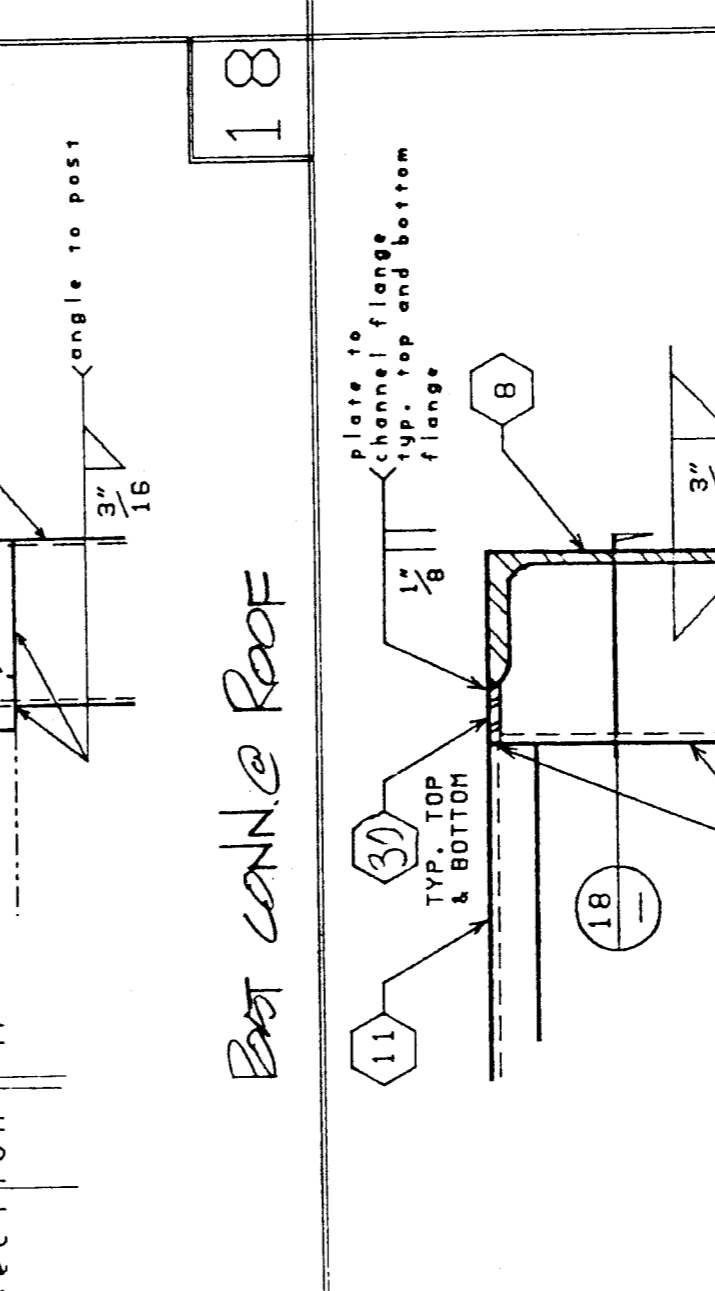
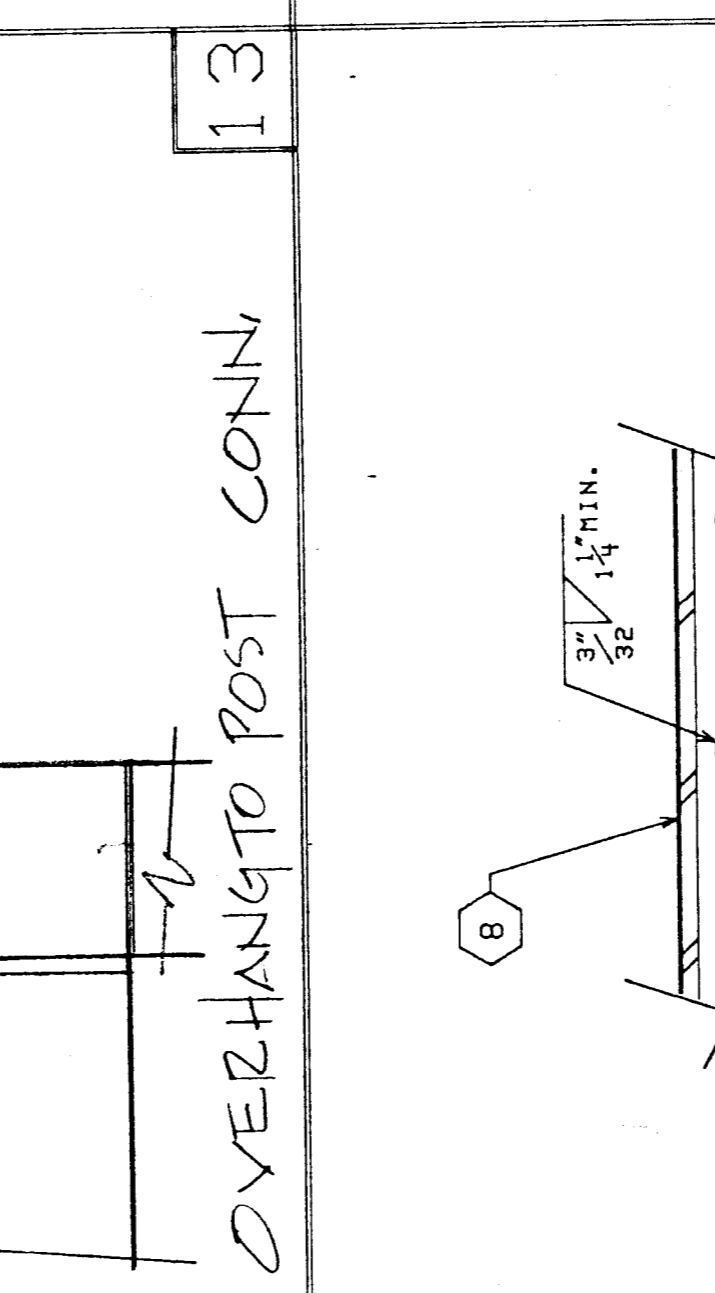
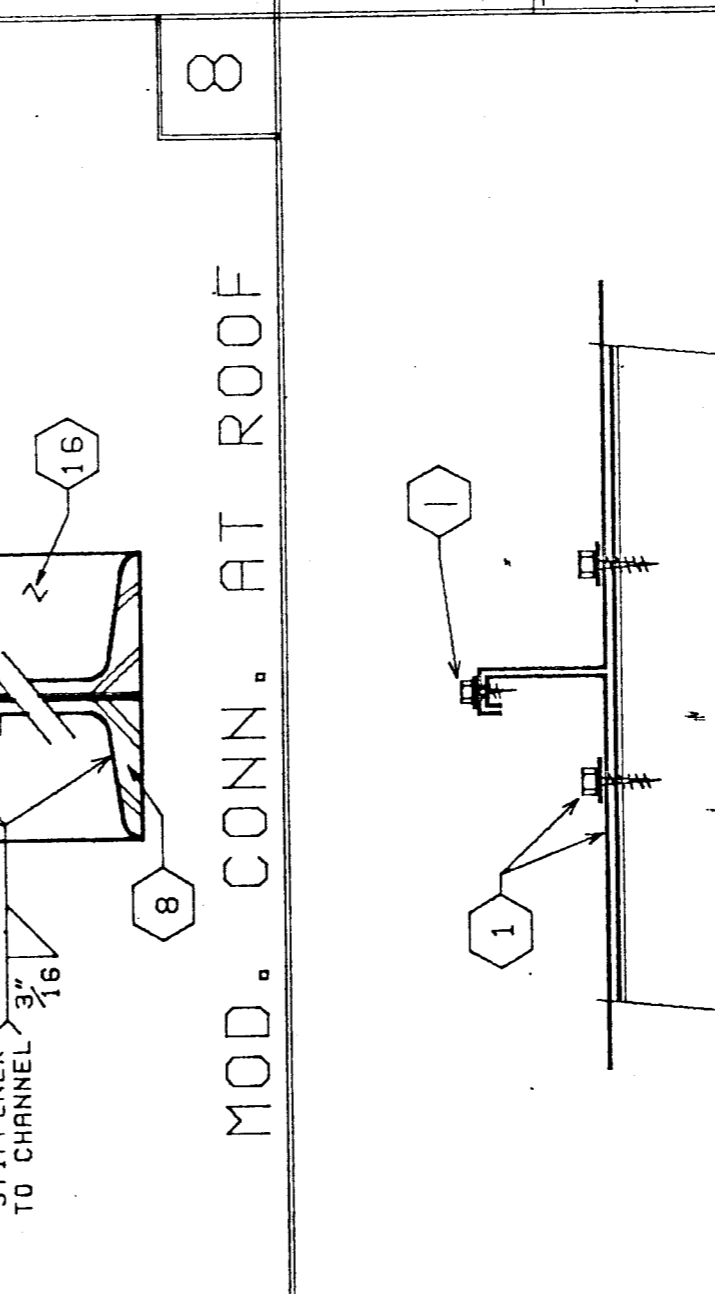
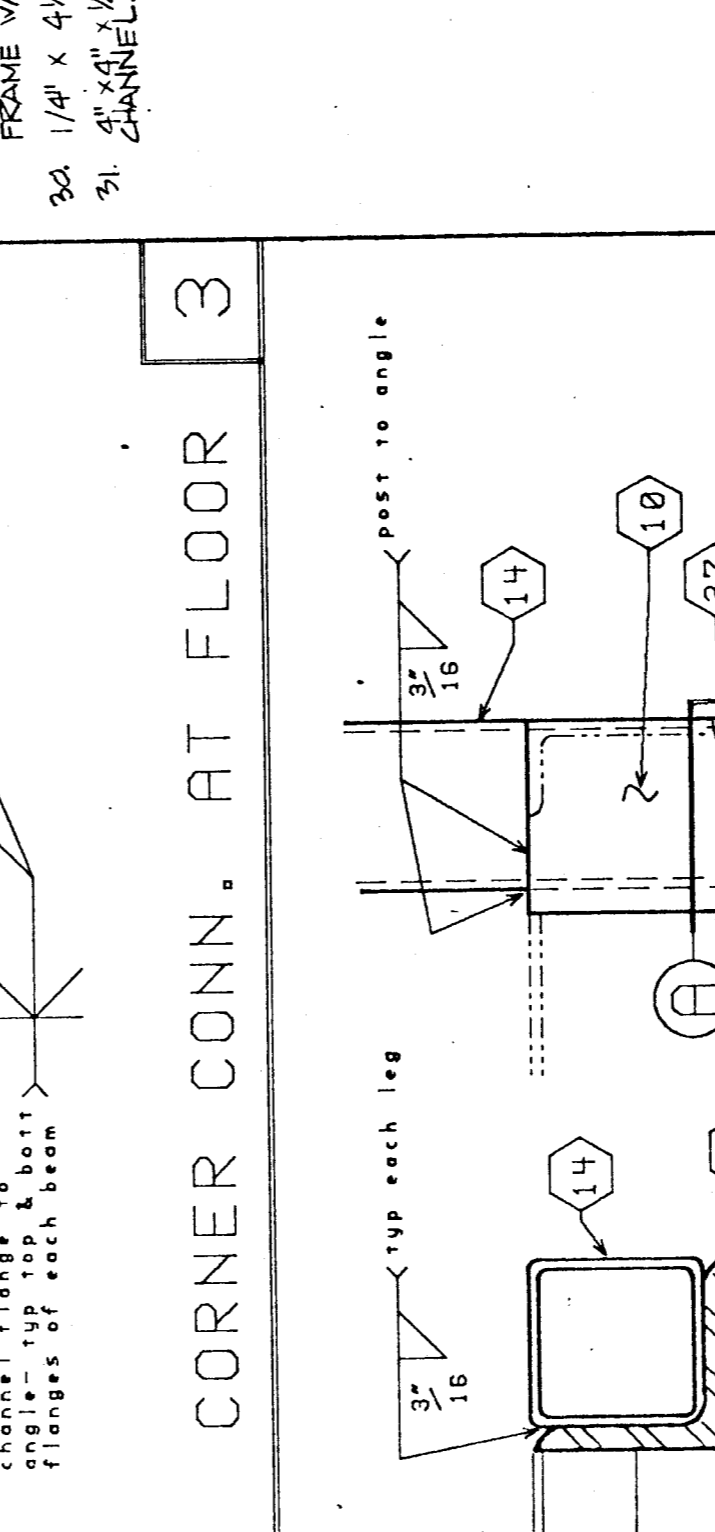
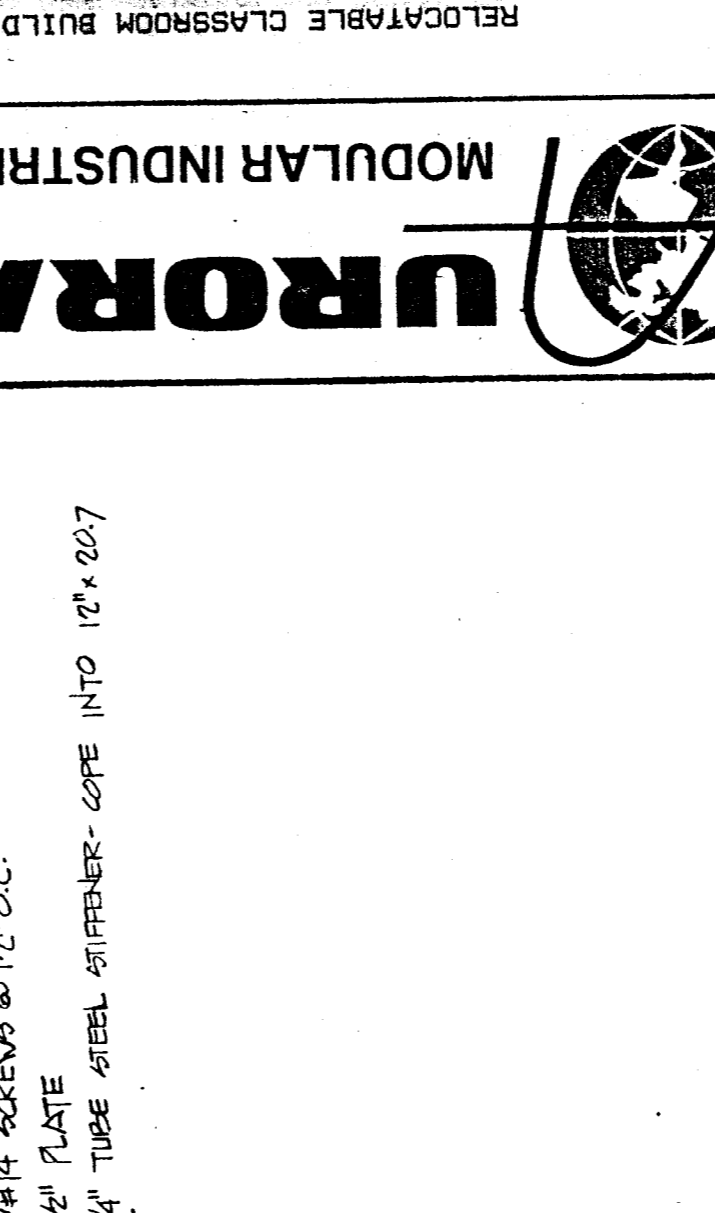
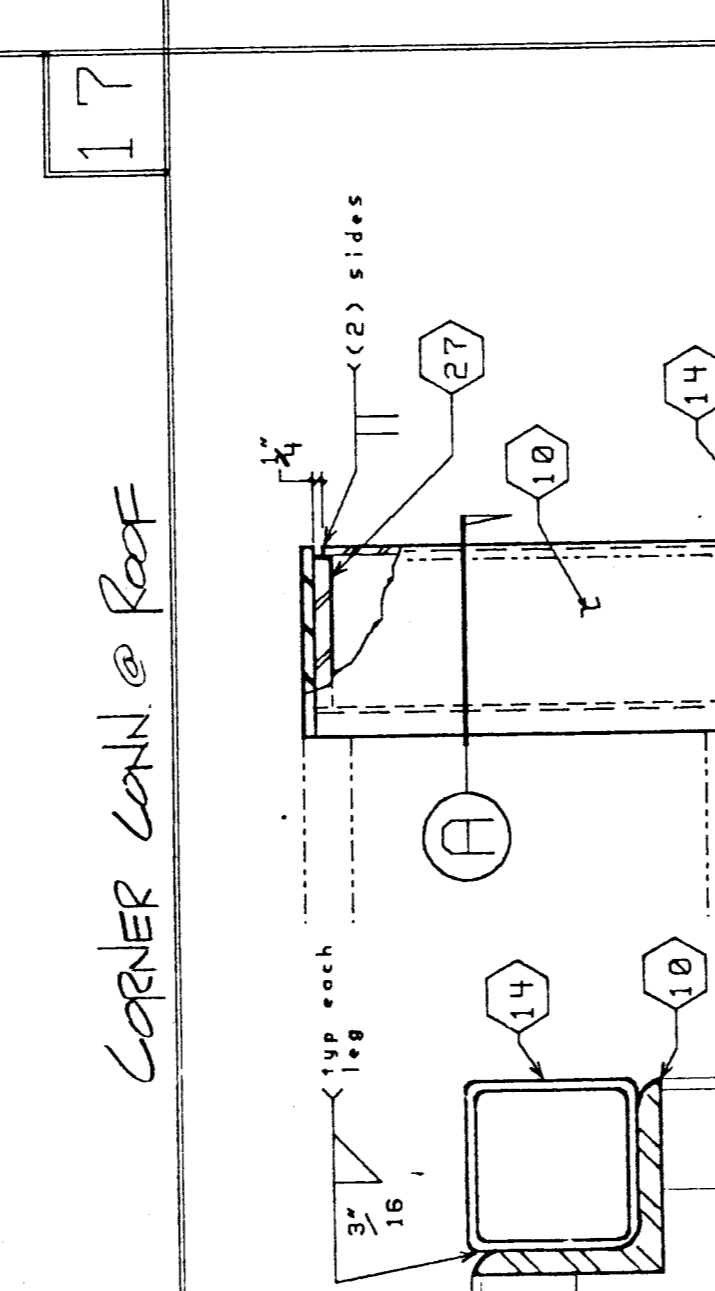
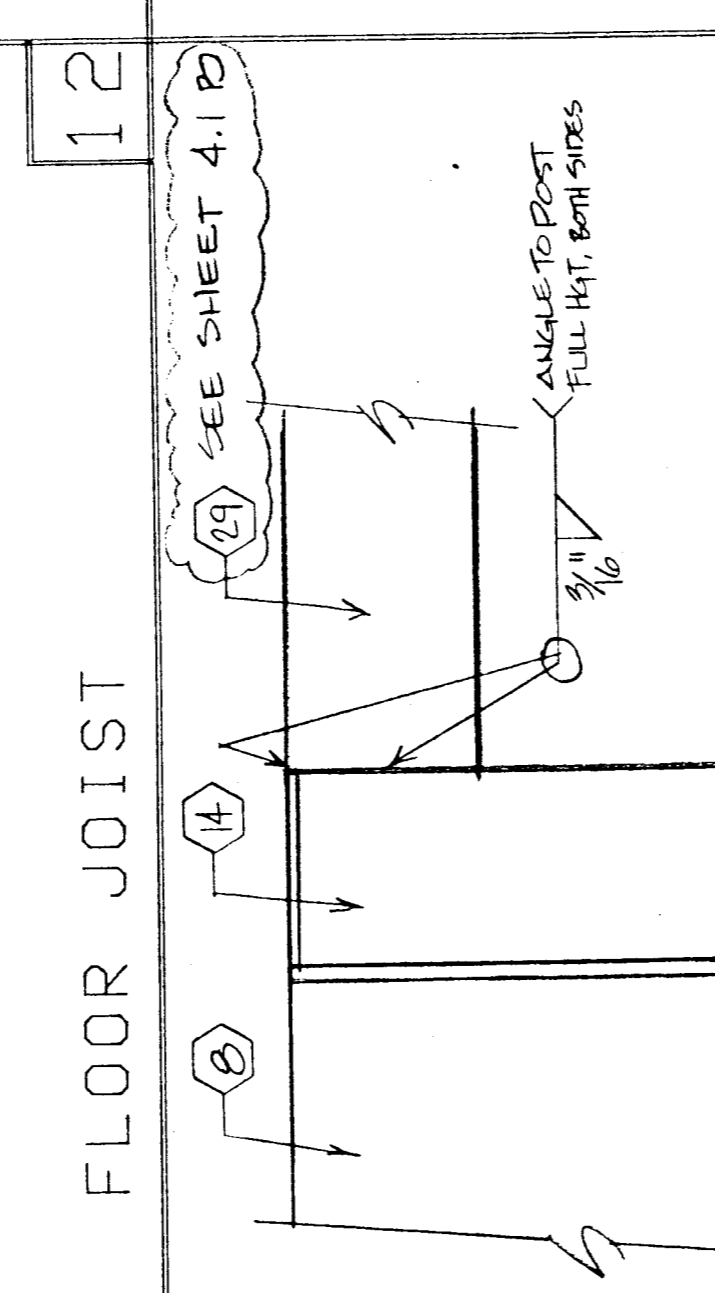
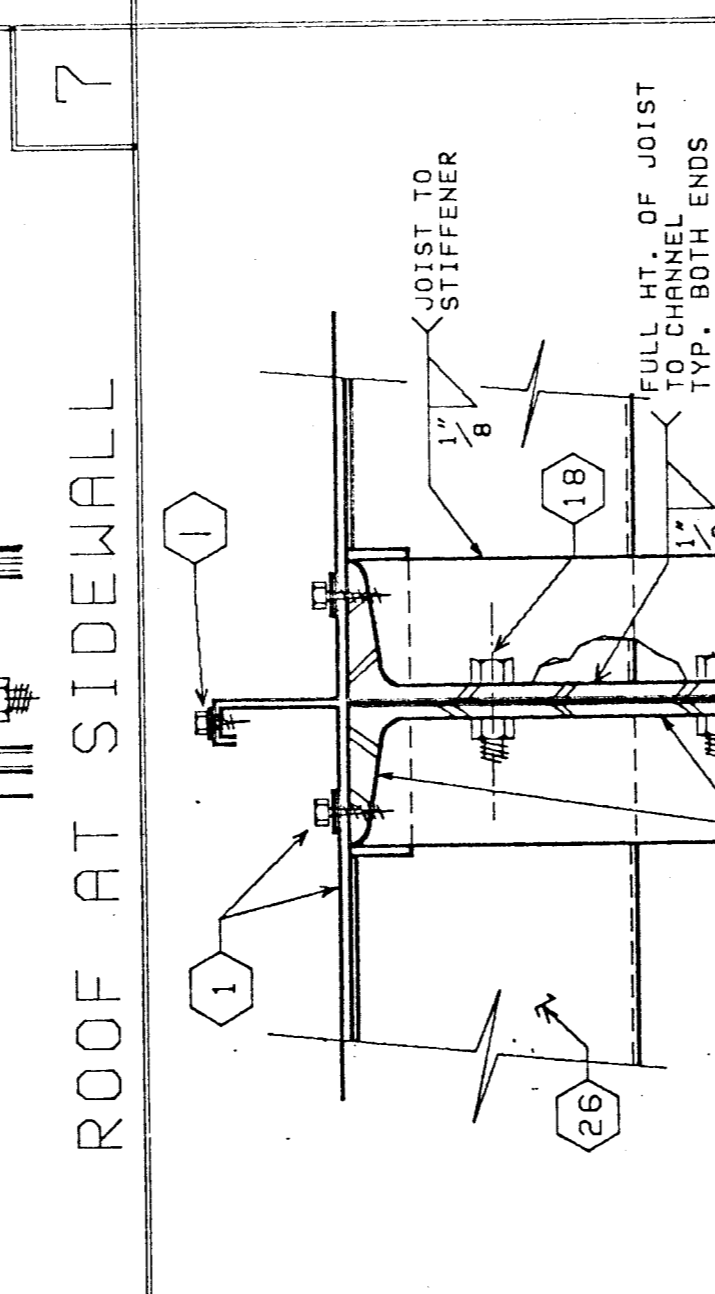
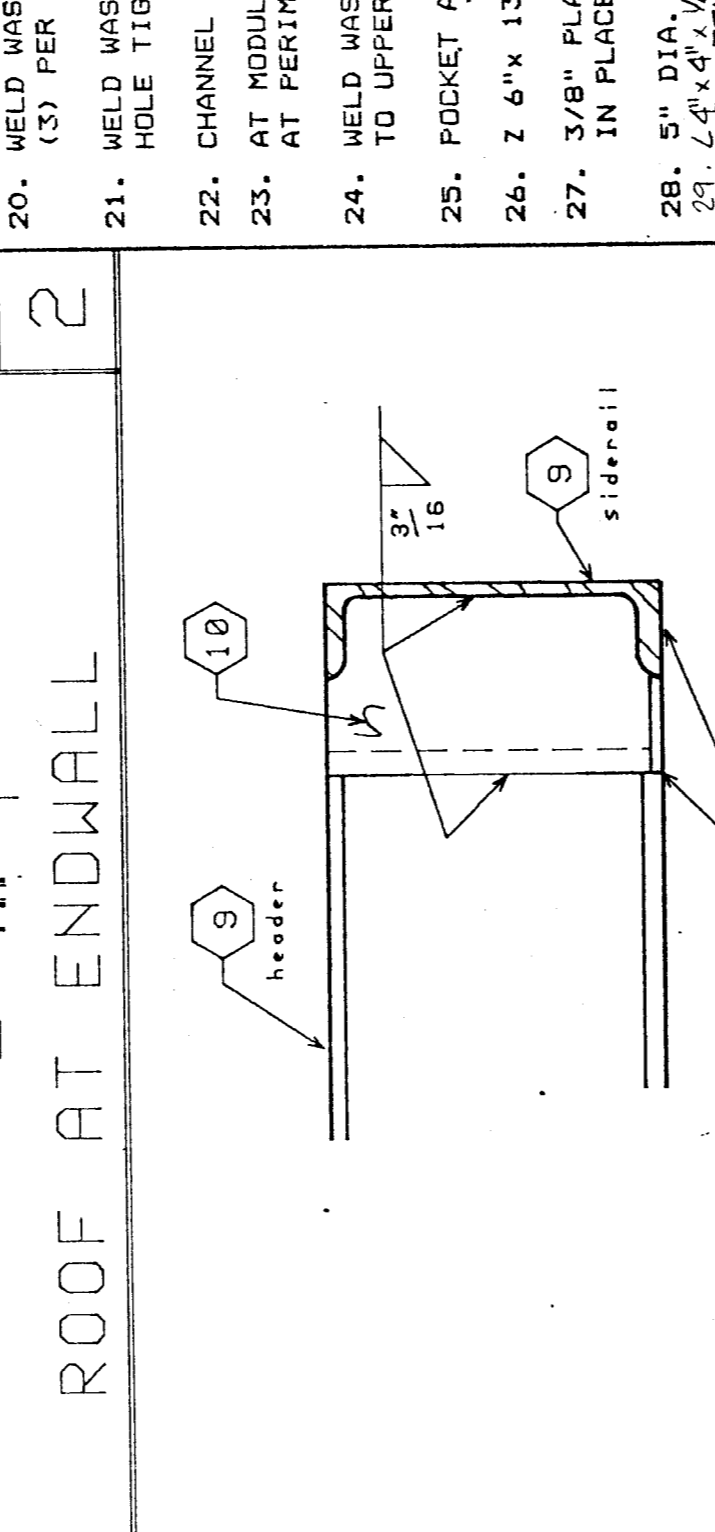
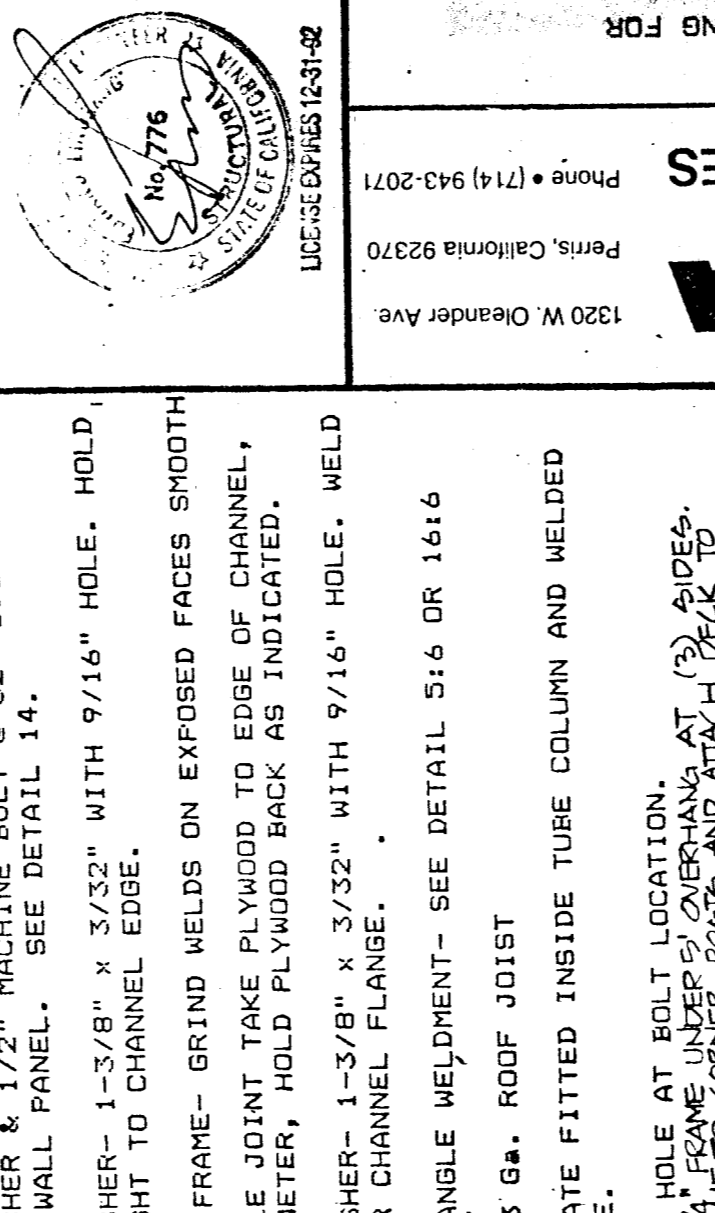
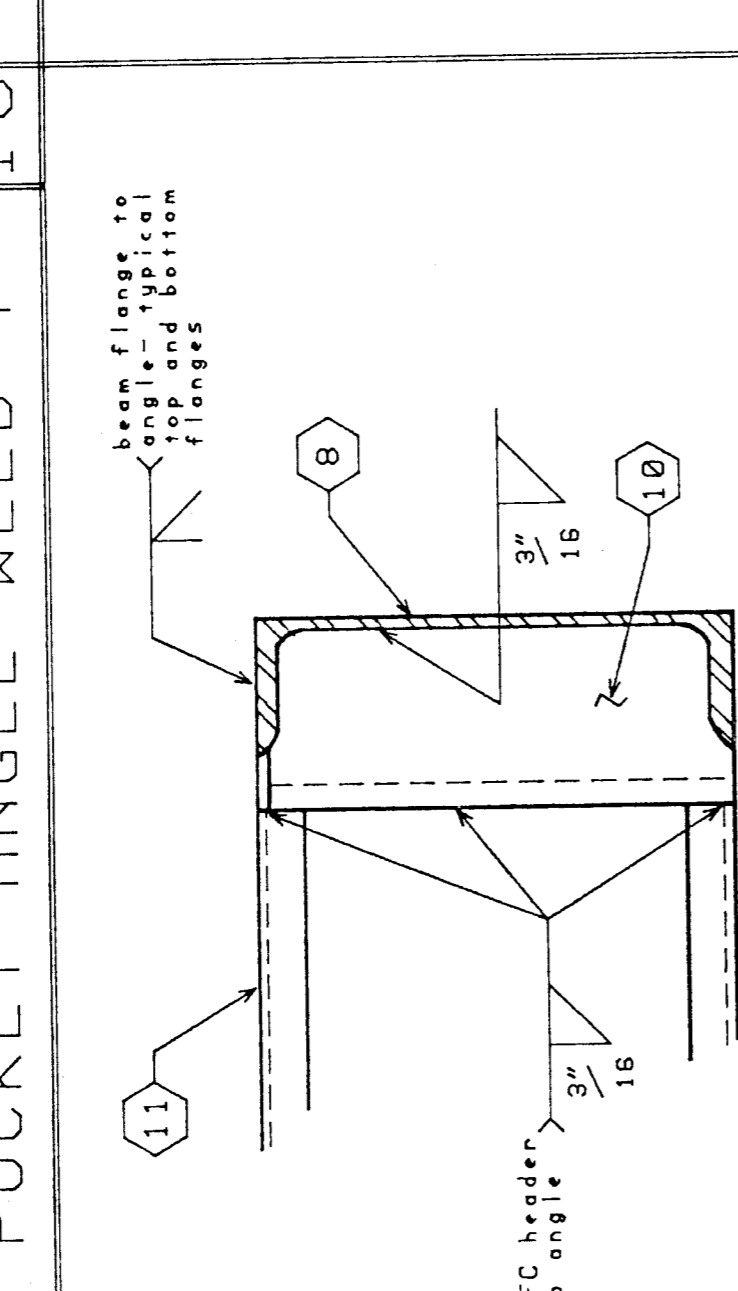
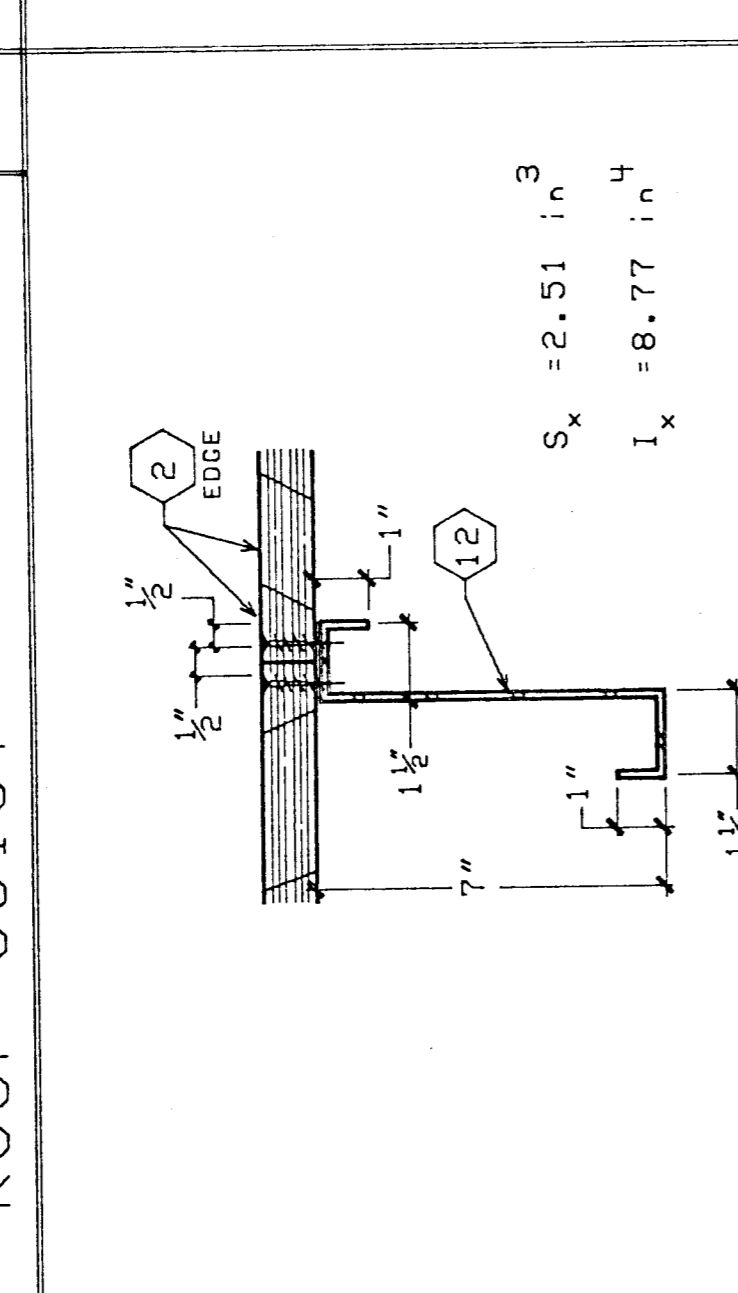
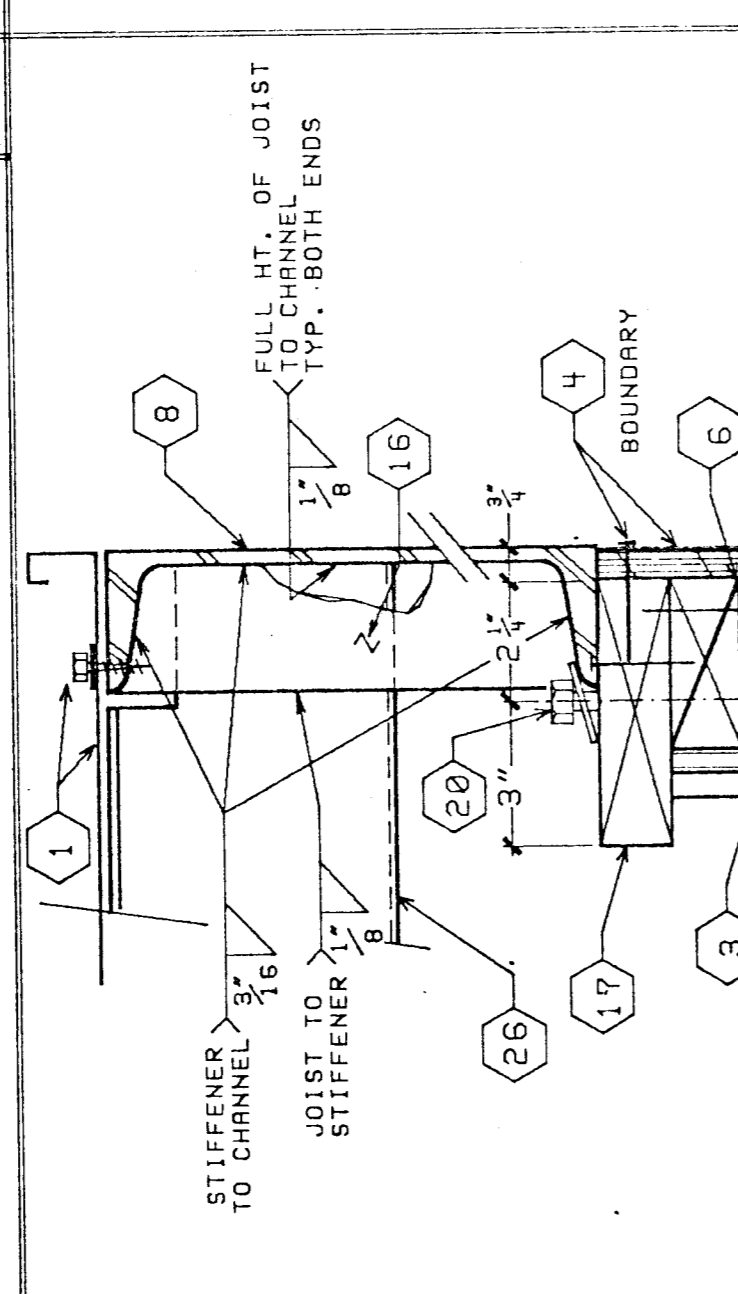
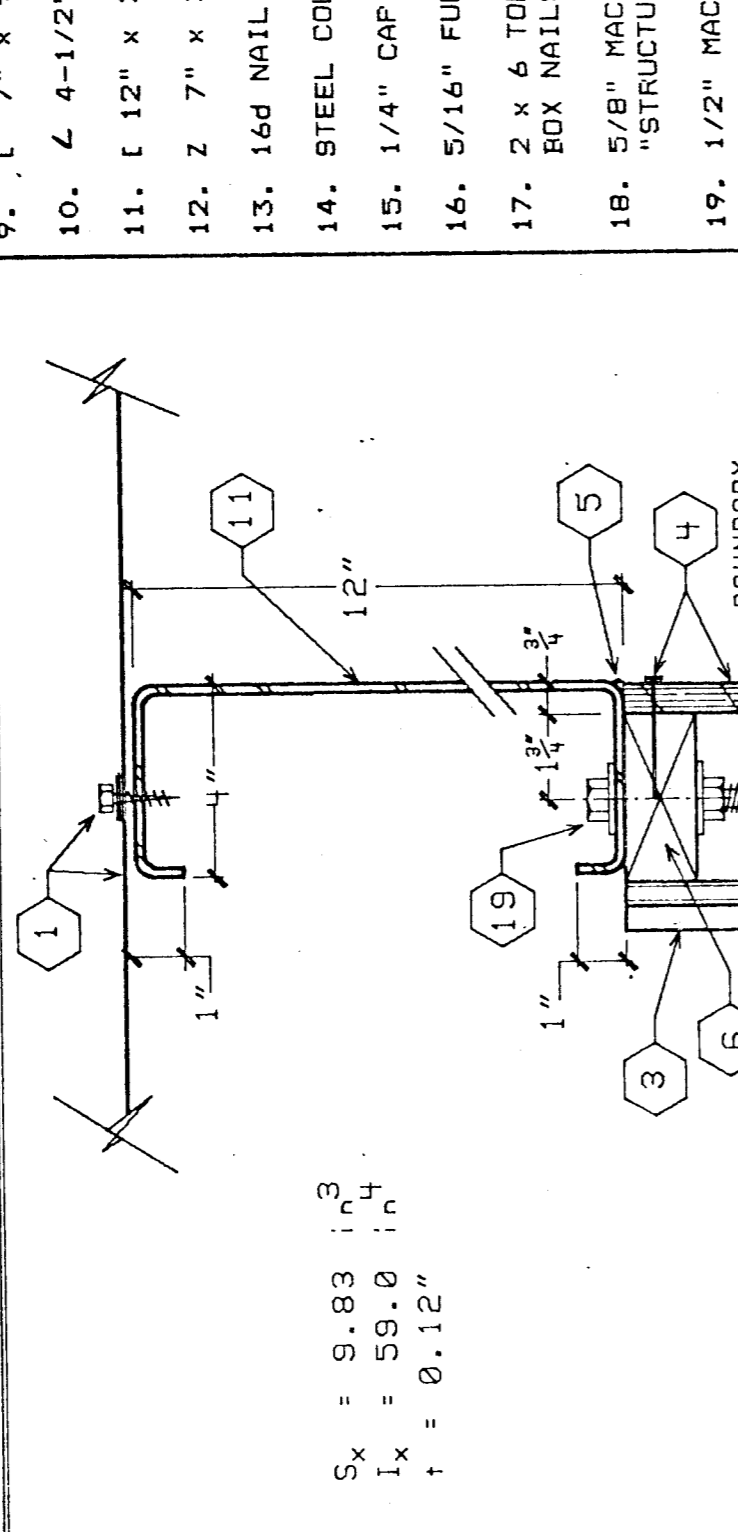
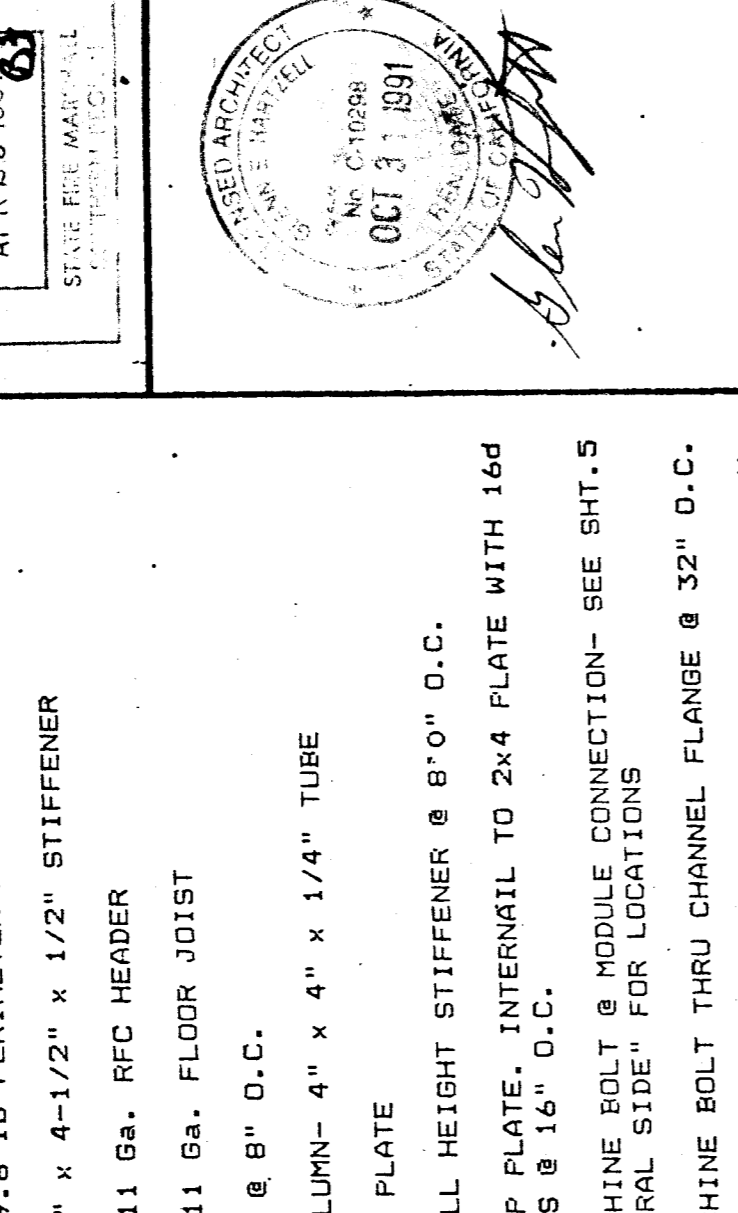


1. STEEL ROOF DECK- 22 GA. ROLL FORMED 3" STANDING SEAM ROOF DECK. USE #14 SELF TAP SCREWS @ 6" O.C. AT ROOF JOIST. (2) HEADERS (3) PER PANEL) AND #10 @ 6" O.C. OUTSIDE EDGE. RIDGE BEAM AND BETWEEN PANELS AT STANDING RIB. ALL SCREWS SHALL HAVE NEOPRENE WASHER.
2. PLYWOOD FLOOR SHEATHING- SEE NOTE 24.5. ATTACH PLYWOOD TO CHANNEL "SELF TAP SCREWS @ 6" O.C. BOUNDARY & EDGES AND 12 O.C. FIELD.
3. TYPICAL INTERIOR FINISH- SEE NOTE 11-4
4. TYPICAL EXTERIOR FINISH- SEE NOTE 11-4
5. SEALANT
6. 2 x 4 TOP PLATE OR BOTTOM PLATE
7. Z 7" x 13 GA. STEEL BRACE WELDED TO PERIMETER FRAME AND FLOOR JOIST.
8. C 12" x 11 GA. PERIMETER BEAM
9. C 7" x 9.8 lb PERIMETER FRAME
10. Z 4-1/2" x 4-1/2" x 1/2" STIFFENER
11. C 12" x 11 GA. RFC HEADER
12. Z 7" x 11 GA. FLOOR JOIST
13. 1/4" CAP PLATE
14. STEEL COLUMN- 4" x 4" x 1/4" TUBE
15. 1/4" CAP PLATE
16. 5/16" FULL HEIGHT STIFFENER @ 8" O.C.
17. 2 x 4 TOP PLATE. INTERNAL TO 2x4 PLATE WITH 16d BOX NAILS @ 16" O.C.
18. 5/8" MACHINE BOLT @ MODULE CONNECTION- SEE SHT. 5 "STRUCTURAL SIDE" FOR LOCATIONS
19. 1/2" MACHINE BOLT THRU CHANNEL FLANGE @ 32" O.C.
20. WELD WASHER & 1/2" MACHINE BOLT @ 32" O.C. MIN. (3) PER WALL PANEL. SEE DETAIL 14.
21. WELD WASHER- 1-3/8" x 3/32" WITH 9/16" HOLE. HOLD. HOLE TIGHT TO CHANNEL EDGE.
22. CHANNEL FRAME- GRIND WELDS ON EXPOSED FACES SMOOTH
23. AT MODULE JOINT TAKE PLYWOOD TO EDGE OF CHANNEL. AT PERIMETER, HOLD PLYWOOD BACK AS INDICATED.
24. WELD WASHER- 1-3/8" x 3/32" WITH 9/16" HOLE. WELD TO UPPER CHANNEL FLANGE.
25. POCKET ANGLE WELDMENT- SEE DETAIL 516 OR 1616
26. Z 6" x 13 GA. ROOF JOIST
27. 3/8" PLATE FITTED INSIDE TUBE COLUMN AND WELDED IN PLACE.
28. 5" DIA. HOLE AT BOLT LOCATION.
29. 1/4" x 4 1/2" PLATE UNDER OVERHANG AT SIDES. HOLD WITH WASHERS @ 12" O.C.
30. 1/4" x 4 1/2" PLATE UNDER OVERHANG AT ENDS. HOLD WITH WASHERS @ 12" O.C.
31. CHANNEL TUBE STEEL STIFFENER- COPE INTO 12" x 20"



1. STEEL ROOF DECK- 22 GA. ROLL FORMED 3" STANDING SEAM ROOF DECK. USE #14 SELF TAP SCREWS @ 6" O.C. AT ROOF JOIST. (2) HEADERS (3) PER PANEL) AND #10 @ 6" O.C. OUTSIDE EDGE. RIDGE BEAM AND BETWEEN PANELS AT STANDING RIB. ALL SCREWS SHALL HAVE NEOPRENE WASHER.

2. PLYWOOD FLOOR SHEATHING- SEE NOTE 24.5. ATTACH PLYWOOD TO CHANNEL "SELF TAP SCREWS @ 6" O.C. BOUNDARY & EDGES AND 12 O.C. FIELD.

3. TYPICAL INTERIOR FINISH- SEE NOTE 11-4

4. TYPICAL EXTERIOR FINISH- SEE NOTE 11-4

5. SEALANT

6. 2 x 4 TOP PLATE OR BOTTOM PLATE

7. Z 7" x 13 GA. STEEL BRACE WELDED TO PERIMETER FRAME AND FLOOR JOIST.

8. C 12" x 11 GA. PERIMETER BEAM

9. C 7" x 9.8 lb PERIMETER FRAME

10. Z 4-1/2" x 4-1/2" x 1/2" STIFFENER

11. C 12" x 11 GA. RFC HEADER

12. Z 7" x 11 GA. FLOOR JOIST

13. 1/4" CAP PLATE

14. STEEL COLUMN- 4" x 4" x 1/4" TUBE

15. 1/4" CAP PLATE

16. 5/16" FULL HEIGHT STIFFENER @ 8" O.C.

17. 2 x 4 TOP PLATE. INTERNAL TO 2x4 PLATE WITH 16d BOX NAILS @ 16" O.C.

18. 5/8" MACHINE BOLT @ MODULE CONNECTION- SEE SHT. 5 "STRUCTURAL SIDE" FOR LOCATIONS

19. 1/2" MACHINE BOLT THRU CHANNEL FLANGE @ 32" O.C.

20. WELD WASHER & 1/2" MACHINE BOLT @ 32" O.C. MIN. (3) PER WALL PANEL. SEE DETAIL 14.

21. WELD WASHER- 1-3/8" x 3/32" WITH 9/16" HOLE. HOLD. HOLE TIGHT TO CHANNEL EDGE.

22. CHANNEL FRAME- GRIND WELDS ON EXPOSED FACES SMOOTH

23. AT MODULE JOINT TAKE PLYWOOD TO EDGE OF CHANNEL. AT PERIMETER, HOLD PLYWOOD BACK AS INDICATED.

24. WELD WASHER- 1-3/8" x 3/32" WITH 9/16" HOLE. WELD TO UPPER CHANNEL FLANGE.

25. POCKET ANGLE WELDMENT- SEE DETAIL 516 OR 1616

26. Z 6" x 13 GA. ROOF JOIST

27. 3/8" PLATE FITTED INSIDE TUBE COLUMN AND WELDED IN PLACE.

28. 5" DIA. HOLE AT BOLT LOCATION.

29. 1/4" x 4 1/2" PLATE UNDER OVERHANG AT SIDES. HOLD WITH WASHERS @ 12" O.C.

30. 1/4" x 4 1/2" PLATE UNDER OVERHANG AT ENDS. HOLD WITH WASHERS @ 12" O.C.

31. CHANNEL TUBE STEEL STIFFENER- COPE INTO 12" x 20"

56074 APR 23 91