

RESTROOM
12 x 40



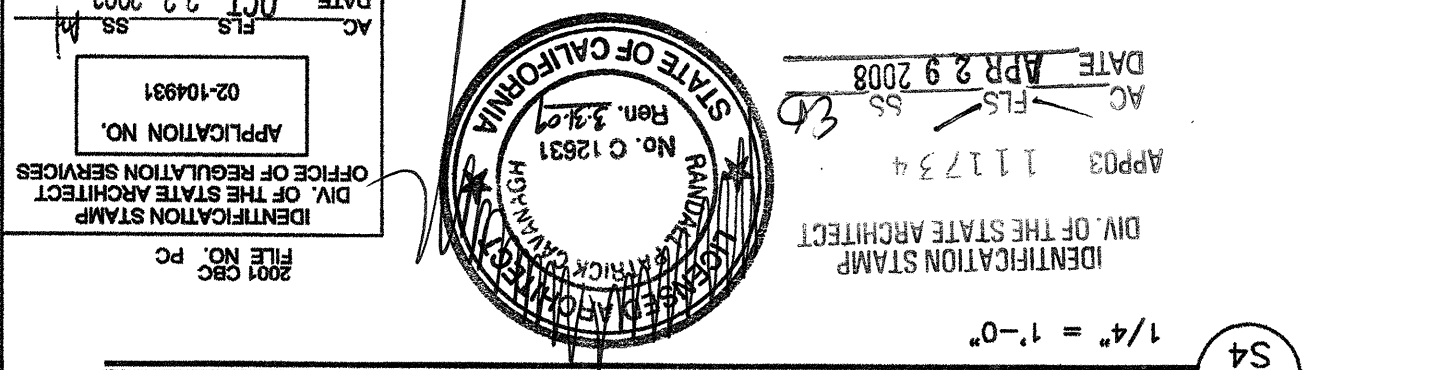
CUSTOMER:
WALL FRAMING ELEVATIONS AND FRAME DETAILS

DATE: 5/30/03
SCALE: AS NOTED
DRAWN BY: REM
DESIGNED BY: MDR
CHECKED BY: KAL
SERIAL NO.

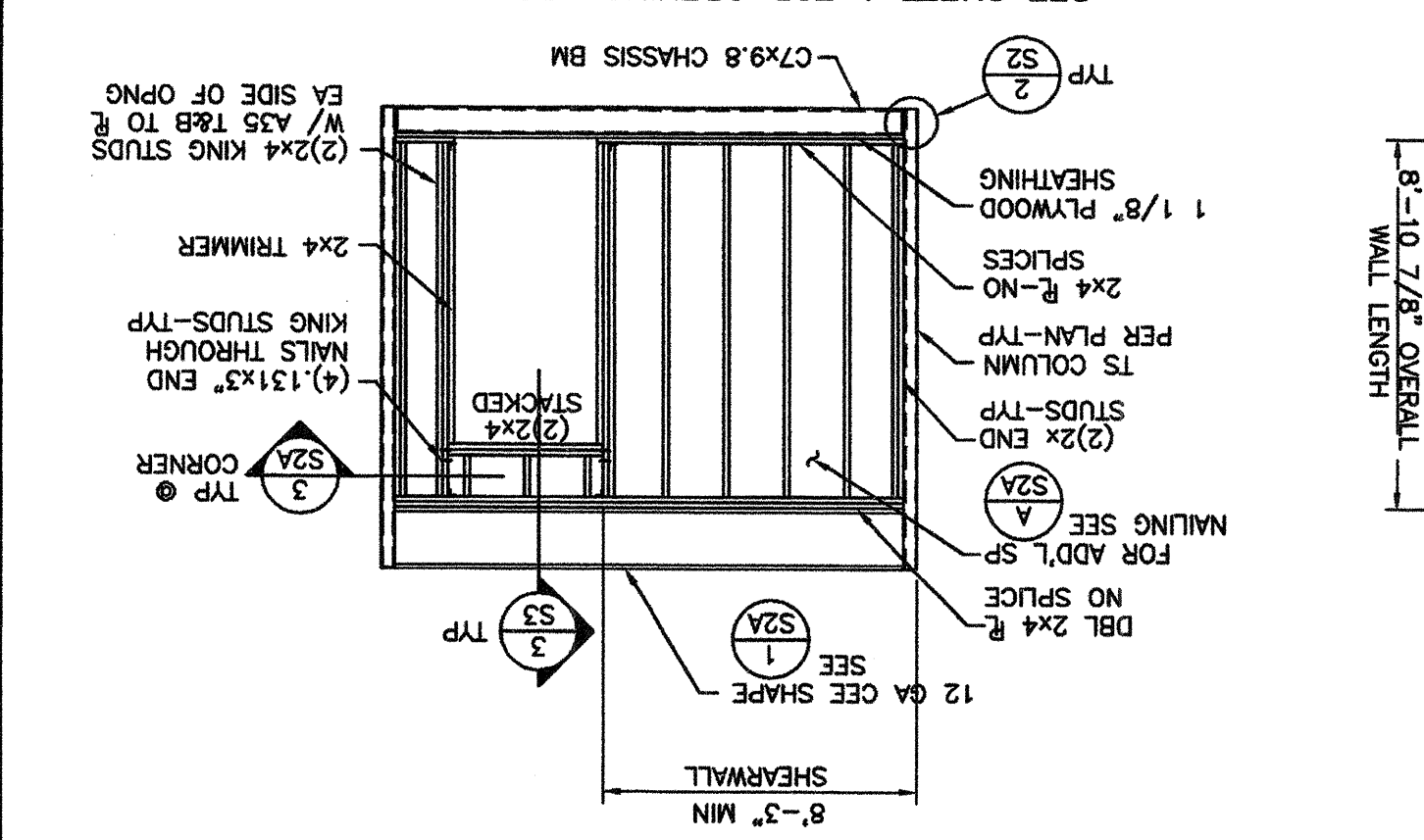
NO	DATE	DESCRIPTION

REVISIONS

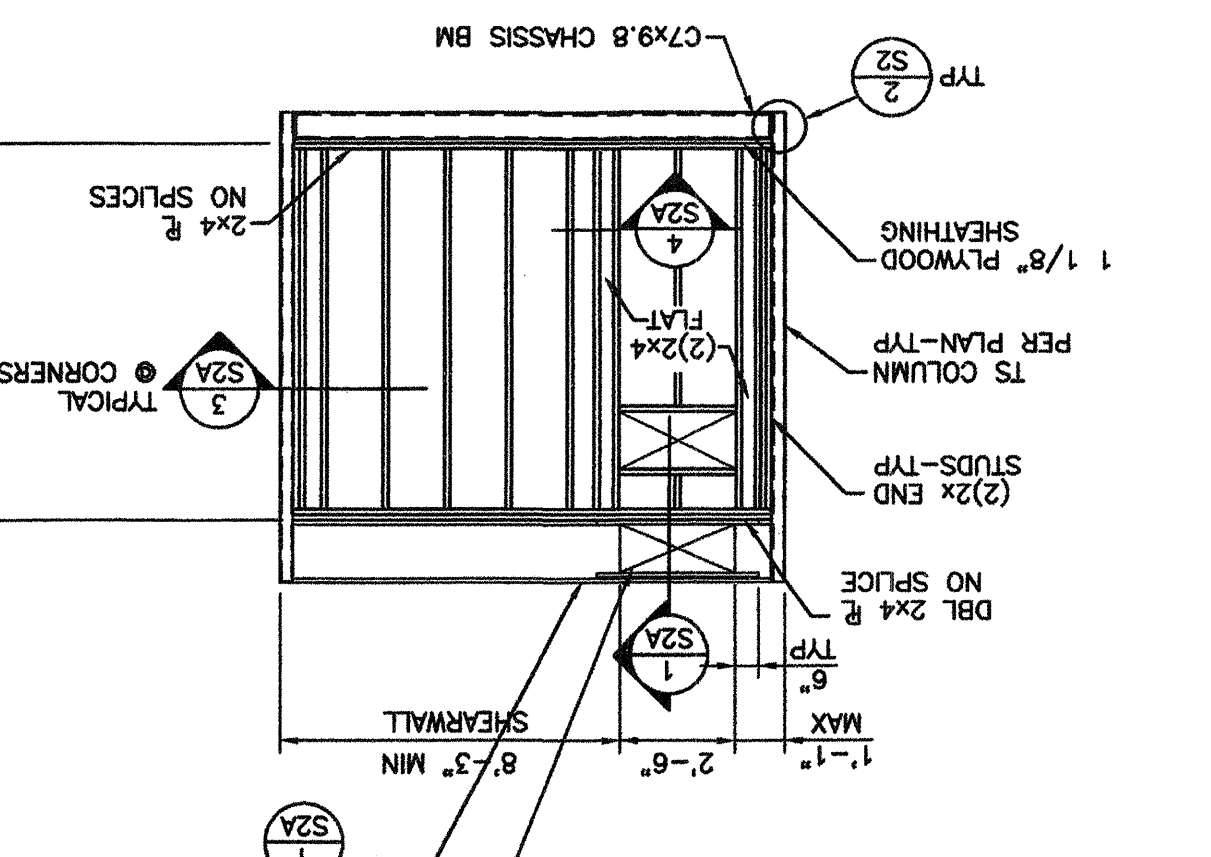
PROJECT NO. 02156-16
SHEET NO. S4



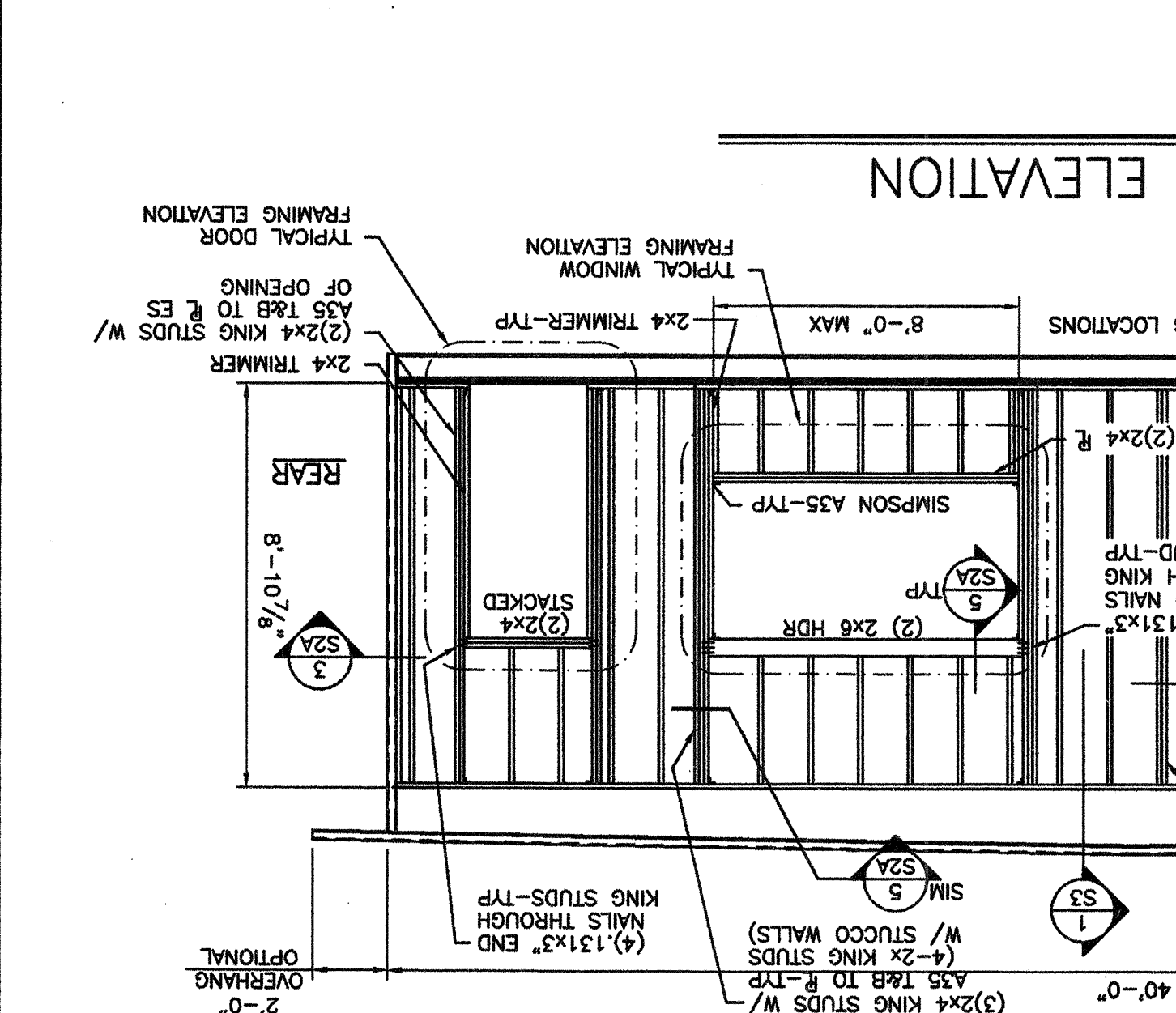
1/4" = 1'-0"



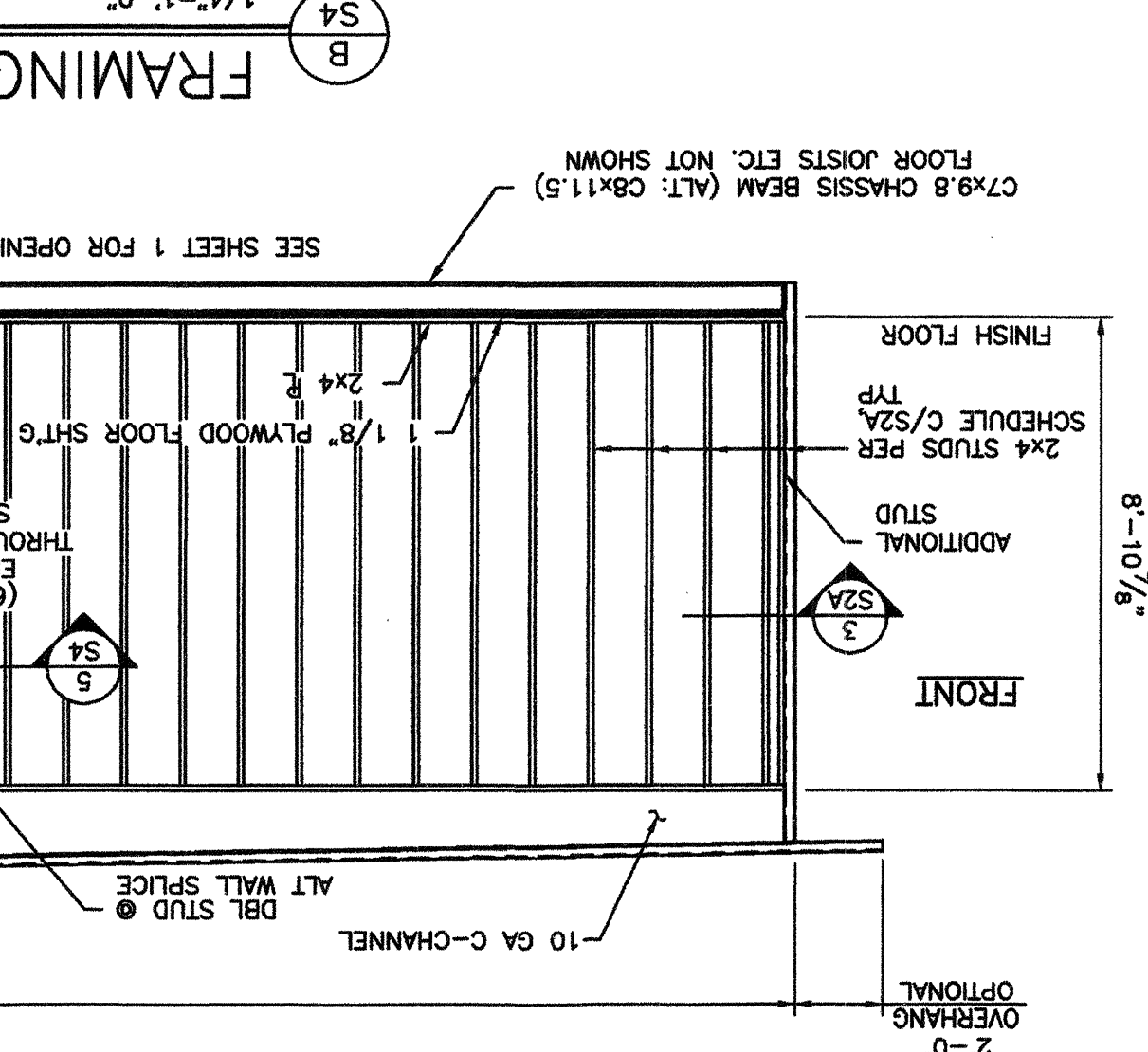
1/4" = 1'-0"



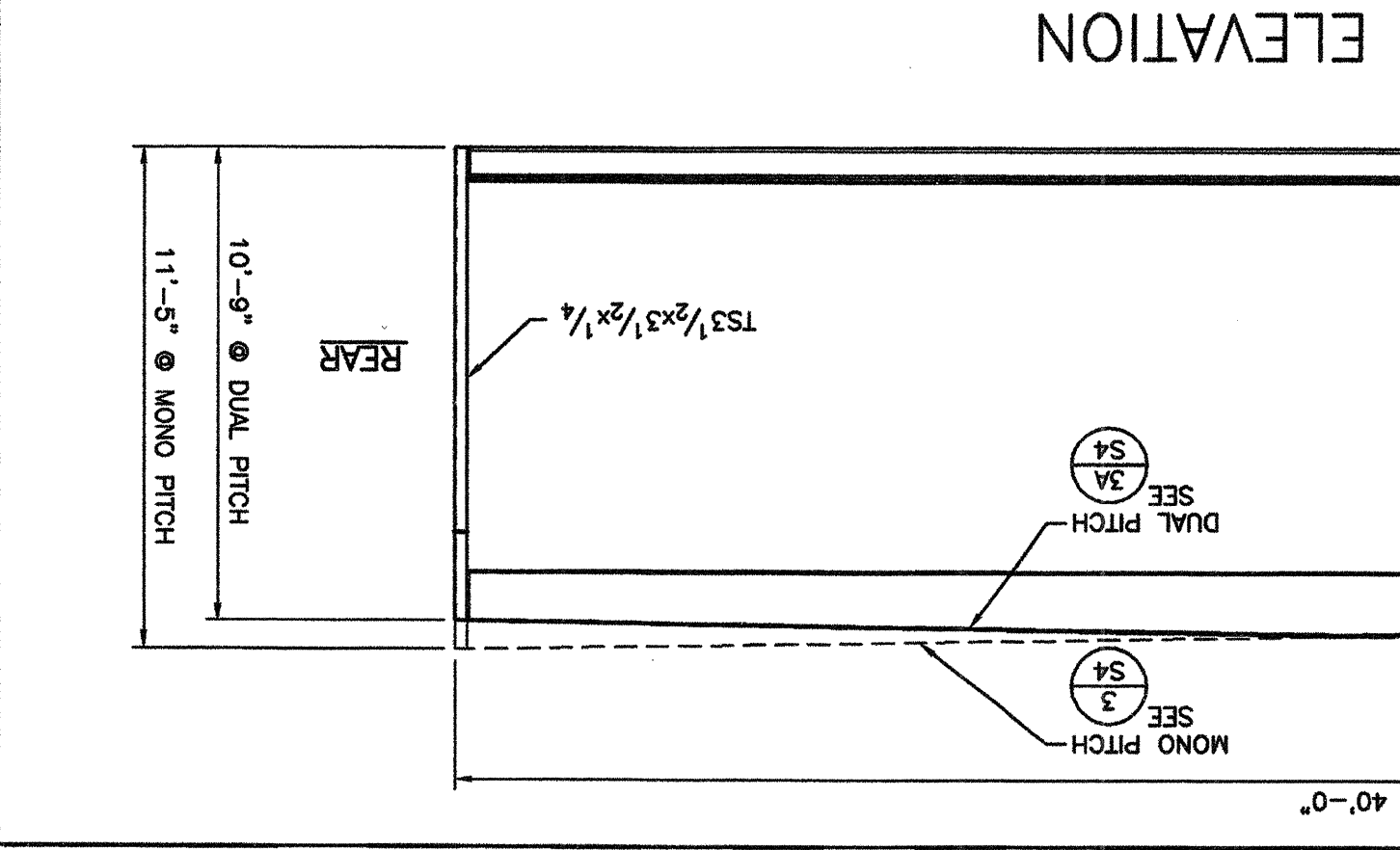
1/4" = 1'-0"



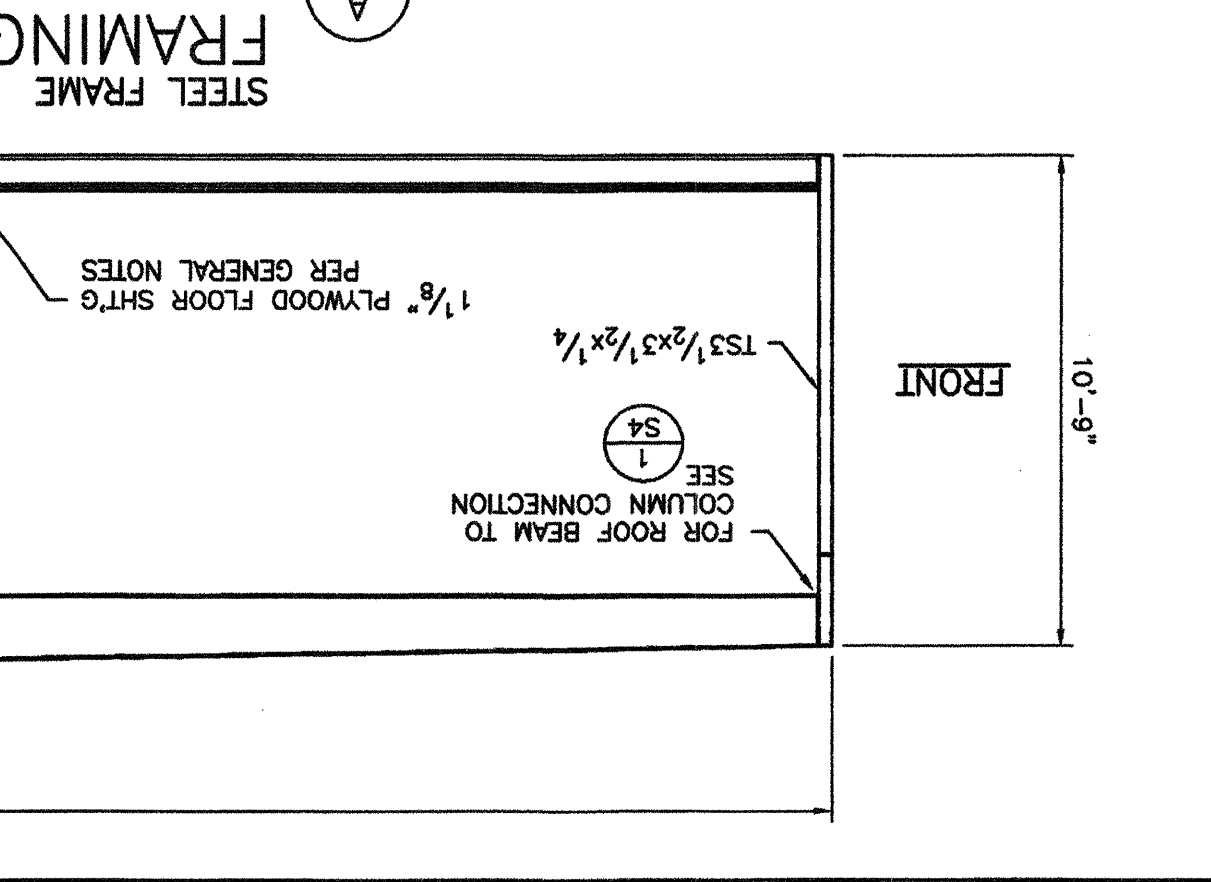
1/4" = 1'-0"



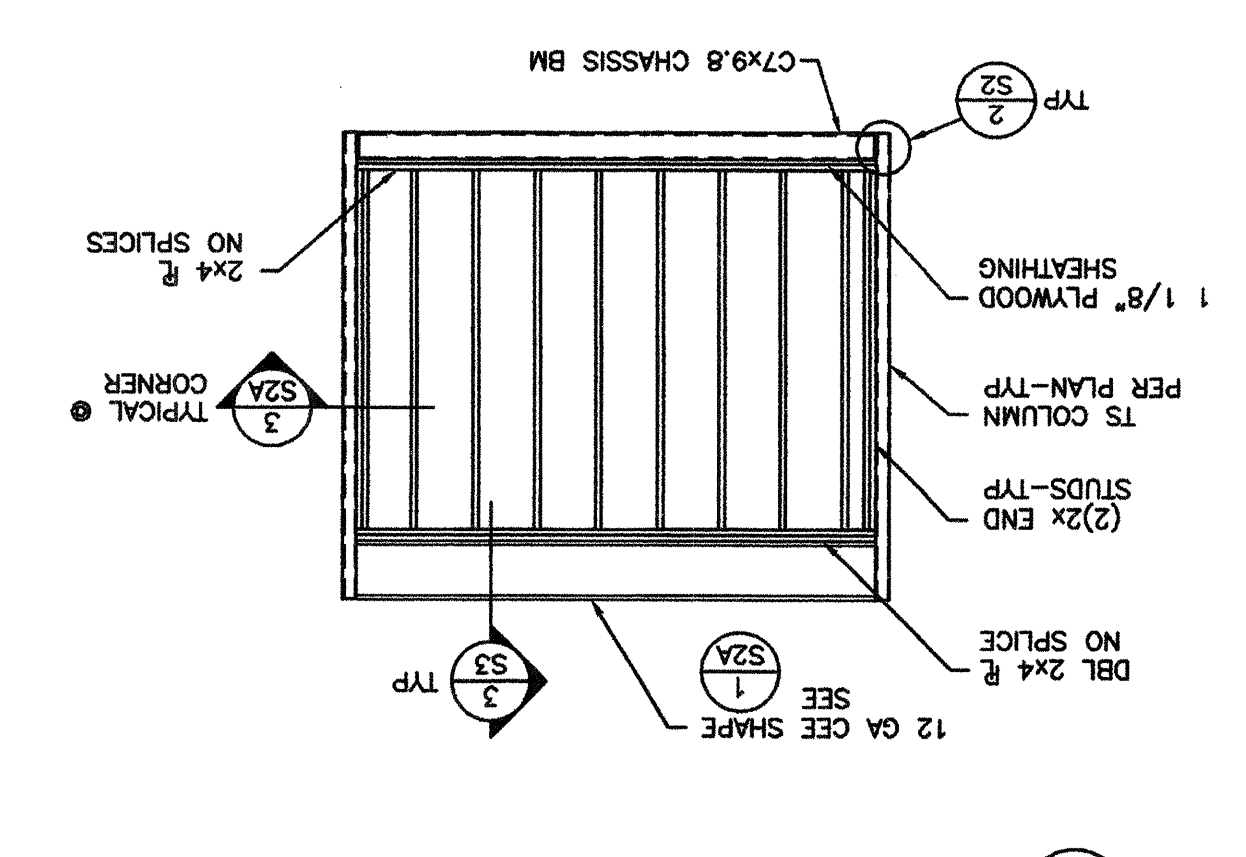
1/4" = 1'-0"



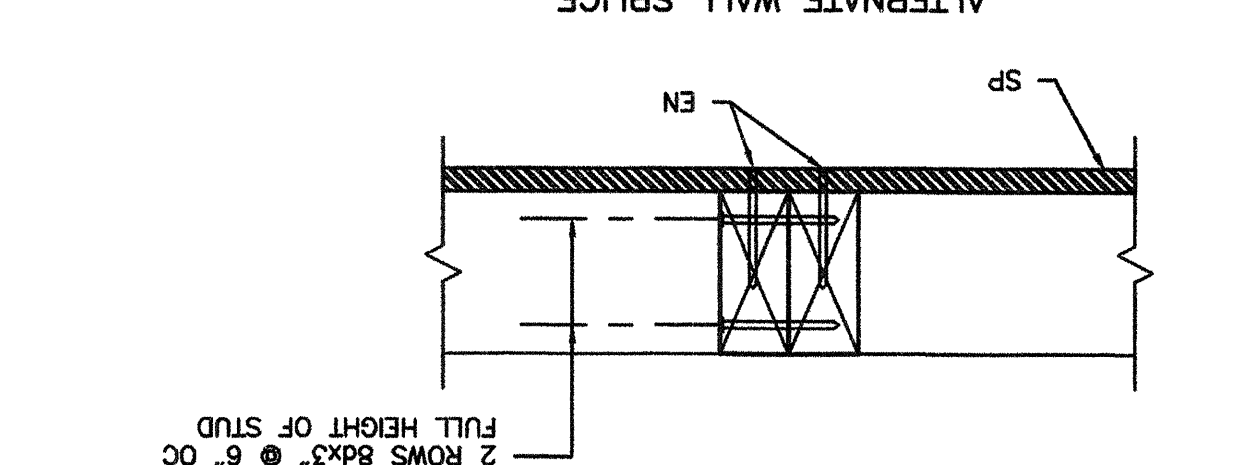
1/4" = 1'-0"



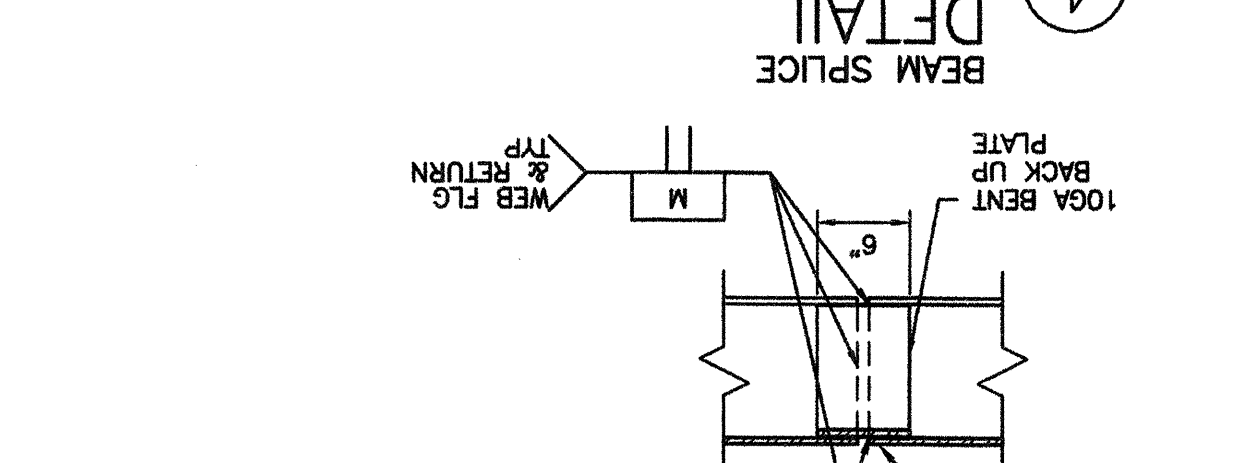
1/4" = 1'-0"



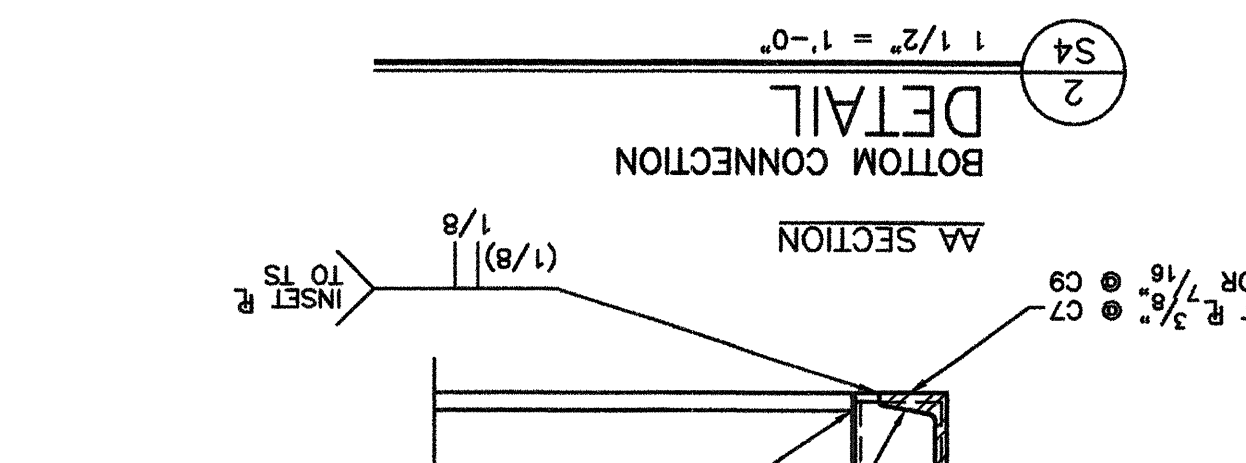
3" = 1'-0"



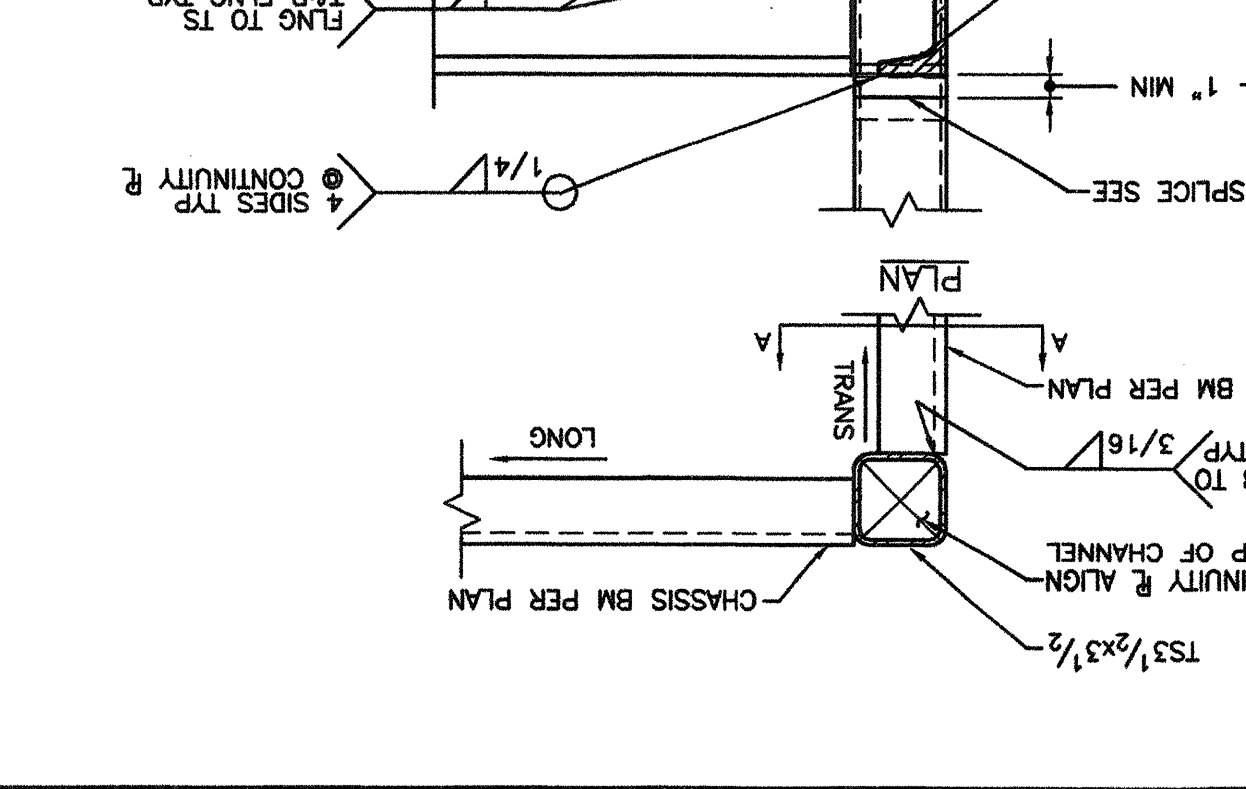
3" = 1'-0"



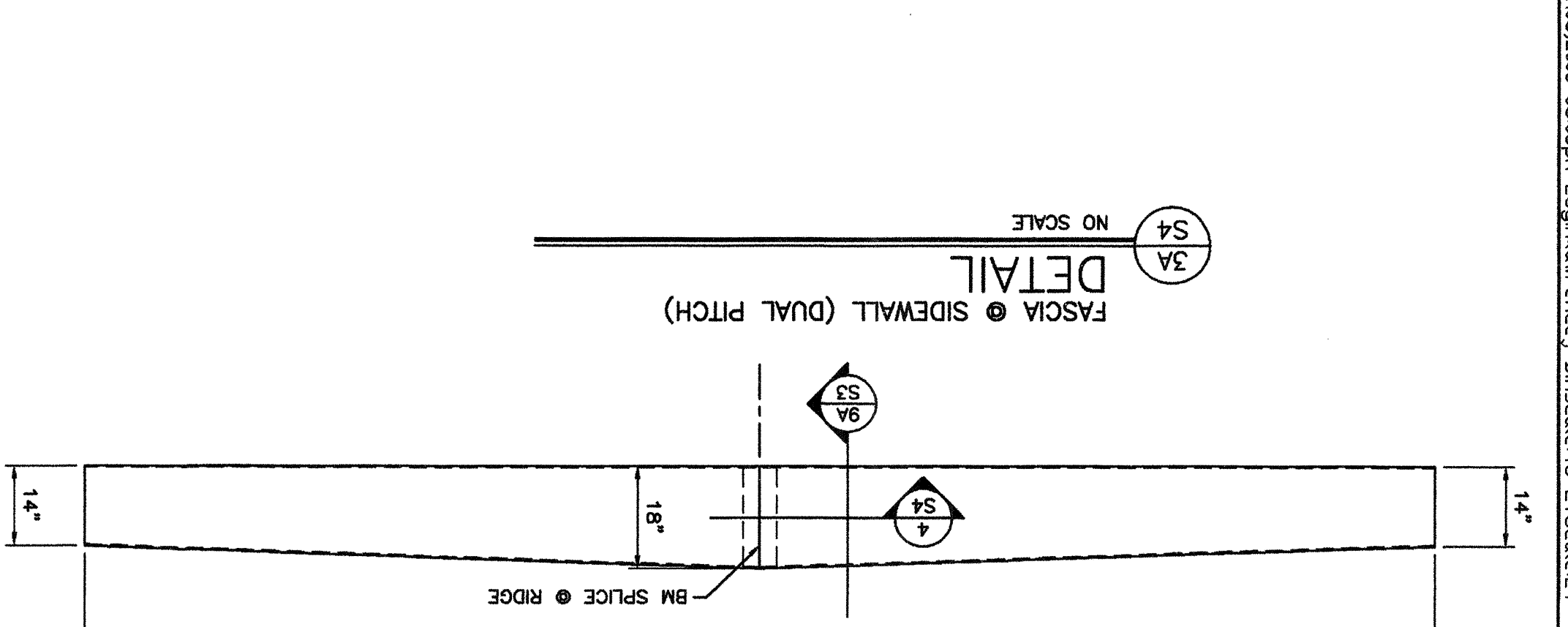
1 1/2" = 1'-0"



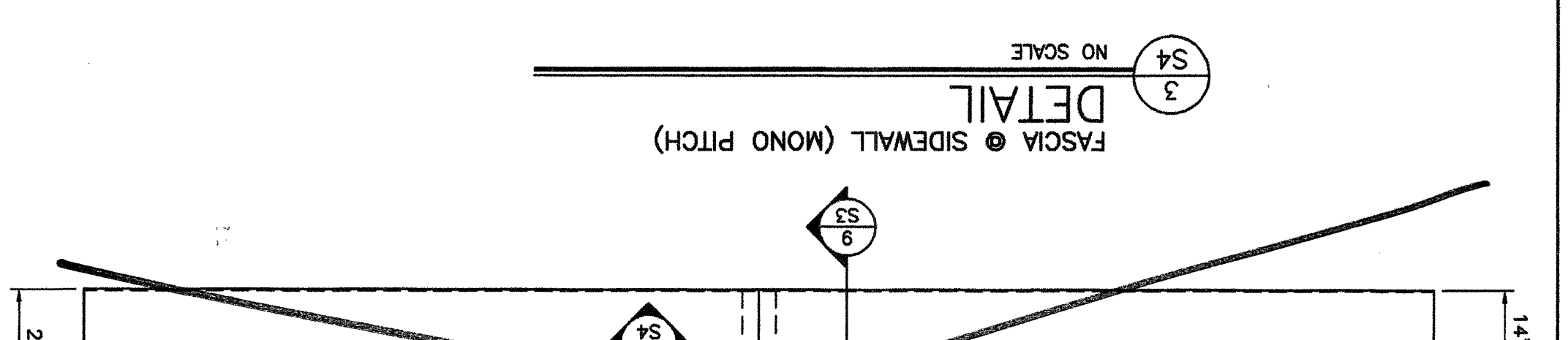
1 1/2" = 1'-0"



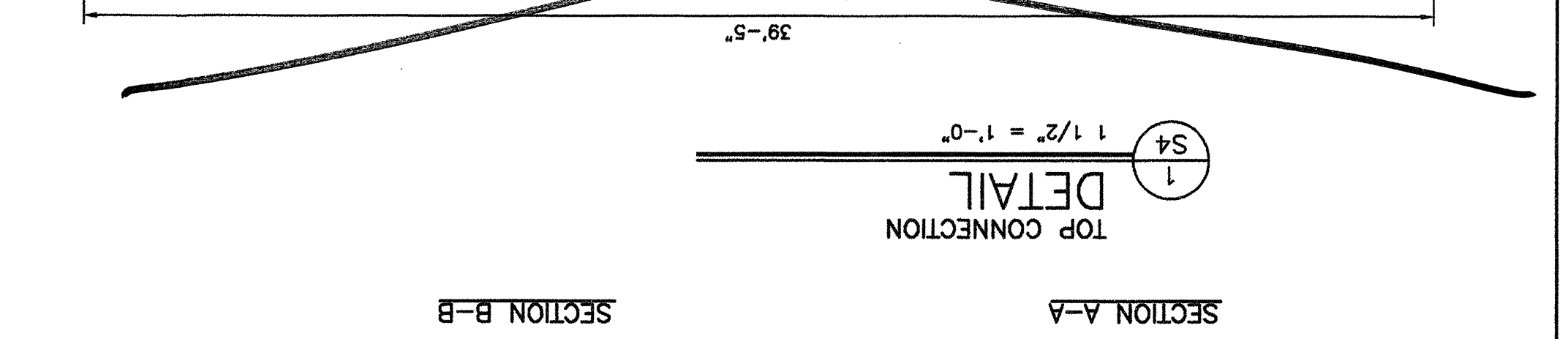
NO SCALE



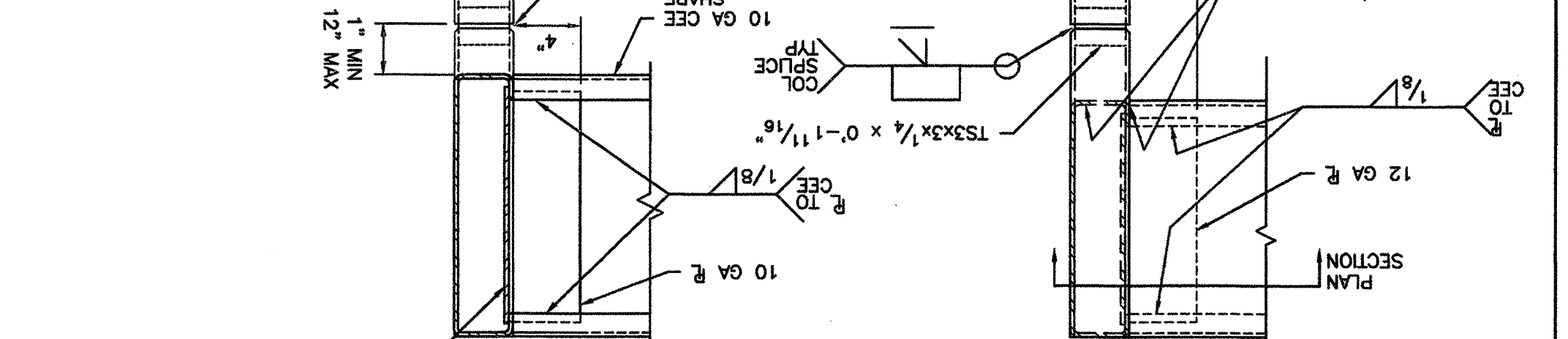
NO SCALE



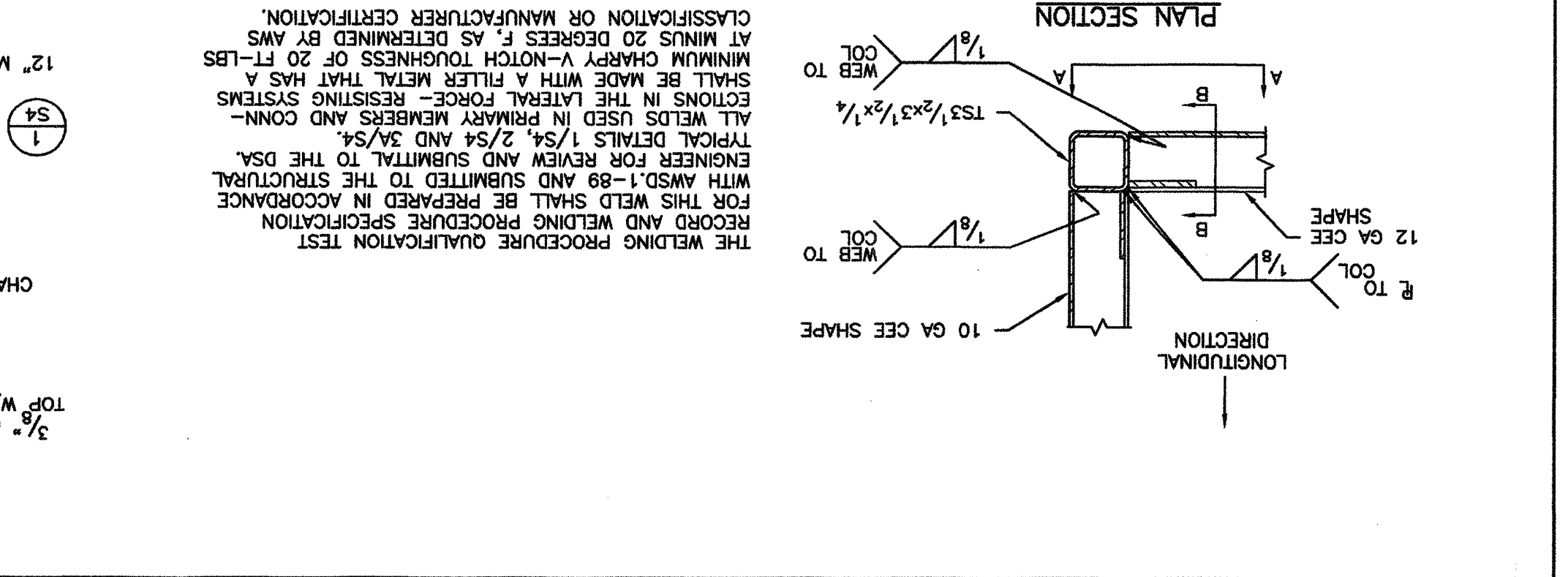
1 1/2" = 1'-0"



1 1/2" = 1'-0"



PLAN SECTION



THE WELDING PROCEDURE QUALIFICATION TEST WITH ANS-1-89 AND SUBMITTED TO THE STRUCTURAL ENGINEER FOR REVIEW AND SUBMITTAL TO THE DSA. TYPICAL DETAILS 1/4", 2/4" AND 3/4". ALL WELDS USED IN PRIMARY MEMBERS AND CONNECTIONS IN THE LATERAL FORCE-RESISTING SYSTEMS SHALL BE MADE WITH A FILTER METAL THAT HAS A MINIMUM CHARPY V-NOTCH TOUGHNESS OF 20 FT-LBS AT MINUS 20 DEGREES F, AS DETERMINED BY AWS CLASSIFICATION OR MANUFACTURER CERTIFICATION.

P:\20156-16\MCAD\STRUC\S4.dwg Time: 1/10/2003 10:03:09pm Logon: lawrence | Disc: c:\dwg | LTScale: 24