

CUSTOMER:
BAKERSFIELD CITY SCHOOL DISTRICT
WAYSIDE ELEMENTARY

LIGHTING PLAN & NOTES

DATE: 10-24-03
SCALE: NONE
DRAWN BY: YJA
CHECKED BY:
CHECKED BY:
SERIAL NO.

NO	DATE	DESCRIPTION	NO	DATE	DESCRIPTION

PROJECT NO.
SHEET NO. E1

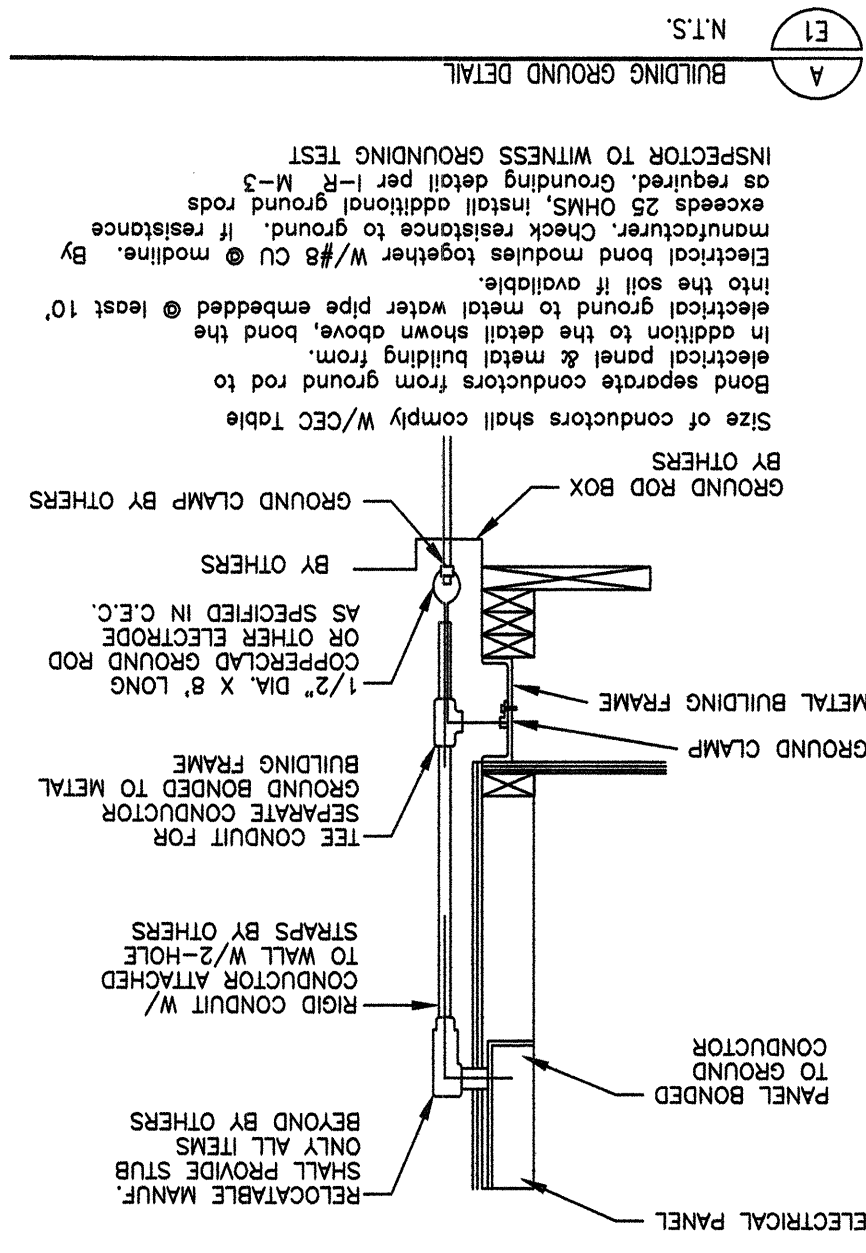
IDENTIFICATION STAMP
DIV. OF THE STATE ARCHITECT
FILE NO.
DATE: APR 29 2008
AC L W
F L S
SS
03-11-234

3 E1 1/4" = 1'-0"
ELECTRICAL DISTRIBUTION PLAN

LOAD

LOAD	WATTS	BRK.	A	B	C	WATTS	BRK.	A	B	C	RAMP	A	B	C	WATTS
SPACE	600	15	1	3	5	2000	2	1	5	2000	6	2	30	2000	2000
DUPLX RECEPT.	600	15	1	3	5	2000	2	1	5	2000	6	2	30	2000	2000
LIGHTS, FANS	550	15	1	3	5	2000	2	1	5	2000	6	2	30	2000	2000
WATER HEATER															
SPACE															
PHASE WATTAGE	550	600	550	600	550	600	550	600	550	600	550	600	550	600	550
TOTAL WATTS "A" LEG: 3100															
TOTAL WATTS "B" LEG: 3150															
TOTAL WATTS "C" LEG: 3150															
TOTAL WATTS: 6250															
AMPS 120/240V SINGLE PHASE															
100AMP BUS.															

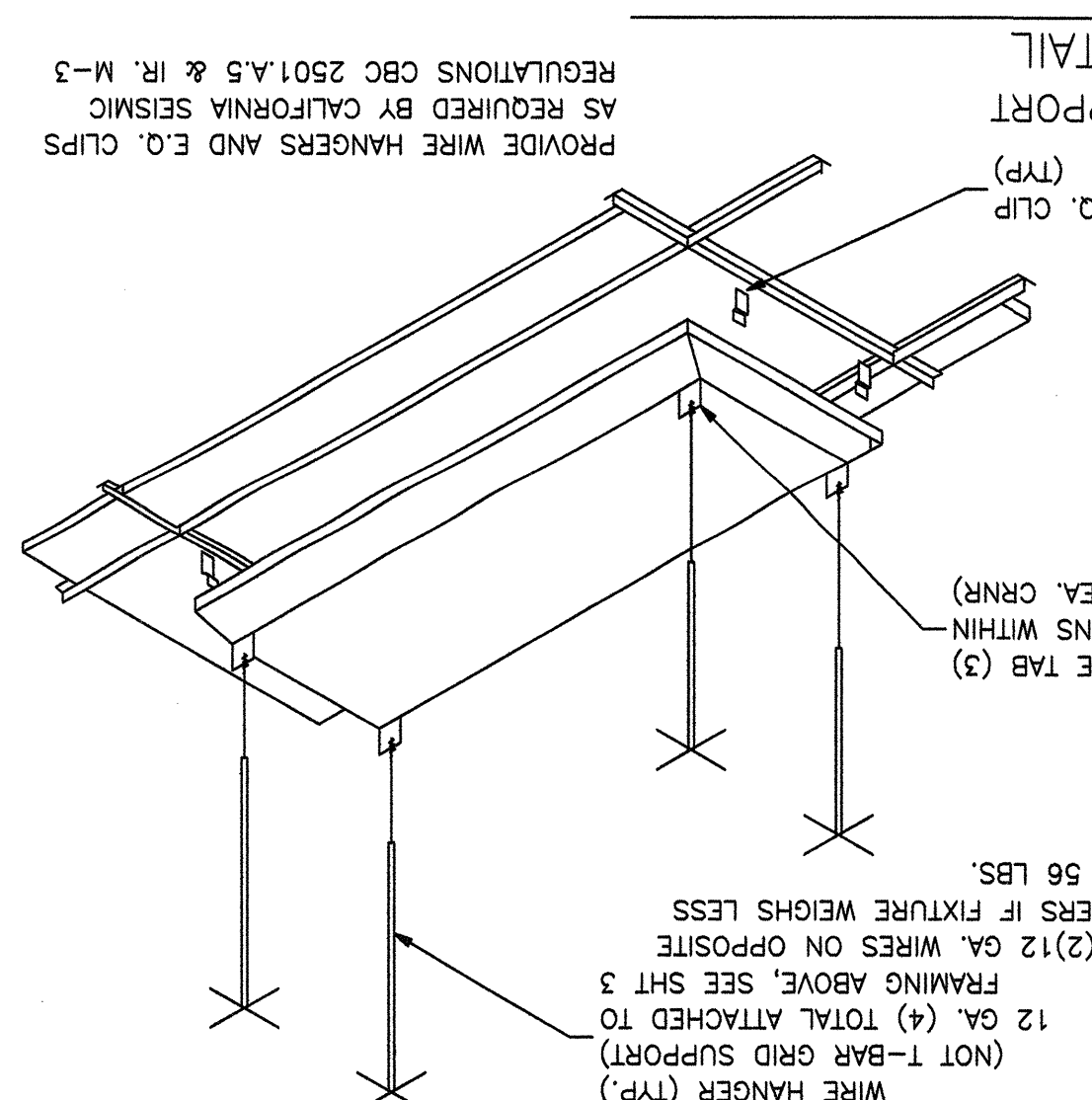
FEEDS: TO BE RUN BY THE DISTRICT EITHER UNDERGROUND OR OVERHEAD, SEE SITE ELEC. PLAN.



SCHOOL EQUIPMENT ANCHORAGE
THE SEISMIC ANCHORAGE OF ELECTRICAL EQUIPMENT SHALL CONFORM TO S.E.C. TITLE 24.
FOR ELECTRICAL EQUIPMENT
ALL ELECTRICAL EQUIPMENT SHALL BE BRACED OR ANCHORED TO RESIST A HORIZONTAL FORCE ACTING IN ANY DIRECTION USING THE FOLLOWING CRITERIA:
EQUIPMENT ON GRADE 20% OF OPERATING WEIGHT
EQUIPMENT ON STRUCTURE 30% OF OPERATING WEIGHT
FOR RACKS, MULTIPLE EQUIPMENT USE AS THE ABOVE. WALLS AND FOR MULTIPLE VERTICAL FORCE USE 1/3 X THE HORIZONTAL FORCE.
ABOVE WALLS ARE FOR AN IMPORTANCE FACTOR I = 1.0 AND SEISMIC ZONE 2 = 0.4
WHERE ANCHORAGE DETAILS ARE NOT SHOWN ON THE DRAWINGS THE FIELD ENGINEER OF THE DIVISION OF THE STATE ARCHITECT.
THE FIELD ENGINEER OF THE DIVISION OF THE STATE ARCHITECT.

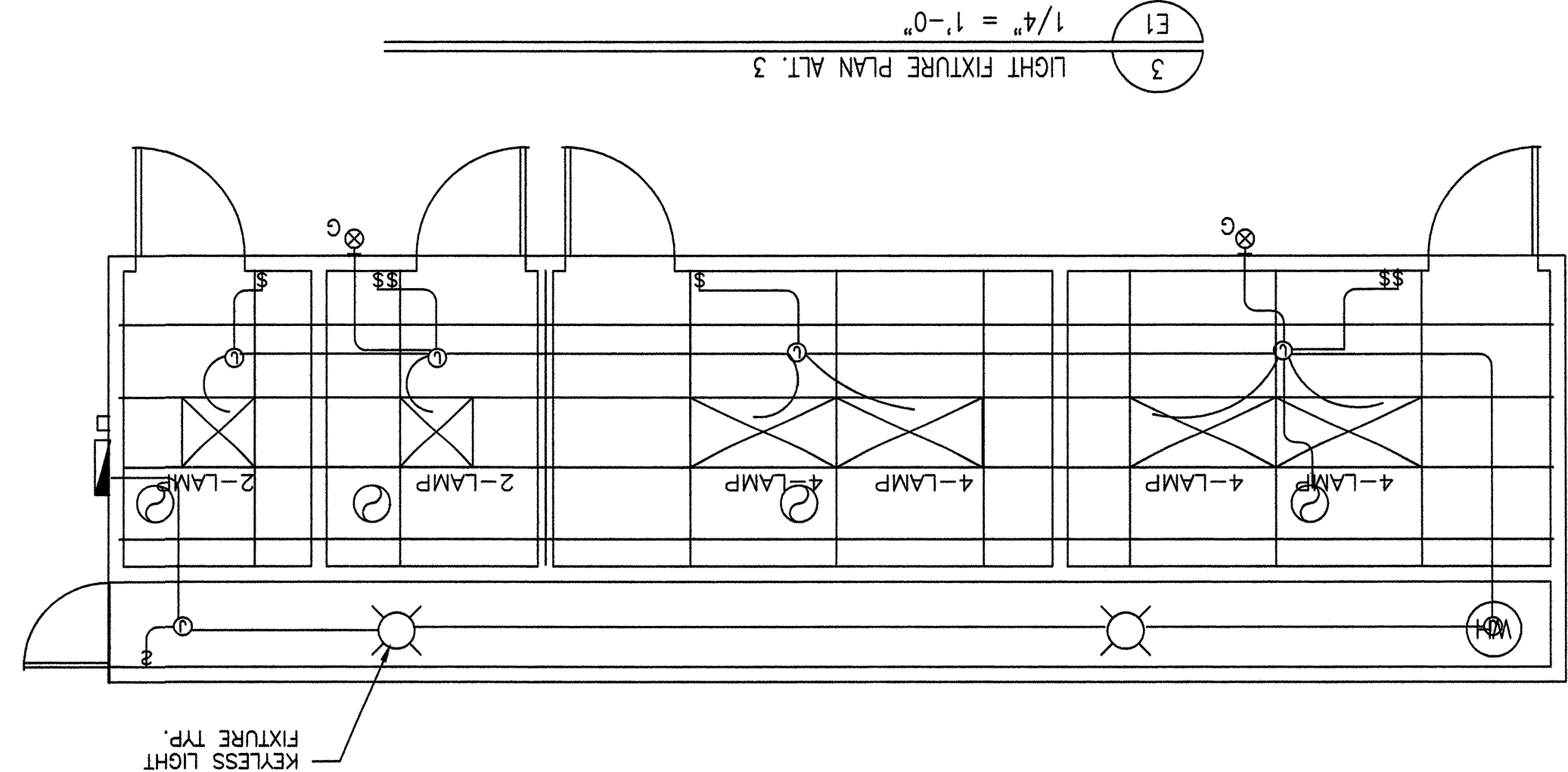
- SEE TYPICAL CLASSROOM LAYOUT FOR LOCATIONS OF ALL DEVICES.
FIGURE MOUNTING SHALL COMPLY WITH CALIFORNIA SEISMIC REGULATIONS.
1. Electrical service drop and connections supplied by others.
 2. Manufacturer to provide stub-out from back of electrical panel through the exterior wall for fitting for grounding cable.
 3. Electrical panel board shall be recess mounted inside the building. Sized to accommodate all connected loads including spaces as shown. Overcurrent protective devices in the panel boards have adequate short circuit interrupting capacity. All buses including bus shall be copper or aluminum.
 4. 2x4 fluorescent fixtures shall be steel frame, lens shall be hinged and locked in place by the locking devices. The lens diffusers shall be KHS, Inc. #KSH-12, Carolina, Inc. #C-12 or Paskolite, Inc. #PL21A. Minimum lens thickness shall be .125 inch. Fluorescent ballast shall be energy saver while maintaining full light output, class "P" or equipped with thermal protectors, grounded against failure for (2) years and be replaced from inside the fixture.
 6. Clock - 12" dial clock on clock outlet.
- A) Clock shall be General Electric model 2912 129V 60 cycle
B) Clock outlet shall be Bryant #2828 or equal with separable hanging clip & opp'd recept.

SYMBOL	DESCRIPTION	WATTS	MANUFACTURER
⊗	2'x4' FLUORESCENT DROP IN FIXTURE, ACRYLIC PRISMATIC LENS, T-8 ELECTRONIC BALLASTS (3) 35 WATT TUBES, WT. 27 LBS.	SP41	MASTER 24GP33ZPSA11K0YU1
⊗	2'x4' FLUORESCENT SURFACE MOUNTED EXTERIOR LIGHT WITH IMPACT RESISTANT ENCLOSURE.	22GP2U6FSA11K2YF1	CRESCENT
⊗	2'x2' 2-LAMP FLUORESCENT FIXTURES	32 W	22GP2U6FSA11K2YF1
⊗	2'x4' 4-LAMP FLUORESCENT FIXTURES	156 W	XT2GVA44ZIL
⊗	2'x2' 2-LAMP FLUORESCENT FIXTURES	32 W	CRESCENT
⊗	2700 K (2) 7W OR EQUAL	ENTERTON 7026B-L	OR EQUAL



- GENERAL NOTES
1. GROUNDING ELECTRODE CONDUCTOR SIZED PER NEC
 2. ALLOW FOR 1/2" MOVEMENT IN ANY DIRECTION IF PAD
 3. PROVIDE BOND TO BLOC, STEEL & PANEL (#8 CU)
 4. PANEL TO LISTED FOR USE AS SERVICE EQUIPMENT.
- FIGURE NOTES:
1. ALL FLUORESCENT LIGHT FIXTURES SHALL HAVE ENERGY SAVING LAMPS AND BALLASTS
 2. LUMINAIES/BALLASTS SHALL BE CERTIFIED PER CALIFORNIA BUILDING CODE TITLE 24
 3. FLUORESCENT LIGHT FIXTURE TYPE "A" SHALL BE CONTROLLED BY PROVIDE TWO LAMPS AND SWITCH (SB) SHALL CONTROL THE TWO OUTER LAMPS.
- FIRE ALARM SYSTEM
1. THE FIRE ALARM SYSTEM SHALL CONFORM TO THE CALIFORNIA ELECTRICAL CODE
 2. INSTALLATION OF THE FIRE ALARM SYSTEM SHALL NOT BE STARTED UNTIL DETAILED PLANS AND SPECIFICATIONS, INCLUDING CALIFORNIA STATE FIRE MARSHAL LISTING NUMBERS FOR EACH COMPONENT OF THE SYSTEM HAVE BEEN APPROVED BY THE DIVISION OF THE STATE ARCHITECT.
 3. UPON COMPLETION OF THE INSTALLATION OF THE FIRE ALARM SYSTEM, A SATISFACTORY TEST OF THE ENTIRE SYSTEM SHALL BE MADE IN THE PRESENCE OF THE ENFORCING AGENCY.

- STANDARD ELECTRICAL SYMBOLS
- FLUORESCENT LIGHTING FIXTURE - RECESSED.
 - FLUORESCENT LIGHTING FIXTURE - WALL MOUNTED (EXTERIOR)
 - INCANDESCENT LIGHTING FIXTURE - WALL MOUNTED (INTERIOR).
 - DUPLX WALL CONVENIENCE OUTLETS + 18".
 - SINGLE POLE LIGHT SWITCHES + 48", HUBBELL PREMIUM, BRYANT HEAVY DUTY, OR LEVITON SPECIFICATIONS GRADE.
 - ELECTRICAL CROSSOVER J-BOXES ABOVE 1-BAR CEILING #1-4"X1" #22 4"X2"
 - WALL CLOCK OUTLET WITH POWER OUTLET + 84".
 - SWITCH SUBSCRIPTS - 0=DEVICE CONTROLLED.
 - 15 AMP DUPLX RECEPTACLE + 18", HOSPITAL GRADE.
 - PANTRYBOARD - SEE SCHEDULE.
 - JUNCTION BOX - SIZE AND TYPE AS REQUIRED.
 - TERMINAL CABINET - SIZE AND TYPE AS NOTED.
 - CONDUIT CONCEALED BELOW FLOOR OR GRADE.
 - CONDUIT CONCEALED IN CEILING OR WALL.
 - HOMERUN TO RESPECTIVE PANEL TO TERMINAL.
 - BRANCH CIRCUIT WITHOUT FURTHER DESIGNATION IS A #14 WIRE INDICATES #14 (GREEN) GROUND WIRE, OTHER SIZES AS INDICATED.
 - CIRCUIT, FOR MORE THAN 2#14 WIRES AS FOLLOWS, ---#10, ---#8, ---#6 ETC.
 - #14 ETC. FOR OTHER SIZES AS FOLLOWS, ---#10, ---#8, ---#6 ETC.
 - FIGURE IDENTIFICATION - LETTER INDICATES TYPE.
 - ABBREV. FOR NOT IN ELECTRICAL SECTION OF THESE PLANS AND SPECS.
 - [W.E.F.] WALL MOUNTED EXHAUST FAN N.I.E.S. CONNECT AS REQUIRED.
 - 50 AMP 250 VOLT RANGE RECEPTACLE.
 - FIRE ALARM STATION - OUTLET ONLY, 4" SQ. BOX W/ SINGLE DEVICE RING AND COVER + 48" CENTERLINE
 - FIRE ALARM HORN - OUTLET ONLY - 4" SQ. BOX W/ SINGLE DEVICE RING AND COVER + 84"
 - FIRE ALARM VISUAL ALARM - OUTLET ONLY - 4" SQ. BOX W/ SINGLE DEVICE RING AND COVER + 80".
 - A.F.F. BUT NO GREATER THAN + 96" IF CEILING MOUNTED PER NFPA72 TABLE 6-4.4.1(b).
 - SPEAKER - OUTLET ONLY - 4" SQ. BOX W/ SINGLE INTERCOM TELEPHONE - OUTLET ONLY - 4" SQ. BOX W/ SINGLE DEVICE RING AND COVER + 48"
 - FIRE ALARM MINI HORN - OUTLET ONLY - 4" SQ. BOX W/ SINGLE DEVICE RING AND COVER + 90" TO TOP AND NOT LESS THAN 6" BELOW FINISHED CEILING.



DATE: 10-24-03
SCALE: NONE
DRAWN BY: YJA
CHECKED BY:
CHECKED BY:
SERIAL NO.