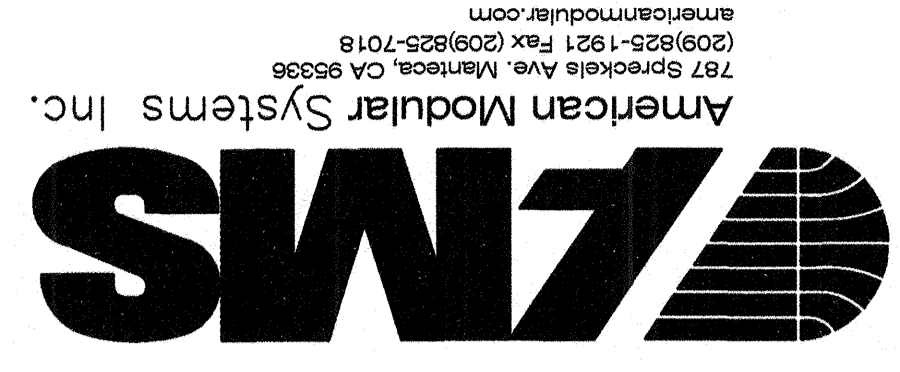


24 X 40 (HP ES)
RELOCATABLE
CLASSROOMS



INTERIOR ELEVATIONS AND OPTIONS

CUSTOMER: BAKERSFIELD CITY SCHOOL DISTRICT

DATE: 04/21/08
SCALE: NONE
DRAWN BY: RS
CHECKED BY:
SERIAL NO.:

REVISIONS

NO.	DATE	DESCRIPTION

PROJECT No. _____
SHEET No. 4

- A - CARPET PER STATE OF CALIF SPEC COMPLYING WITH GROUP 1, TYPE A OR TYPE B, CLASS 2, DENSITY 4600, DIRECT GLUE DOWN.
- B - VINYL SHEET FLOORING
- C - VLT. ARMSTRONG STANDARD OR EXCELON
- D - TOP SET BASE, 6" BRN/ANTHRA OR SANDOVAL
- E - WALL FINISH, 1/2" W.R. GYP BOARD, TAPE, TEXTURE, PAINTED FINISH
- F - 1/2" W.R. GYP BOARD, TAPE, TEXTURE, PAINTED FINISH
- G - 1/2" GYP BOARD, TAPE, TEXTURE, PAINTED FINISH
- H - 3/32" F.R.P. OVER 1/2" W.R. GYP BOARD
- J - 1/2" VINYL TACKBOARD CLASS 1 OVER 5/8" TYPE "X" GYP BOARD BACKING

WINDOW SCHEDULE SEE SHT. 1 FOR LOCATION

WINDOW NO.	AMT.	TYPE	WIDTH	HEIGHT	FINISH	GLASS TYPE
(A)	2	SLD.	8'-0"	4'-0"	BRONZE	SOLAR GREY

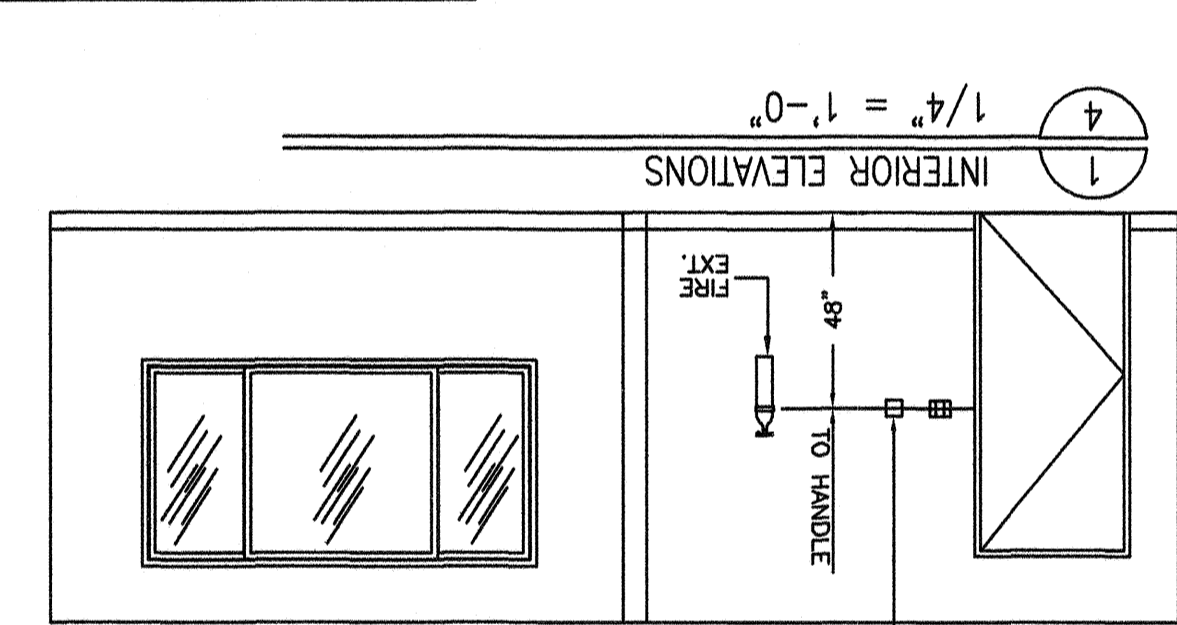
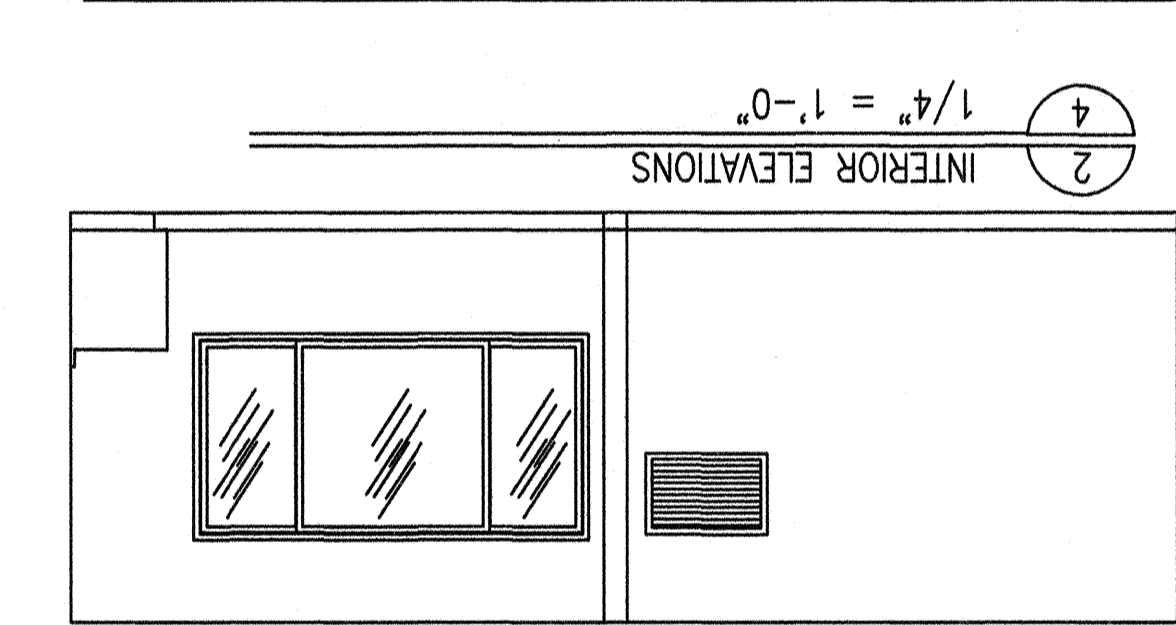
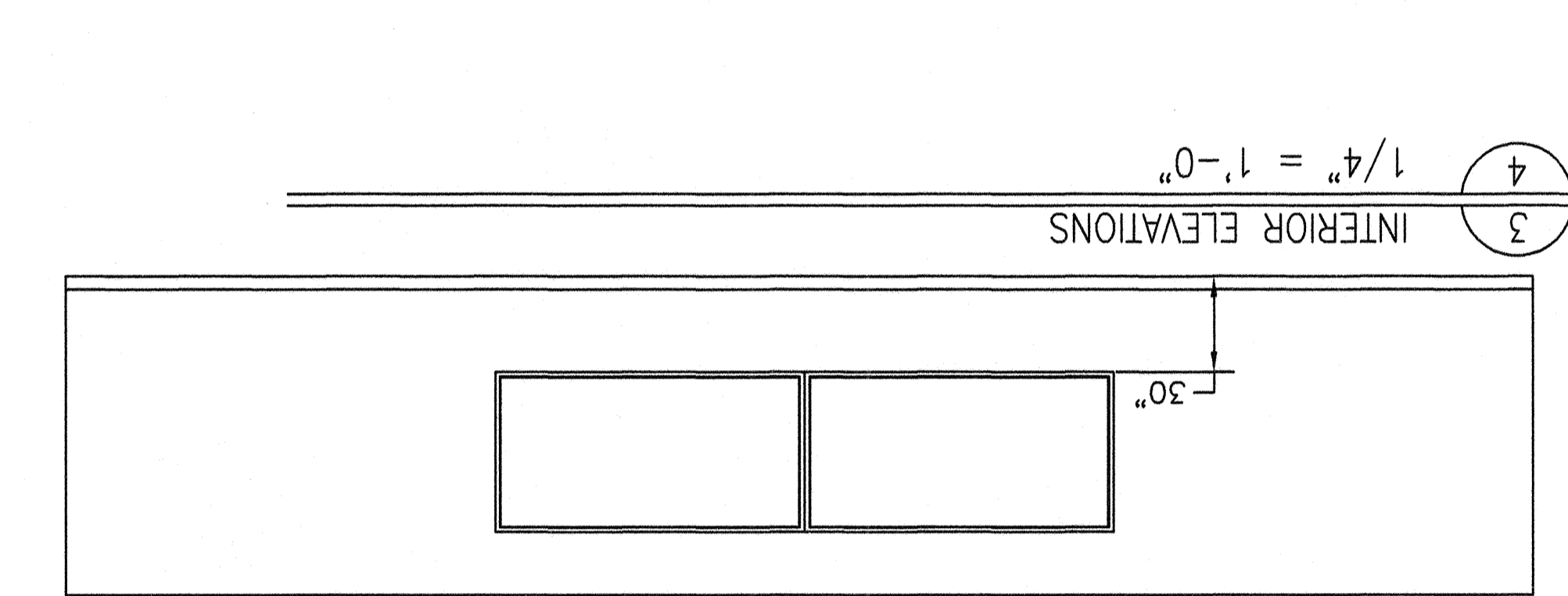
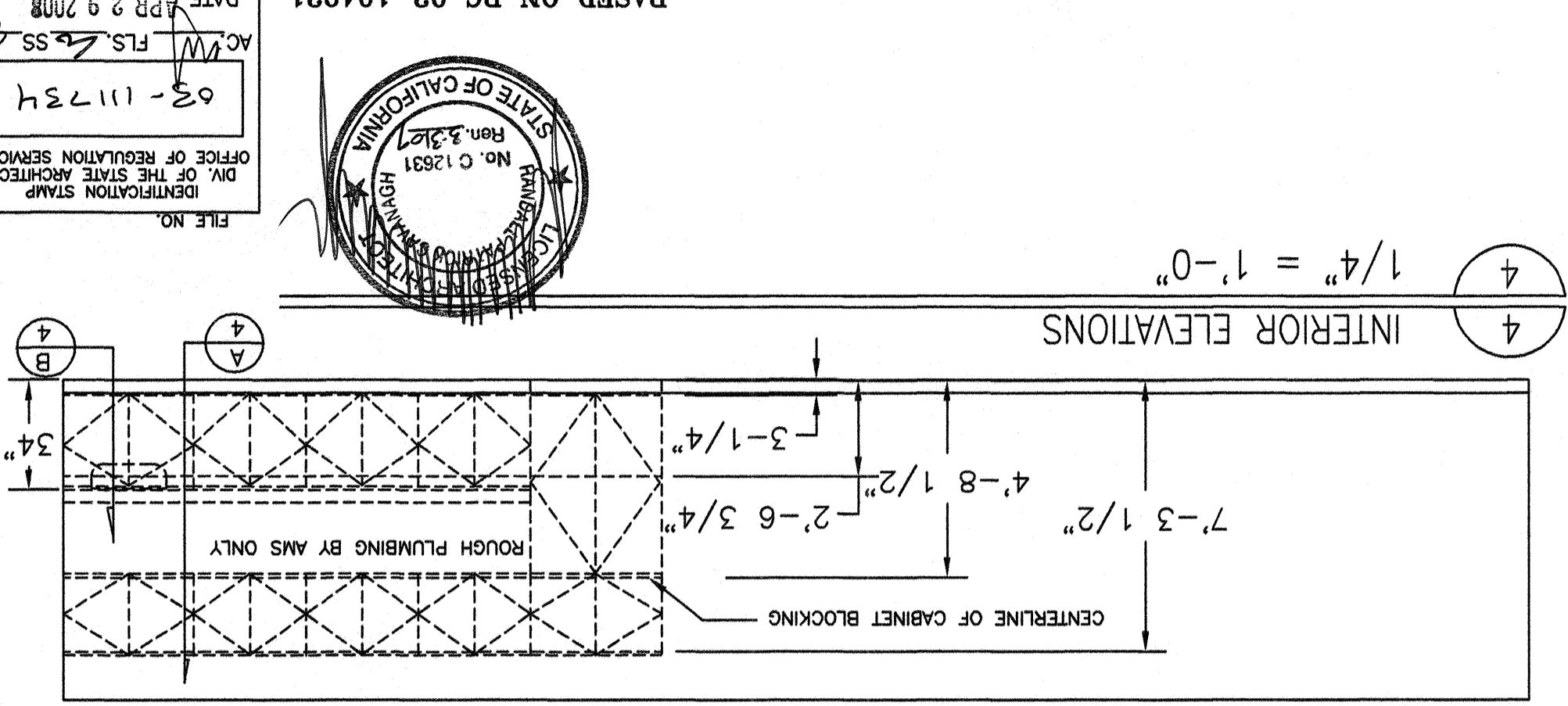
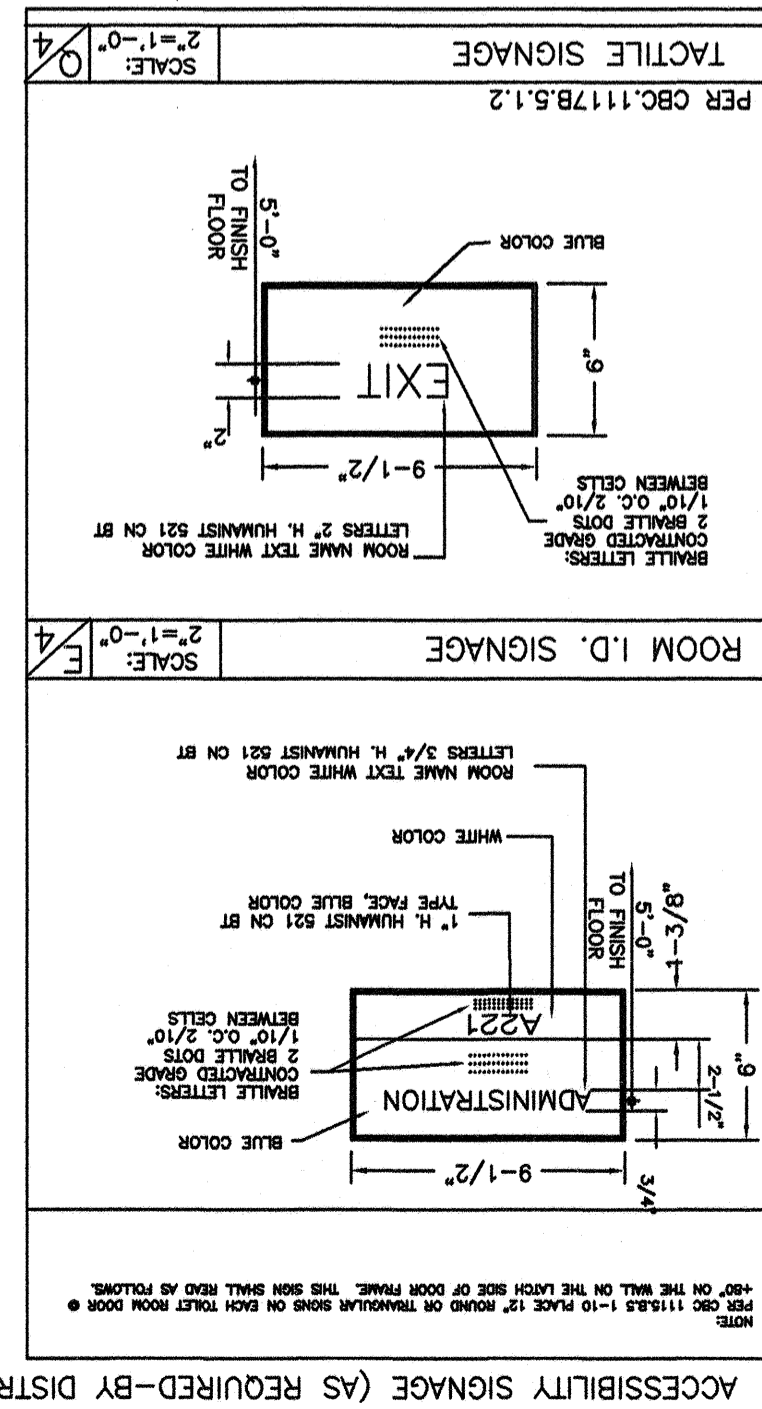
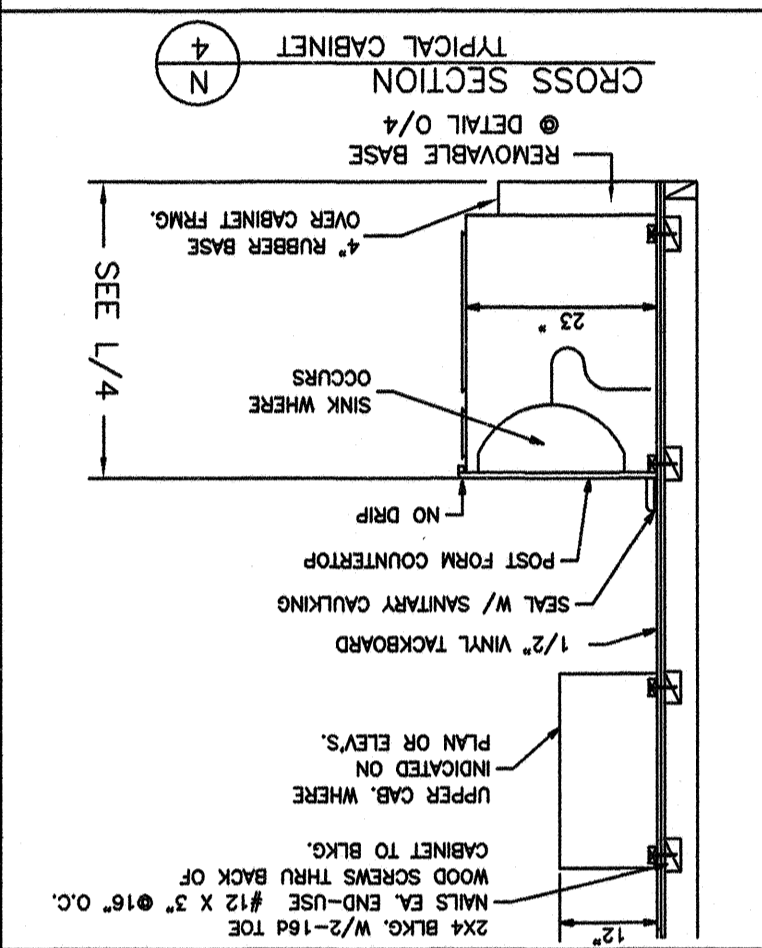
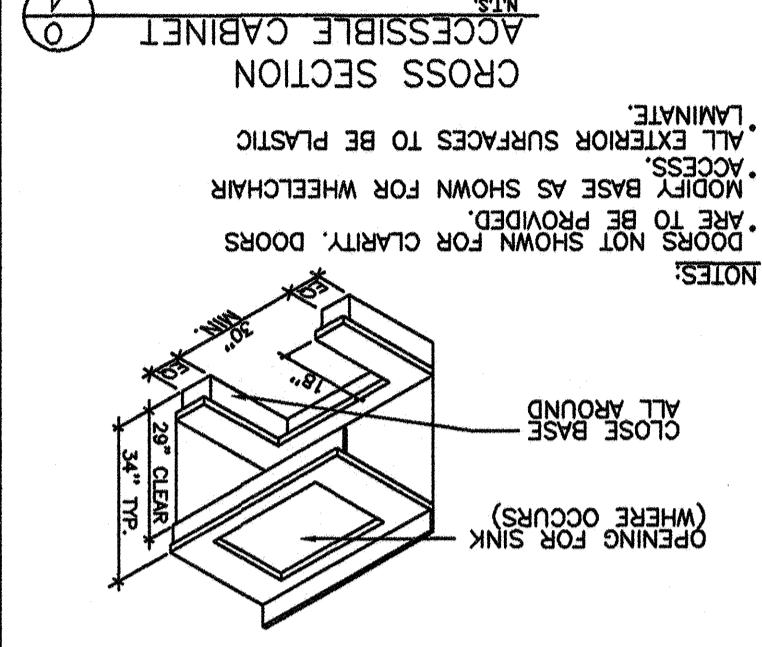
- FINISHES
- | ROOM NO. | ROOM NAME | FLOOR | BASE | FRONT | REAR | RIGHT | LEFT | CEILING | HEIGHT |
|----------|-----------|-------|------|-------|------|-------|------|---------|--------|
| 1 | CLASSROOM | A | D | F | F | F | F | U | 8'-6" |

DOOR SCHEDULE SEE SHT. 1 FOR LOCATION

DOOR NO.	FRAME SIZE	FRAME OPENING	MATERIAL	TYPE	FIRE RATING	HARDWARE SET NO.	QUANTITY	HEAD DETAIL	JAMB DETAIL	SILL DETAIL	SWITCH DETAIL	JAMB THROAT	NOTE NO.
1	3'-0" x 7'-0"	N/A	H.M.	A	1	H.M.	6/1	6/1	6/1	4/1	5/1		

ROOM FINISHES SCHEDULE

ROOM NO.	ROOM NAME	FLOOR	BASE	FRONT	REAR	RIGHT	LEFT	CEILING	HEIGHT
1	CLASSROOM	A	D	F	F	F	F	U	8'-6"



STATE OF CALIFORNIA
DIVISION OF CONSTRUCTION SAFETY
No. C 12831
Rev. 5/2/07
FILE NO. 03-111734
DATE APR 29 2008

BASED ON PC 02-104921