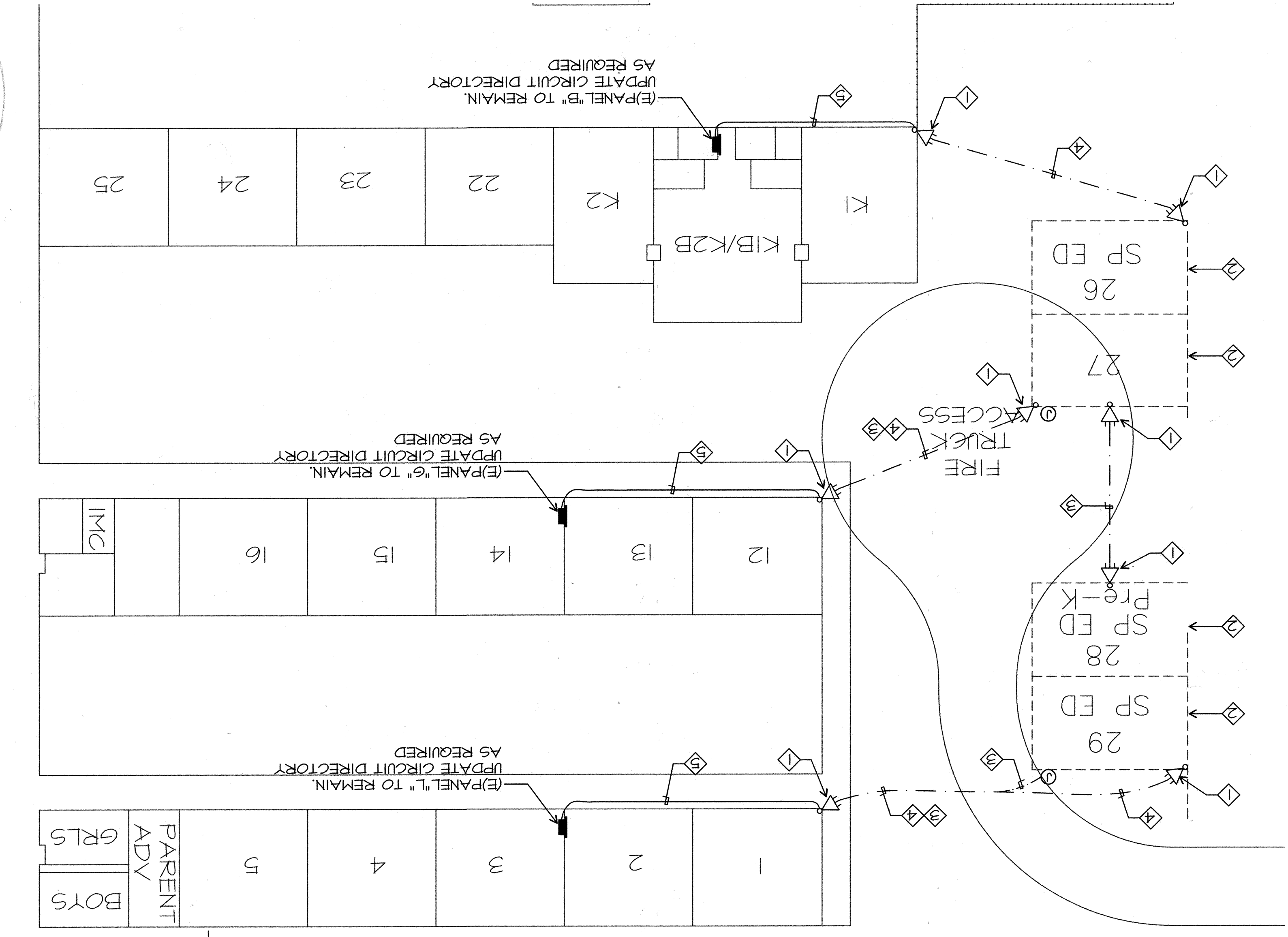


# SITE PLAN - ELECTRICAL DEMOLITION

SCALE: 1" = 20'-0"

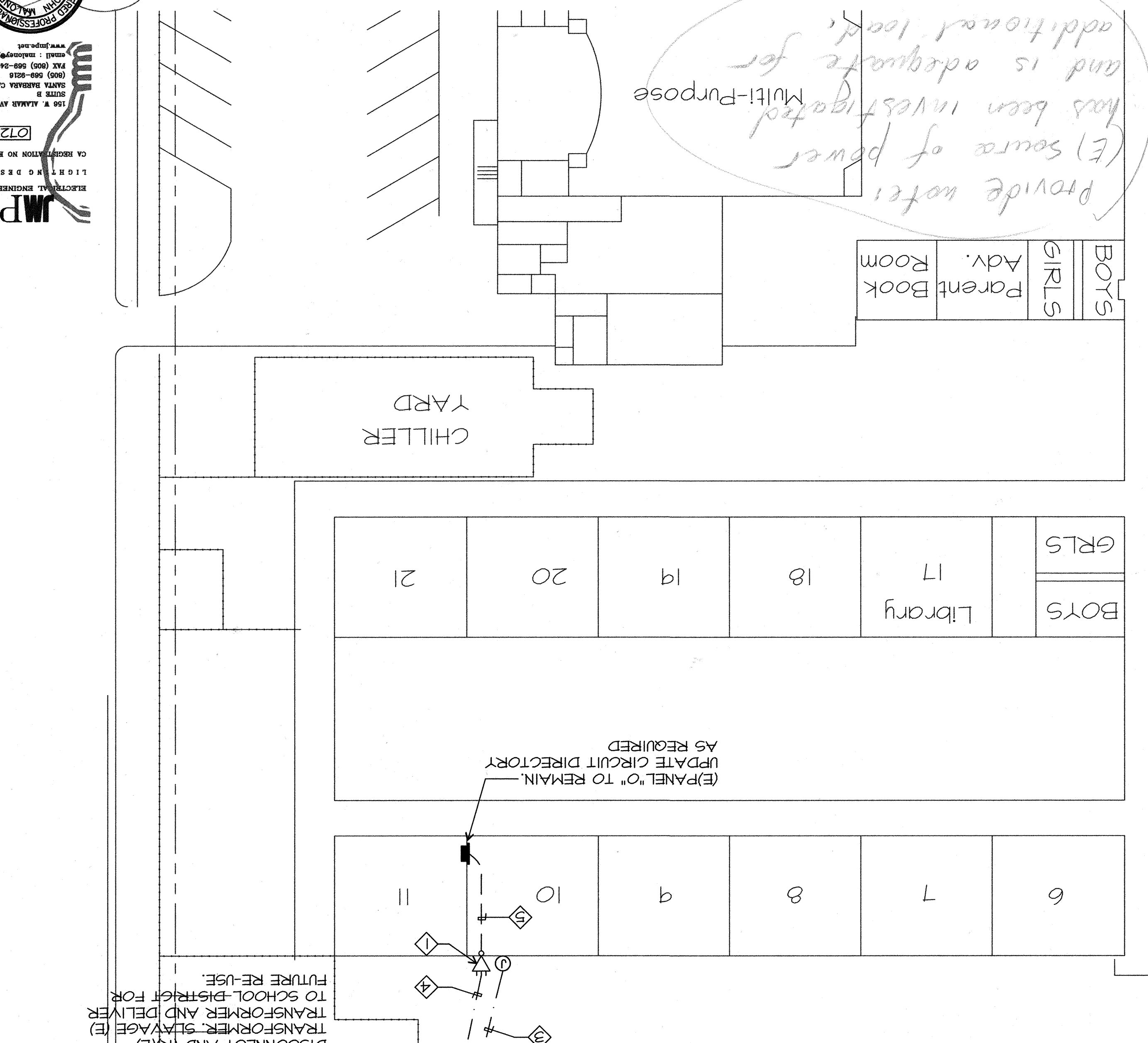


- ELECTRICAL DEMOLITION NOTES**
- ◇ DISCONNECT AND REMOVE (E) WEATHERHEAD.
  - ◇ FEEDER, (R) ABANDONED RACEWAY AND FEEDER BACK TO PANELBOARD AND LABEL ABANDONED CIRCUIT BREAKER AS "SPARE". (R) ABANDONED FIRE ALARM, TELEPHONE AND DATA WIRING BACK TO SOURCE OF TERMINATION.
  - ◇ (R) OVERHEAD LOW VOLTAGE LINE BACK TO SOURCE OR POINT OF ORIGIN.
  - ◇ (R) ABANDONED RACEWAY AND BRANCH CIRCUIT WIRING FEEDING THE (E) PORTABLE BACK TO THE PANELBOARD.
  - ◇ NOTE: CONTRACTOR SHALL PATCH AND PAINT WHERE ITEMS ARE REMOVED OR WHERE THE EXISTING BUILDING IS DISTURBED DURING CONSTRUCTION.

DISCONNECT AND (R)(E) POWER FEEDER AT PORTABLE PANEL. (R) ABANDONED RACEWAY AND FEEDER WIRES BACK TO (E) PORTABLE DISTRIBUTION PANEL. REMOVE ALL LOW VOLTAGE CABLING BACK TO SOURCE TERMINATION POINT. TYPICAL OF (4) PORTABLES.

DISCONNECT AND (R) PANEL DISTRIBUTION PANEL. DISCONNECT AND (R) FEEDER AND FEEDER BACK TO TRANSFORMER AND ABANDONED RACEWAY. SALVAGE (E) PANEL AND ALL INTERIOR CIRCUIT BREAKERS. DELIVER TO SCHOOL DISTRICT. (E) 50KVA TRANSFORMER DISCONNECT AND (R)(E) TRANSFORMER AND DELIVER TO SCHOOL DISTRICT FOR FUTURE RE-USE.

*Provide notes (E) source of power has been investigated for Multi-Purpose and is adequate for additional loads.*



Sheet Title: **SITE PLAN ELECTRICAL DEMOLITION**  
 Project Name & Address: **WAYSIDE ELEMENTARY 9 PORTABLE CLASSROOMS - 1 RESTROOM**  
 BAKERSFIELD CITY SCHOOL DISTRICT  
 1000 MING AVE. BAKERSFIELD, CA 93307

Issue Date: 12/07/07  
 Designer: [Blank]  
 DR: [Blank]  
 PC: [Blank]

App03 111734  
 DATE APR 29 2008  
 DIV. OF THE STATE ARCHITECT  
 IDENTIFICATION STAMP

Job No.: **3747**  
 Sheet No.: **E2.00**

J.M.P.E. ELECTRICAL ENGINEERING  
 158 W. ALHAMBRA AVE.  
 SUITE # [Blank]  
 BAKERSFIELD, CALIFORNIA 93310  
 (805) 866-8215  
 FAX (805) 866-0505  
 www.jmpe.com

Integrated designs by SOMMAM, Inc.  
 ARCHITECTURE • ENGINEERING • INTERIOR DESIGN • CONSTRUCTION MANAGEMENT  
 6011 N. Fresno, Suite 330 - Fresno, California 93710  
 Phone (559) 458-0881 Fax (559) 458-0887 E-Mail: design@sommam.com  
 www.integrateddesigns.com

Ownership of Documents  
 This document, the ideas and designs incorporated herein, as an instrument of Professional Service is the property of Integrated Design by SOMMAM, Inc. and is not to be used, in whole or in part for any other project without written authorization. © COPYRIGHT 2007