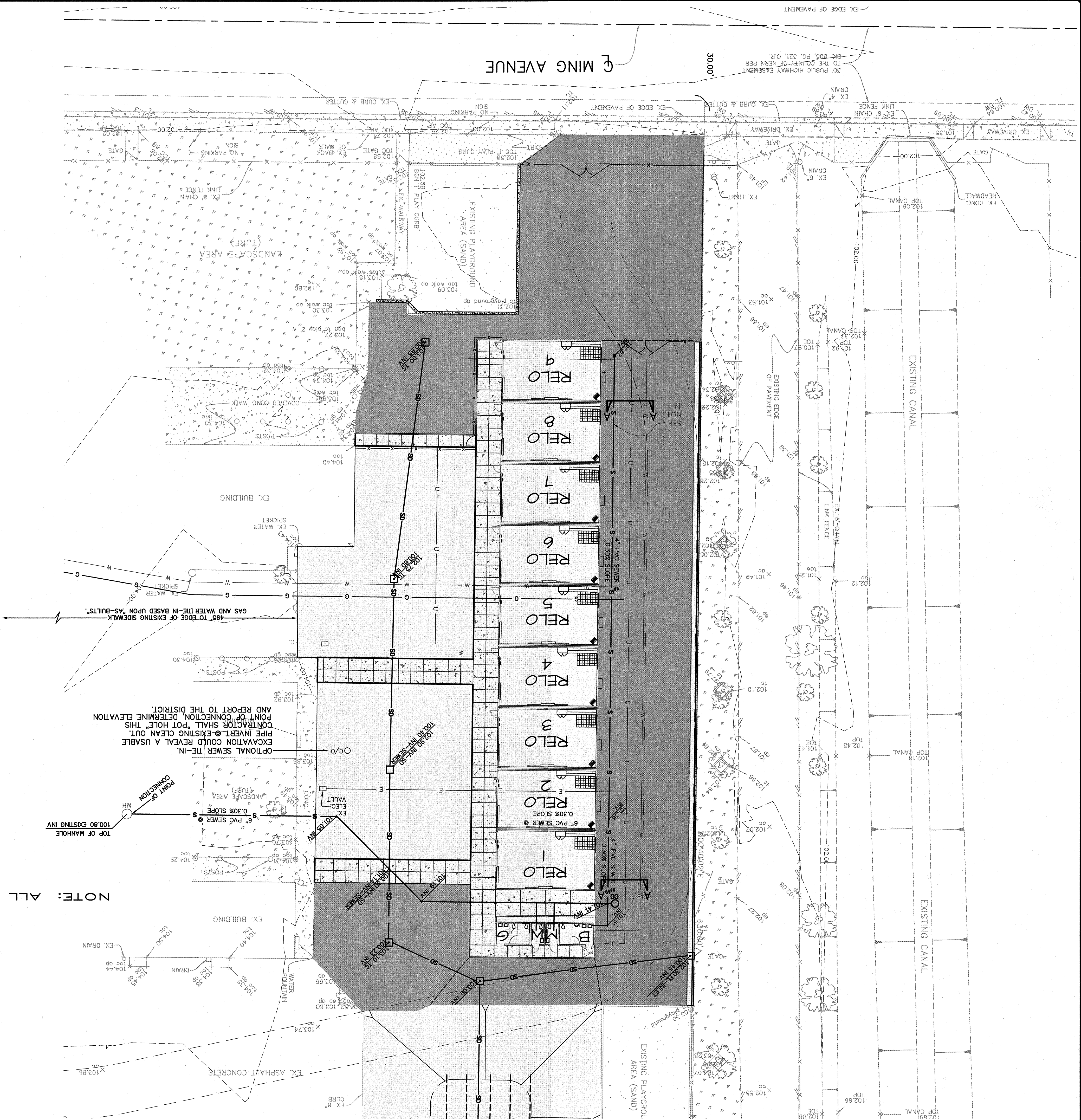


SEE SHEET 8



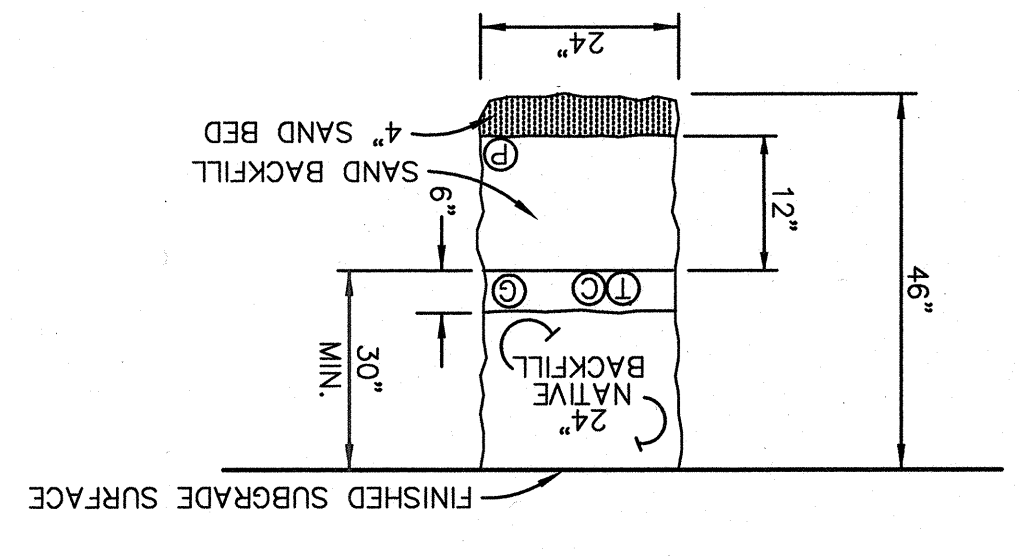
NOTE: ALL UTILITIES SHOWN TO SHOW POTENTIAL CONFLICTS.

LEGEND

- = PROPOSED 6" SEWER (PVC @ 0.30% MIN. SLOPE)
- = PROPOSED 2" GAS LINE
- = PROPOSED 2" WATER LINE (C900 - CLASS 150)
- = PROPOSED ELECTRICAL LINE
- = PROPOSED 6" PVC STORM DRAIN
- = PROPOSED UTILITY TRENCH

DRY UTILITY NOTES

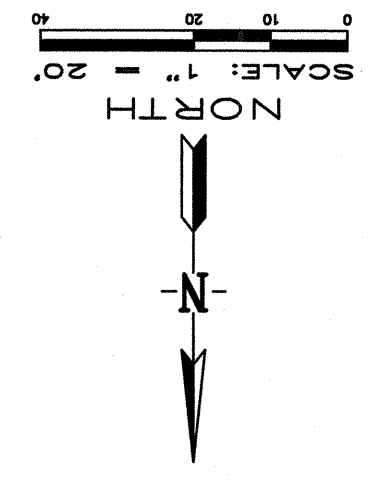
1. COORDINATE WITH DISTRICT MAINTENANCE PERSONNEL FOR UTILITIES TIE-IN POINTS NOT KNOWN DURING THE FIELD SURVEY OR SUBSEQUENT RESEARCH.
2. ALL CONDUITS SHALL BE SCHEDULE 40 AND ALL SPICE BOXES TO ADHERE TO CURRENT CODES.
3. THE EXACT LOCATION DRY UTILITY SWEEPS TO THE BUILDING TO BE DETERMINED AT TIME OF CONSTRUCTION.
4. ALL EXISTING UTILITY LOCATIONS, INCLUDING WATERLINE SHALL BE VERIFIED IN THE FIELD. CONTRACTOR SHALL CONTACT U.S.A. ALERT FOR UTILITY LOCATIONS PRIOR TO EXCAVATION.
5. ALL CONDUIT ENDS SHALL BE MARKED WITH A 2" X 4" STAKE EXTENDING FROM THE BOTTOM OF THE TRENCH TO A HEIGHT OF 2" ABOVE GRADE. THE STAKE SHALL BE PAINTED GREEN.
6. SAND BEDDING SHALL BE AT THE DISTRICTS DESCRIPTION.
7. EXACT CONDUIT CONFIGURATIONS SHALL BE INSTALLED USING "BEST PRACTICES AND PROCEDURES".
8. COORDINATE WITH BUILDING PLANS FOR BEST LOCATIONS FOR SWEEPS FROM UTILITY TRENCH, AND POINTS OF WATER CONNECTIONS TO BUILDING UNITS.
9. THE PROPOSED WATER LINE CAN BE BURIED DEEPER TO AVOID CONFLICTS WITH OTHER UTILITIES.
10. SEE ARCHITECT'S PLAN FOR INDIVIDUAL POINTS OF CONNECTION TO EACH "PORTABLE UNIT".
11. ANY UNDERGROUND UTILITIES IN PAVED AREAS WITH LESS THAN 18" OF COVER SHALL RECEIVE CONCRETE SLURRY PIPE EMBEDMENT IN ACCORDANCE WITH DETAIL (4).



TYPICAL TRENCH CONFIGURATION

- NOTE:
- G = ELECTRICAL, PRIMARY (3" CONDUIT)
 - T = NATURAL GAS
 - C = CABLE TELEVISION - COORDINATE WITH DISTRICT MAINTENANCE

IDENTIFICATION STAMP
 DIV. OF THE STATE ARCHITECT
 DATE: APR 2 9 2009
 APP03 111734
 AC. M.F.S. 555



JOB NO.: 07-320
 DWG NO.: 07-320GRBM
 DATE: 04/07/08
 DRAWN BY: MAM
 CHECKED BY: MKV
 SHEET 7
 OF 18 SHEETS

SITE GRADING AND IMPROVEMENT PLANS
BCSD-WAYSIDE ELEMENTARY
UTILITY COMPOSITE PLAN
BAKERSFIELD, CALIFORNIA

REGISTERED PROFESSIONAL ENGINEER
 MATTHEW K. VOIVILLA
 RCE 43130
 Exp. 3-31-10
 STATE OF CALIFORNIA

DATE: 4-7-08
 REVISIONS:
 MATTHEW K. VOIVILLA RCE 43130 EXP. 3/31/10

Pinnacle Civil Engineering, Inc.
 2161 Saturn Court, Bakersfield, CA 93308
 Phone: (661) 869-0184 Fax: (661) 377-0076