

SITE GRADING AND IMPROVEMENT PLANS

THE SOUTH 630 FEET OF LOT 44 IN SECTION 6, T.30S, R.28E., M.D.B.M., IN THE CITY OF BAKERSFIELD, COUNTY OF KERN, STATE OF CALIFORNIA, AS SHOWN ON THAT CERTAIN MAP DATED MARCH 16, 1889 AND ENTITLED "KERN COUNTY SALES MAP NO. 1 OF LANDS OF J.B. HAGGIN" MADE BY AND ACCORDING TO THE SURVEYS OF W.R. MACMURDO, COUNTY SURVEYOR OF KERN COUNTY, CALIFORNIA AND RECORDED MAY 3, 1889 IN THE OFFICE OF THE COUNTY RECORDER OF KERN COUNTY.

SHEET NO. INDEX

- 1 COVER SHEET
- 2 NOTES
- 3 EXISTING CONDITIONS
- 4 DETAILS AND TYPICAL SECTIONS
- 5 GRADING SHEET 1 OF 2
- 6 GRADING SHEET 2 OF 2
- 7 UTILITY COMPOSITE PLAN 1 OF 2
- 8 UTILITY COMPOSITE PLAN 2 OF 2
- 9 PLANTING DETAILS
- 10 IRRIGATION DETAILS
- 11 LANDSCAPING SPECIFICATIONS 1 OF 2
- 12 LANDSCAPING SPECIFICATIONS 2 OF 2
- 13 IRRIGATION SPECIFICATIONS 1 OF 2
- 14 IRRIGATION SPECIFICATIONS 2 OF 2
- 15 LANDSCAPING PLAN 1 OF 2
- 16 LANDSCAPING PLAN 2 OF 2
- 17 IRRIGATION PLAN 1 OF 2
- 18 IRRIGATION PLAN 2 OF 2

QUANTITIES:

THE QUANTITIES SHOWN BELOW ARE FOR GRADING PERMITS PURPOSES ONLY, AND SHALL NOT BE USED FOR BIDDING PURPOSES. THE CONTRACTOR SHALL MAKE HIS OWN ESTIMATE OF QUANTITIES FOR BIDDING THIS PROJECT. ALL QUANTITIES WERE CALCULATED BASED ON A 0.20' FEET LOSS DUE TO CLEARING AND GRUBBING OF THE SITE. THE ENGINEER MAKES NO WARRANTY AS TO THE ANTICIPATED SHRINKAGE FACTOR.

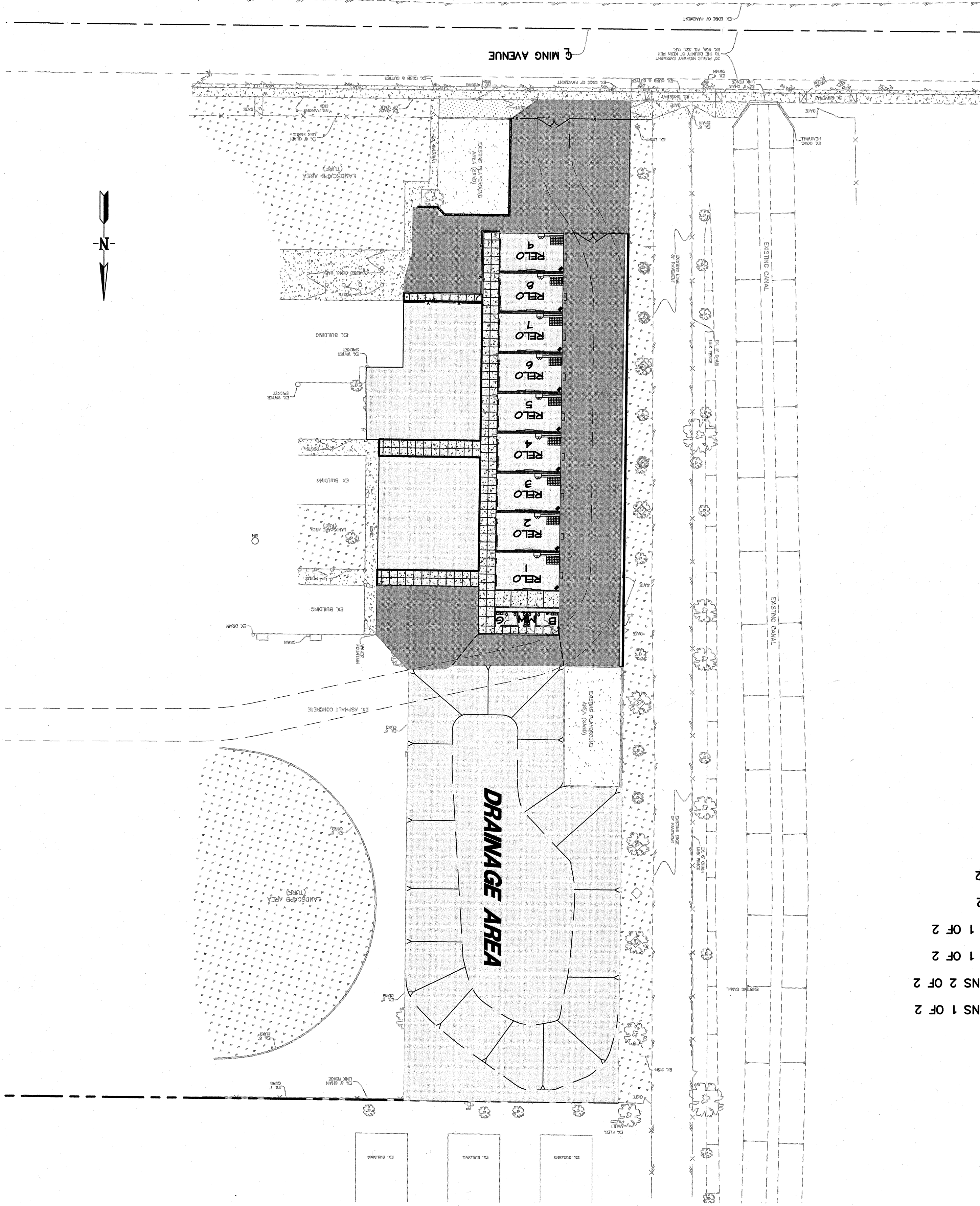
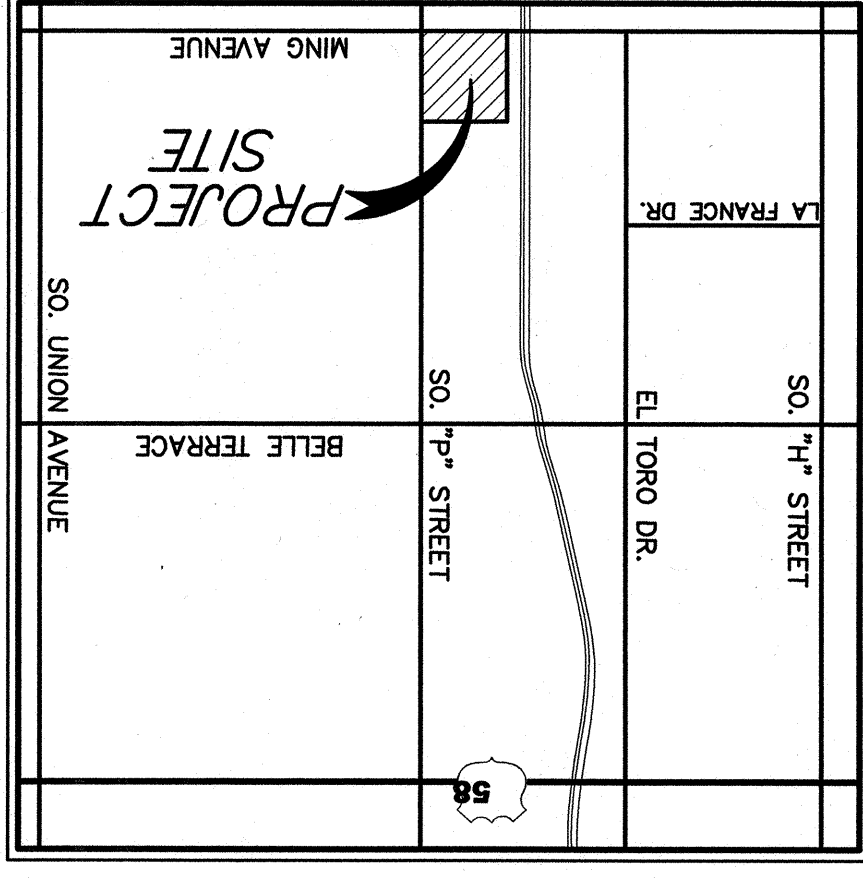
EXCAVATION 350 C.Y. (EXCLUDES SWMP AREA)

FILL 350 C.Y.

COMPACTION FACTOR: 120%

PROJECT ACREAGE - DISTURBED AREA 1.3 AC.

* ALL QUANTITIES ARE "COMPACTED IN-PLACE" VOLUMES.



STATISTICS:

1. ASSESSOR'S PARCEL NUMBER: 011-290-20
2. APPROXIMATE ACREAGE: 8.5 AC
3. BUILDING SIZE: APPROXIMATELY 5216 S.F.
4. WATER: EXISTING ON-SITE WATER (CAL WATER)
5. SEWER DISPOSAL: EXISTING ON-SITE SEWER (C.O.B.)
6. DRAINAGE: ON-SITE
7. EXISTING LAND USE: SCHOOL SITE
8. PROPOSED LAND USE: SCHOOL SITE
9. FIRE PROTECTION: C.O.B.
10. ADDRESS: 1000 MING AVENUE BAKERSFIELD, CA 93307

BENCHMARK USED:
 THE SOUTHWEST CORNER OF THE EXISTING SANDBOX NEAR THE EXISTING DRIVEWAY AT MING AVENUE.
 ELEVATION = 102.35 TOP OF CONCRETE CURB (ASSUMED)



Matthew K. Novilla
 REGISTERED PROFESSIONAL ENGINEER
 STATE OF CALIFORNIA
 RCE 43130 EXP. 3/31/10

SITE GRADING AND IMPROVEMENT PLANS
BCSD-WAYSIDE ELEMENTARY
COVER SHEET
BAKERSFIELD, CALIFORNIA

JOB NO.: 07-320
 DWG NO.: 07-320-GRSM
 DATE: 04/07/08
 DRAWN BY: MAM
 CHECKED BY: MKV
 SHEET 1 OF 18 SHEETS

IDENTIFICATION STAMP
 DIV. OF THE STATE ARCHITECT
 APP03 111734
 DATE APR 29 2008

KEY MAP
 SCALE: 1"=40'

Pinnacle Civil Engineering, Inc.
 2161 Saturn Court, Bakersfield, CA 93308
 Phone: (661) 869-0184 Fax: (661) 377-0076