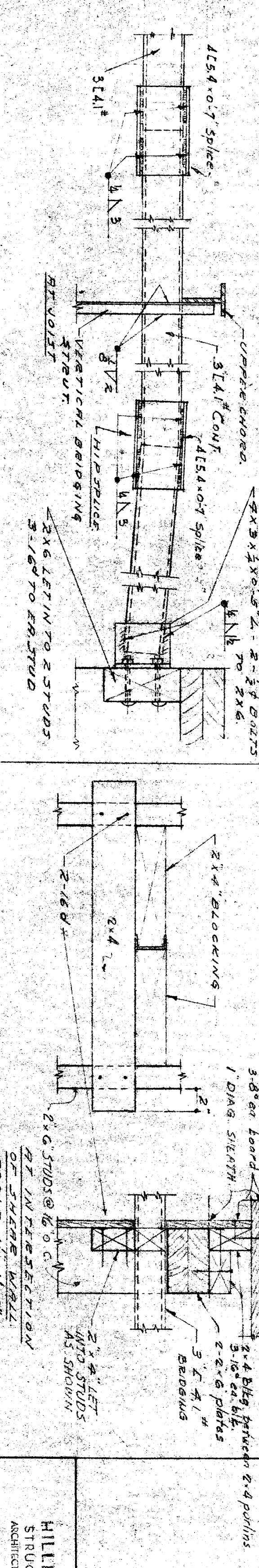
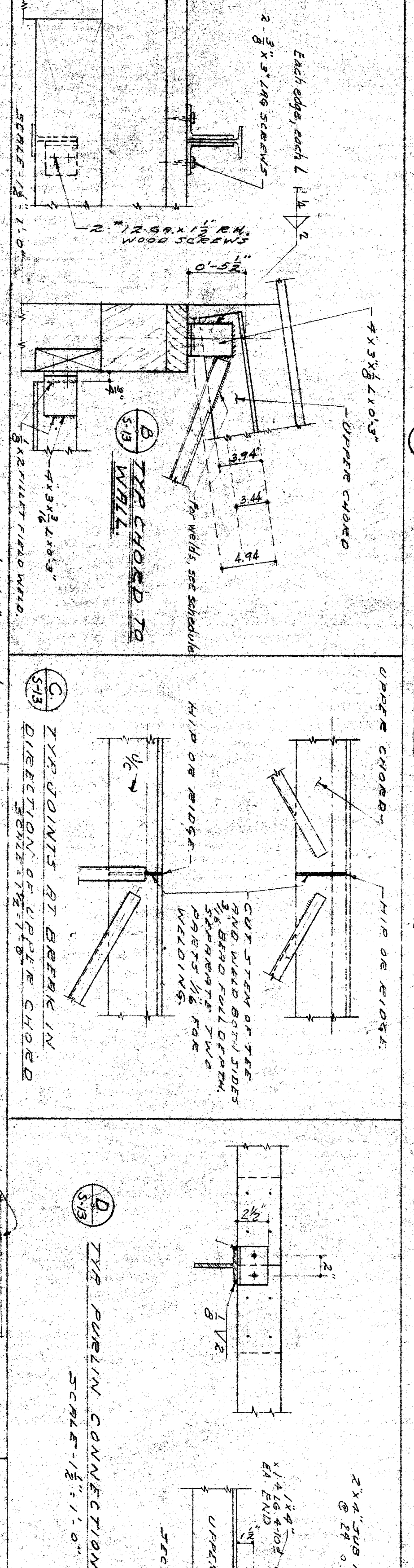
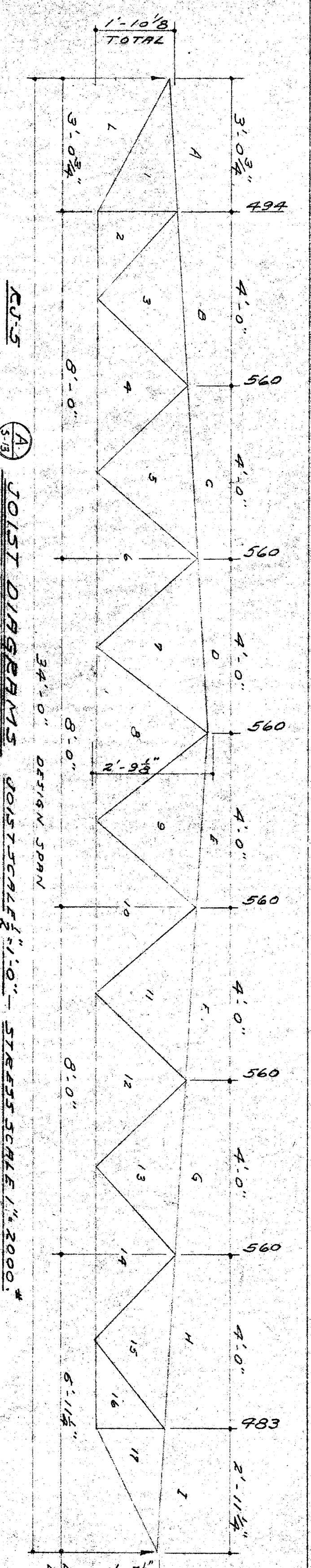
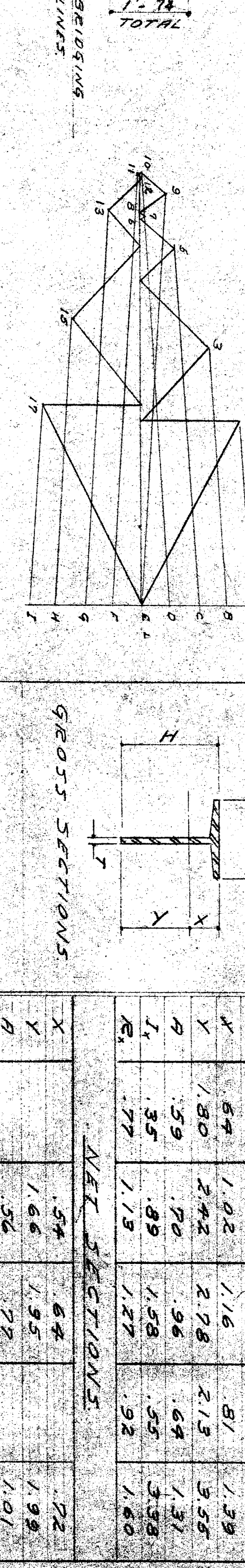


MEMBER	STRESS	SIZE	P/H	L	4/E	W/O	NUMBER	STRESS	SIZE
U.C	9900 C	7/8	14100	98	75		U.C	14340 C	7/8
L.C	4500 T	7/8	15000	15	60		L.C	15140 T	7/8
1-2	2100 C	00	7000	60	4	8 1/2	1-2	4500 T	1/2 x 1 1/8
2-3	1750 T	00	6350	50	2-3	4-5	2-3	2500 C	1/2 x 1 1/8
3-4	1750 T	00	5850	50	1-20	3-4	3-4	2500 C	1/2 x 1 1/8
4-5	600 T	00	2610	52	3	9-5	4-5	1150 T	1/2 x 1 1/8
5-6	500 C	00	1670	52	128	5-6	5-6	1050 C	00
6-7	500 C	00	1170	52	3	6-7	6-7	1260 T	00
7-8	500 T	1 x 1 1/8	1510	52	128	7-8	7-8	1260 T	00
						9-10	9-10	900 C	00

U.C	STRESS	SIZE	P/H	L	4/E	W/O	NUMBER	STRESS	SIZE
U.C	9100 C	7/8	11800	48	62		U.C	9400 C	7/8
L.C	4500 T	7/8	14950	15	60		L.C	15100	7/8
1-2	2100 C	00	7000	60	4	4-1	1-2	4500 T	1/2 x 1 1/8
2-3	1750 T	00	6350	50	2-3	4-1	2-3	2500 C	1/2 x 1 1/8
3-4	1750 T	00	5850	50	3 1/2	3-4	3-4	2500 C	1/2 x 1 1/8
4-5	600 T	00	2610	52	3	4-5	4-5	1150 T	1/2 x 1 1/8
5-6	500 C	00	1670	52	3	5-6	5-6	1050 C	00
6-7	500 C	00	1170	52	3	6-7	6-7	1260 T	00
7-8	500 T	1 x 1 1/8	1510	52	3	7-8	7-8	1260 T	00
						9-10	9-10	900 C	00

U.C	STRESS	SIZE	P/H	L	4/E	W/O	NUMBER	STRESS	SIZE
U.C	12900 C	7/8	12760	48	60		U.C	9400 C	7/8
L.C	15000 T	7/8	15470	15	60		L.C	15100	7/8
1-2	2500 C	1/2 x 1 1/8	9080	57	112	6	1-2	4500 T	1/2 x 1 1/8
2-3	2500 C	1/2 x 1 1/8	8580	50	120	4 1/2	2-3	2500 C	1/2 x 1 1/8
3-4	1500 T	00	7660	50	4	4-1	3-4	2500 C	1/2 x 1 1/8
4-5	1500 T	00	5850	50	3	3-4	4-5	2100 T	1/2 x 1 1/8
5-6	200 C	00	3500	53	132	5	5-6	1600 C	00
6-7	200 C	00	670	53	5	6-7	1900 C	00	
7-8	200 C	00	670	53	140	5	7-8	1900 C	00
8-9	600 C	00	2000	53	140	5	8-9	1900 C	00
9-10	550 T	00	1850	53	3	9-10	4350 T	00	

NOTES - TOTAL LOAD USED IN DESIGN 50 LB/SQ FT SPANNING 4' ON EACH SIDE OF BEARING CEILING. ALL BEARING STRUTS 1/2" x 1/2" x 1/8" FRENCH END.



HILLMAN & NOWELL
STRUCTURAL ENGINEERS
ARCHITECTS BUILDING (2ND FLOOR)
382 S. WASHINGTON ST. ANGELES, CALIF.

STATE OF CALIFORNIA
DEPARTMENT OF PUBLIC WORKS
DIVISION OF ARCHITECTURE
3-17-48

DARKERSFIELD CITY SCHOOLS
BOARD OF EDUCATION
1600 S. ST. PARKERSFIELD, CALIF.

ELEMENTARY SCHOOL
BARKERSFIELD CITY SCHOOL DISTRICT
WAYSIDE ST. ST. PARKERSFIELD, CALIF.

ERNEST T. McCOY, ARCHITECT
108 1/2 ST. ST. CALIFORNIA