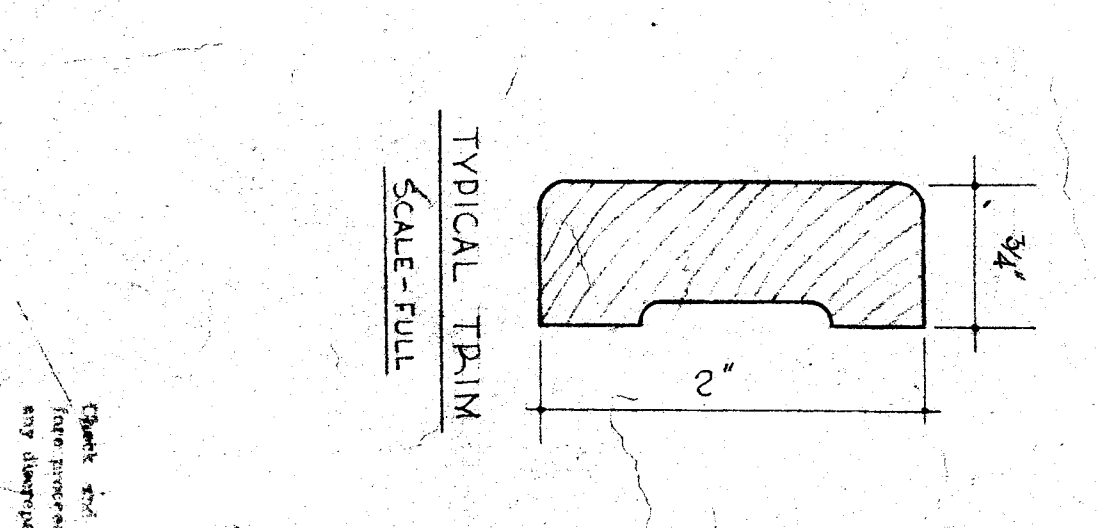
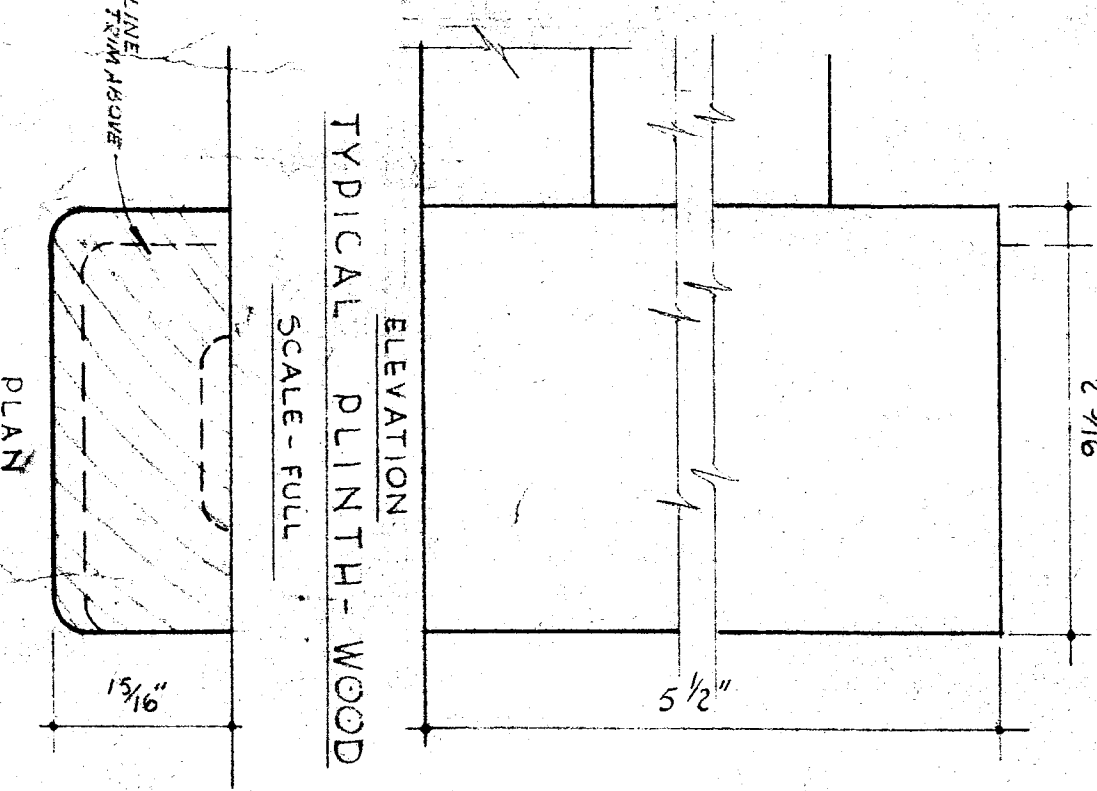
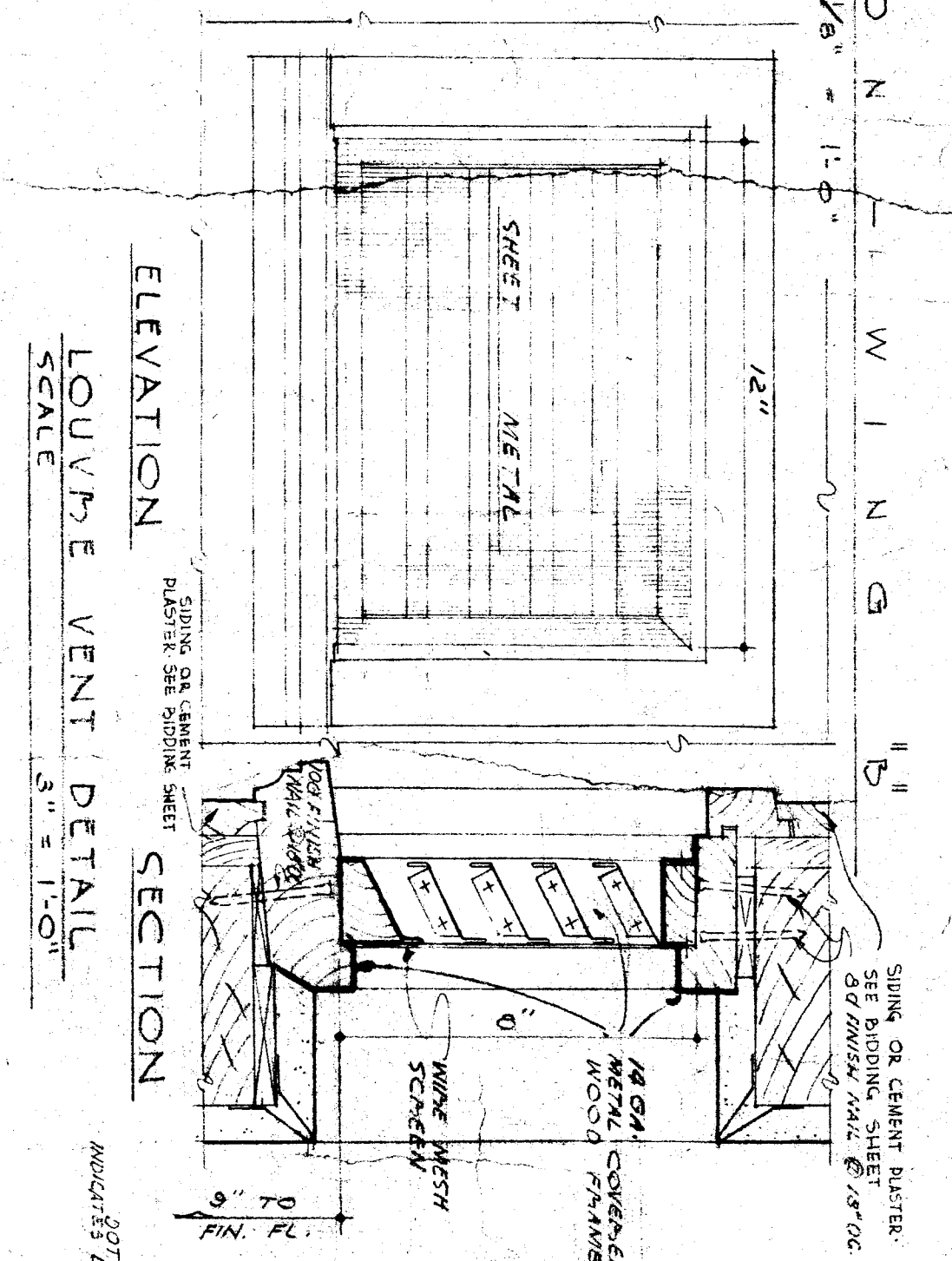
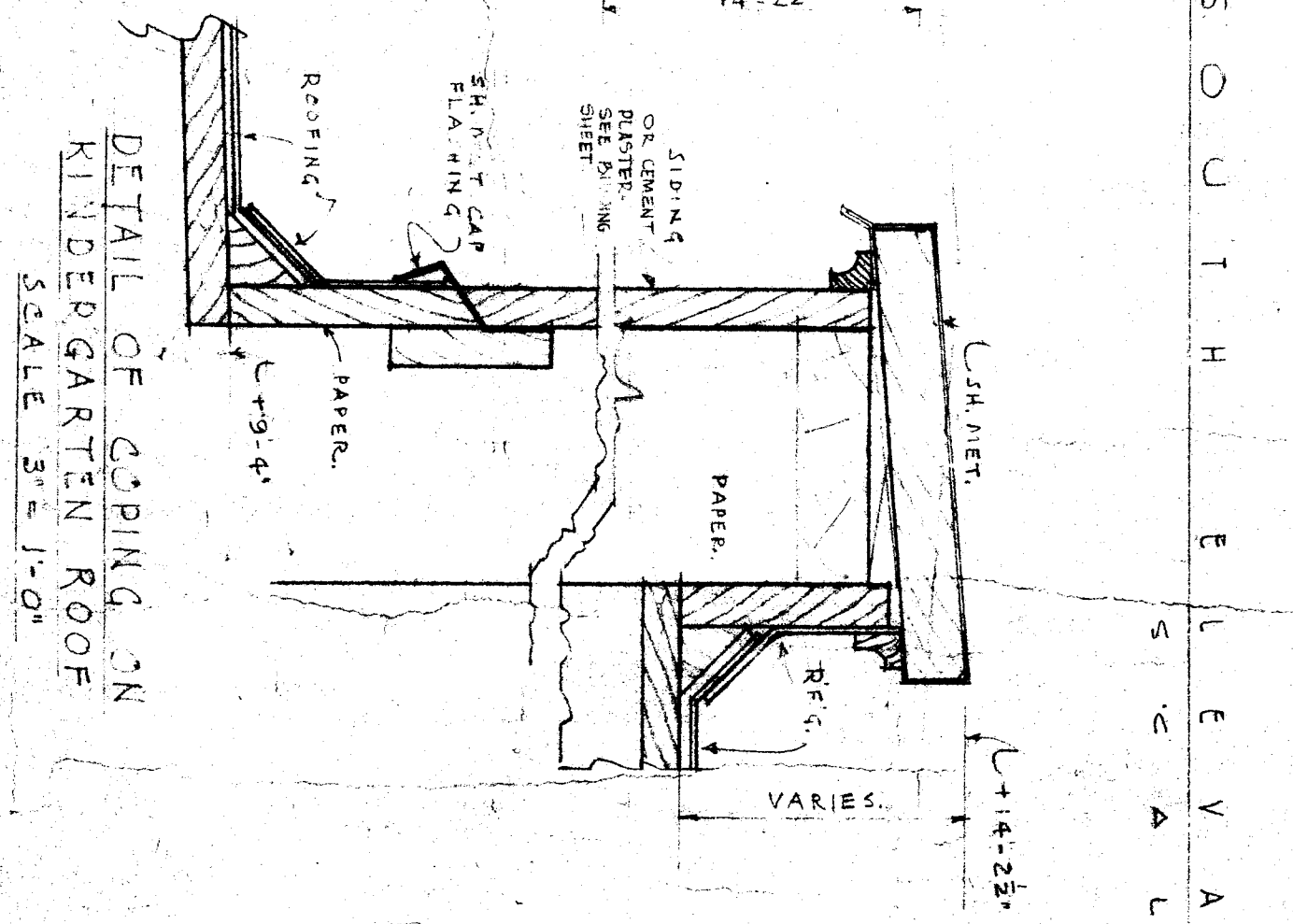
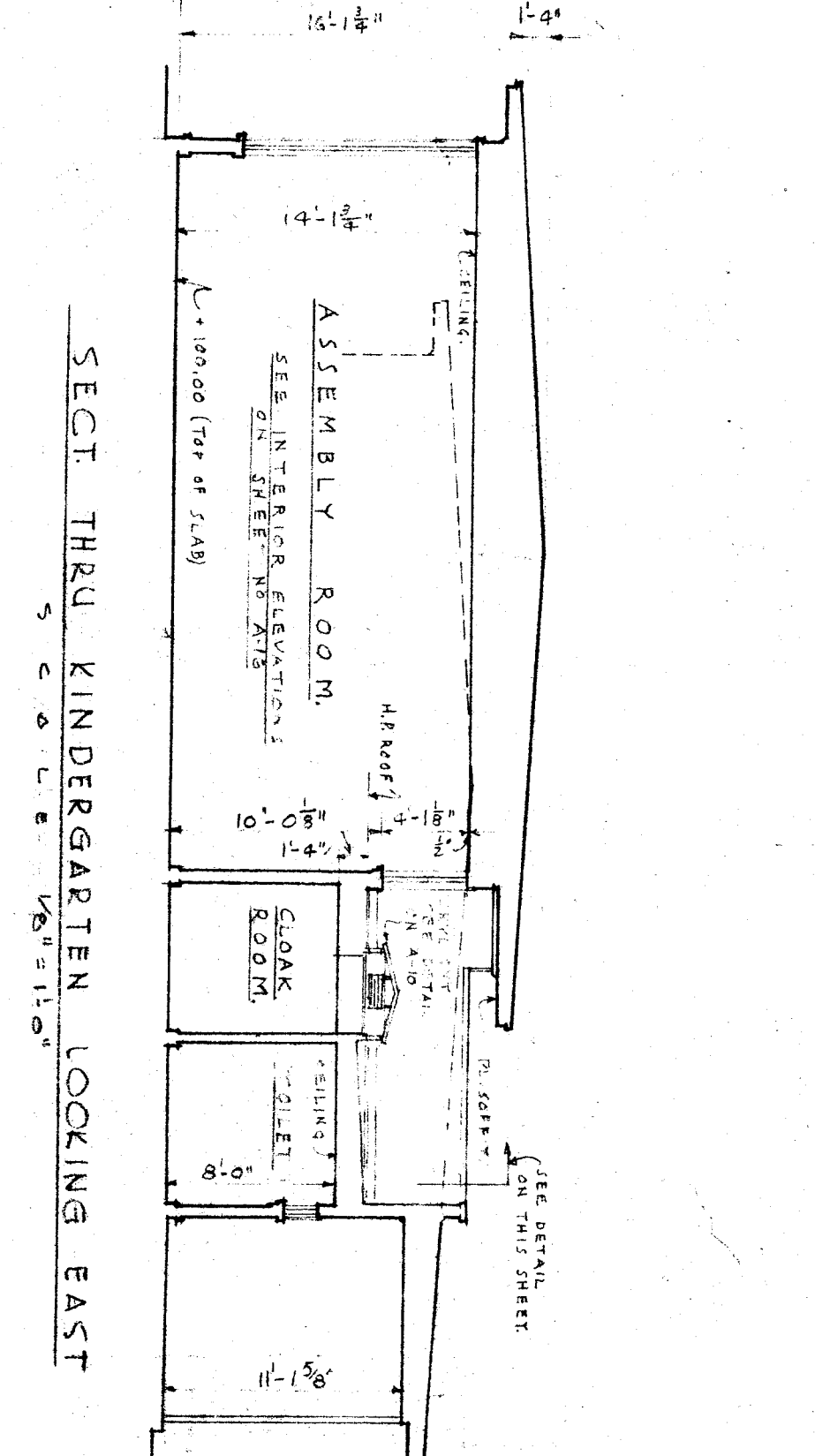
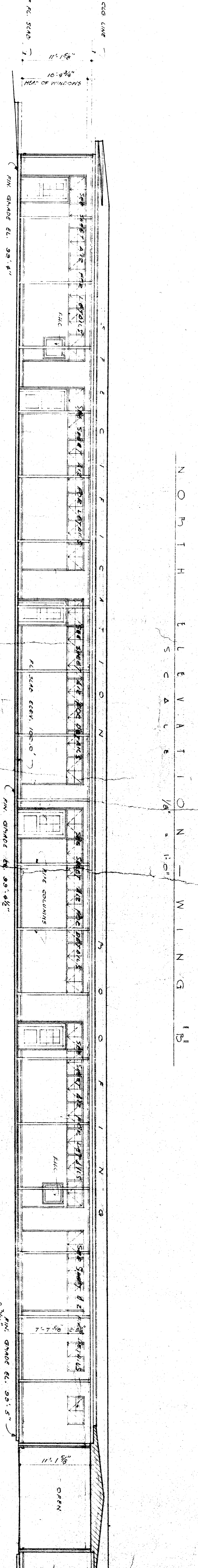
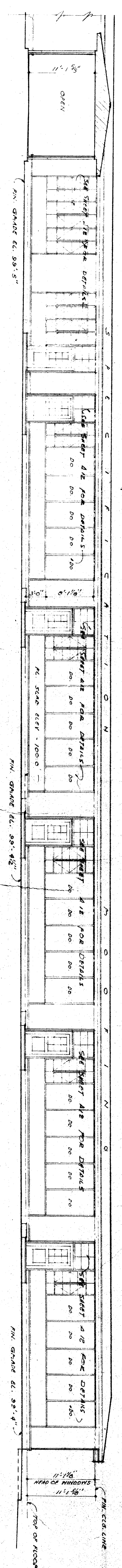


NOTE: EXTERIOR WALL FINISH TO BE GEMENT PLASTER ON 2" RIGID BLD. SEE EXTERIOR SPEC. FOR ALTERNATE END ON EXTERIOR WALL FINISHES.



STATE OF CALIFORNIA
 DEPARTMENT OF PUBLIC WORKS
 DIVISION OF ARCHITECTURE
 56331
 BAKERSTFIELD CITY SCHOOLS
 BAKERSTFIELD-CALIF.
 BOARD OF EDUCATION
 APPROVED: [Signature]
 ARCHITECT: [Signature]