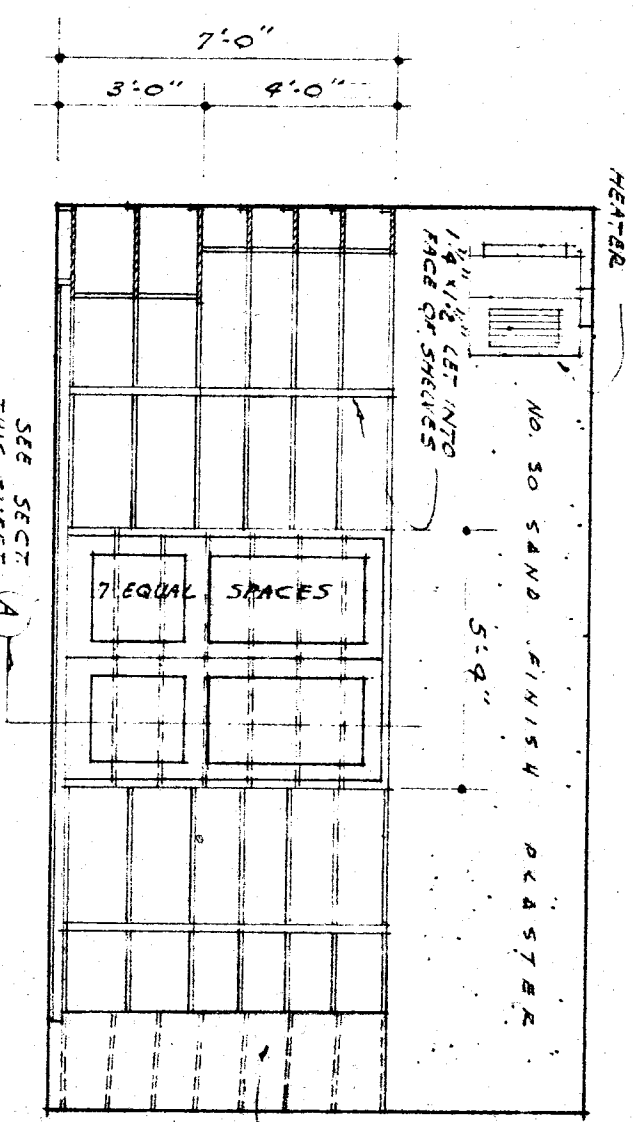
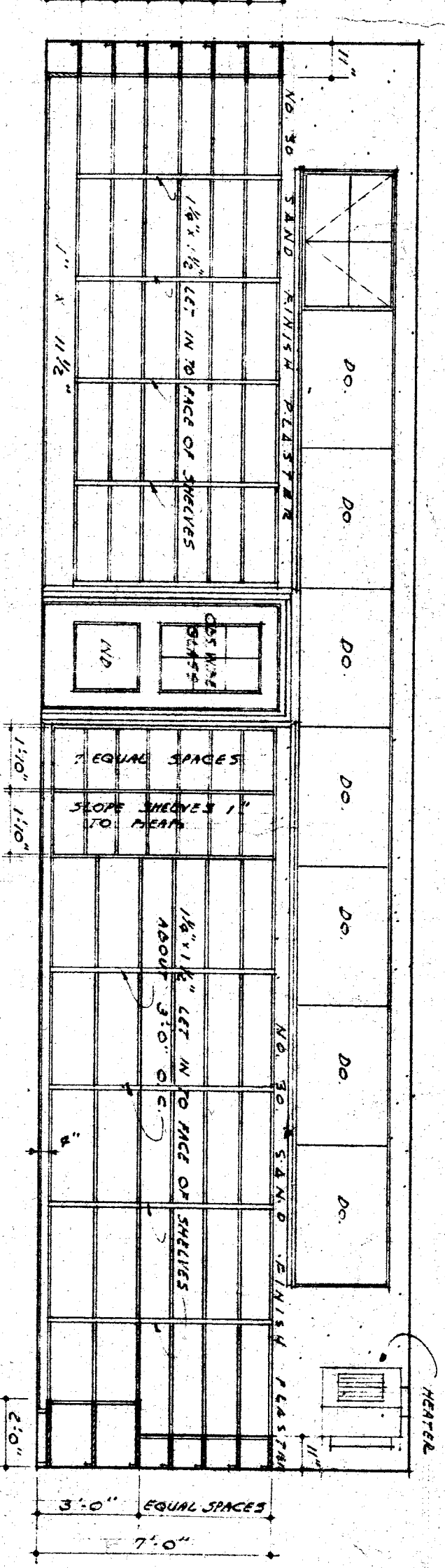


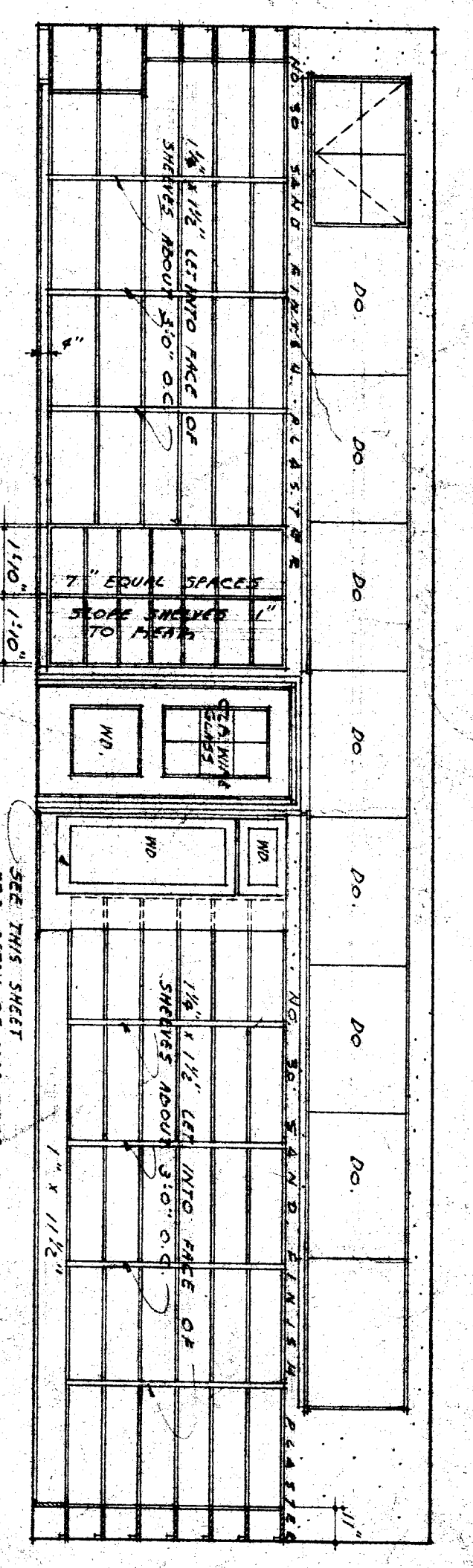
WEST ELEVATION BOOK & SUPPLY ROOM (59)  
SCALE 1/4" = 1'-0"



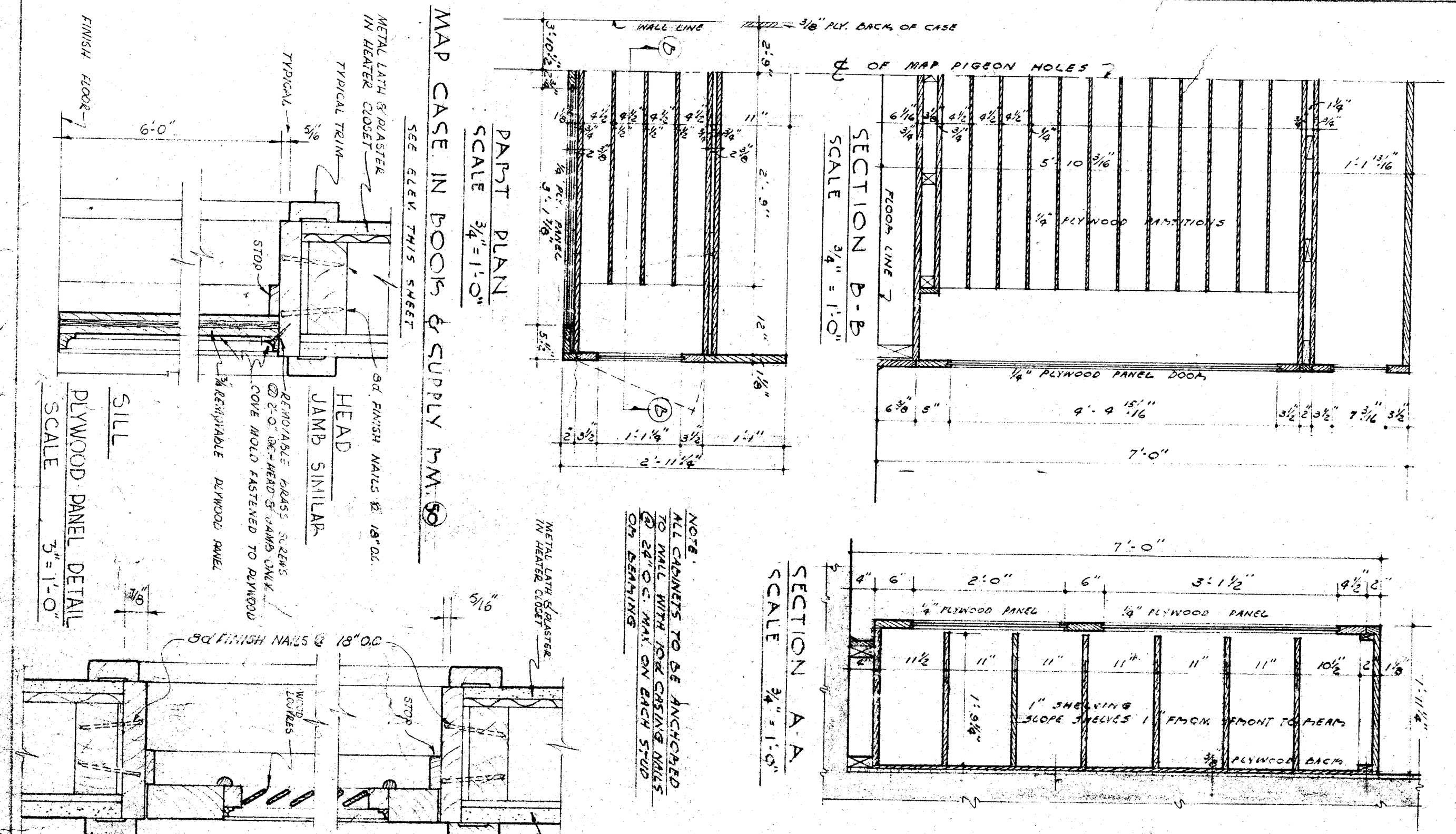
EAST ELEVATION BOOK & SUPPLY ROOM (59)  
SCALE 1/4" = 1'-0"



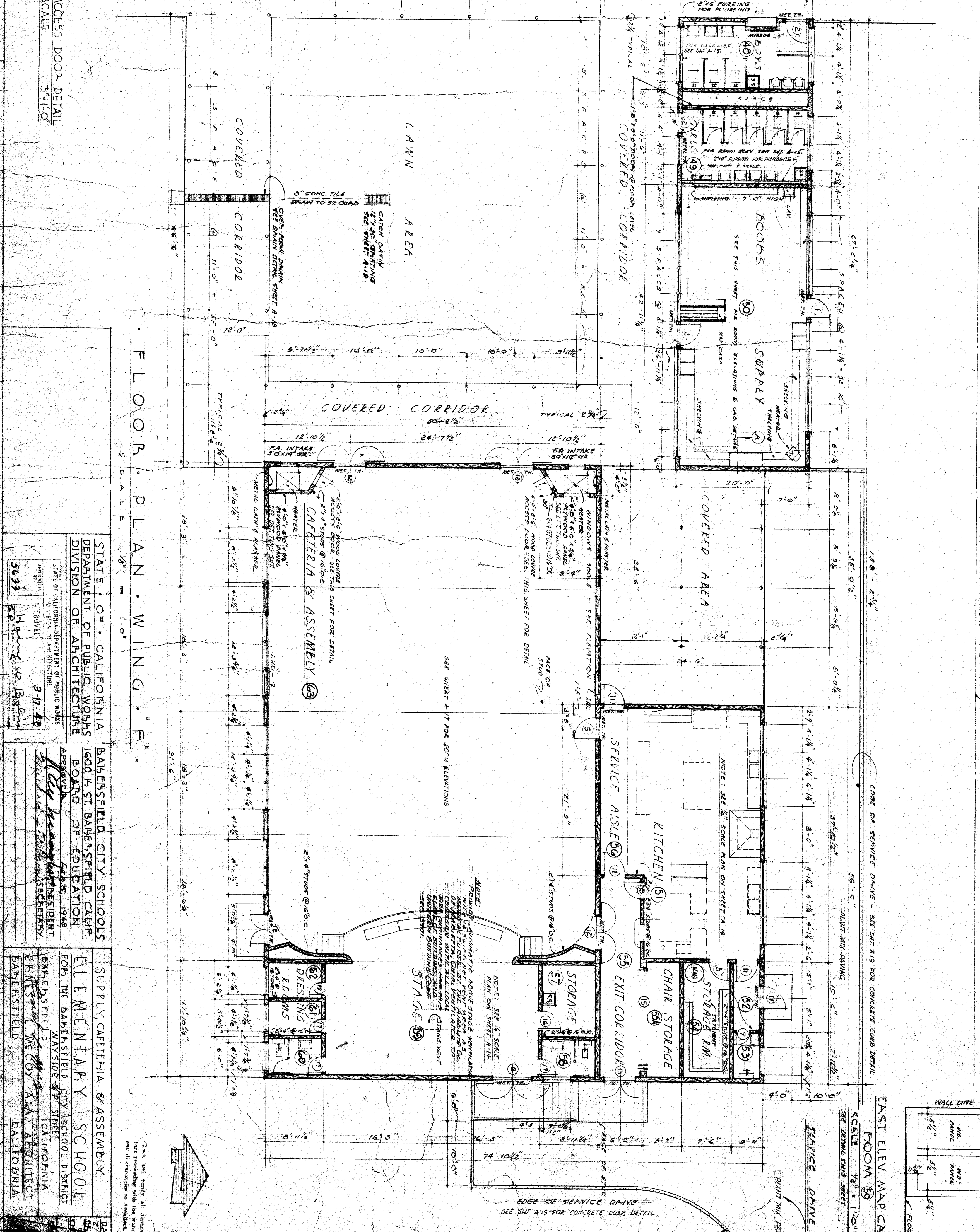
NORTH ELEVATION BOOK & SUPPLY ROOM (59)  
SCALE 1/4" = 1'-0"



SOUTH ELEVATION BOOK & SUPPLY ROOM (59)  
SCALE 1/4" = 1'-0"



SECTION A-A SCALE 3/4" = 1'-0"  
SECTION B-B SCALE 3/4" = 1'-0"  
MAP CASE IN BOOKS & SUPPLY ROOM (59) SCALE 3/4" = 1'-0"  
DIYWOOD PANEL DETAIL SCALE 3/4" = 1'-0"



FLOOR PLAN WING F  
SCALE 1/8" = 1'-0"

STATE OF CALIFORNIA  
DEPARTMENT OF PUBLIC WORKS  
DIVISION OF ARCHITECTURE  
APPROVED FOR THE STATE OF CALIFORNIA  
5693  
Bakersfield, California

BAKERSFIELD CITY SCHOOLS  
1600 1/2 ST. BAKERSFIELD, CALIF.  
BOARD OF EDUCATION  
APPROVED FOR THE BOARD OF EDUCATION  
1948  
L. J. WOODRUFF, PRESIDENT  
W. W. WOODRUFF, SECRETARY

SUPPLY CATERIA & ASSEMBLY  
ELEMENTARY SCHOOL  
FOR THE BAKERSFIELD CITY SCHOOL DISTRICT  
BAKERSFIELD, CALIFORNIA

2-1/2" and 3" vertical dimensions are not to scale.