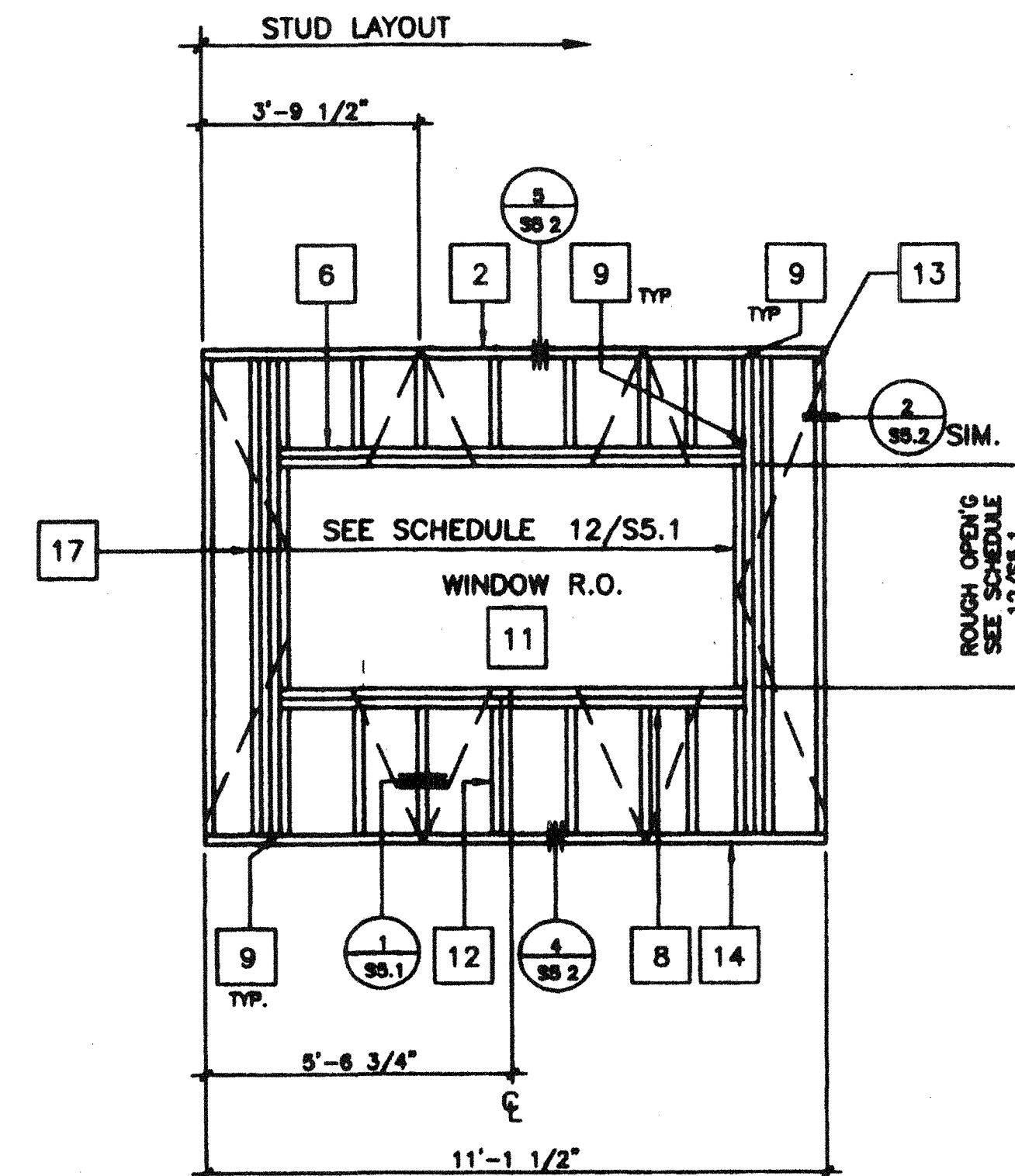
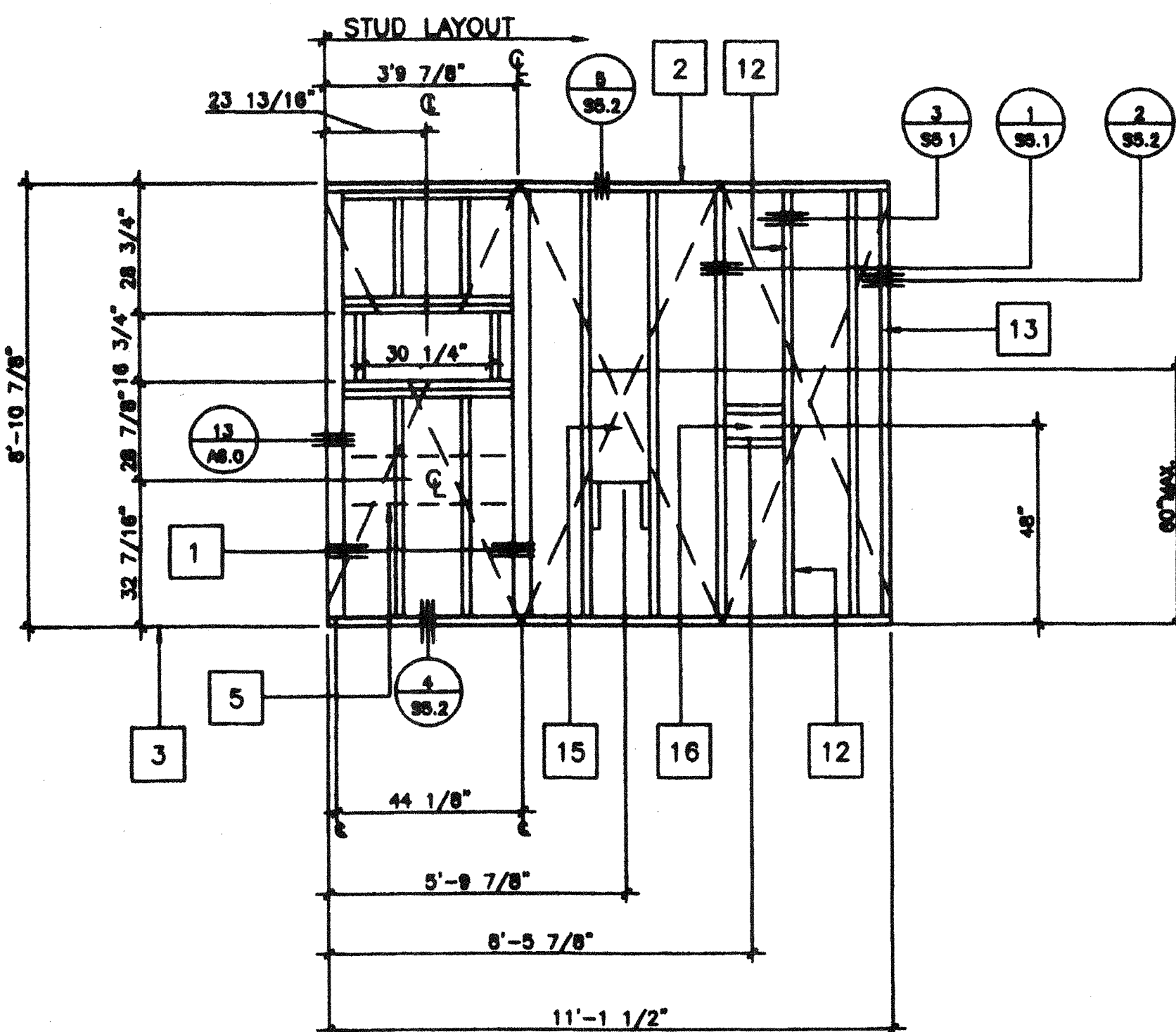


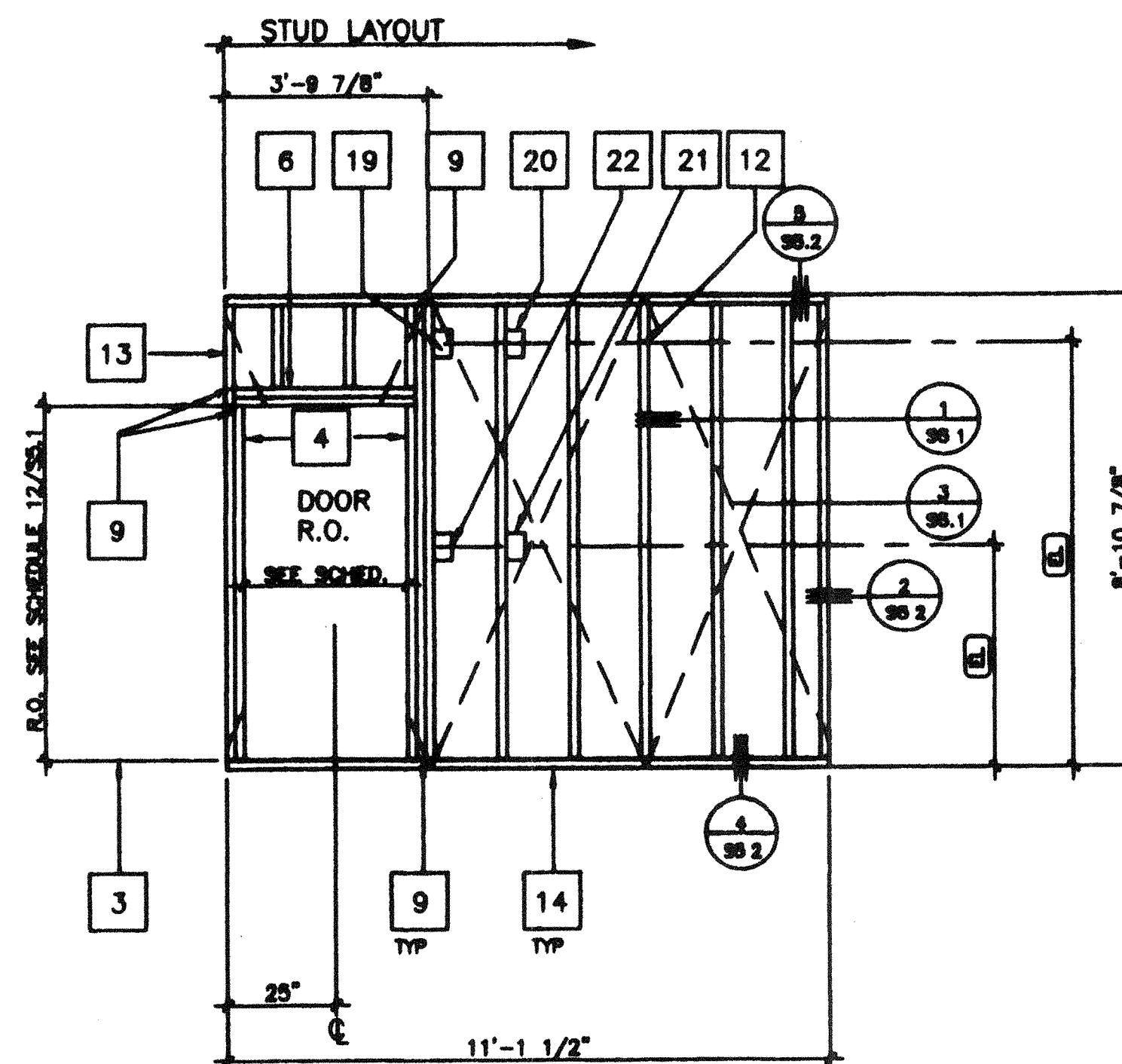
A
A₁ OPPOSITE HAND



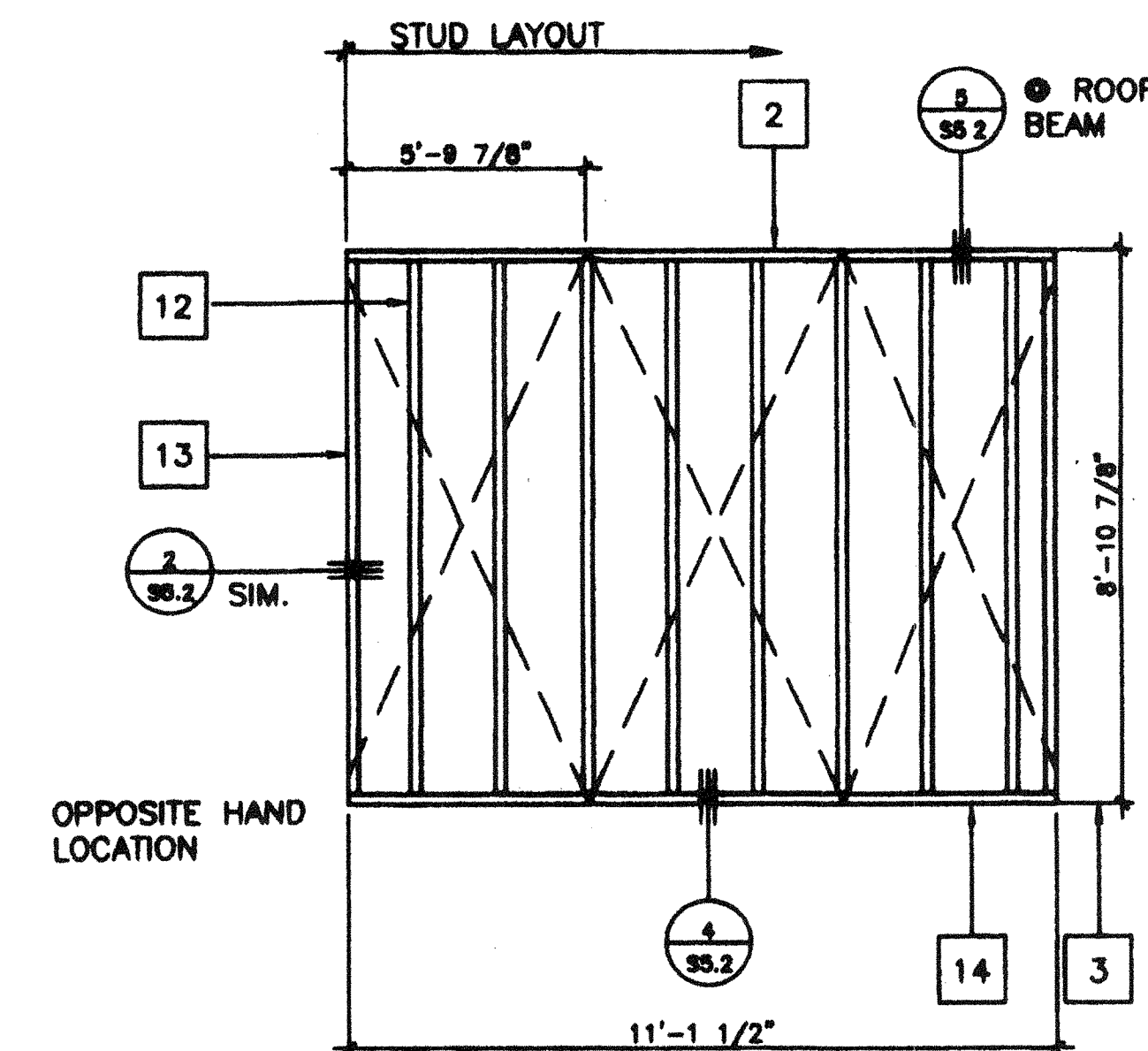
B
B₁ OPPOSITE HAND



C
C₁ OPPOSITE HAND



D
D₁ OPPOSITE HAND



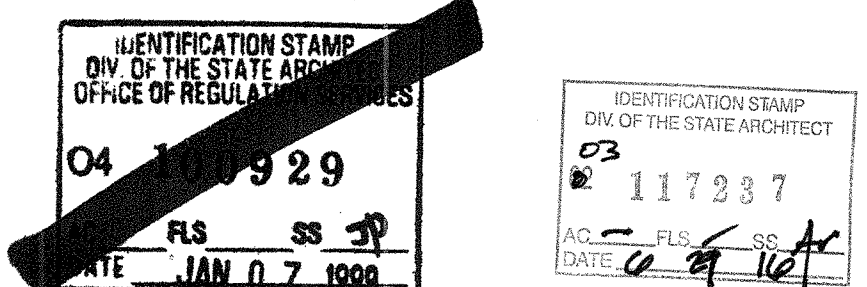
E

SCALE 3/8"=1'

KEY NOTES

- 1 4 X 4 POST
- 2 2X4 TOP PLATE
- 3 FINISH FLOOR
- 4 2X4 FULL HGT KING STUDS AND 2X4 TRIMMER (SEE SCHEDULE FOR QUANTITY SHT S5 1)
- 5 2X6 LET IN FOR AC SUPPORT SEE 15/A6 0
- 6 HEADER (SEE SCHEDULE)
- 7 TYPICAL DUPLEX WALL RECEPTICAL FOR SPECIFIC LOCATION SEE (E)
- 8 WINDOW SILL PLATE (SEE SCHEDULE)
- 9 A 34 CLIPS @ HEADER & SILL TO FULL HGT STUDS AND FULL HGT. STUDS TO TOP AND BOTTOM PLATES
- 10 REQUIRED OPENING FOR A 3068 DOOR (SEE DETAIL 7/S5 1)
- 11 REQUIRED OPENING FOR A 8040 WINDOW (SEE DETAIL 6/S5 1)
- 12 2X4 STUD @ 16" O C TYPICAL
- 13 2X4 NAILER TYPICAL @ EACH END
- 14 2X4 SILL PLATE
- 15 FRAME FOR ELECTRICAL PANEL
- 16 THERMOSTAT LOCATION 4S BOX
- 17 FULL HGT. STUDS AND 1-2X4 TRIMMER (SEE WINDOW SCHEDULE FOR JAMB STUDS REQUIRED SHT. S5 1)
- 18 CLOCK OUTLET (E)
- 19 "J" BOX FOR EXTERIOR LIGHT FIXTURE (TO EXTERIOR) (E)
- 20 "J" BOX FOR FIRE HORN (TO EXTERIOR) (E)
- 21 "J" BOX FOR FIRE PULL STATION (TO INTERIOR) (E)
- 22 LIGHT SWITCH BOX (E)

NOTES



REVISED

NO.	REVISIONS

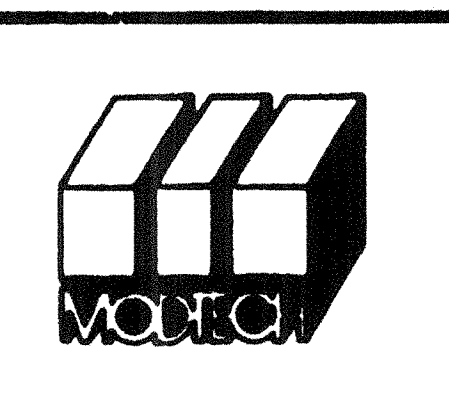
Electrical Engineer's Seal

Mechanical Engineer's Seal

Structural Engineer's Seal

Architect's Seal

Division of the State Architect



MODTECH INC.
 2830 BARRETT AVENUE
 PERRIS, CALIF. 92572
 PH (909) 943-4014
 FAX (909) 940-0427

PROJECT NUMBER: 29 86
WALL FRAMING

© MODTECH, INC 1997
 drawn by 4012-088
 checked by 05 JAN 99
 project no. S5.0

STKP-42
 1/28/98
 2986
S5.0