

**ELECTRICAL PANEL SCHEDULE**

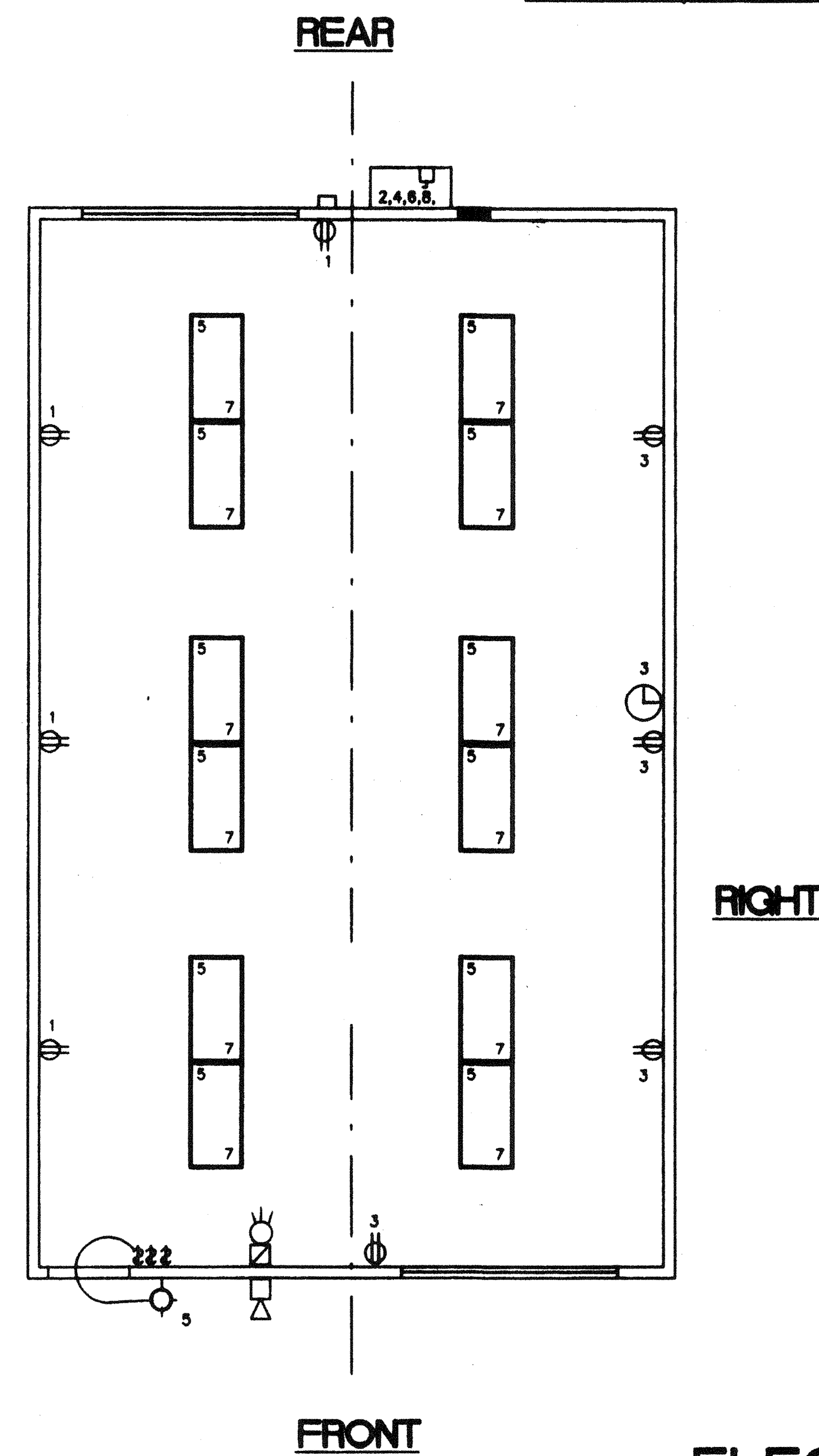
LOAD	WATTS		BREAKER		PANEL LOCATION		FEED		MOUNTING		LOAD
	A <sup>1</sup>	B <sup>2</sup>	Amps	P	A	B	A	B	FLUSH		
RECEPTACLE (4)	720		20	1	1		2	2	60	3060	HVAC 3.5 (τ)
RECEPTACLE / CLOCK (5)	900		20	1	3		4	-	-	3360	HVAC 3.5 (τ)
INT. / EXT. LIGHTS (25)	900		20	1	5		6	2	30	2500	HVAC (HS)
INTERIOR LIGHTS (24)	840		20	1	7		8			2500	HVAC (HS)
FA (DEDICATED)	40		-	-	9		10				
					11		12				
WATTS/PHASE		A = 7,520		1600		1740		5060		B = 7,600	
TOTAL		18,555 WATTS		65 AMPS		120/240 VOLTS		SINGLE φ		THREE WIRE	
NCL =		13300 W									

**GENERAL GROUNDING NOTES**

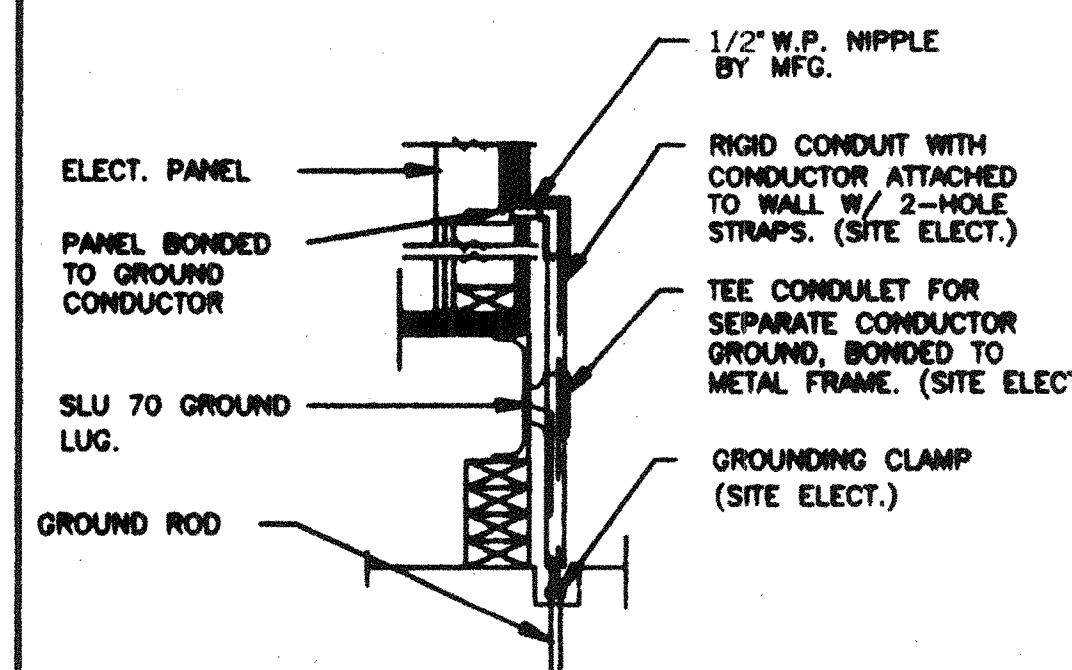
- EACH BUILDING SHALL BE SEPARATELY GROUNDING WITH A 3/4" RD. X 8' COPPERCLAD STEEL GROUND ROD. WHERE ROCK BOTTOM IS ENCOUNTERED, ROD SHALL BE DRIVEN AT AN ANGLE NOT TO EXCEED 45 DEGREE'S FROM THE VERTICAL OR SHALL BE BURIED IN A TRENCH THAT IS AT LEAST 30" DEEP. (BY SITE ELECTRICAL)
- TESTING: TEST FOR RESISTANCE TO GROUND. IF RESISTANCE EXCEEDS 25 OHMS, INSTALL ADDITIONAL GROUND RODS SEPARATED AT LEAST 6'-0" UNTIL RESISTANCE IS REDUCED TO 25 OHMS OR LESS. (BY SITE ELECTRICAL)
- PROVIDE EQUIPMENT ANCHORAGE PER TITLE 24, TABLE 18 J, PART B.
- APPROVAL OF THIS PLAN DOES NOT CONSTITUTE APPROVAL OF THIS FIRE ALARM FOR ALL SITES. THE FIRE ALARM SYSTEM AND/OR COMPONENTS MAYBE REQUIRED TO BE CHANGED DUE TO SITE LOCATION, EXISTING CONDITIONS OR INCOMPATIBLE COMPONENTS.
- GROUND MO TEST SHALL BE DONE IN THE PRESENCE OF THE PROJECT INSPECTOR. ALL GROUNDING SHALL BE IN ACCORDANCE WITH C.E.C. ARTICLE 250.

**ELECTRICAL LEGEND**

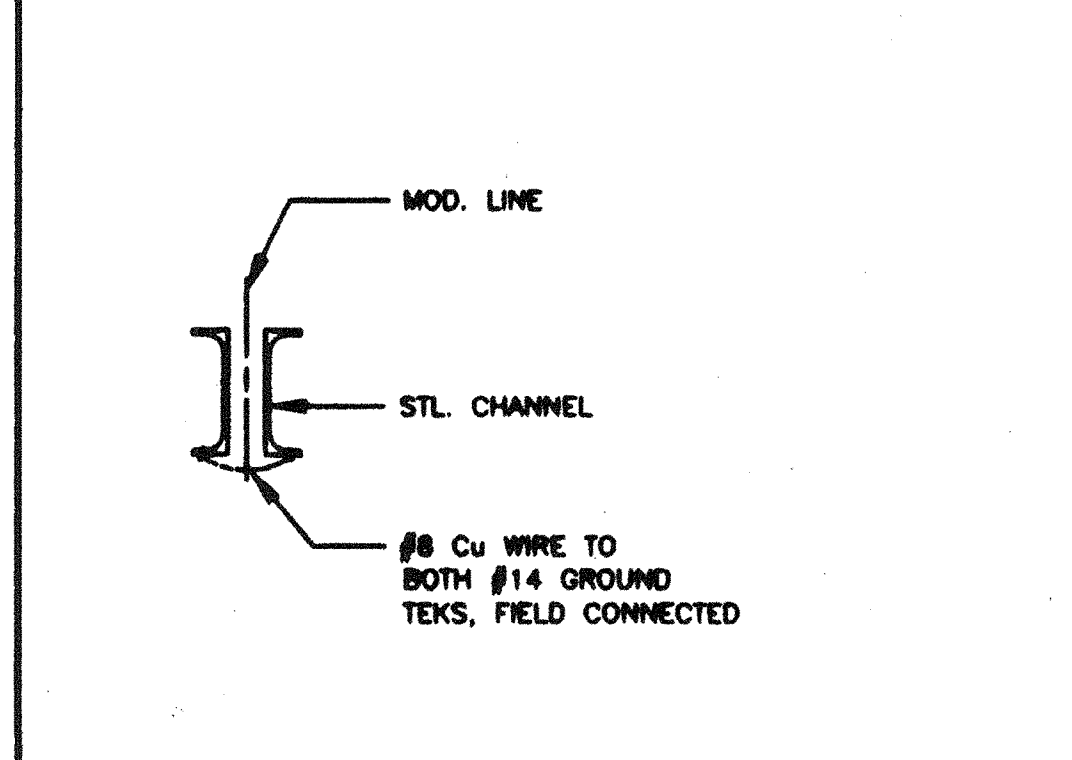
- 2'x4' 4 TUBE FLUORESCENT LIGHT FIXTURE
- ⊕ EXTERIOR LIGHT FIXTURE AT +96" AFF
- ⊕ DUPLEX WALL RECEPTACLE 15-A 125-V 3-WIRE AT +18" AFF U.N.O.
- ⊕ HVAC UNIT (HV)
- ⊕ 4s 'J' BOX FOR INT. FA PULL BOX. +48" AFF 3/4" CO TO ⊕ PULLSTRING.
- ⊕ 4s 'J' BOX FOR EXT. HORN/BELL. +96" AFF 3/4" CO TO ⊕ PULLSTRING.
- ⊕ (6x6x4) WEATHER PROOF GUTTER BOX + 18" AFF 3/4" CO TO ⊕ PULLSTRING.
- ⊕ ELECTRICAL PANEL. + 60" AFF (C), 1 1/2" POWER NIPPLE FOR GROUND JUMPER BY SITE ELEC.
- ⊕ SWITCH +48" A.F.F.
- ⊕ CLOCK. +96" AFF
- ⊕ 4s 'J' BOX FOR INT. FA STROBE AT +80" AFF. 3/4" CO TO ⊕ PULLSTRING.



**ELECTRICAL PLAN (24' X 40')**



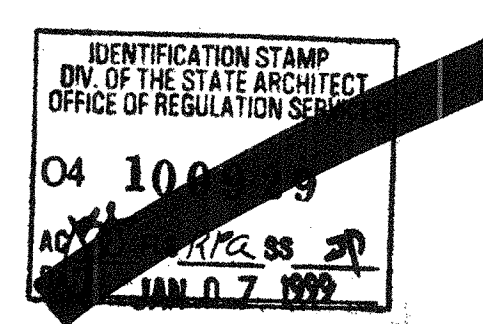
**TYP GROUNDING DETAIL 1**



**GROUND JUMPER • MOD LINE 2**

**NOTES**

- SCHOOL EQUIPMENT ANCHORAGE  
THE FOLLOWING IS FOR THE ARCHITECTS INFORMATION ONLY:  
THE SEISMIC ANCHORAGE OF ELECTRICAL EQUIPMENT SHALL CONFORM TO C.C.R. TITLE 24, SECTION 18004.2 AND TABLE 18004.2 ANCHORAGE DETAILS FOR ROOF/FLOOR MOUNTED EQUIP. WEIGHING LESS THAN 400 LBS. & HEAVY EQUIPMENT WEIGHING LESS THAN 20 LBS. MAY BE OMITTED FROM THE PLANS.  
FOR ELECTRICAL DRAWINGS:  
ALL ELECTRICAL EQUIPMENT SHALL BE BRACED OR ANCHORED TO RESIST A HORIZONTAL FORCE ACTING IN ANY DIRECTION USING THE FOLLOWING CRITERIA:  
EQUIPMENT ON GRADE 20% OF OPERATING WEIGHT  
EQUIPMENT ON STRUCTURE 30% OF OPERATING WEIGHT  
FOR FLEXIBLY MOUNTED EQUIPMENT USE 4 X THE ABOVE VALUES, AND FOR SIMULTANEOUS VERTICAL FORCE USE 1/3 X THE HORIZONTAL FORCE.  
THE ABOVE VALUES ARE FOR AN IMPORTANCE FACTOR, I = 1.0 AND SEISMIC ZONE, Z = 0.4.  
WHERE ANCHORAGE DETAILS ARE NOT SHOWN ON THE DRAWINGS THE FIELD INSTALLATION SHALL BE SUBJECT TO THE APPROVAL OF THE ARCHITECT AND THE FIELD ENGINEER OF THE OFFICE OF THE STATE ARCHITECT.



**STKP-42** 1/24/98

**REVISIONS**


Electrical Engineer's Seal

Mechanical Engineer's Seal

Structural Engineer's Seal

Architects Seal

Division of the State Architect  
IDENTIFICATION STAMP  
DIV. OF THE STATE ARCHITECT  
OFFICE OF REGULATION SERVICES  
**PC-266**  
AC: [Signature]  
DATE: JAN 23 1999

**MODTECH INC.**  
2830 BARRETT AVENUE  
PERRIS, CALIF. 92572  
PH (909) 943-4014  
FAX (909) 940-0427

PROJECT NUMBER: 2986  
© MODTECH, INC. 1997  
117987  
DATE: 6/29/98

drawn by: FWH  
date: 11/98  
checked by: 4012-088  
date: 05 JAN 99  
**E1.0**

PROJECT NO. 2377, 3022, 3183  
PC-266 2506 2986