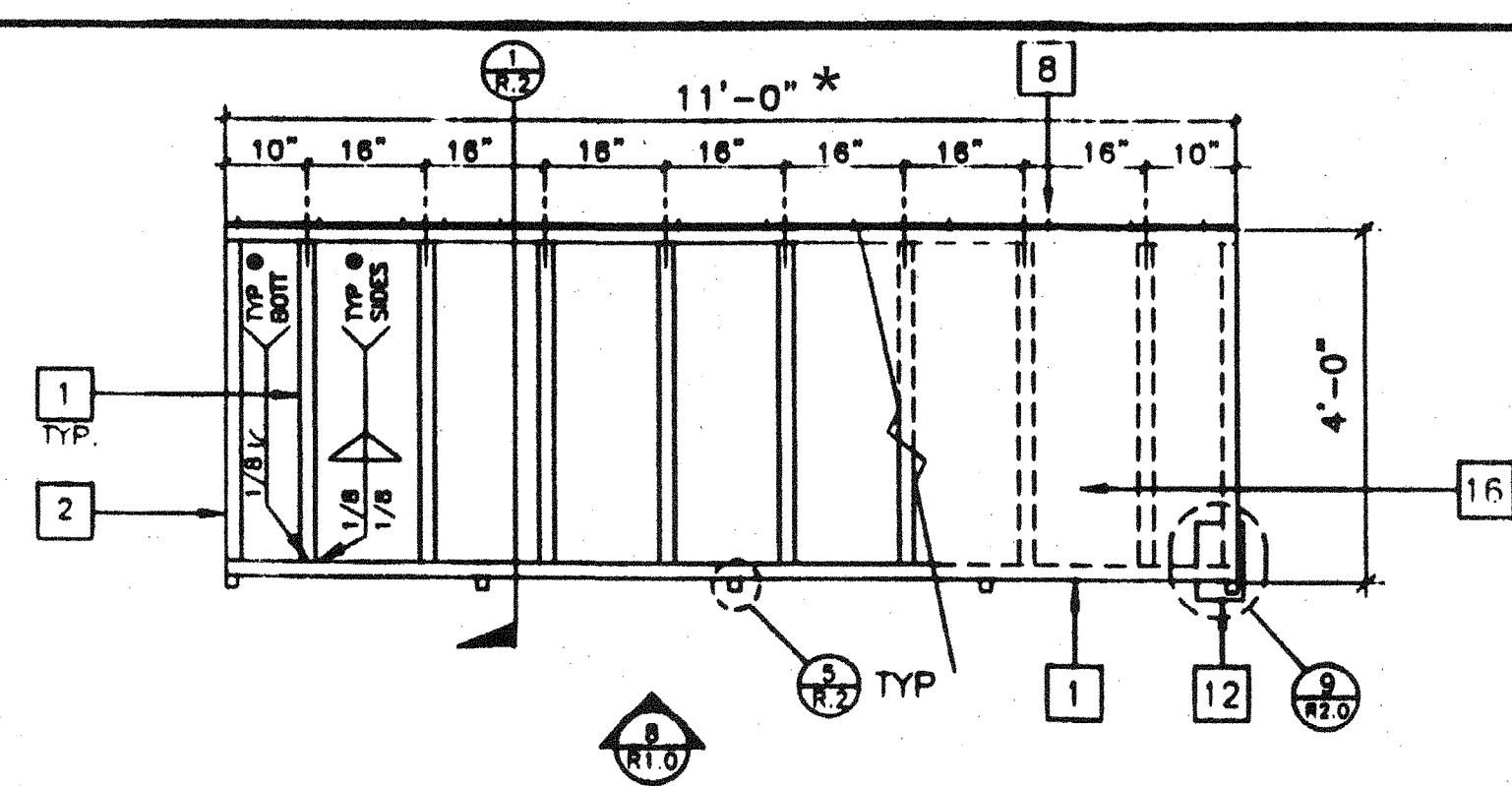


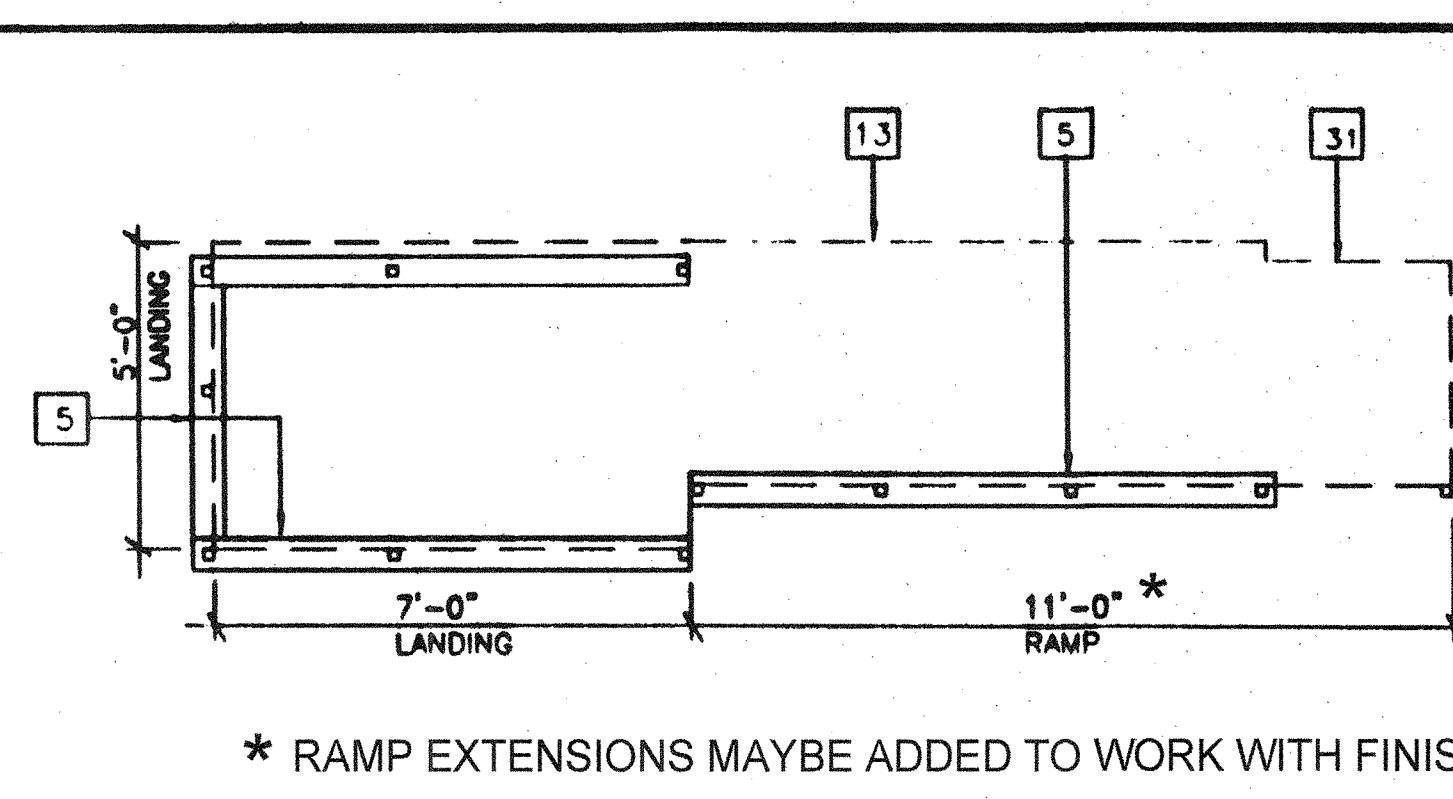
LANDING FRAME

12



RAMP FRAME

7

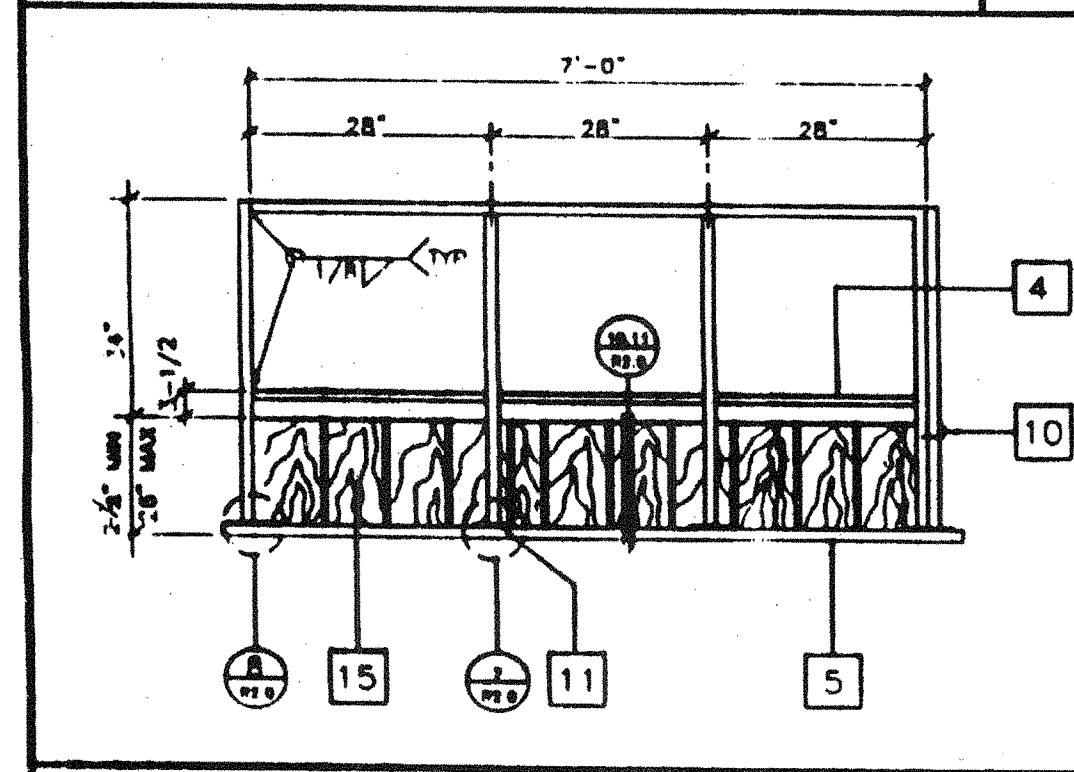


SILL PLAN FOR RAMP AND LANDING

3/8" 1

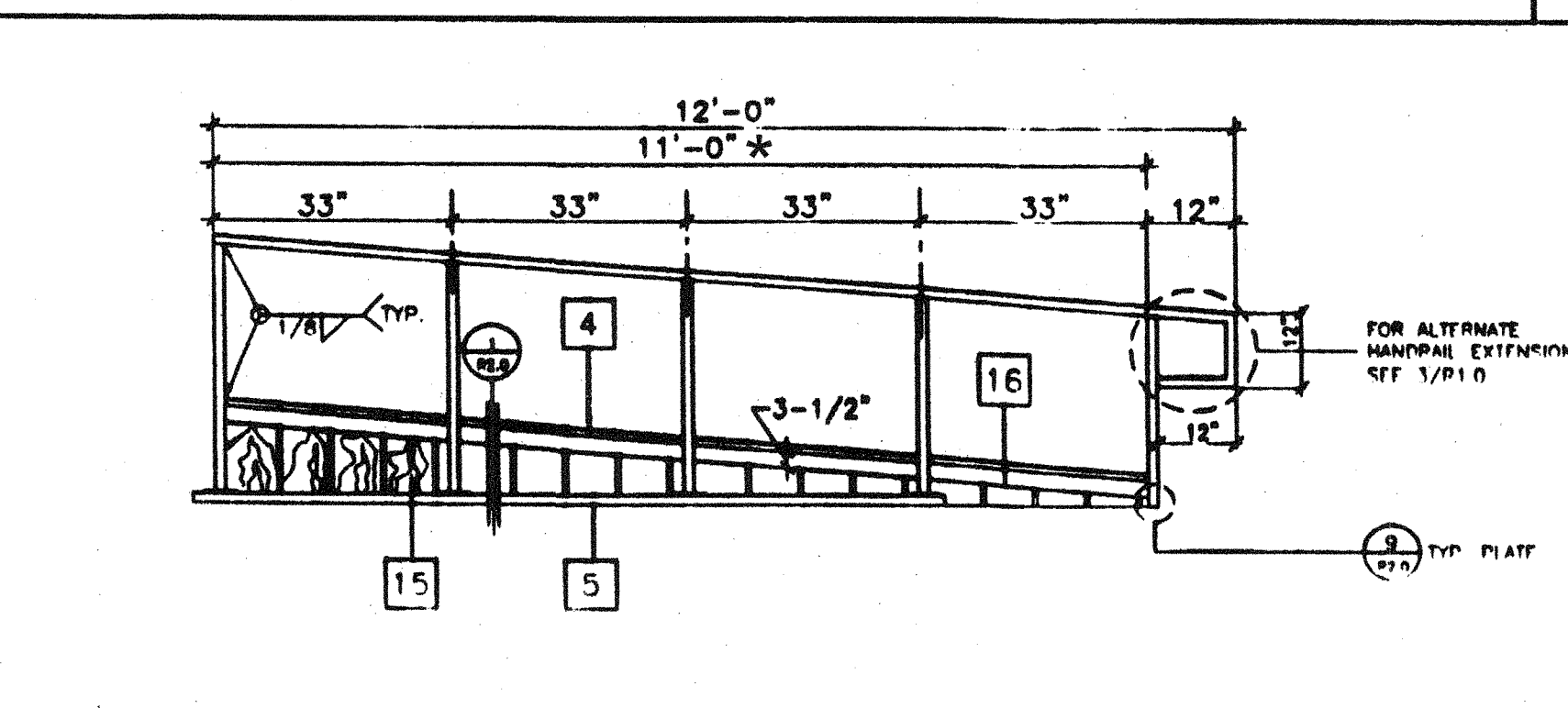
KEY NOTES

- 1 TS 2" x 2" x 14ga
- 2 TS 1 1/2" x 1 1/2" x 14ga (Fy = 39ksi)
- 4 TS 1" x 1" x 16ga WHEELCHAIR GUIDE
- 5 2 x 6 PT SILL PLATE
- 8 8" x 10ga CONT. PLATE W/ 1/4" x 2" TEK SCREWS @ 9" OC INTO WOOD OR FOUND. BLOCKS OR #14 x 2" TEK SCREWS INTO STEEL @ 9" OC
- 9 6" x 12" x 10ga PLATE W/ 2-1/4" x 3" LACS TO STRUCTURAL FRAME OF BUILDING
- 10 3" x 1" x 3'-0" x 10ga BENT PLATE
- 11 2" x 4" x 12ga BASE PLATE W/ 2-1/4" x 1" LACS
- 12 6" x 10" x 12ga BASE PLATE @ RAMP TOE
- 13 LINE OF RAMP/LANDING ABOVE
- 14 LOWER LANDING BY DISTRICT
- 15 SKIRTING: PLYWOOD TO MATCH BUILDING SIDING. FLOCK ALL EDGES. ATTACH W/ 8d @ 6" OC EDGES AND 12" OC FIELD. AT EDGE CONNECTION TO T.S. USE #14 x 2" TEK SCREWS @ 9" OC
- 16 12ga METAL DECK: NON-SLIP SURFACE. DESIGN COEFFICIENT OF FRICTION GREATER THAN 0.8. MAINTAINABLE FOR 1 YR RAMP EXTENSION FRAME.
- 17 EXISTING BUILDING.
- 18 RAMP BY MODTECH
- 27 FLUSH TRANSITION
- 28 NOTCH BOTTOM PLATE (MUD SILL) AS REQUIRED TO CLEAR RAMP TOE. MAX NOTCH 1 1/2" x 4'-0" LONG.
- 31 TS 1" x 1" x 18ga
- 35



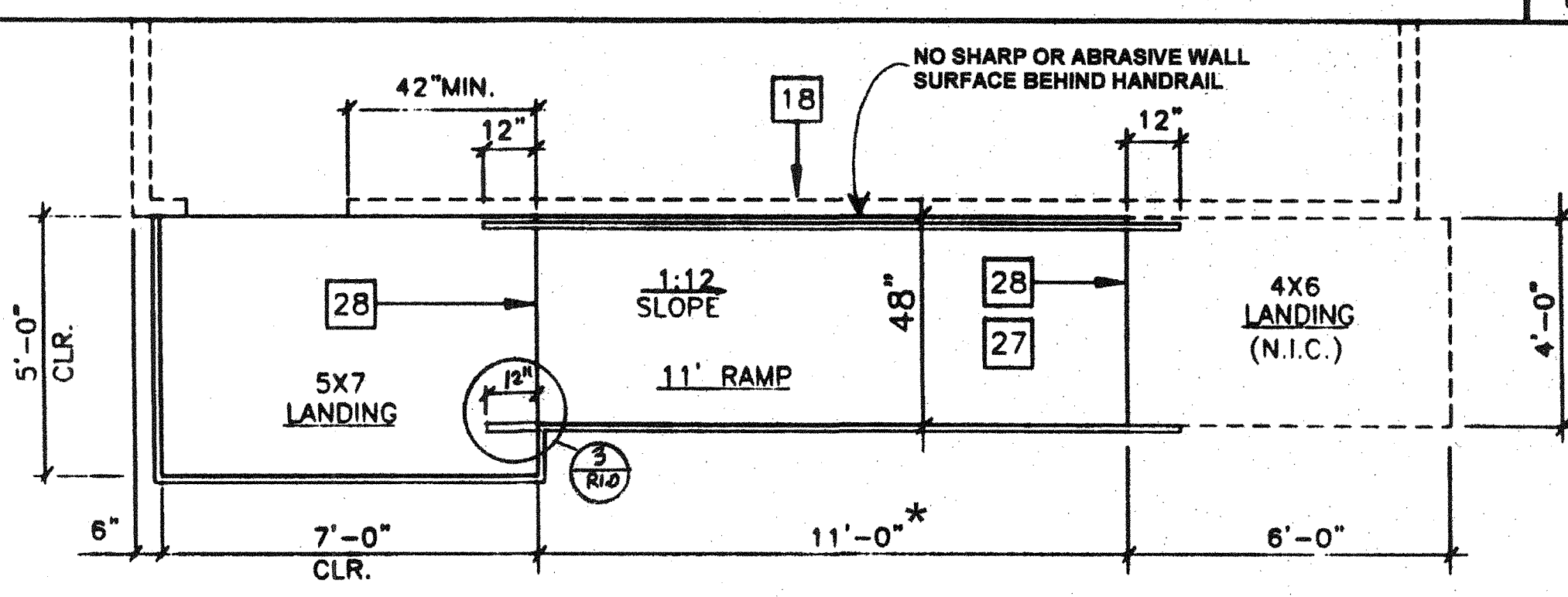
LANDING ELEVATION

13



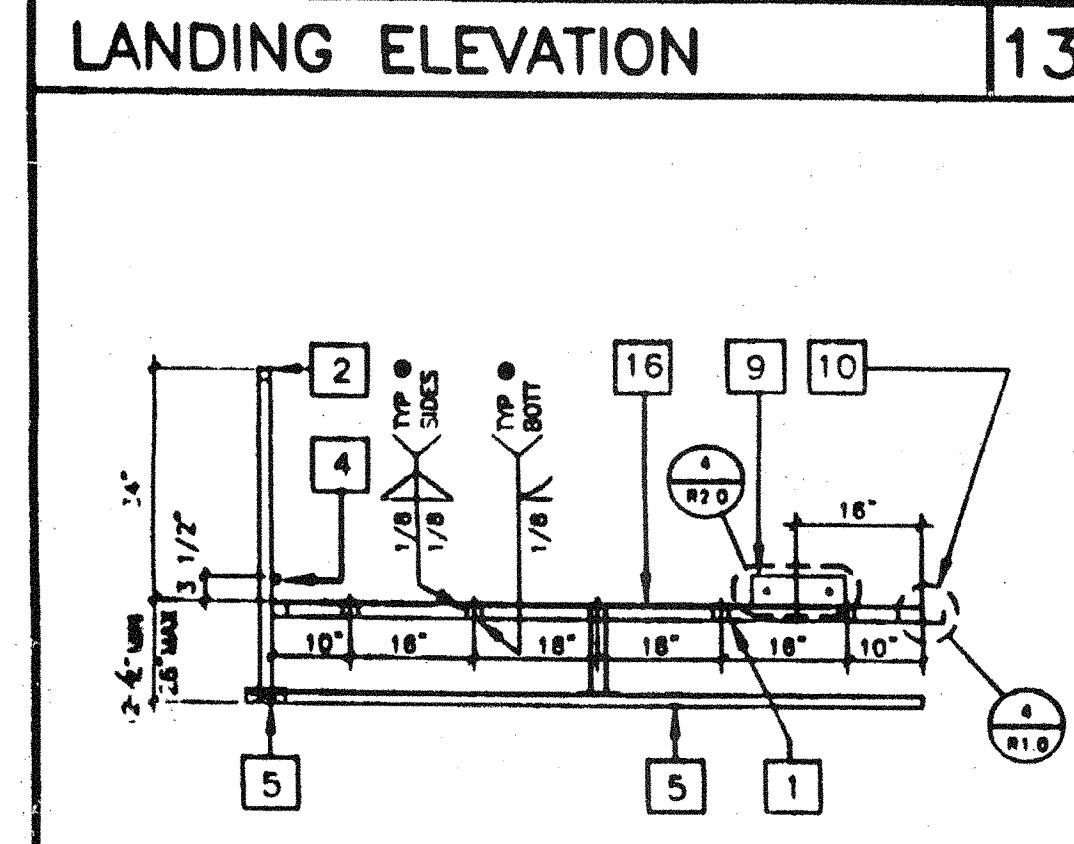
RAMP ELEVATION

8



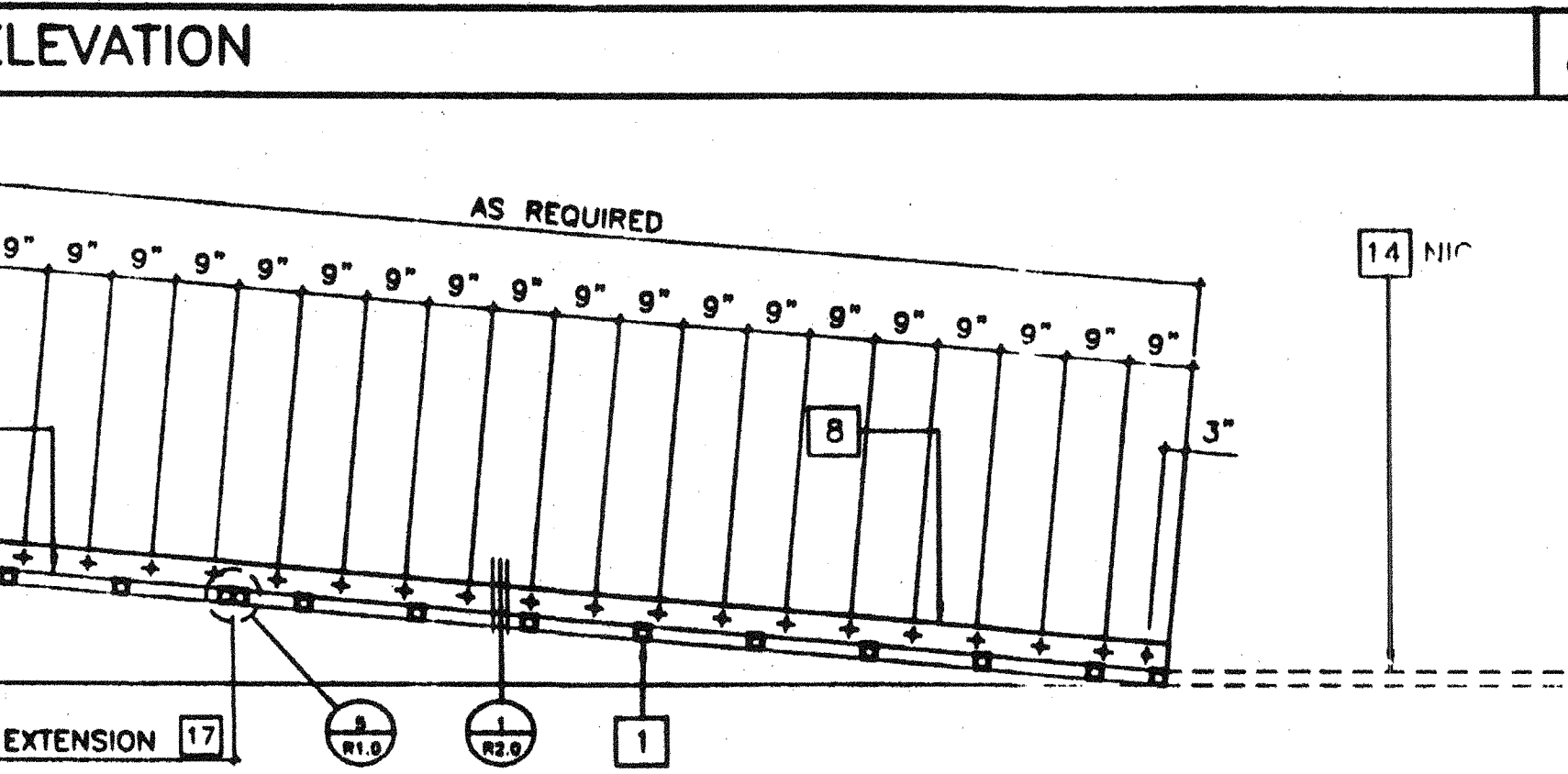
RAMP AND LANDING AT BUILDING

3/8" 2



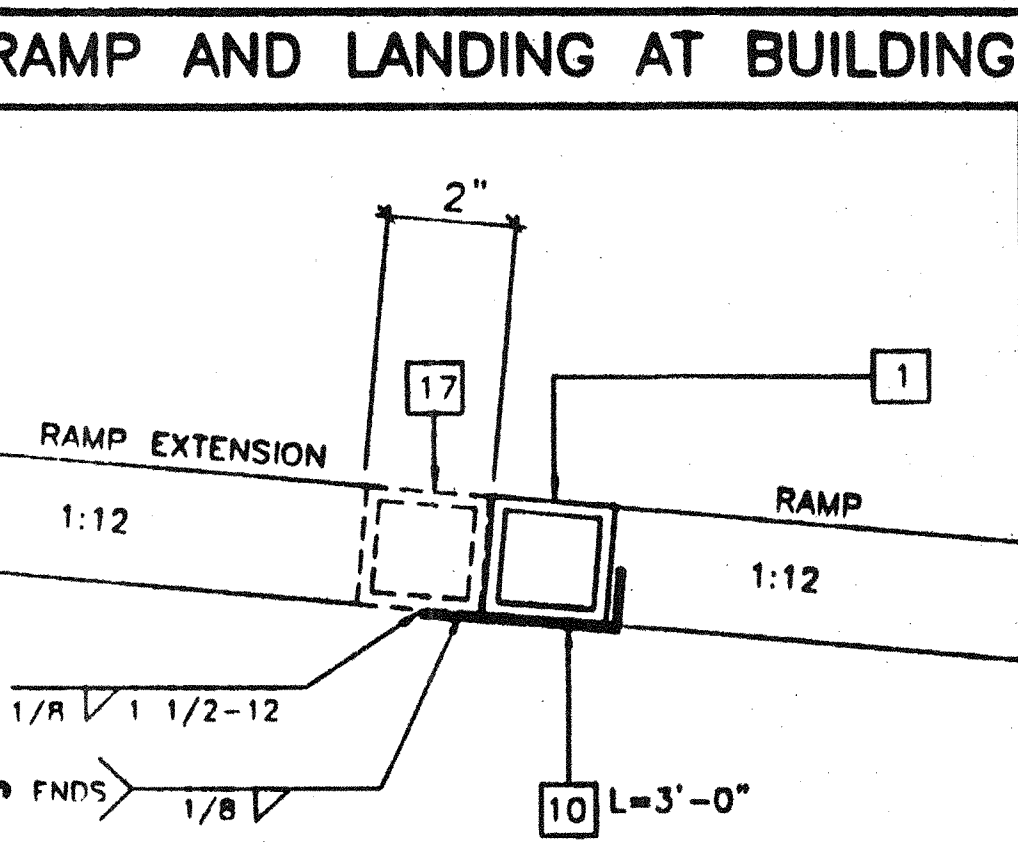
LONG. SECTION @ LANDING

14



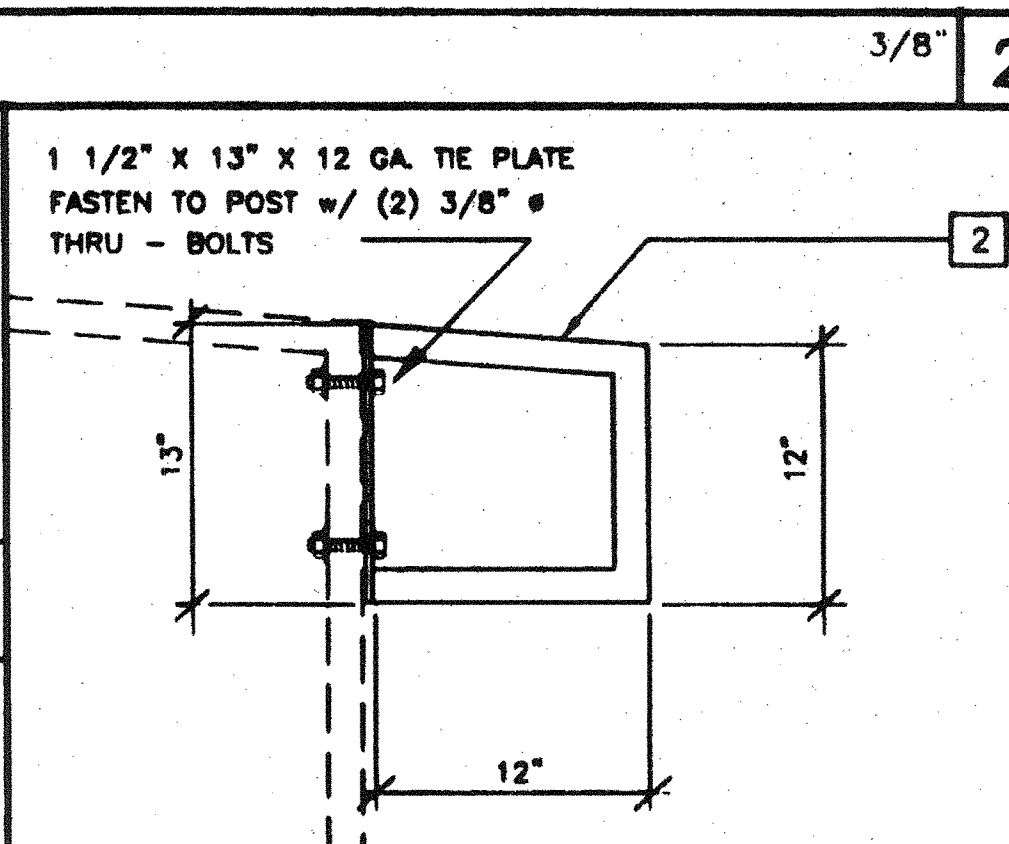
LONGITUDINAL SECTION @ RAMP

9



RAMP EXTENSION TO RAMP

5

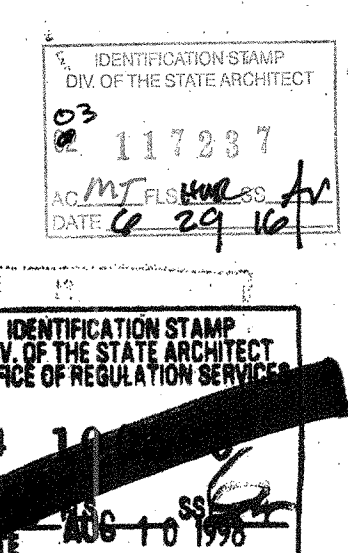


GUARD RAIL EXTENSION

3

NOTES

- 1 RAMP: RAMP SHALL NOT SLOPE MORE THAN 1" IN 12"
- 2 HANDRAILS: HANDRAILS AT BOTH SIDES OF RAMP AT 34" HT.
- 3 SURFACE: LANDING & RAMP TO HAVE NON SLIP SURFACE ANCOR GRIP II AS MANUFACTURED BY AMERICAN CHEMICAL COMPANY (OR EQUAL)
- 4 GROUNDING: PROVIDE GROUNDING OF RAMP TO BLDG FRAME W/ #8 CU TO BOTH GROUND LUGS.
- 5 ARCHITECT SITE / RAMP / LANDING PLANNING: DUE TO VARYING SITE CONDITIONS THE MAXIMUM HEIGHT OF FINISH FLOOR FROM GRADE IS 28" THEREFORE IT IS POSSIBLE THAT THE ACCESS RAMP ATTACHED TO THE BUILDING COULD BE 28'-0" AT A SLOPE OF 1:12 ARCHITECT MUST TAKE INTO ACCOUNT THAT THE RAMP SUPPLIED BY MODTECH INC. IS 11'-0" AT A SLOPE OF 1:12 THEREFORE THE ARCHITECT WILL HAVE TO DESIGN AND PROVIDE SUFFICIENT DETAILS OF RAMP EXTENSIONS AND BOTTOM LANDING DEPENDING ON PARTICULAR SITE CONDITIONS. IN NO WAY IS MODTECH INC. RESPONSIBLE FOR ANY RAMP EXTENSION EXCEEDING THE ORIGINAL PLAN AS SHOWN ON SHEET R-1.
- 6 ALL 1 1/4" AND 1 1/2" TUBE STEEL TO BE OF ASTM A500 GRADE A STEEL (Fy = 39 KSI)



REVISIONS	Electrical Engineer's Seal	Mechanical Engineer's Seal	Structural Engineer's Seal	Architect's Seal

IDENTIFICATION STAMP  
DIV. OF THE STATE ARCHITECT  
OFFICE OF REGULATION SERVICES  
PC 275  
DATE JAN 21 1997  
REVISED

**MODTECH INC.**  
2830 BARRETT AVENUE  
PERRIS, CALIF. 92572  
PH (909) 943-4014  
FAX (909) 940-0427

Job Number: PC 275  
2926  
© MODTECH, INC. 1997  
4-012-084

STKP-39  
drawn by LVM  
date 11/96  
checked by  
date  
modified by  
date  
project no.  
MODTECH Invtl. No.  
**R1.0**  
2867  
2926

RAMP / LANDING