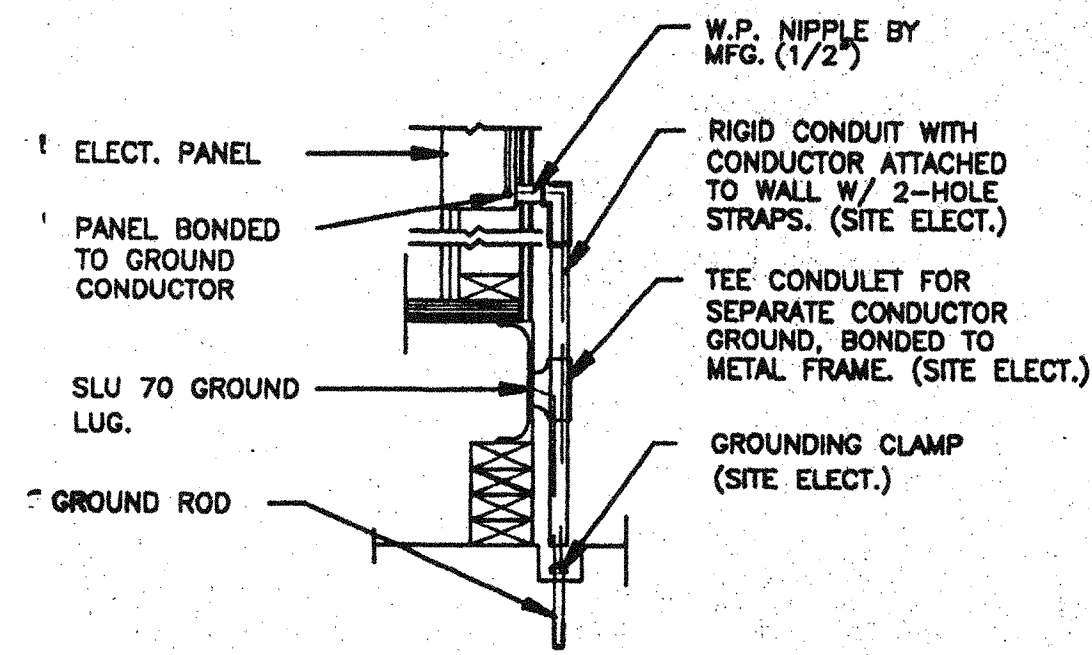


JUMPER @ MOD. LINE



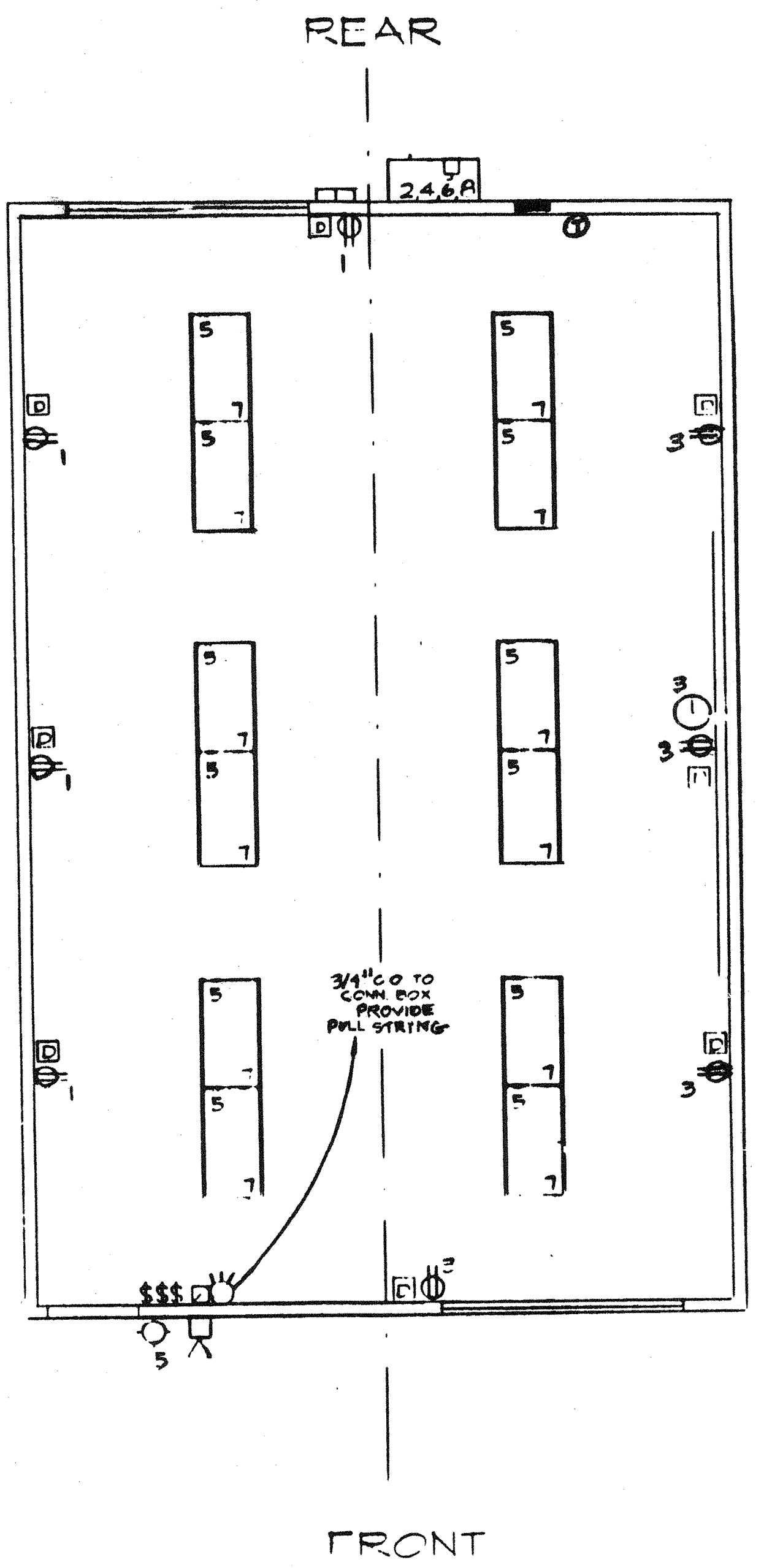
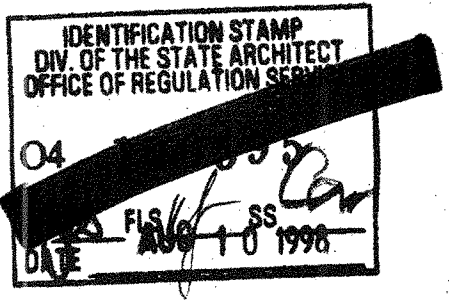
TYP. GROUNDING DETAIL

- EACH BUILDING SHALL BE SEPARATELY GROUNDING WITH A 3/4" RD. X 8' COPPERPLAD STEEL GROUND ROD, WHERE ROCK BOTTOM IS ENCOUNTERED, ROD SHALL BE DRIVEN AT AN ANGLE NOT TO EXCEED 45 DEGREE'S FROM THE VERTICAL OR SHALL BE BURIED IN A TRENCH THAT IS AT LEAST 30" DEEP. (BY SITE ELECTRICAL)
- TESTING: TEST FOR RESISTANCE TO GROUND, IF RESISTANCE EXCEEDS 25 OHMS, INSTALL ADDITIONAL GROUND RODS SEPARATED AT LEAST 6'-0" UNTIL RESISTANCE IS REDUCED TO 25 OHMS OR LESS. (BY SITE ELECTRICAL)
- PROVIDE EQUIPMENT ANCHORAGE PER TITLE 24, TABLE 16 J, PART B.
- APPROVAL OF THIS PLAN DOES NOT CONSTITUTE APPROVAL OF THIS FIRE ALARM FOR ALL SITES. THE FIRE ALARM SYSTEM AND/OR COMPONENTS MAYBE REQUIRED TO BE CHANGED DUE TO SITE LOCATION, EXISTING CONDITIONS OR INCOMPATIBLE COMPONENTS.
- GROUND MG TEST SHALL BE DONE IN THE PRESENCE OF THE PROJECT INSPECTOR, ALL GROUNDING SHALL BE IN ACCORDANCE WITH C.E.C. ARTICLE 250.

VOLTAGE: 120/240 V		FANEL A		FIELD BOTTOM			
MAIN: 100 A (HOM 120H 100C SQD)		LOCATION:		MOUNTING: RECESSED			
LOAD	WATTS	BREAKER	U	A	B	WATTS	LOAD
	AF	BF	AMPS	P	Q	AF	BF
RECEPTACLES	120	20	1			2000	HVAC (3 1/2 TON)
RECEPTACLES & CLOCK	900	20	3			4000	HVAC (3 1/2 TON)
INT./EXT. LIGHTS	1060	20	5			3120	HEAT STRIPS 5 KW
INT./ LIGHTS	960	20	7			3120	HEAT STRIPS 5 KW
FIRE ALARM	40		9				
			11				
			13				
			15				
			17				
WATTS/PHASE	A = 9020	1820	1860			7200	7200
TOTAL	18,560	WATTS	(77.3) 78 AMPS	120/240	VOLTS	1 Ø	B = 9060 WATTS/PHASE
							3 WIRE

NCL = 16,160

- ### KEY NOTES
- 4'x8' WEATHER PROOF SIGNAL BOX (6'x4')
  - HVAC UNIT [HV]
  - ELECTRICAL PANEL A
  - EXTERIOR LIGHT FIXTURE
  - 4s JUNCTION BOX FOR FIRE ALARM EXT HORN (ROUGH IN ONLY)
  - DUPLEX WALL RECEPTACLE 15-A 120V 7-1/8" AFF.
  - CLOCK OUTLET (SEE SPEC'S)
  - 2' x 4' FLUORESCENT LIGHT AND FIXTURE 4-TUBE (SEE SPEC'S)
  - 4s JUNCTION BOX FOR FIRE ALARM INT HORN/STROBE (ROUGH IN ONLY)
  - 4s JUNCTION BOX FOR FIRE ALARM PULL STATION + 48"
  - J BOX & CONDUIT FOR DATA CABLING LOCATE ADJACENT TO ALL STD RECEPTACLES (ROUGH IN ONLY - STUB UP ABOVE CEILING (14" AFF))



ELECTRICAL PLAN

SCALE 1/4"=1'-0"

**SCHOOL EQUIPMENT ANCHORAGE**  
THE FOLLOWING IS FOR THE ARCHITECTS INFORMATION ONLY

THE SEISMIC ANCHORAGE OF ELECTRICAL EQUIPMENT SHALL CONFORM TO C.C.R. TITLE 24, SECTION 2512 (G) AND TABLE 25-P. ANCHORAGE DETAILS FOR ROOF FLOOR MOUNTED EQUIPMENT WEIGHING LESS THAN 400 LBS. AND MOUNT EQUIPMENT WEIGHING LESS THAN 20 LBS. MAY BE OMITTED FROM THE PLANS.

**FOR ELECTRICAL DRAWINGS**  
ALL ELECTRICAL EQUIPMENT SHALL BE BRACED OR ANCHORED TO RESIST A HORIZONTAL FORCE ACTING IN ANY DIRECTION USING THE FOLLOWING CRITERIA:

EQUIPMENT ON GRADE	20% OF OPERATING WEIGHT
EQUIPMENT ON STRUCTURE	50% OF OPERATING WEIGHT

FOR FLEXIBLY MOUNTED EQUIPMENT USE 4 X THE ABOVE VALUES AND FOR SIMULTANEOUS VERTICAL FORCE USE 1/3 X THE HORIZONTAL FORCE

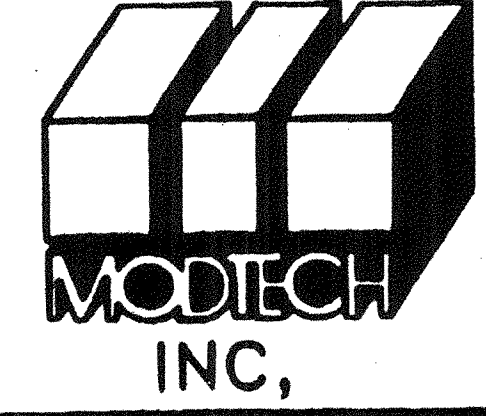
THE ABOVE VALUES ARE FOR AN IMPORTANCE FACTOR 1.0 AND SEISMIC ZONE 2 = 0.4

WHERE ANCHORAGE DETAILS ARE NOT SHOWN ON THE DRAWINGS THE FIELD INSTALLATION SHALL BE SUBJECT TO THE APPROVAL OF THE ARCHITECT AND THE FIELD ENGINEER OF THE OFFICE OF THE STATE ARCHITECT.

- ### LEGEND
- 2' x 4' FLUORESCENT LIGHT FIXTURE WITH 4-TUBE (SEE SPEC'S) 14" AFF.
  - EXTERIOR LIGHT FIXTURE +2'-6" AFF.
  - SWITCH +48" AFF.
  - ELECTRICAL PANEL 5'-0" AFF.
  - DUPLEX WALL RECEPTACLE 15-A 120V 7-1/8" AFF.
  - THERMOSTAT +48" & MAX AFF.
  - J BOX FOR FIRE ALARM EXT HORN/BELL +8'-6" AFF.
  - 4s JUNCTION BOX FOR FIRE ALARM INT HORN / STROBE +80" AFF.
  - FA PULL STATION +48" AFF.
  - 4'x8' EXTERIOR WEATHERPROOF SIGNAL BOX (6'x4') +18" AFF.
  - J BOX & CONDUIT FOR DATA CABLING LOCATE ADJACENT TO ALL STD RECEPTACLES (ROUGH IN ONLY - STUB OUT ABOVE CEILING) MOUNTED AT 18" AFF.
  - CLOCK OUTLET +7'-6" AFF.

STKP-39

REVISIONS	ELECTRICAL	MECHANICAL	STRUCTURAL	ARCHITECT	DIVISION OF THE STATE ARCHITECT
△					REVISED
△					
△					
△					
△					



MODTECH INC.  
2830 BARRETT AVE.  
PEPPER, CA. 92572  
PH. (909) 943-4014  
FX. (909) 940-0427

CONFIDENTIAL - THIS DOCUMENT AND THE INFORMATION CONTAINED HEREIN ARE THE PROPERTY OF MODTECH INC. UNAUTHORIZED COPYING, DISCLOSURE, OR OTHER UNAUTHORIZED USES ARE PROHIBITED.

4012-084

2926

IDENTIFICATION STAMP  
DIV. OF THE STATE ARCHITECT  
OFFICE OF REGULATION SERVICES  
No. 1173337  
DATE 04/10/1996

DATE 04/10/1996

DATE 2067 2926

ELECTRICAL PLAN E1.0