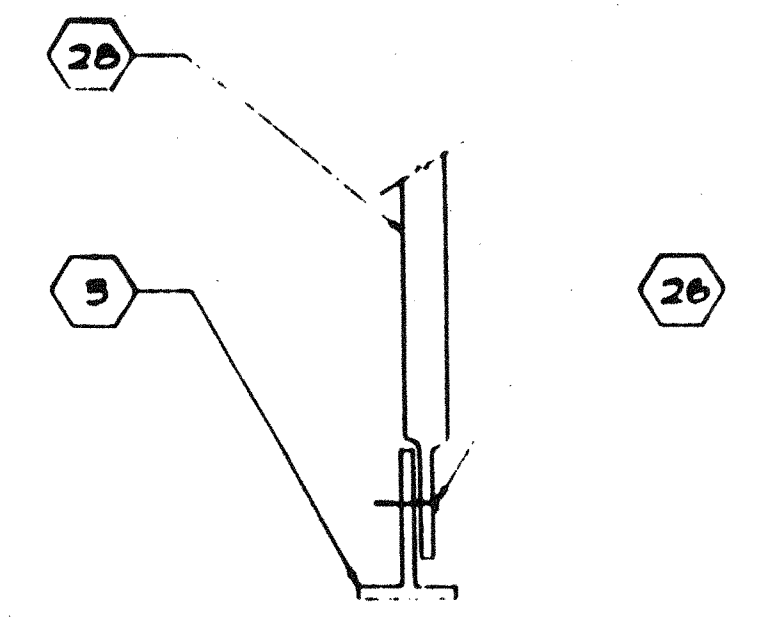


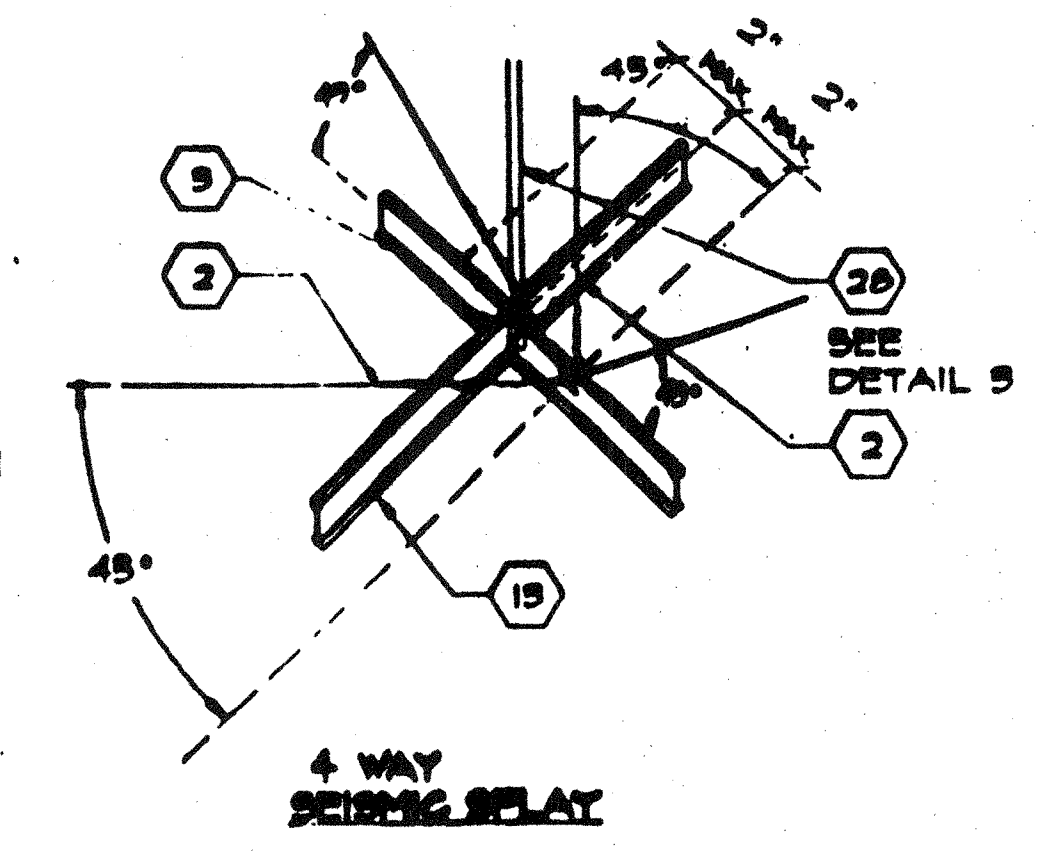
ALTERNATE  
TYPICAL FIXED SIDE

7



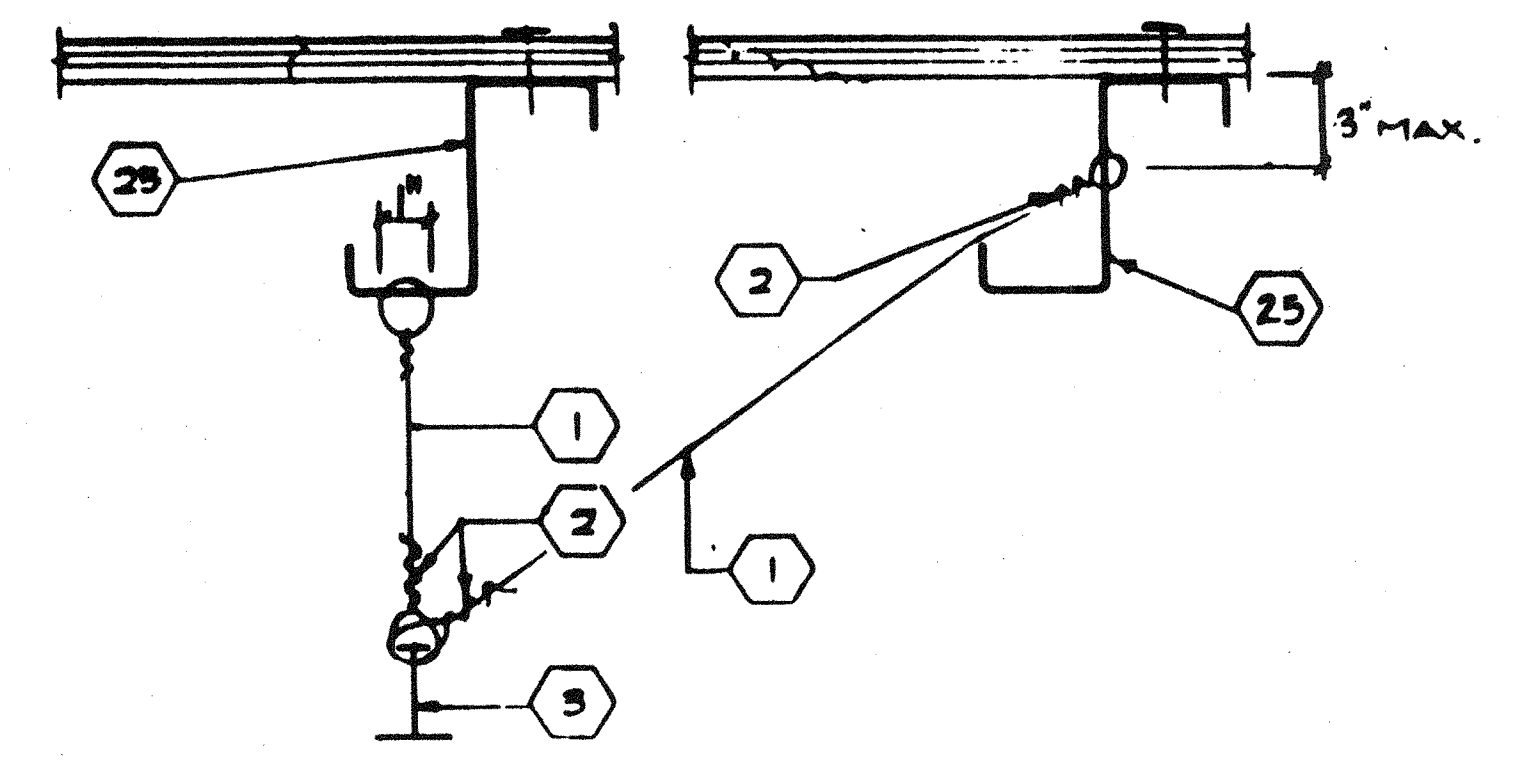
NOTE: CONDUIT MAY BE CRIMPED ON EITHER SIDE OF T-BAR, DEPENDING UPON CONDITION & LOCATION  
ALT. CONN. @ BOTTOM

4

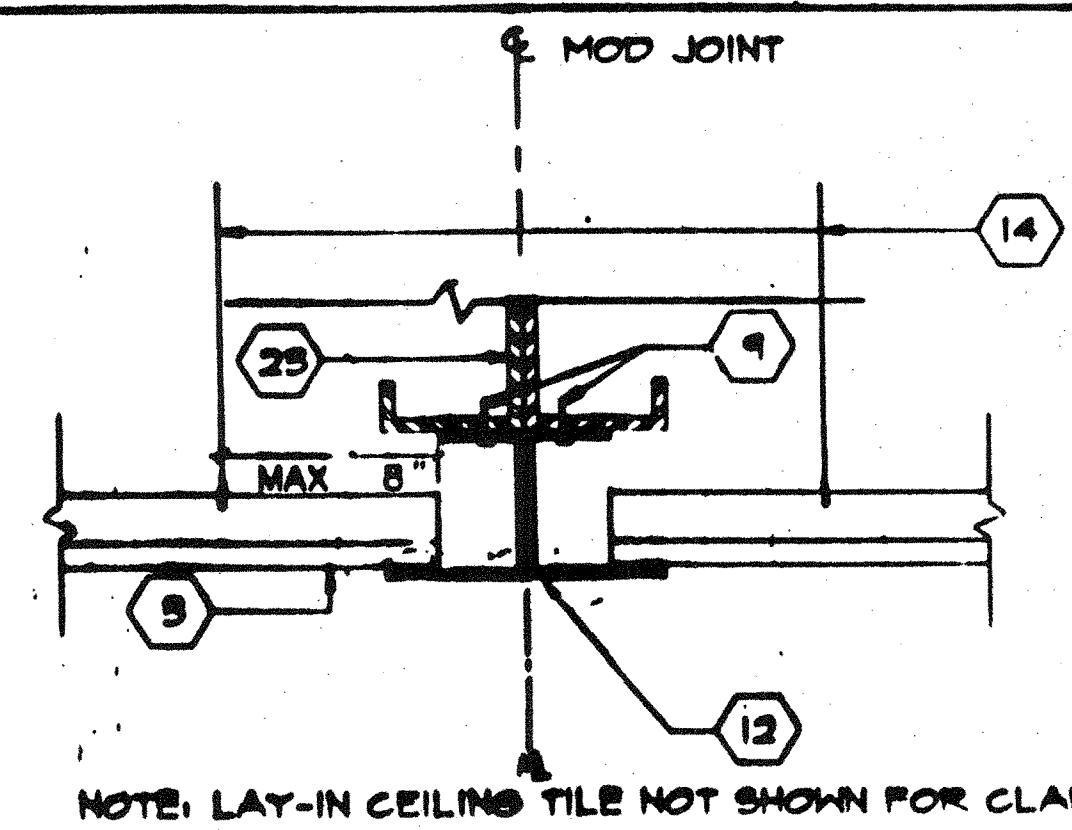


4 WAY  
CEILING DETAIL

1



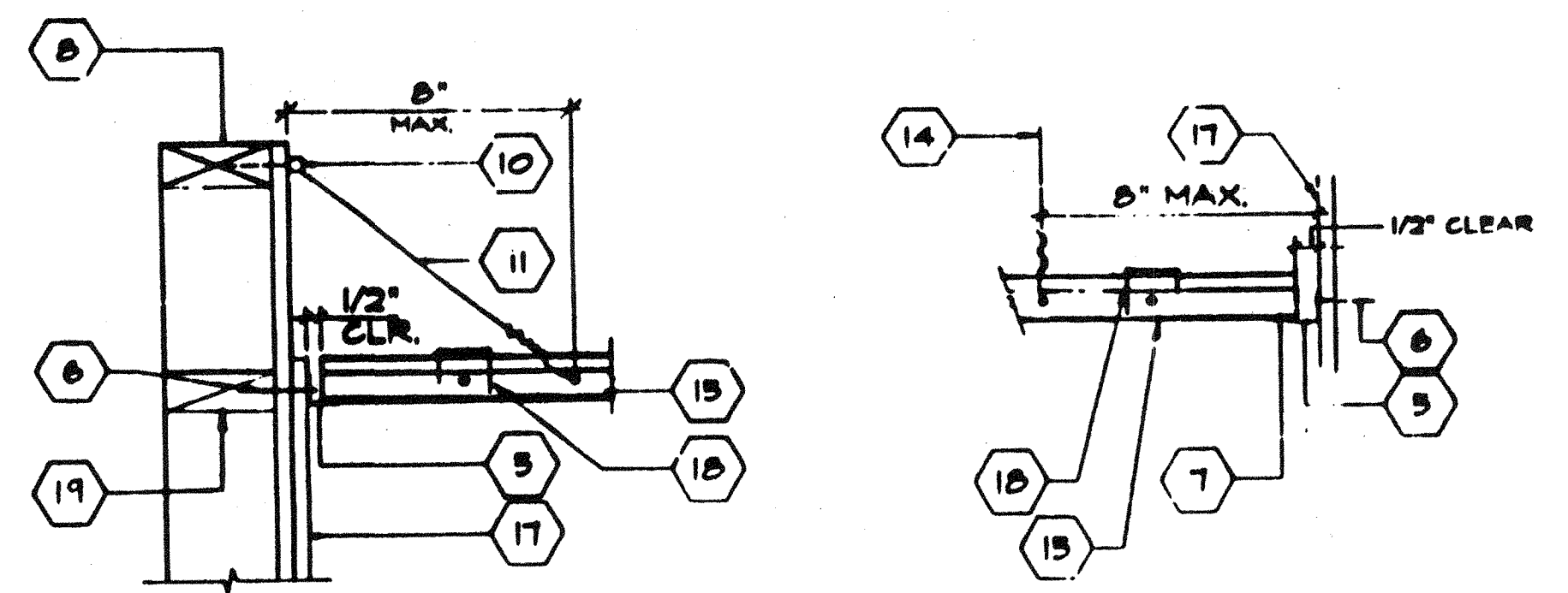
5



NOTE: LAY-IN CEILING TILE NOT SHOWN FOR CLARITY.  
GRID AT MOD LINE  
FREE SIDE

SCALE 9"=1'

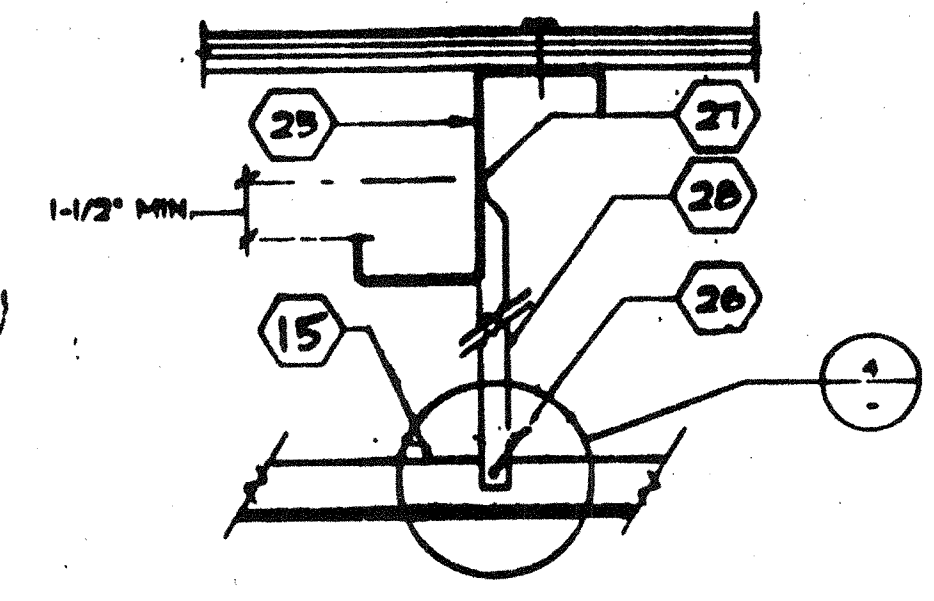
2



ALTERNATE

TYPICAL FREE SIDE

6

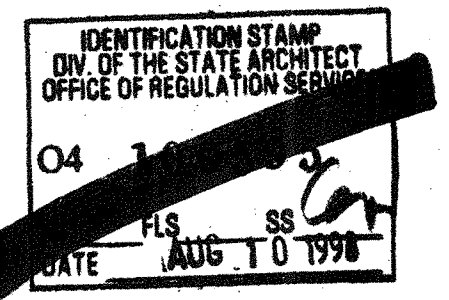


NOTE: CONDUIT MAY BE CRIMPED ON EITHER SIDE OF T-BAR DEPENDING UPON CONDITION & LOCATION

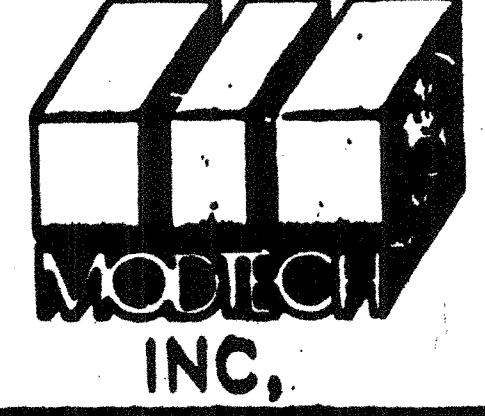
3

KEY NOTES

- 1 12GA HANGER WIRE IN PUNCHES OF CONCRETE
- 2 12GA WIRE WITH 4 WRAPS IN 1/2" HOLE & RUN PERPENDICULAR TO HANGER
- 3 MAIN RUNNER
- 4 1/8" POP RIVET TO EACH T-BAR
- 5 WALL ANGLE
- 6 6d 16-gauge FRAMING TO WALL STUD
- 7 ANGLE WITH 1/8" POP RIVET TO EACH T-BAR CONNECTION TO WALL ANGLE
- 8 TOP PLATE
- 9 #10 ST.S.M.S. #4 CC
- 10 3"x1/4" EYED SCREEN
- 11 HANGER TO WALL WHERE NO HANGER IS MAX SLOPE 1" IN 6"
- 12 28GA JETCOAT
- 13 CROSS TEE
- 14 12GA HANGER WIRE AT THE END ON EACH END MIN. 4 WRAPS IN MAX 1/2" - SEE DETAIL #7 FOR WIRE TO PURLIN ATTACHMENT
- 15 MAIN RUNNERS OF CROSS TEE
- 16 ACOUSTICAL BOARD
- 17 FINISH WALL
- 18 HORIZONTAL STRUTS SHALL RUN SOUTH OF PERIMETERS NOT FOR RIVETING USE 6d RING SHANK NAIL TO MATE
- 19 FIRE BLOCK (TYPICAL - CBC #608)
- 20 NOT USED
- 21 PROVIDE SPACE AT ALL MEMBERS
- 22 NOT USED
- 23 ROOF BEAM [STR]
- 24 NOT USED
- 25 ROOF PURLIN [STR]
- 26 CRIMP CONDUIT AND ATTACH TO T-BAR WITH TEKSCREWS
- 27 CRIMP CONDUIT TO FASTEN IN 2" HOLE
- 28 3/4" EMT CONDUIT - MAX 2' L
- 29 NOT USED



ARCHITECT	ELECTRICAL	STRUCTURAL	MECHANICAL	FIRE MARSHAL	ACCESS COMPLIANCE	STRUCTURAL SAFETY



4012-084  
2926  
REFLECTED CEILING DETAILS  
A7.2  
STKP-39  
2067  
2926