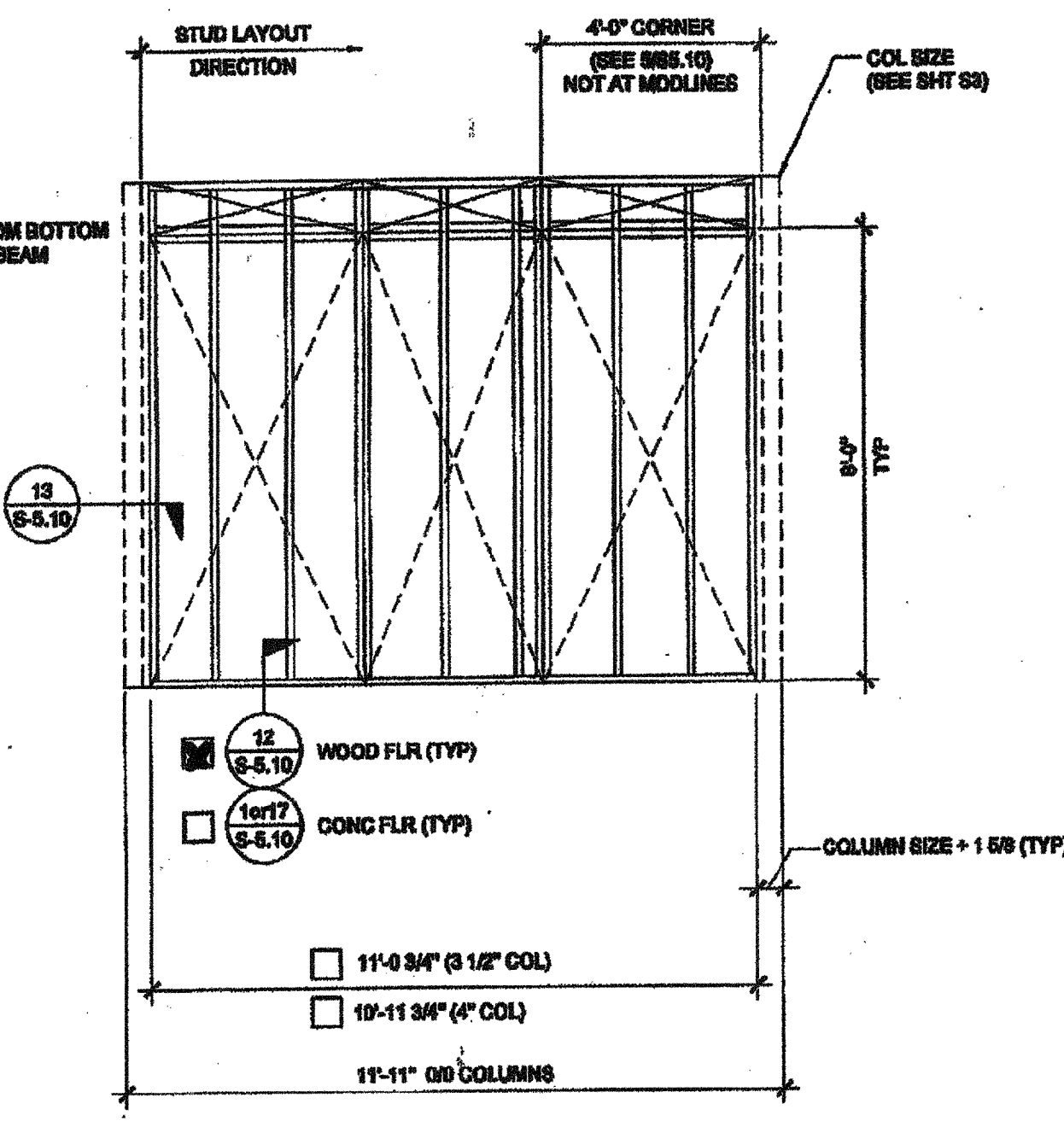
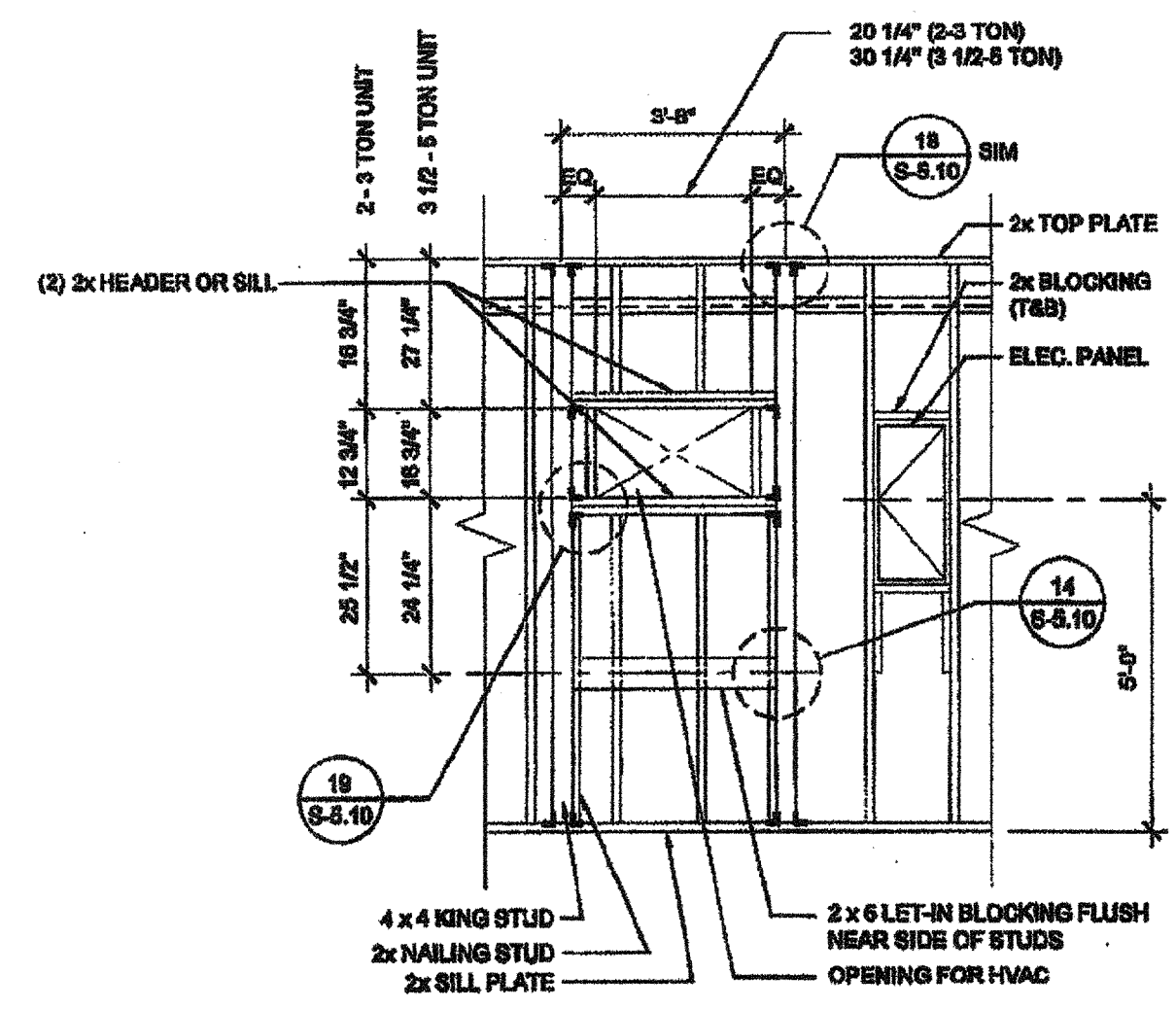


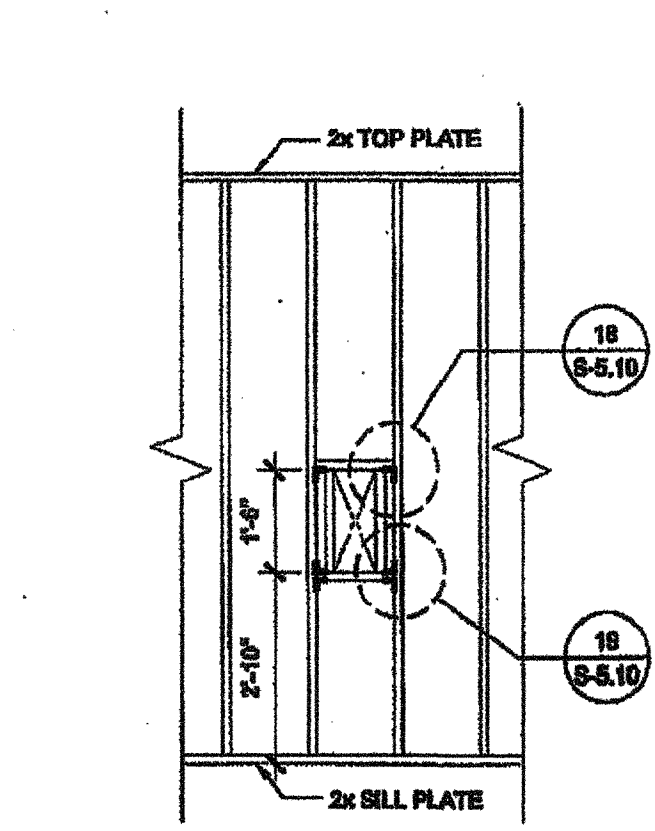
TYPICAL SIDE WALL



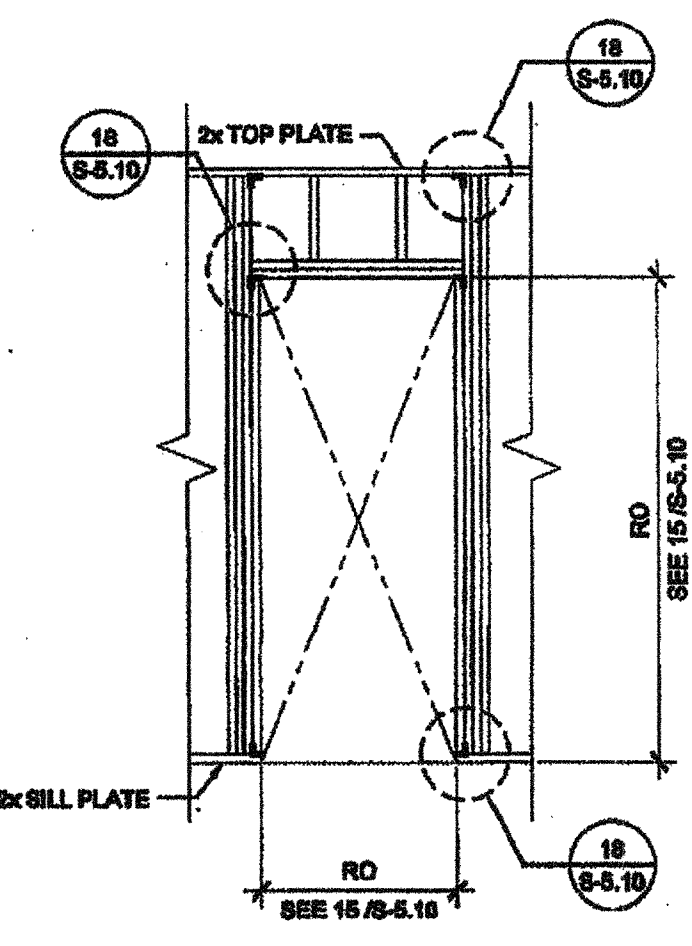
TYPICAL END WALL



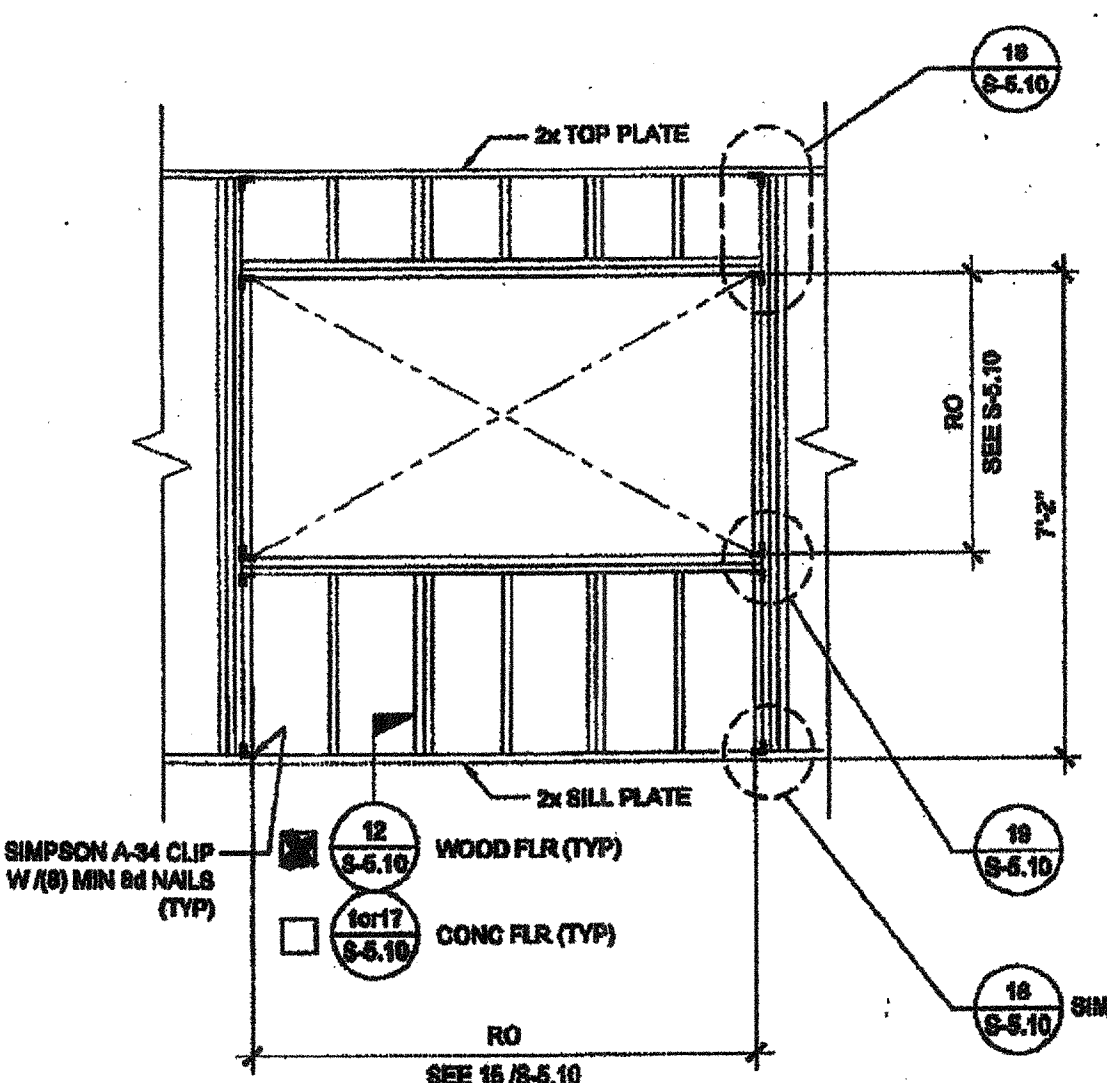
TYPICAL HVAC



FIRE EXTINGUISHER CABINET BLOCKOUT



TYPICAL DOOR



TYPICAL WINDOW

NOTES

WALL HEIGHT SCHEDULE

COLUMN HEIGHT	8'-0"	9'-0"	10'-0"	10'-6"
CONCRETE FLOOR	8'-11 7/8"	9'-8 7/8"	9'-11 7/8"	10'-5 7/8"
WOOD FLOOR	8'-10 3/4"	9'-4 3/4"	9'-10 3/4"	10'-4 3/4"

NOTE: IF PARAPET IS USED & HIGHER THAN 18", END WALLS MUST BE 2x6 @ 24" O.C.

THESE DRAWINGS AND ALL MATERIAL CONTAINED HEREIN ARE THE PROPERTY OF SILVERCREEK INDUSTRIES, INC. (SCI INC) AND SHALL NOT BE REPRODUCED, COPIED OR OTHERWISE USED IN WHOLE OR IN PART TO ASSIST IN THE MAKING OF OR FOR THE PURPOSE OF FURNISHING ANY INFORMATION FOR THE MAKING OF DRAWINGS, PRINTS, APPARATUS OR PARTS THEREOF WITHOUT THE FULL KNOWLEDGE AND WRITTEN CONSENT OF SCI INC. ALL PATENTABLE MATERIAL CONTAINED HEREIN AND ORIGINATING WITH SCI INC SHALL BE THE PROPERTY OF SCI INC.

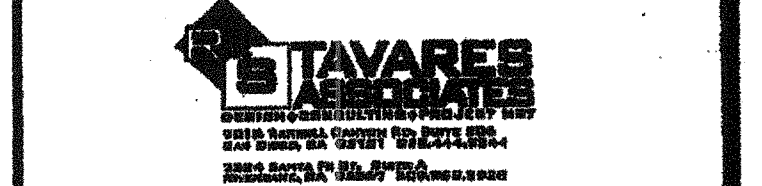
SILVER CREEK INDUSTRIES, INC.



175 EAST MORRIS FERRIS, CALIFORNIA 92571
PHONE: 951-943-1323 FAX: 951-943-2211

PROJECT NAME:
CLASS LEASING CLASSROOMS BLDG'S

SHEET TITLE:
WALL FRAMING ELEVATIONS WOOD STUDS



12/28/2011

FEB 26 2015
REVISED
IDENTIFICATION STAMP
DIV. OF THE STATE ARCHITECT
OFFICE OF REGULATION SERVICES
04 113892
AC. FLS. 68 10
DATE NOV 20 2014

REGISTERED ARCHITECT
STATE OF CALIFORNIA
C10322
2-24-17

PROJECT SPECIFIC STATE AGENCY APPROVAL
DIV. OF THE STATE ARCHITECT
OFFICE OF REGULATION SERVICES
04 113892
AC. FLS. 68 10
DATE AUG 28 2014

IDENTIFICATION STAMP
DIV. OF THE STATE ARCHITECT
OFFICE OF REGULATION SERVICES
04 113892
AC. FLS. 68 10
DATE APR 23 2015

ORIGINAL PC STATE AGENCY APPROVAL
IDENTIFICATION STAMP
DIV. OF THE STATE ARCHITECT
OFFICE OF REGULATION SERVICES
04 113892
AC. FLS. 68 10
DATE MAR 28 2015

REVISIONS

SILVER CREEK INDUSTRIES
24" x 40" PC

PROJECT NO:
DRAWN BY:
SCALE: AS NOTED
DATE: 12-28-11

P.C. SHEET NUMBER
S-5.00

STKP 140