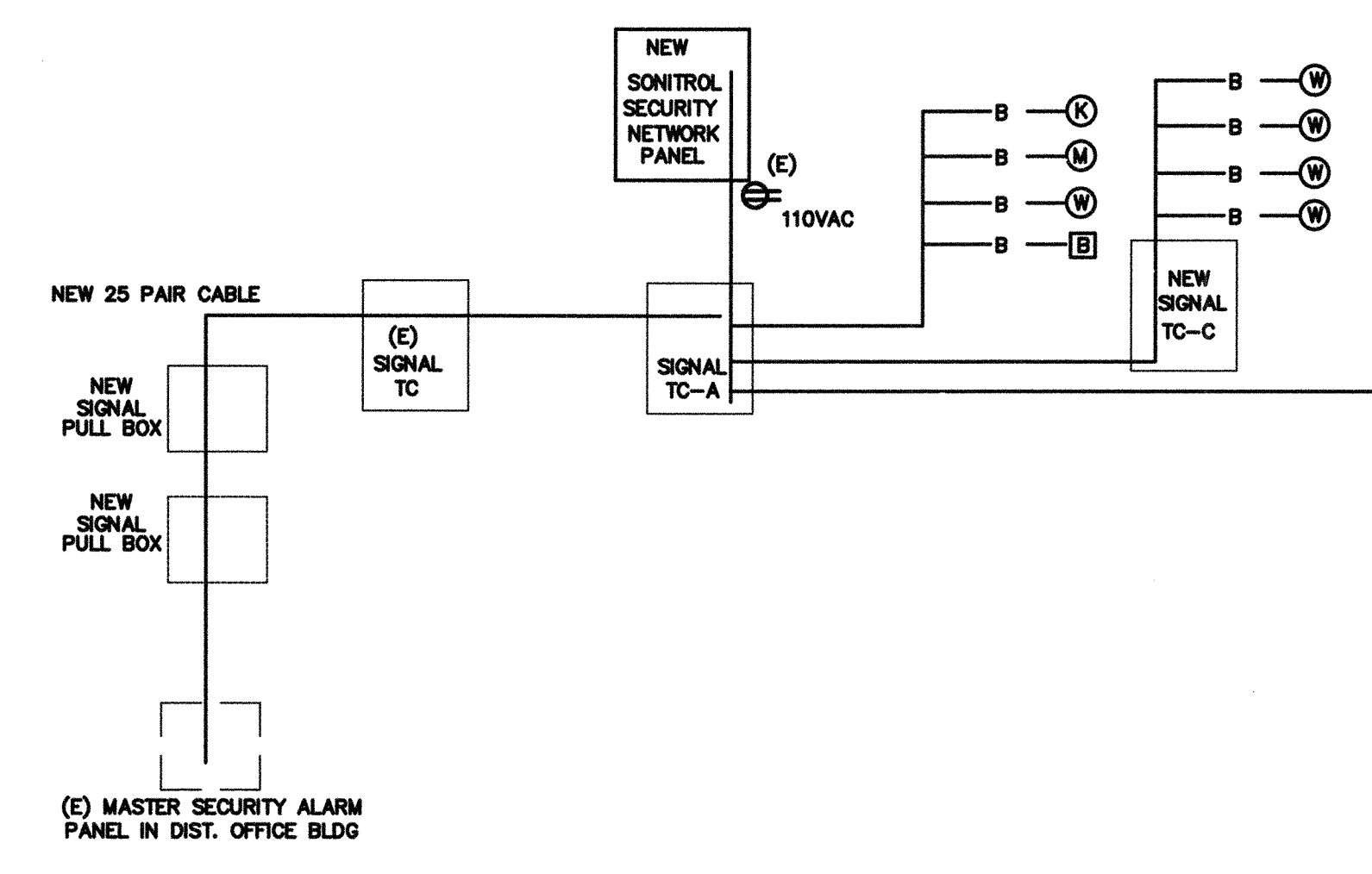
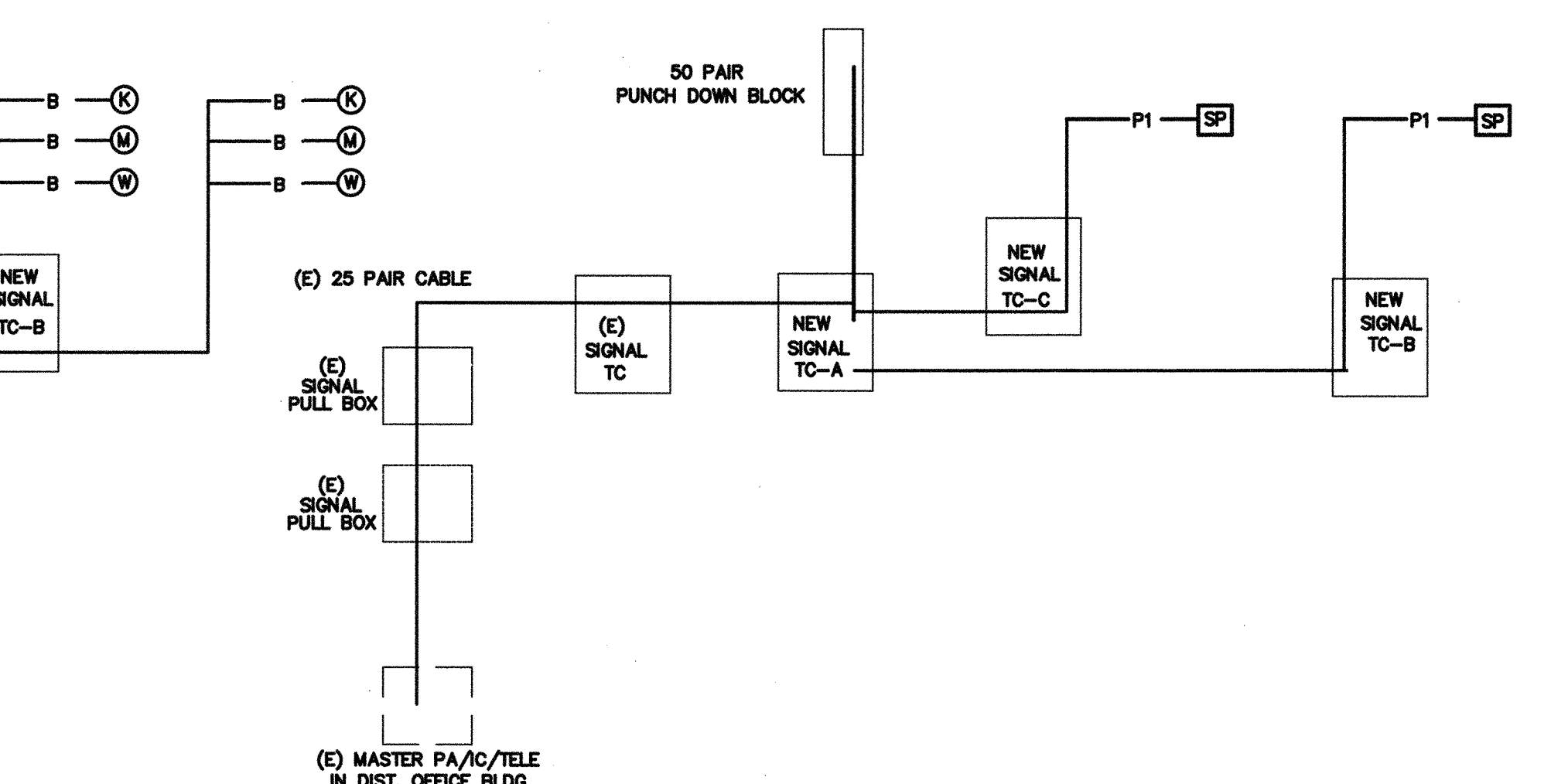


FIBER OPTIC CABLE
 THREE MULTIMODE PAIRS (SIX STRANDS) AND THREE SINGLE-MODE PAIRS (SIX STRANDS)
 OPTICAL CABLE COMPANY # DX 12/0650-6W35B/1UC-6SYMC-YMD/900-OFNR OF EQUAL
DATE CABLE
 5ENP4P24-BL-BER-PV OR EQUAL
CABLE TESTING
 ALL FIBER OPTIC CABLE MUST BE TESTED TO SUPPORT 1000BASE-FX FULL DUPLEX STANDARDS,
 ALL CAT 6 CABLE MUST BE TESTED TO SUPPORT 100BASE-TX.
 TEST RESULTS ARE TO BE PROVIDED TO SCHOOL TECHNOLOGICAL SERVICES FOR REVIEW AND APPROVAL.
IDF SWITCH EQUIPMENT
 F/O CISCO WS-C29500-24 W/ WS-C5484 GBIC
 TP CISCO WS-C2950-24
 CABINETS SOUTH WESTERN DATA PRODUCT SWE 4000-18UBDLK OR EQUAL
 JACKS ALLEN TEL AT35-16 OR EQUAL
 FACEPLATE ALLEN TEL AT30-2-09 OR EQUAL
 PATCH PANEL ALLEN TEL ATPLN-24 OR EQUAL
LABELING IDENTIFICATION
 ALL INSTALLED EQUIPMENT, CABLES, TERMINATIONS, ETC. WILL BE PERMANENTLY AND UNIQUELY MARKED. CABLES
 WILL BE MARKED USING A CONVENTION THAT WILL IDENTIFY ITS ORIGIN AND DESTINATION. LAN TERMINATIONS WILL
 SIMILARLY BE MARKED TO UNIQUELY IDENTIFY THEM WHILE PROVIDING THE SOURCE AND DESTINATION OF CABLE.
 IDENTIFICATIONS MUST BE SUCH THAT THEY WILL NOT RUB OFF, FALL OFF, OR EASILY BREAK AWAY.
DATA COMMUNICATION SYSTEM NOTES
 1. CONTRACTOR TO PROVIDE ALL EQUIPMENT, PATCH CABLE AND ACCESSORY FOR A FULLY FUNCTIONAL SYSTEM.
 2. NEW DATA JACK WIRING CONFIGURATION MUST BE MATCHED EXISTING SYSTEM. FIELD VERIFY PRIOR TO
 INSTALLATION.
 3. ADMINISTRATIVE NODE TO BE RED IN COLOR WITH THE INSTRUCTIONAL NODE TO BE BLUE IN COLOR. NODE
 LOCATION MUST BE 12" WITHIN POWER RECEPTACLE AND FIELD VERIFY EXACT LOCATION WITH OWNER PROJECT
 COORDINATOR OR TECHNOLOGICAL SERVICES PERSONNEL PRIOR TO INSTALLATION.
 4. ALL EQUIPMENT DOCUMENTATION AND WARRANTY INFORMATION WILL BE PROVIDED TO OWNER TECHNOLOGICAL
 SERVICES. WARRANTY CARDS WILL BE PROVIDED TO USER TECHNOLOGICAL SERVICES FOR FILING WITH
 MANUFACTURERS UPON COMPLETION OF INSTALLATION.

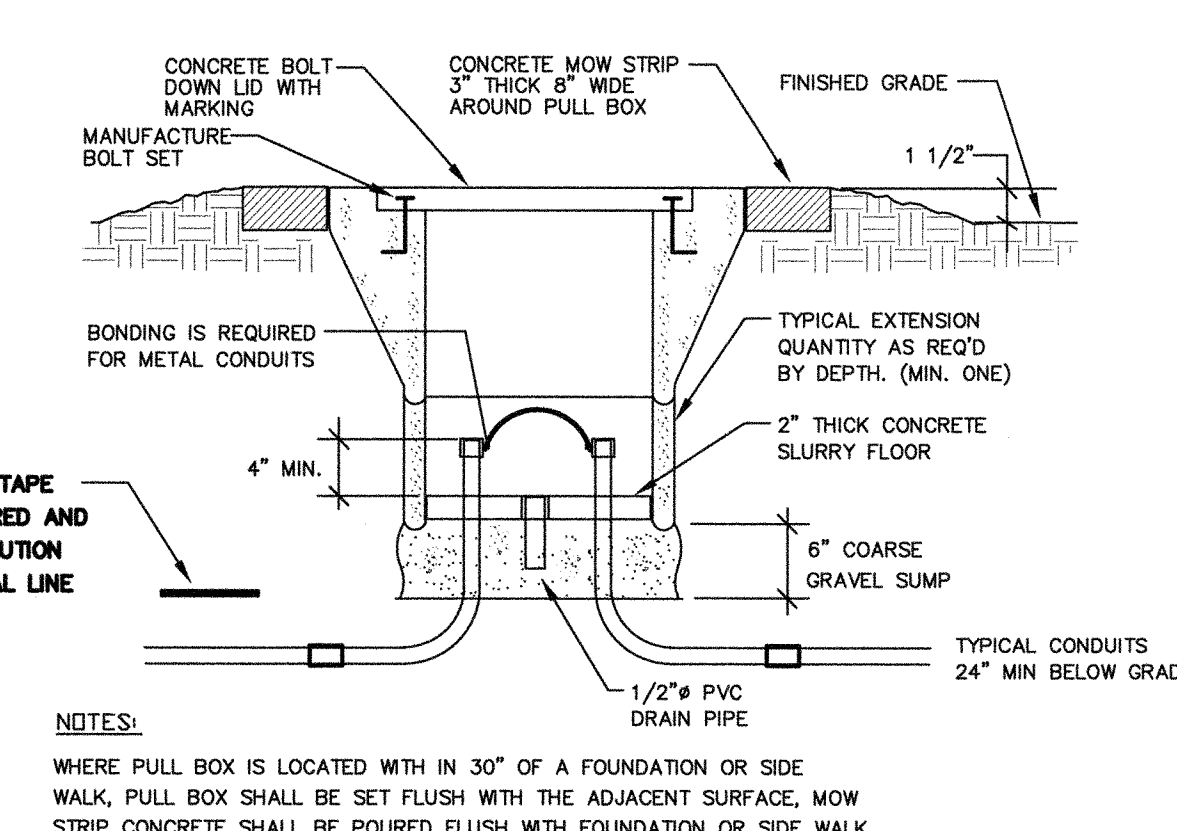
7 DATA COMMUNICATION SYSTEM RISER DIAGRAM
 N.T.S.



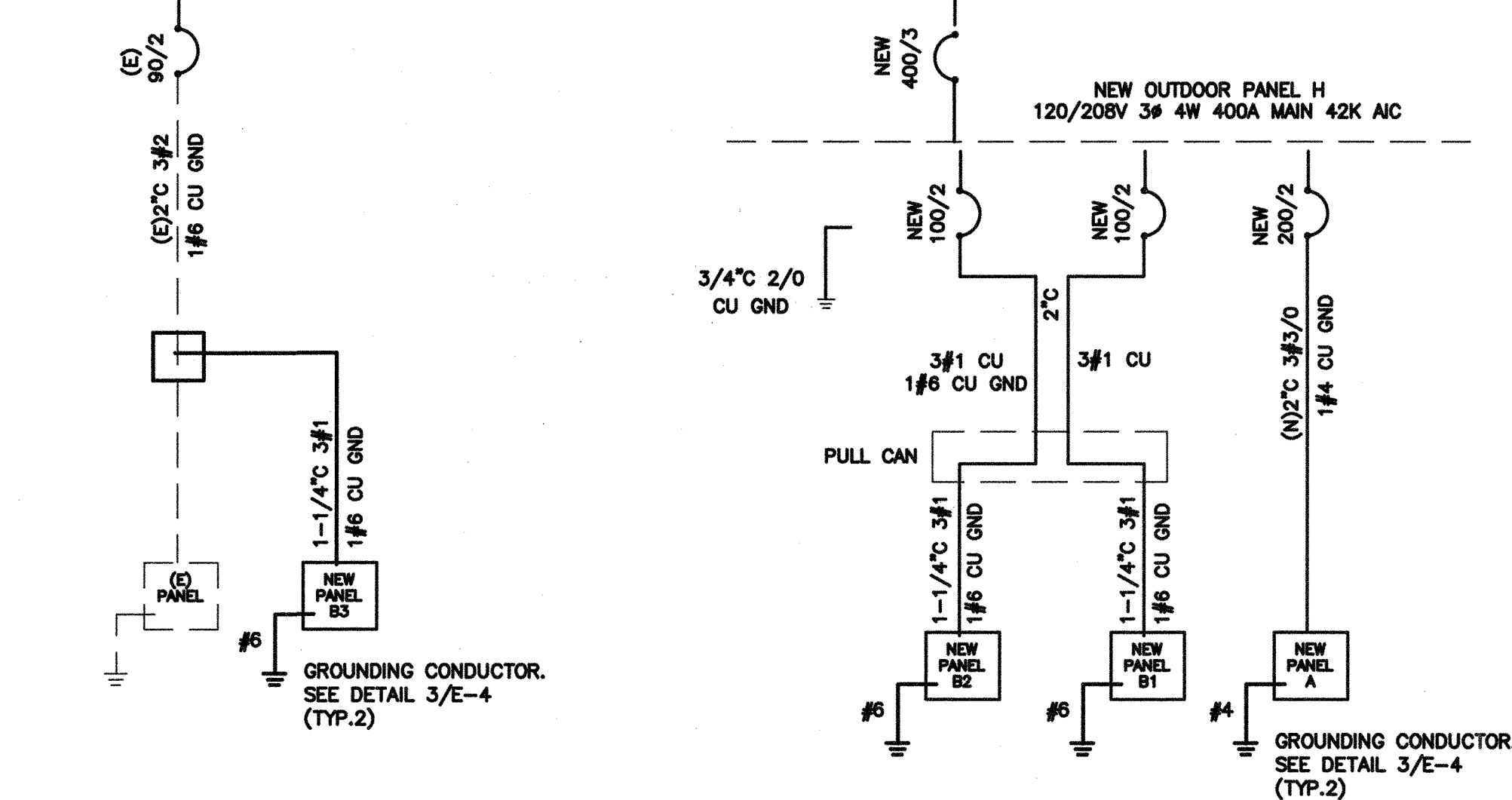
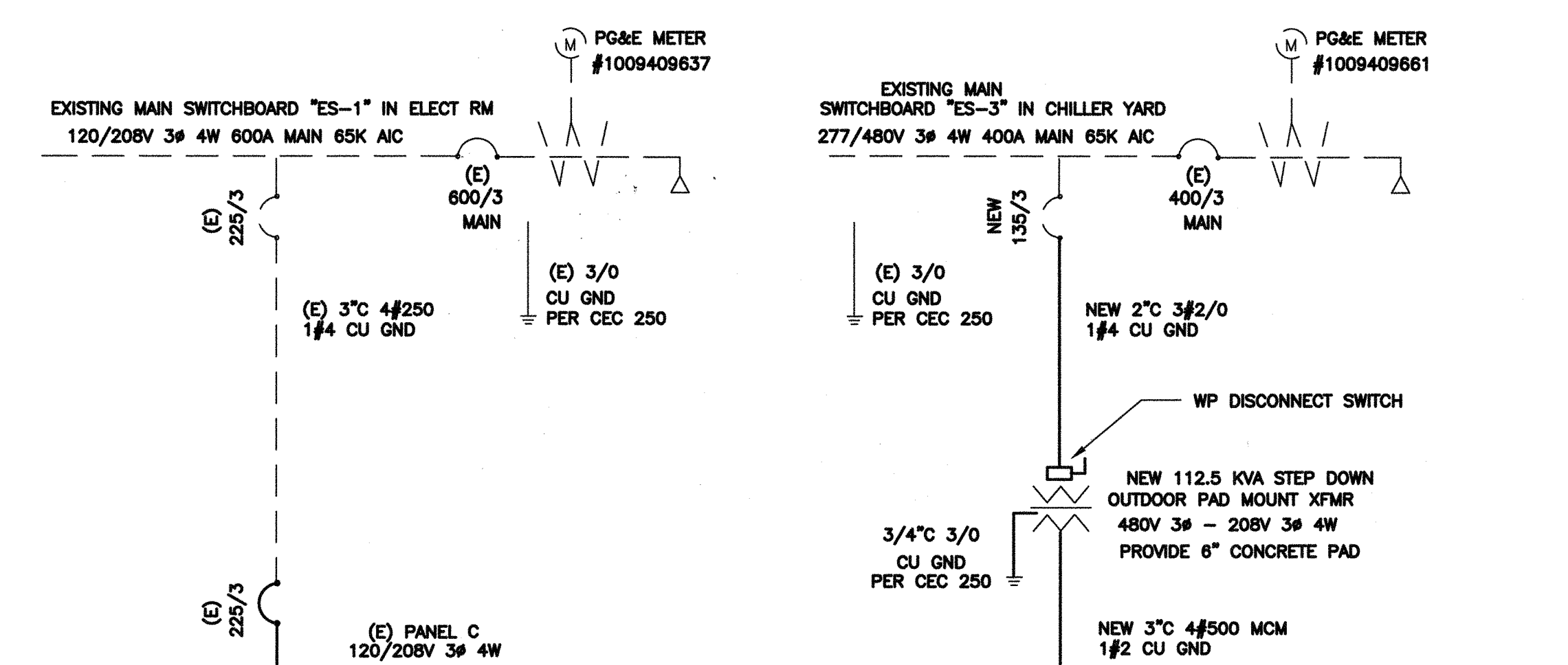
5 SECURITY ALARM SYSTEM RISER DIAGRAM
 N.T.S.



2 PA/IC/TELE SYSTEM RISER DIAGRAM
 N.T.S.

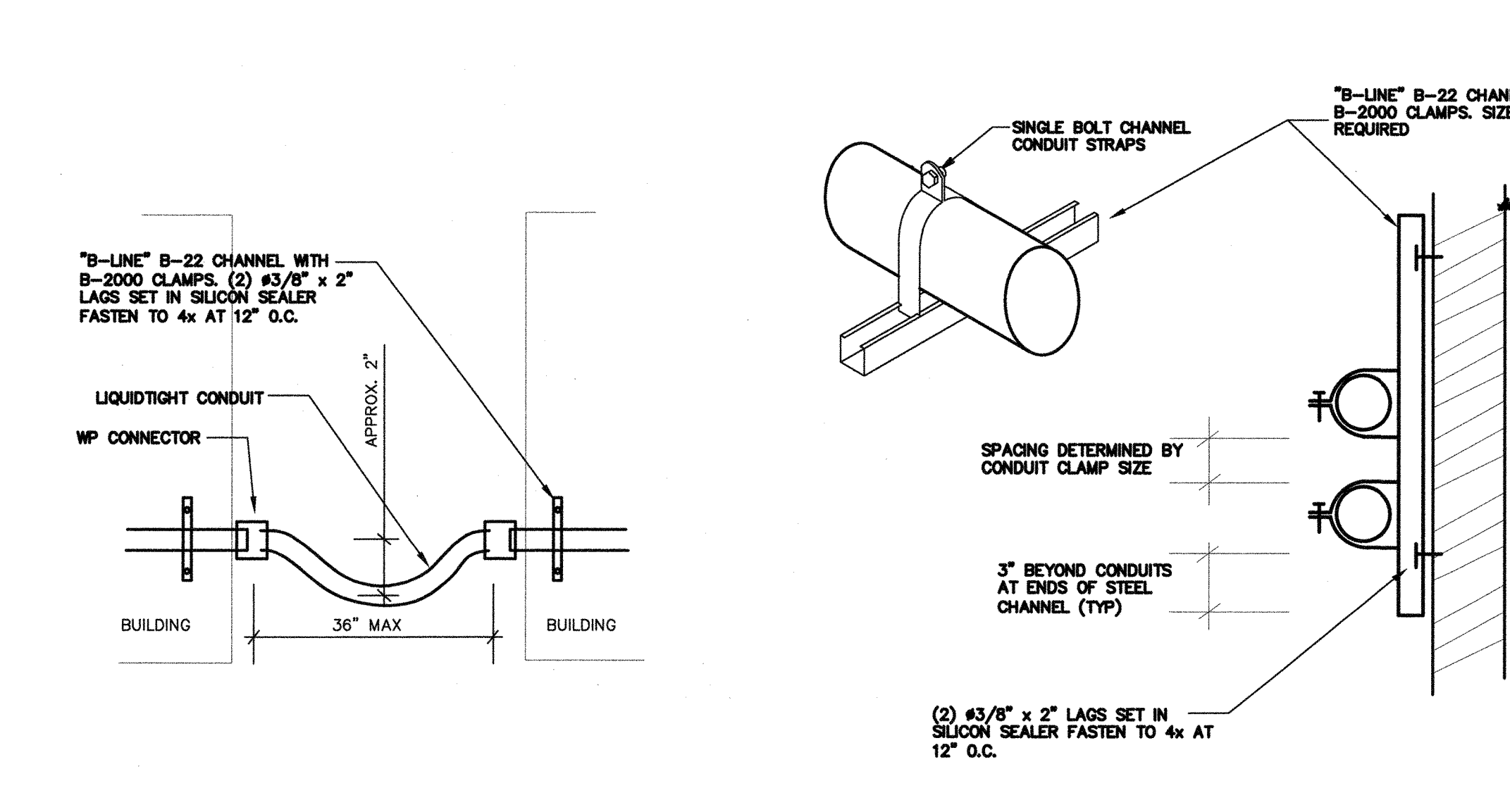


4 PULL BOX AT OPEN YARD DETAIL
 N.T.S.

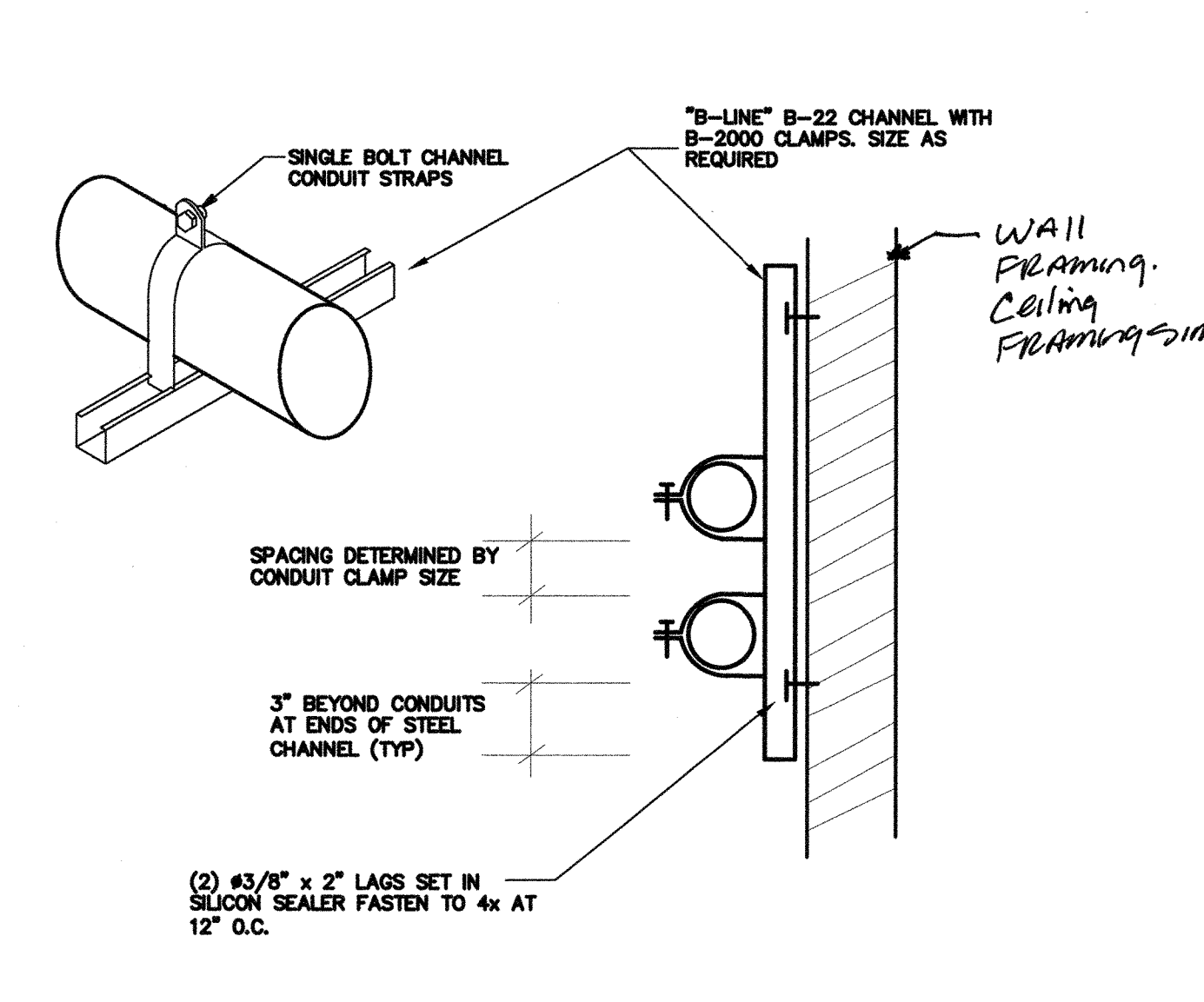


- NOTES:**
1. PROVIDE NEW MATCHING BREAKERS, FEEDERS AND PANELS PER PLANS.
 2. ALL NEW CONDUCTOR SHALL BE 75°C THWN-2 COPPER IN CONDUIT. (AMPACITY FOR CONDUCTOR SELECTION MUST BE DETERMINED/DERATED BY THE ALLOWED TERMINATION RATINGS MARKED/APPROVED ON EACH DEVICES, MOTOR, APPLIANCE, XFMR O.C.P.C. PANEL, ETC. CONDUCTORS INSTALLED IN U.G OR WET LOCATIONS SHALL BE MARKER 'W'. PER 2013 CEC 110-14(C)(1)).
 3. ALL WIRING OVER 100 VOLT SHALL BE INSTALLED IN RACEWAY CONDUIT, EMT ABOVE GRADE, PVC SCH. 40 BELOW GRAD AND STEEL CONDUIT ON EXPOSE SURFACE BELOW 8' AFF. FOR PHYSICAL PROTECTION.
 4. MC CABLE WITH SEPARATE GROUND CONDUCTOR CAN BE USED IN CEILING AND CONCEAL IN WALL.
 5. STEEL BACK BOX SHALL BE PROVIDE FOR ALL NEW ELECTRICAL DEVICES SUCH AS SWITCH, OUTLET AND CONDUCTOR SPLICE.
 6. ELECTRICAL CONTRACTOR IS RESPONSIBLE TO VERIFY THE EXISTING SWITCHBOARD AND PANELS ARE INSTALL PER ONE LINE DIAGRAM PRIOR TO WORKING, AND REPORT TO ENGINEERS IF ANY DISCREPANCY ARE FOUND.

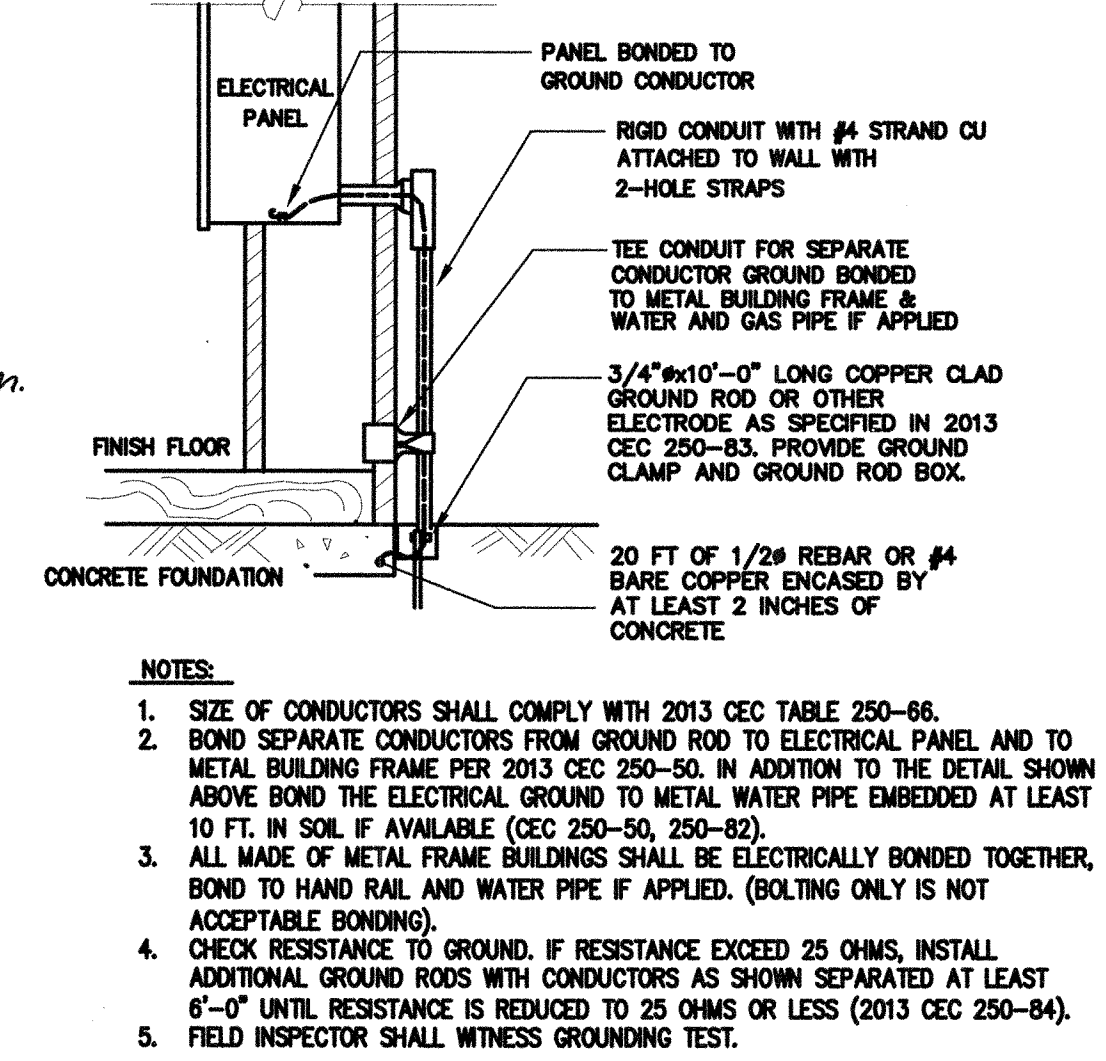
1 SINGLE LINE DIAGRAM
 N.T.S.



8 FLEX CONDUIT SUPPORT DETAIL
 N.T.S.



6 CONDUIT SUPPORT DETAIL
 N.T.S.



3 GROUNDING DETAIL
 N.T.S.

Ownership of Documents
 This document, the ideas and designs incorporated herein, as an instrument of Professional Service is the property of Integrated Design by SOMAM Inc. and is not to be used, in whole or in part for any other project without written authorization.
 © COPYRIGHT 2013

integrated designs by SOMAM, Inc.
 ARCHITECTURE - ENGINEERING - INTERIOR DESIGN - CONSTRUCTION MANAGEMENT
 6011 N. Fresno, Suite 130 - Fresno, California 93710
 Phone (559) 438-0881 For (559) 438-0887 E-Mail: design@somam.com
 www.integrateddesign.com

Rev. No.	Date	Description

DETAILS AND SYSTEM DIAGRAMS

WAYSIDE ELEMENTARY SCHOOL
 3 RELOCATABLE CLRM 1 TOILET
 BAKERSFIELD CITY SCHOOL DISTRICT
 1000 MING AVE., BAKERSFIELD, CA

Project Name & Address
 Designer: J CHONG
 Date: 05/27/14
 Issue Date: 00/00/14
 Agency Approval Stamp:
 Stamp(s):
 IDENTIFICATION STAMP
 DIV. OF THE STATE ARCHITECT
 117287
 AC/INT. F. H. H. S. S. S.
 DATE: 02-29-12

Job No.: 5204
 Sheet No.: E-4
 Release:

CONSULTING ENGINEERS
 JOHN CHONG ENGINEERING
 1021 E. DECATUR AVE. FRESNO CA 93710
 (559) 215-2200 • FAX 251-2401
 jchong@eol.com

REGISTERED PROFESSIONAL ENGINEER
 JOHN S. CHONG
 E 14419
 Exp. 6/30/2016
 ELECTRICAL
 STATE OF CALIFORNIA