

ELECTRICAL PANEL SCHEDULE

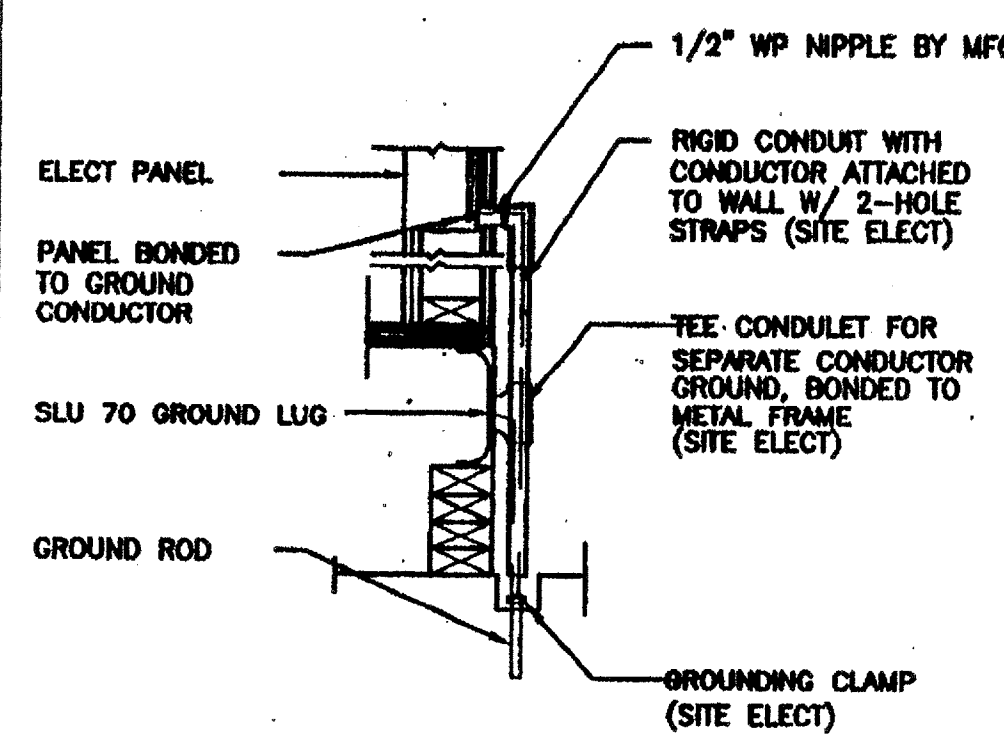
LOAD	WATTS		BREAKER				WATTS		LOAD	
	A#	B#	Amps	P	Q	R	A#	B#		
RECEPTACLE	720	20	1	1	2	2	60	7080	HVAC (3 1/2T)	
RECEPTACLE/CLOCK	720	20	1	3	4	-	-	7080	HVAC (3 1/2T)	
INT/EXT LIGHTS	900	20	1	9	10	-	-	-	-	
INT. LIGHTS	840	20	1	11	12	-	-	40	FIRE ALARM (DEDICATED)	
WATTS/PHASE	A = 8700	1620	1560	-	-	-	-	7080	7120	B = 8680
TOTAL	17380	WATTS	72	AMPS	120/240	VOLTS	SINGLE #	THREE	WIRE	

GENERAL GROUNDING NOTES

- EACH BUILDING SHALL BE SEPARATELY GROUNDING WITH A 3/4" RD. X 8' COPPER/CLAD STEEL GROUND ROD, WHERE ROCK BOTTOM IS ENCOUNTERED, ROD SHALL BE DRIVEN AT AN ANGLE NOT TO EXCEED 45 DEGREE'S FROM THE VERTICAL OR SHALL BE BURIED IN A TRENCH THAT IS AT LEAST 30" DEEP (BY SITE ELECTRICAL).
- TESTING: TEST FOR RESISTANCE TO GROUND. IF RESISTANCE EXCEEDS 25 OHMS, INSTALL ADDITIONAL GROUND RODS SEPARATED AT LEAST 6'-0" UNTIL RESISTANCE IS REDUCED TO 25 OHMS OR LESS. (BY SITE ELECTRICAL.)
- APPROVAL OF THIS PLAN DOES NOT CONSTITUTE APPROVAL OF THIS FIRE ALARM FOR ALL SITES. THE FIRE ALARM SYSTEM AND/OR COMPONENTS MAYBE REQUIRED TO BE CHANGED DUE TO SITE LOCATION, EXISTING CONDITIONS OR INCOMPATIBLE COMPONENTS.
- GROUND MG TEST SHALL BE DONE IN THE PRESENCE OF THE PROJECT INSPECTOR. ALL GROUNDING SHALL BE IN ACCORDANCE WITH CEC ARTICLE 250.

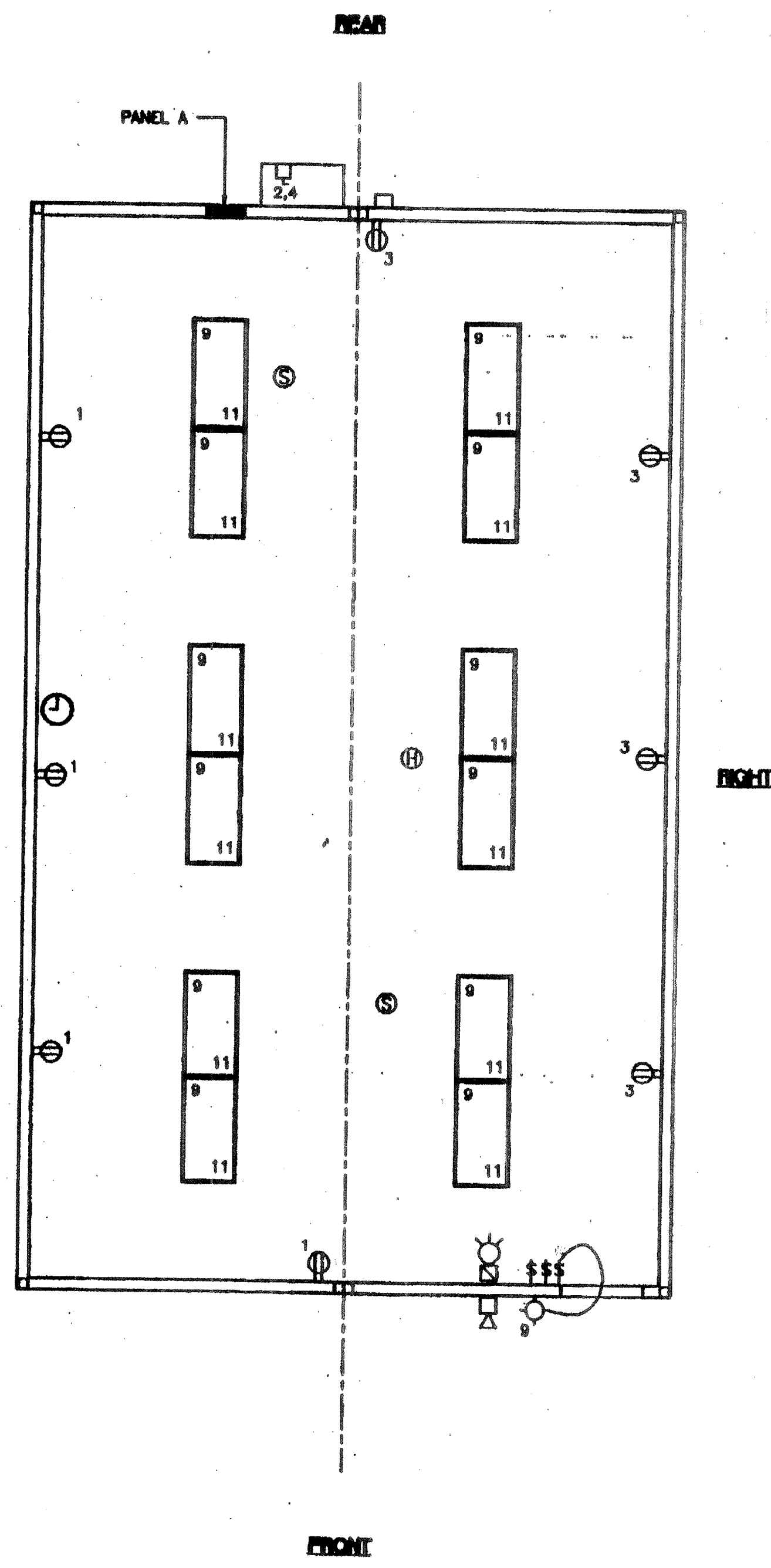
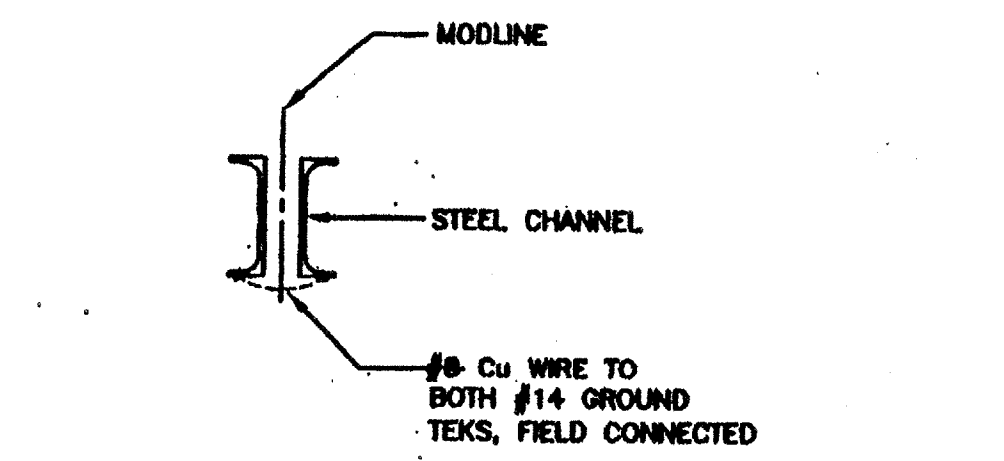
ELECTRICAL LEGEND

- 2'x4' TB LIGHTS W/ELECT. BALLAST
- EXTERIOR LIGHT FIXTURE AT +03" AFF
- SWITCH AT +48" AFF
- SWITCH AT +48" AFF FOR EXT. LIGHT
- DUPLEX WALL RECEPTACLE 15A 125V 3-WIRE AT +18" AFF UON
- HVAC UNIT (HV)
- 4SD J-BOX FOR FIRE ALARM PULL STATION AT +48" AFF, 3/4" CO TO PULLSTRING
- 4SD J-BOX FOR FIRE ALARM STROBE/HORN AT +80" TO TO BOTTOM OF DEVICE AFF. 3/4" CO TO PULLSTRING
- 4SD J-BOX FOR FIRE ALARM HORN AT +98" AFF 3/4" CO TO PULLSTRING
- WEATHER PROOF CUTTER BOX (6"x8"x4") AT +18" AFF RECEIVE 3/4" CO FROM FA DEVICE, PULLSTRING
- ELECTRICAL PANEL AT +80" AFF TO CENTERLINE 1 1/4" POWER NIPPLE POC, GND JUMPER BY SITE ELECT
- CLOCK AT +90" AFF
- 4SD J-BOX FOR HEAT DETECTOR (ATTIC) * MAX 25' FROM ANY WALL AND 30' BETWEEN THEM.
- 4SD J-BOX FOR SMOKE DETECTOR (FRAME) * MAX 15' FROM ANY WALL AND 30' BETWEEN THEM.
- 2 GANG J-BOX AT 18" w/ CONDUIT STUBBED UP TO ATTIC SPACE.



TYP GROUNDING DETAIL 1

GROUND JUMPER • MOD LINE 2



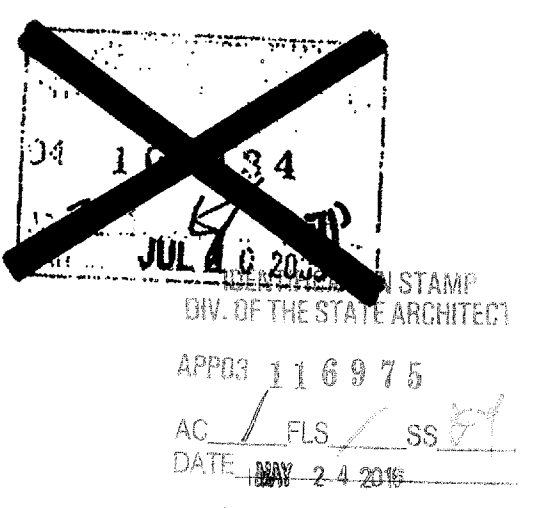
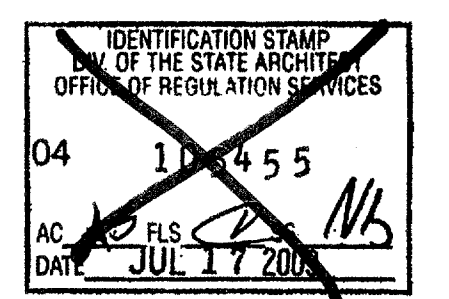
ELECTRICAL PLAN OPP-HAND (24'x40')
SCALE: 1/4" = 1'-0"

NOTES

- SCHOOL EQUIPMENT ANCHORAGE
THE FOLLOWING IS FOR THE ARCHITECTS INFORMATION ONLY:
THE SEISMIC ANCHORAGE OF ELECTRICAL EQUIPMENT SHALL CONFORM TO CGR TITLE 24, SECTION 1832A AND TABLE 18A-0. ANCHORAGE DETAILS FOR ROOF/FLOOR MOUNTED EQUIPMENT WEIGHING LESS THAN 400 LBS & HUNG EQUIPMENT WEIGHING LESS THAN 20 LBS MAY BE OMITTED FROM THE PLANS.
FOR ELECTRICAL DRAWINGS:
ALL ELECTRICAL EQUIPMENT SHALL BE BRACED OR ANCHORED TO RESIST A HORIZONTAL FORCE ACTING IN ANY DIRECTION USING THE FOLLOWING CRITERIA:

EQUIPMENT ON GRADE	33% OF OPERATING WEIGHT
EQUIPMENT ON STRUCTURE	40% OF OPERATING WEIGHT

FOR FLEXIBLY MOUNTED EQUIPMENT USE 4 TIMES THE ABOVE VALUES, AND FOR SIMULTANEOUS VERTICAL FORCE USE 1/3 TIMES THE HORIZONTAL FORCE.
THE ABOVE VALUES ARE FOR AN IMPORTANCE FACTOR, I = 1.0 AND SEISMIC ZONE, Z = 4
WHERE ANCHORAGE DETAILS ARE NOT SHOWN ON THE DRAWINGS THE FIELD INSTALLATION SHALL BE SUBJECT TO THE APPROVAL OF THE ARCHITECT AND THE FIELD ENGINEER OF THE OFFICE OF THE STATE ARCHITECT.



REVISIONS

1		
2		
3		
4		
5		

Professional Engineer's Seal, Mechanical Engineer's Seal, PC Professional of Record Seal, Architects Seal, and various regulatory stamps including 'PC CBC 2001' and '104798'.

MODTECH INC.
2830 BARRETT AVENUE FAX (909) 943-4014
PERRIS, CALIF. 92572 FAX (909) 940-0427

PROJECT NUMBER: 4736
WILLIAM SCOTTSMAN
© MODTECH, INC. 2002 ALL RIGHTS RESERVED

ELECTRICAL PLAN W/O DATA

DRAWN BY: CL
DATE: 07/07/03
CHECKED BY:
DATE:
E1.03

FILE PATH: PROJECT NO. 4736 PC-04-104798