

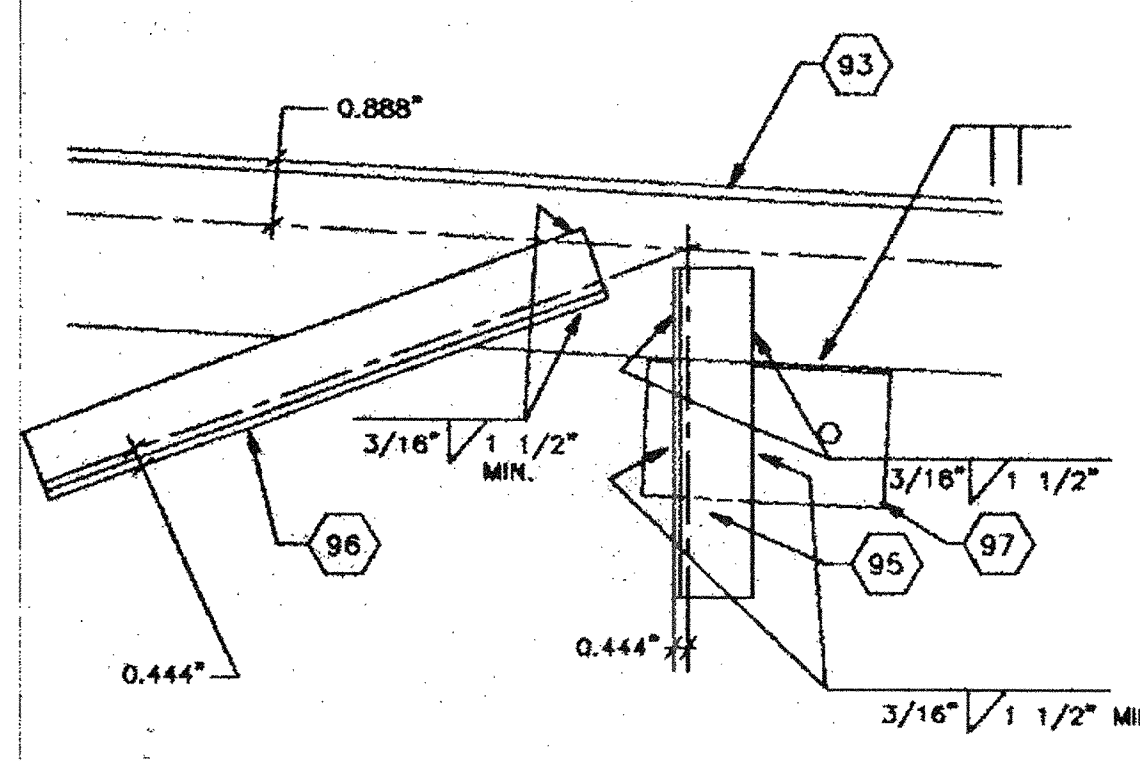
TRUSS ELEVATION

CAMBER TRUSS 1/2" @ MIDSPAN

A

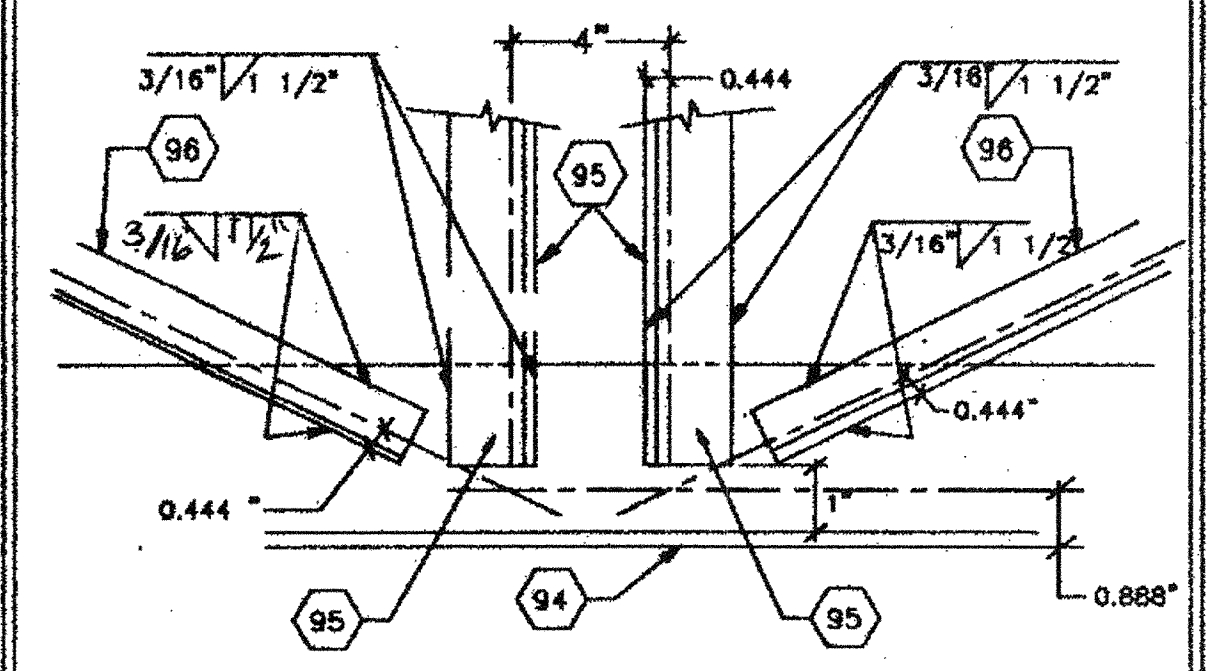
KEYNOTES

- 4. 3 1/2"x3 1/2"x3/16" STEEL TUBE
- 6. 5/8" MACHINE BOLT FOR MODULE CONNECTION
- 7. 1/4" CAP PLATE
- 71. ROOF JOIST
- 93. < 3"x3"x3/8" TOP CHORD.
- 94. < 3"x3"x3/8" 1/2" CHAMBER AT MIDPOINT
- 95. < 1 1/2"x1 1/2"x3/16" VERTICAL MEMBER
- 96. < 1 1/2"x1 1/2"x3/16" DIAGONAL MEMBER TYP.
- 97. 3/8"x3"x1/2" PLATE WITH 11/16" HOLE FOR 5/8" MACHINE BOLT LOCATE PLATES @ 8'-0" O.C. FOR MODULE CONNECTION. SEE DETAIL '8.
- 98. 1 1/2"x1 1/2"x3/16" BRACE @ EVERY OTHER JOIST
- 99. 1 1/2"x1 1/2"x3/16" END DIAGONAL (WITH 4" OF 3/16" FILLET WELD EACH END)



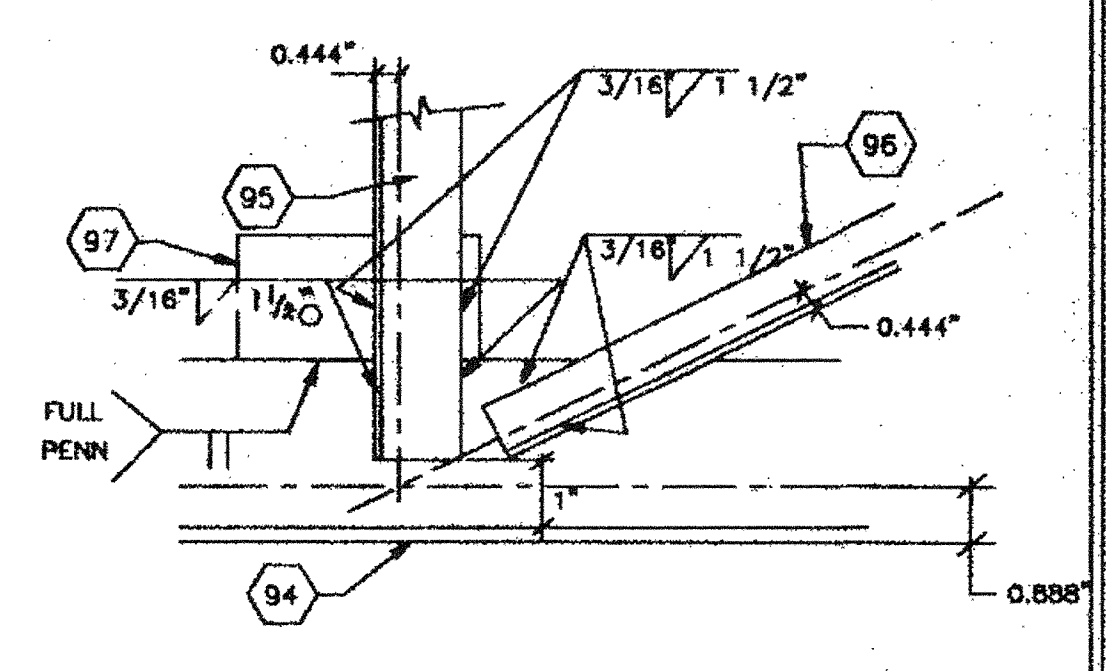
VERT. & DIAG. TOP CHORD

1



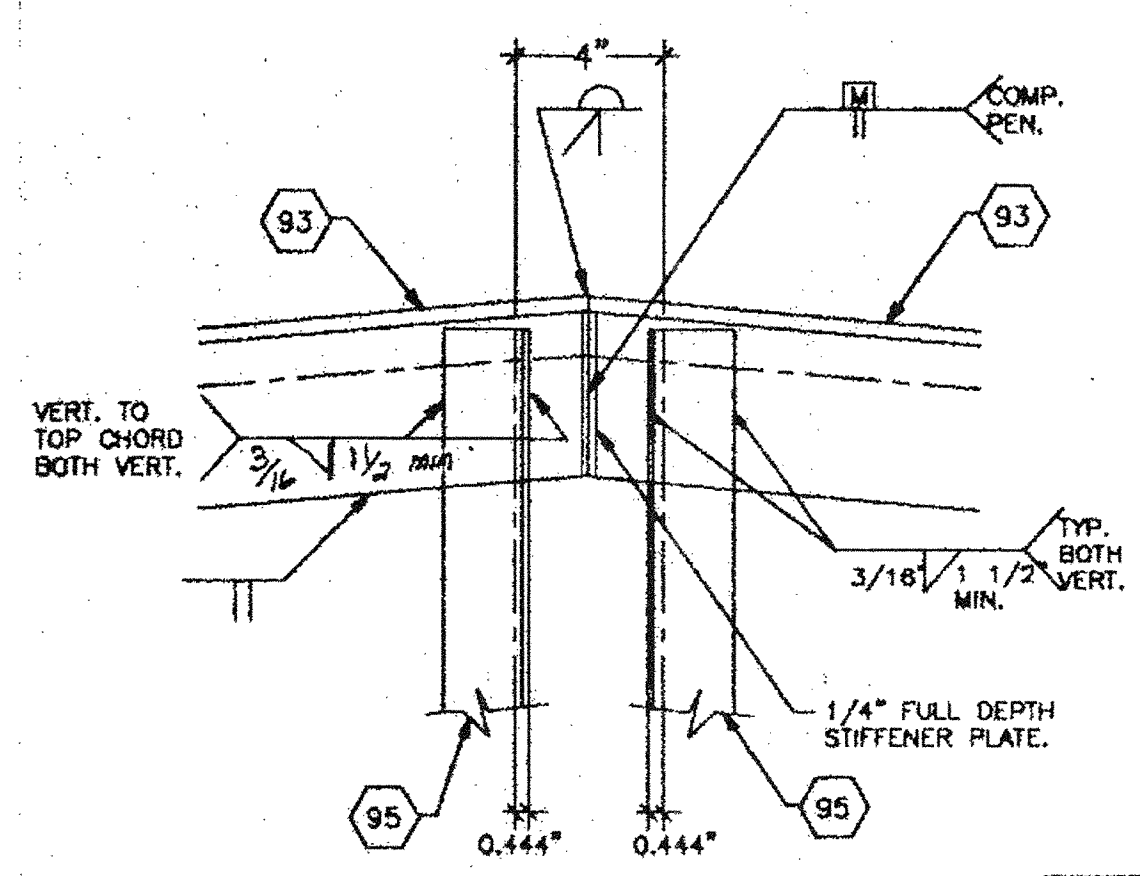
BOTTOM CHORD AT MIDSPAN

2



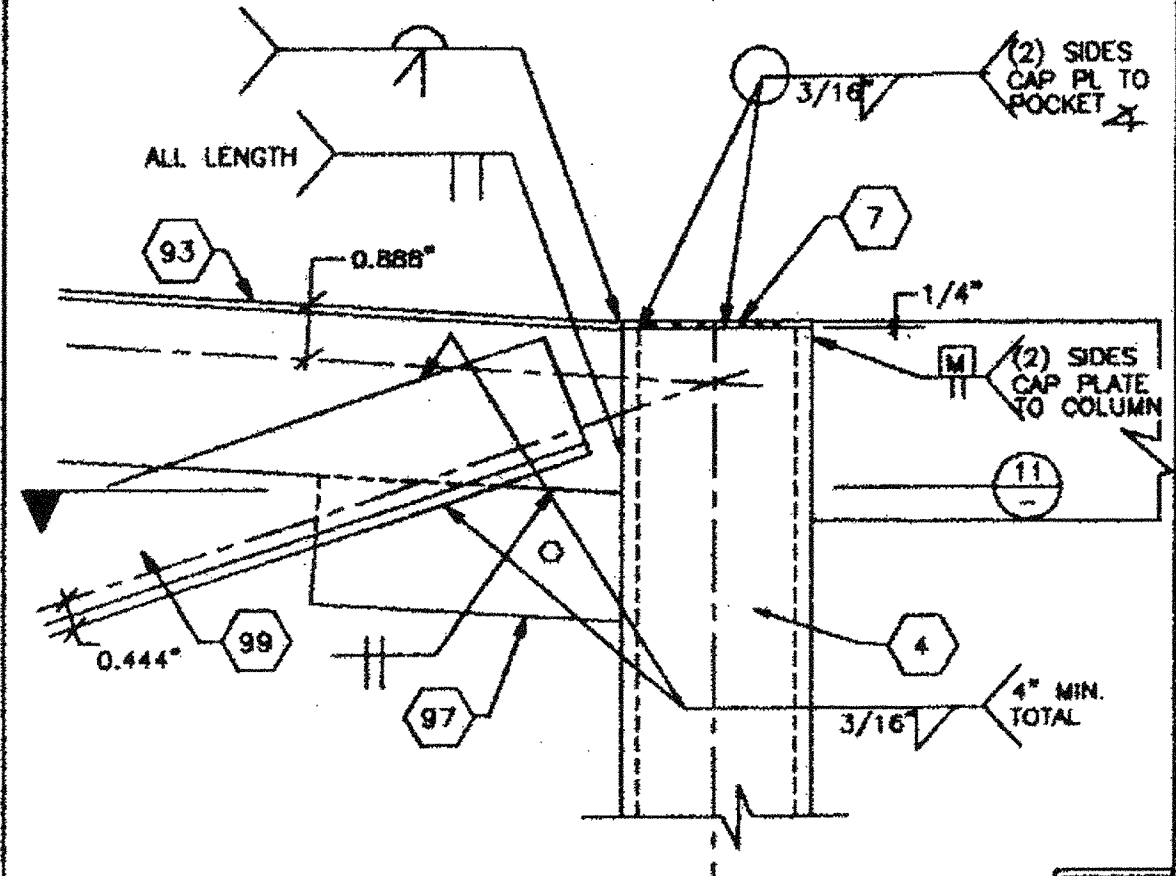
VERT & DIAG TO BOTTOM CHORD

3



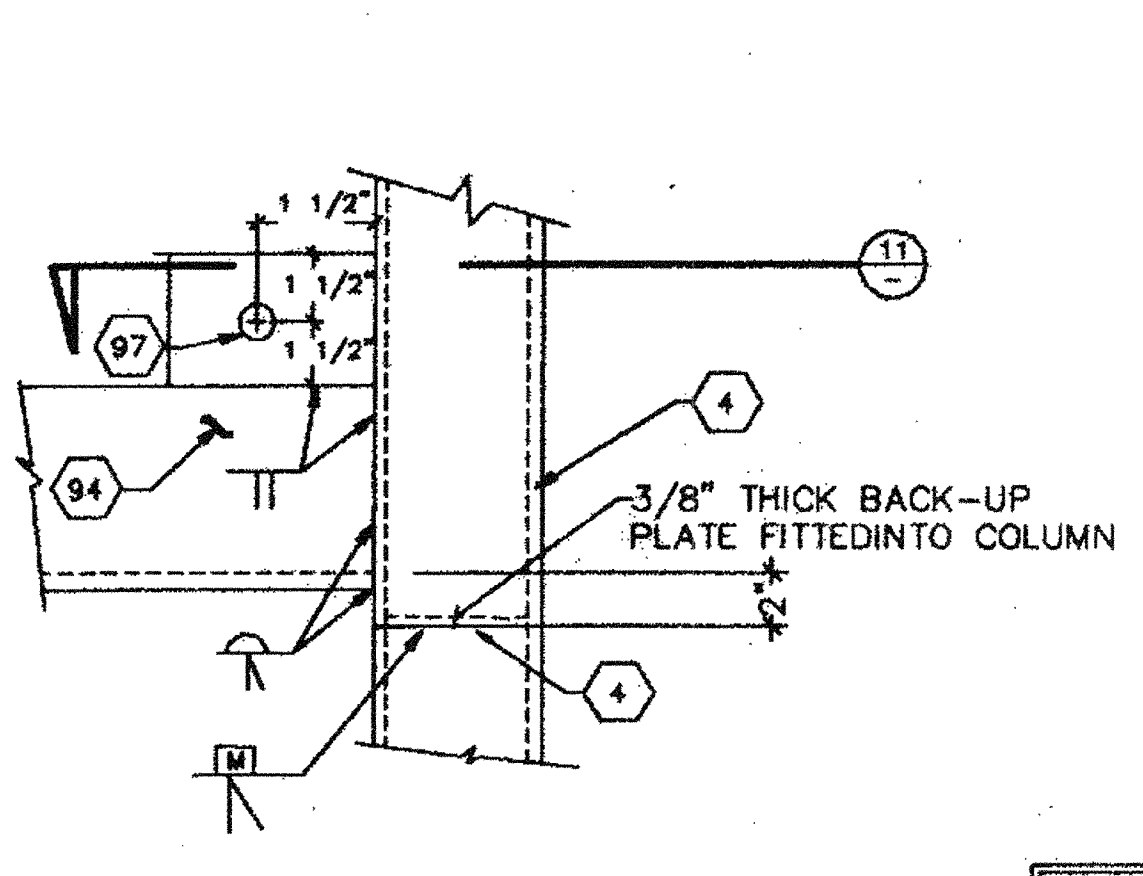
TOP CHORD AT MIDPOINT

4



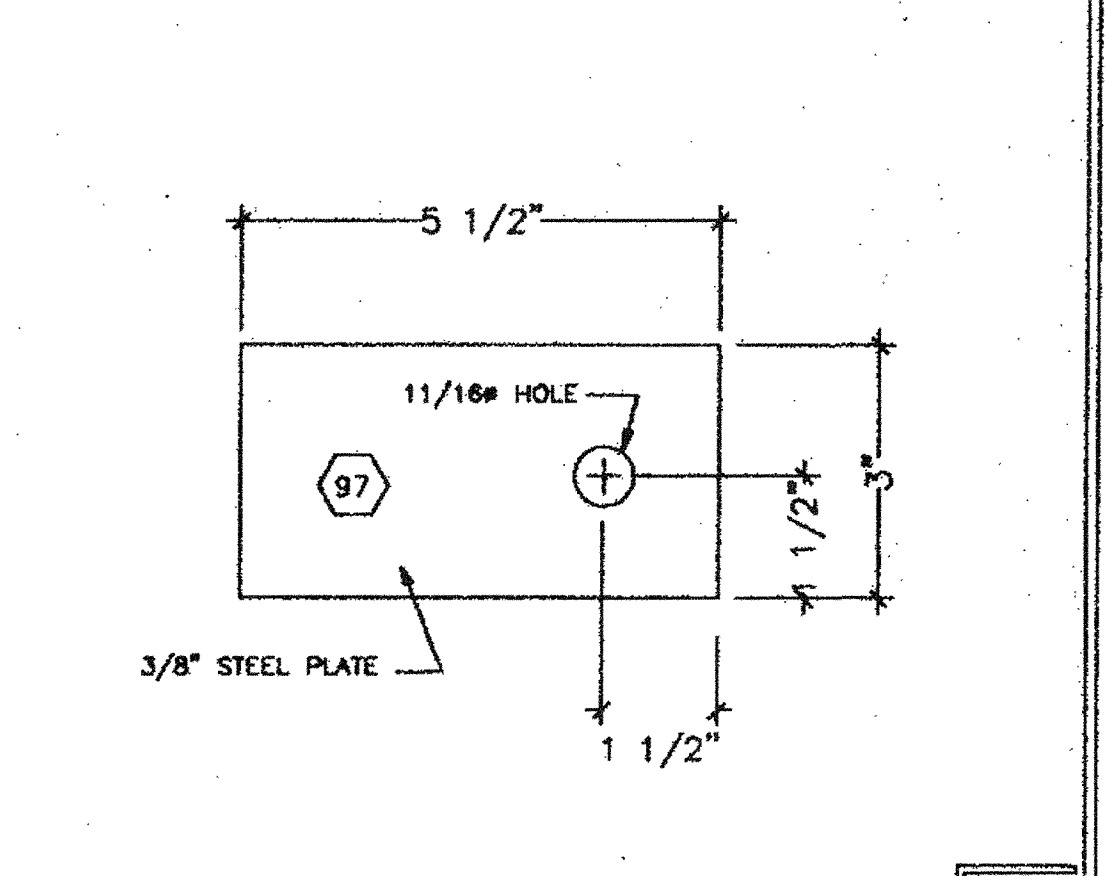
POST CONN TO TRUSS

5



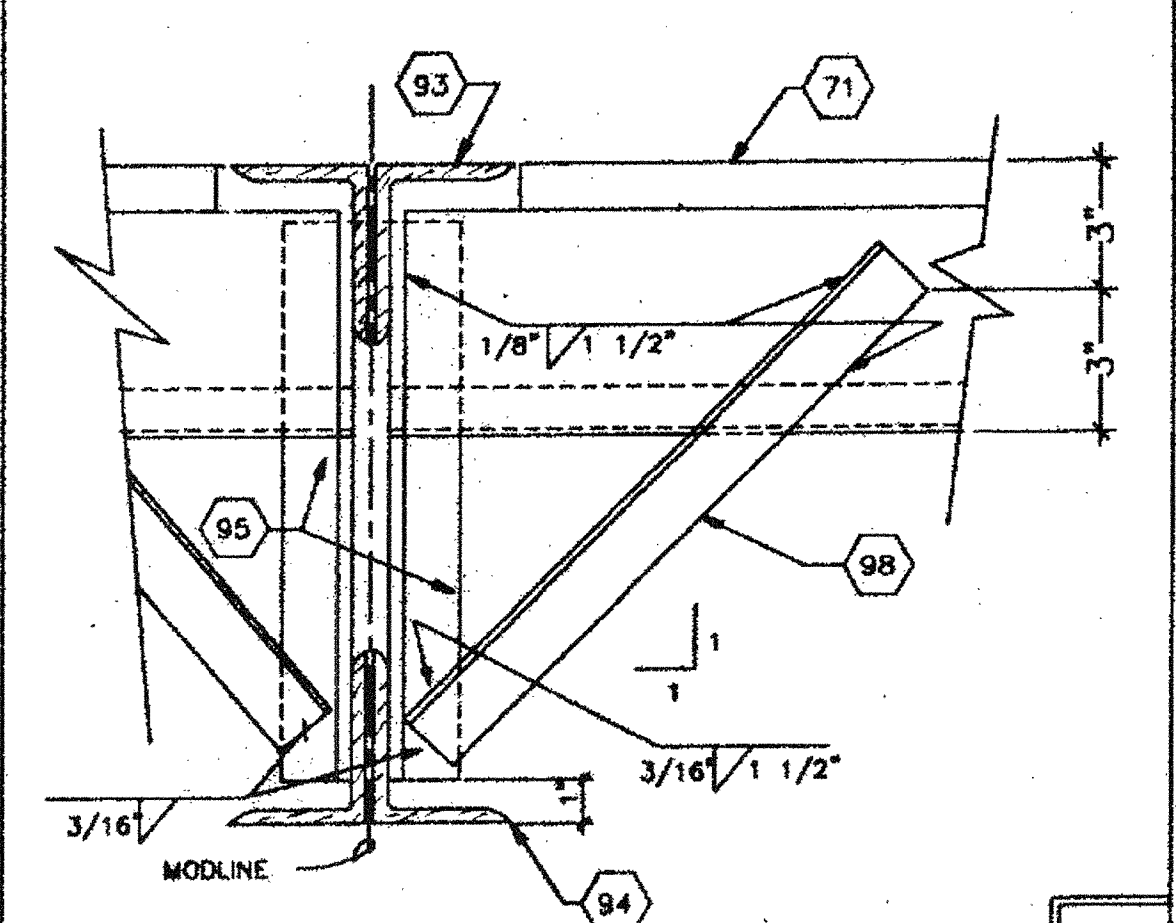
POST CONN TO TRUSS

6



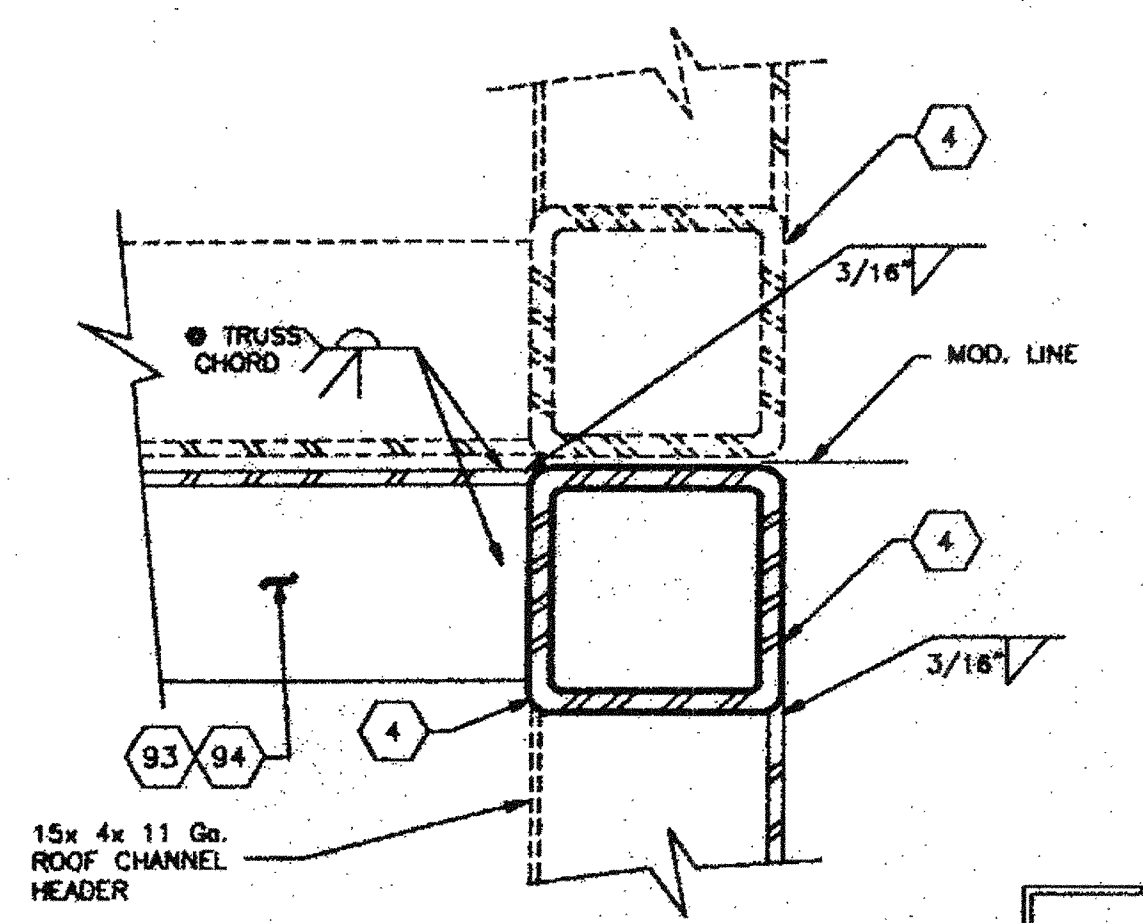
TIE PLATES

7



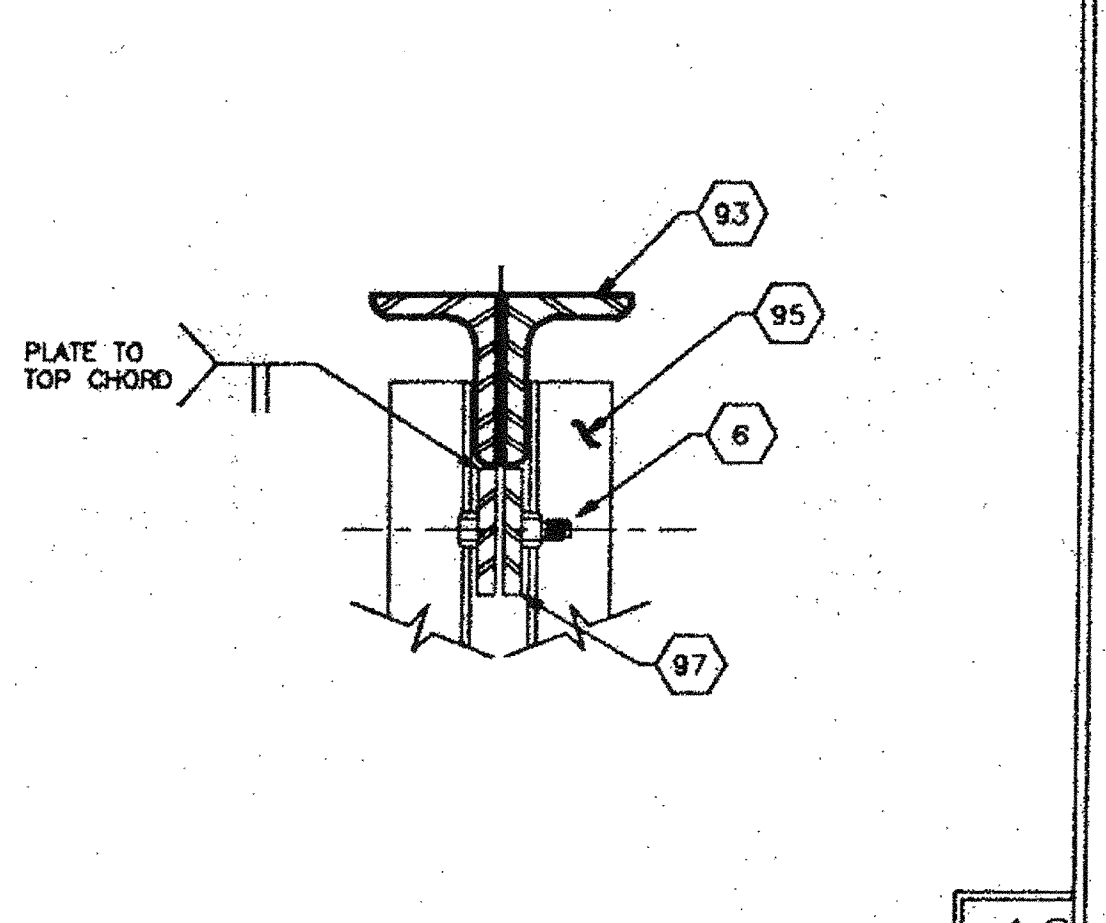
TRUSS TO ROOF JOIST BRACING

8



MODULE CONN AT TOP/BOT. CORD

9



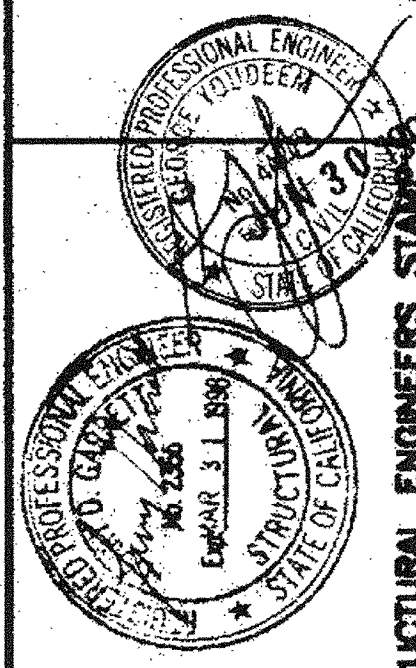
MODULE CONNECTION

10

THIS DRAWING AND THE MATERIAL CONTAINED THEREIN ARE THE PROPERTY OF M.S.I. INC. AND SHALL NOT BE USED IN WHOLE OR IN PART TO ASSIST IN THE MANUFACTURE OF PARTS THEREOF WITHOUT THE WRITTEN PERMISSION OF M.S.I. INC. THE MATERIAL CONTAINED HEREIN AND ORIGINATING WITH M.S.I. INC. SHALL BE USED IN THE PROJECT ORIGINATING WITH M.S.I. INC. SHALL BE THE PROPERTY OF M.S.I. INC.

MSI
MODULAR STRUCTURES INTERNATIONAL, INC.
 1000 S. GARDEN AVENUE, SUITE 100
 IRVINE, CA 92714-2883
 TEL: (714) 261-3333 FAX: (714) 261-1033

PC-323



REGENCY ENGINEERING & CONSULTING GROUP
 1000 S. GARDEN AVENUE, SUITE # 100
 IRVINE, CA 92714-2883
 TELEPHONE: (714) 261-3700
 FAX: (714) 261-3705
 A SUBSIDIARY OF REGENCY COMPANY, INC.

STATE AGENCY APPROVAL
 JUN 20 2016

PROJECT
 24'X40', 36'X40' & 48'X40'
 MODULAR CLASSROOM BUILDING

TITLE
 STEEL TRUSS SECTION DETAILS,
 FOR DOUBLE PITCH ROOF

STATE AGENCY APPROVAL
 JUN 17 1997

JOB # 96-1310
DATE 12/9/96
DRAWN BY B.N.
SCALE NONE
APPROVED

STATE AGENCY APPROVAL
 APR 24 1997

REVISIONS
 2/4/97
 4/25/97 MSI REV.

PLOT DATE: 04/28/97
SHEET NO.
S-70