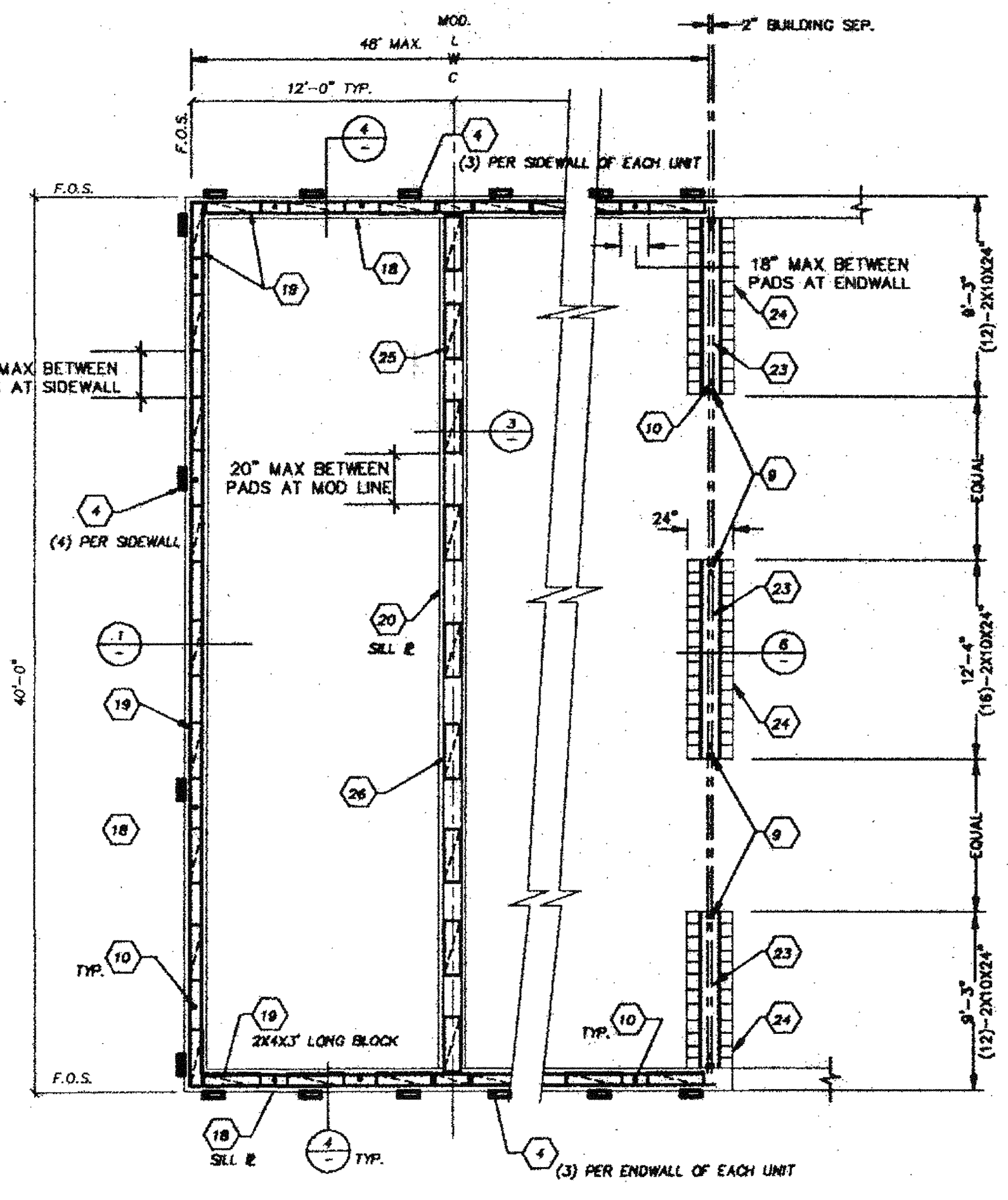


50 P.S.F. AND 50+20 P.S.F. FLOOR LIVE LOAD
SOIL PRESSURE: 1000 PSF

1 MULTI-WIDE FOUNDATION PLAN

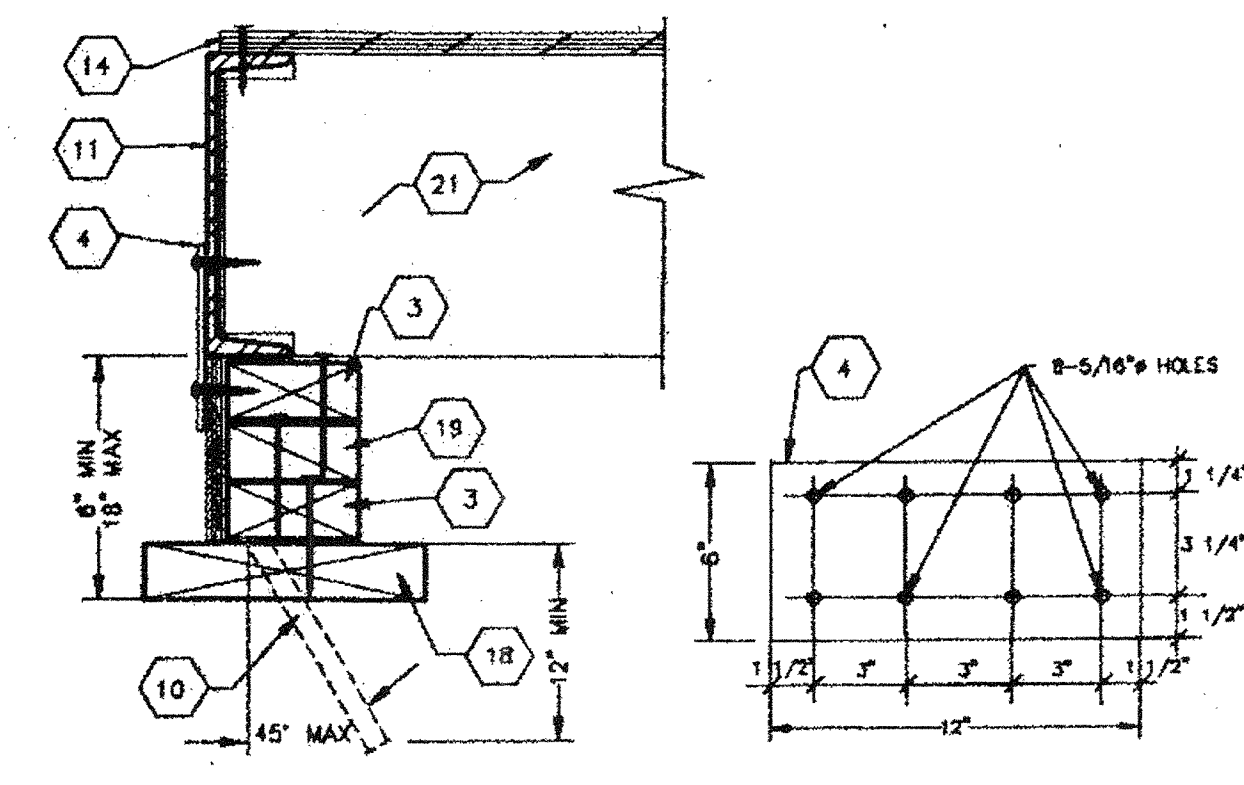


50 P.S.F. AND 50+20 P.S.F. FLOOR LIVE LOAD
SOIL PRESSURE: 1000 PSF

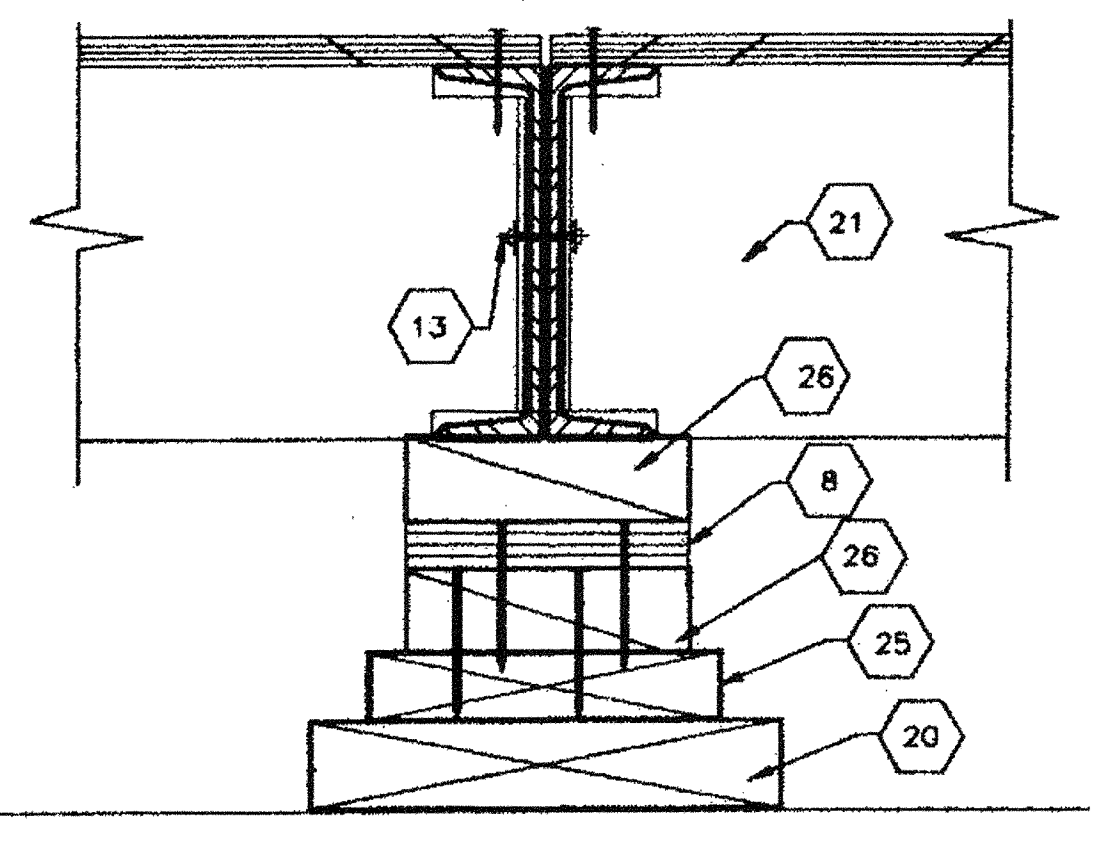
1 FOUNDATION PLAN @ ADJACENT BUILDING

KEYNOTES

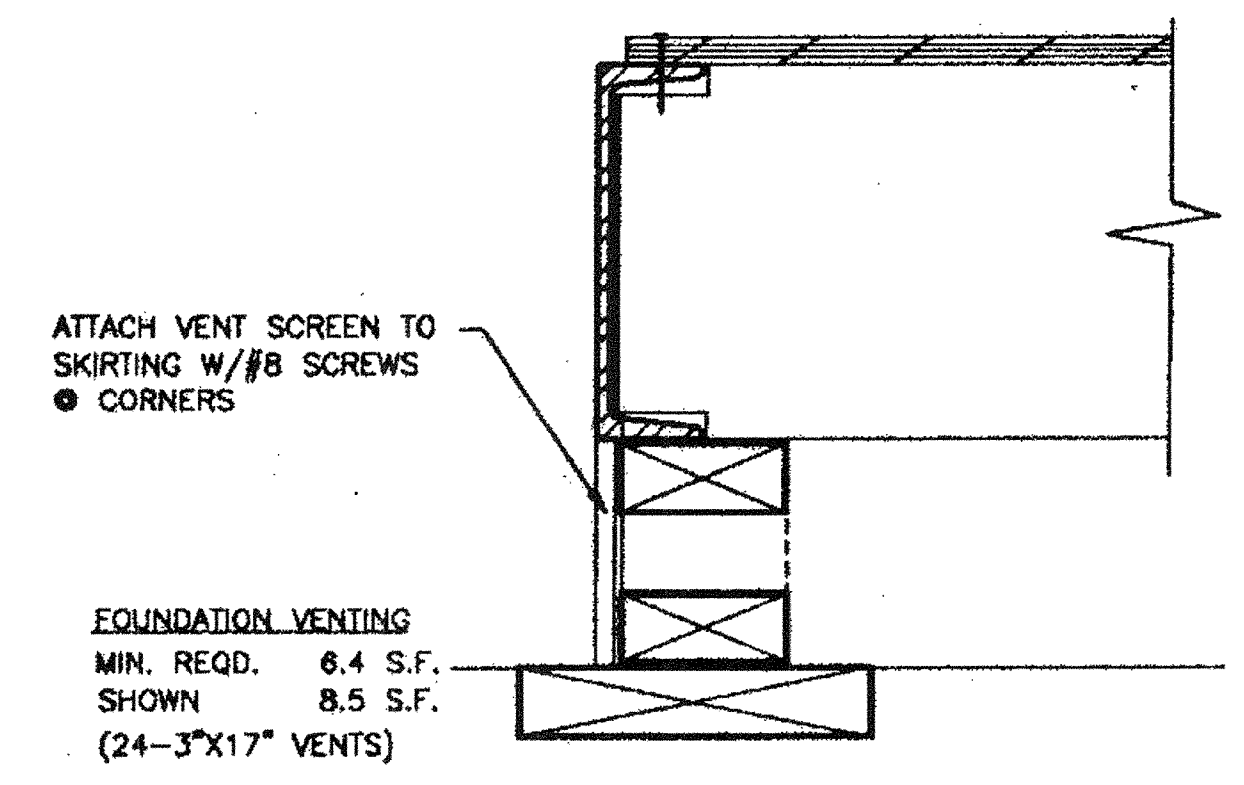
1. MAXIMUM SOIL BEARING PRESSURE - 1000 PSF.
2. ALL FOUNDATION LUMBER SHALL BE H.F. #2. ALL LUMBER IN CONTACT WITH GRADE SHALL BE STAMPED "FOR GRAD CONTACT". ALL FOUNDATION NAILS SHALL BE CORROSION RESISTANT PER U.L.C. STANDARD 25. 1717.
3. 2X CONTINUOUS, INTERNAL TO EACH PAD WITH 16d BOX NAILS @ 5" O.C. STAGGERED.
4. THE PLATE - 12"x6" X 10G. PLATE W/ (8) 5/16" HOLES AS SHOWN FOR (4) 1/4" X 3/4" LONG SELF TAP SCREWS INTO CHANNEL & (4) 1/4" X 3" LAG BOLTS.
5. 5/8" PLYWOOD PERIMETER SKIRTING, NAIL TO FOUNDATION PADS WITH 8d BOX NAILS @ 12" O.C. TOP AND BOTTOM.
6. NOT USED.
7. TAPERED SHIMS - NAIL TO FOUNDATION PADS WITH 16d BOX NAILS @ 12" O.C. NAIL 2X12 FOUNDATION PLATE TO TAPERED SHIMS WITH 16d BOX NAILS @ 12" O.C. STAGGERED ALONG EACH TAPERED SHIM.
8. PLYWOOD OR WOOD SHIM - MIN. 8" LONG, MAX. 16" BETWEEN SHIMS, NAIL TO PLATES WITH MIN. (3) 16d BOX NAILS PER SHIM MAX. 1-1/2" SHIM HEIGHT AT ANY LOCATION.
9. 1 1/16" HOLE IN PURLIN FOR 5/8" X 4" LAG BOLT AT 4'-0" O.C.
10. DRIVE 1" DIA. X 15" G.I. PIPE @ 10'-0" O.C. MAX. DRILL SILL PLATE 1-1/4" MAX. PIPE MAY BE DRIVEN AT MAX. 45 ANGLE TO VERTICAL.
11. STEEL FLOOR CHANNEL.
13. 5/8" MACHINE BOLT @ MODULE CONNECTION.
14. PLYWOOD FLOOR DECK, ATTACH PLYWOOD FLOORING TO STEEL CHANNEL WITH #10 X 1 1/2 S.T.S.
15. PLYWOOD STRIP - 3/4" X 3" X 8" PIECE W/ (2) #12 X 2-1/4" FLAT HEAD WOOD SCREWS EACH END.
17. NOT USED.
18. CONNECTIONS 2X10 P.T.H.F. SILL PLATE. PLATE SPLICES SHALL OCCUR AT CENTER OF 2X6 BLOCK LOCATION.
19. 2X6X 3'-0" LONG BLOCKS. NAIL BLOCKS TOGETHER WITH 16d BOX NAILS @ 4" O.C. AND (2) 16d NAILS AT EACH END.
20. CONTINUOUS 2X12 P.T.H.F. SILL PLATE. PLATE SPLICES SHALL OCCUR AT CENTER OF 2X8 BLOCK LOCATIONS.
21. FLOOR JOIST OR BLOCK BETWEEN FLOOR JOIST.
22. 2X8X CONTINUOUS, NAIL BLOCK TO SILL PLATE W/ 16d BOX NAILS AT 4" O.C. AND (2) 16d NAILS AT EACH END.
23. CONTINUOUS 2X12X(SEE PLAN), NAIL (2) 16d AT EACH END AND 12" O.C.
24. 2X10X24" LONG SILL PADS, P.T.H.F. (SEE PLANE FOR QUANTITY 10 AT ENDS & 12 AT INTERIOR)
25. CONTINUOUS 2X8 H.F. PLATE. PLATE SPLICES SHALL OCCUR AT CENTER OF 2X6 BLOCK LOCATIONS.
26. 2X6X3'-0" LONG BLOCKS. NAIL BLOCKS TOGETHER WITH 16d BOX NAILS @ 4" O.C. AND (2) 16d NAILS AT EACH END.



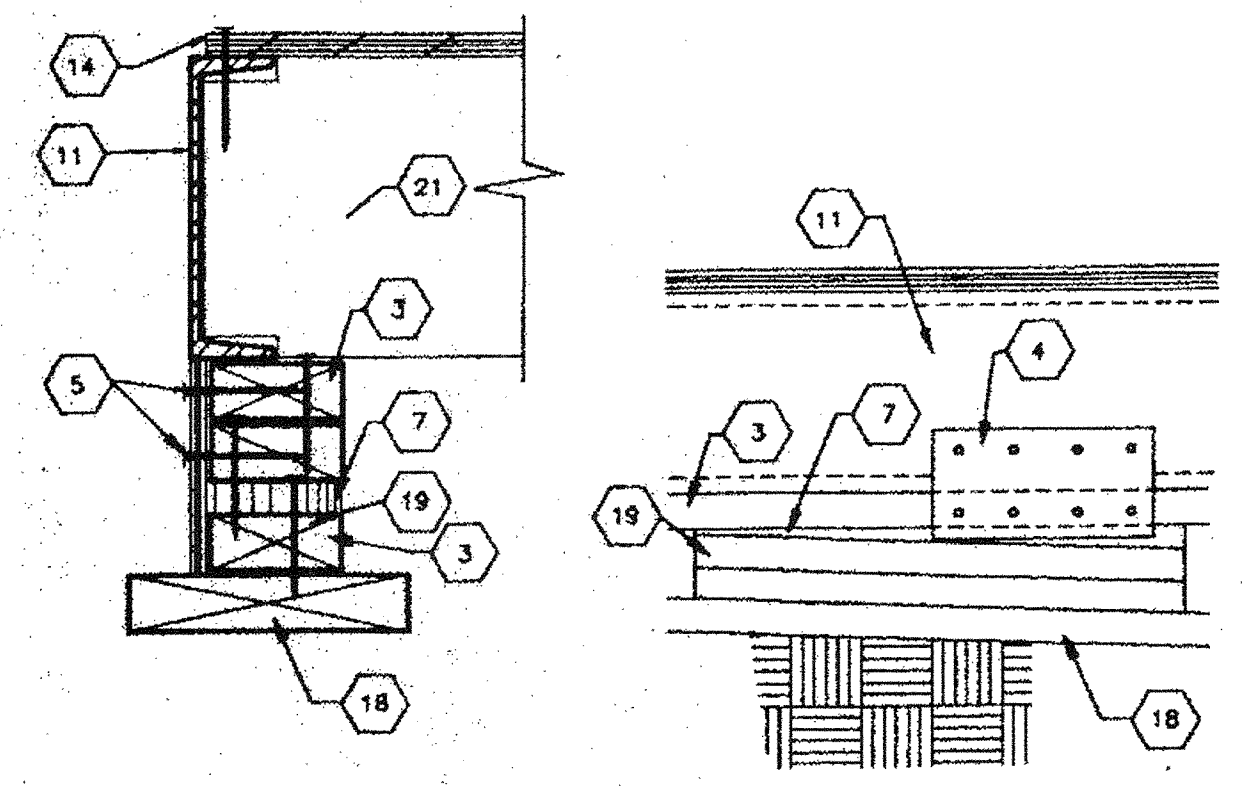
FOUNDATION AT SIDEWALL



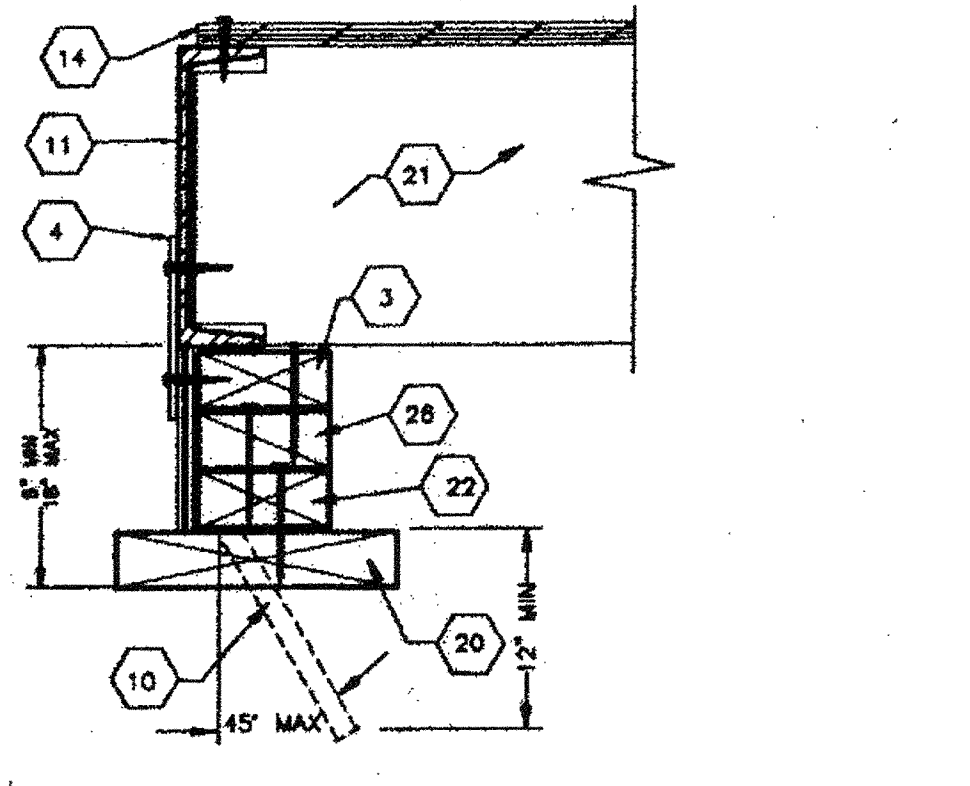
1 FOUNDATION AT MOD LINE



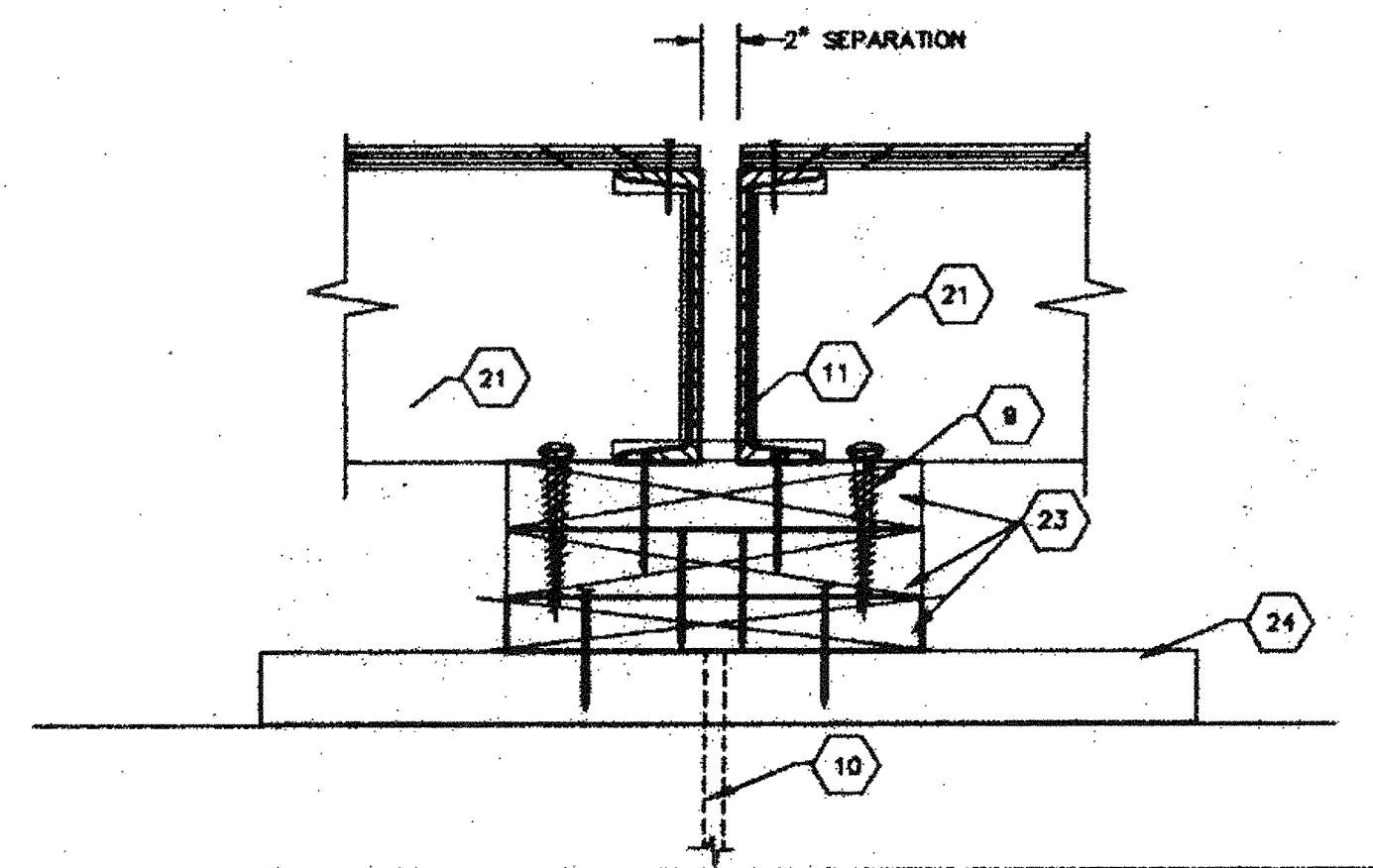
3 FOUNDATION VENTING



2 SHIMMING AND SKIRTING (SIDEWALL SHOWN)



2 FOUNDATION AT ENDWALL



4 COMMON PAD

THIS DRAWING AND THE MATERIAL CONTAINED THEREIN ARE THE PROPERTY OF M.S.I. INC. AND SHALL NOT BE REPRODUCED, COPIED OR OTHERWISE DISPOSED OF IN WHOLE OR IN PART WITHOUT THE WRITTEN CONSENT OF M.S.I. INC. ALL INFORMATION OR PARTS THEREOF WITHOUT THE FULL KNOWLEDGE AND WRITTEN CONSENT OF M.S.I. INC. IS UNLAWFUL. M.S.I. INC. SHALL BE THE PROPERTY OF M.S.I. INC. MATERIAL CONTAINED HEREIN AND ORIGINATING FROM M.S.I. INC. SHALL BE THE PROPERTY OF M.S.I. INC.

MSI
MODULAR STRUCTURES INTERNATIONAL, INC.
1800 OTTAWA AVE. WEST, OAKVILLE, ONTARIO, L6M 6Y7
PHONE: (905) 708-3000 FAX: (905) 708-1838

PROFESSIONAL ENGINEER
REGISTERED PROFESSIONAL ENGINEER
STRUCTURAL ENGINEERING
17865 VON KARMAN SUITE # 108
IRVINE, CA 92714-3989-3799
FAX: (714) 965-3795
A SUBSIDIARY OF REGENCY COMPANY, INC.

ARCHITECT APPROVAL
STRUCTURAL ENGINEERS STAMP
STATE AGENCY APPROVAL

REGENCY ENGINEERING & CONSULTING GROUP
17865 VON KARMAN SUITE # 108
IRVINE, CA 92714-3989-3799
FAX: (714) 965-3795
A SUBSIDIARY OF REGENCY COMPANY, INC.

STATE AGENCY APPROVAL
PROJECT
JUN 20 2016

STATE AGENCY APPROVAL
PROJECT
24'X40', 36'X40', & 48'X40'
MODULAR CLASSROOM BUILDING
TITLE
WOOD FOUNDATION
JOB # 96-1310

STATE AGENCY APPROVAL
DATE 12/9/96
DRAWN BY B.N.
SCALE NONE
APPROVED
REVISIONS
4/1/97
4/25/97

STATE AGENCY APPROVAL
DATE JUN 17 1997
APPROVED
PLOT DATE: 04/28/97
SHEET NO. F-1