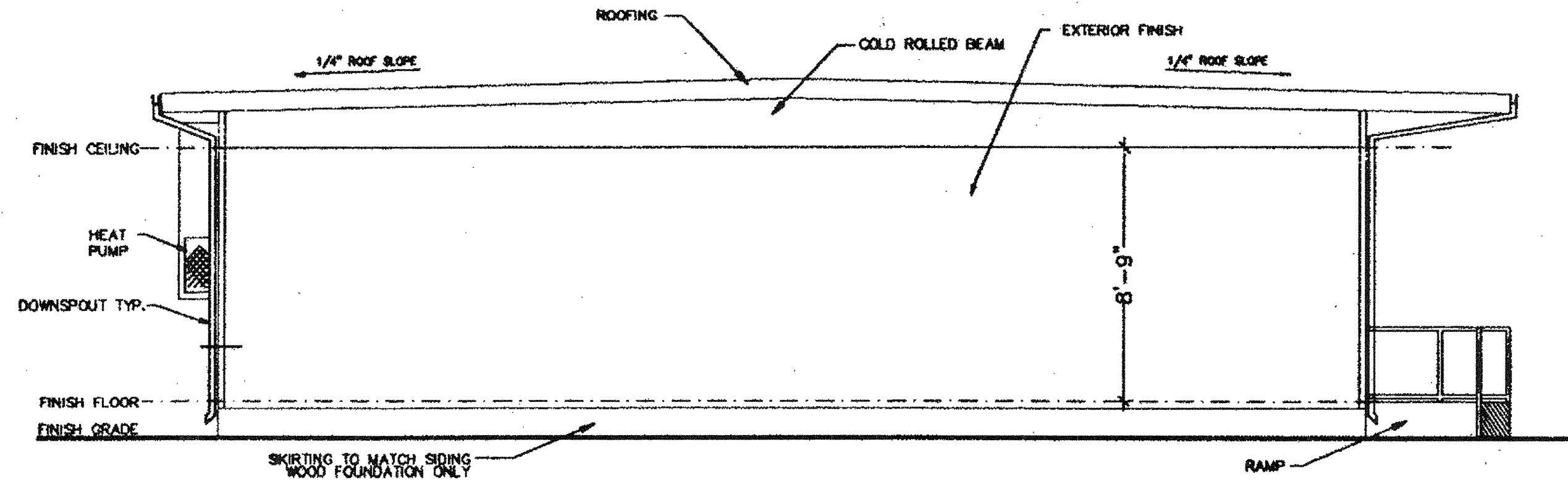
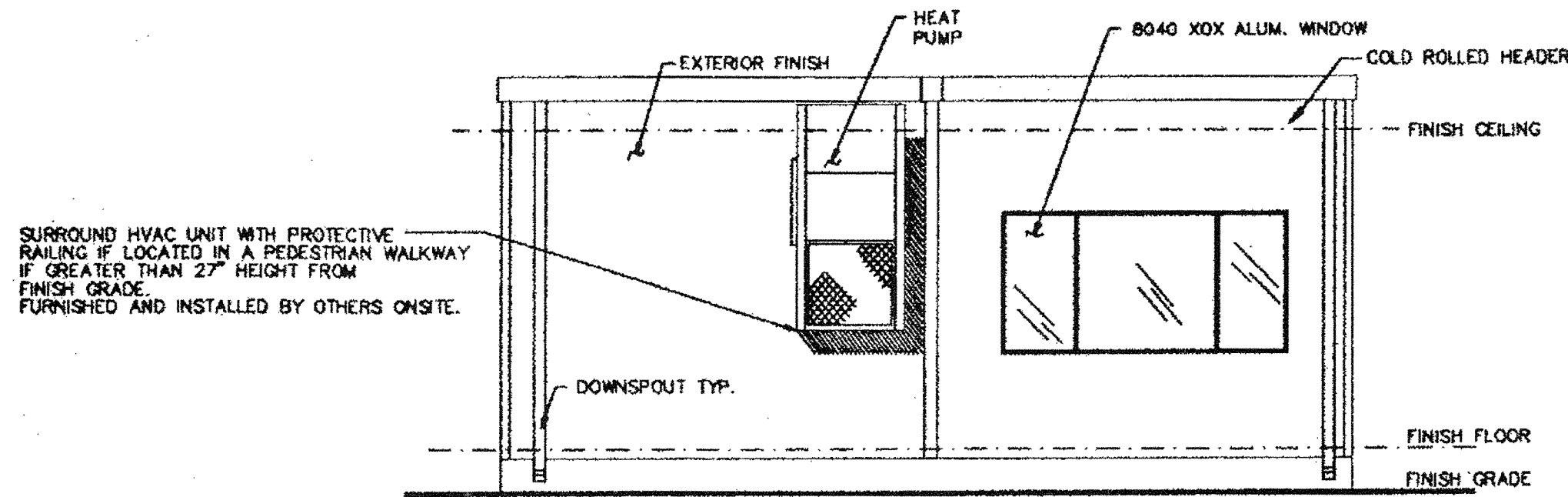


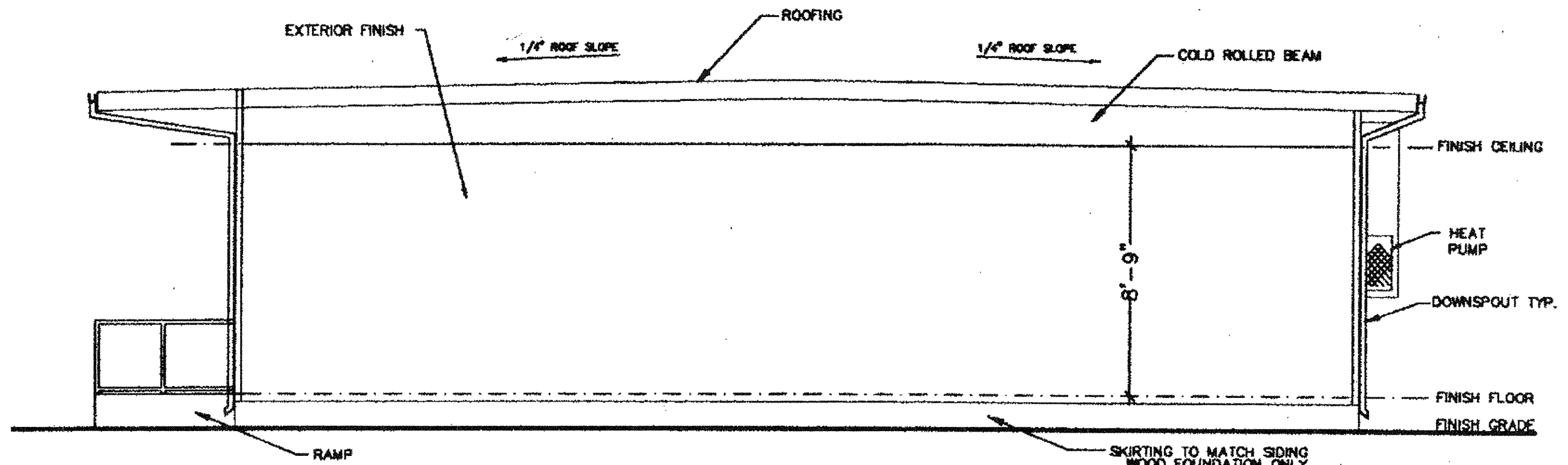
ELEVATION (A)
(SEE SHEET A-1 FOR MONO SLOPE ROOF ELEVATIONS.)



ELEVATION (C)
(SEE SHEET A-1 FOR MONO SLOPE ROOF ELEVATIONS.)



ELEVATION (B)
(SEE SHEET A-1 FOR MONO SLOPE ROOF ELEVATIONS.)



ELEVATION (D)
(SEE SHEET A-1 FOR MONO SLOPE ROOF ELEVATIONS.)

THIS DRAWING AND THE MATERIAL CONTAINED THEREIN ARE THE PROPERTY OF MSI. INC. AND SHALL BE THE PROPERTY OF MSI. INC. IF REPRODUCED, COPIED OR OTHERWISE DISPOSED OF IN WHOLE OR IN PART TO ASSIST IN THE MAKING OF ANY OTHER DRAWINGS, PRINTS APPARATUS OR PARTS THEREOF WITHOUT THE FULL KNOWLEDGE AND WRITTEN CONSENT OF MSI. INC. ALL PATENTABLE AND PROPRIETARY RIGHTS SHALL BE THE PROPERTY OF MSI. INC. MATERIAL CONTAINED HEREIN AND ORIGINATING WITH MSI. INC. SHALL BE THE PROPERTY OF MSI. INC.

MSI
MODULAR STRUCTURES INTERNATIONAL, INC.
880 ORANGE AVE. IRVINE, CALIFORNIA 92614
PHONE: (949) 761-3035 FAX: (949) 761-1665

PC-323

REGENCY ENGINEERING & CONSULTING GROUP
1000 CALIFORNIA BLVD # 106
IRVINE, CALIFORNIA 92614
TELEPHONE: (714) 263-3799
FAX: (714) 263-3795
A SUBSIDIARY OF REGENCY COMPANY, INC.

REGENCY ENGINEERING & CONSULTING GROUP
1000 CALIFORNIA BLVD # 106
IRVINE, CALIFORNIA 92614
TELEPHONE: (714) 263-3799
FAX: (714) 263-3795
A SUBSIDIARY OF REGENCY COMPANY, INC.

STATE AGENCY APPROVAL
JUN 20 2016

STATE AGENCY APPROVAL
APPROVED

ARCHITECT APPROVAL

STRUCTURAL ENGINEERS STAMP

STATE AGENCY APPROVAL

STATE AGENCY APPROVAL

PROJECT
24'X40' MODULAR CLASSROOM BUILDING

JOB # 96-1310
DATE 11/21/96
DRAWN BY
SCALE
APPROVED

REVISIONS
 2/4/97
 3/17/97 DSA REV
 3/24/97 MSI REV
 3/31/97 MSI REV
 4/25/97 MSI REV

PLOT DATE: 04/28/97
SHEET NO.

A-2-24