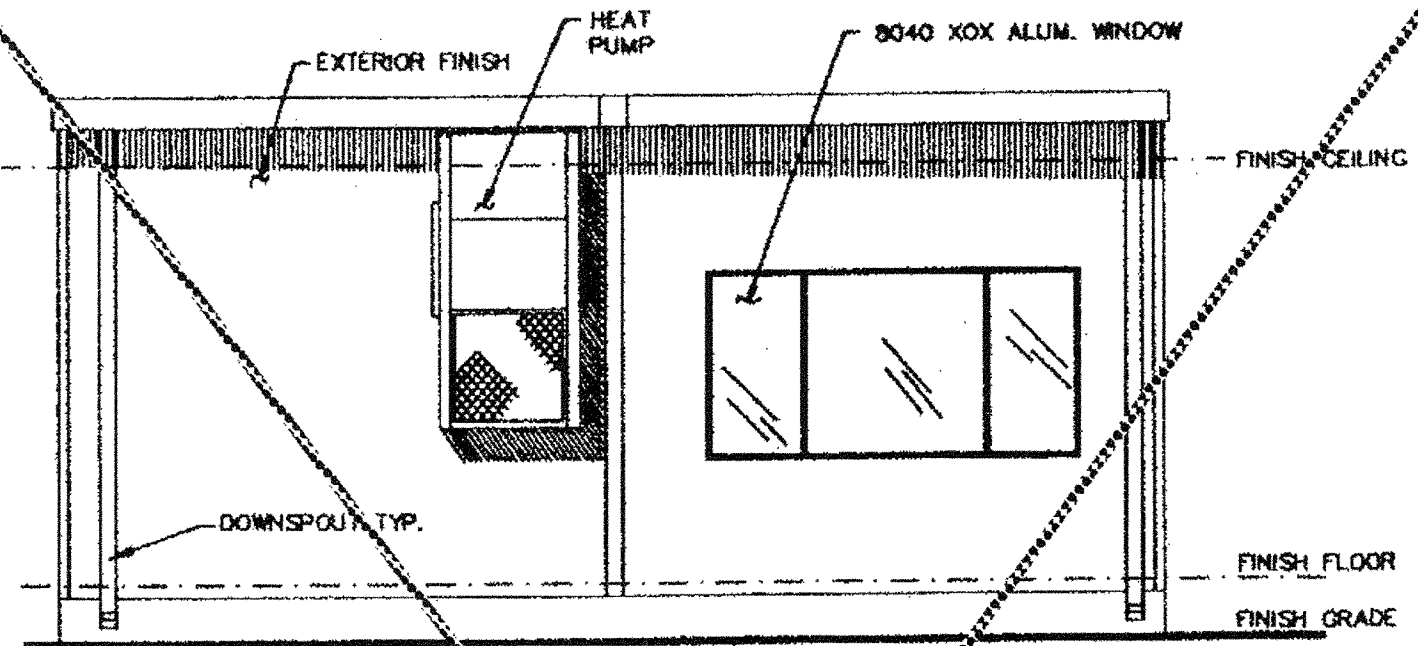
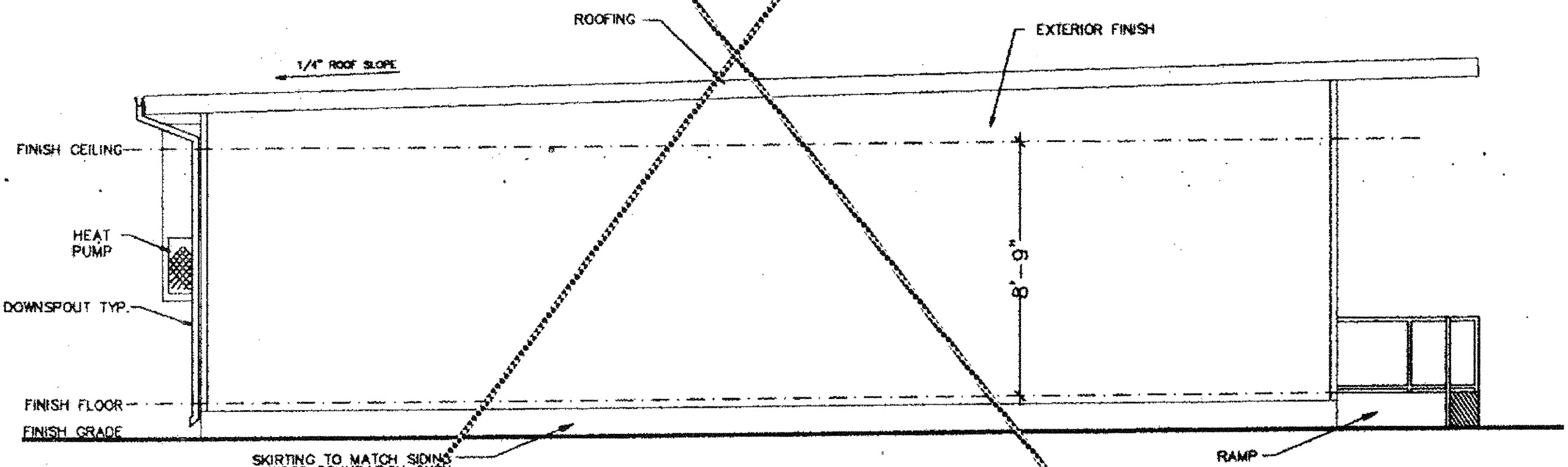


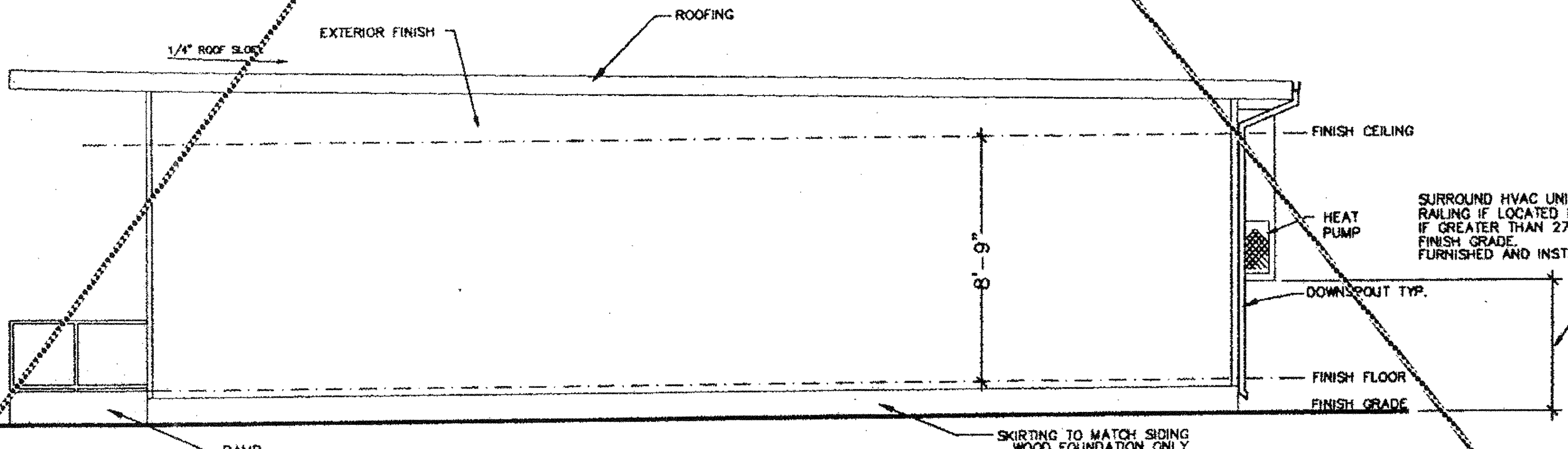
ELEVATION A
(SEE SHEET A-2 FOR DUAL SLOPE ROOF ELEVATIONS.)



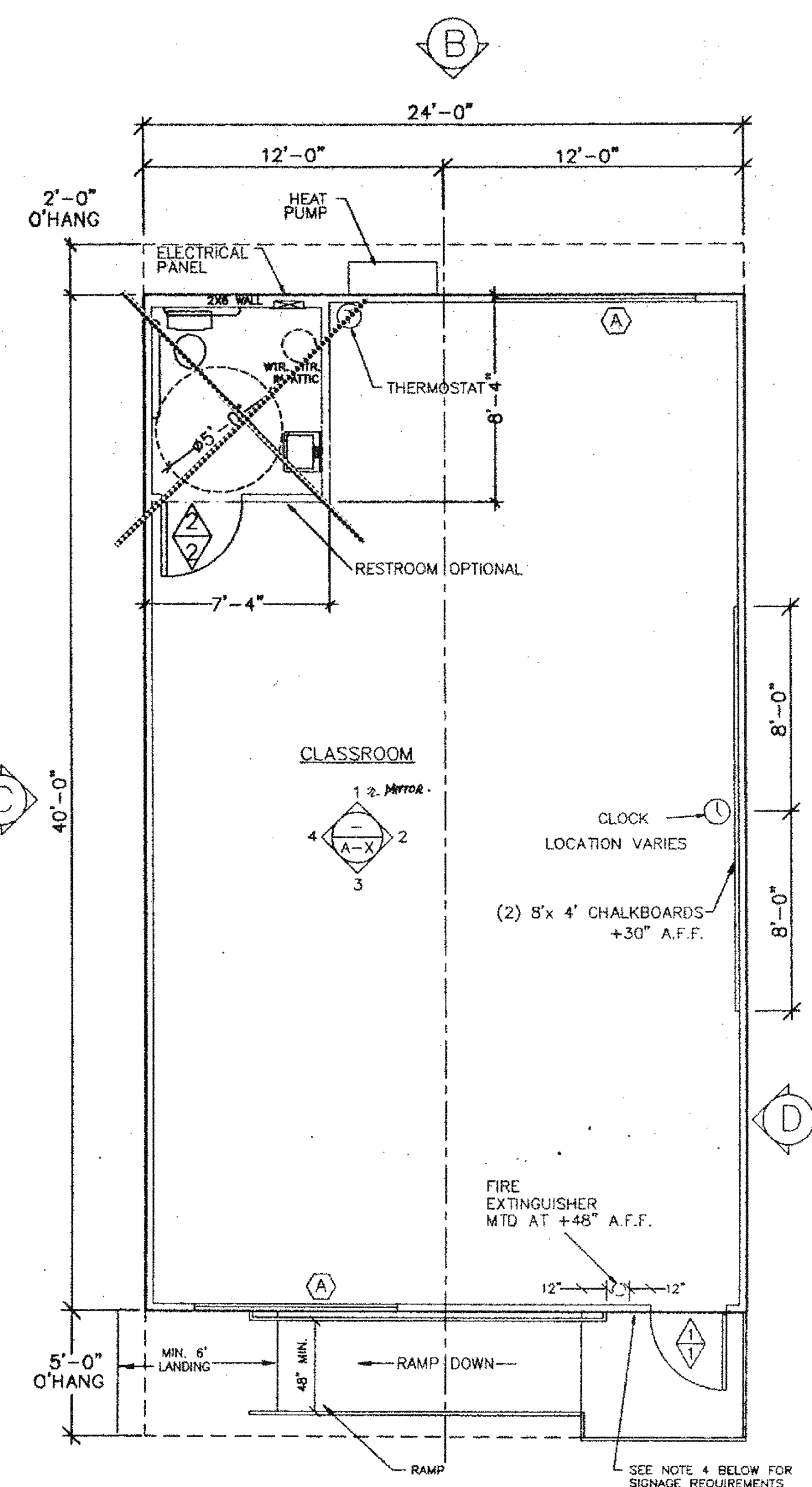
ELEVATION B
(SEE SHEET A-2 FOR DUAL SLOPE ROOF ELEVATIONS.)



ELEVATION C
(SEE SHEET A-2 FOR DUAL SLOPE ROOF ELEVATIONS.)



ELEVATION D
(SEE SHEET A-2 FOR DUAL SLOPE ROOF ELEVATIONS.)



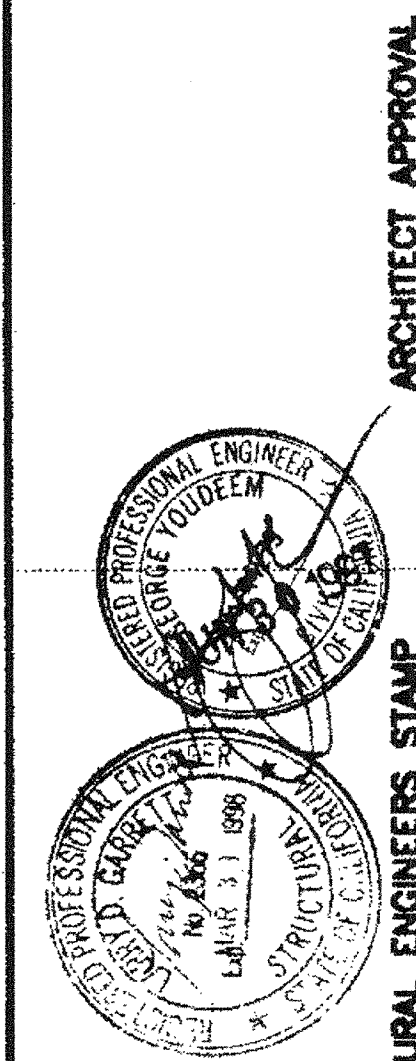
NOTE:
FLOOR PLAN SHOWN IS 'B' BUILDING
'A' BUILDING IS OPPOSITE HANDED

FLOOR PLAN

- ◊ INDICATES DOOR TYPE SEE SHEET C-1
- ◊ INDICATES HARDWARE TYPE
- Ⓐ INDICATES WINDOW TYPE- SEE SHEET C-1

- NOTES:**
- MANUFACTURER SHALL MECHANICALLY ATTACH METAL TAG TO EXTERIOR OF BUILDING SHOWING OSA APPLICATION NUMBER, MANUFACTURERS NAME, UNIT SERIAL NUMBER, DESIGN LIVE LOADS FOR FLOOR AND ROOF, AND THE DESIGN WIND LOAD.
 - WALL AND CEILING FINISHES SHALL BE MIN. CLASS I MATERIAL
 - FIBERGLAS INSULATION SHALL HAVE THE FOLLOWING:
FLAME SPREAD 0-25
SMOKE DEVELOPED, FUEL CONTRIBUTED 0-450
 - SIGNAGE REQUIRED PER APPLICABLE CODES LISTED ON SHEET T-1 PROVIDED AND INSTALLED BY OTHERS ONSITE.
 - ANY ROOM HAVING AN OCCUPANT LOAD OF 50 OR MORE WHERE FIXED SEATS ARE NOT INSTALLED, AND WHICH IS USED FOR CLASSROOM, ASSEMBLY, DINING OR SIMILAR PURPOSE SHALL HAVE THE CAPACITY OF THE ROOM POSTED IN A CONSPICUOUS PLACE NEAR THE MAIN EXIT OF THE ROOM. POSTING SHALL BE BY MEANS OF A DURABLE SIGN HAVING CONTRASTING COLOR FROM THE BACKGROUND TO WHICH IT IS ATTACHED.
 - MAXIMUM EFFORT TO OPERATE DOORS SHALL NOT EXCEED 8-1/2 POUNDS FOR EXTERIOR DOORS AND 5 POUNDS FOR INTERIOR DOORS, SUCH PULL OR PUSH EFFORT BEING APPLIED AT RIGHT ANGLES TO HINGED DOORS AND AT THE CENTER PLANE OF SLIDING OR FOLDING DOORS. COMPENSATING DEVICES OR AUTOMATIC DOOR OPERATORS MAY BE UTILIZED TO MEET THE ABOVE STANDARDS. WHEN FIRE DOORS ARE REQUIRED, THE MAXIMUM EFFORT TO OPERATE THE DOOR MAY BE INCREASED NOT TO EXCEED 15 POUNDS.

THIS DRAWING AND THE MATERIAL CONTAINED THEREIN ARE THE PROPERTY OF M.S.I. INC. AND SHALL NOT BE REPRODUCED, COPIED OR OTHERWISE DISPOSED OF DIRECTLY OR INDIRECTLY WITHOUT THE WRITTEN CONSENT OF M.S.I. INC. FOR THE PURPOSE OF FURNISHING ANY INFORMATION OR PARTS THEREOF WITHOUT THE FULL PATENTABLE MATERIAL CONTAINED HEREIN AND ORIGINATING WITH M.S.I. INC. SHALL BE THE PROPERTY OF M.S.I. INC. MATERIAL CONTAINED HEREIN AND ORIGINATING WITH M.S.I. INC. SHALL BE THE PROPERTY OF M.S.I. INC.



JUN 20 2016

REGISTRATION STAMP
STATE OF CALIFORNIA
OFFICE OF THE QUALITY SERVICES
APR 6 6 55
JUN 7 1997

STATE AGENCY APPROVAL
APR 29 1997

MSI
MODULAR STRUCTURES INTERNATIONAL, INC.
17165 VON KARMAN, SUITE # 108
IRVINE, CALIFORNIA 92614
PHONE: (949) 768-3028 FAX: (949) 768-1823
PC-323

REGENCY ENGINEERING & CONSULTING GROUP
17165 VON KARMAN, SUITE # 108
IRVINE, CALIFORNIA 92614
TELEPHONE: (714) 263-3799
FAX: (714) 263-3795
A SUBSIDIARY OF REGENCY COMPANY, INC.

STATE AGENCY APPROVAL
PROJECT
24'X40' MODULAR CLASSROOM BUILDING
JOB # 96-1310
DATE 11/21/96
DRAWN BY
SCALE
APPROVED
REVISIONS
2/4/97
3/17/97 DSA REV.
3/24/97 MSI REV.
3/31/97 MSI REV.
4/25/97 MSI REV.
PLOT DATE: 04/28/97
SHEET NO.
A-1-24

STATE AGENCY APPROVAL
ARCHITECT APPROVAL
STRUCTURAL ENGINEERS STAMP
FLOOR PLAN & EXTERIOR ELEVATIONS