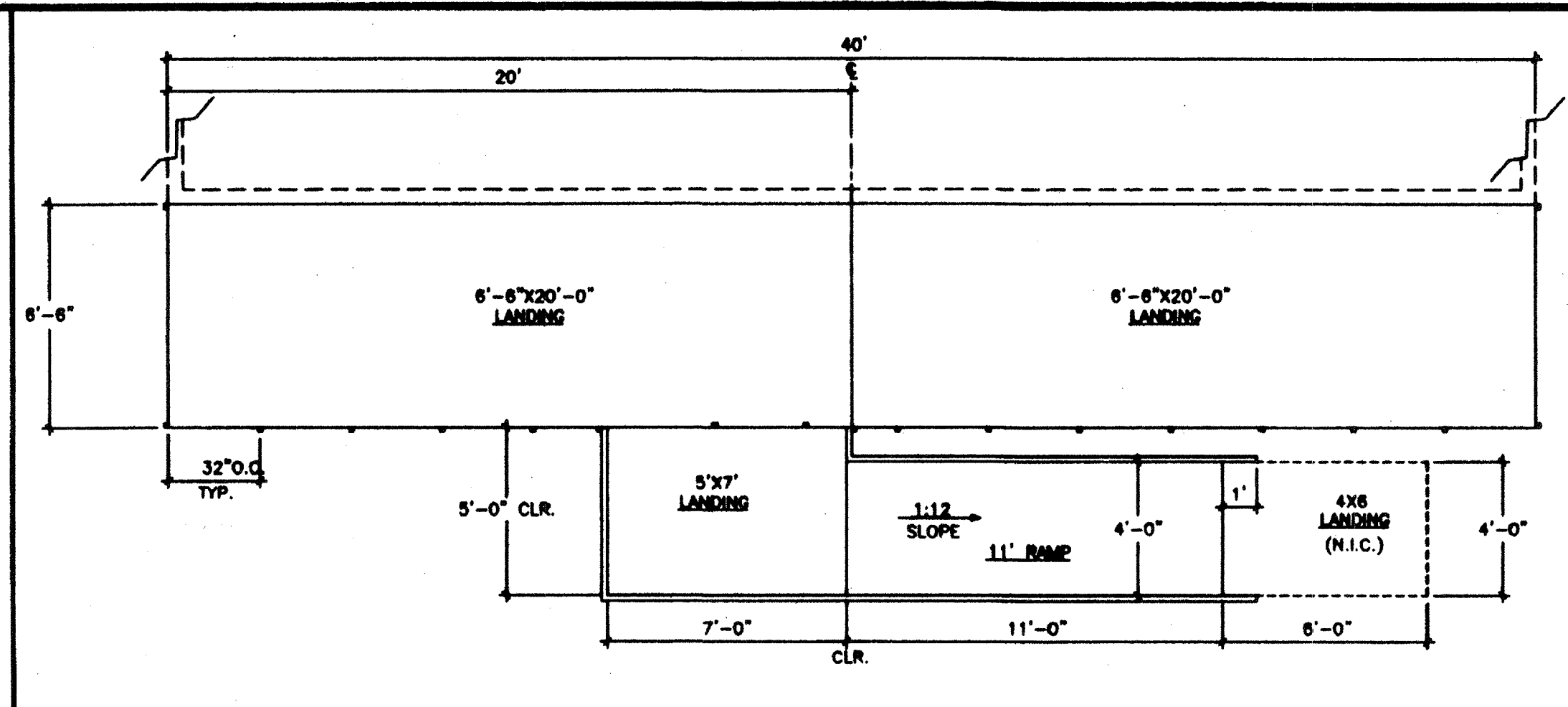
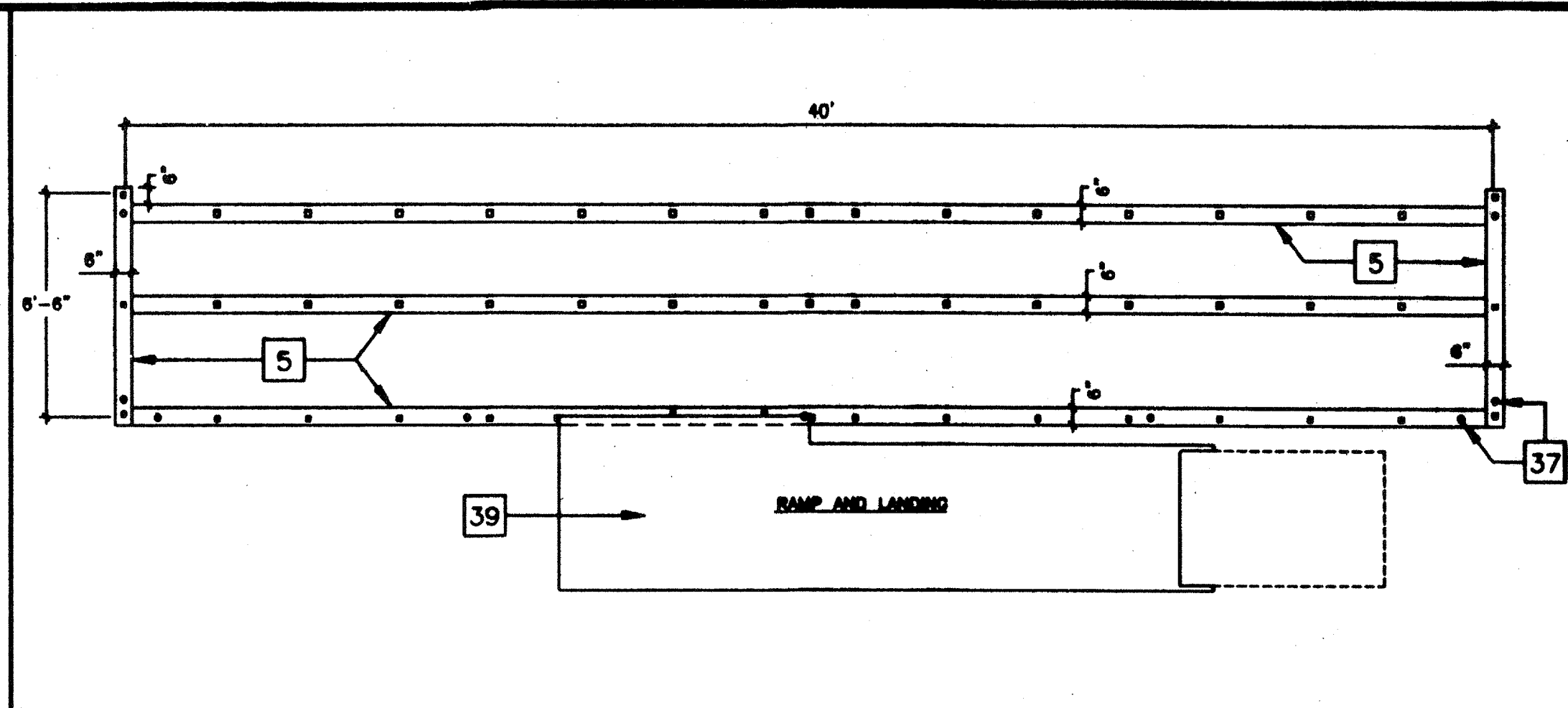


GUSSET PLATE DETAIL

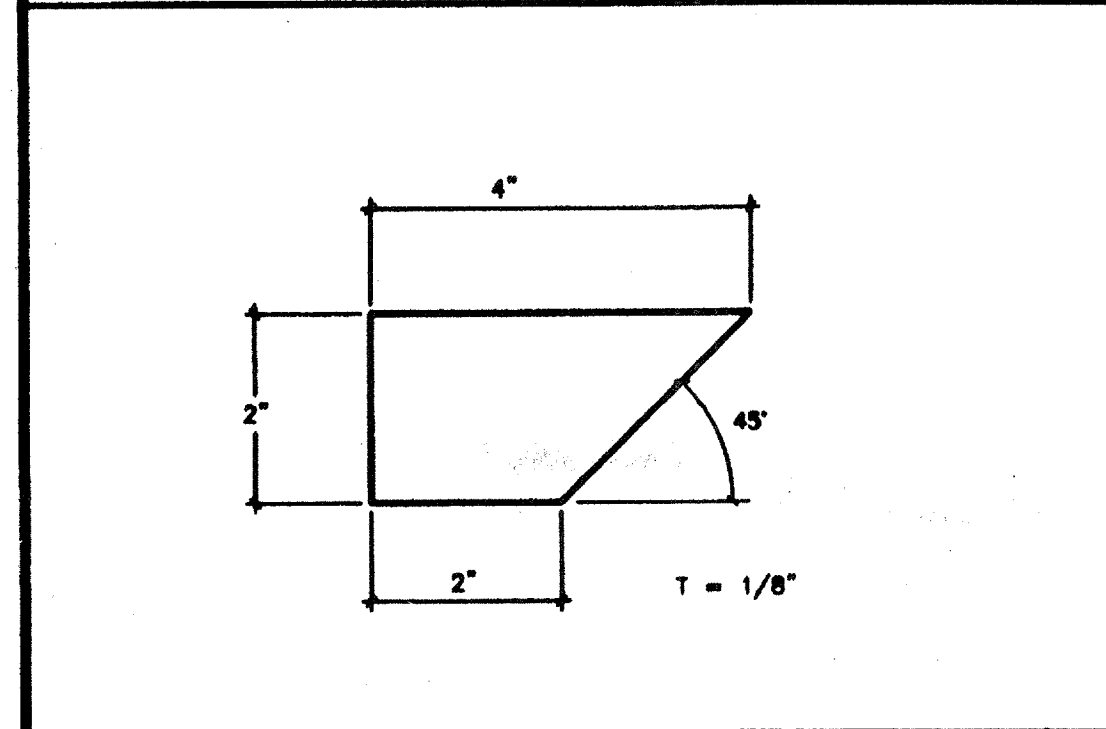


COMMON LANDING AT BUILDING

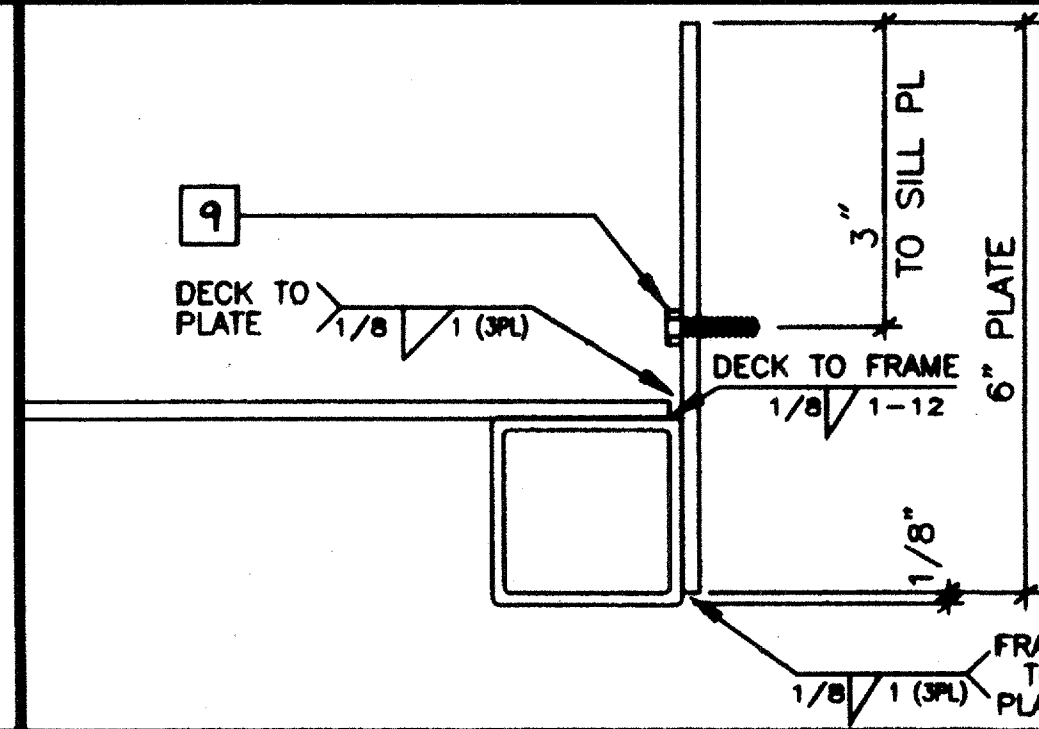


SILL PLAN @ LANDING

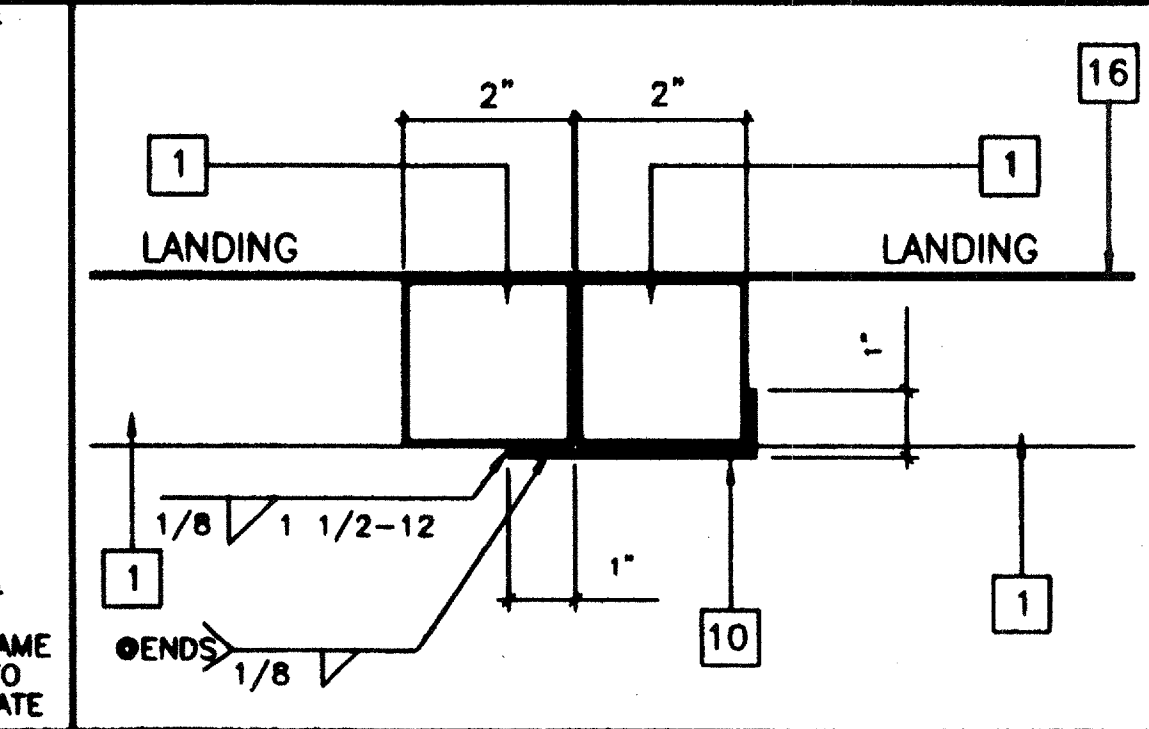
- KEY NOTES**
- 1 TS 2" x 2" x 14ga
 - 2 TS 1 1/2" x 1 1/2" x 14ga (Fy = 39KSI)
 - 3 TS 1 1/4" x 1 1/4" x 14ga (Fy = 39KSI)
 - 4 TS 1" x 1" x 16ga WHEELCHAIR GUIDE
 - 5 2 x 6 PT SILL PLATE
 - 9 8" x 12" x 10ga PLATE W/2-1/4" x 3" LAGS TO G. OF SILL PLATE.
 - 10 3" x 1" x 10ga BENT PLATE - LENGTH VARIES
 - 11 2" x 4" x 12ga BASE PLATE W/2-1/4" x 1" LAGS
 - 15 SKIRTING: PLYWOOD TO MATCH BUILDING SIDING BLOCK. ALL EDGES. ATTACH W/ 5d @ 6" OC EDGES AND 12" OC FIELD. AT EDGE CONNECTION TO T.S. USE #14 x 2" TEK SCREWS @ 6" OC
 - 16 12ga METAL DECK: NON-SLIP SURFACE. DESIGN COEFFICIENT OF FRICTION GREATER THAN 6X. MAINTAINABLE FOR 1 YR.
 - 18 EXISTING BUILDING.
 - 23 3/8" dia x 2" LONG MB W/NUT & WASHERS
 - 37 SILL RESTRAINT PIPE 1" - MIN. 12" EMBEDMENT MAXIMUM 10'-0" O.C.
 - 39 FOR RAMP AND LANDING SPECIFICATIONS W/ DETAILED INFORMATION PLEASE REFER TO SHEETS R1.0 & R2.0 FOR THE INTERMEDIATE LANDING DESIGN, AND SHEETS R3.0 & R4.0 FOR THE RAMP DESIGN.
 - 40 1/8" THICK GUSSET PLATE 3 PLACES TOTAL - SEE PLANS FOR LOCATIONS



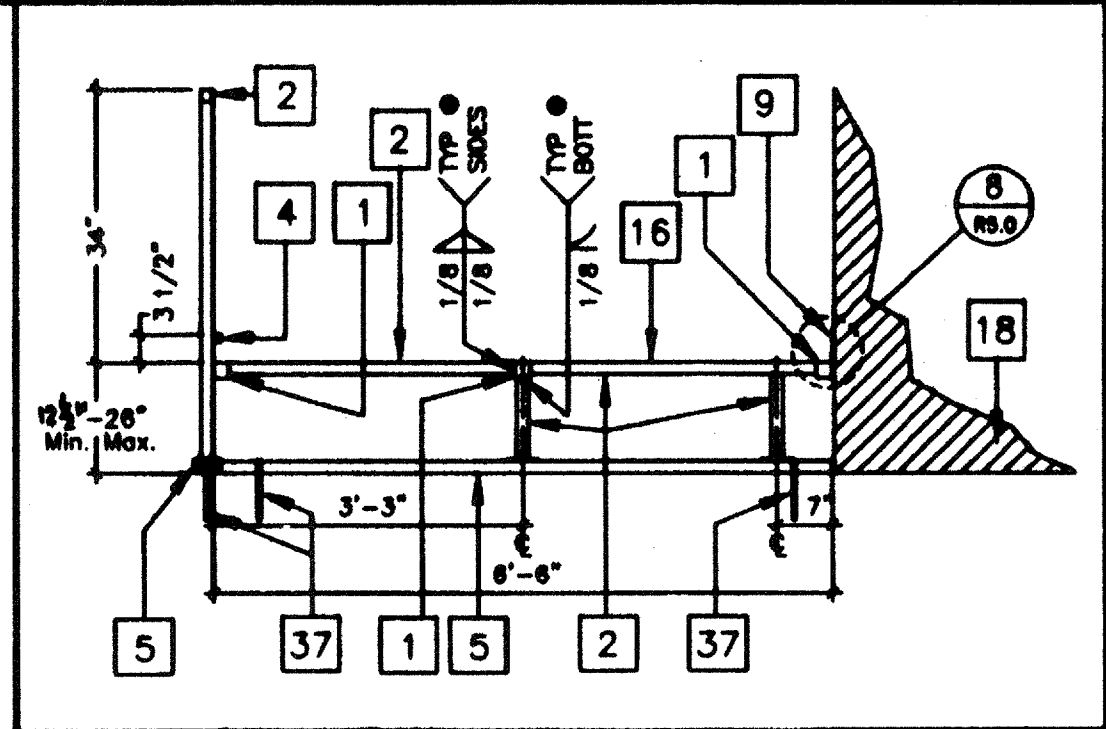
GUSSET PLATE



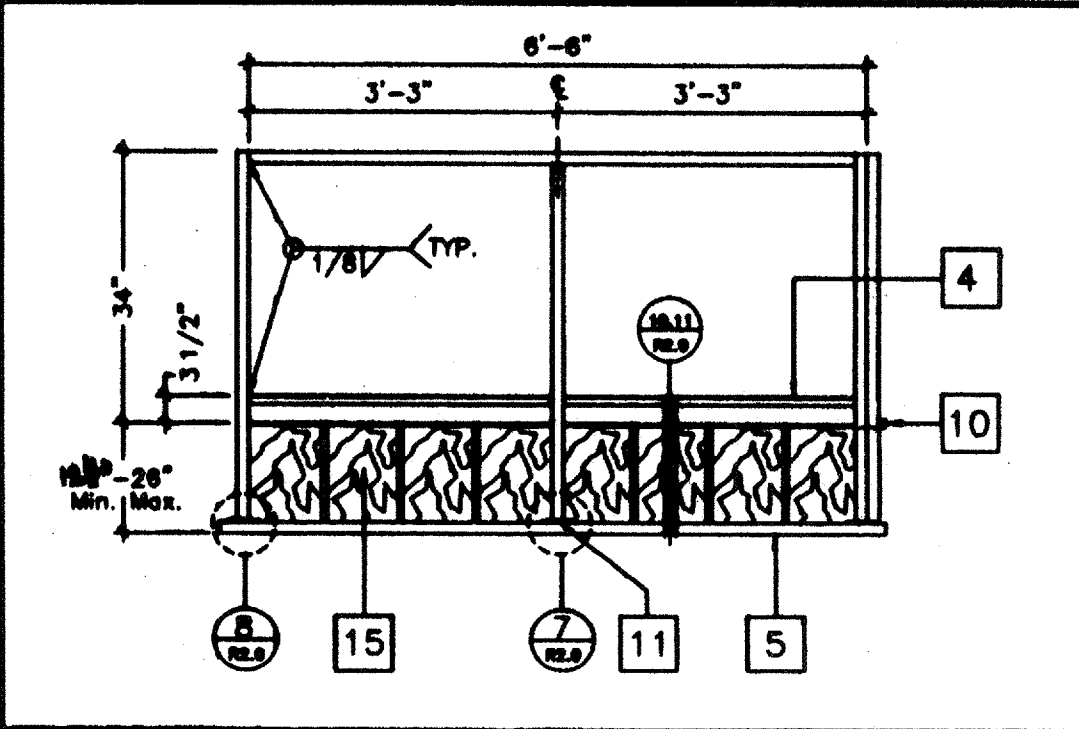
SECTION @ PLATE



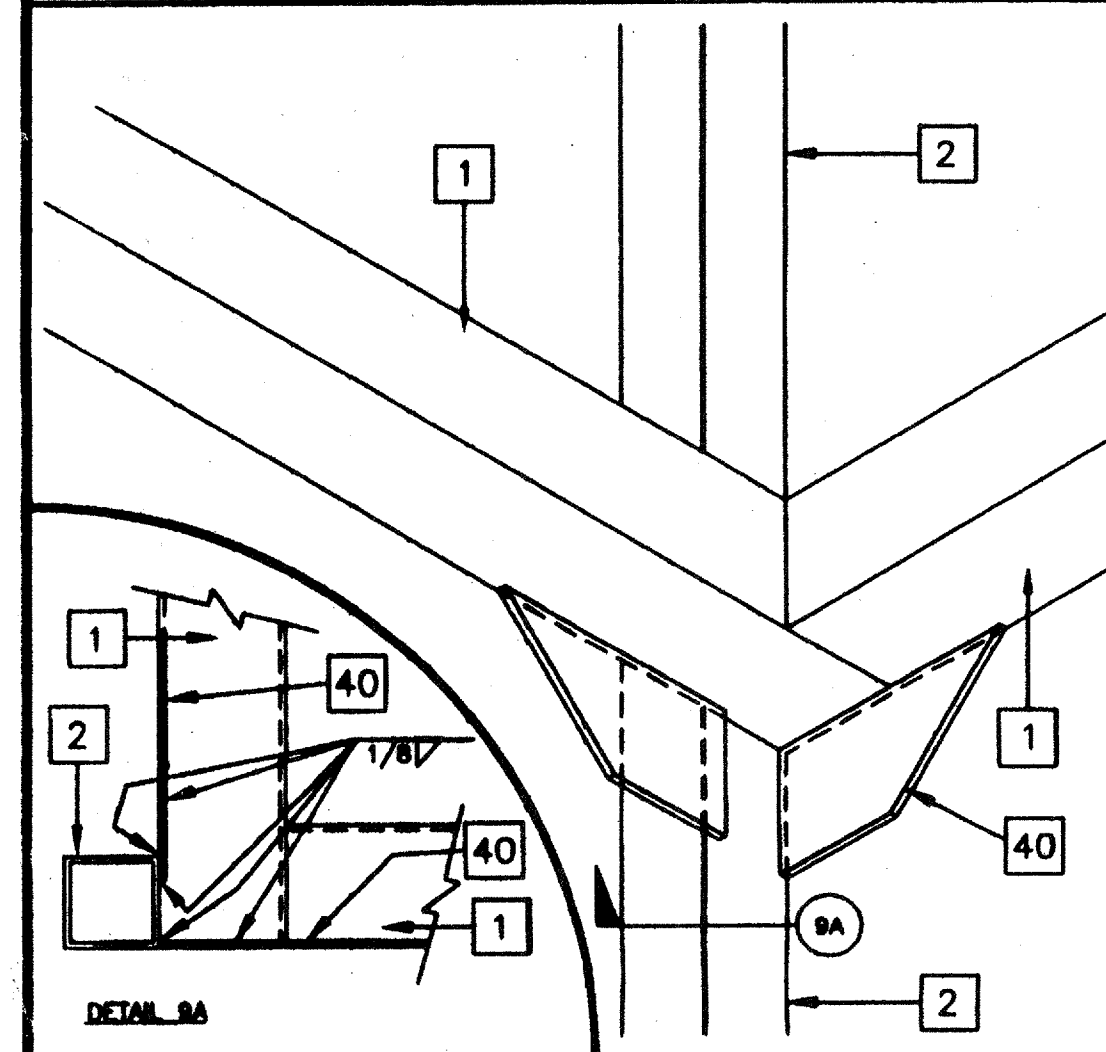
LANDING TO LANDING



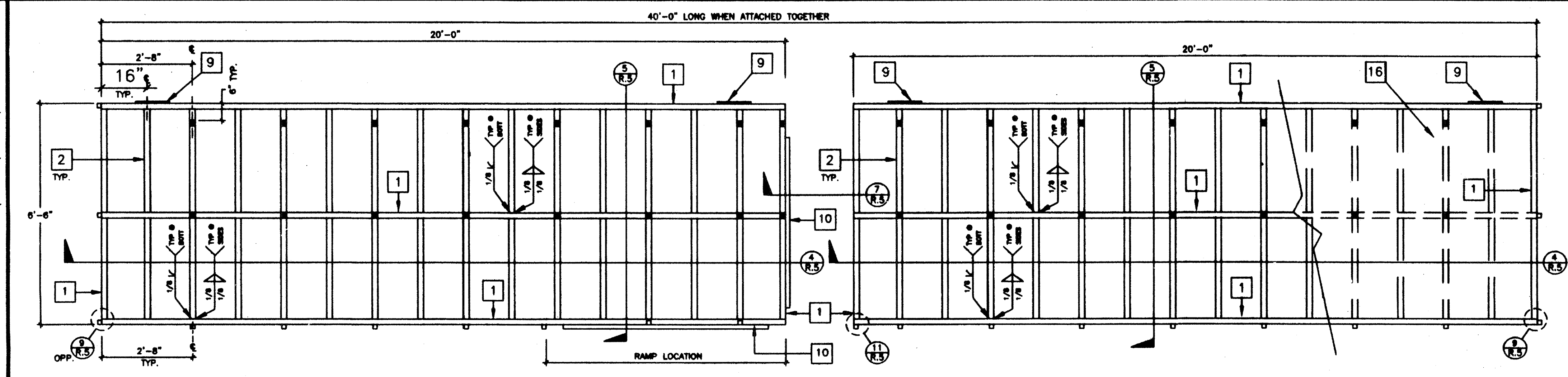
SECTION @ LANDING



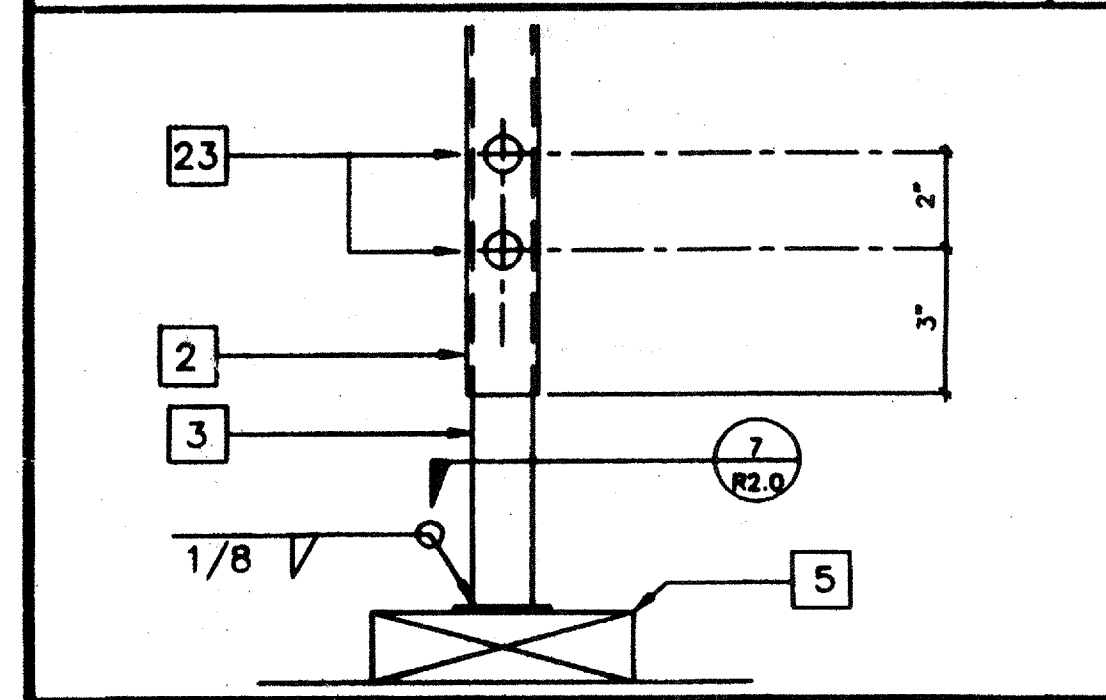
(TYP.) LANDING ELEVATION



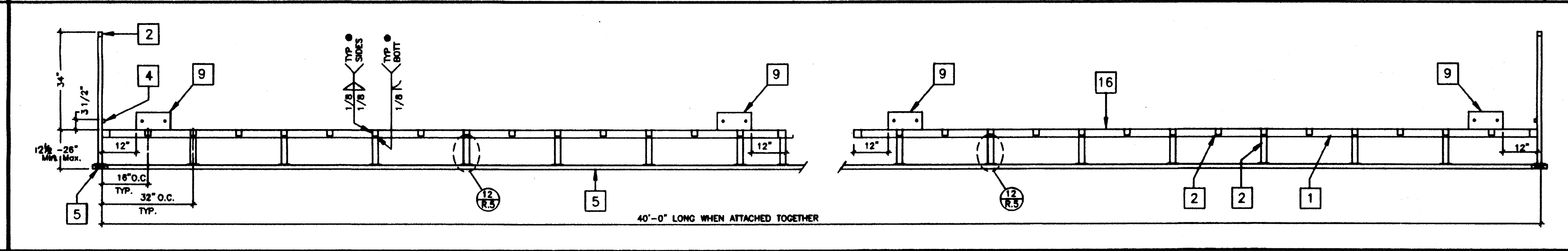
GUSSET PLATE DETAIL



LANDING FRAME



SECTION @ ADJUSTABLE POST



LONGITUDINAL SECTION @ LANDING

NOTES

- 1 RAMPS: RAMPS SHALL NOT SLOPE MORE THAN 1" IN 12"
- 2 HANDRAILS: HANDRAILS AT BOTH SIDES OF RAMP AT 34" HT.
- 3 SURFACE: LANDING & RAMP TO HAVE NON SLIP SURFACE AMCOR GRIP II AS MANUFACTURED BY AMERICAN CHEMICAL COMPANY (OR EQUAL)
- 4 GROUNDING: PROVIDE GROUNDING OF RAMP TO BLDG FRAME W/8 CU TO BOTH GROUND LUGS.
- 5 ARCHITECT SITE / RAMP / LANDING PLANNING: DUE TO VARYING SITE CONDITIONS THE MAXIMUM HEIGHT OF FINISH FLOOR FROM GRADE IS 26" THEREFORE IT IS POSSIBLE THAT THE ACCESS RAMP ATTACHED TO THE BUILDING COULD BE 26'-0" AT A SLOPE OF 1:12 ARCHITECT MUST TAKE INTO ACCOUNT THAT THE RAMP SUPPLIED BY MODTECH INC. IS 11'-0" AT A SLOPE OF 1:12 THEREFORE THE ARCHITECT WILL HAVE TO DESIGN AND PROVIDE SUFFICIENT DETAILS OF RAMP EXTENSIONS AND BOTTOM LANDING DEPENDING ON PARTICULAR SITE CONDITIONS. IN NO WAY IS MODTECH INC. RESPONSIBLE FOR ANY RAMP EXTENSION EXCEEDING THE ORIGINAL PLAN AS SHOWN ON SHEET R-1.
- 6 ALL TUBE STEEL TO BE OF ASTM A500 GRADE A STEEL (Fy = 39 KSI)
- 7 OVERALL LENGTH OF THE LANDING MAY VARY FROM 26'-8" UP TO 40'-0". LENGTH MUST CONFORM TO STRUCTURAL DESIGN OF APPROVED LANDING. (MULTIPLES OF 32")

REVISIONS

1		
2		
3		
4		
5		

Electrical Engineer's Seal
 Mechanical Engineer's Seal
 Structural Engineer's Seal
 ARCHITECT'S SEAL
 IDENTIFICATION STAMP
 MODTECH INC.
 2830 BARRETT AVENUE
 PERRIS, CALIF. 92572
 PH (909) 943-4014
 FAX (909) 940-0427
 Job Number: PC 284
 JOB# 2724 # 2818-C
 ANAHEIM U.H.S.D.
 (CLASS LEASING)
 © MODTECH, INC. 1997
 402-081
 CLS. 036 2/11/98
 drawn by: R.N.
 checked by: 5/14/97
 date
 Modtech project no.
 MODTECH Index No.

IDENTIFICATION STAMP
 DIV. OF THE STATE ARCHITECT
 OFFICE OF REGULATORY SERVICES
 04 100270
 AC 17025
 AC 17025
 DATE 6/11/98
 PROJECT #
 PC 284
 RAMP / LANDING R5.0