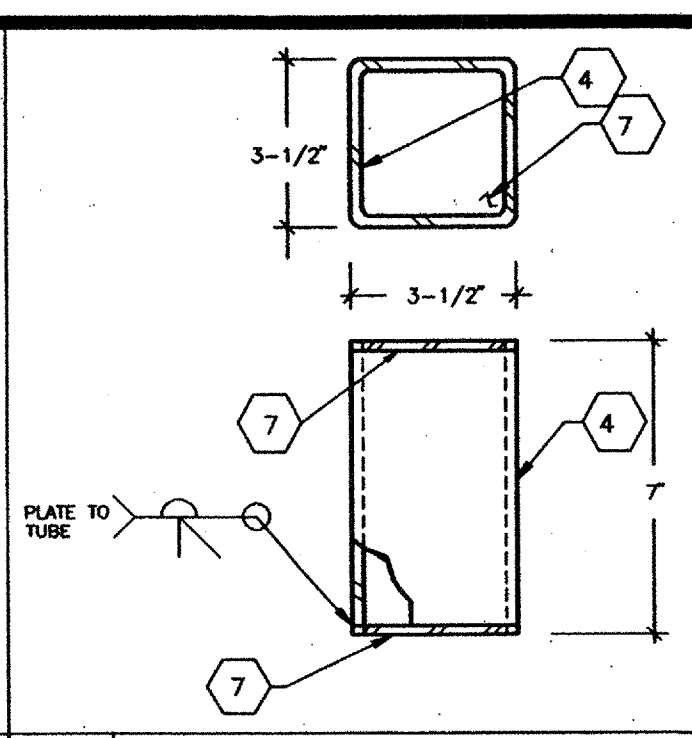
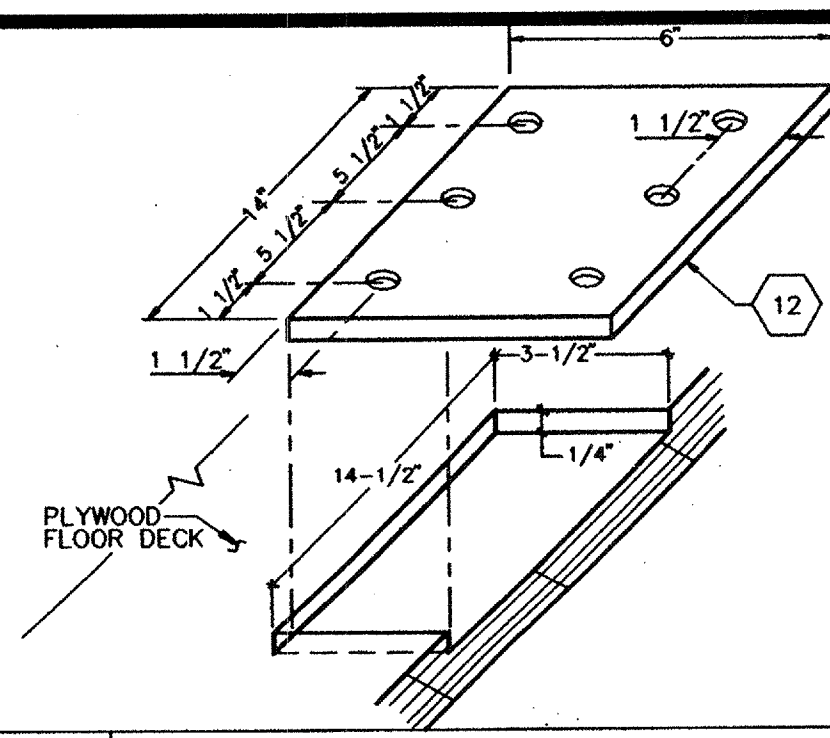


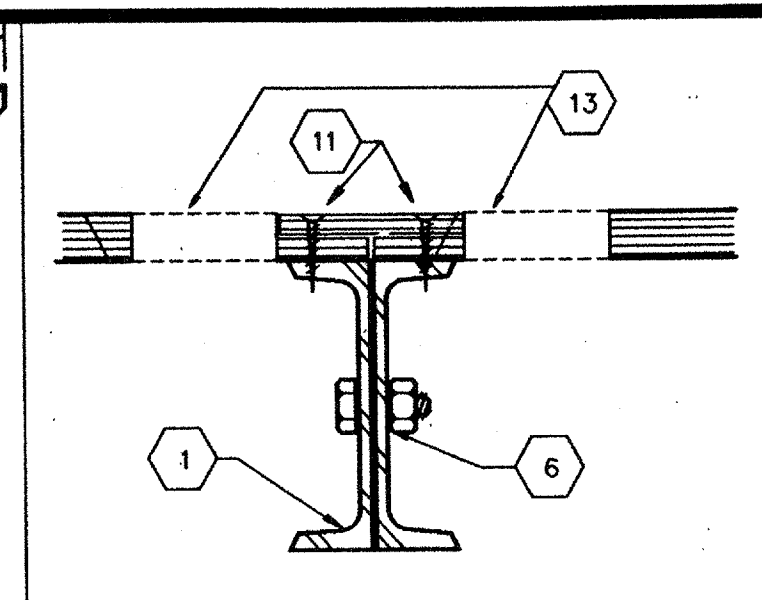
12 PERIMETER FLOOR



8 TUBE PLATE WELDMENT



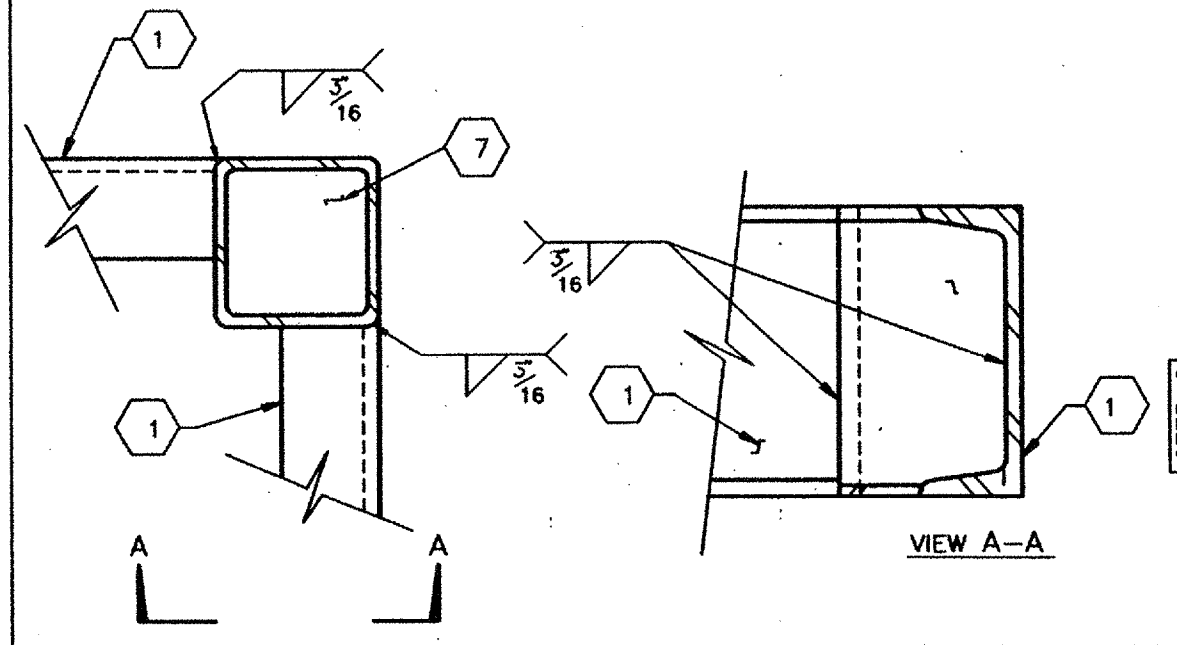
5 ALT. MOD CONN. PLATE TYPE II



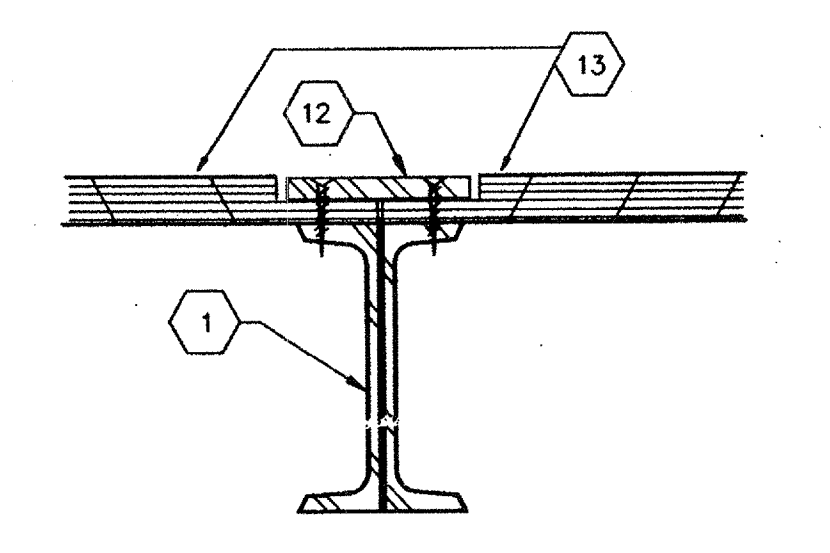
1 TYP. MOD CONN. @ FLR. TYPE I

KEYNOTES

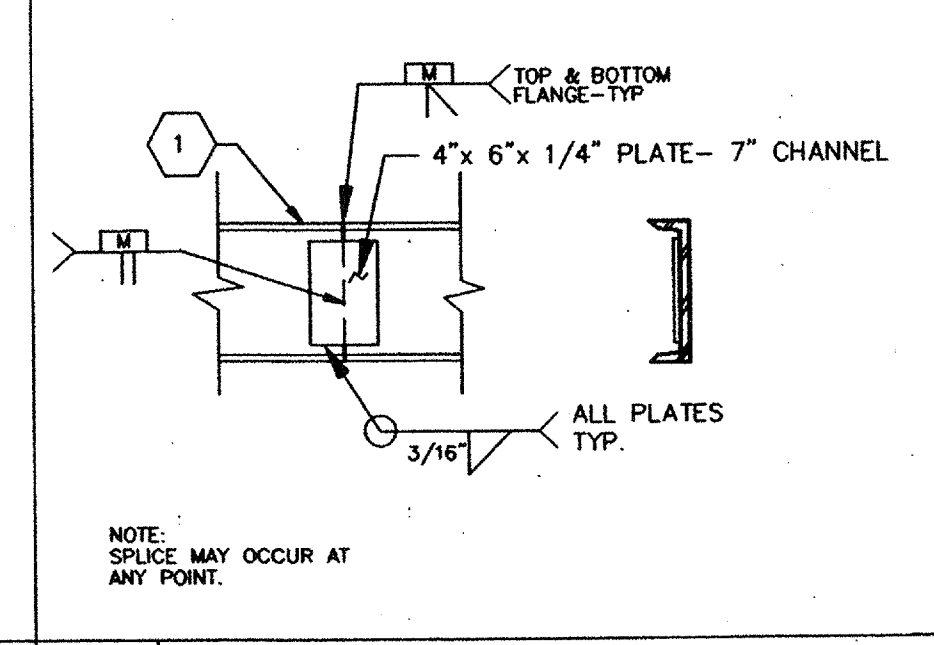
- NOTES
1. [ 7' x 9.8' IS PERIMETER FLOOR FRAME
  6. 5/8" MACHINE BOLT @ MODULE CONNECTION LOCATIONS AT 8 FT. O.C. AT ROOF AND 10 FT. O.C. AT FLOOR
  10. 2' 7" X 11 GA. FLOOR JOIST
  11. FLOOR SHEATHING- 1-1/8" APA RATED STURD-I-FLOOR OR EQUAL, P.S. 1-83 T & G EDGES, 48" SPAN RATING; ATTACH TO STEEL FRAMING WITH 170/192 PIN OR #10-24 X 1 3/4 SELF TAP SCREW @ 8" O.C. BOUNDARY & EDGES AND 10" O.C. FIELD.
  12. 6" X 14" X 12 GA. PLATE WITH (6) #10-34 X 1 3/4" FLAT HEAD SELF TAP SCREWS INTO STEEL CHANNEL FLOOR FRAME (TYPE II)
  13. 5" DIA. HOLE AT BOLT LOCATION. (CONN. TYPE 1)
  14. 7" X 11 GA. STEEL BRACE WELDED TO PERIMETER FRAME AND FLOOR JOIST.
  15. N/A
  16. N/A
  17. AT MODULE JOINT TAKE PLYWOOD TO EDGE OF CHANNEL AT PERIMETER, HOLD PLYWOOD BACK AS INDICATED.
  18. R-11 INSULATION ON "SEAL TITE" TYPE HW POLYMAX UNDERBELLY OR EQUAL WITH BIDIRECTIONAL POLYESTER FIBERS.
  32. 2X4 BOTTOM PLATE
  33. .131 X 3 1/4" NAIL (8d NAIL) AT 8" O.C.



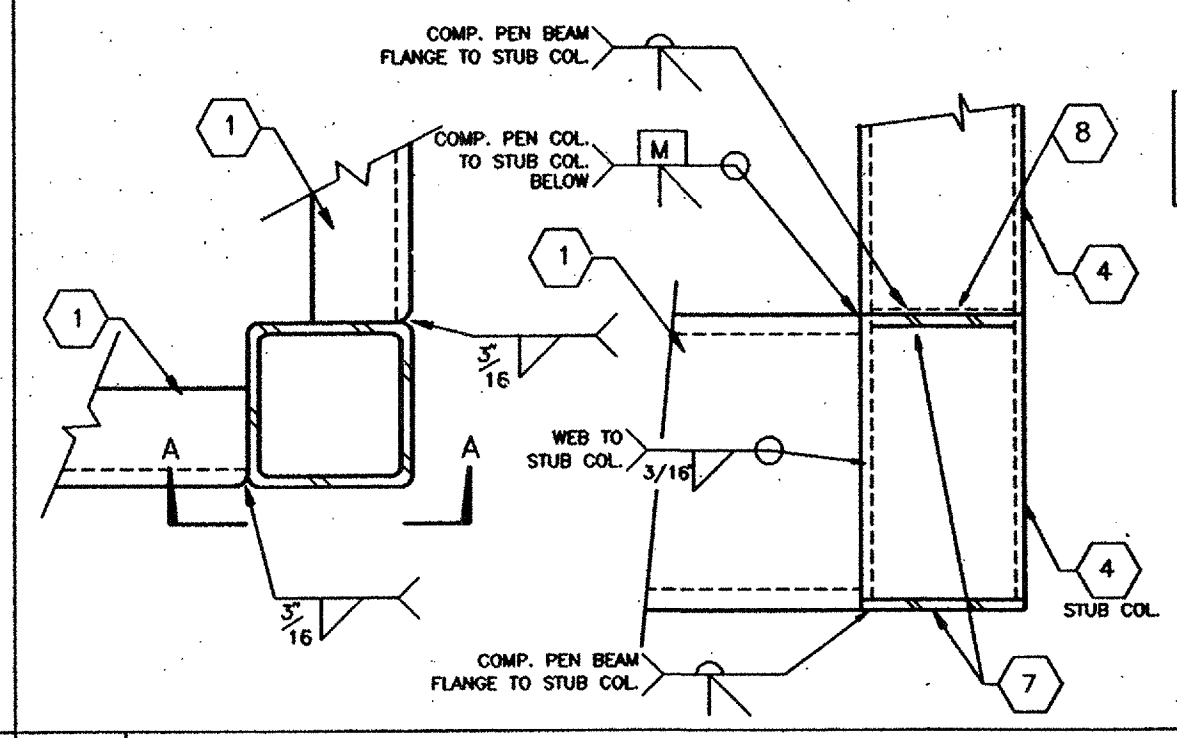
9 POCKET TUBE TO FLOOR FRAME



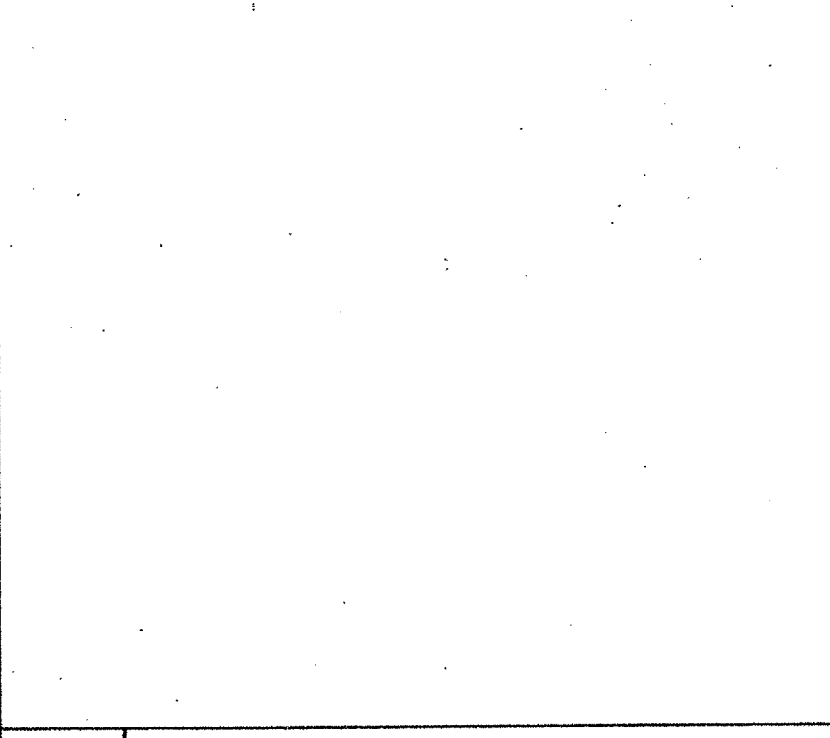
6 ALT. MOD CONN. @ FLR. TYPE II



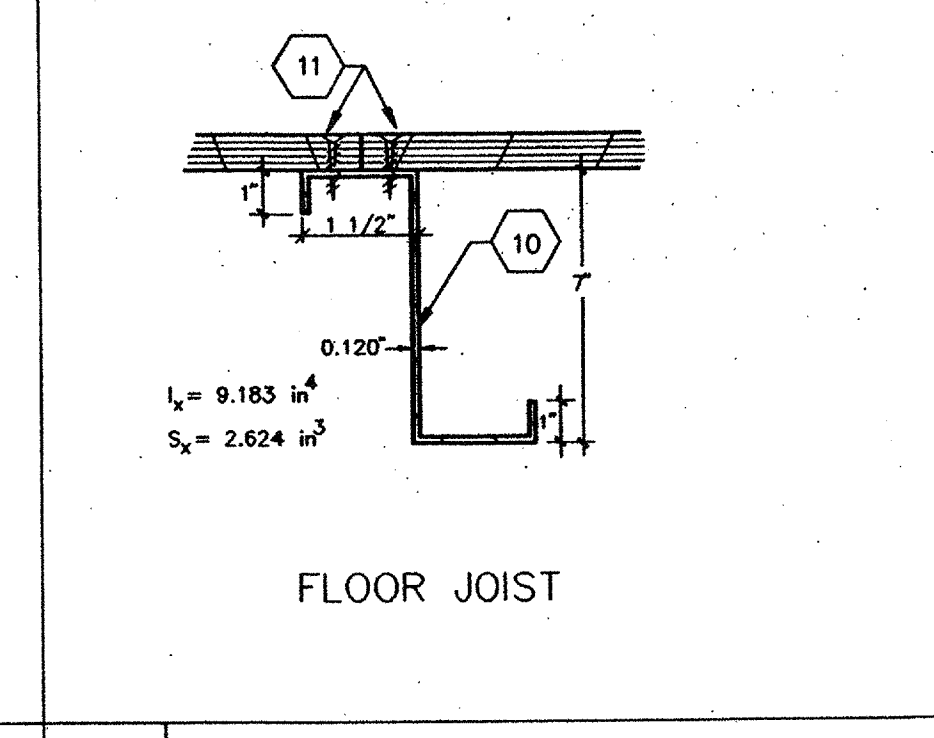
2 CHANNEL SPLICE



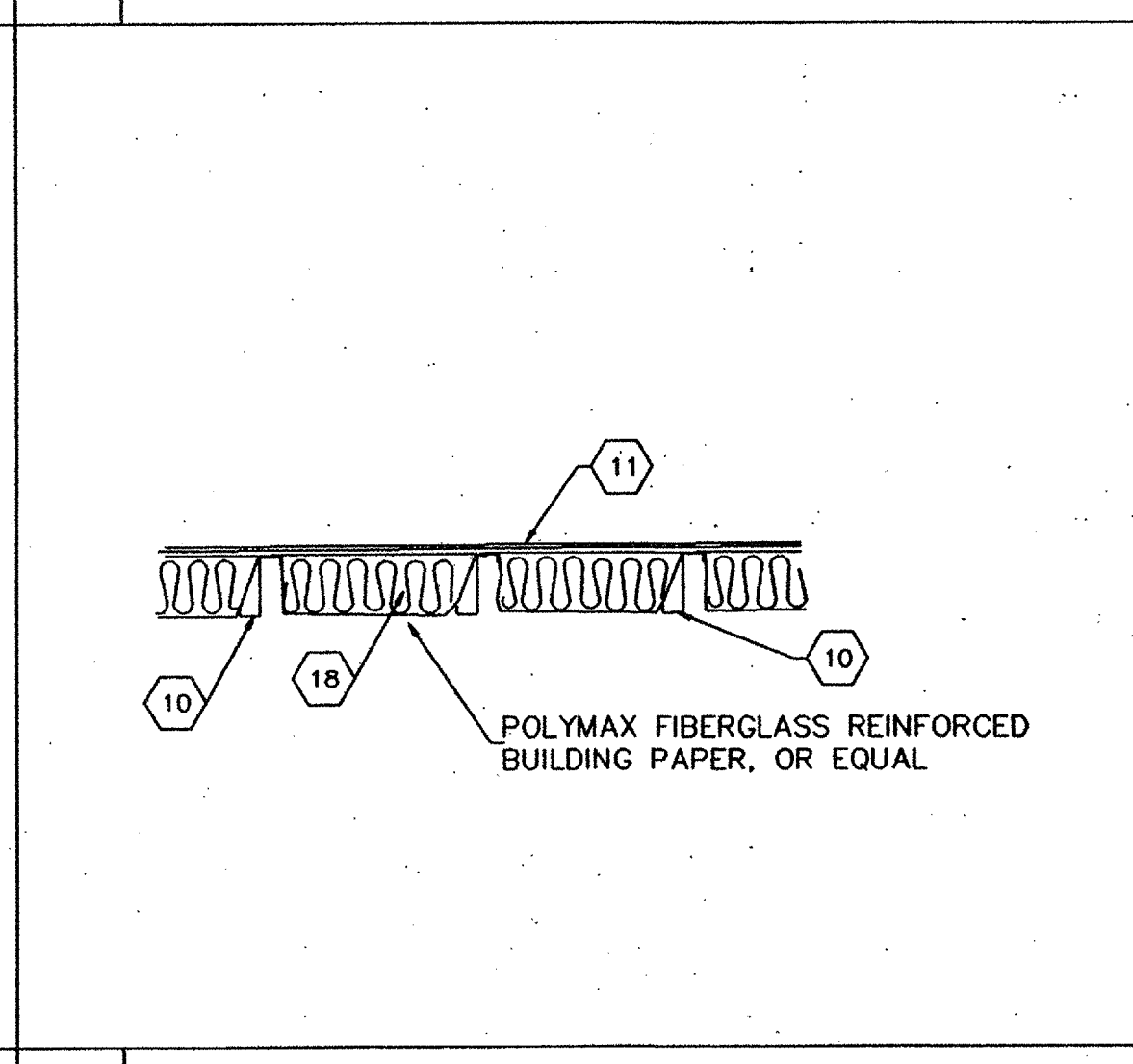
10 COLUMN CONN. @ FLOOR



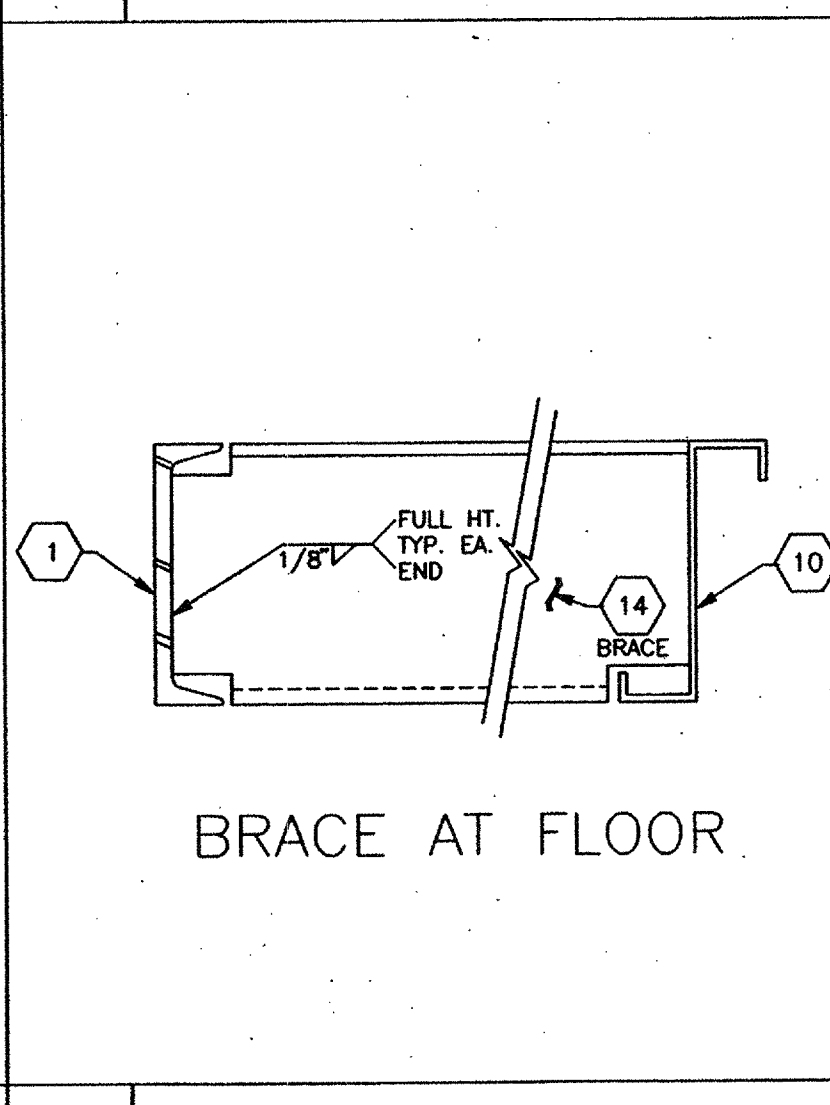
7



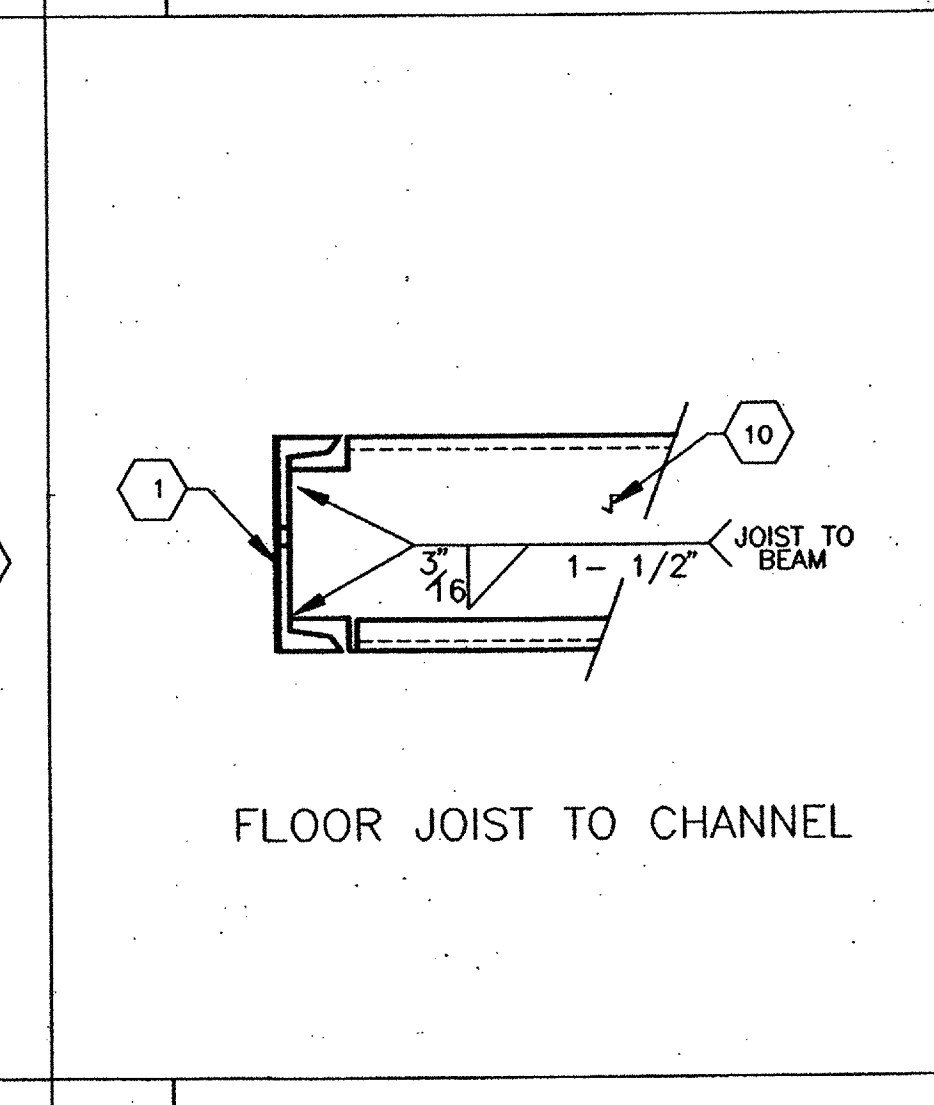
3 TYPICAL JOISTS



15 INSULATION @ FLOOR



11 BRAKE AT FLOOR



4 FLOOR JOIST DETS.

THIS DRAWING AND THE MATERIAL CONTAINED THEREIN ARE THE PROPERTY OF MSI, INC. AND SHALL NOT BE REPRODUCED, COPIED, EITHER WHOLLY OR IN PART, OR TRANSMITTED IN ANY MANNER OR BY ANY MEANS, ELECTRONIC OR MECHANICAL, INCLUDING PHOTOCOPYING, RECORDING, OR BY ANY INFORMATION STORAGE AND RETRIEVAL SYSTEM, WITHOUT THE WRITTEN CONSENT OF MSI, INC. ALL PATENTABLE AND WRITABLE INVENTIONS CONTAINED HEREIN AND ANY INFORMATION CONTAINED HEREIN AND ORIGINATING WITH MSI, INC. SHALL BE THE PROPERTY OF MSI, INC.

ARCHITECT APPROVAL  
 STRUCTURAL ENGINEERS STAMP  
 STATE AGENCY APPROVAL  
 STATE AGENCY APPROVAL  
 STATE AGENCY APPROVAL  
 STATE AGENCY APPROVAL

**MSI**  
 MODULAR STRUCTURES INTERNATIONAL, INC.  
 920 CITRUS AVE. ANAHEIM, CALIFORNIA 92807  
 PHONE: (909) 768-3035 FAX: (909) 768-1523

PROJECT  
 24'X40' 36'X40' & 48'X40'  
 MODULAR CLASSROOM BUILDING

TITLE  
 FLOOR CONSTRUCTION DETAILS

IDENTIFICATION STAMP  
 SEAL OF THE STATE ARCHITECT  
 117025  
 DATE: 1/15/98

DATE 1-9-98  
 DRAWN BY R.D.L.  
 SCALE NONE  
 APPROVED  
 REVISIONS

MSI PROJECT  
 100073  
 DATE: JAN 15 1998

SHEET NO.  
 S-11