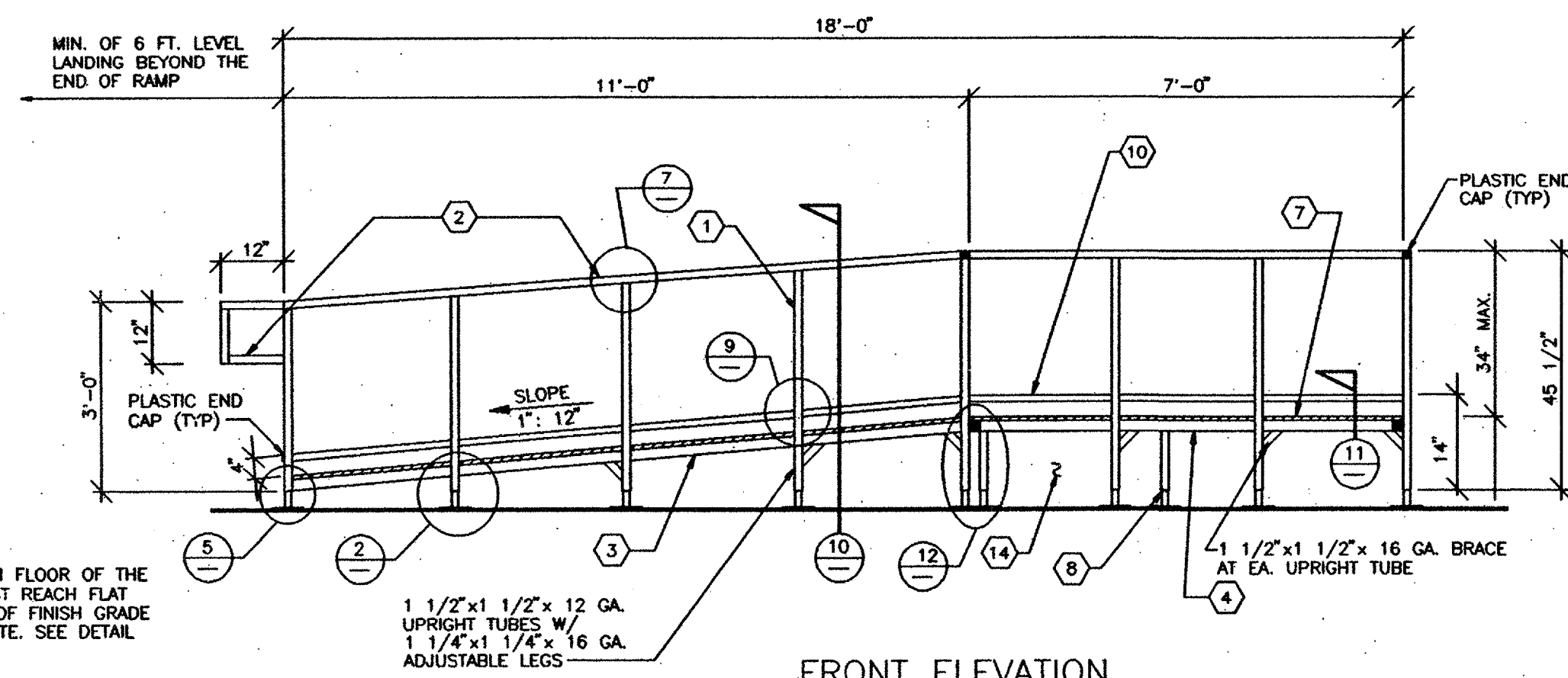
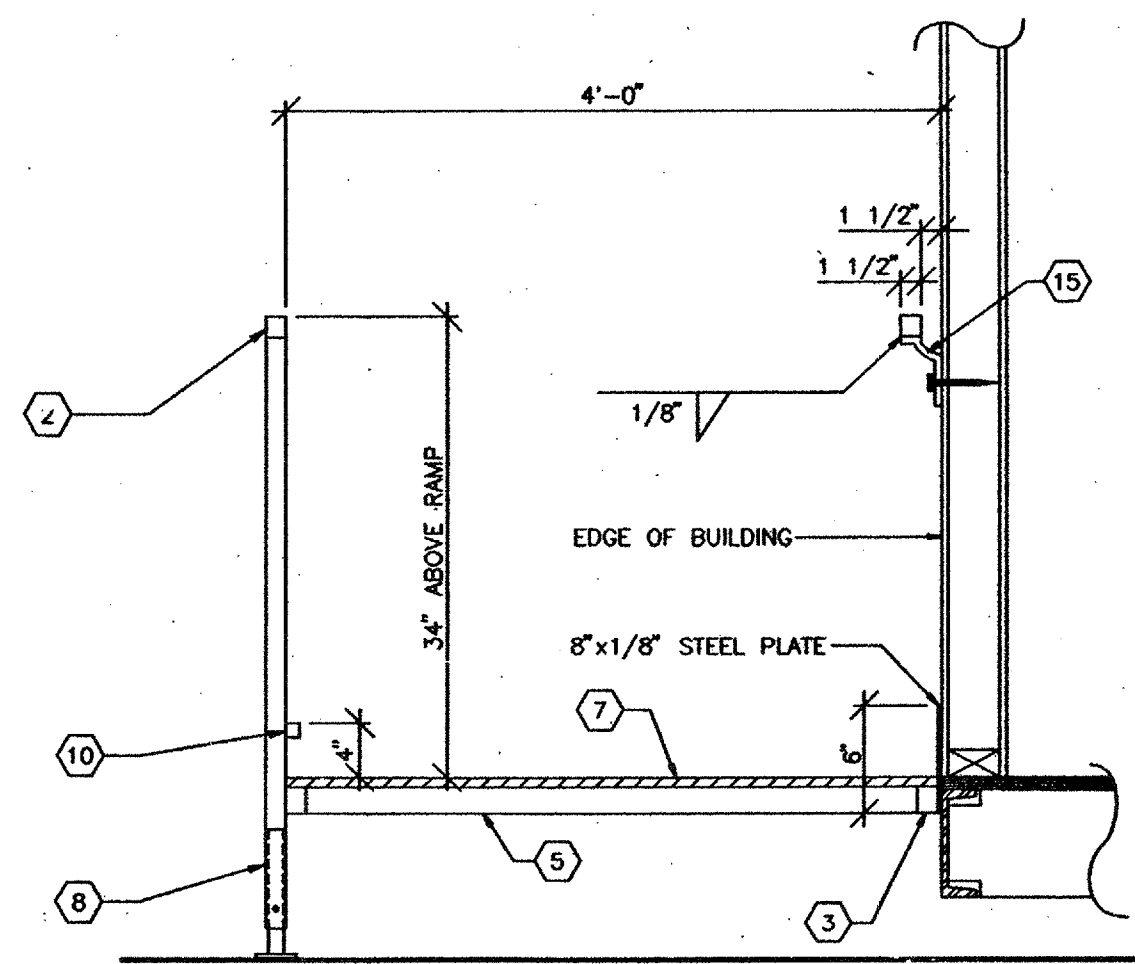


FRAMING PLAN
SCALE: 1/2" = 1'-0"



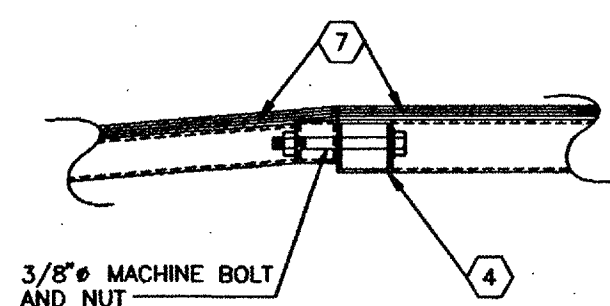
FRONT ELEVATION
SCALE: 1/2" = 1'-0"

THE FINISH FLOOR OF THE RAMP MUST REACH FLAT SURFACE 1/2" FINISH GRADE OF THE SITE. SEE DETAIL 3 AND 5.



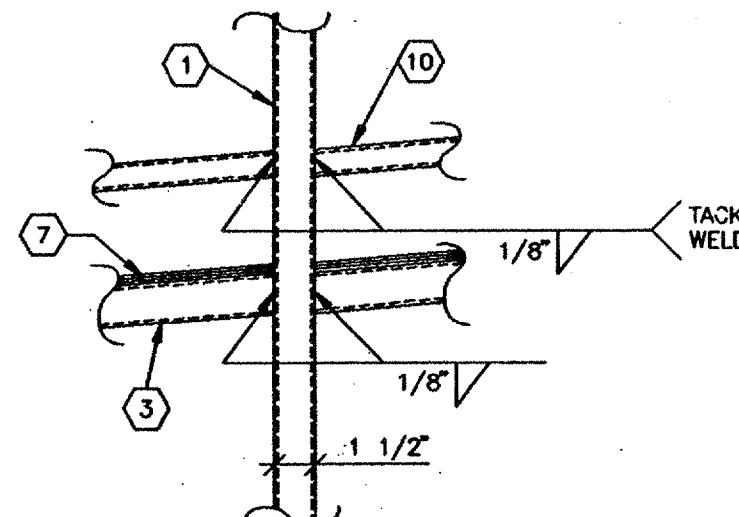
SECTION AT RAMP

10



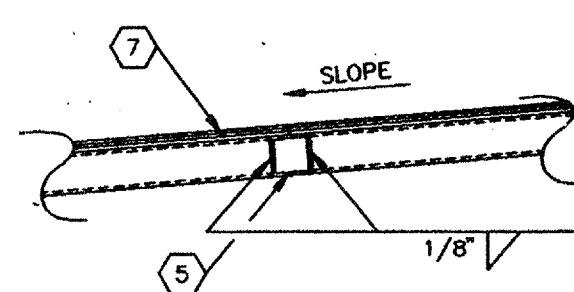
RAMP / LANDING TRANSITION

8



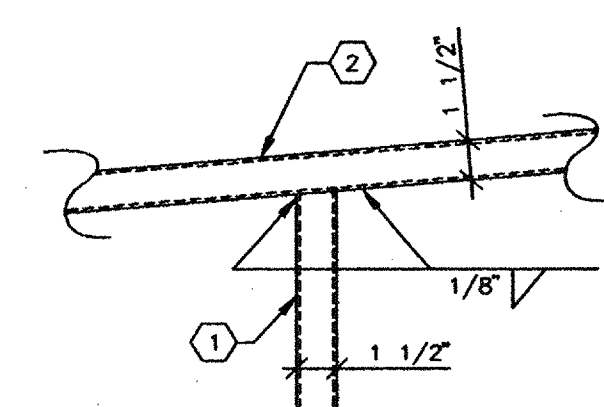
VERTICAL POST CONN.

9



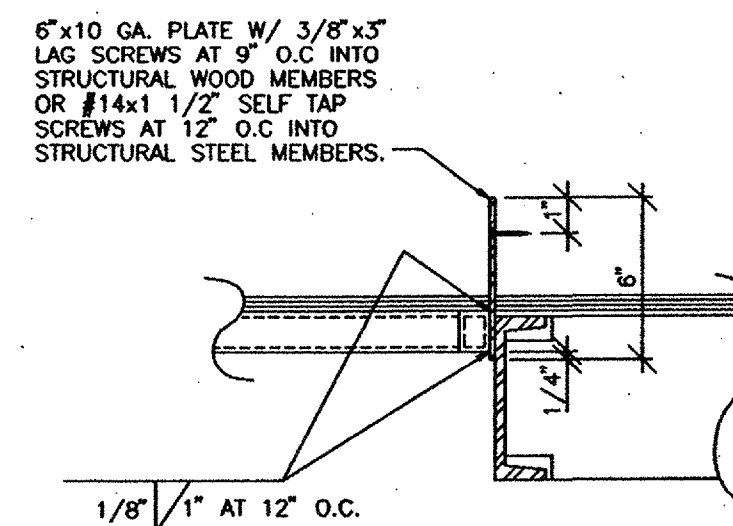
DECK & JOIST CONN.

6



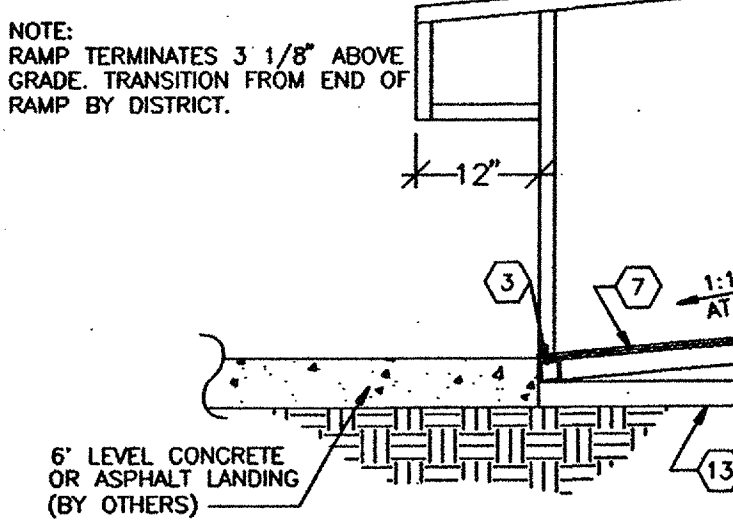
POST TO HANDRAIL

7



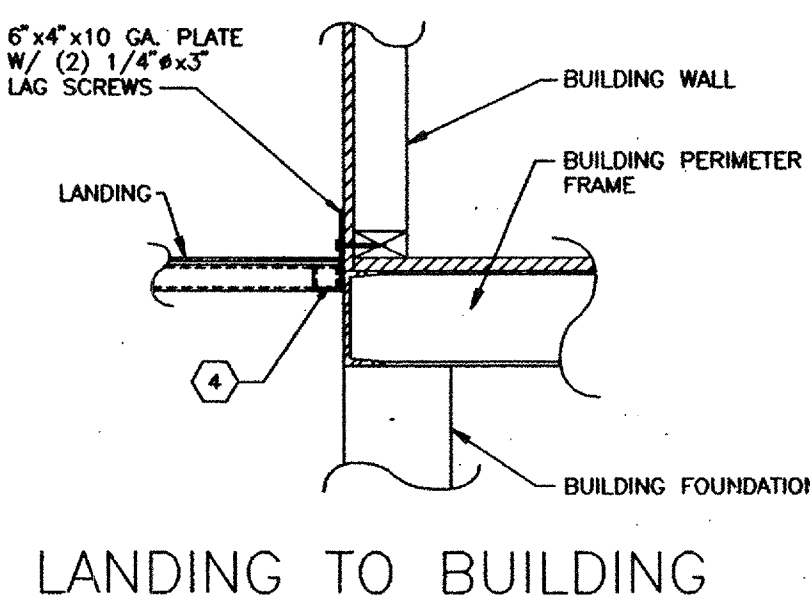
RAMP TO BUILDING

4



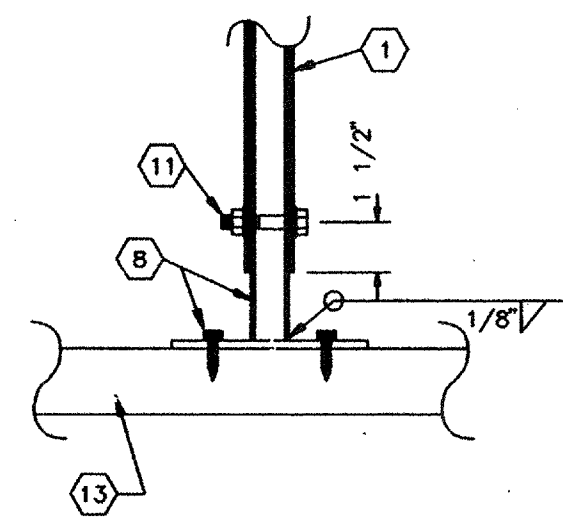
CONC. LANDING TO RAMP

5



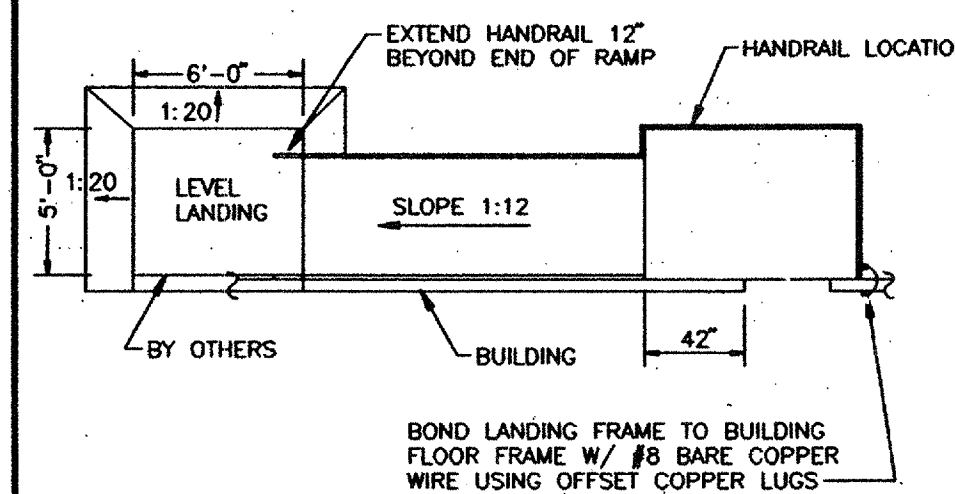
LANDING TO BUILDING

1



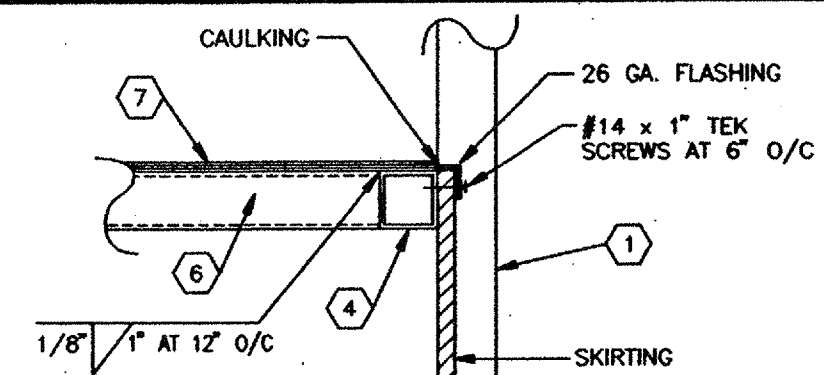
BASE

2



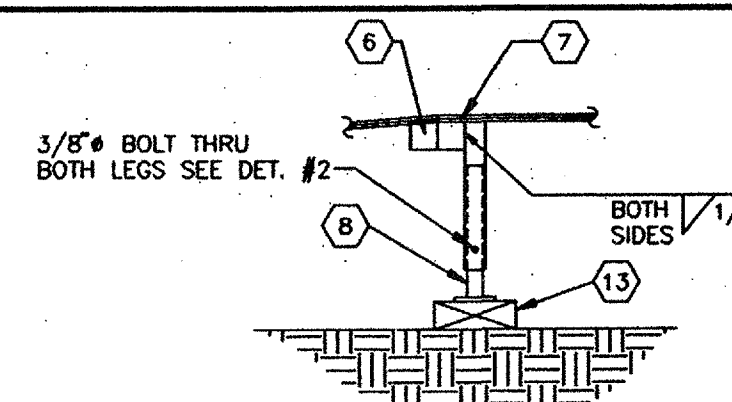
HANDRAIL LOCATIONS

3



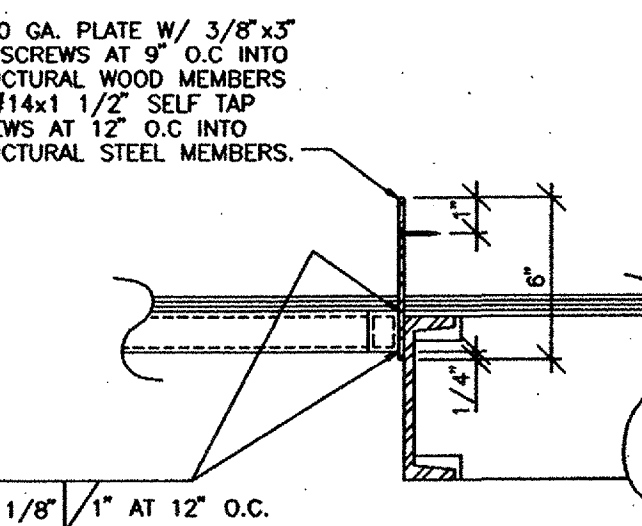
SKIRT FLASHING

11



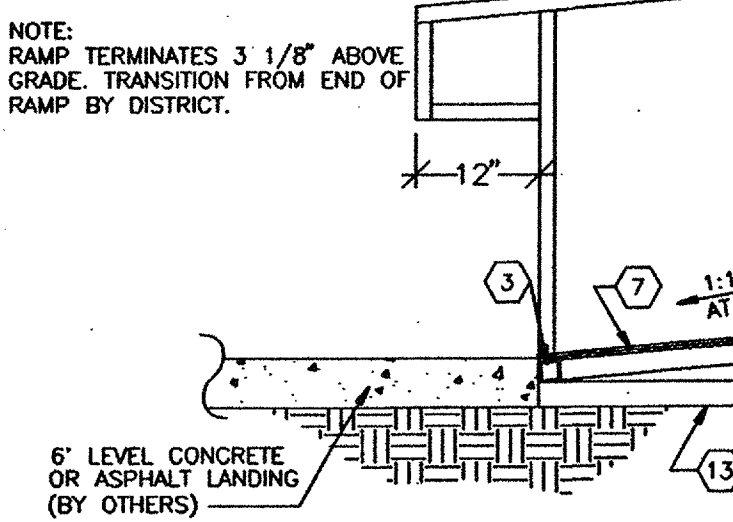
BASE LEG

12



RAMP TO BUILDING

4



CONC. LANDING TO RAMP

5

KEY NOTES

1. UPRIGHT TUBE - 1 1/2" x 1 1/2" x 12 GA. SQ. TUBE. (Fy = 39 ksi)
2. HANDRAIL TUBE - 1 1/2" x 1 1/2" x 16 GA. SQ. TUBE. (Fy = 39 ksi)
3. RAMP PERIMETER TUBE - 1 1/2" x 1 1/2" x 16 GA. SQ. TUBE
4. LANDING PERIMETER TUBE - 2" x 2" x 16 GA. SQ. TUBE
5. RAMP CROSS TUBE - 1 1/2" x 1 1/2" x 16 GA. SQ. TUBE
6. LANDING CROSS TUBE - 2" x 2" x 16 GA. SQ. TUBE
7. 3/4" PLYWOOD DECK W/ NON SKID SURFACE (TUF TREAD OR EQUAL)
8. ADJUSTABLE LEGS - 1 1/4" x 1 1/4" 16 GA. SQ. TUBE W/ 3"x6"x1/4" THK. BASE PLATE WELDED TO LEG BASE PLATE TO HAVE (2) 5/16" HOLES FOR 1/4" LAG BOLTS.
9. SUPPORT PLATE - 1 1/4" x 1/8" THICK PLATE
10. WHEELCHAIR RAIL - 1" x 1" SQ. TUBE TACK WELDED TO UPRIGHT MEMBERS.
11. 3/8" DIA. MACHINE BOLTS.
12. 6"x10"x10GA. PLATE W/ (2) 1/4"x3" LAG SCREWS.
13. CONT. SILL PLATE 2x6 P.T.H.F.
14. SKIRTING - SAME AS BUILDING FINISH
15. HANDRAIL MOUNTING BRACKET W/ 3/8" x 3" LAG BOLT TO STUD OR BLOCK.
16. DRIVE 1" DIA. x 15" G.I. PIPE AT 10'-0" MAX. DRILL SILL PLATE 1 1/2" DIA. MAX. HOLE. PIPE MAY BE DRIVEN AT A MAX. OF 45° ANGLE W/ VERTICAL.
17. THE STRENGTH OF STEEL TUBES IS 46000 PSI OR HIGHER.

THIS DRAWING AND THE MATERIAL CONTAINED THEREIN ARE THE PROPERTY OF MSI, INC. AND SHALL NOT BE REPRODUCED, COPIED, OR OTHERWISE DISSEMINATED IN WHOLE OR IN PART WITHOUT THE WRITTEN CONSENT OF MSI, INC. ALL PATENTABLE AND WRITABLE INVENTIONS OF MSI, INC. ARE RESERVED AND WILL BE PROTECTED BY PATENT AND COPYRIGHT. MATERIAL CONTAINED HEREIN AND ORIGINATING WITH MSI, INC. SHALL BE THE PROPERTY OF MSI, INC.

ARCHITECT APPROVAL
STRUCTURAL ENGINEERS STAMP
LICENSE EXPIRES 8-30-2000

STATE AGENCY APPROVAL
PROJECT
24'x40', 36'x40', & 48'x40' MODULAR CLASSROOM BUILDING
TITLE
RAMP & LANDING PLANS & DETAILS

DATE 1-9-98
DRAWN BY R.D.L.
SCALE NONE
APPROVED
REVISIONS
STATE AGENCY APPROVAL
DATE JAN 15 1998

MSI
MODULAR STRUCTURES INTERNATIONAL, INC.
290 CROSS ST. REDDING, CALIFORNIA 96001
PHONE: (909) 789-3055 FAX: (909) 789-1923

ARCHITECT APPROVAL

STATE AGENCY APPROVAL

JOB #
DATE 1-9-98
DRAWN BY R.D.L.
SCALE NONE
APPROVED
REVISIONS
STATE AGENCY APPROVAL
DATE JAN 15 1998
SHEET NO. R-1

PC-100073