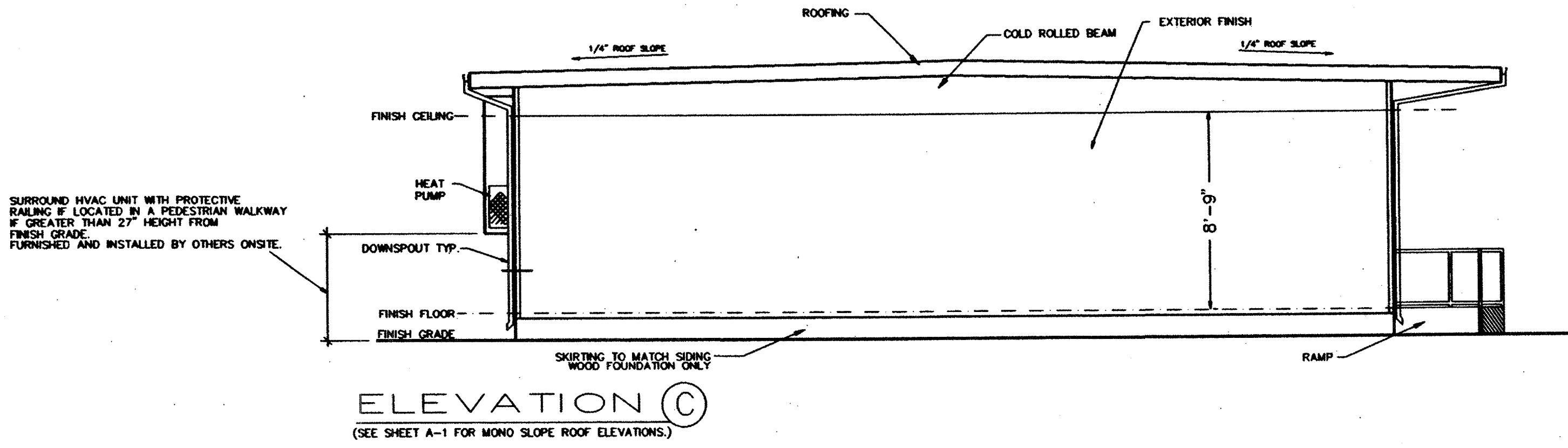
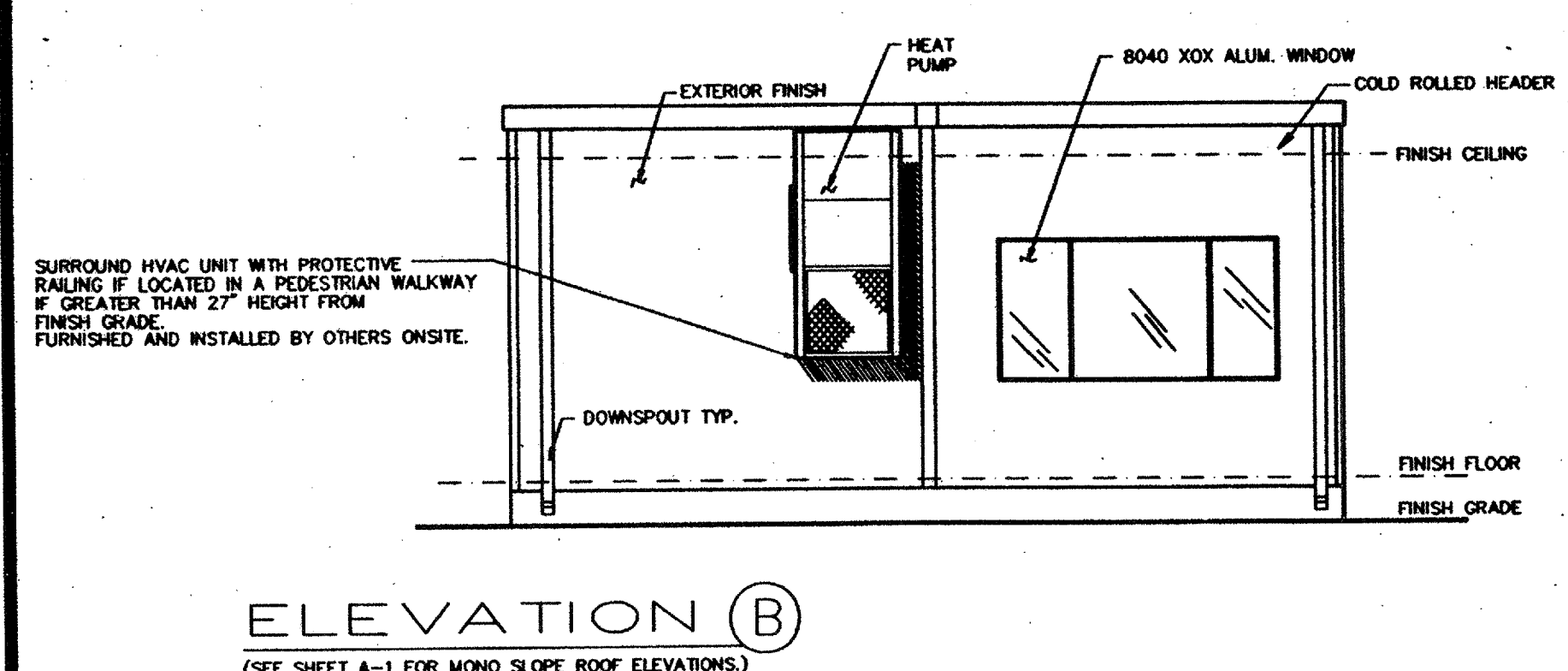


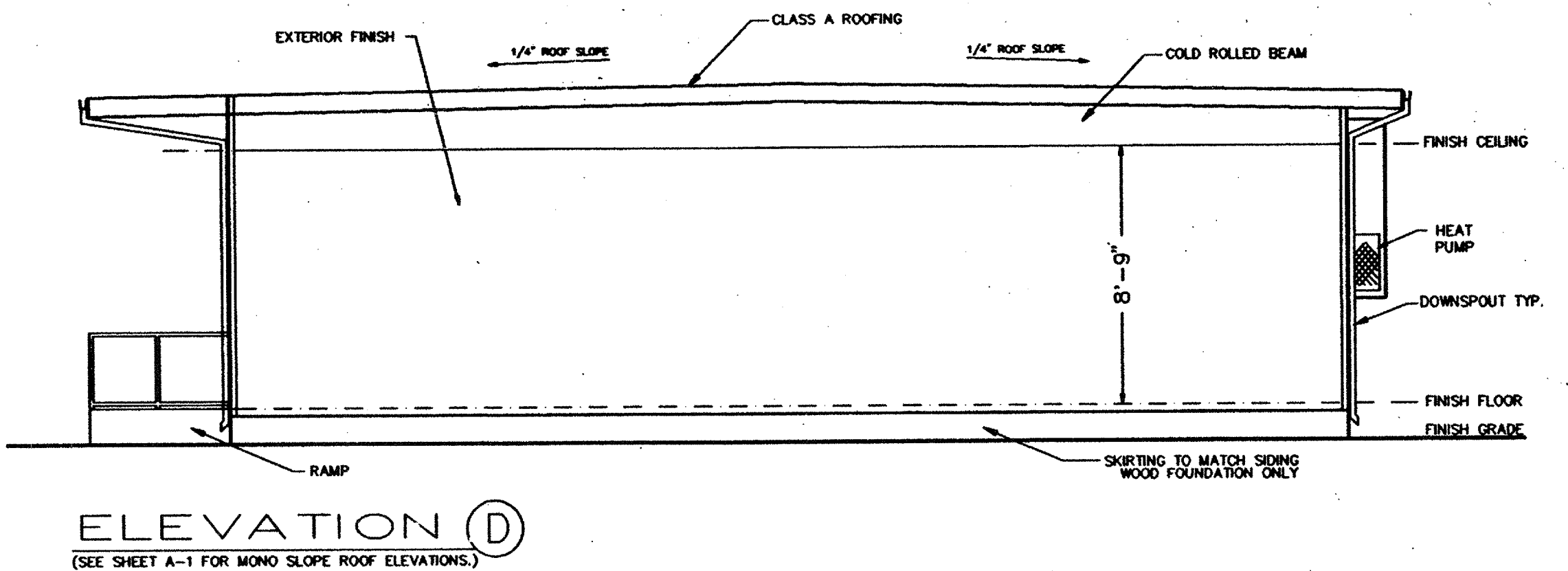
ELEVATION (A)
(SEE SHEET A-1 FOR MONO SLOPE ROOF ELEVATIONS.)



ELEVATION (C)
(SEE SHEET A-1 FOR MONO SLOPE ROOF ELEVATIONS.)



ELEVATION (B)
(SEE SHEET A-1 FOR MONO SLOPE ROOF ELEVATIONS.)



ELEVATION (D)
(SEE SHEET A-1 FOR MONO SLOPE ROOF ELEVATIONS.)

THIS DRAWING AND THE MATERIAL CONTAINED THEREIN ARE THE PROPERTY OF M.S.I. INC. AND ARE TO BE USED DIRECTLY OR INDIRECTLY AND SHALL NOT BE USED IN WHOLE OR IN PART FOR ANY OTHER PROJECT OR PART THEREOF WITHOUT THE WRITTEN CONSENT OF M.S.I. INC. ALL PATENTABLE MATERIAL CONTAINED HEREIN AND ORIGINATING WITH M.S.I. INC. IS HEREBY GRANTED TO THE USER OF THIS DRAWING UNDER LICENSE HEREIN AND ORIGINATING WITH M.S.I. INC. SHALL BE THE PROPERTY OF M.S.I. INC.

MSI
MODULAR STRUCTURES INTERNATIONAL, INC.
920 CITRUS AVE. RIVERSIDE, CALIFORNIA 92507
PHONE: (909) 788-3035 FAX: (909) 788-1923

PC-

ARCHITECT APPROVAL

STRUCTURAL ENGINEERS STAMP

STATE AGENCY APPROVAL

STATE AGENCY APPROVAL

STATE AGENCY APPROVAL

PROJECT
24'X40' MODULAR CLASSROOM BUILDING

TITLE
EXTERIOR ELEVATIONS (DUAL PITCH ROOF)

DATE 12-8-97
DRAWN BY R.D.L.
SCALE
APPROVED

REVISIONS

SHEET NO. A-2-24

#110