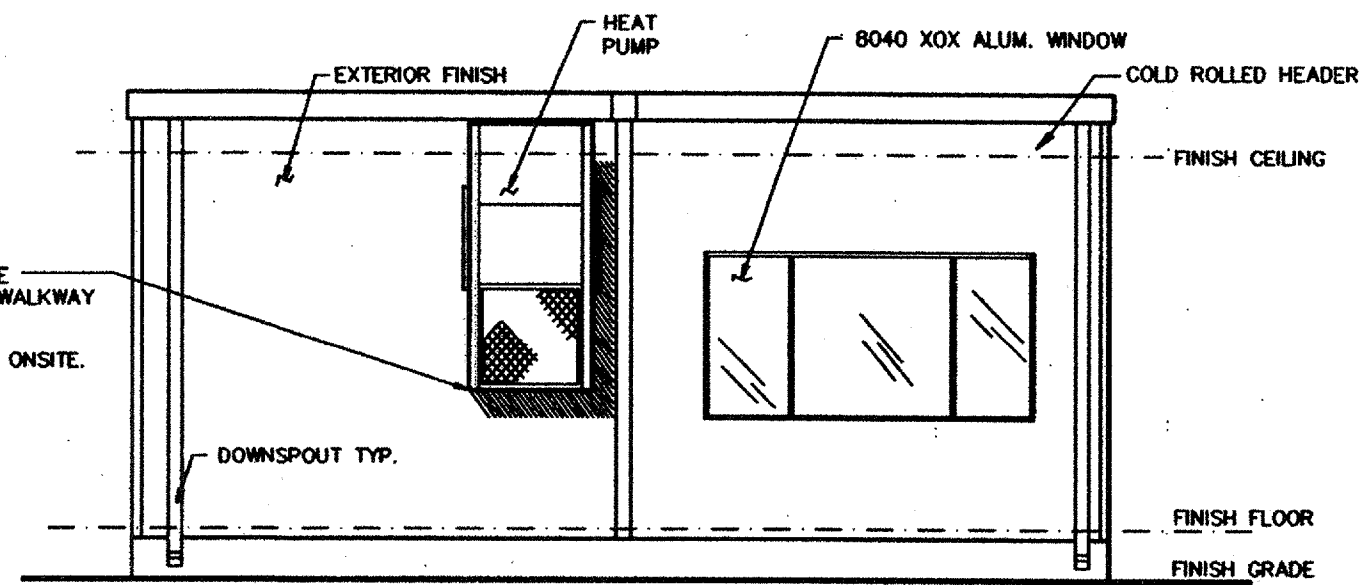
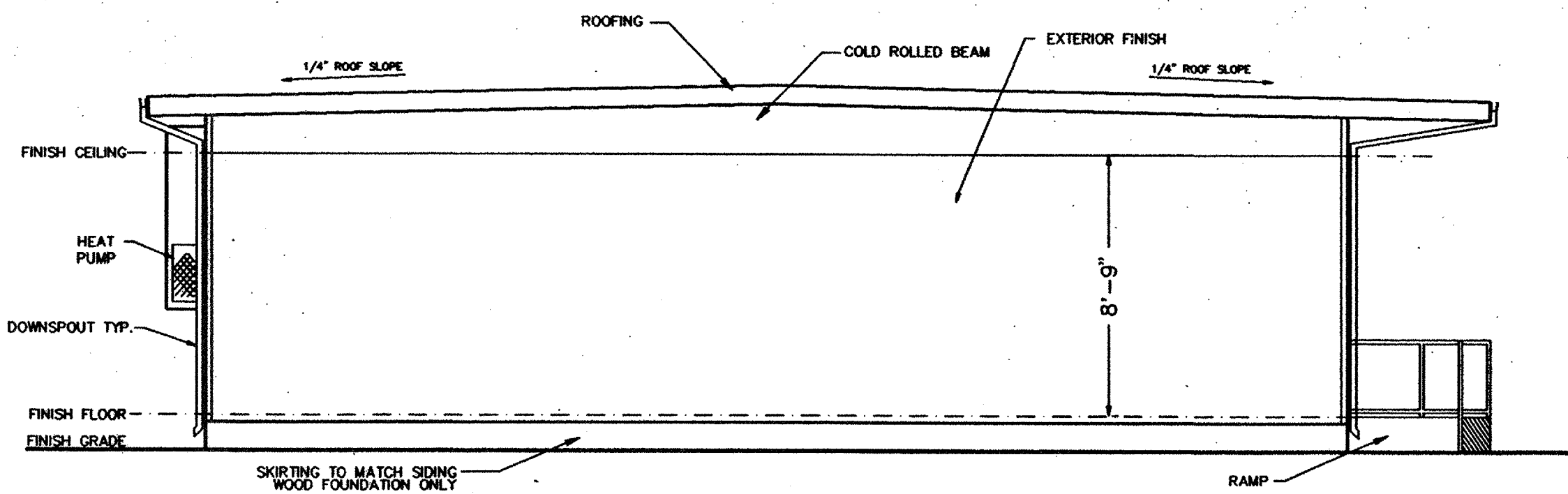


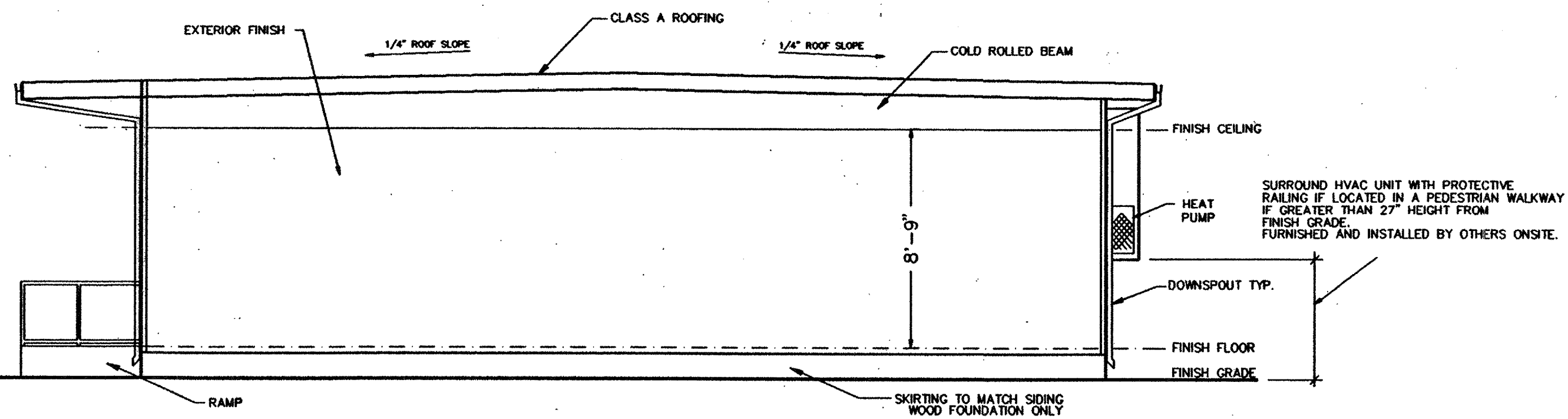
ELEVATION A



ELEVATION B



ELEVATION C

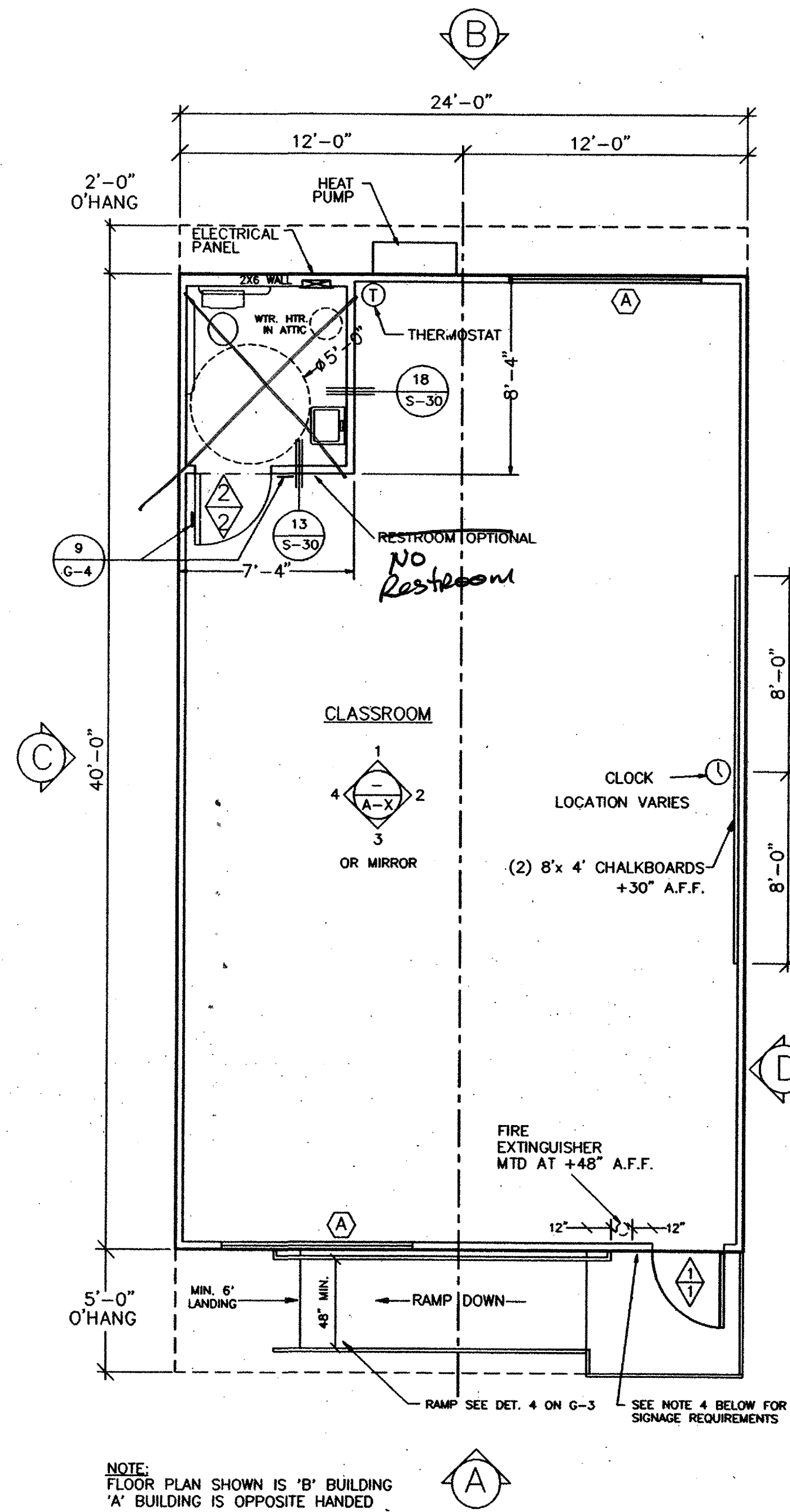


ELEVATION D

NOTE: PROVIDE FIRE BLOCKING PER C.B.C. 708

FLOOR PLAN

- ◊ INDICATES DOOR TYPE SEE SHEET G-1
- ◻ INDICATES HARDWARE TYPE
- Ⓐ INDICATES WINDOW TYPE- SEE SHEET G-1



NOTE: FLOOR PLAN SHOWN IS 'B' BUILDING 'A' BUILDING IS OPPOSITE HANDED

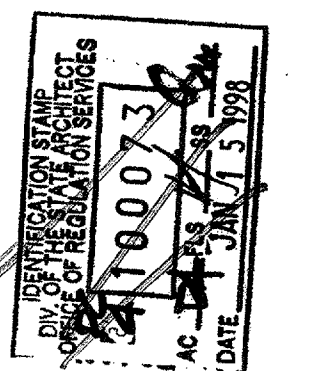
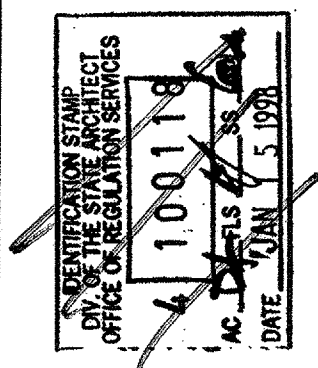
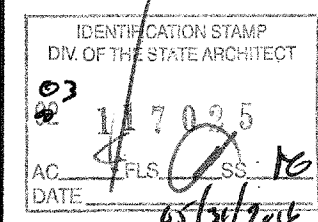
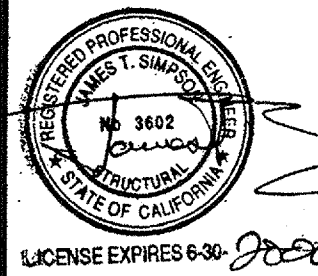
NOTES:

1. MANUFACTURER SHALL MECHANICALLY ATTACH METAL TAG TO EXTERIOR OF BUILDING SHOWING OSA APPLICATION NUMBER, MANUFACTURERS NAME, UNIT SERIAL NUMBER, DESIGN LIVE LOADS FOR FLOOR AND ROOF, AND THE DESIGN WIND LOAD.
2. WALL AND CEILING FINISHES SHALL BE MIN. CLASS I MATERIAL.
3. FIBERGLAS INSULATION SHALL HAVE THE FOLLOWING: FLAME SPREAD 0-25 SMOKE DEVELOPED, FUEL CONTRIBUTED 0-450
4. SIGNAGE REQUIRED PER APPLICABLE CODES LISTED ON SHEET T-1 PROVIDED AND INSTALLED BY OTHERS ONSITE. SIM. TO DET. 9 ON G-4.
5. ANY ROOM HAVING AN OCCUPANT LOAD OF 50 OR MORE WHERE FIXED SEATS ARE NOT INSTALLED, AND WHICH IS USED FOR CLASSROOM, ASSEMBLY, DINING OR SIMILAR PURPOSE SHALL HAVE THE CAPACITY OF THE ROOM POSTED IN A CONSPICUOUS PLACE NEAR THE MAIN EXIT OF THE ROOM. POSTING SHALL BE BY MEANS OF A DURABLE SIGN HAVING CONTRASTING COLOR FROM THE BACKGROUND TO WHICH IT IS ATTACHED. (OCCUPANT LOAD 48)
6. MAXIMUM EFFORT TO OPERATE DOORS SHALL NOT EXCEED 8-1/2 POUNDS FOR EXTERIOR DOORS AND 5 POUNDS FOR INTERIOR DOORS, SUCH PULL OR PUSH EFFORT BEING APPLIED AT RIGHT ANGLES TO HINGED DOORS AND AT THE CENTER PLANE OF SLIDING OR FOLDING DOORS. COMPENSATING DEVICES OR AUTOMATIC DOOR OPERATORS MAY BE UTILIZED TO MEET THE ABOVE STANDARDS. WHEN FIRE DOORS ARE REQUIRED, THE MAXIMUM EFFORT TO OPERATE THE DOOR MAY BE INCREASED NOT TO EXCEED 15 POUNDS.

THIS DRAWING AND THE MATERIAL CONTAINED THEREIN ARE THE PROPERTY OF M.S.I. INC. AND SHALL NOT BE REPRODUCED, COPIED OR OTHERWISE DISPOSED OF IN ANY MANNER WITHOUT THE WRITTEN CONSENT OF M.S.I. INC. FOR THE MAKING OF DRAWINGS, PRINTS, APPARATUS OR FOR THE PURPOSE OF FURNISHING ANY INFORMATION OR FOR THE MAKING OF ANY INSTRUMENTS OR PATENTABLE MATERIAL CONTAINED HEREIN AND ORIGINATING WITH M.S.I. INC. SHALL BE THE PROPERTY OF M.S.I. INC.

MSI
MODULAR STRUCTURES INTERNATIONAL, INC.
930 CITRUS AVE. ROBERSON, CALIFORNIA 92077
PHONE: (909) 788-2025 FAX: (909) 788-1233

PC-100073



ARCHITECT APPROVAL

STRUCTURAL ENGINEERS STAMP

STATE AGENCY APPROVAL

STATE AGENCY APPROVAL

STATE AGENCY APPROVAL

PROJECT
24'X40' MODULAR CLASSROOM BUILDING

TITLE
FLOOR PLAN & EXTERIOR ELEVATIONS

JOB #

DATE 1-9-98

DRAWN BY R.D.L.

SCALE

APPROVED

REVISIONS

SHEET NO.

A-1-24

#110