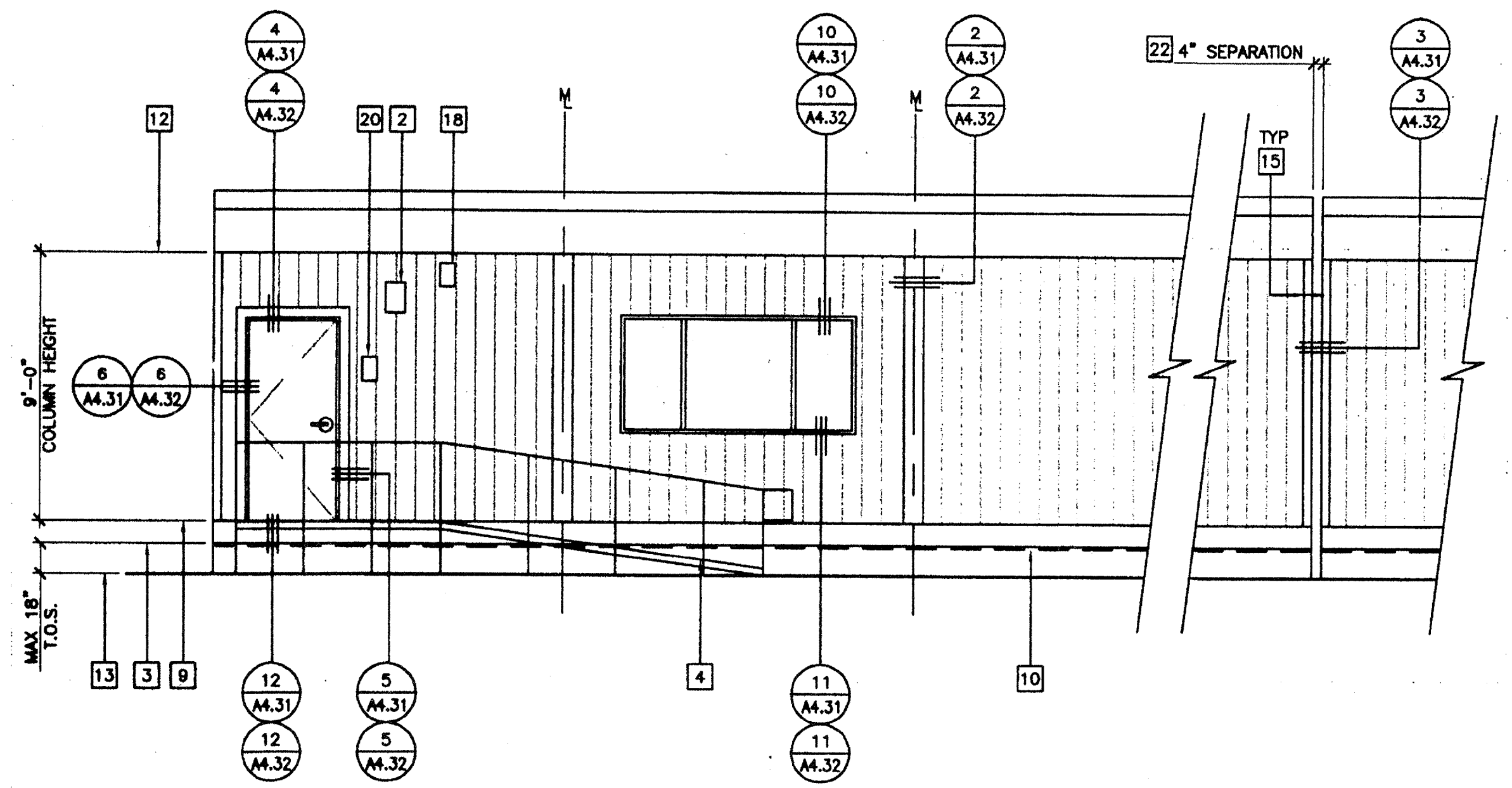
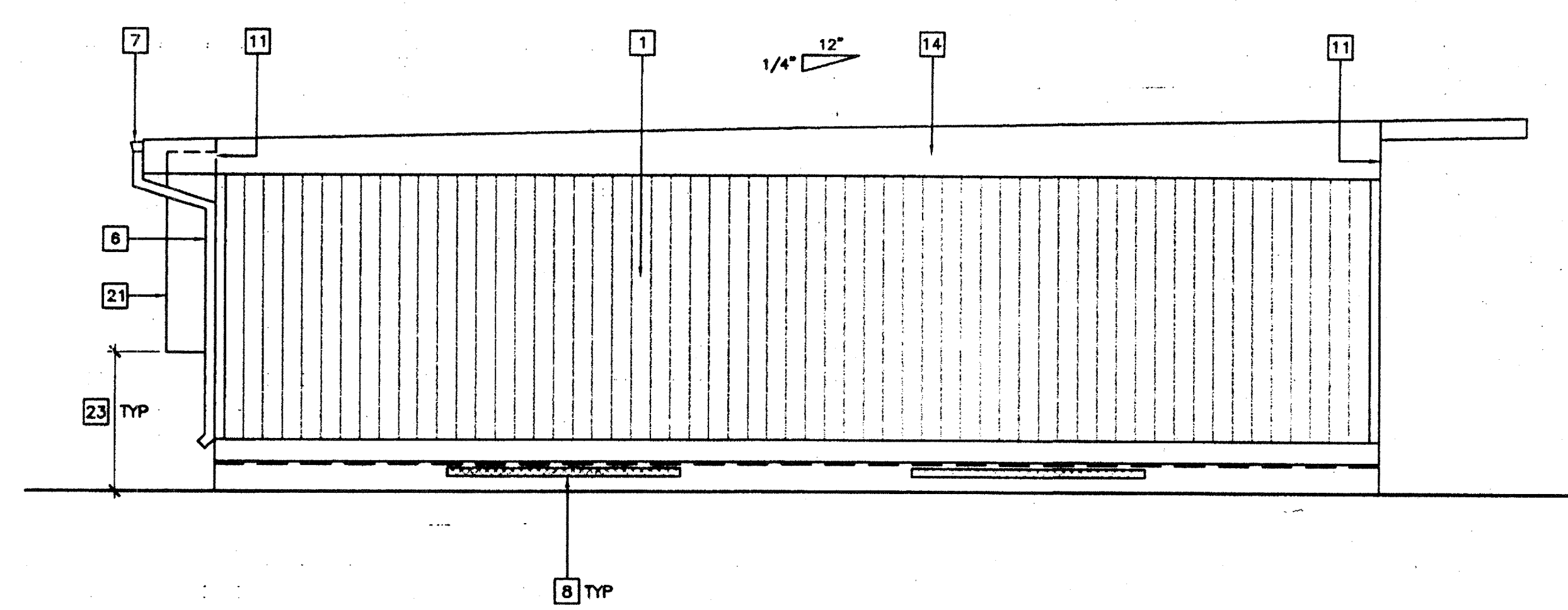


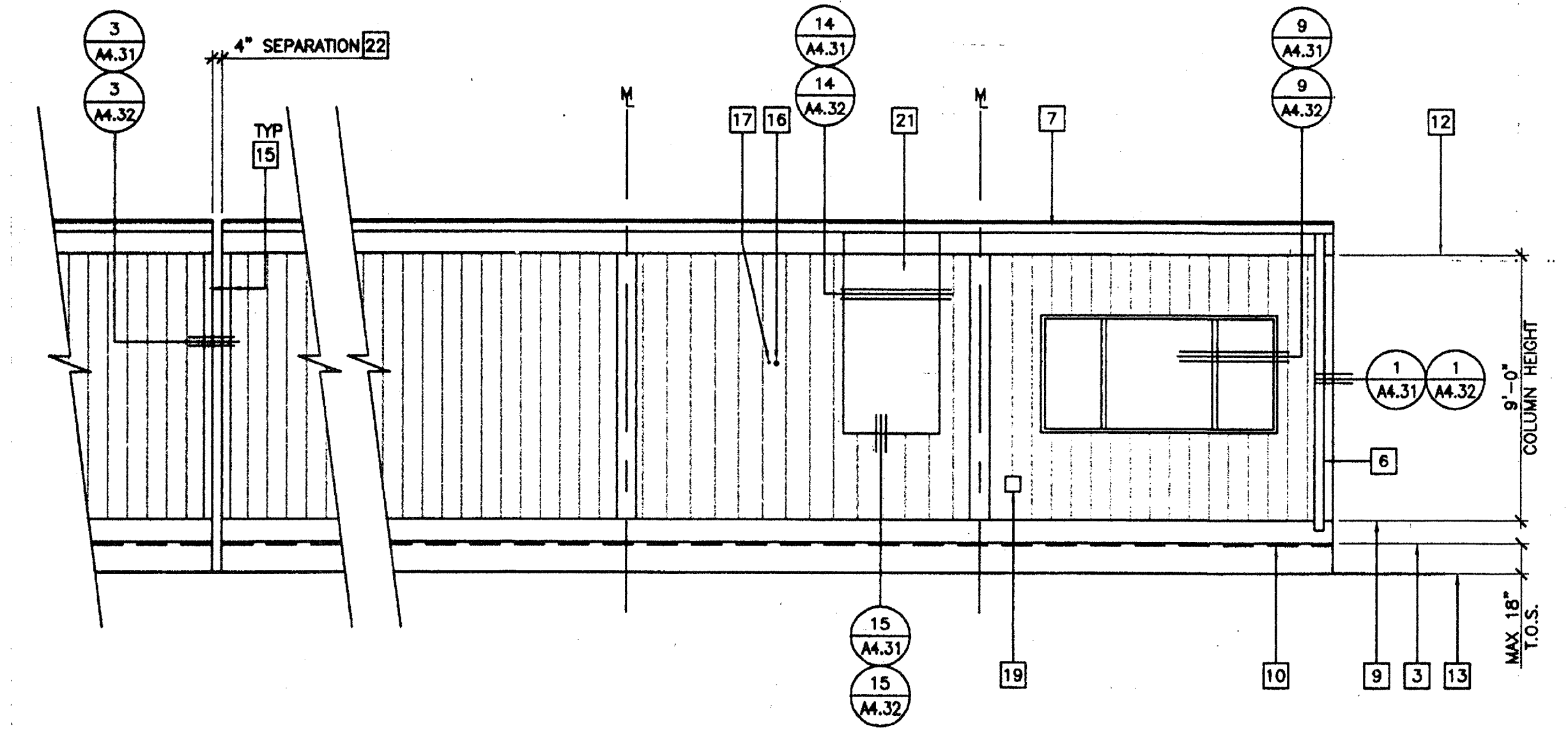
FILE PATH: 2440-A4.02.DWG



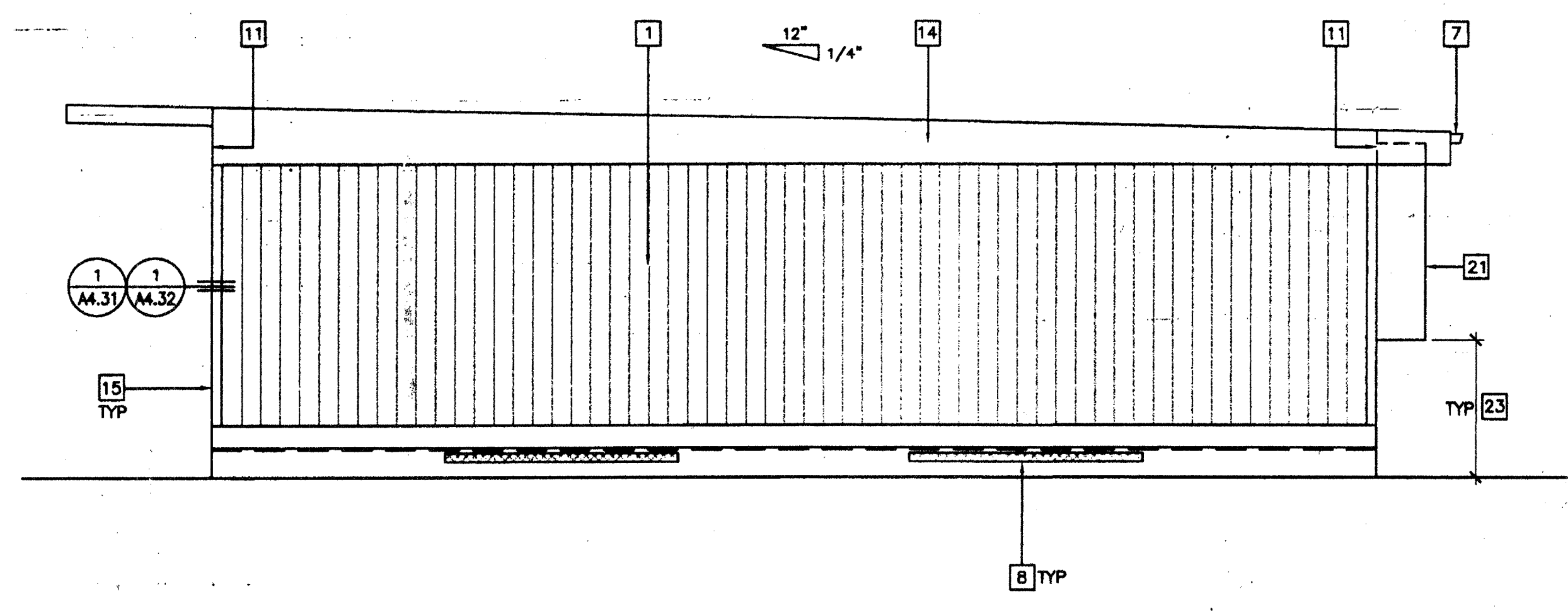
1 FRONT ELEVATION



2 LEFT SIDE ELEVATION



3 REAR ELEVATION



4 RIGHT SIDE ELEVATION

KEY NOTES

- 1 TYPICAL EXTERIOR FINISH (SEE EXTERIOR FINISH SCHEDULE BELOW)
- 2 EXTERIOR LIGHT FIXTURE (EL)
- 3 TOP OF SKIRTING (T.O.S.)
- 4 RAMP AND LANDING. SEE SHEETS R1 THRU R4 RAMP
- 5 NOT USED
- 6 DOWNSPOUT FASTEN TO BUILDING TYPICAL (3) PLACES
- 7 CONTINUOUS GUTTER WITH DOWNSPOUT (LOCATION OF DOWNSPOUT SHOWN ON ROOF PLAN - A2)
- 8 FOUNDATION VENT (SEE FOUNDATION PLAN - F1)
- 9 FINISH FLOOR LINE
- 10 FLOOR BEAM (STR)
- 11 ROOF HEADER (STR)
- 12 TOP OF COLUMN
- 13 FINISH GRADE
- 14 ROOF BEAM (STR)
- 15 COLUMN (STR)
- 16 ELECTRICAL STUB-OUT (EL)
- 17 GROUND STUB-OUT (EL)
- 18 J-BOX FOR EXTERIOR FIRE ALARM HORN (EL)
- 19 GUTTER BOX (EL)
- 20 SIGNAGE PROVIDED AND INSTALLED BY DISTRICT PRIOR TO OCCUPANCY. SEE SHEET A6.01
- 21 HVAC UNIT (HV)
- 22 4" SEPARATION AS REQUIRED PER FLOOR PLAN
- 23 IF HVAC UNIT IS LOCATED IN ANY PATH OF TRAVEL OR CIRCULATION AREA AND HEIGHT FROM GRADE TO BOTTOM OF UNIT EXCEEDS 27' THEN PROTECTION MUST BE PROVIDED BY DISTRICT PRIOR TO OCCUPANCY

EXTERIOR FINISH SCHEDULE

NOTE: SEE SPECIFICATIONS FOR DETAILED DESCRIPTION OF FINISH OPTIONS.

STANDARD - 5/8" PLYWOOD SIDING

OPTIONAL - 5/16" GROOVED FIBER CEMENT BOARD

OPTIONAL - 5/16" FIBER CEMENT BOARD WITH TEXTURED ELASTOMERIC COATING SYSTEM

DATE SIGNED
APR 30 2003

PC
CBC 2001

EXTERIOR ELEVATIONS

26 GA/MONO PITCH
SCALE: 1/4" = 1'-0"

IDENTIFICATION STAMP
DIV. OF THE STATE ARCHITECT
OFFICE OF REGULATION SERVICES

04 105299
DATE MAY 2 2003

IDENTIFICATION STAMP
DIV. OF THE STATE ARCHITECT
OFFICE OF REGULATION SERVICES

03 117025
DATE MAY 2 2003

4012-125

REVISIONS	Electrical Engineer's Seal	Mechanical Engineer's Seal	PC Professional of Record Seal	Architect's Seal	IDENTIFICATION STAMP DIV. OF THE STATE ARCHITECT OFFICE OF REGULATION SERVICES	PROJECT NUMBER:	© MODTECH, INC. 2002	DRAWN BY: STKP-70 DATE: 05-22-03

Electrical Engineer's Seal

Mechanical Engineer's Seal

PC Professional of Record Seal

Architect's Seal

IDENTIFICATION STAMP
DIV. OF THE STATE ARCHITECT
OFFICE OF REGULATION SERVICES

PG-04
104801
DATE: 5/22/03

2830 BARRETT AVENUE PERRIS, CALIF. 92571 PH (909) 943-4014 FAX (909) 940-0427

MODTECH™

2830 BARRETT AVENUE PERRIS, CALIF. 92571 PH (909) 943-4014 FAX (909) 940-0427

PROJECT NUMBER: 4012-125

© MODTECH, INC. 2002

DRAWN BY: STKP-70
DATE: 05-22-03

CHECKED BY: DATE:

MODTECH Index No.

EXTERIOR ELEVATIONS 26 GA MONO PITCH

A4.02

PROJECT NO. PG-04-104801