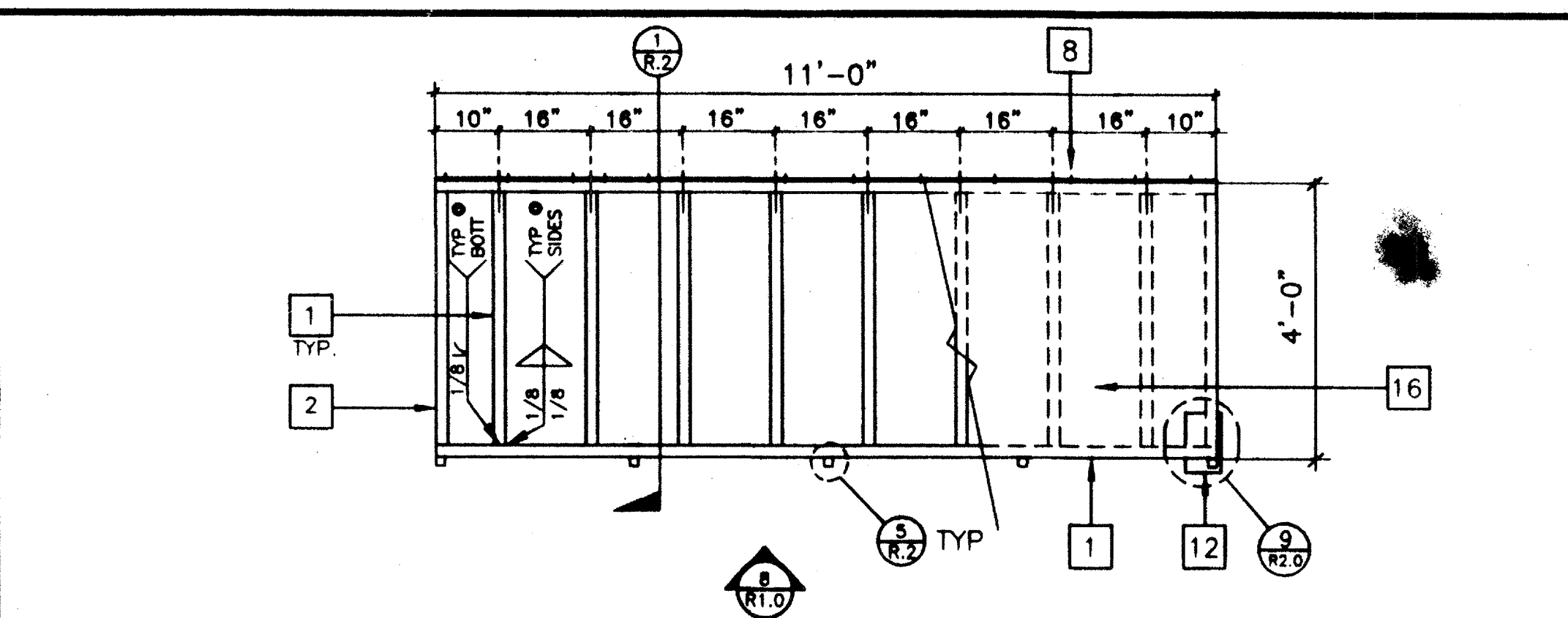
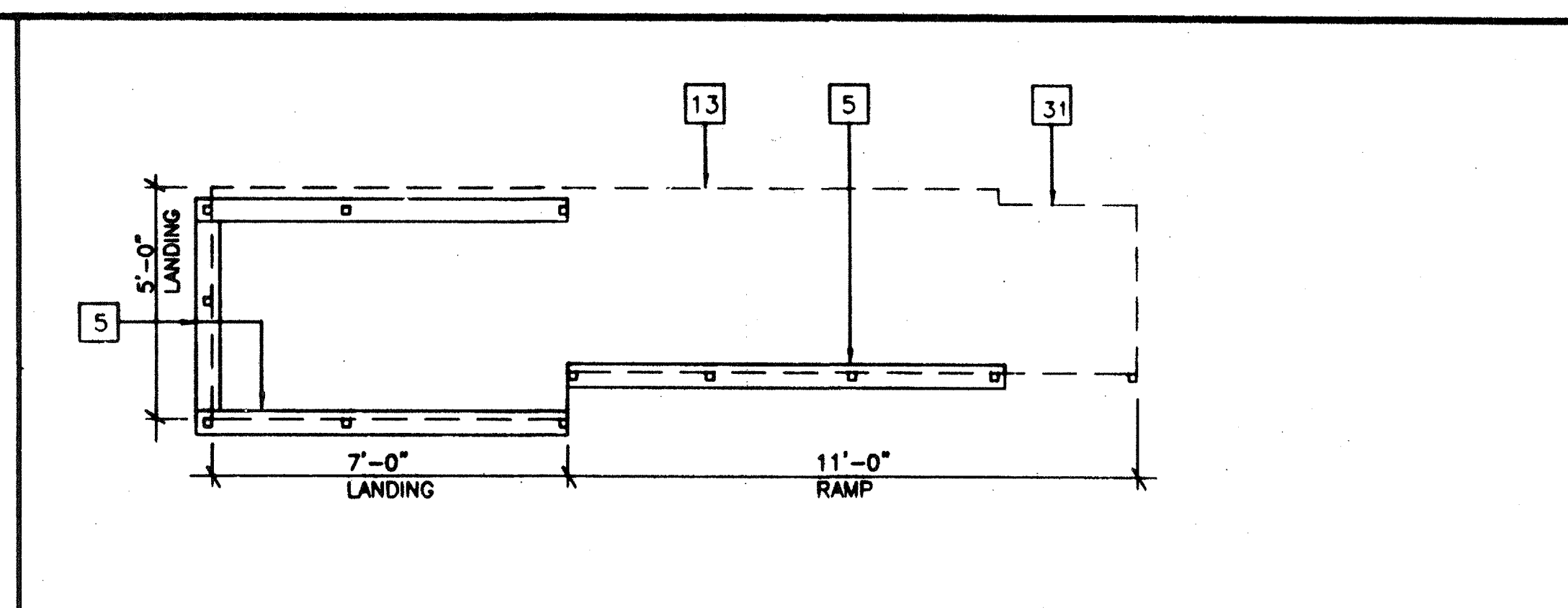


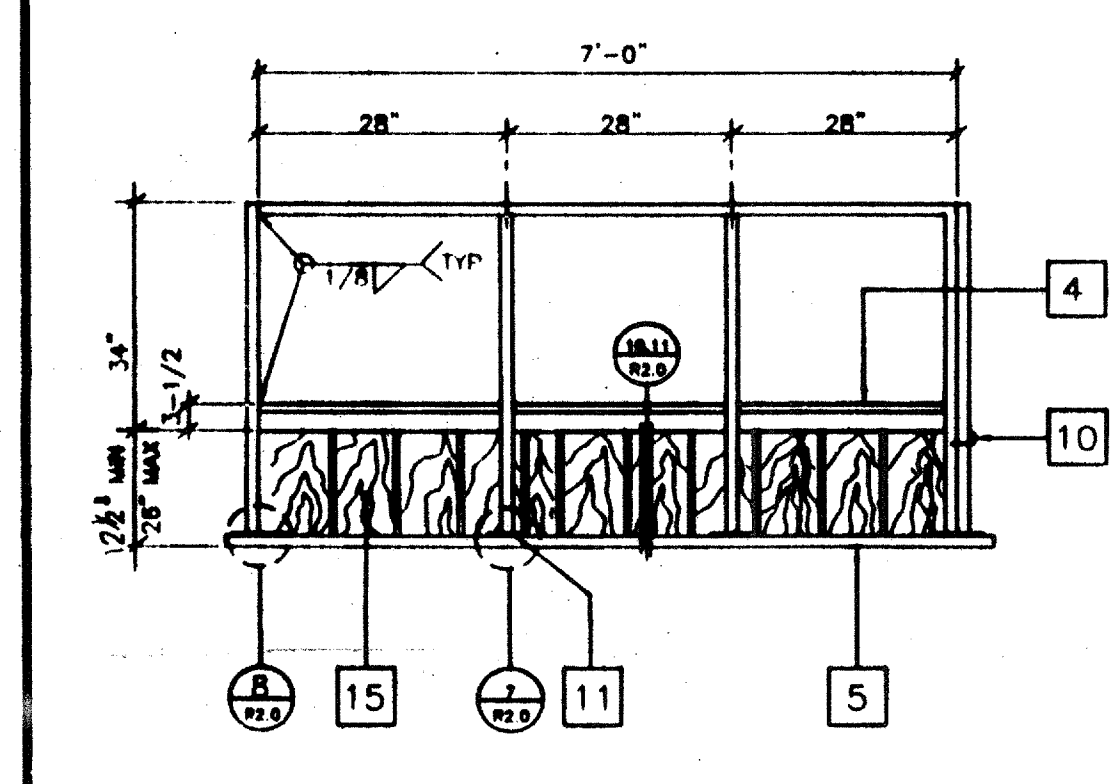
LANDING FRAME 12



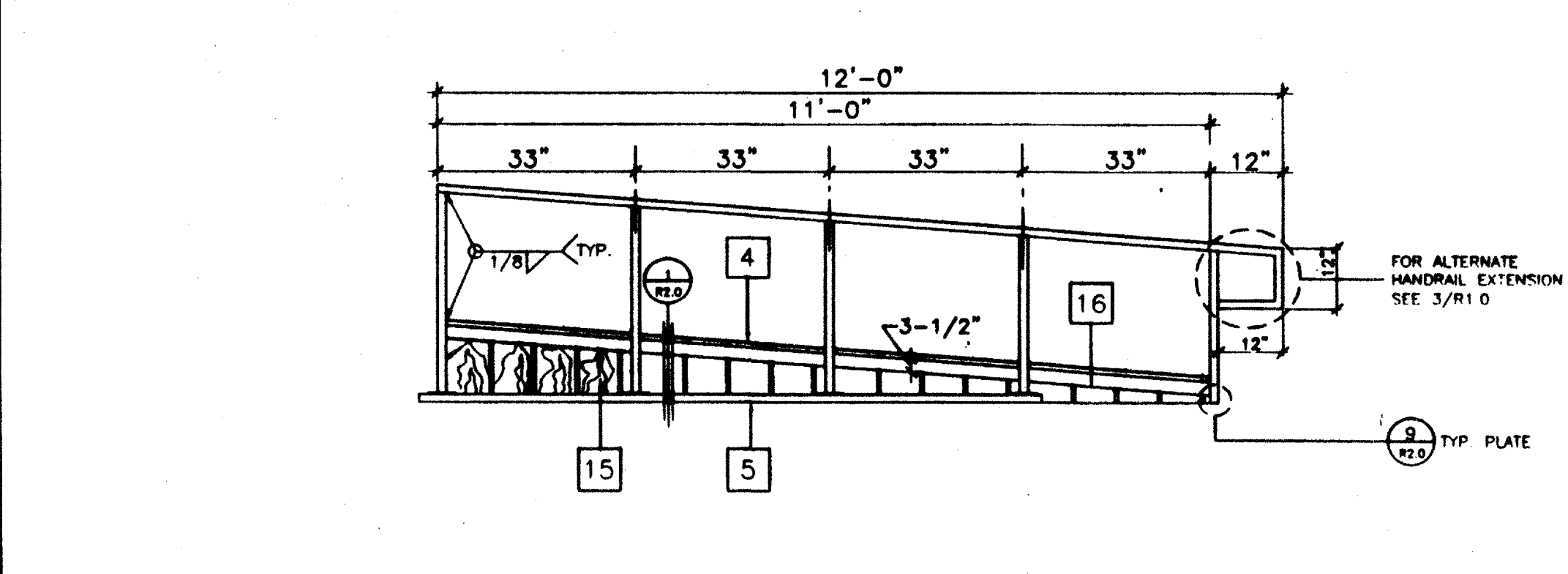
RAMP FRAME 7



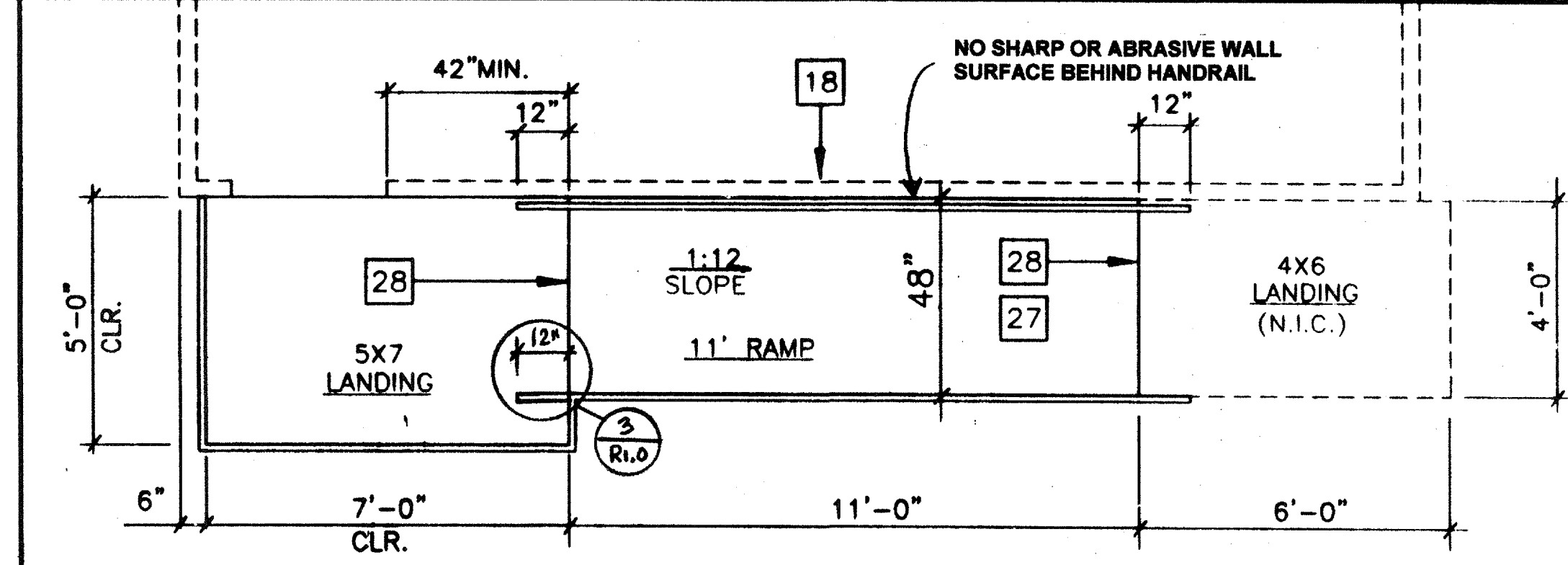
SILL PLAN FOR RAMP AND LANDING 1



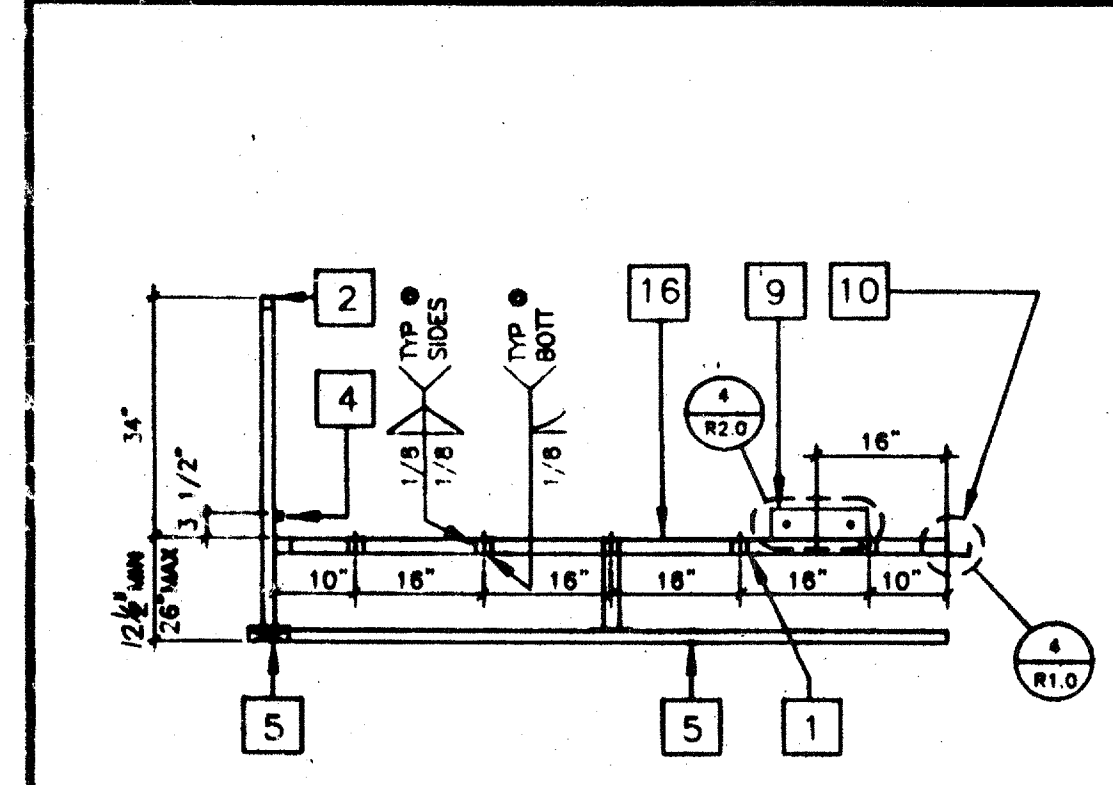
LANDING ELEVATION 13



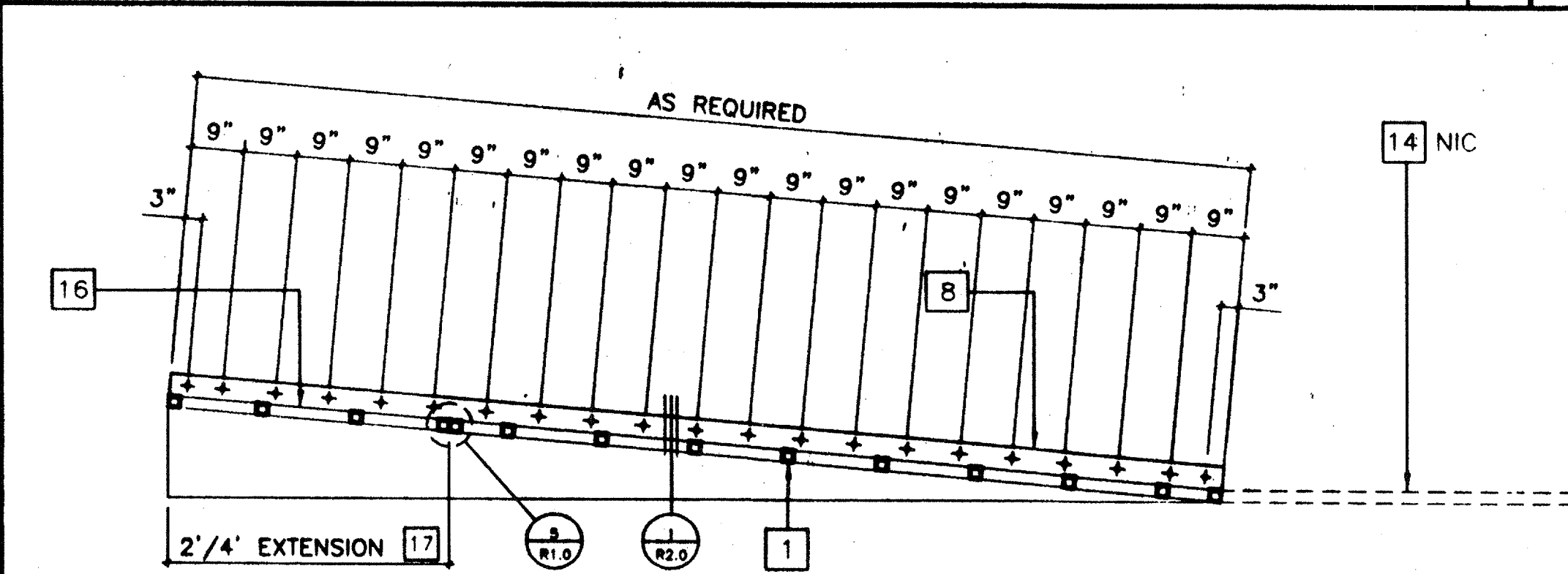
RAMP ELEVATION 8



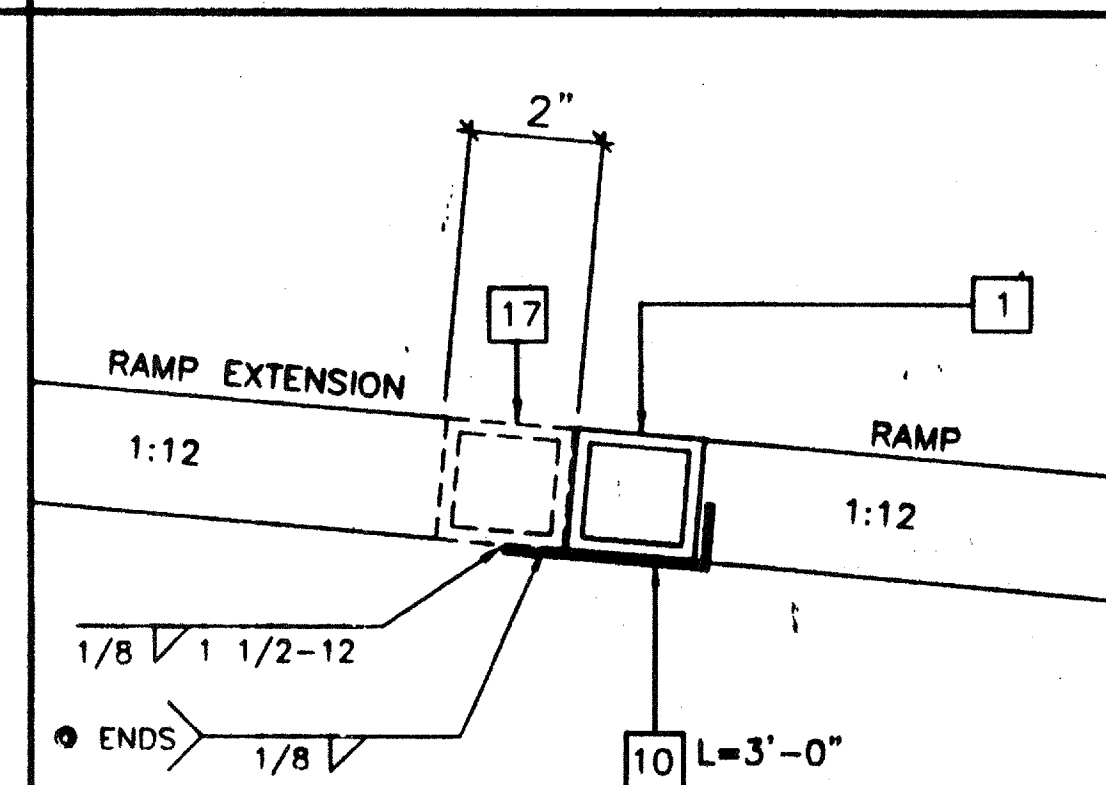
RAMP AND LANDING AT BUILDING 2



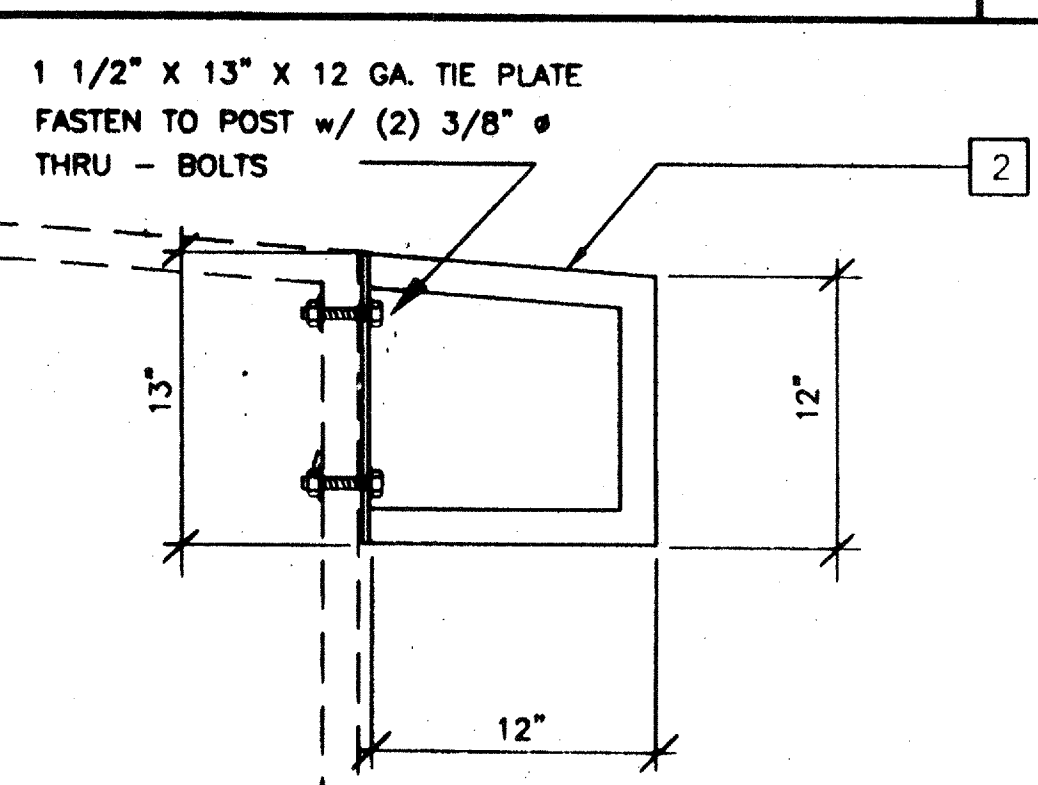
LONG. SECTION @ LANDING 14



LONGITUDINAL SECTION @ RAMP 9

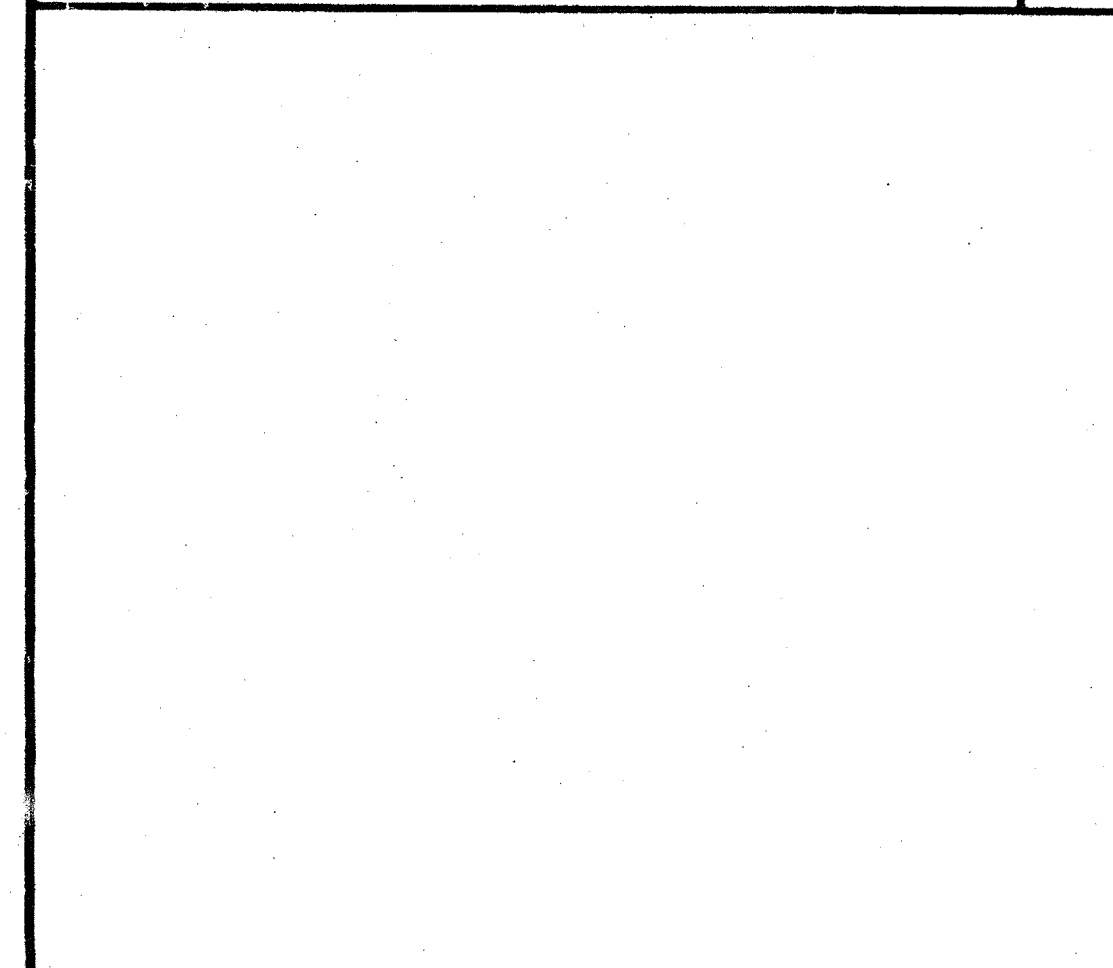


RAMP EXTENSION TO RAMP 5

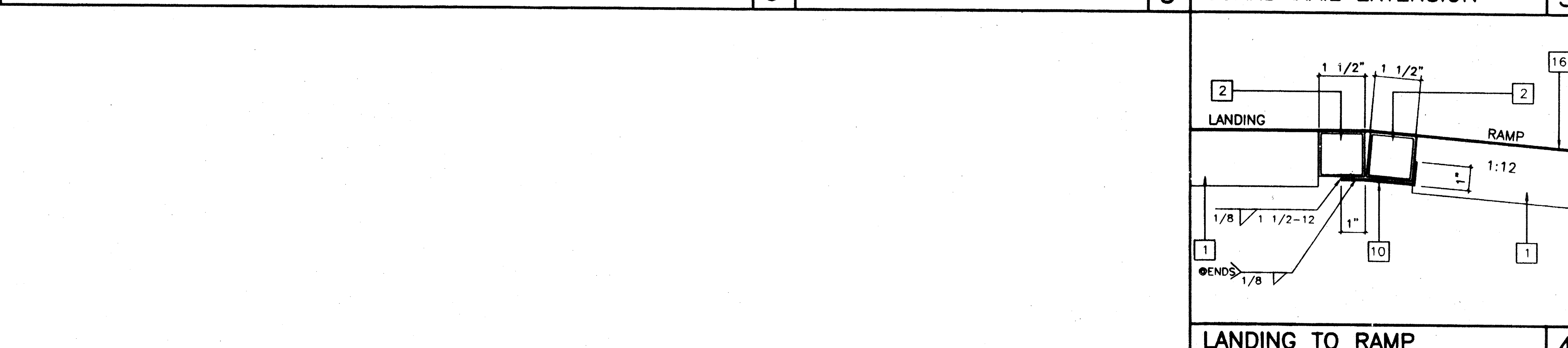


GUARD RAIL EXTENSION 3

- KEY NOTES**
- TS 2" x 2" x 14ga
 - TS 1 1/2" x 1 1/2" x 14ga (Fy = 39KSI)
 - TS 1" x 1" x 16ga WHEELCHAIR GUIDE
 - 2 x 6 PT SILL PLATE
 - 6" x 10ga CONT. PLATE W/ 1/4" X 2" TEK SCREWS @ 9" OC INTO WOOD OR FOUND. BLOCKS OR #1: x 2" TEK SCREWS INTO STEEL @ 9" OC
 - 6" x 12" x 10ga PLATE W/ 2-1/4" x 3" LAGS TO STRUCTURAL FRAME OF BUILDING
 - 3" x 1" x 3'-0" x 10ga BENT PLATE
 - 2" x 4" x 12ga BASE PLATE W/ 2-1/4" x 1" LAGS
 - 6" x 10" x 12ga BASE PLATE @ RAMP TOE
 - LINE OF RAMP/LANDING ABOVE
 - LOWER LANDING BY DISTRICT
 - SKIRTING: PLYWOOD TO MATCH BUILDING SIDING. BLOCK ALL EDGES. ATTACH W/ 8d @ 6" OC EDGES AND 12" OC FIELD. AT EDGE CONNECTION TO T.S. USE #14 x 2" TEK SCREWS @ 6" OC
 - 12ga METAL DECK: NON-SLIP SURFACE. DESIGN COEFFICIENT OF FRICTION GREATER THAN 0.6. MAINTAINABLE FOR 1 YR
 - RAMP EXTENSION FRAME.
 - EXISTING BUILDING.
 - RAMP BY MODTECH
 - FLUSH TRANSITION
 - NOTCH BOTTOM PLATE (MUD SILL) AS REQUIRED TO CLEAR RAMP TOE. MAX NOTCH 1 1/2" x 4'-0" LONG.
 - TS 1" x 1" x 16ga



LANDING TO RAMP 4



REVISIONS

| | | |
|--|--|--|
| | | |
| | | |
| | | |
| | | |
| | | |
| | | |

Electrical Engineer's Seal
 Mechanical Engineer's Seal
 Structural Engineer's Seal
 Architects Seal

IDENTIFICATION STAMP
 DIV. OF THE STATE ARCHITECT
 OFFICE OF REGULATION SERVICES
 PC 282
 AC 11/15/96
 DATE JAN 21 1997

MODTECH INC.
 2830 BARRETT AVENUE
 PERRIS, CALIF. 92572
 PH (909) 943-4014
 FAX (909) 940-0427

Job Number: PC 282
 © MODTECH INC. 1997
 4012-085 **STKP-40**

drawn by FWH
 date 11/96
 checked by
 date
 Modtech project no.
 MODTECH Index No.

RAMP / LANDING
R1.0