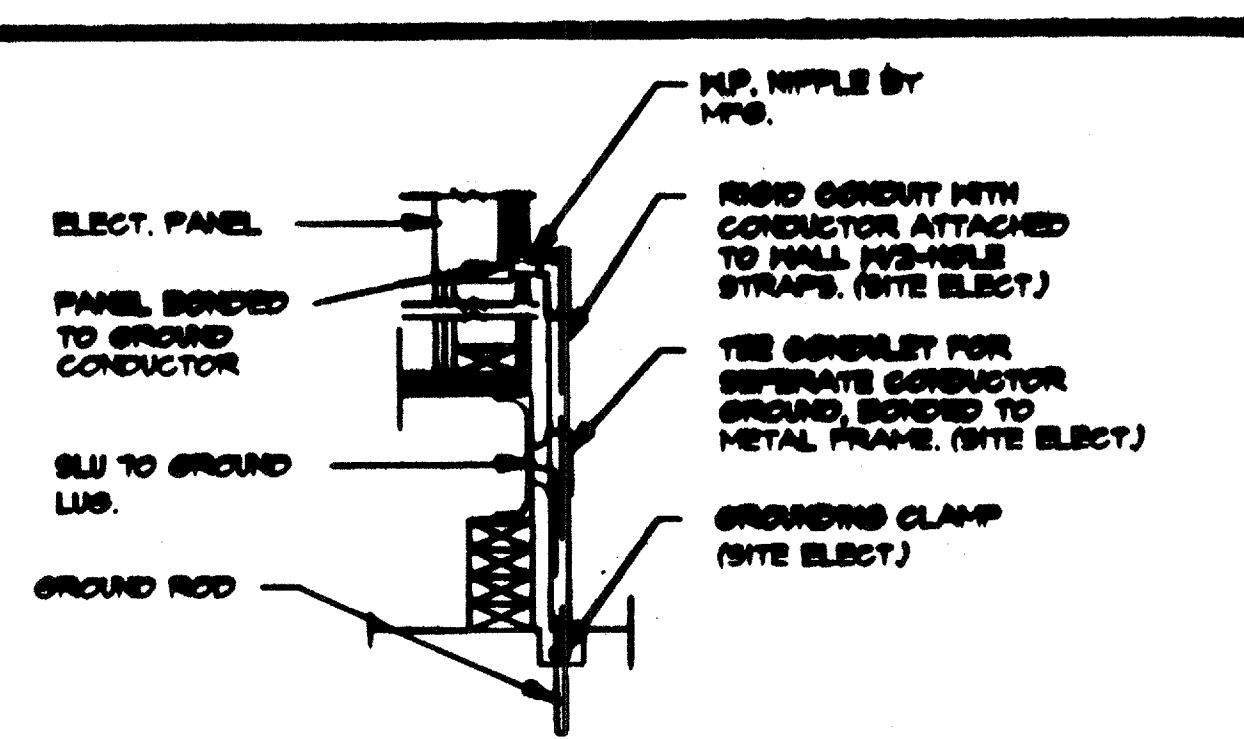
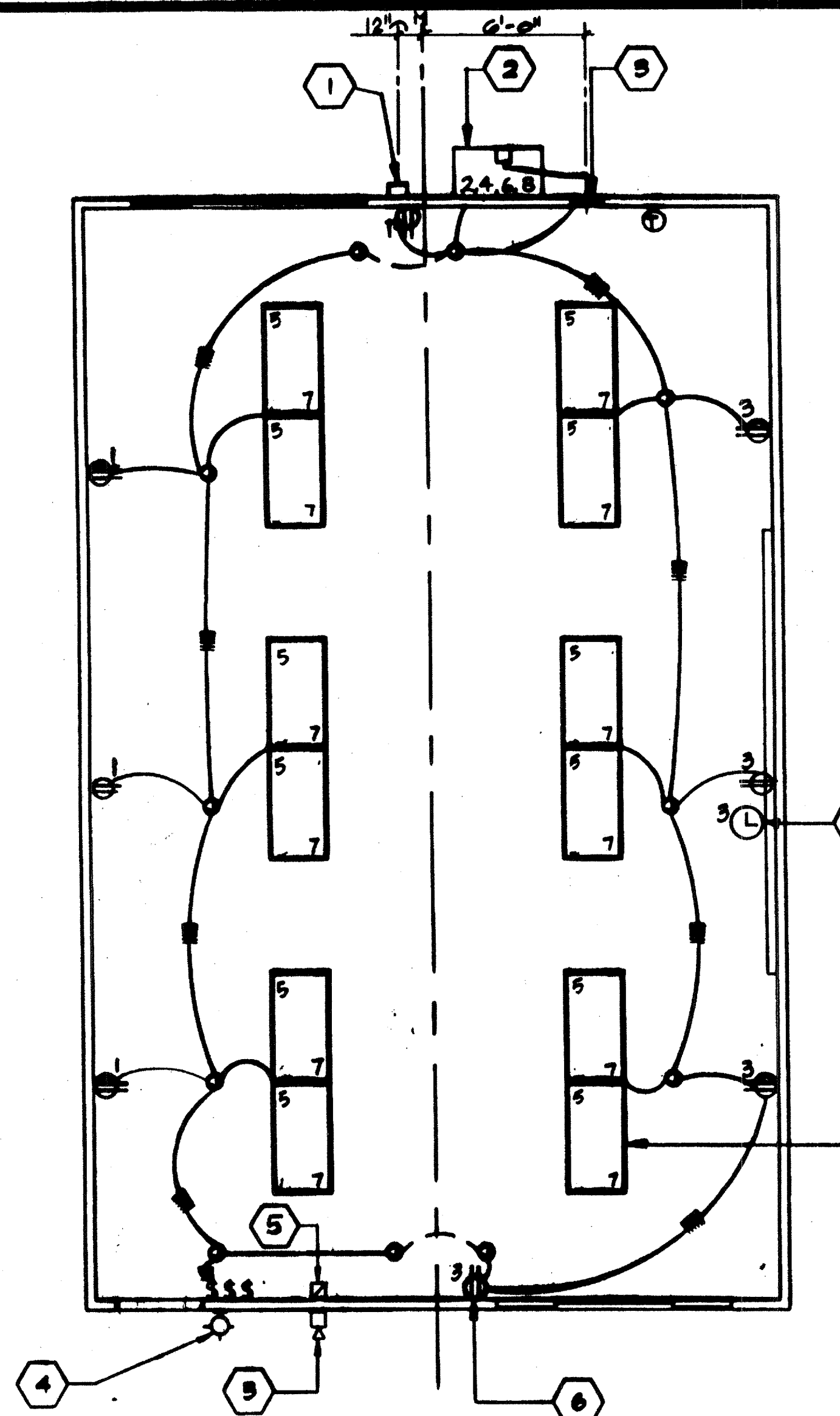


JUMPER to MOD. LINE



TYPICAL GROUNDING DETAIL

- EACH BUILDING SHALL BE SEPARATELY GROUNDED WITH A 3/4" ROD OR COPPER CLAD STEEL GROUND ROD. WHERE ROCK BOTTOM IS ENCOUNTERED, ROD SHALL BE DRIVEN AT AN ANGLE NOT TO EXCEED 45 DEGREES FROM THE VERTICAL, OR SHALL BE BURIED IN A TRENCH THAT IS AT LEAST 30" DEEP. (BY SITE ELECTRICAL)
- TESTING TEST FOR RESISTANCE TO GROUND. IF RESISTANCE EXCEEDS 25 OHMS, INITIAL ADDITIONAL GROUND RODS SEPARATED AT LEAST 6'-0" UNTIL RESISTANCE IS REDUCED TO 25 OHMS OR LESS. (BY SITE ELECTRICAL)
- PROVIDE EQUIPMENT ANCHORAGE PER TITLE 24, TABLE 16-4 PART B.
- APPROVAL OF THIS PLAN DOES NOT CONSTITUTE APPROVAL OF THE FIRE ALARM FOR ALL SITES. THE FIRE ALARM SYSTEM ANCHOR COMPONENTS MUST BE REVIEWED TO BE CHANGED DUE TO SITE LOCATION, EXISTING CONDITIONS OR INCOMPATIBLE COMPONENTS.
- GROUNDING TEST SHALL BE DONE IN THE PRESENCE OF THE PROJECT INSPECTOR. GROUNDING SHALL BE IN ACCORDANCE W/C.E.C. ARTICLE 250



FRONT

LOAD	PANEL A				FEED BOTTOM				LOAD
	WATTS	BREAKER	W	8	BREAKER	WATTS	LOAD		
RECEPTS	720	20	11	1	20	2380	HVAC-3/4 TON		
RECEPTS / CLOCK	900	20	13	4	330	3300	HVAC-3/4 TON		
INTERIOR LIGHTS	360	20	15	4	30	2500	HEAT STRIP		
INTERIOR / EXTERIOR LIGHT	1000	20	17	8	30	2500	HEAT STRIP		
FIRE ALARM	40		1	10					
			11	12					
			13	14					
			15	16					
			17	18					
			19	20					
WATTS/PHASE	A = 2380	1720	1960		3300	3300	B = 1820	WATTS/PHASE	
TOTAL =	15,905	WATTS	67	AMP'S	180VAC	VOLTS	1	3	WIRE

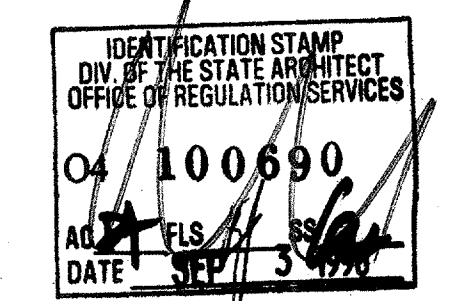
NCL = 13380 W.

ELECTRICAL PLAN

SCALE 1/4"=1'-0"

- ### KEY NOTES
- (6x6x4) WEATHER PROOF GUTTER BOX +18" A.F.F.
 - HVAC UNIT (SEE SHT. M 1.0)
 - ELECTRICAL PANEL "A" TYPE-B10 12/20
 - EXTERIOR LIGHT FIXTURE
 - 4x JUNCTION BOX FOR FIRE ALARM
 - DUPLEX WALL RECEPTACLE 15-A 125-V 3-WIRE
 - CLOCK OUTLET (SEE SPECS)
 - 2'X4' FLUORESCENT LIGHT AND FIXTURE 4-TUBE (SEE SPECS)

- ### LEGEND
- 2' x 4' FLUORESCENT LIGHT FIXTURE WITH 4-TUBE (SEE SPECS)
 - EXTERIOR LIGHT FIXTURE +90" A.F.F.
 - S SWITCH +48" A.F.F.
 - ELECTRICAL PANEL +60" A.F.F. 1/4" POWER NIPPLE JUMPER BY SITE ELECTRICIAN
 - ⊕ DUPLEX WALL RECEPTACLE 15-A 125-V 3-WIRE +18" A.F.F. UN.G.
 - ⊙ THERMOSTAT +48" A.F.F.
 - 4"x4" BOX FOR EXT. FA. HORN +96" A.F.F. 3/4" C/O □ FULLSTRING
 - 4"x4" BOX FOR INT. FA. PULL STATION +48" A.F.F. 3/4" C/O TO CE. (PULL STRING)
 - ⊙ 4"x4" BOX FOR INT. FA. STROBE 1/2"x3/4" C/O TO CE. FULLSTRING + 80" A.F.F.
 - 4/SDP EXTERIOR WEATHERPROOF GUTTER BOX +18" A.F.F. 3/4" C/O TO RECVIVE FA. C/O
 - ⊙ CLOCK OUTLET +96" A.F.F.



4012-085 STKP-40

REVISIONS	ELECTRICAL	MECHANICAL	STRUCTURAL	ARCHITECT	DIVISION OF THE STATE ARCHITECT	MODTECH INC.	JOB NO.	DATE	CHECKED BY	DATE	DRAWN BY
						2830 BARRETT AVE. PERRIS, CA. 92572 PH. (909) 943-4014 FX. (909) 940-0427					

INC. 3060 2928

ELECTRICAL PLAN E.I.O