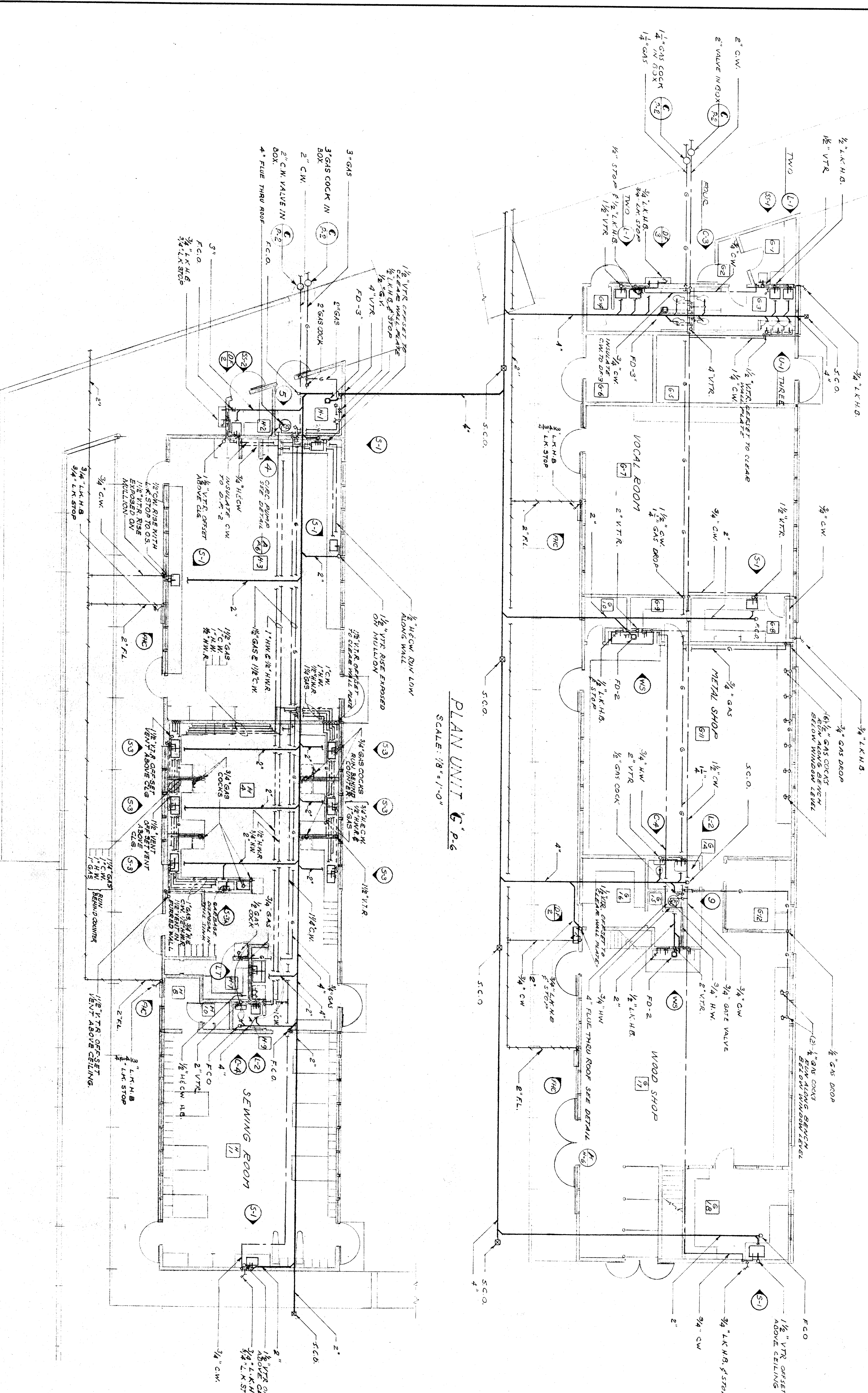


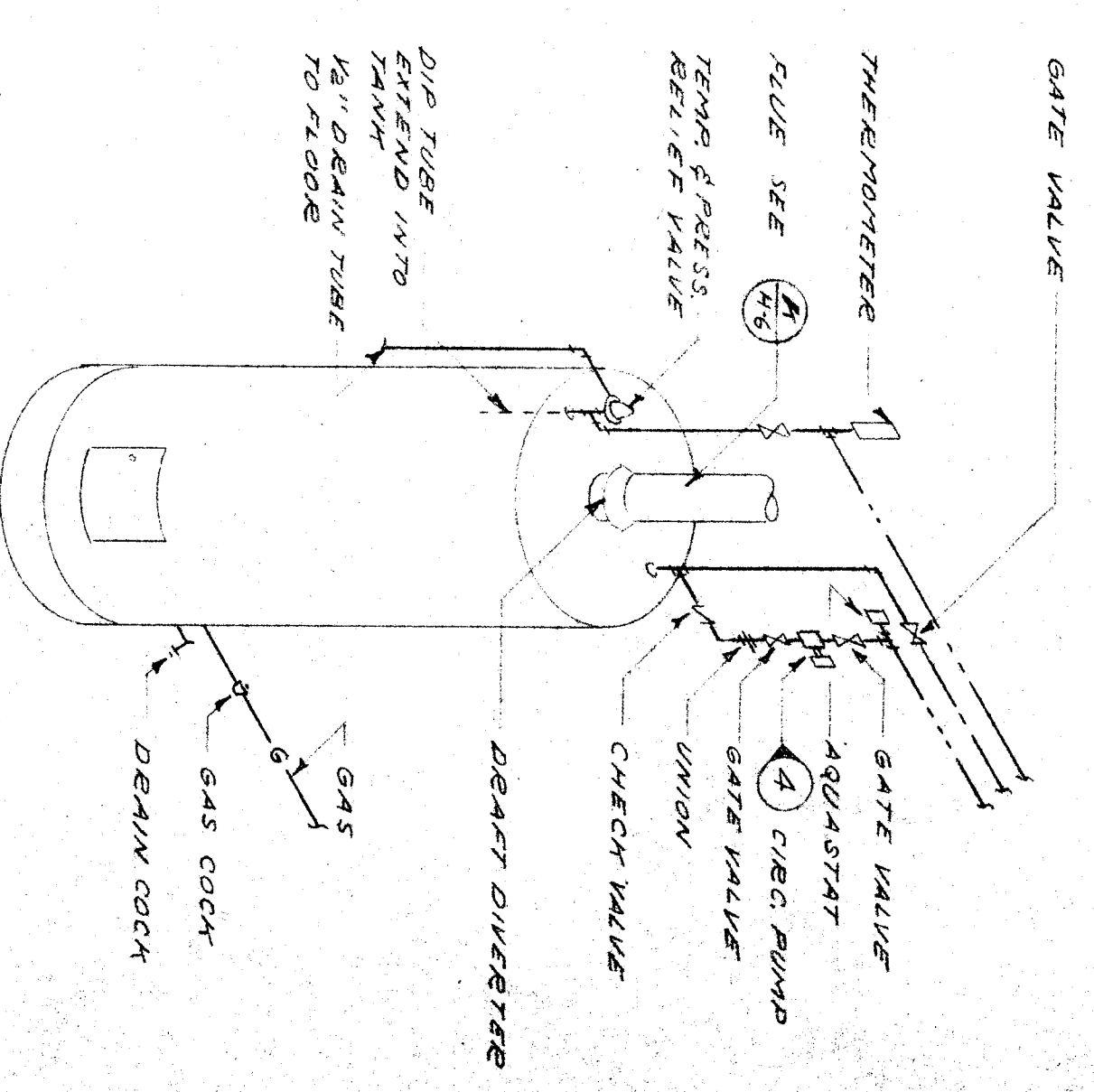
PLUMBING EQUIPMENT SCHEDULE

No.	LOCATION	ITEM	DATA	QTY	NO.
1	UNIT - F	STORAGE BOOSTER HEATER	80 GAL. STORAGE 100 PSI. 1/2" NPT. 1/2" NPT. 1/2" NPT.	1	100
2	UNIT - F	BOOSTER HEATER	45 GAL. STORAGE 100 PSI. 1/2" NPT. 1/2" NPT.	1	100
3	UNIT - F	STORAGE TANK	150 GAL. CAPACITY 48" DIA. 48" H. 1/2" NPT.	1	100
4	UNIT - F	CIRCULATING PUMP	3/4" DIA. 1/2" NPT.	1	100
5	UNIT - N	STORAGE BOOSTER HEATER	55 GAL. STORAGE 100 PSI. 1/2" NPT. 1/2" NPT.	1	100
6	UNIT - C	STORAGE TYP HEATER	20 GAL. STORAGE 100 PSI. 1/2" NPT. 1/2" NPT.	1	100
7	UNIT - B	STORAGE TYP HEATER	40 GAL. STORAGE 100 PSI. 1/2" NPT. 1/2" NPT.	1	100
8	UNIT - E	STORAGE TYP HEATER	30 GAL. STORAGE 100 PSI. 1/2" NPT. 1/2" NPT.	1	100
9	UNIT - G	STORAGE TYP HEATER	20 GAL. STORAGE 100 PSI. 1/2" NPT. 1/2" NPT.	1	100
10	UNIT - E	ASBESTOS CEMENT PIPE	1/2" DIA. 10' LENGTH	1	100

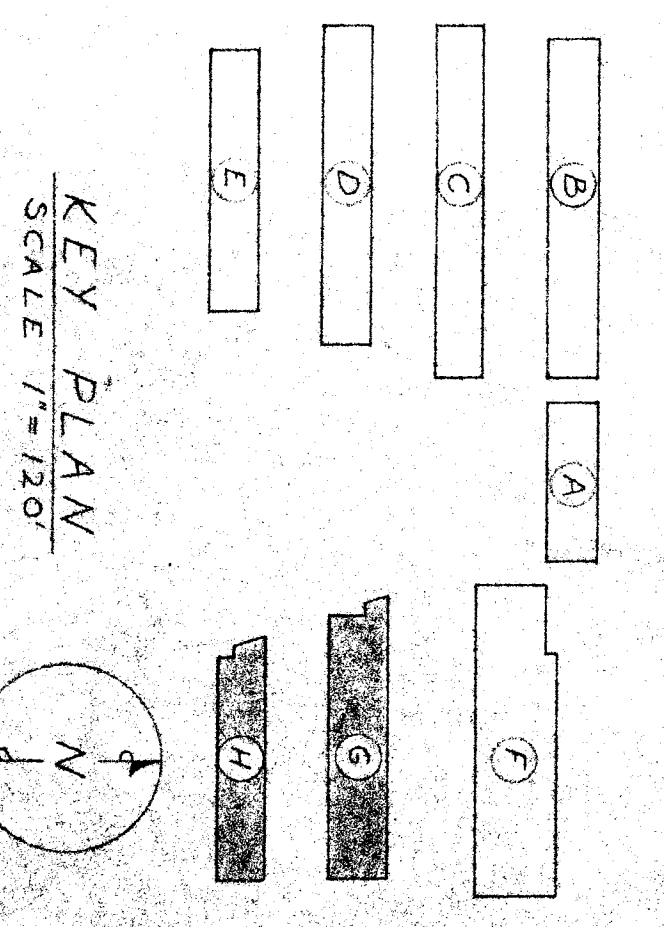


PLAN UNIT H-26
SCALE: 1/8" = 1'-0"

PLAN UNIT H-26
SCALE: 1/8" = 1'-0"



DETAIL A
SCALE: NO SCALE



KEY PLAN
SCALE: 1/4" = 1'-0"

DATE: 8/15/57
DRAWN BY: J. E. HAVEL
CHECKED BY: J. E. HAVEL

OFFICE OF SUPERINTENDENT OF SCHOOLS
DEPARTMENT OF PUBLIC WORKS
DIVISION OF ARCHITECTURE

STATE OF CALIFORNIA
DEPARTMENT OF PUBLIC WORKS
DIVISION OF ARCHITECTURE

CHUCK AND VERNIE ALL DIMENSIONS AND CONDITIONS AT JOB SITE BEFORE PROCEEDING WITH THE WORK. REPORT ANY DISCREPANCIES TO THE ARCHITECT.

BAKERSFIELD CITY SCHOOLS
1600 "K" STREET
BAKERSFIELD CALIFORNIA
BOARD OF TRUSTEES

WASHINGTON JR. HIGH SCHOOL
BAKERSFIELD CITY SCHOOL DISTRICT
CALIFORNIA

APPROVED: [Signature]
DATE: [Blank]

ERNEST L. MCCOY A-I-K ARCHITECT
3811 H STREET
BAKERSFIELD CALIFORNIA

JOB NO. [Blank]

DATE: 8/15/57

SCALE: 1/8" = 1'-0"

PLUMBING