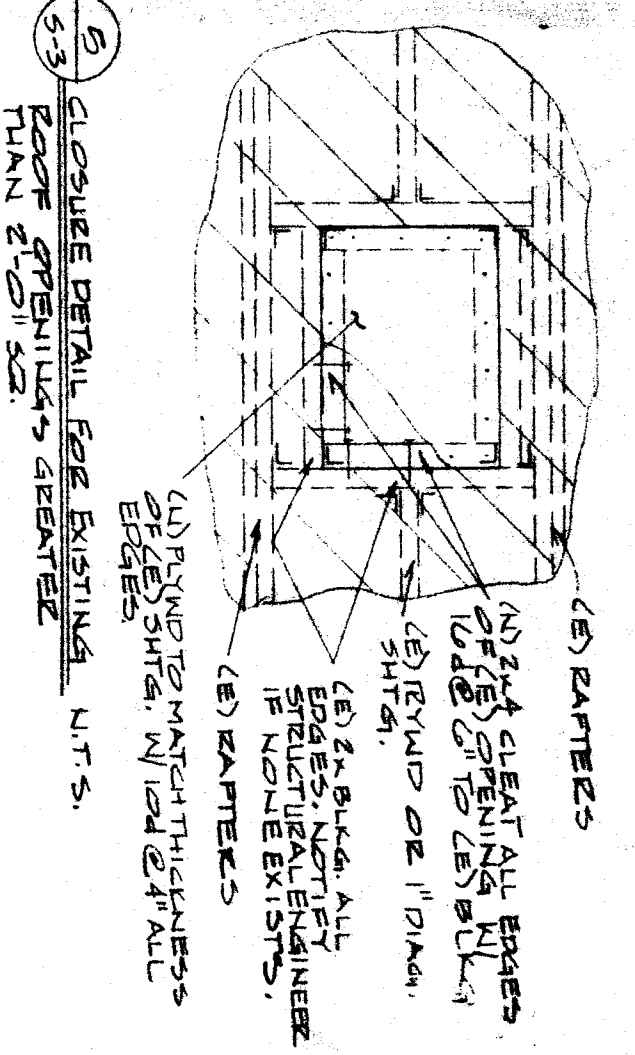
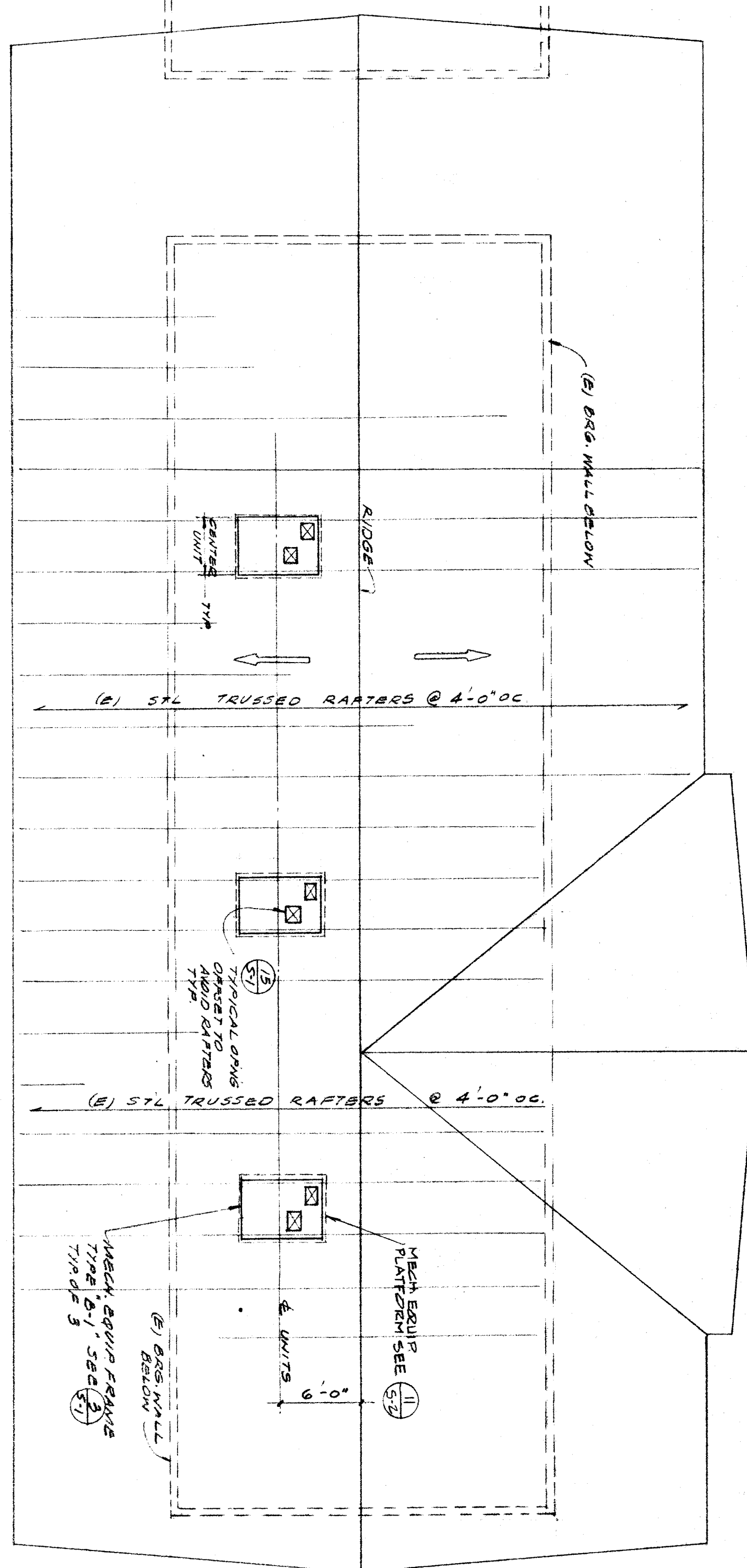


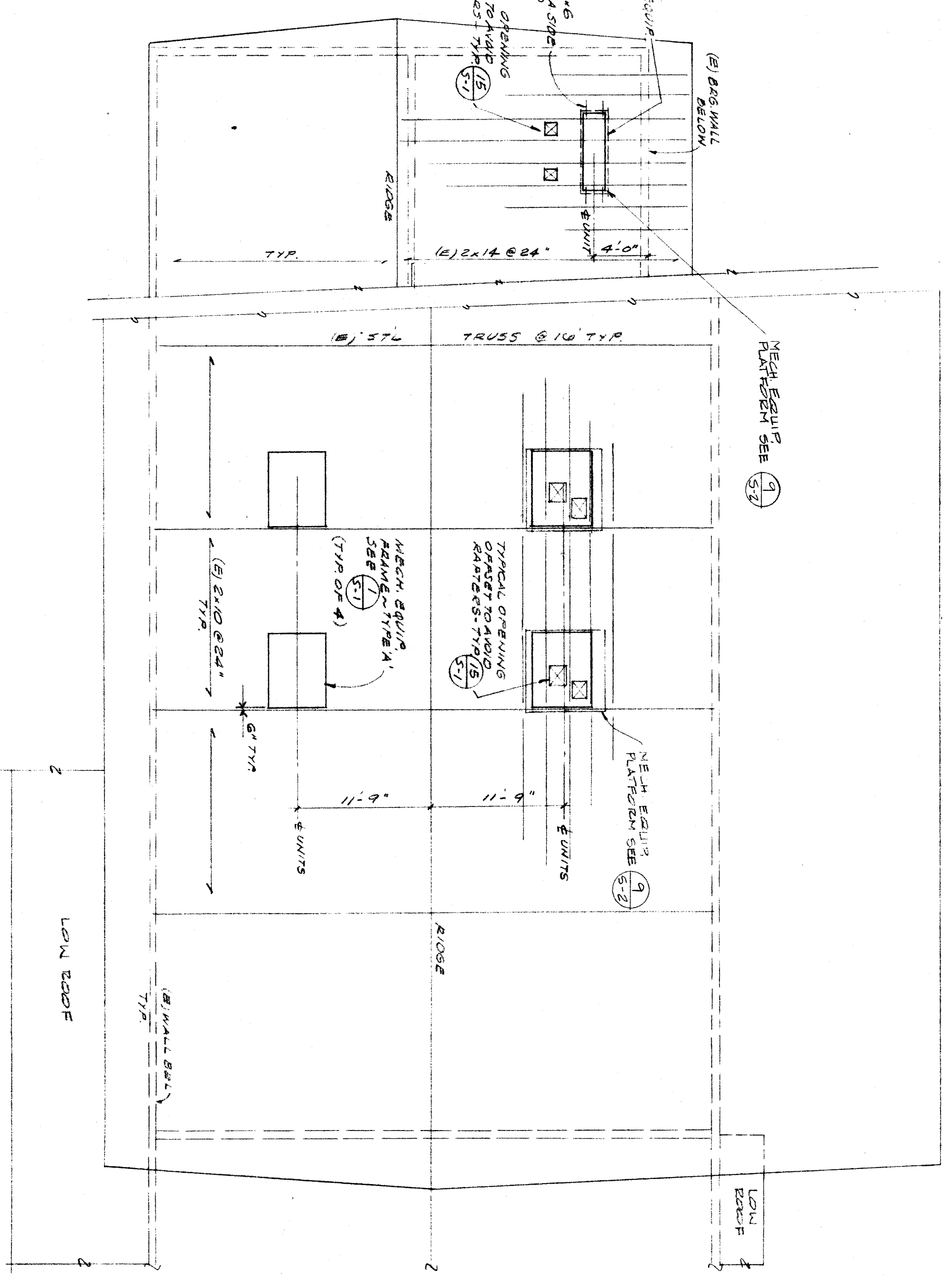
1 MECH EQUIPMENT SUPPORT FRAME TYPE C SECTION



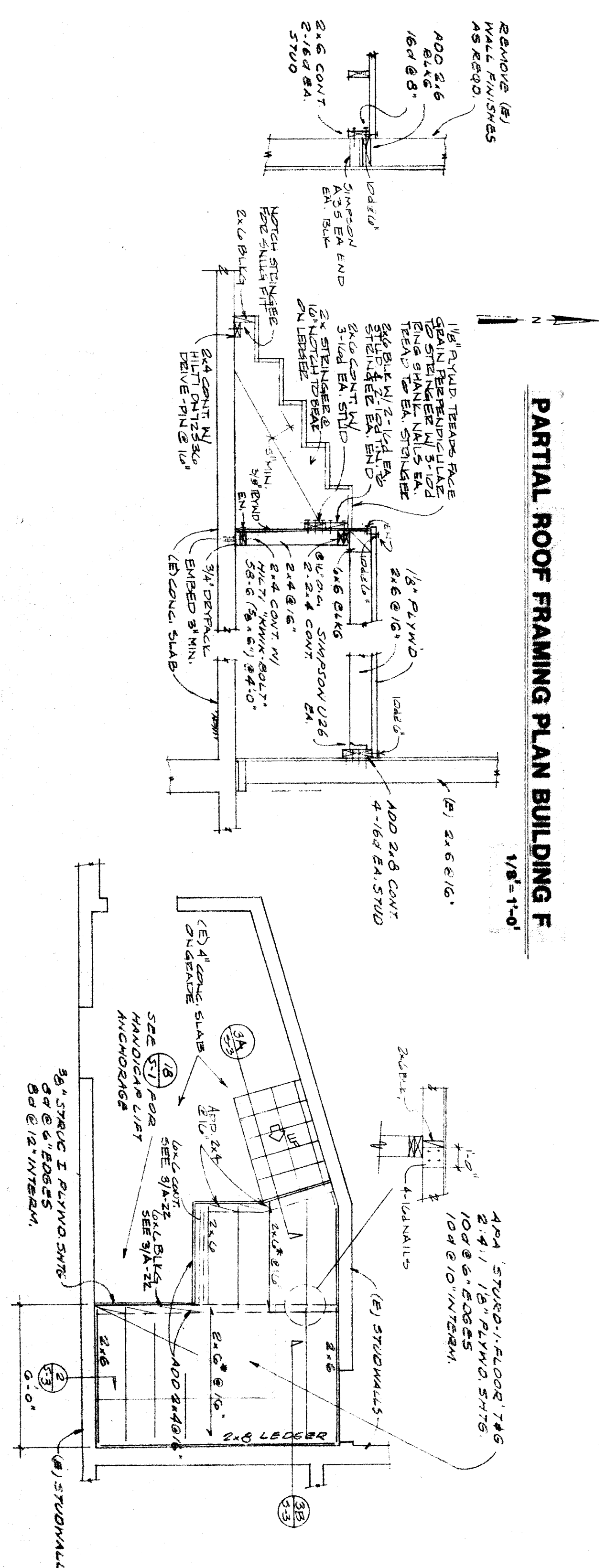
FRAMING PLAN NOTE



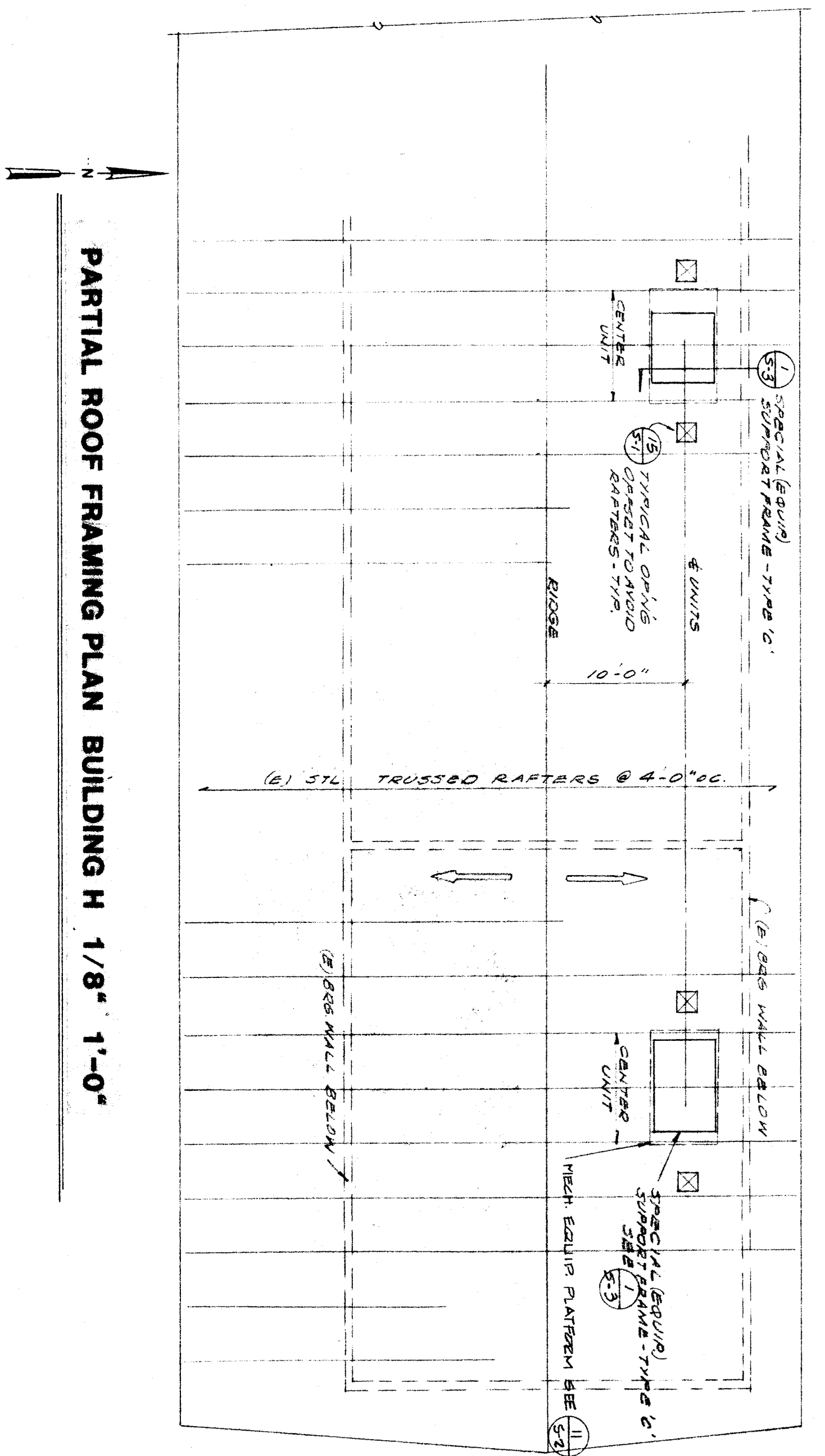
PARTIAL ROOF FRAMING PLAN BUILDING A 1/8\"/>



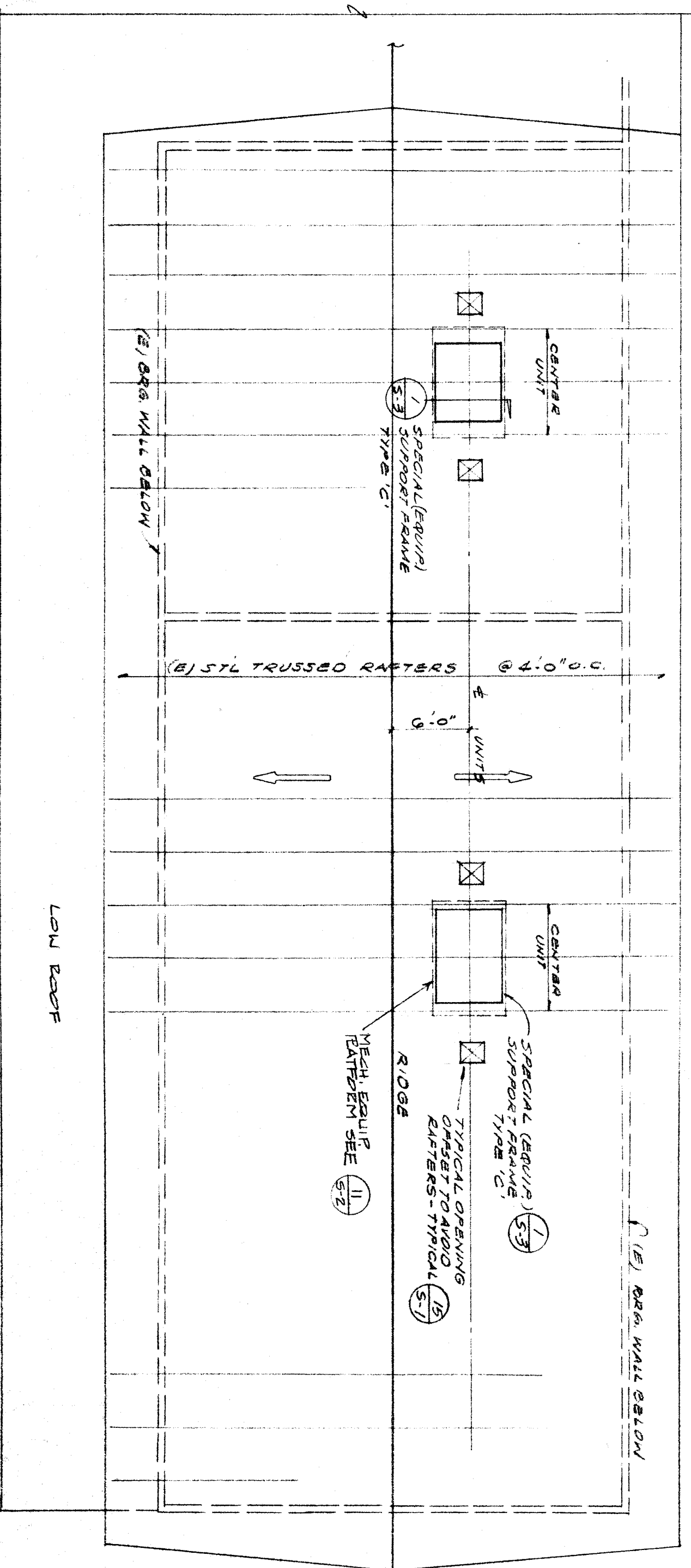
PARTIAL ROOF FRAMING PLAN BUILDING F 1/8\"/>



PARTIAL ROOF FRAMING PLAN BUILDING G 1/8\"/>



PARTIAL ROOF FRAMING PLAN BUILDING H 1/8\"/>



PARTIAL ROOF FRAMING PLAN BUILDING I 1/8\"/>

2

3

4

5

6

7

IDENTIFICATION TAG  
 13839  
 BAKERSFIELD CITY SCHOOL DISTRICT  
 1/8\"/>

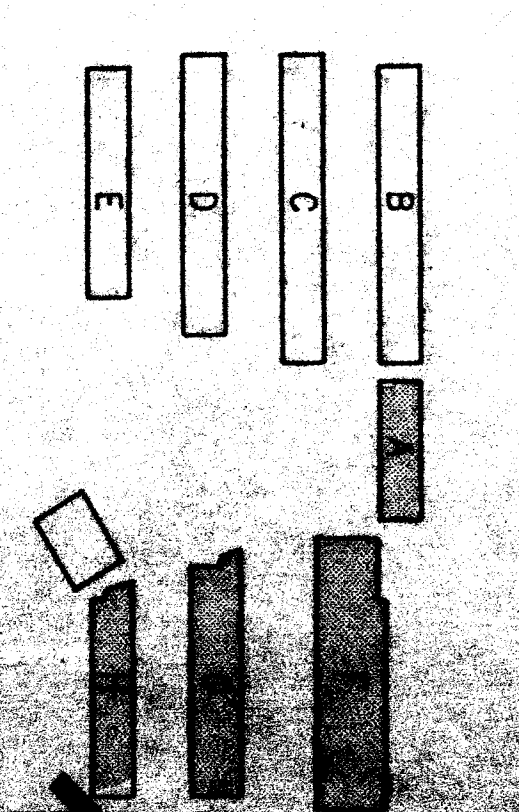
APPROVED ARCHITECT  
 CHECKED  
 DRAWN BY  
 SHEET NUMBER  
 13839  
 DATE  
 PROJECT NO.

PARTIAL ROOF FRAMING PLANS AND DETAILS

DATE	APPROVED	REVISIONS
8-10-88		ISSUED FOR BIDDING
9-2-91		REVISIONS

BAKERSFIELD CITY SCHOOL DISTRICT BOARD OF EDUCATION

DATE APPROVED  
 DATE ISSUED FOR BIDDING  
 DATE OF REVISIONS



KEY PLAN

WASHINGTON JUNIOR HIGH SCHOOL MODERNIZATION

BAKERSFIELD CITY SCHOOL DISTRICT

RENFRO RUSSELL & ASSOCIATES  
 ARCHITECTS • ENGINEERS • INTERIOR DESIGNERS  
 4800 Buckwalter Avenue, Suite 300, Bakersfield, California 93309 (805) 377-9100  
 CONSULTANTS  
 ED CRESWELL STRUCTURAL ENGINEER  
 1718 OAKSTREET, STE. 211 BAKERSFIELD, CALIFORNIA 93304 (805) 338-2000  
 PROJECT  
 BAKERSFIELD CITY SCHOOL DISTRICT BOARD OF EDUCATION