

EXHAUST FAN SCHEDULE

MARK	MFR. # MODEL	HP	VOLT	PHASE	CFM	S.P.	MAX RPM	DRIVE	REMARKS	WT.
EA	GREENHECK 6818-5	1/2	115	1	3200	1/4"	900	B	2 SPEED MOTOR, BRONZE GREENHECK	100#
EB	GREENHECK 68-10	1/4	115	1	700	1/4"	1040	B	2 SPEED MOTOR, BRONZE GREEN	50#
EC	GREENHECK 6818-4	1/4	115	1	2470	1/4"	730	B	2 SPEED MOTOR, BRONZE GREEN	100#
ED	GREENHECK 68-8	1/2	115	1	90	1/8"	1550	D	7/8" SIZE DISCHARGE CAP FULL SIZE DISCHARGE CAP	12#
EE	GREENHECK 68-17	1/2	115	1	155	1/8"	1550	D	FULL SIZE DISCHARGE CAP MOBILE RUSH ROOM CAP.	18#
EF	GREENHECK 68-19	1/2	115	1	495	1/4"	1500	D	BRONZE GREEN	23#

EXHAUST FAN NOTES:
 1. INTERLOCK ALL FANS WITH EMS.
 2. PROVIDE BACKDRAFT DAMPER IN ALL EXHAUST DUCTS.

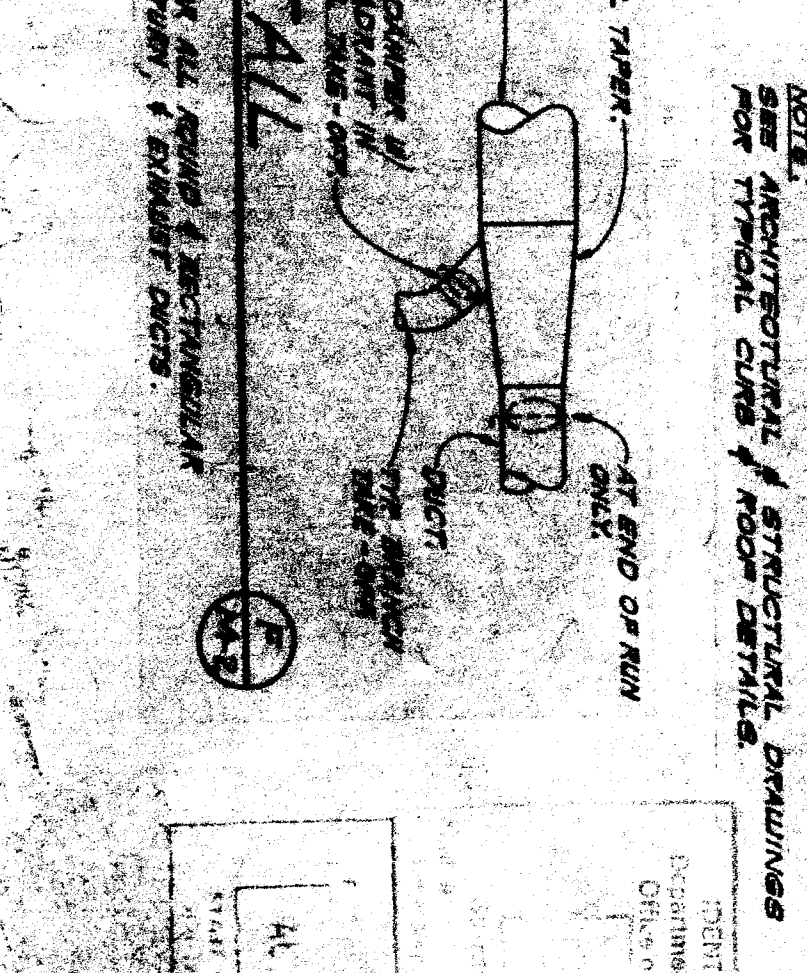
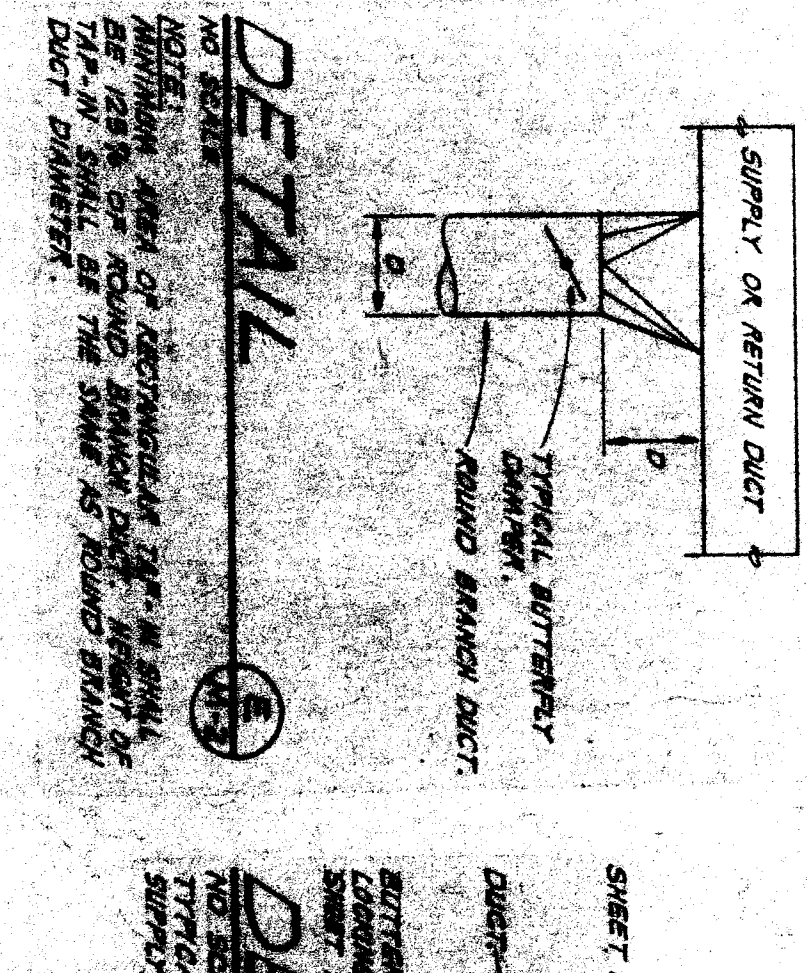
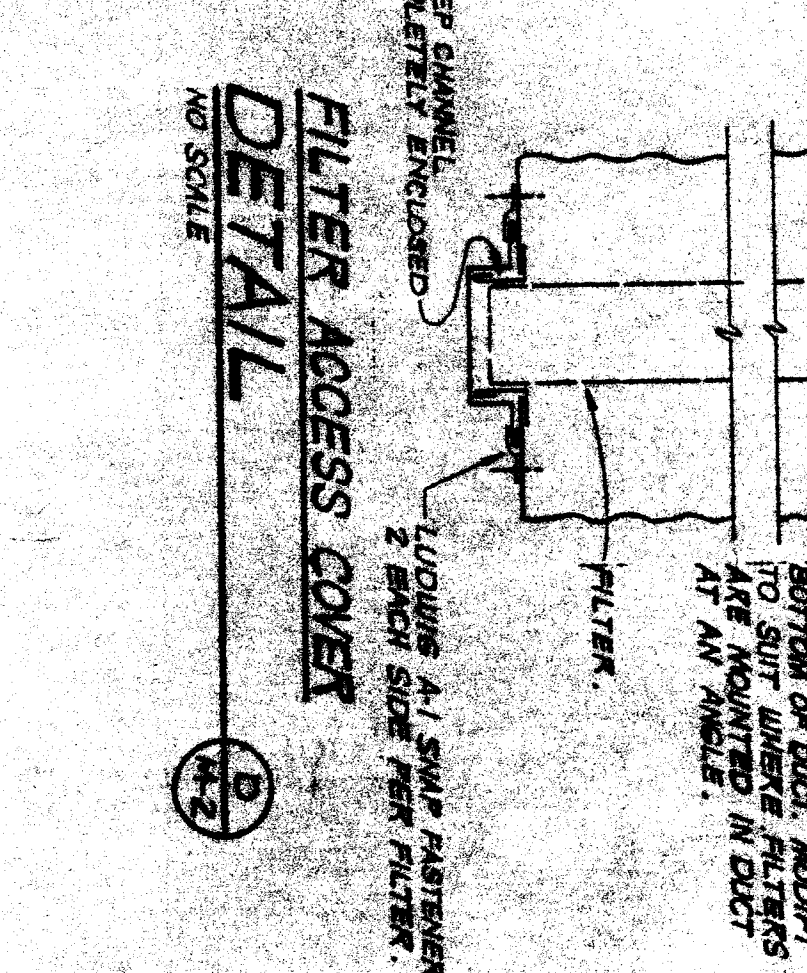
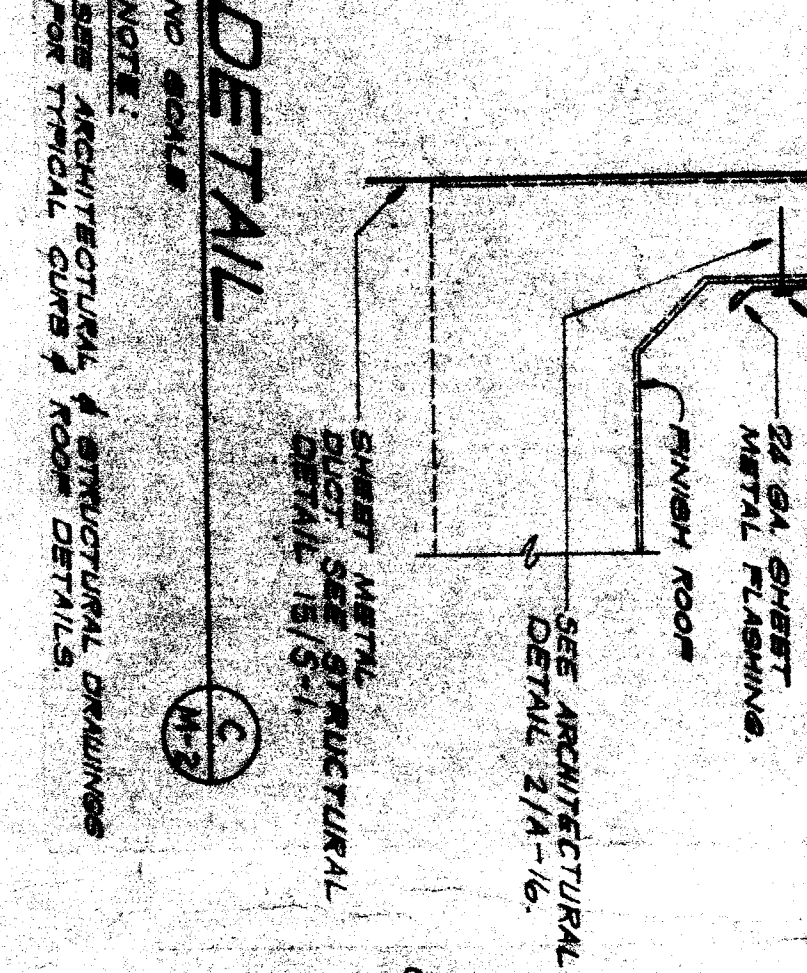
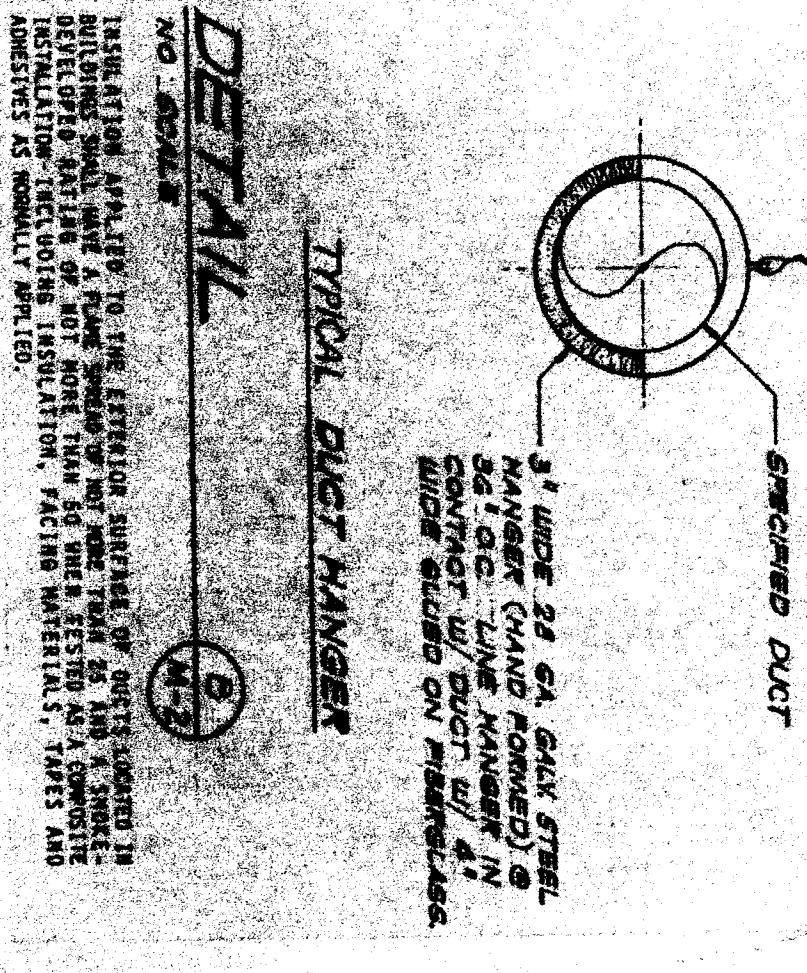
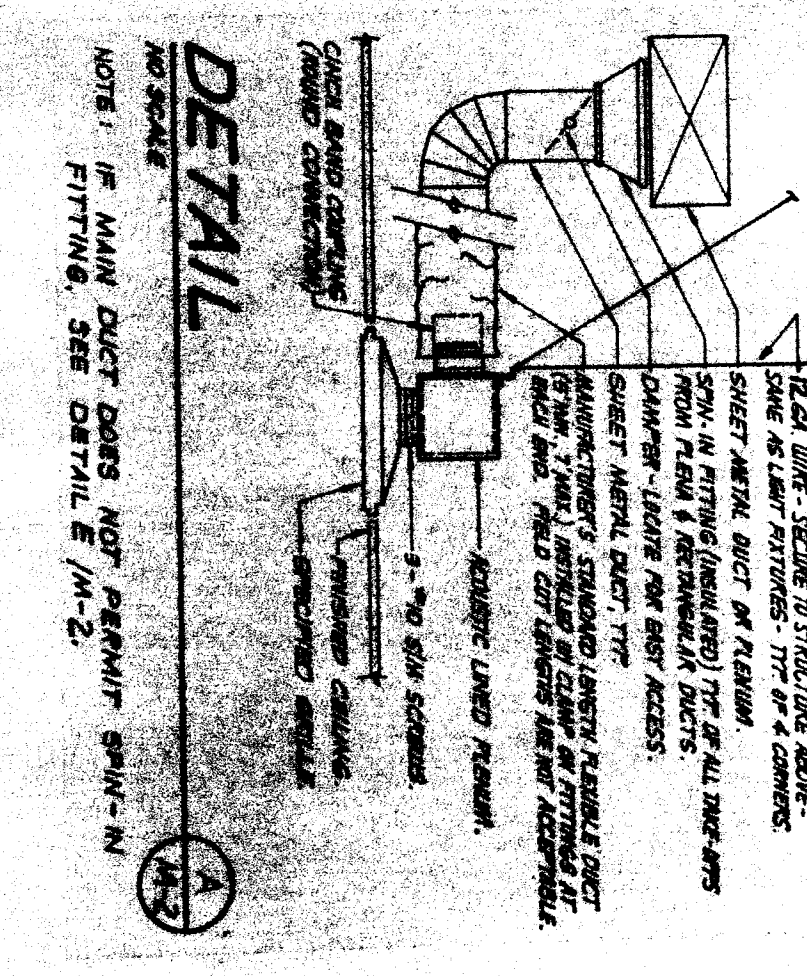
GRILLE SCHEDULE

MARK	DUTY	DESCRIPTION
A	CEILING SUPPLY	BARB-AIR 575V LOUVER FACE SURFACE MOUNT DIFFUSER, BLACK INTERIOR OGD, #7 FINISH.
B	CEILING SUPPLY	BARB-AIR 575V PERFORATED FACE LAV-IN DIFFUSER, BLACK INTERIOR OGD, #7 FINISH.
C	CEILING SUPPLY	BARB-AIR 575V PERFORATED FACE SURFACE MOUNT DIFFUSER, BLACK INTERIOR OGD, #7 FINISH.
D	CEILING RETURN OR EXHAUST	BARB-AIR TADY ALUMINUM EGGRATE SURFACE MOUNT RETURN, BLACK INTERIOR OGD, COUNTERSUNK SCREW HOLES, #7 FINISH.
E	CEILING RETURN OR EXHAUST	BARB-AIR TADY ALUMINUM EGGRATE LAV-IN RETURN, BLACK INTERIOR OGD, #7 FINISH.
F	WALL EXHAUST	BARB-AIR 575V SURFACE MOUNT RETURN WITH REMOVABLE CORE AND #7 FINISH, FURNISH WITHOUT INCIDENTS.
G	WALL EXHAUST	WONDER-METAL MODEL L-448 1/2" GALV. STEEL 1/2" MESH WINDSCREEN, PROVIDE BAVED ENAMEL FINISH, COLOR TO MATCH BUILDING EXTERIOR. SUBMIT MANUFACTURER'S COLOR CHART.
H	EXHAUST AIR LOUVER	WONDER-METAL MODEL L-245 1/2" GALV. STEEL LOUVER WITH EXTERIOR MOUNTING FLANGE AND 1/2" MESH WINDSCREEN, PROVIDE BAVED ENAMEL FINISH, COLOR TO MATCH BUILDING EXTERIOR. SUBMIT MANUFACTURER'S COLOR CHART.
J	CEILING SUPPLY	BARB-AIR 575V LOWER FACE LAV-IN DIFFUSER, BLACK INTERIOR OGD, #7 FINISH, 24" X 24" NOMINAL FACE.

AIR CONDITIONING EQUIPMENT SCHEDULE

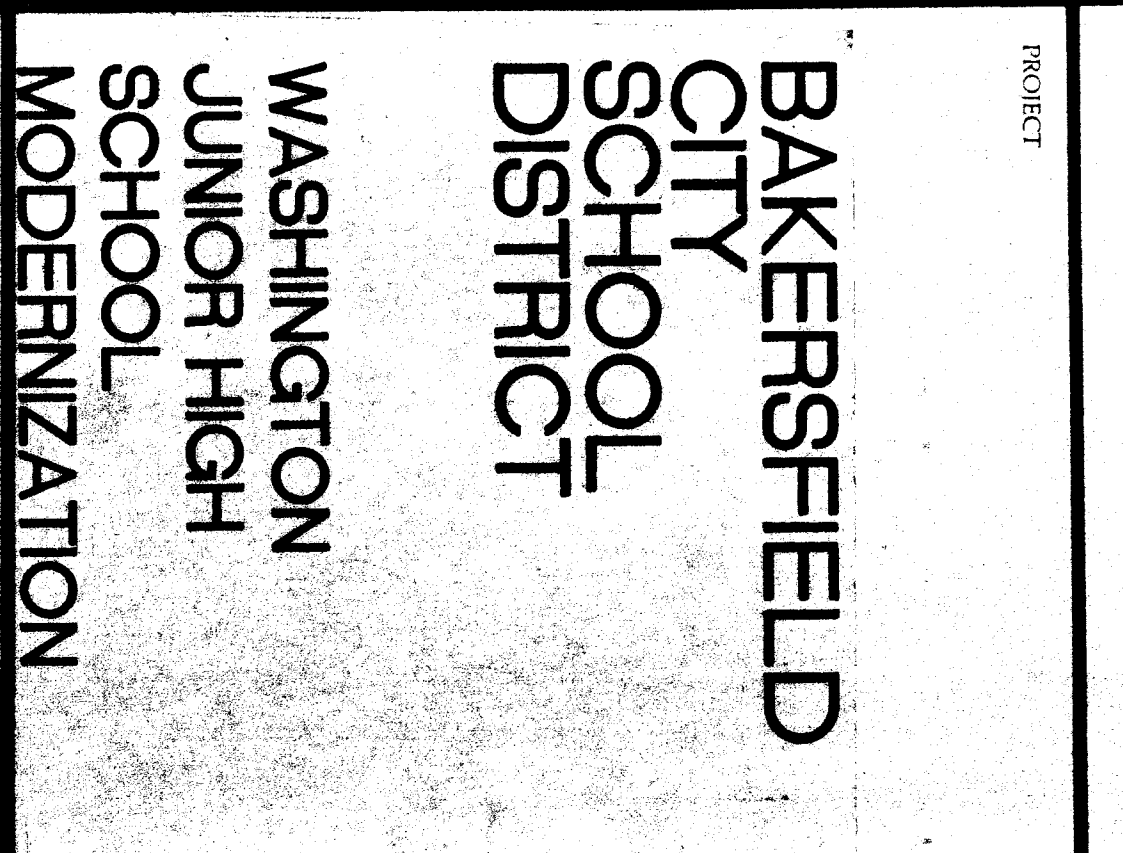
MARK	DUTY	ELECTRICAL	HP	VOLTS	Φ	DESCRIPTION	WT.
1	AIR COOLED CHILLER	158 RLA	460	3	3	TRANE MODEL 18-300-070-000, 180,000 BTU/H, 100% COP, 100% EFFICIENCY, 1150 RPM. PUMP SHALL BE NON-OVERLOADING THROUGHOUT ENTIRE CYCLE. COMPLETE WITH MECHANICAL SEALS, SECTION AND DISCHARGE GAUGE FITTINGS.	6000#
2	ICE STORAGE TANK	-	-	-	-	TRANE MODEL 18-300-070-000, 180,000 BTU/H, 100% COP, 100% EFFICIENCY, 1150 RPM. PUMP SHALL BE NON-OVERLOADING THROUGHOUT ENTIRE CYCLE. COMPLETE WITH MECHANICAL SEALS, SECTION AND DISCHARGE GAUGE FITTINGS.	1700#
3	BOILER	110 FLA	115	1	1	TRANE MODEL 18-300-070-000, 180,000 BTU/H, 100% COP, 100% EFFICIENCY, 1150 RPM. PUMP SHALL BE NON-OVERLOADING THROUGHOUT ENTIRE CYCLE. COMPLETE WITH MECHANICAL SEALS, SECTION AND DISCHARGE GAUGE FITTINGS.	700#
4	SYSTEM PUMP	5	460	3	3	TRANE MODEL 18-300-070-000, 180,000 BTU/H, 100% COP, 100% EFFICIENCY, 1150 RPM. PUMP SHALL BE NON-OVERLOADING THROUGHOUT ENTIRE CYCLE. COMPLETE WITH MECHANICAL SEALS, SECTION AND DISCHARGE GAUGE FITTINGS.	325#
5	CHILLER PUMP	3	460	3	3	TRANE MODEL 18-300-070-000, 180,000 BTU/H, 100% COP, 100% EFFICIENCY, 1150 RPM. PUMP SHALL BE NON-OVERLOADING THROUGHOUT ENTIRE CYCLE. COMPLETE WITH MECHANICAL SEALS, SECTION AND DISCHARGE GAUGE FITTINGS.	200#
6	ICE BOILER PUMP	3	460	3	3	TRANE MODEL 18-300-070-000, 180,000 BTU/H, 100% COP, 100% EFFICIENCY, 1150 RPM. PUMP SHALL BE NON-OVERLOADING THROUGHOUT ENTIRE CYCLE. COMPLETE WITH MECHANICAL SEALS, SECTION AND DISCHARGE GAUGE FITTINGS.	175#
7	BOILER	1	460	3	3	TRANE MODEL 18-300-070-000, 180,000 BTU/H, 100% COP, 100% EFFICIENCY, 1150 RPM. PUMP SHALL BE NON-OVERLOADING THROUGHOUT ENTIRE CYCLE. COMPLETE WITH MECHANICAL SEALS, SECTION AND DISCHARGE GAUGE FITTINGS.	100#
8	UNIT VENTILATOR	1/6	115	1	1	TRANE MODEL 18-300-070-000, 180,000 BTU/H, 100% COP, 100% EFFICIENCY, 1150 RPM. PUMP SHALL BE NON-OVERLOADING THROUGHOUT ENTIRE CYCLE. COMPLETE WITH MECHANICAL SEALS, SECTION AND DISCHARGE GAUGE FITTINGS.	700#
9	HEATING UNIT	15.5 FLA	460	3	3	TRANE MODEL 18-300-070-000, 180,000 BTU/H, 100% COP, 100% EFFICIENCY, 1150 RPM. PUMP SHALL BE NON-OVERLOADING THROUGHOUT ENTIRE CYCLE. COMPLETE WITH MECHANICAL SEALS, SECTION AND DISCHARGE GAUGE FITTINGS.	800#
10	HEATING UNIT	16.3 FLA	460	3	3	TRANE MODEL 18-300-070-000, 180,000 BTU/H, 100% COP, 100% EFFICIENCY, 1150 RPM. PUMP SHALL BE NON-OVERLOADING THROUGHOUT ENTIRE CYCLE. COMPLETE WITH MECHANICAL SEALS, SECTION AND DISCHARGE GAUGE FITTINGS.	700#
11	HEATING-COOLING UNIT	11.0 FLA	460	3	3	TRANE MODEL 18-300-070-000, 180,000 BTU/H, 100% COP, 100% EFFICIENCY, 1150 RPM. PUMP SHALL BE NON-OVERLOADING THROUGHOUT ENTIRE CYCLE. COMPLETE WITH MECHANICAL SEALS, SECTION AND DISCHARGE GAUGE FITTINGS.	675#
12	AIR HANDLER	2	460	3	3	TRANE MODEL 18-300-070-000, 180,000 BTU/H, 100% COP, 100% EFFICIENCY, 1150 RPM. PUMP SHALL BE NON-OVERLOADING THROUGHOUT ENTIRE CYCLE. COMPLETE WITH MECHANICAL SEALS, SECTION AND DISCHARGE GAUGE FITTINGS.	1000#
13	AIR HANDLER	1/2	460	3	3	TRANE MODEL 18-300-070-000, 180,000 BTU/H, 100% COP, 100% EFFICIENCY, 1150 RPM. PUMP SHALL BE NON-OVERLOADING THROUGHOUT ENTIRE CYCLE. COMPLETE WITH MECHANICAL SEALS, SECTION AND DISCHARGE GAUGE FITTINGS.	875#
14	AIR HANDLER	3	460	3	3	TRANE MODEL 18-300-070-000, 180,000 BTU/H, 100% COP, 100% EFFICIENCY, 1150 RPM. PUMP SHALL BE NON-OVERLOADING THROUGHOUT ENTIRE CYCLE. COMPLETE WITH MECHANICAL SEALS, SECTION AND DISCHARGE GAUGE FITTINGS.	1200#
15	UNIT VENTILATOR	1/6	115	1	1	TRANE MODEL 18-300-070-000, 180,000 BTU/H, 100% COP, 100% EFFICIENCY, 1150 RPM. PUMP SHALL BE NON-OVERLOADING THROUGHOUT ENTIRE CYCLE. COMPLETE WITH MECHANICAL SEALS, SECTION AND DISCHARGE GAUGE FITTINGS.	650#
16	HEATING-COOLING UNIT	17.0	208	1	1	TRANE MODEL 18-300-070-000, 180,000 BTU/H, 100% COP, 100% EFFICIENCY, 1150 RPM. PUMP SHALL BE NON-OVERLOADING THROUGHOUT ENTIRE CYCLE. COMPLETE WITH MECHANICAL SEALS, SECTION AND DISCHARGE GAUGE FITTINGS.	400#

NOTES: 1. ALL ROOF MOUNTED MECHANICAL EQUIPMENT TO BE PROVIDED WITH SPRING ISOLATORS WITH SEISMIC RESTRAINTS.
 2. PROVIDE FIELD FABRICATED CURB FOR ALL ROOF MOUNTED MECHANICAL EQUIPMENT BY SPEC SECTION 15500. SEE STRUCTURAL DETAILS SHEETS 5-1 & 5-3. FURNISH SHOP DRAWINGS FOR REVIEW & ACCEPTANCE BEFORE FABRICATION OF STRUCTURAL STEEL SUPPORT.



RENPERO RUSSELL & ASSOCIATES
 Architecture • Engineering • Interior Design/Space Planning
 Donald W. Renfro, AIA
 Mark E. Russell, AIA
 4800 Nicollet Avenue, Suite 300, Minneapolis, Minnesota 55426-3273
 C-238
 C-1278

BAKERSFIELD CITY SCHOOL DISTRICT
 WASHINGTON JUNIOR HIGH SCHOOL MODERNIZATION
 PROJECT
 FRANK MITCHELL ARCHITECTS
 JOHN FRANK MITCHELL, INC.
 CONSULTING MECHANICAL ENGINEERS
 1411 WEST ZEPHYRUS STREET
 MINNEAPOLIS, MINNESOTA 55404
 6510 2



BAKERSFIELD CITY SCHOOL DISTRICT BOARD OF SUPERVISORS
 DATE: APPROVED
 DATE: ISSUED FOR BIDDING
 7-3-41
 DATE: REVISIONS

SCHEDULES AND DETAILS
 SHEET NUMBER: M-2
 SHEETS: 5
 APPROVED ARCHITECT: [Signature]
 CHECKED: JFM
 DRAWN BY: MWS
 DATE: 8-1-49
 PROJECT NO: 64-24-W