

**BAKERSFIELD CITY SCHOOL DISTRICT  
 JUNIOR HIGH SCHOOL  
 MODERNIZATION**

**WASHINGTON JUNIOR HIGH SCHOOL MODERNIZATION**

THE ABOVE DRAWINGS AND SPECIFICATIONS AND DATA HEREBY SUBMITTED ARE THE PROPERTY OF RENPRO RUSSELL & ASSOCIATES AND ARE TO BE USED ONLY FOR THE PROJECT AND SITE SPECIFICALLY IDENTIFIED HEREIN. NO PART OF THESE DRAWINGS OR SPECIFICATIONS ARE TO BE REPRODUCED OR TRANSMITTED IN ANY FORM OR BY ANY MEANS, ELECTRONIC OR MECHANICAL, INCLUDING PHOTOCOPYING, RECORDING, OR BY ANY INFORMATION STORAGE AND RETRIEVAL SYSTEM, WITHOUT THE WRITTEN PERMISSION OF RENPRO RUSSELL & ASSOCIATES. ANY REPRODUCTION OR TRANSMISSION OF THESE DRAWINGS OR SPECIFICATIONS WITHOUT THE WRITTEN PERMISSION OF RENPRO RUSSELL & ASSOCIATES IS STRICTLY PROHIBITED AND WILL BE PROSECUTED TO THE FULL EXTENT OF THE LAW.

KEY PLAN

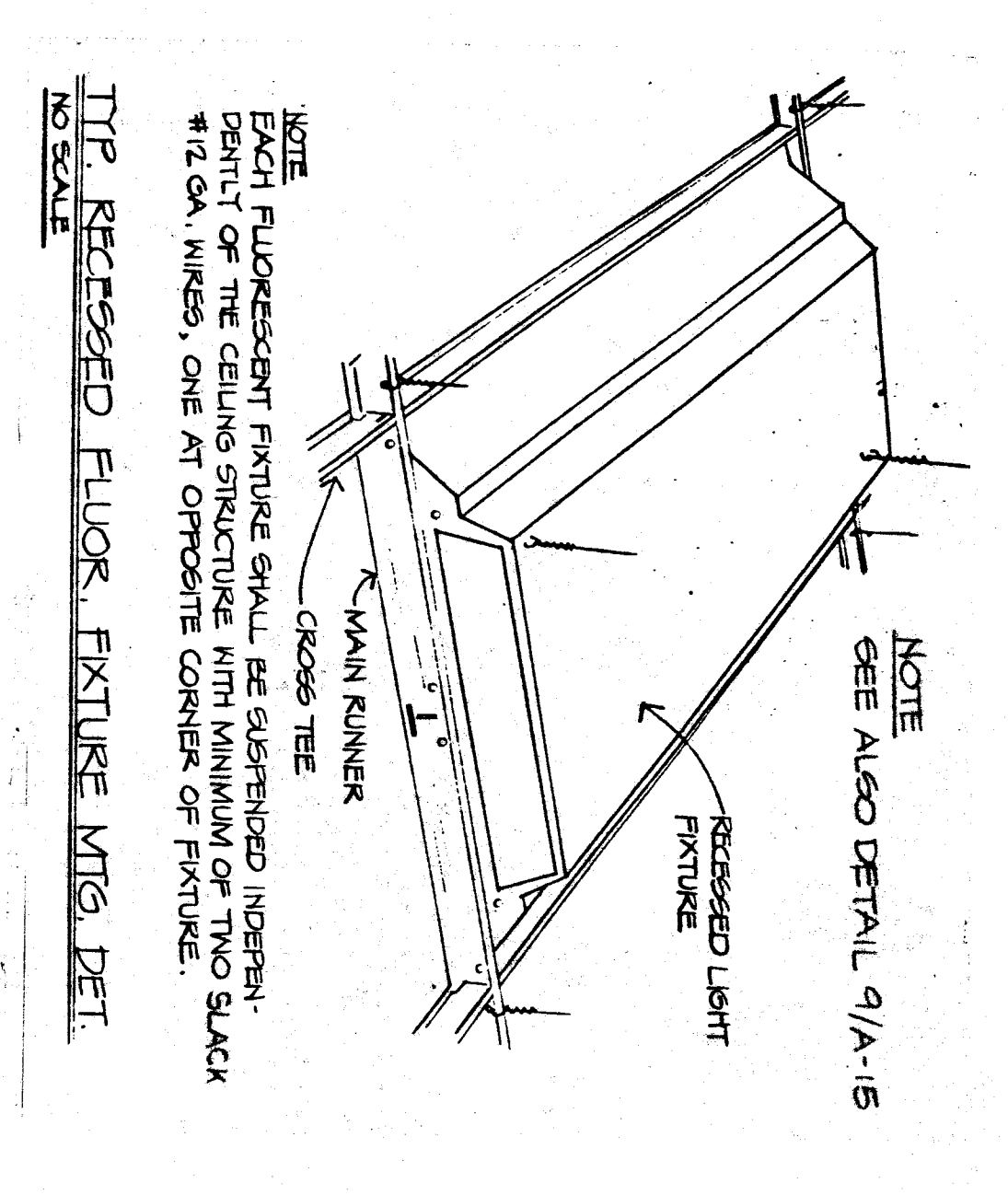
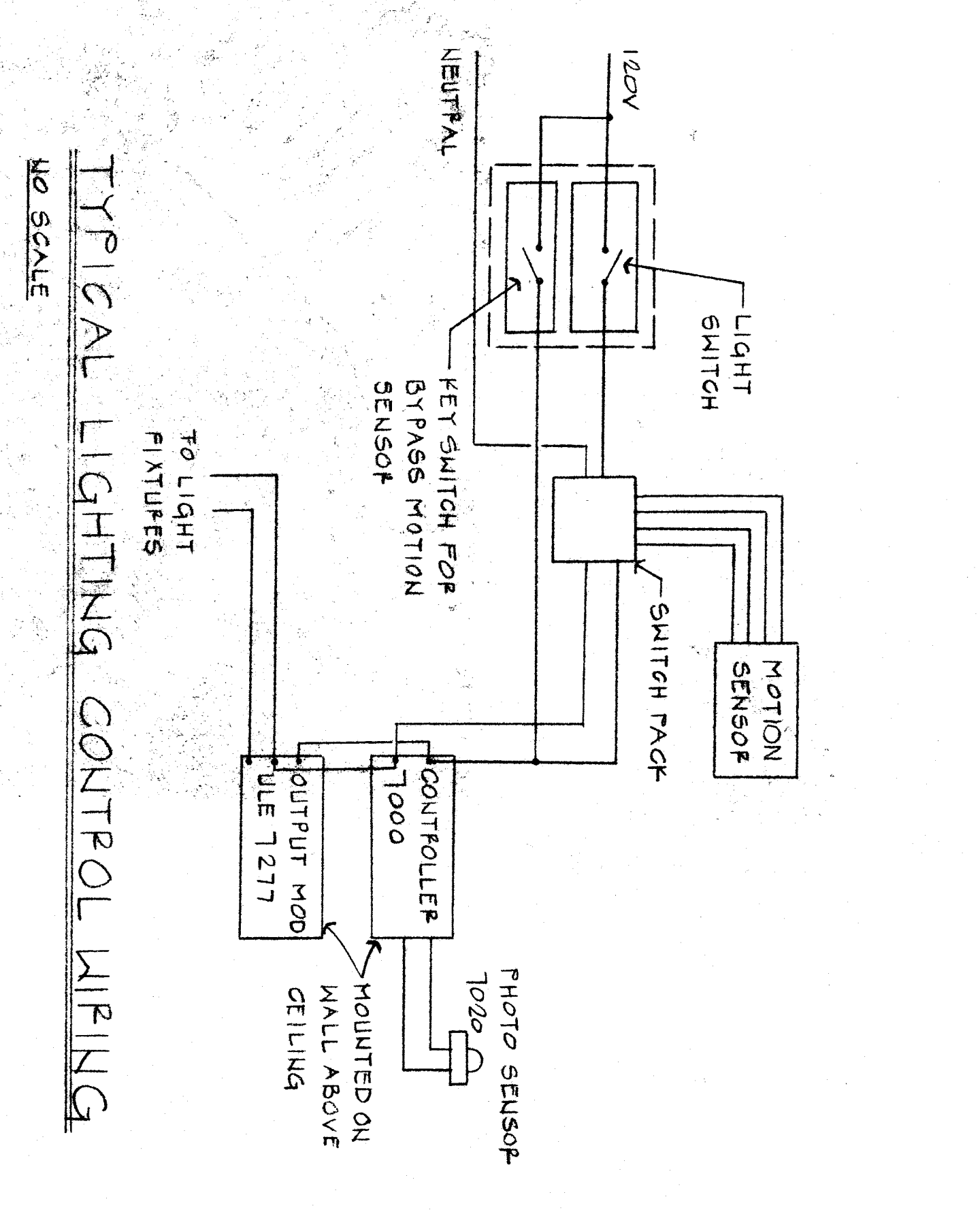
DATE: APPROVED: \_\_\_\_\_  
 DATE: \_\_\_\_\_  
 ISSUED FOR: \_\_\_\_\_  
 DATE: 9-2-11  
 CHECKED: E.W.  
 DRAWN BY: G.K.  
 SHEET NUMBER: 96016W2008  
 OF 9 SHEETS

BAKERSFIELD CITY SCHOOL DISTRICT BOARD OF EDUCATION

DATE: APPROVED: \_\_\_\_\_  
 DATE: \_\_\_\_\_  
 ISSUED FOR: \_\_\_\_\_  
 DATE: 9-2-11  
 CHECKED: E.W.  
 DRAWN BY: G.K.  
 SHEET NUMBER: 96016W2008  
 OF 9 SHEETS

**LIGHT FIXTURE SCHEDULE**

TYPE	DESCRIPTION	LAMPS	MOUNTING	LOCATION
A	LITHONIA #25FQ40PHMA12-128-217FS	2 F40	RECESSED	CLASSROOM
B	MARCO #BU2	40W	MULTI-SPOT	RECH. SENS. ENCLOSURE

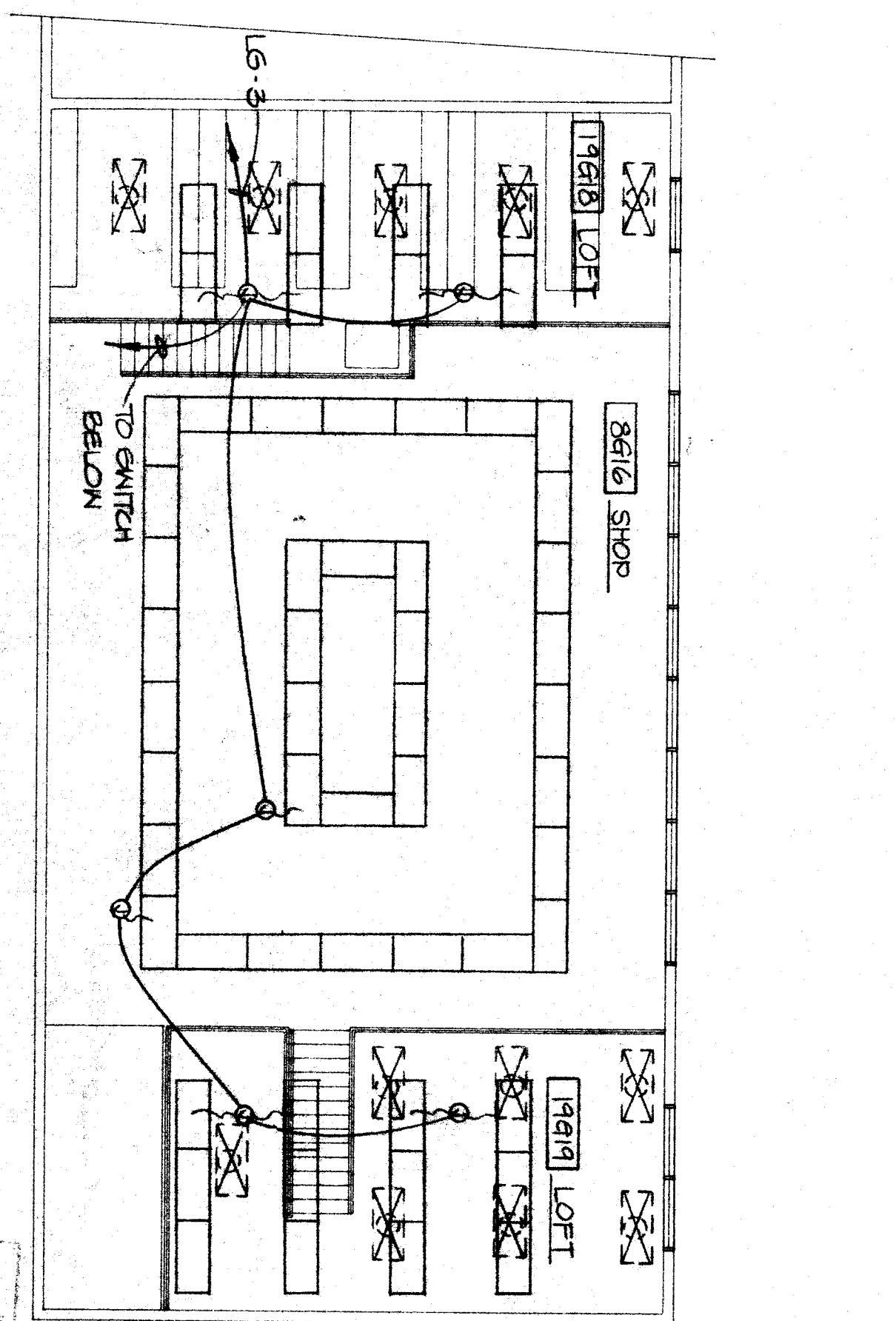
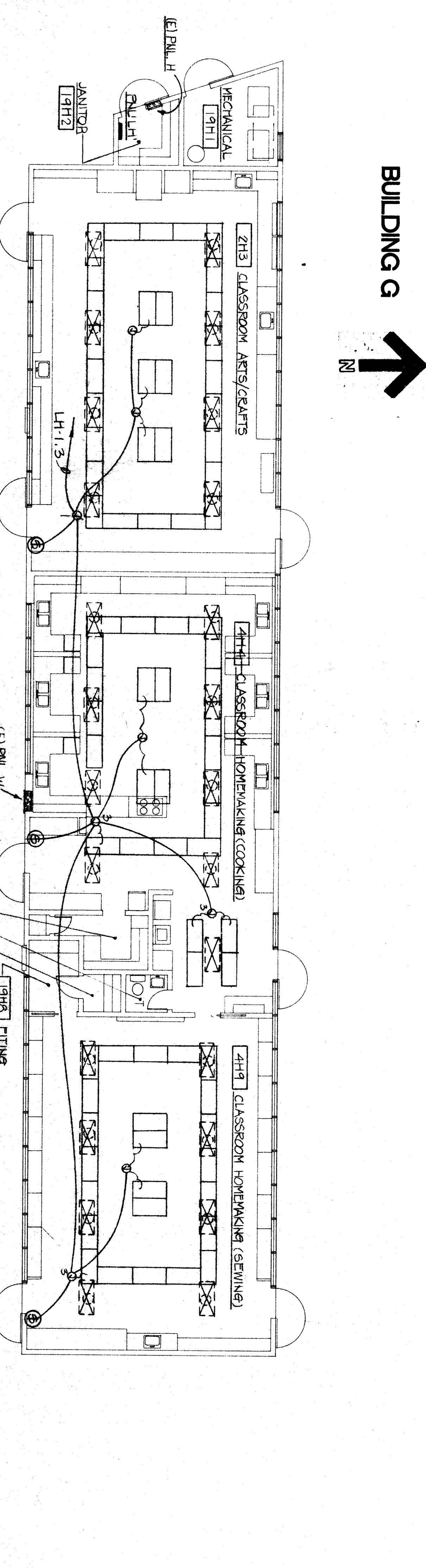
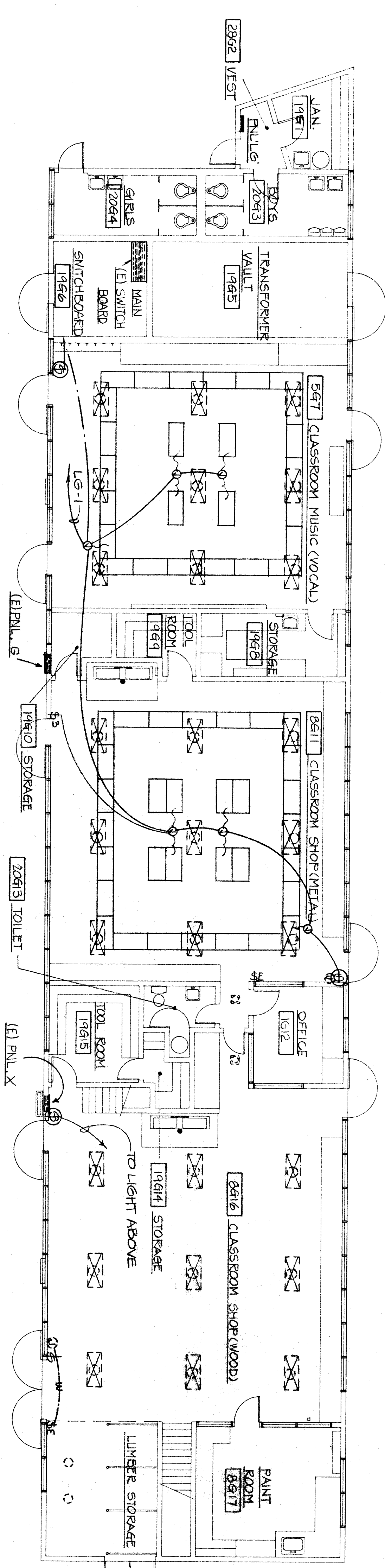


**ELECTRICAL PANEL-L6**

CIRC. BREAKER NO.	AMP. POLE	REMARKS	A	B	C
1	20	LIGHTS	4120		
2	20	SPARE		4350	
3	20	LIGHTS		4350	
4	20	AC UNIT		7320	
5	20	AC UNIT		7320	
6	20	AC UNIT		7320	
7	20	AC UNIT		7320	
8	20	AC UNIT		7320	
9	20	AC UNIT		7320	
10	50	SPARE		1680	
11	50	SPARE		1680	
12	50	SPARE		1680	
13	50	SPARE		1680	
14	50	SPARE		1680	
15	50	SPARE		1680	
16	50	SPARE		1680	
17	50	SPARE		1680	
18	50	SPARE		1680	
TOTAL WATT:			38220	38220	38220
TOTAL CONNECTED LOAD:			25 KVA	25 KVA	25 KVA
MAINS: 30A/3P			25 KVA	25 KVA	25 KVA
FEEDER: 11C-4#8 (CU THW)			41A	41A	41A

**ELECTRICAL PANEL-L4**

CIRC. BREAKER NO.	AMP. POLE	REMARKS	A	B	C
1	20	LIGHTS	2160		
2	20	SPARE		2160	
3	20	LIGHTS		2160	
4	20	AC UNIT		2160	
5	20	AC UNIT		2160	
6	20	AC UNIT		2160	
7	20	AC UNIT		2160	
8	20	AC UNIT		2160	
9	20	AC UNIT		2160	
10	20	AC UNIT		2160	
11	20	AC UNIT		2160	
12	20	AC UNIT		2160	
13	20	AC UNIT		2160	
14	20	AC UNIT		2160	
15	20	AC UNIT		2160	
16	20	AC UNIT		2160	
17	20	AC UNIT		2160	
18	20	AC UNIT		2160	
TOTAL WATT:			38220	38220	38220
TOTAL CONNECTED LOAD:			11 KVA	11 KVA	11 KVA
MAINS: 30A/3P			11 KVA	11 KVA	11 KVA
FEEDER: 11C-4#8 (CU THW)			22A	22A	22A



DATE: 9-2-11  
 PROJECT NO. 96-216W

**E-4**