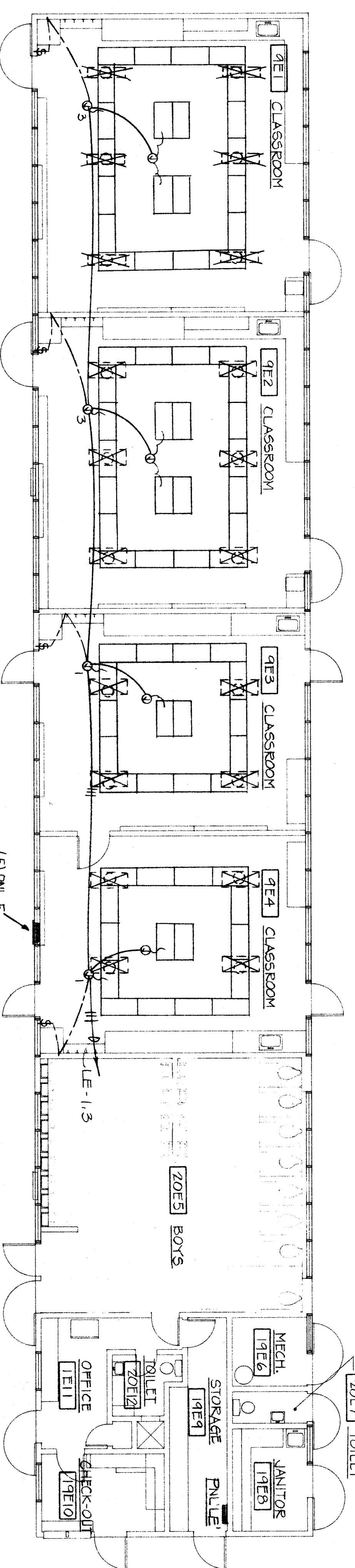


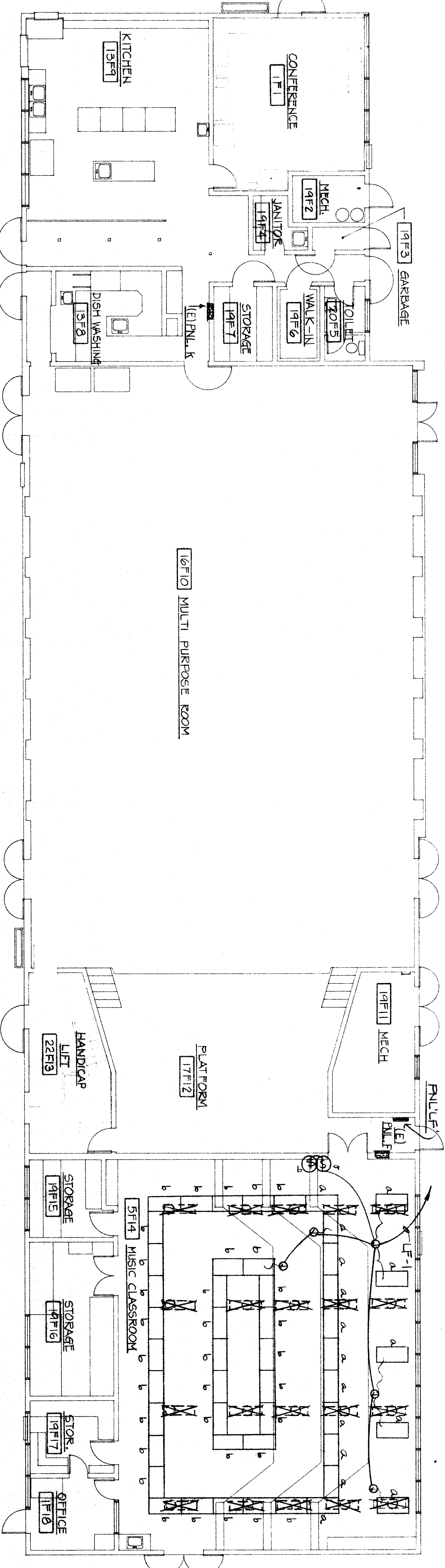
ELECT. PANEL - LD		277/480V 3Ø 4W	
CIRC. BREAKER NO.	REMARKS	WATT	AMPS
1	20 1 LIGHTING	1590	7.2
2	20 2 LIGHTING	2300	10.8
3	20 3 LIGHTING	3170	15.0
4	20 4 LIGHTING	3170	15.0
5	20 5 LIGHTING	3170	15.0
6	20 6 LIGHTING	3170	15.0
7	20 7 LIGHTING	3170	15.0
8	20 8 LIGHTING	3170	15.0
9	20 9 LIGHTING	3170	15.0
10	20 10 LIGHTING	3170	15.0
11	20 11 LIGHTING	3170	15.0
12	20 12 LIGHTING	3170	15.0
13	20 13 LIGHTING	3170	15.0
14	20 14 LIGHTING	3170	15.0
15	20 15 LIGHTING	3170	15.0
16	20 16 LIGHTING	3170	15.0
17	20 17 LIGHTING	3170	15.0
18	20 18 LIGHTING	3170	15.0
TOTAL WATT:		10360	49.3
TOTAL CONNECTED LOAD:		12820	60.7
MAINS: 100A/3P CIRC. BRKR.		MAX. AMP. @ 16A	
FEEDER: 1/2" C-4 #2 (CU THW)			

BUILDING D
N



ELECT. PANEL - E		277/480V 3Ø 4W	
CIRC. BREAKER NO.	REMARKS	WATT	AMPS
1	20 1 LIGHTING	2300	10.8
2	20 2 LIGHTING	3170	15.0
3	20 3 LIGHTING	3170	15.0
4	20 4 LIGHTING	3170	15.0
5	20 5 LIGHTING	3170	15.0
6	20 6 LIGHTING	3170	15.0
7	20 7 LIGHTING	3170	15.0
8	20 8 LIGHTING	3170	15.0
9	20 9 LIGHTING	3170	15.0
10	20 10 LIGHTING	3170	15.0
11	20 11 LIGHTING	3170	15.0
12	20 12 LIGHTING	3170	15.0
13	20 13 LIGHTING	3170	15.0
14	20 14 LIGHTING	3170	15.0
15	20 15 LIGHTING	3170	15.0
16	20 16 LIGHTING	3170	15.0
17	20 17 LIGHTING	3170	15.0
18	20 18 LIGHTING	3170	15.0
TOTAL WATT:		2300	10.8
TOTAL CONNECTED LOAD:		6170	28.9
MAINS: 50A/3P CIRC. BRKR.		MAX. AMP. @ 11A	
FEEDER: 1" C-4 #8 (CU THW)			

BUILDING E
N



BUILDING F
N

ELECT. PANEL - F		277/480V 3Ø 4W	
CIRC. BREAKER NO.	REMARKS	WATT	AMPS
1	20 1 LIGHTING	3530	16.5
2	20 2 LIGHTING	4290	20.0
3	20 3 LIGHTING	4290	20.0
4	20 4 LIGHTING	4290	20.0
5	20 5 LIGHTING	4290	20.0
6	20 6 LIGHTING	4290	20.0
7	20 7 LIGHTING	4290	20.0
8	20 8 LIGHTING	4290	20.0
9	20 9 LIGHTING	4290	20.0
10	20 10 LIGHTING	4290	20.0
11	20 11 LIGHTING	4290	20.0
12	20 12 LIGHTING	4290	20.0
13	20 13 LIGHTING	4290	20.0
14	20 14 LIGHTING	4290	20.0
15	20 15 LIGHTING	4290	20.0
16	20 16 LIGHTING	4290	20.0
17	20 17 LIGHTING	4290	20.0
18	20 18 LIGHTING	4290	20.0
19	20 19 LIGHTING	4290	20.0
20	20 20 LIGHTING	4290	20.0
21	20 21 LIGHTING	4290	20.0
22	20 22 LIGHTING	4290	20.0
23	20 23 LIGHTING	4290	20.0
24	20 24 LIGHTING	4290	20.0
TOTAL WATT:		23530	110.6
TOTAL CONNECTED LOAD:		6170	28.9
MAINS: 150A/3P CIRC. BRKR.		MAX. AMP. @ 8.6A	
FEEDER: 2" C-4 #10 (CU THW)			

NOTE
SEE SHEET E-4 FOR LIGHT
FIXTURE TYPE.

**RENPRO
RUSSELL &
ASSOCIATES**
Architecture • Engineering • Interior Design/Space Planning

Donald W. Renfro AIA
Mark E. Russell AIA
C 5283
C 13726

4800 Sandstone Highway, Suite 204, Sandstone, California 95070 (916) 337-7075

CONSULTANTS
Eldredge Wu
Eldredge Wu
208 Building Electrical Engineer
327 N. Eldredge Ave., Fresno, Calif.
Telephone: (559) 281-4444

PROJECT
**BAKERSFIELD
CITY
SCHOOL
DISTRICT**

**WASHINGTON
JUNIOR HIGH
SCHOOL
MODERNIZATION**

THE ABOVE DRAWINGS AND SPECIFICATIONS AND THEIR INTERPRETATION SHALL BE THE SOLE RESPONSIBILITY OF THE ARCHITECT. THE CONTRACTOR SHALL BE RESPONSIBLE FOR OBTAINING ALL NECESSARY PERMITS AND FOR THE PROTECTION OF ALL UTILITIES. THE CONTRACTOR SHALL BE RESPONSIBLE FOR THE PROTECTION OF ALL UTILITIES. THE CONTRACTOR SHALL BE RESPONSIBLE FOR THE PROTECTION OF ALL UTILITIES.

KEY PLAN
A
B
C
H

BAKERSFIELD CITY SCHOOL DISTRICT
BOARD OF EDUCATION
DATE APPROVED
DATE ISSUED FOR PERMITS
DATE FOR CONSTRUCTION

SHEET TITLE
ELECTRICAL LIGHTING PLANS
BUILDINGS DEF

APPROVED ARCHITECT
CHECKED E/W
DRAWN BY GK
PROJECT NO. 86-216W
SHEET NUMBER
86216W-238B

OF 8 SHEETS
E-3