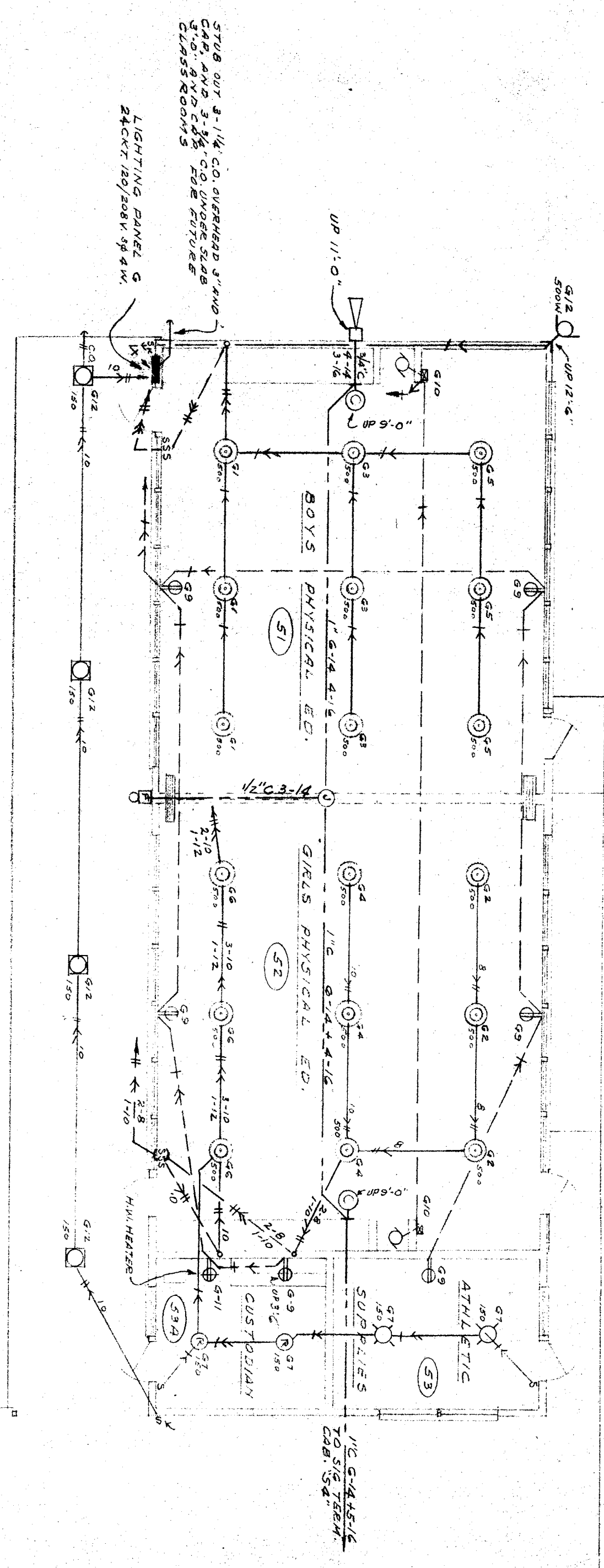
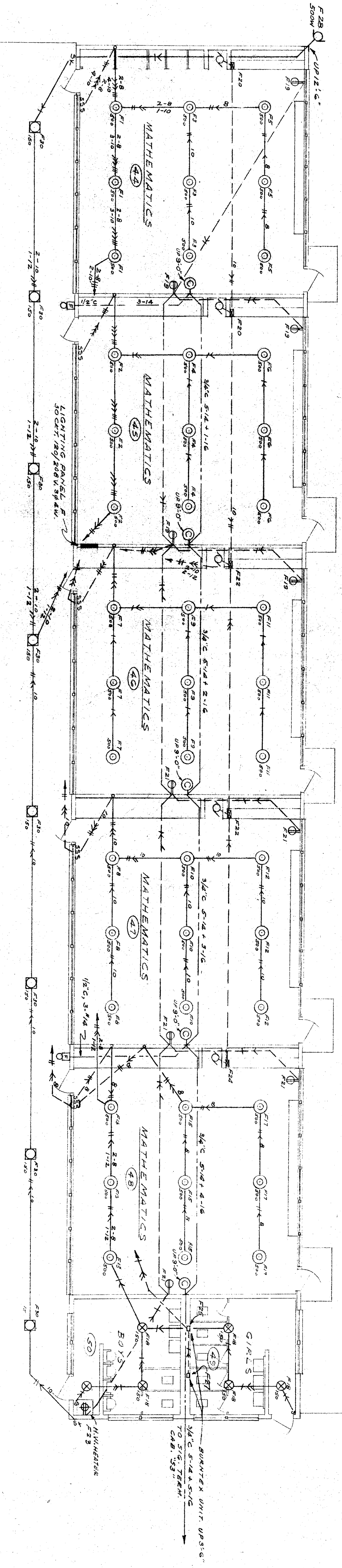


LIGHTING PANEL F					
LOCATION: ROOM 405					
MOUNTING: FLUSH					
MAIN: 100% ONLY					
MATHS 103					
FEED: BOTTOM	CRT	AMP. LTR. AMP.	WATTS	LOCATION	
1	1	15	1500	MATHS 103	44
2	1	15	1500	MATHS 103	44
3	1	15	1500	MATHS 103	44
4	1	15	1500	MATHS 103	44
5	1	15	1500	MATHS 103	44
6	1	15	1500	MATHS 103	44
7	1	15	1500	MATHS 103	44
8	1	15	1500	MATHS 103	44
9	1	15	1500	MATHS 103	44
10	1	15	1500	MATHS 103	44
11	1	15	1500	MATHS 103	44
12	1	15	1500	MATHS 103	44
13	1	15	1500	MATHS 103	44
14	1	15	1500	MATHS 103	44
15	1	15	1500	MATHS 103	44
16	1	15	1500	MATHS 103	44
17	1	15	1500	MATHS 103	44
18	1	15	1500	MATHS 103	44
19	1	15	1500	MATHS 103	44
20	1	15	1500	MATHS 103	44
21	1	15	1500	MATHS 103	44
22	1	15	1500	MATHS 103	44
23	1	15	1500	MATHS 103	44
24	1	15	1500	MATHS 103	44
25	1	15	1500	MATHS 103	44
26	1	15	1500	MATHS 103	44
27	1	15	1500	MATHS 103	44
28	1	15	1500	MATHS 103	44
29	1	15	1500	MATHS 103	44
30	1	15	1500	MATHS 103	44
TOTAL			13500 (1800) 14300		

LIGHTING PANEL G					
LOCATION: CORRIDOR					
MOUNTING: FLUSH					
MAIN: 100% ONLY					
MATHS 103					
FEED: BOTTOM	CRT	AMP. LTR. AMP.	WATTS	LOCATION	
1	1	15	1500	BIVS R.E. 21	44
2	1	15	1500	BIVS R.E. 21	44
3	1	15	1500	BIVS R.E. 21	44
4	1	15	1500	BIVS R.E. 21	44
5	1	15	1500	BIVS R.E. 21	44
6	1	15	1500	BIVS R.E. 21	44
7	1	15	1500	BIVS R.E. 21	44
8	1	15	1500	BIVS R.E. 21	44
9	1	15	1500	BIVS R.E. 21	44
10	1	15	1500	BIVS R.E. 21	44
11	1	15	1500	BIVS R.E. 21	44
12	1	15	1500	BIVS R.E. 21	44
13	1	15	1500	BIVS R.E. 21	44
14	1	15	1500	BIVS R.E. 21	44
15	1	15	1500	BIVS R.E. 21	44
16	1	15	1500	BIVS R.E. 21	44
17	1	15	1500	BIVS R.E. 21	44
18	1	15	1500	BIVS R.E. 21	44
19	1	15	1500	BIVS R.E. 21	44
20	1	15	1500	BIVS R.E. 21	44
21	1	15	1500	BIVS R.E. 21	44
22	1	15	1500	BIVS R.E. 21	44
23	1	15	1500	BIVS R.E. 21	44
24	1	15	1500	BIVS R.E. 21	44
25	1	15	1500	BIVS R.E. 21	44
26	1	15	1500	BIVS R.E. 21	44
27	1	15	1500	BIVS R.E. 21	44
28	1	15	1500	BIVS R.E. 21	44
29	1	15	1500	BIVS R.E. 21	44
30	1	15	1500	BIVS R.E. 21	44
TOTAL			10100 (1780) 11880		



**LESTER R. KELLY**  
 MECHANICAL AND ELECTRICAL  
 CONSULTING ENGINEER  
 443 SOUTH BEAUFORT AVENUE  
 LOS ANGELES CALIF.

COUNTY OF KERN  
 OFFICE OF SUPERINTENDENT OF SCHOOLS  
 JESSE B. STOCKTON  
 SUPERINTENDENT

STATE OF CALIFORNIA  
 DEPARTMENT OF PUBLIC WORKS  
 DIVISION OF ARCHITECTURE

BAKERSFIELD CITY SCHOOLS  
 1600 K ST. BAKERSFIELD, CALIFORNIA  
 BOARD OF EDUCATION

JUNIOR HIGH SCHOOL  
 BAKERSFIELD CITY SCHOOL DISTRICT  
 BELLE TERRACE & P STREETS  
 BAKERSFIELD CALIFORNIA  
**ERNEST L. MCGOY - AIA - ARCHITECT**  
 107 19th ST. CALIFORNIA

DRAWN BY: *[Signature]*  
 CHECKED BY: *[Signature]*  
 DATE: 5-1-57

APPROVED: *[Signature]*  
 DATE:

APPROVED: *[Signature]*  
 DATE:

APPROVED: *[Signature]*  
 DATE:

JOB NO. 255  
 DATE 5-1-57

SHEET NO. E-4  
 OF 5 SHEETS

FLOOR PLANS UNITS F & G ELECTRICAL

CHECK AND VERIFY ALL DIMENSIONS BEFORE PROCEEDING WITH THE WORK. REPORT ANY DISCREPANCIES TO ARCHITECT.