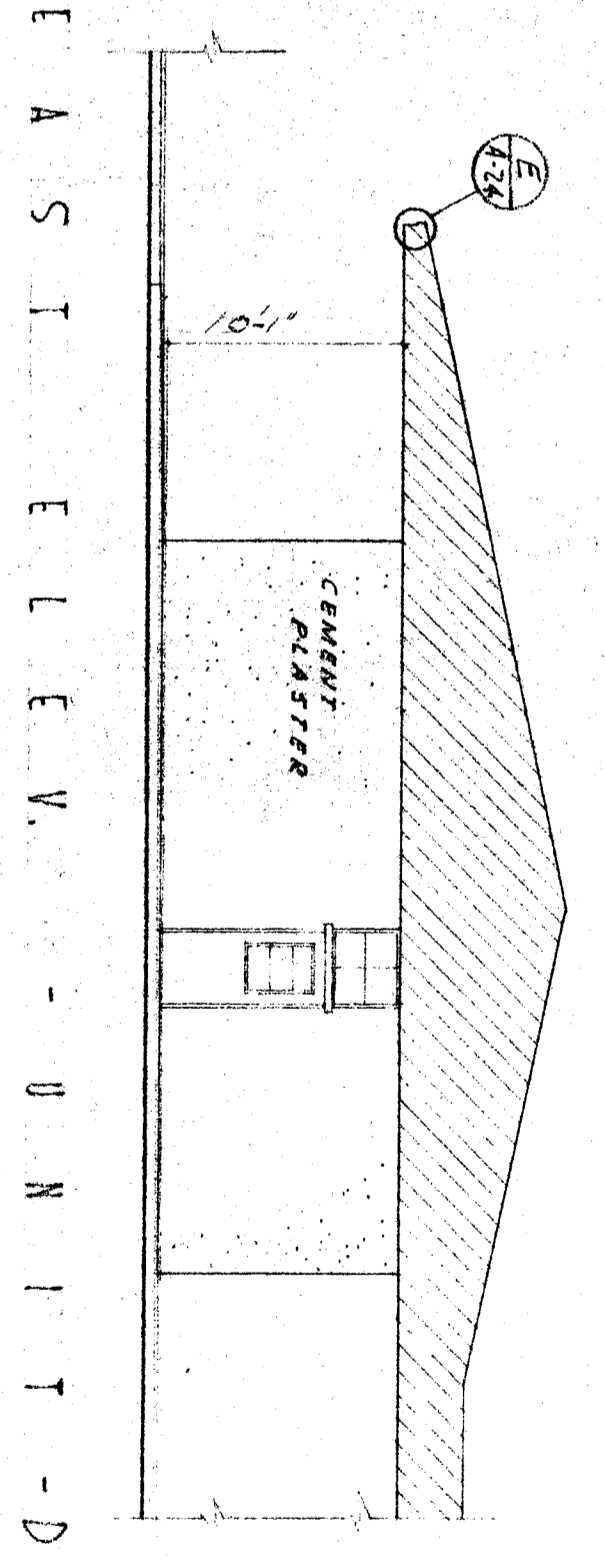
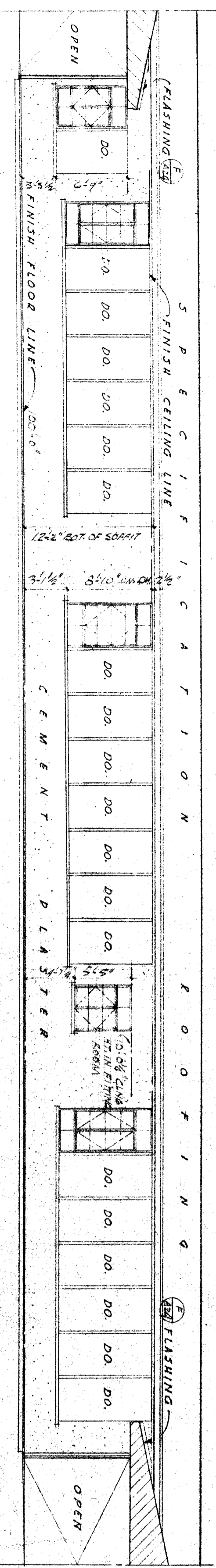


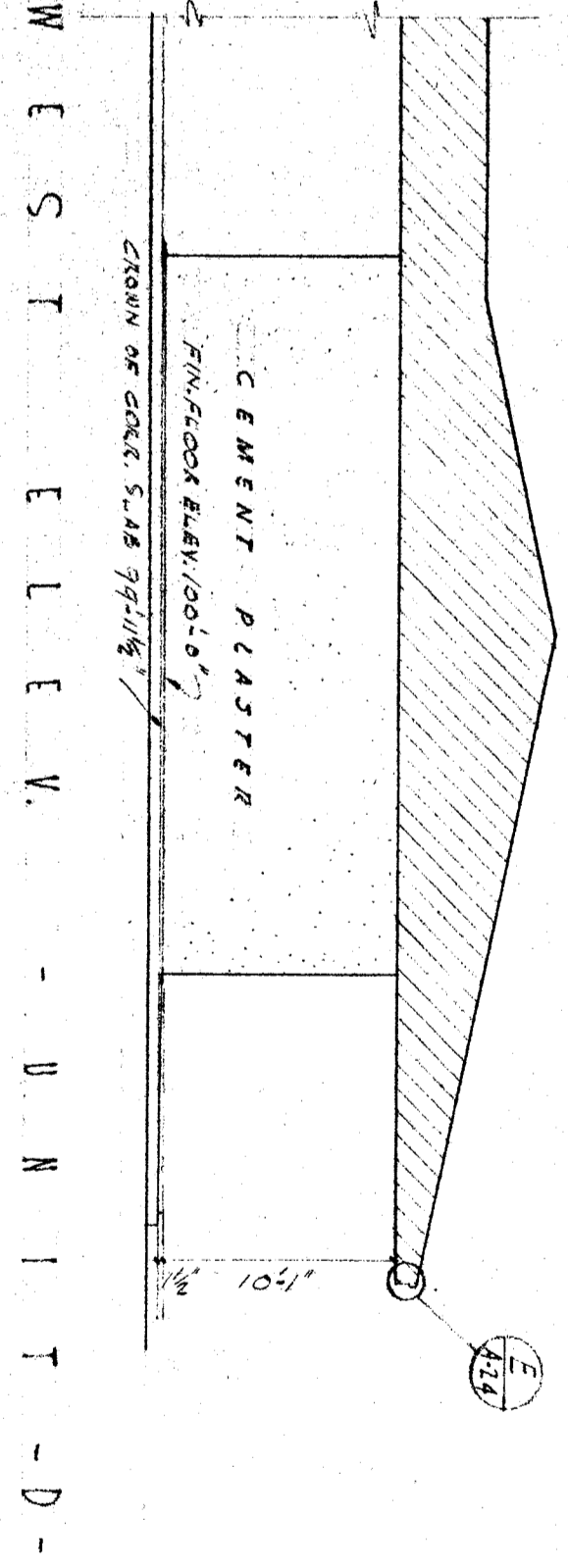
SOUTH ELEVATION - UNIT - D -



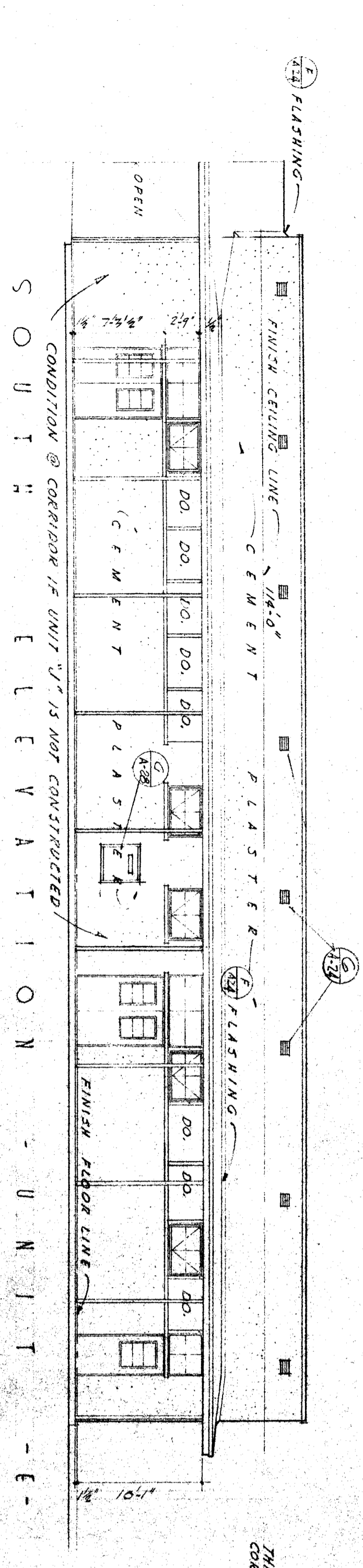
EAST ELEVATION - UNIT - D -



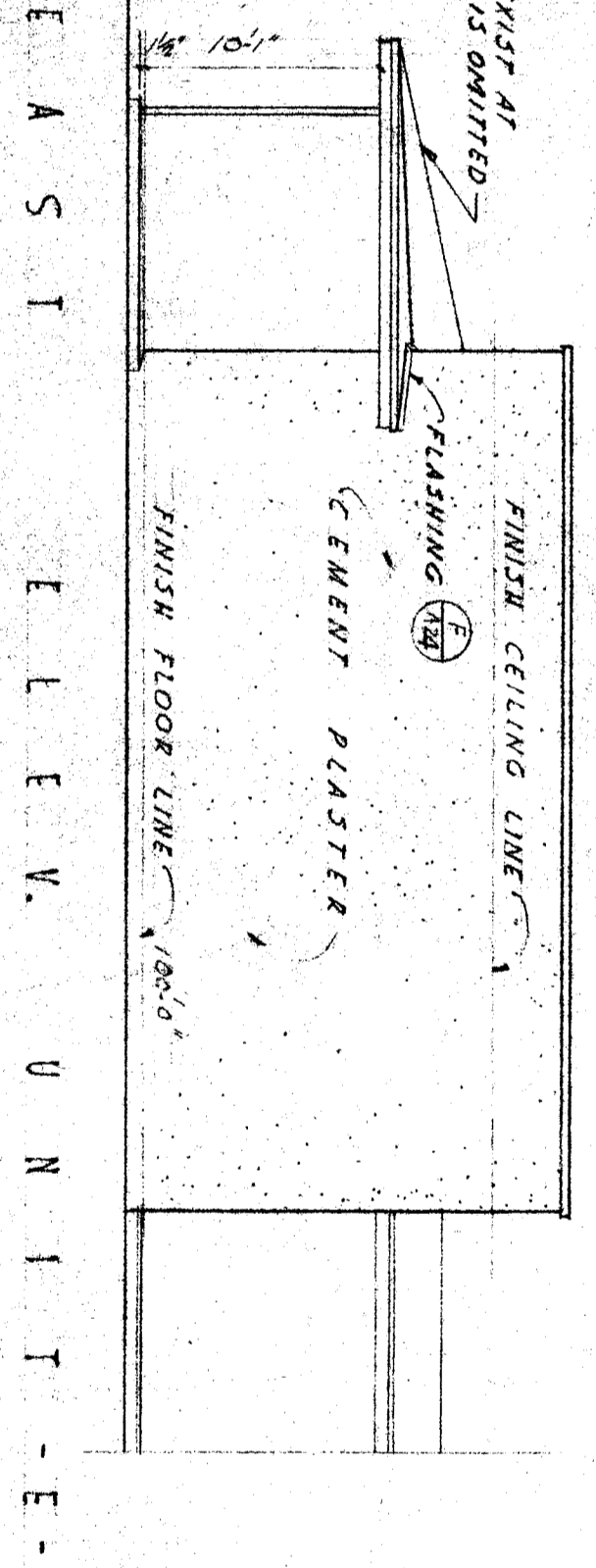
NORTH ELEVATION - UNIT - D -



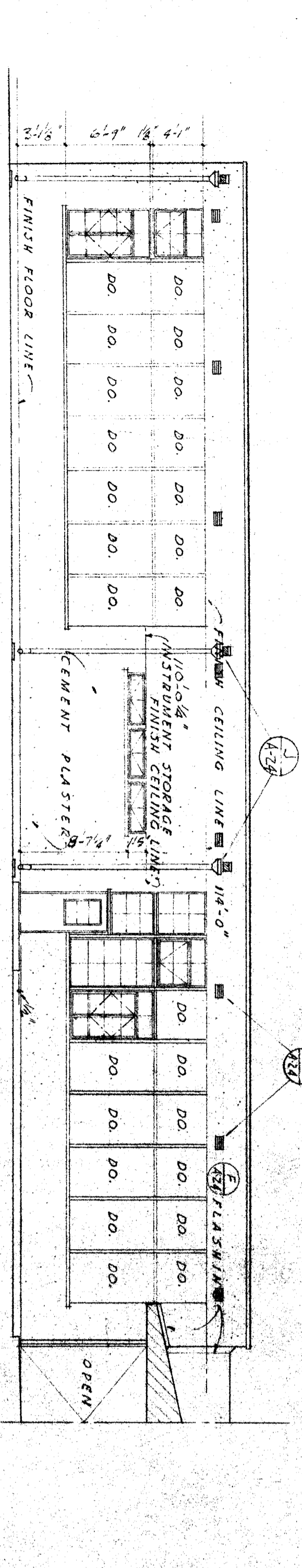
WEST ELEVATION - UNIT - D -



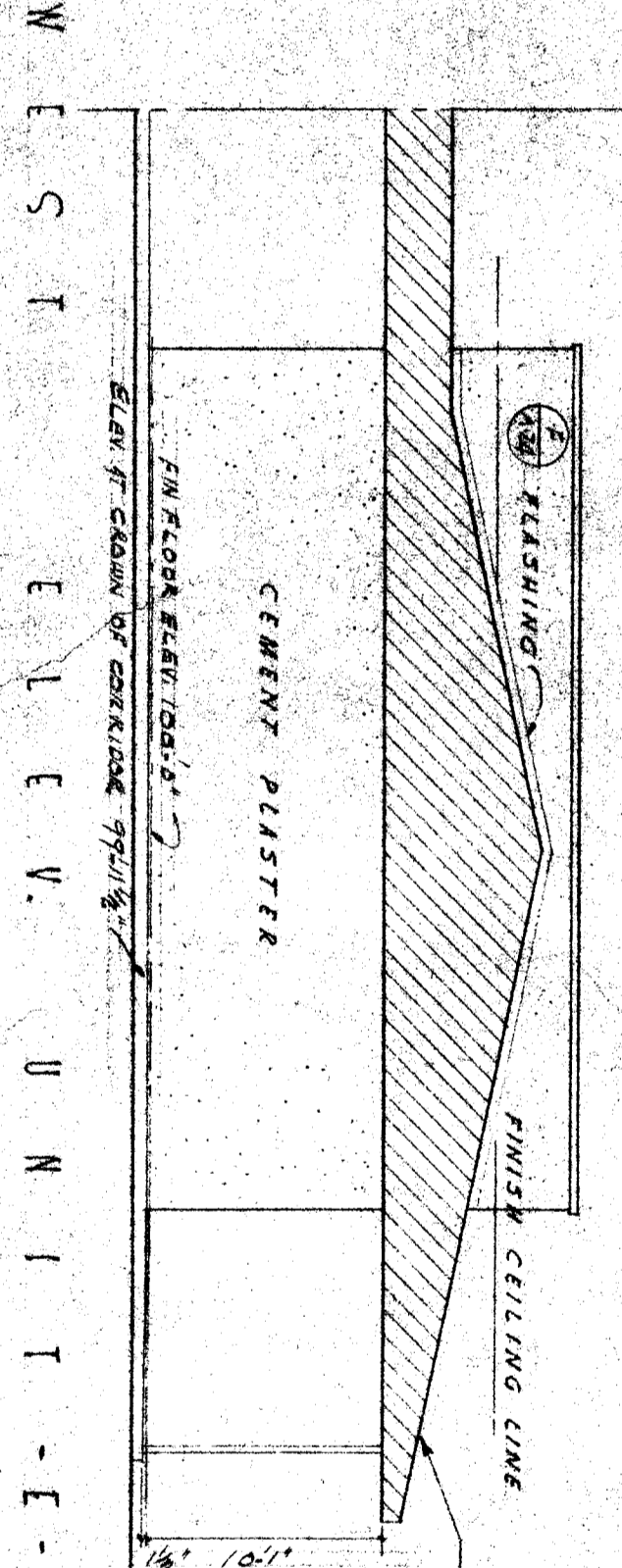
SOUTH ELEVATION - UNIT - E -



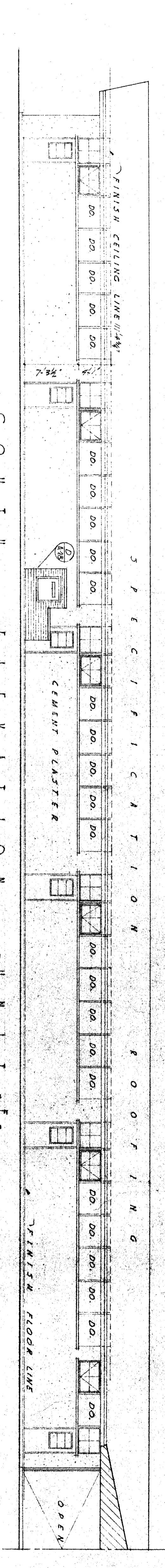
EAST ELEVATION - UNIT - E -



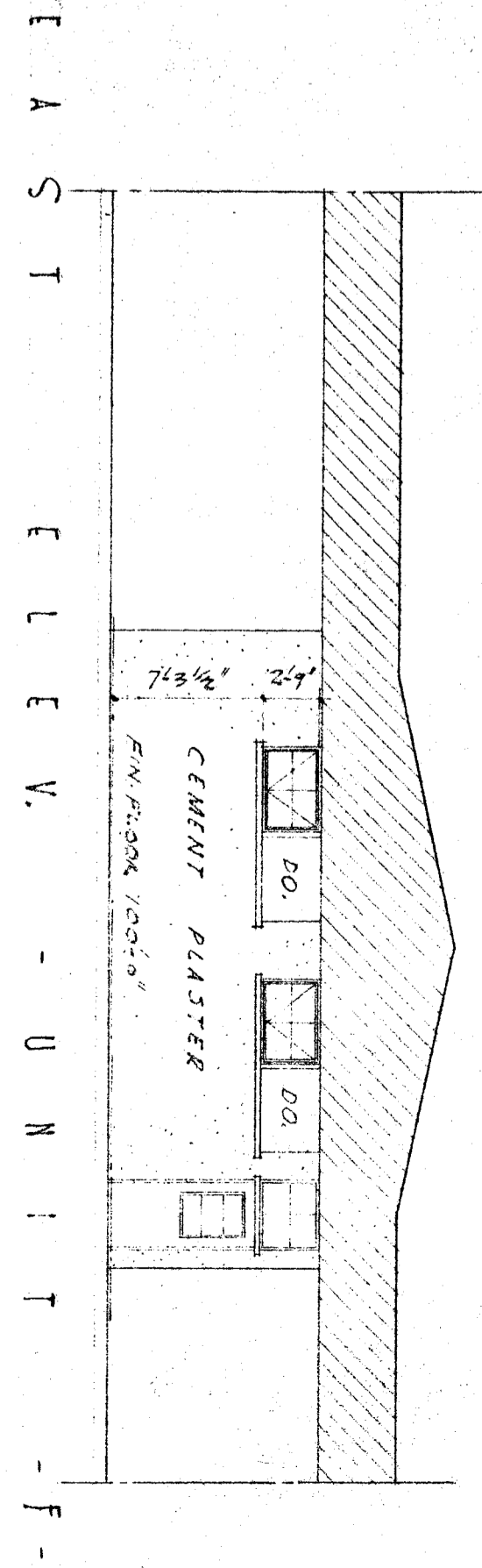
NORTH ELEVATION - UNIT - E -



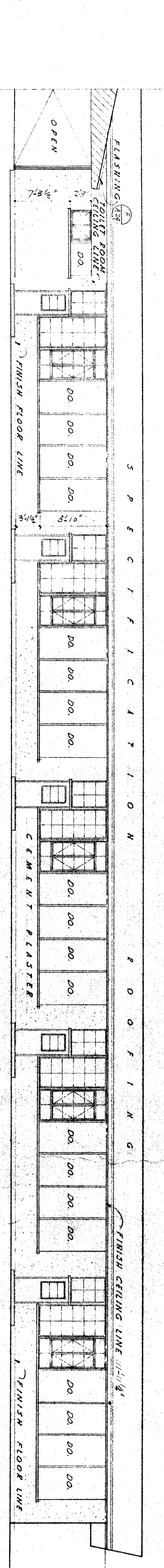
WEST ELEVATION - UNIT - E -



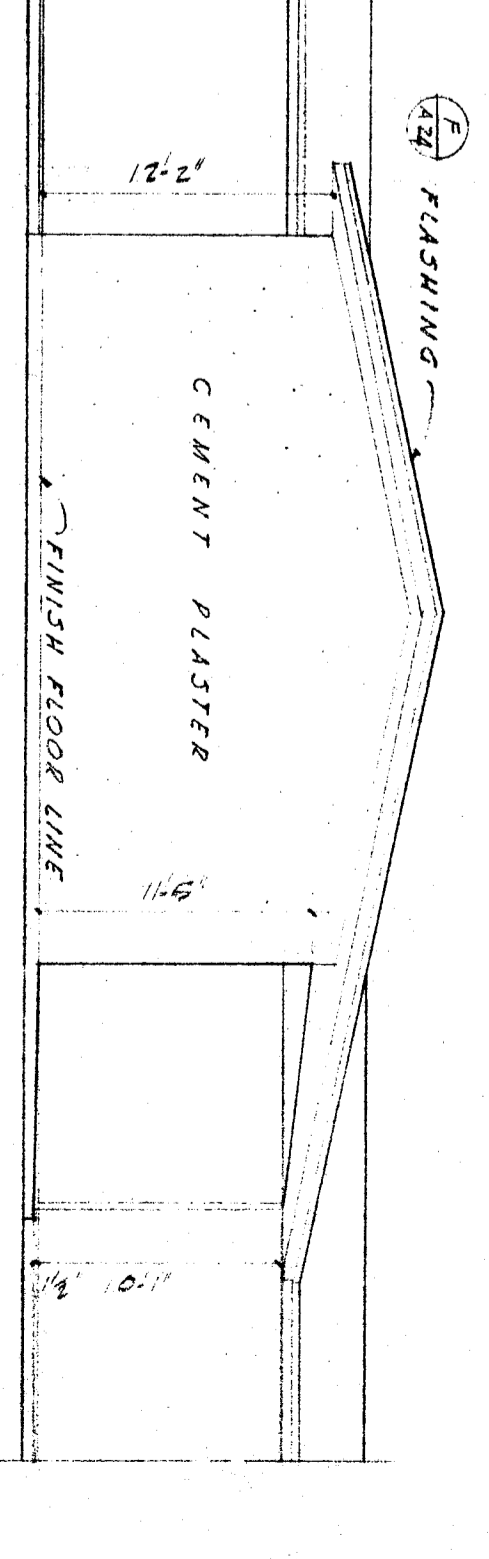
SOUTH ELEVATION - UNIT - F -



EAST ELEVATION - UNIT - F -



NORTH ELEVATION - UNIT - F -



WEST ELEVATION - UNIT - F -

<p>ORDER AND VERIFY ALL DIMENSIONS BEFORE PROCEEDING WITH THE WORK. REPORT ANY DISCREPANCIES TO ARCHITECT.</p>	
<p>COUNTY OF KERN OFFICE OF SUPERINTENDENT OF SCHOOLS JESSE D. STOCKTON SUPERINTENDENT</p>	<p>STATE OF CALIFORNIA DEPARTMENT OF PUBLIC WORKS DIVISION OF ARCHITECTURE OF ARCHITECTURE</p>
<p>APPROVED DATE</p>	<p>APPROVED DATE</p>
<p>STATE OF CALIFORNIA DEPARTMENT OF PUBLIC WORKS DIVISION OF ARCHITECTURE SUPERINTENDENT</p>	<p>STATE OF CALIFORNIA DEPARTMENT OF PUBLIC WORKS DIVISION OF ARCHITECTURE SUPERINTENDENT</p>
<p>BAKERSFIELD CITY SCHOOLS 1000 KST BAKERSFIELD CALIFORNIA BOARD OF EDUCATION</p>	<p>JUNIOR HIGH SCHOOL BAKERSFIELD CITY SCHOOL DISTRICT BAKERSFIELD CALIFORNIA</p>
<p>ERNEST L. MCCOY - ARCHITECT 1612 - 19th ST CALIFORNIA</p>	<p>ERNEST L. MCCOY - ARCHITECT 1612 - 19th ST CALIFORNIA</p>
<p>3/7/57</p>	<p>3/7/57</p>