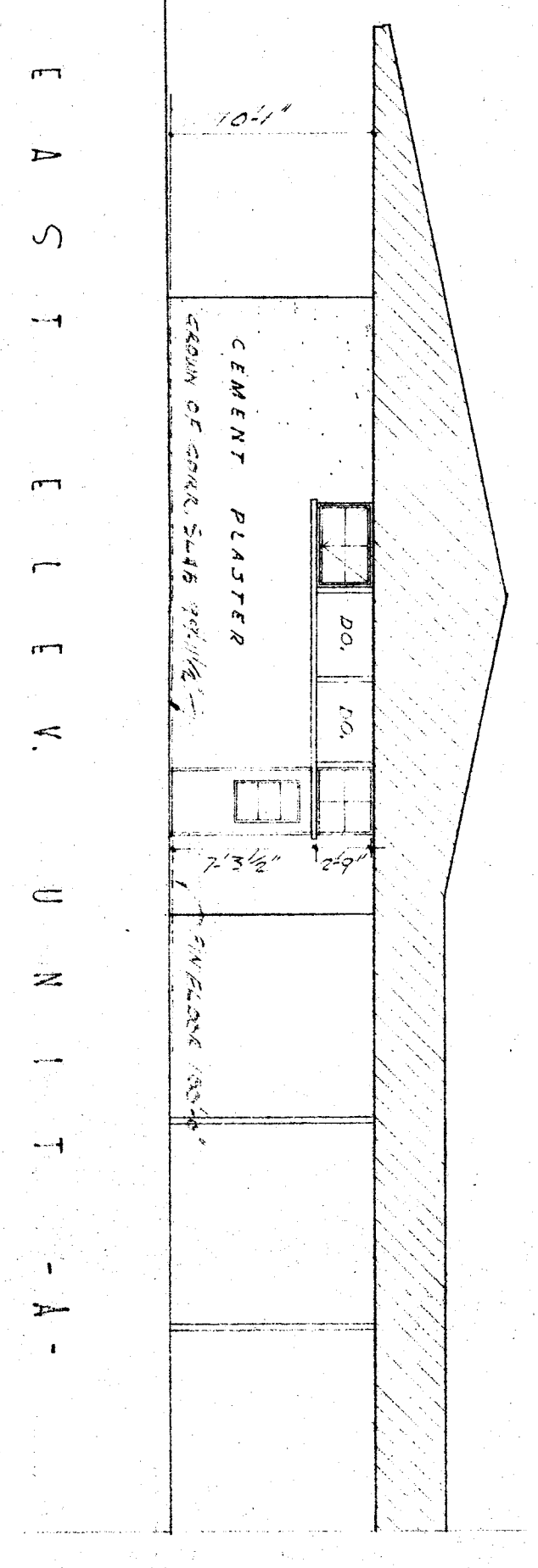
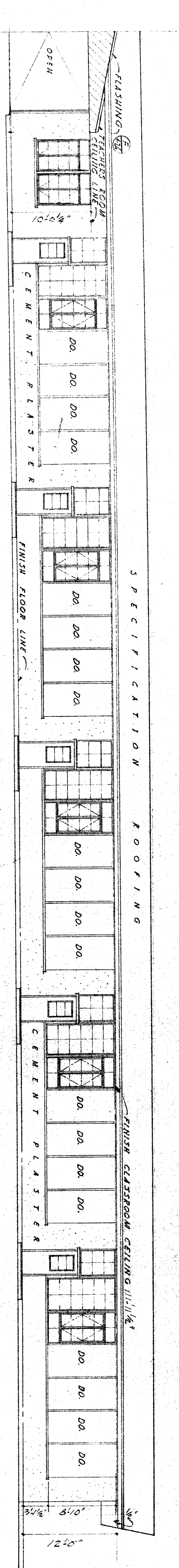


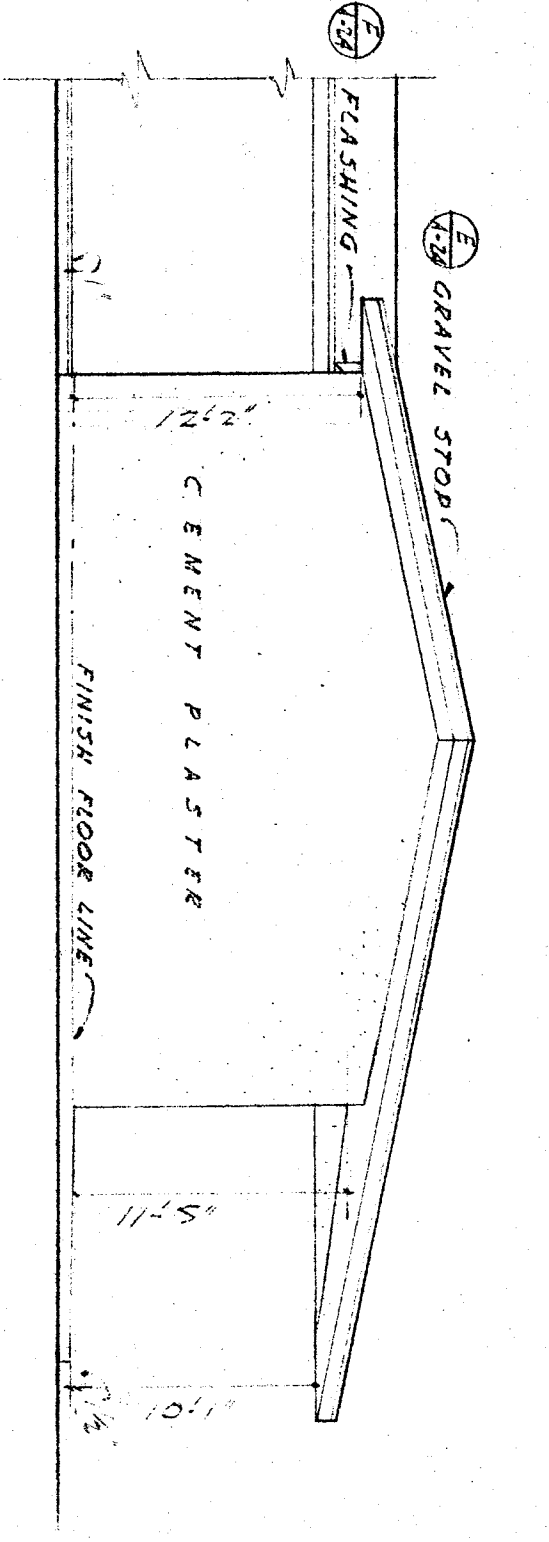
SOUTH ELEVATION - UNIT - A -



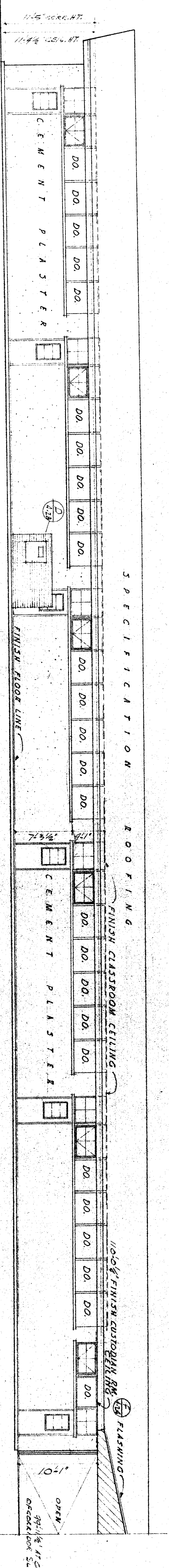
EAST ELEVATION - UNIT - A -



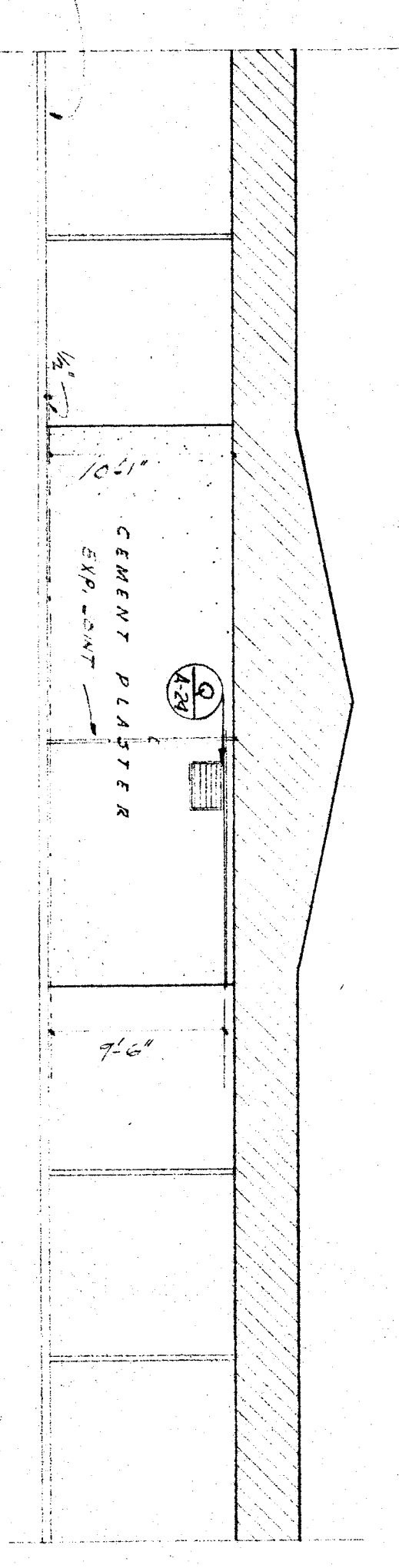
NORTH ELEVATION - UNIT - A -



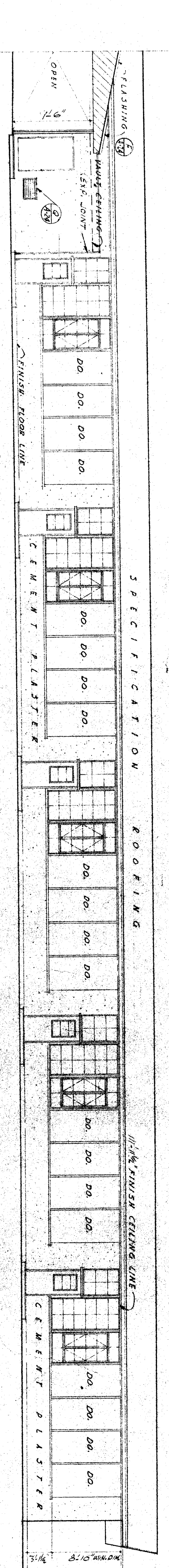
WEST ELEVATION - UNIT - A -



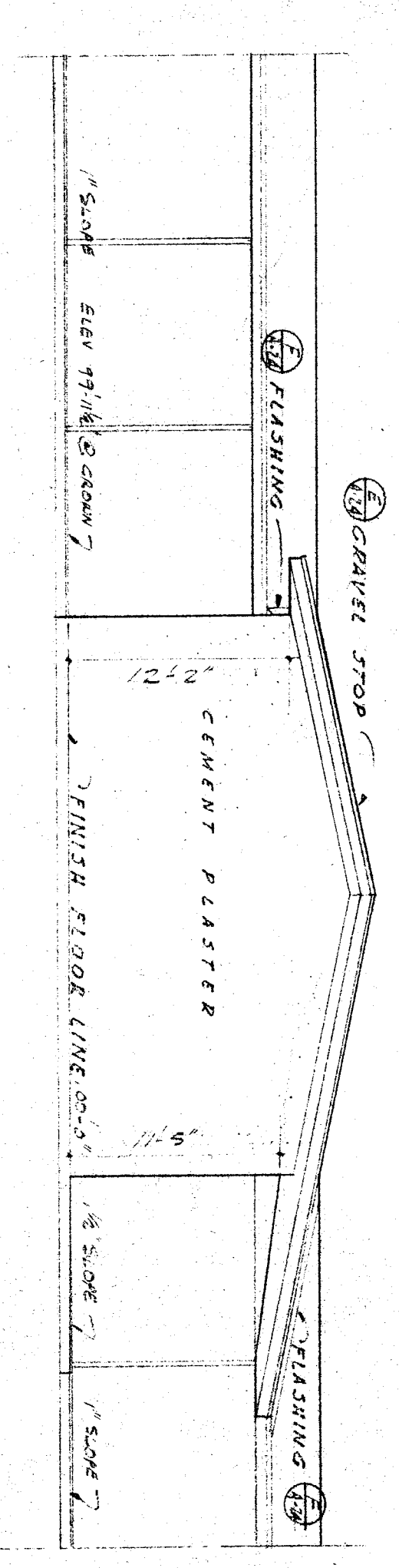
SOUTH ELEVATION - UNIT - B -



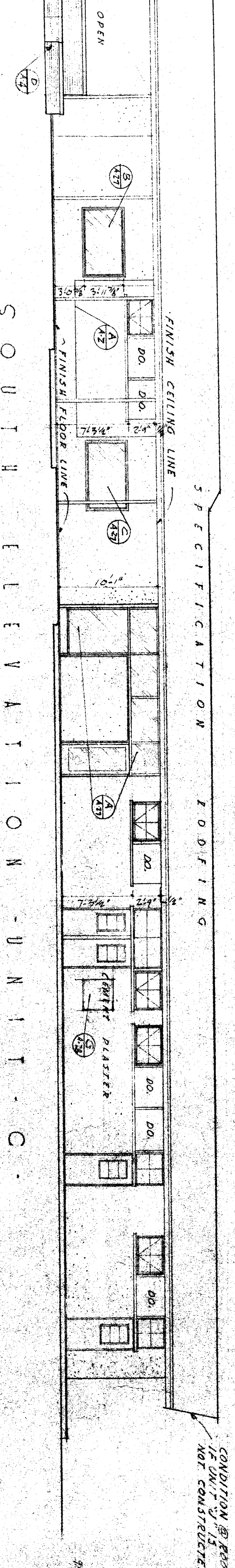
EAST ELEVATION - UNIT - B -



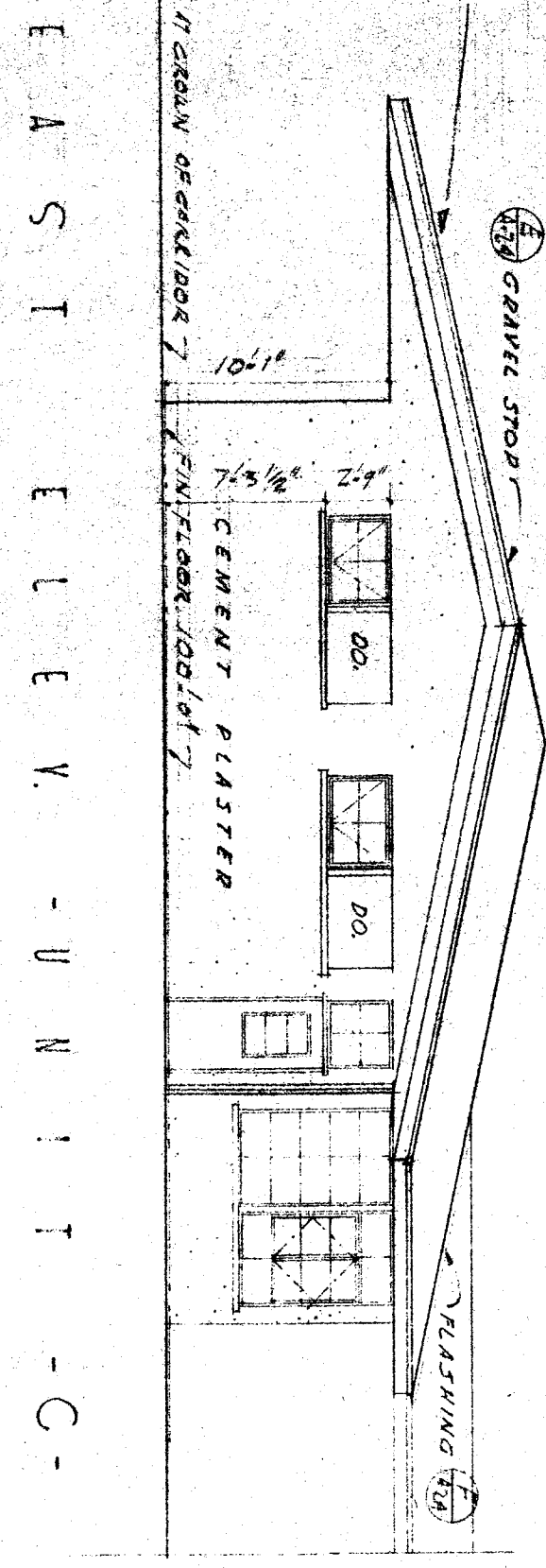
NORTH ELEVATION - UNIT - B -



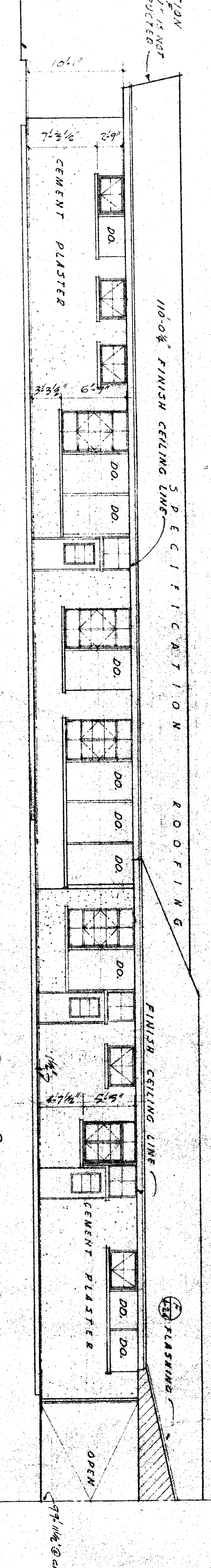
WEST ELEVATION - UNIT - B -



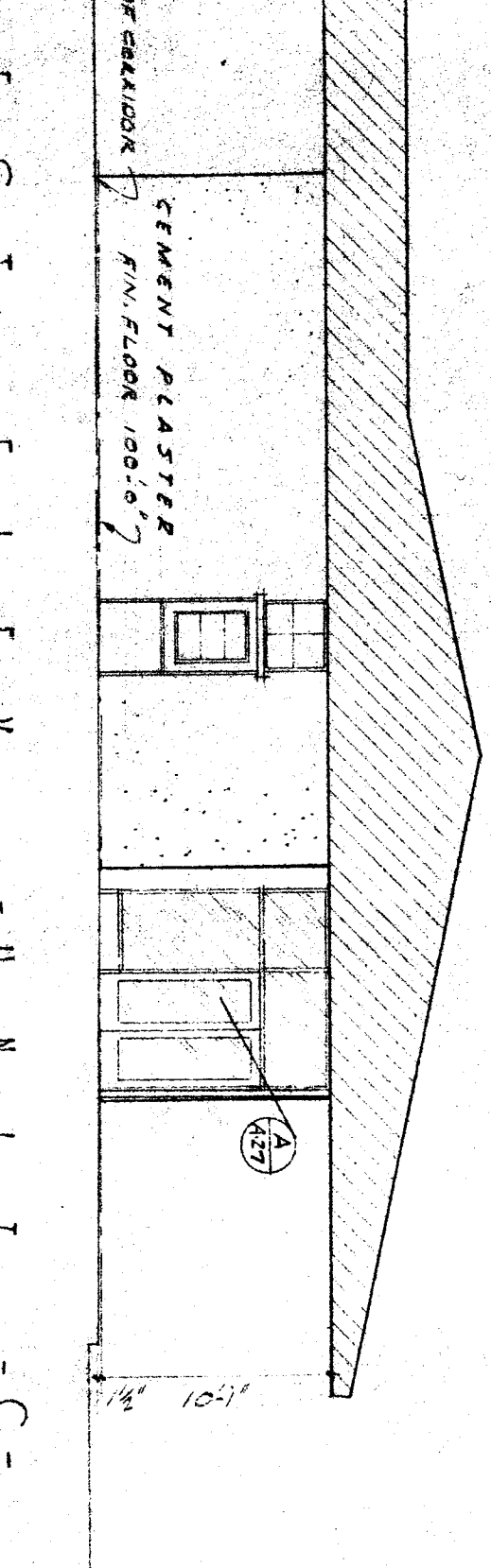
SOUTH ELEVATION - UNIT - C -



EAST ELEVATION - UNIT - C -



NORTH ELEVATION - UNIT - C -



WEST ELEVATION - UNIT - C -

BAKERSFIELD CITY SCHOOLS  
 1600 ST. BAKERSFIELD CALIFORNIA  
 BOARD OF EDUCATION  
 PRELIMINARY APPROVAL  
 DATE 3/15/25

CHECK AND VERIFY ALL DIMENSIONS BEFORE PROCEEDING WITH THE WORK. REPORT ANY DISCREPANCIES TO ARCHITECT.  
 COUNTY OF KERN  
 OFFICE OF SUPERINTENDENT OF SCHOOLS  
 JESSE D. STOCKTON  
 SUPERINTENDENT  
 APPROVED DATE

STATE OF CALIFORNIA  
 DEPARTMENT OF PUBLIC WORKS  
 DIVISION OF ARCHITECTURE  
 ARCHITECT  
 APPROVED DATE 3/15/25

BAKERSFIELD CITY SCHOOLS  
 1600 ST. BAKERSFIELD CALIFORNIA  
 BOARD OF EDUCATION  
 APPROVED DATE 3/15/25

JUNIOR HIGH SCHOOL  
 BAKERSFIELD CITY SCHOOL DISTRICT  
 BELLE TERRACE & P STREET  
 BAKERSFIELD CALIFORNIA  
 ERNEST L. MCCOY ARCHITECT  
 1411 N. CALIFORNIA  
 BAKERSFIELD CALIFORNIA  
 DATE 3/15/25