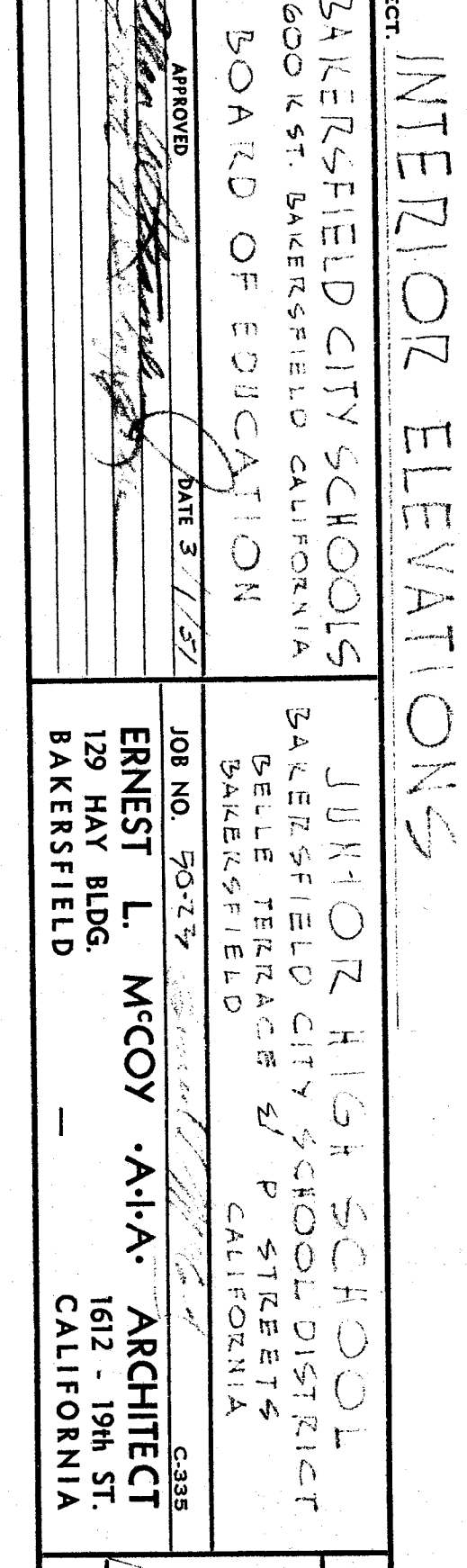
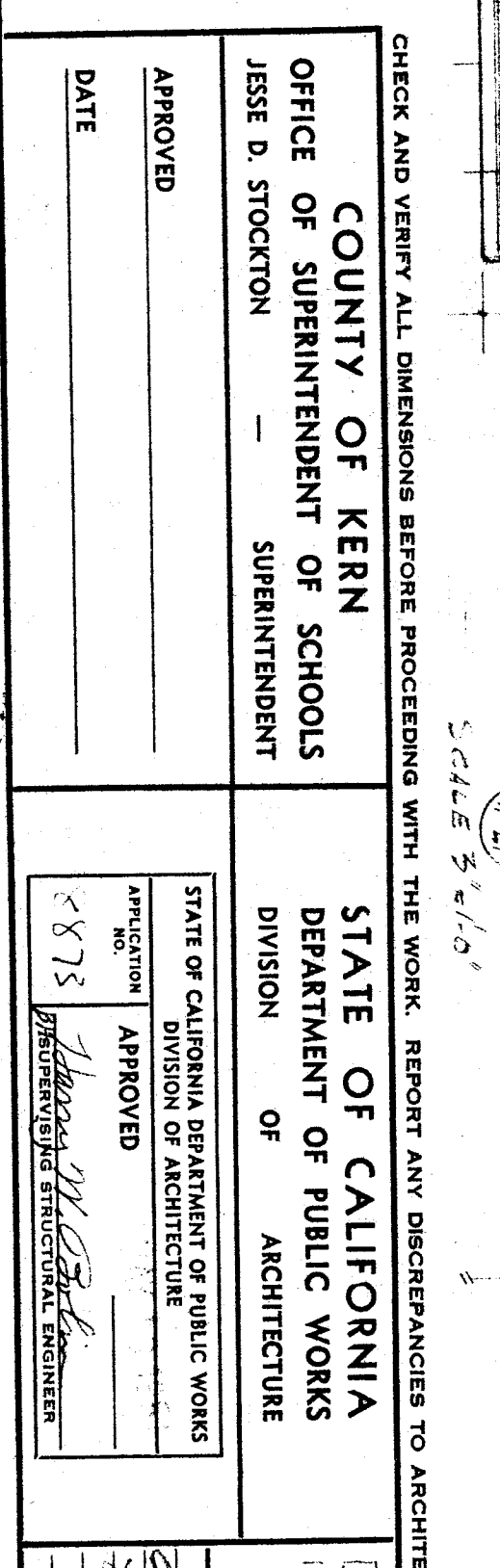
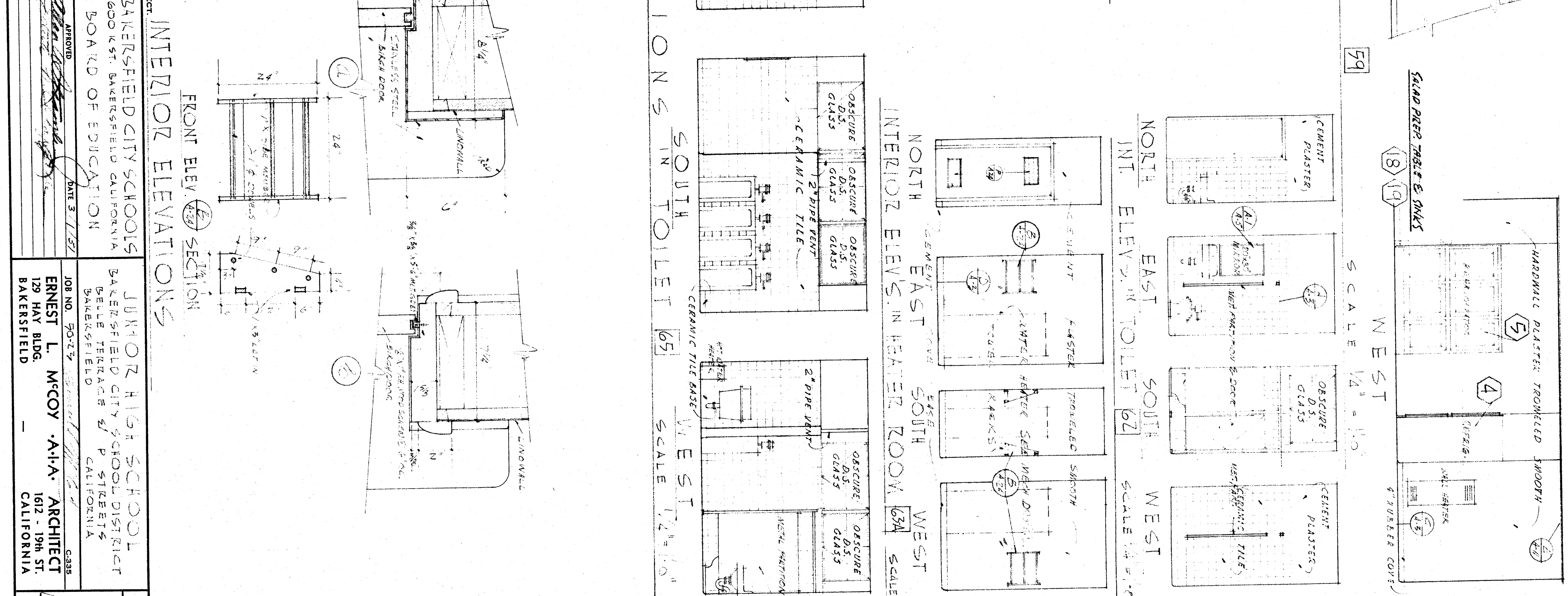
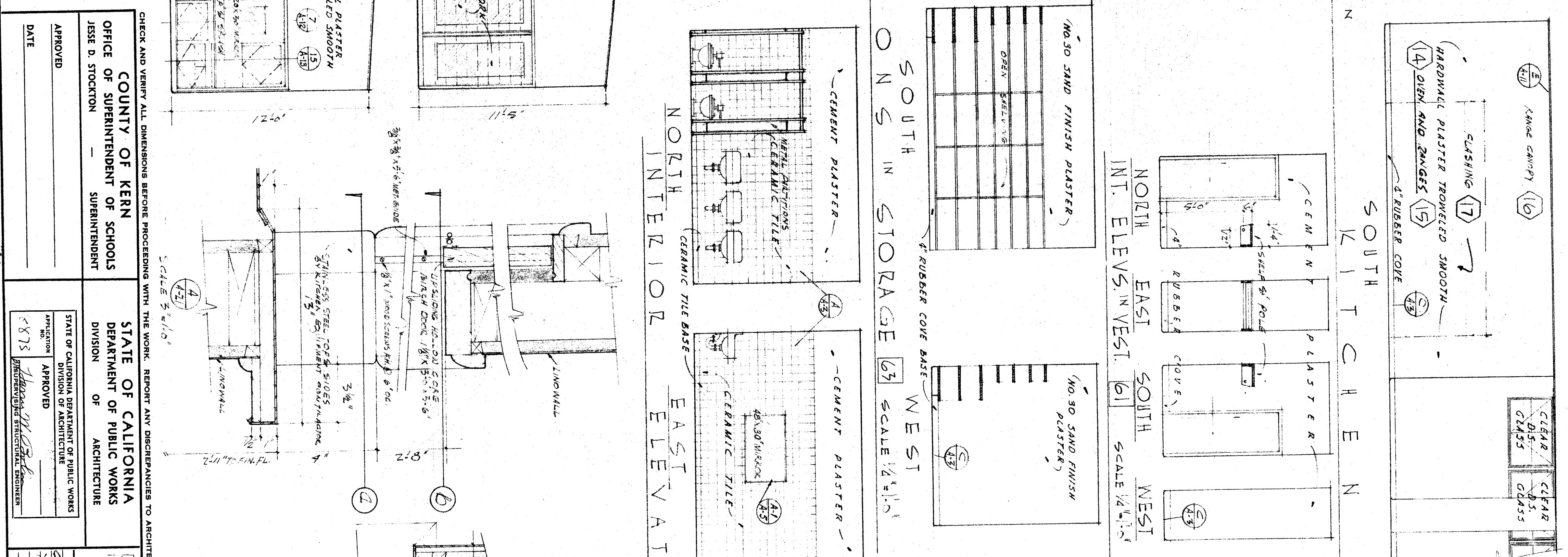
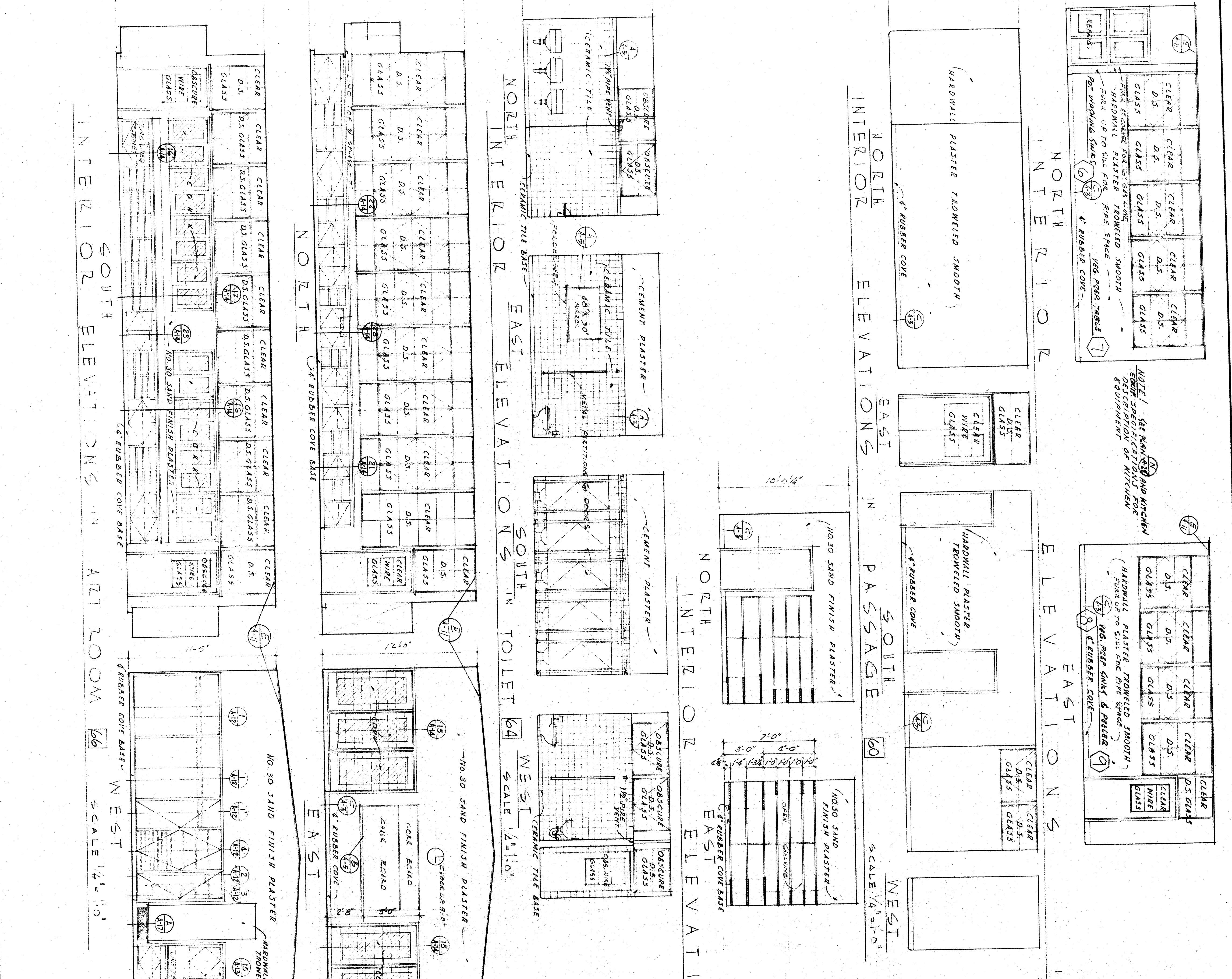
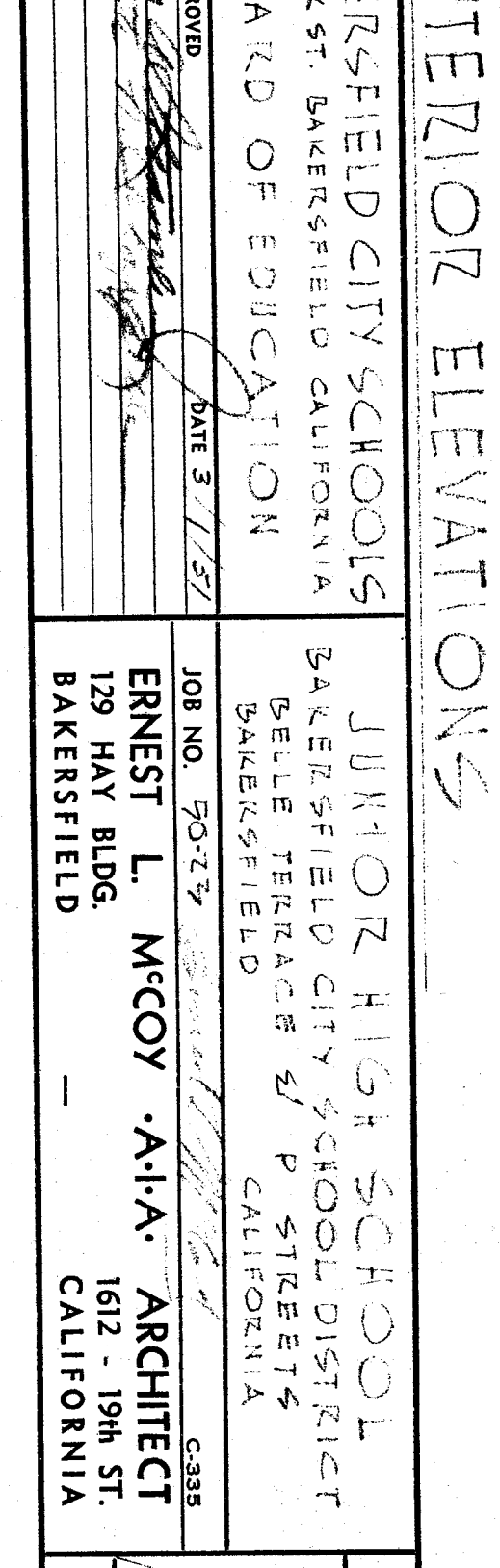
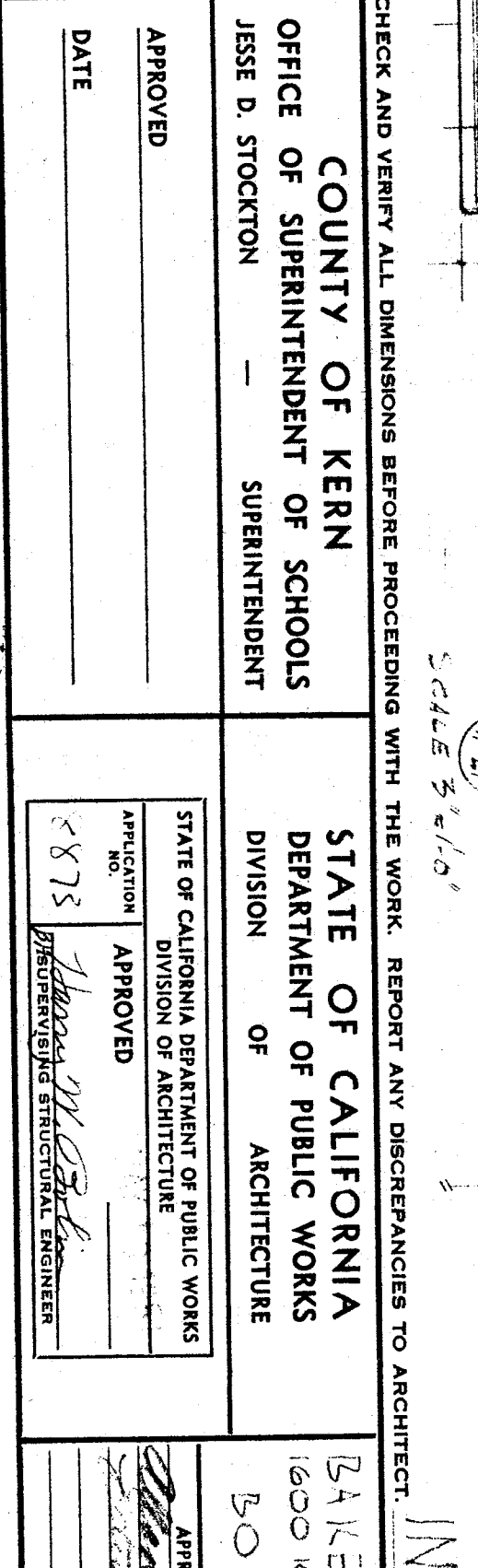
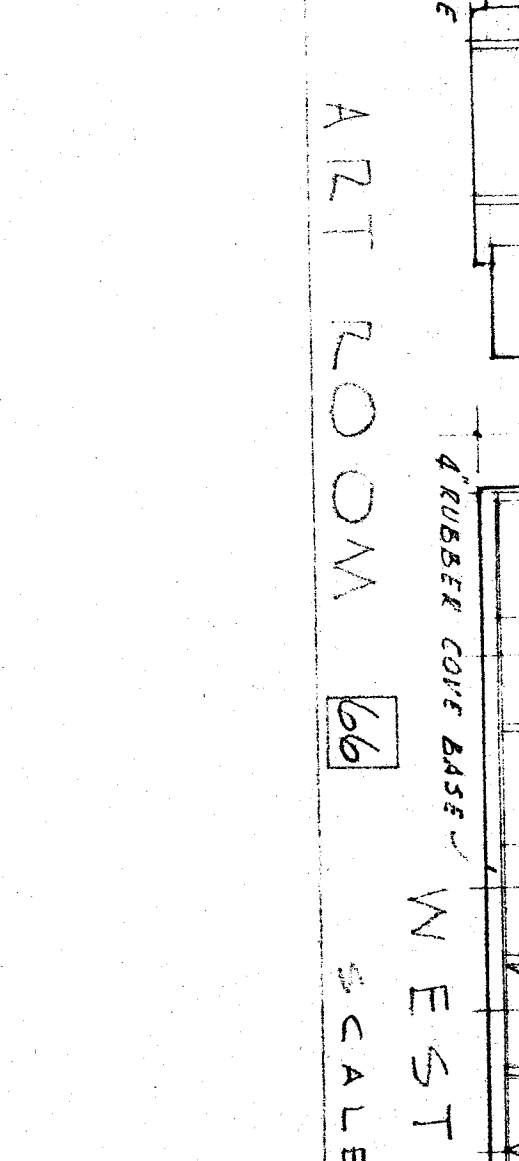
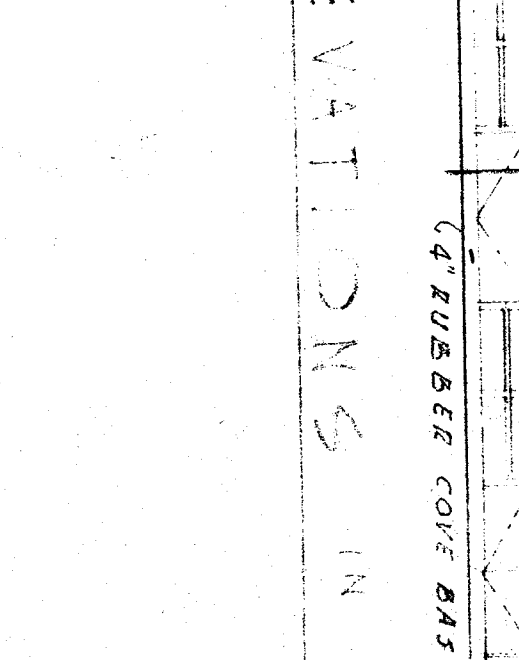
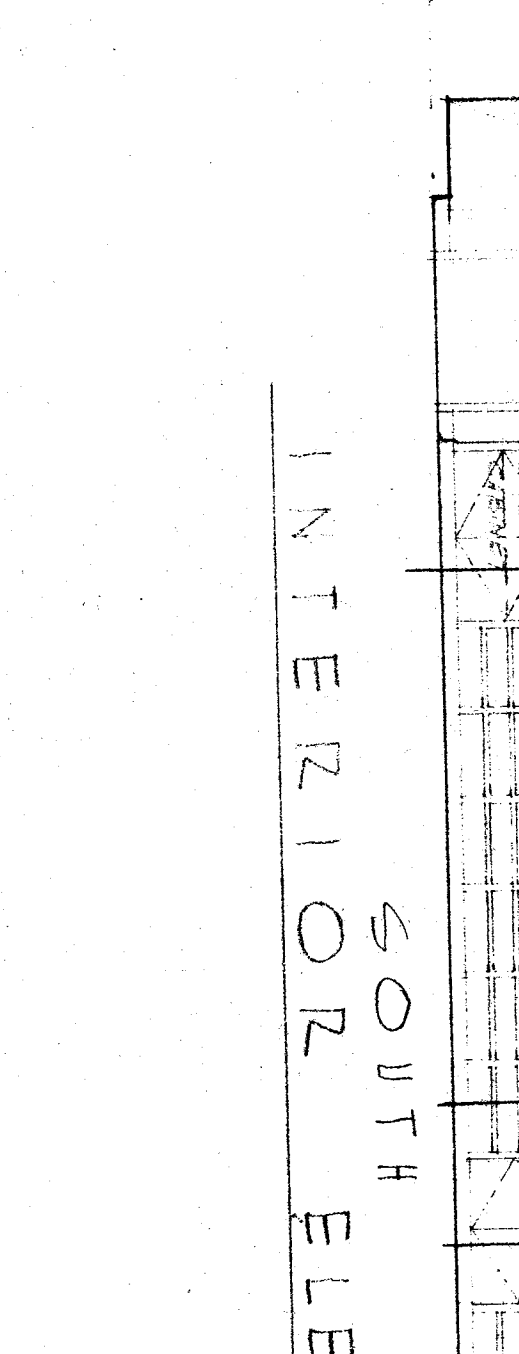
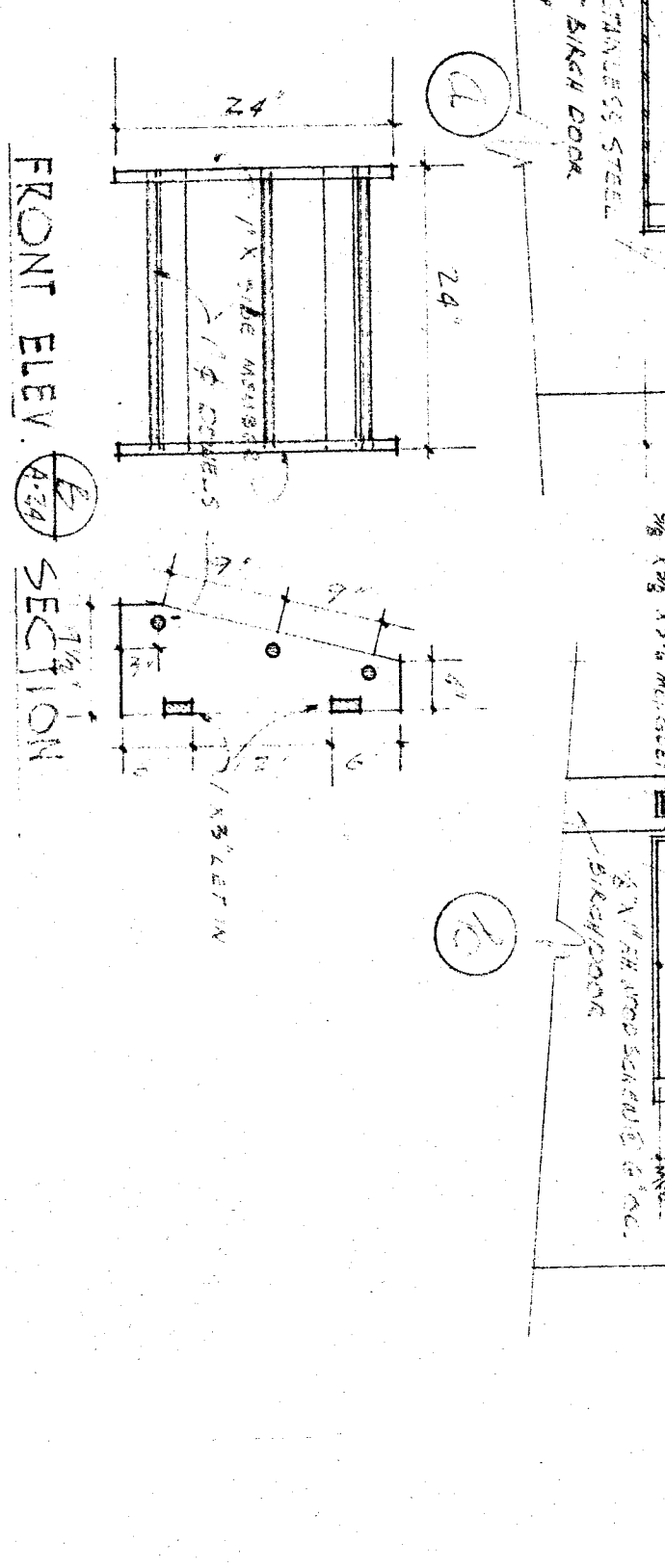
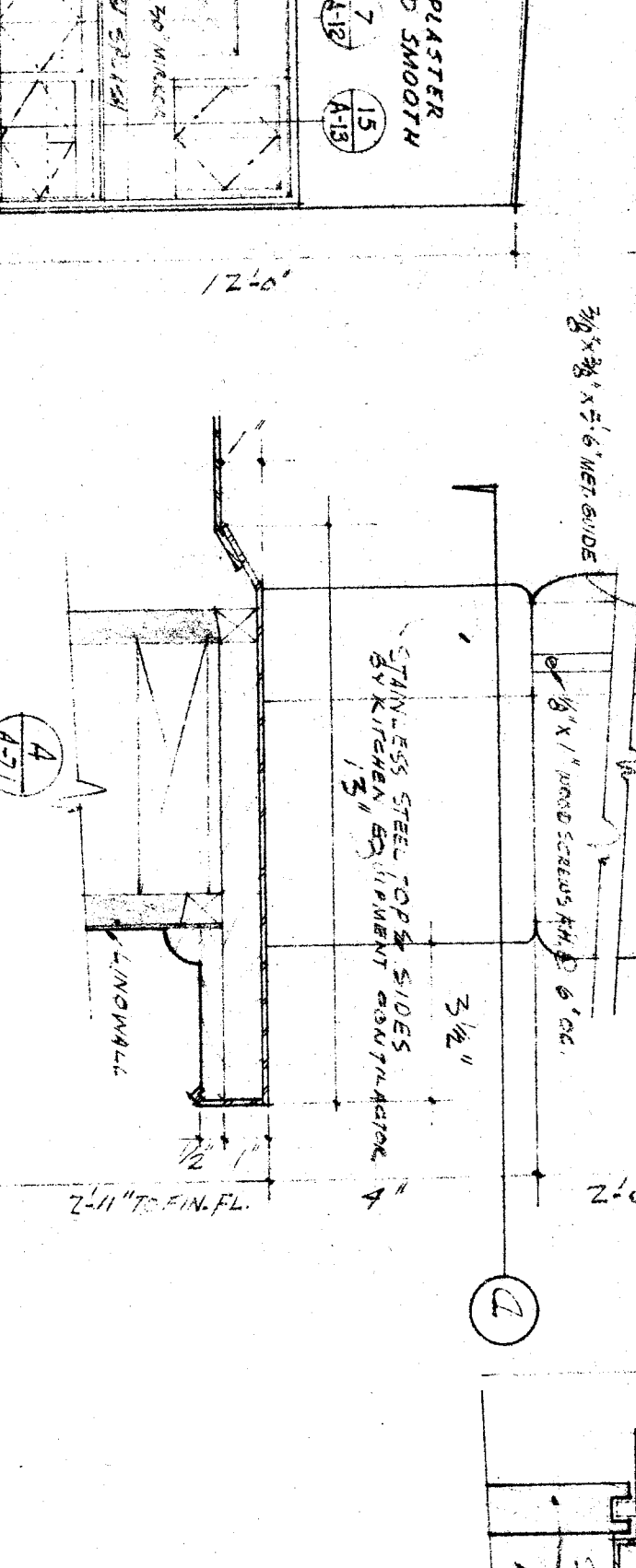
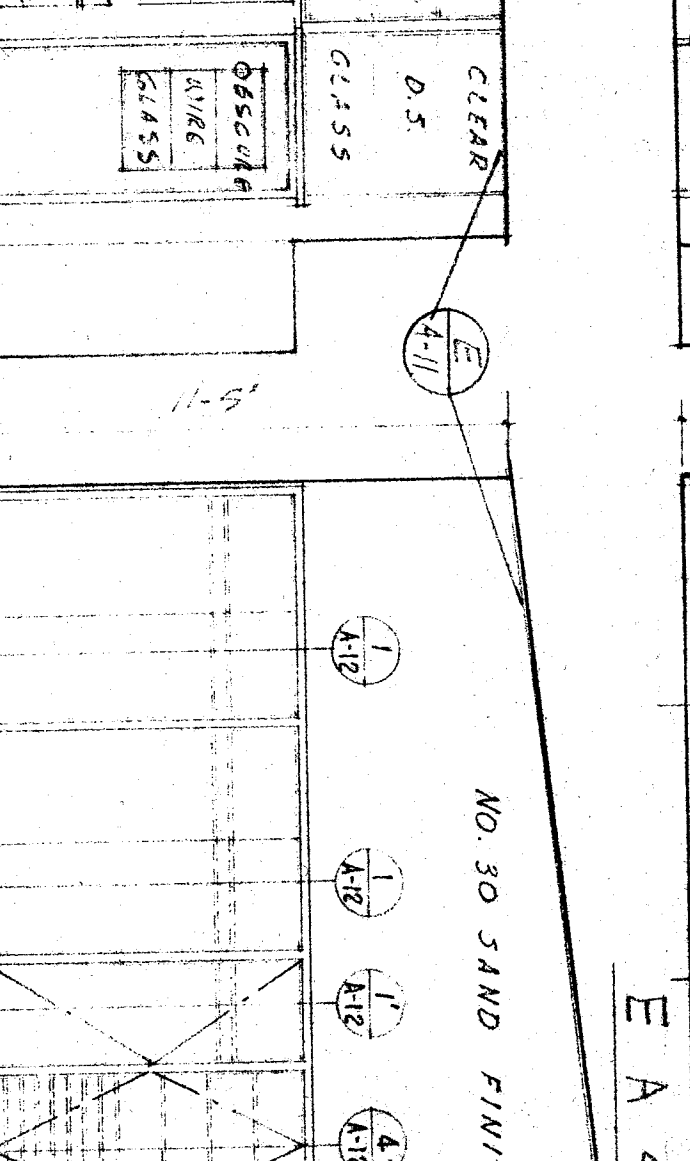
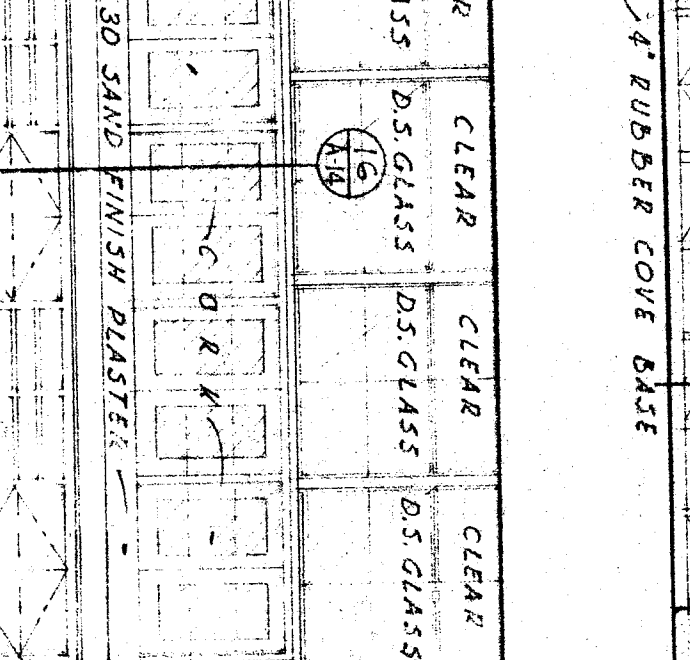
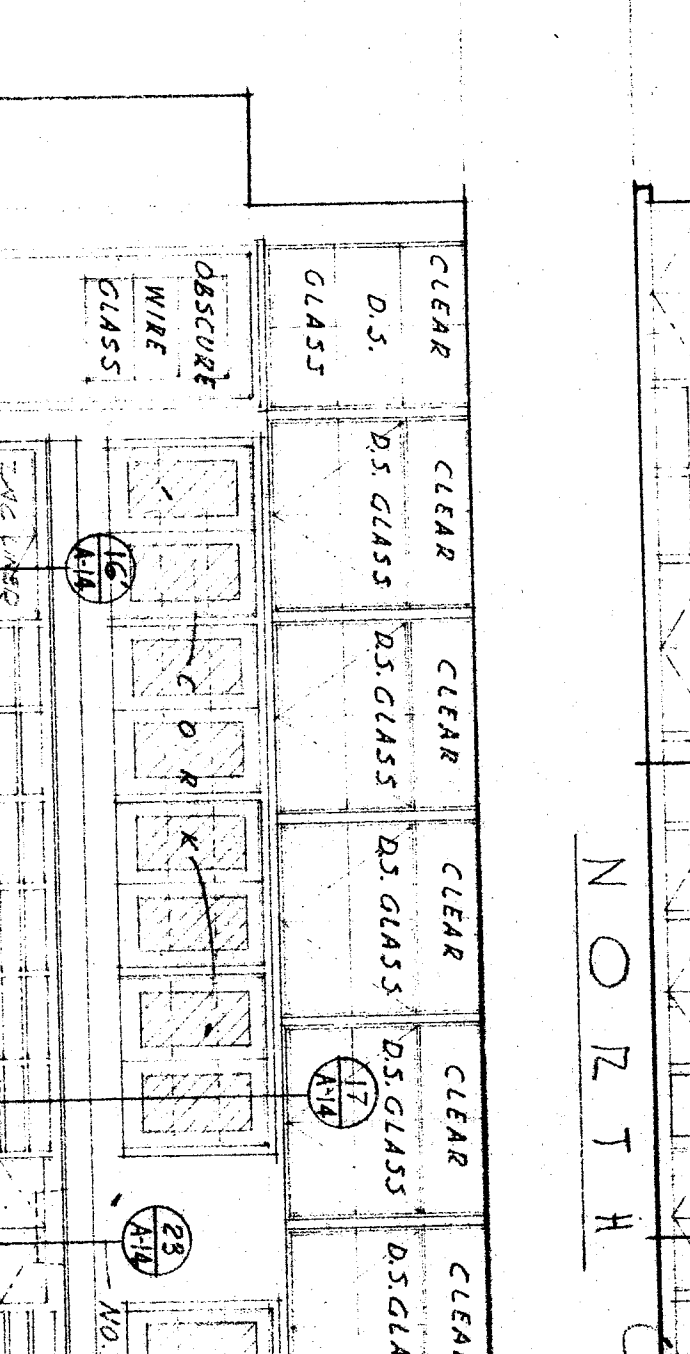
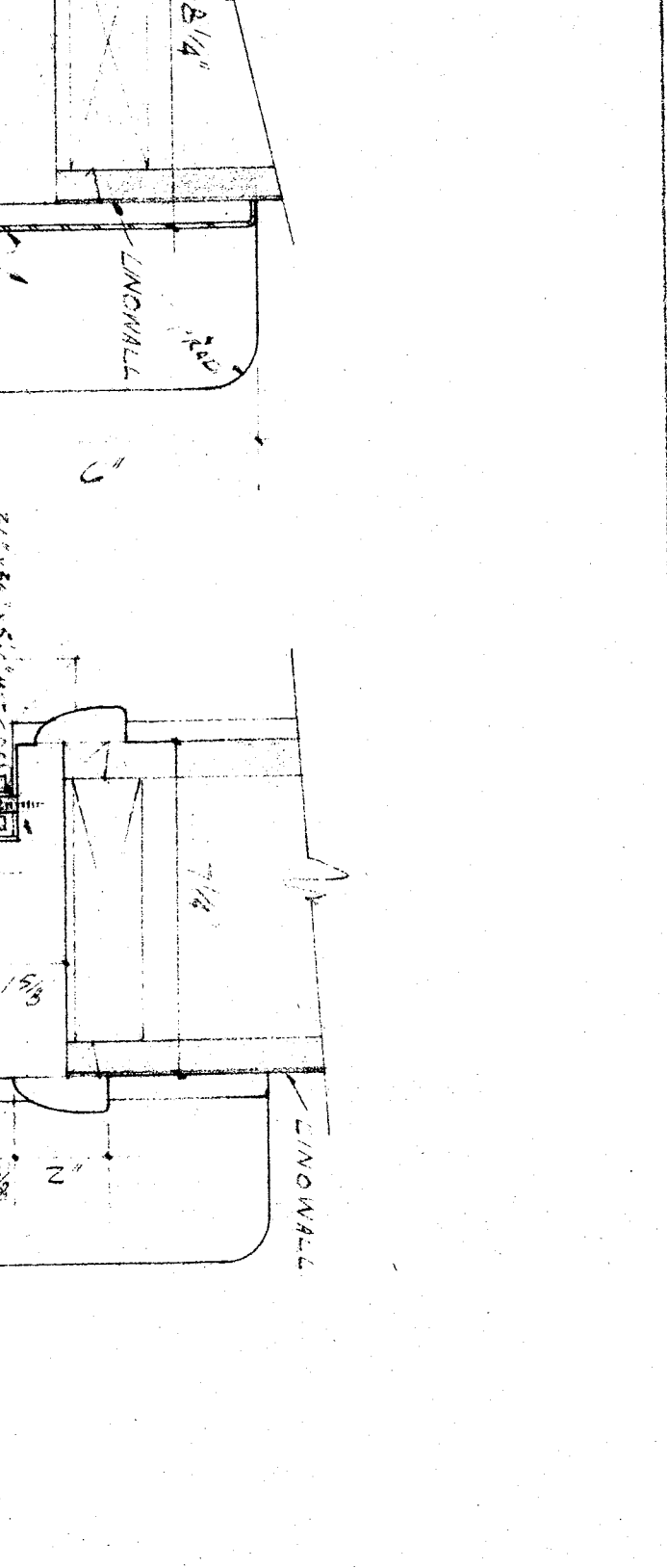
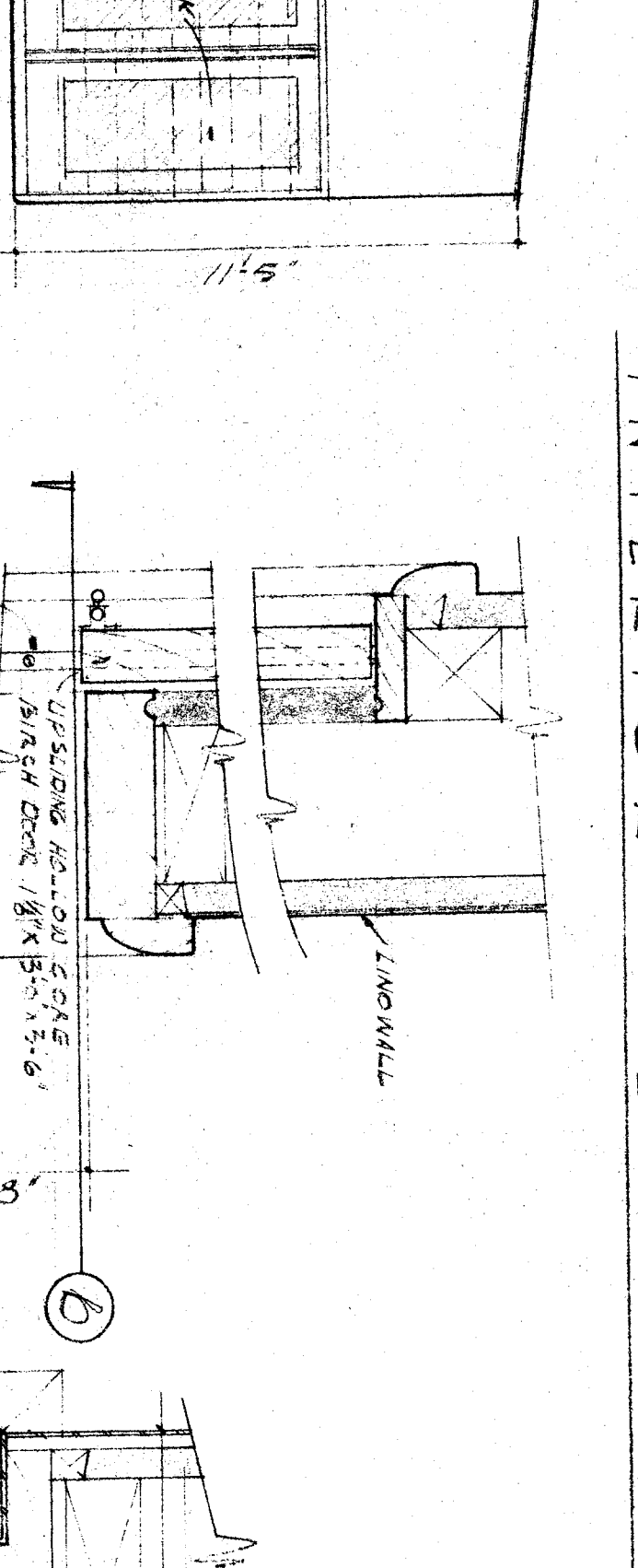
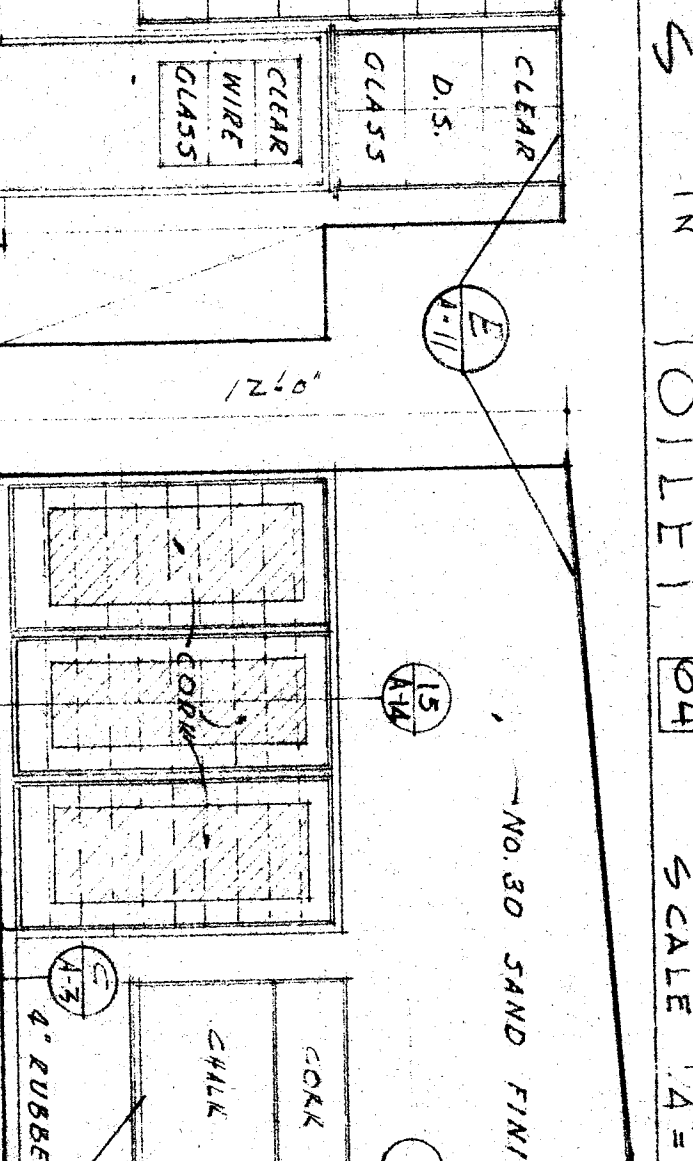
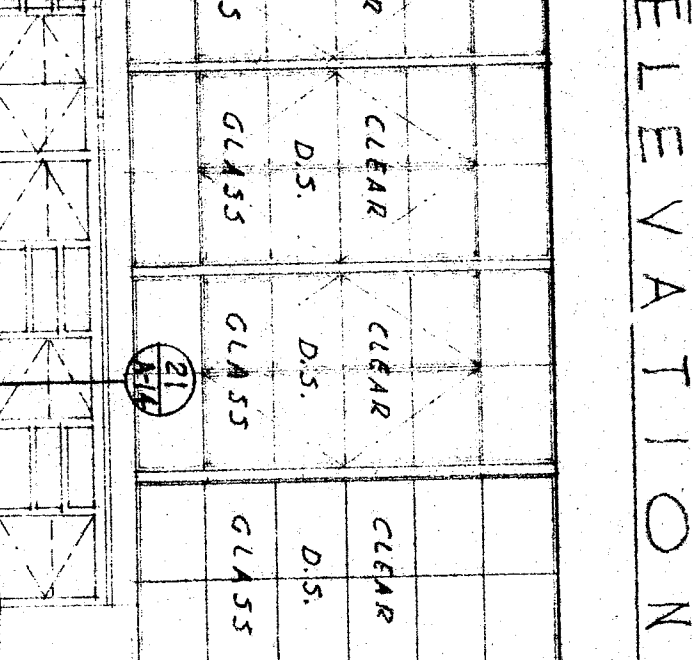
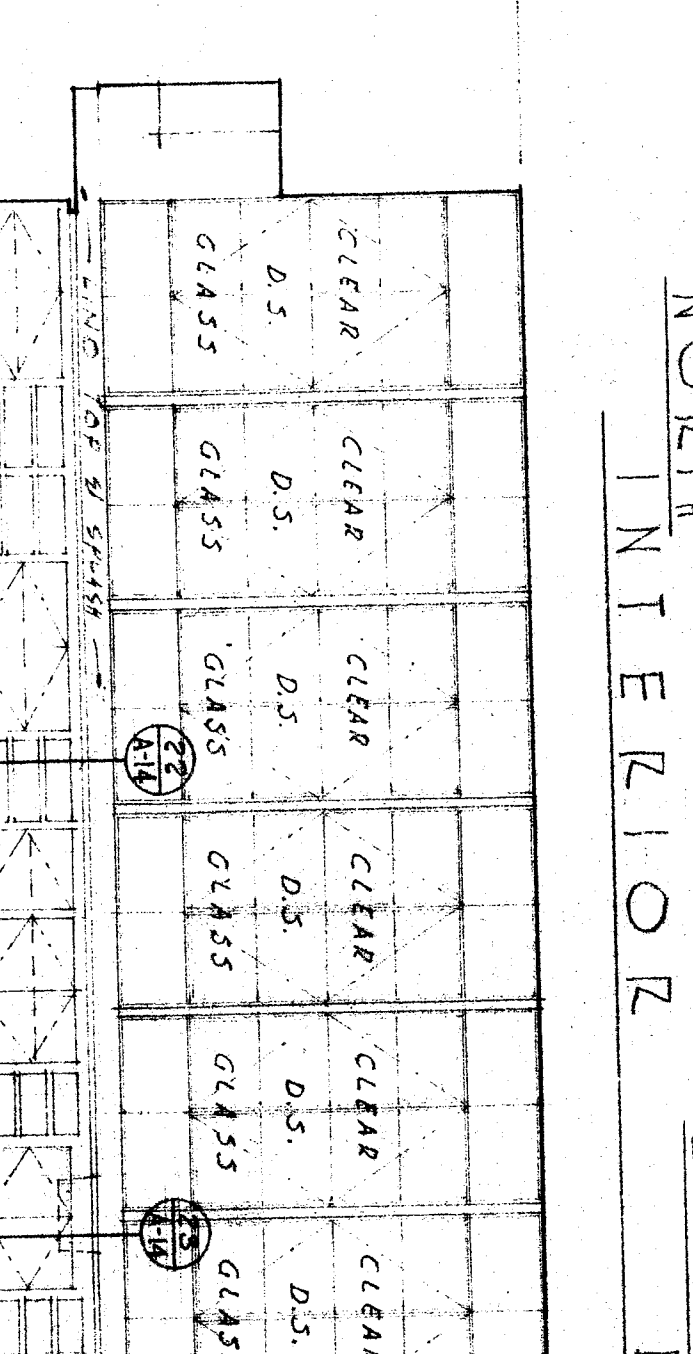
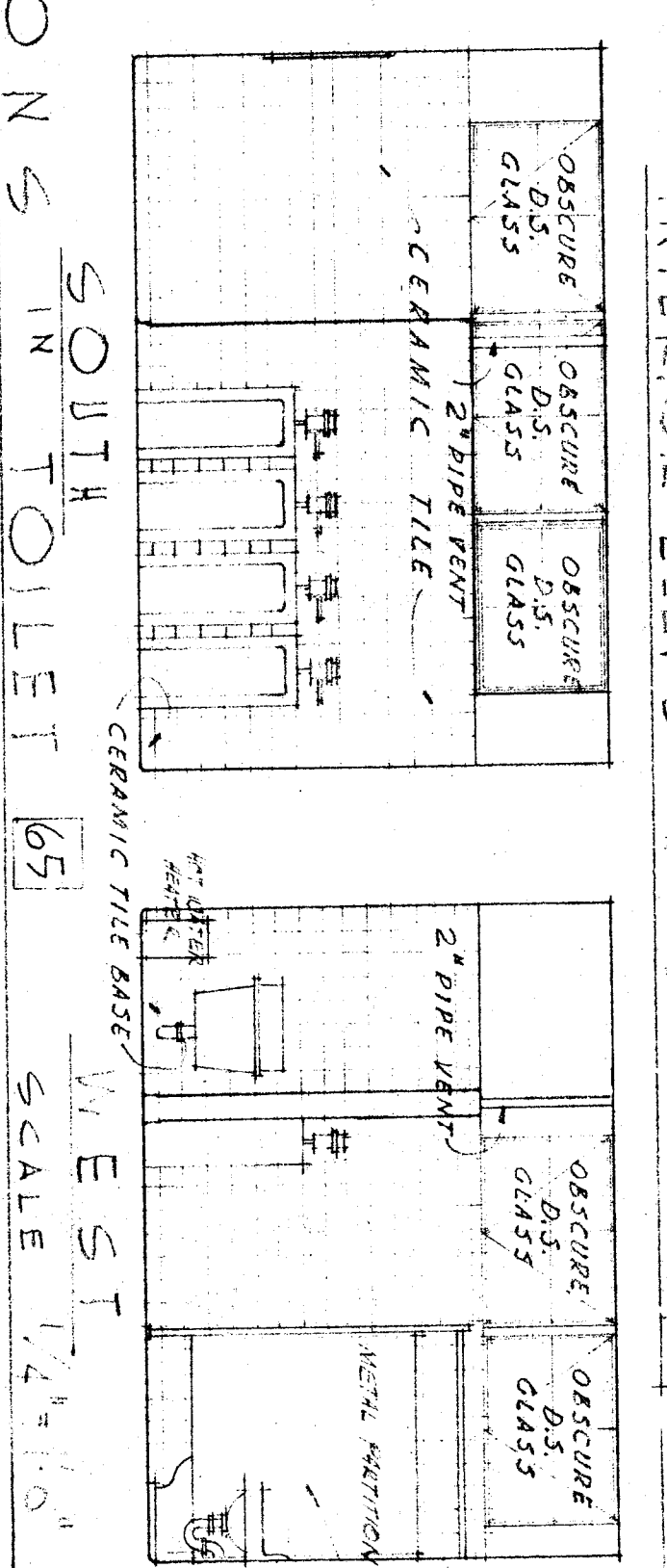
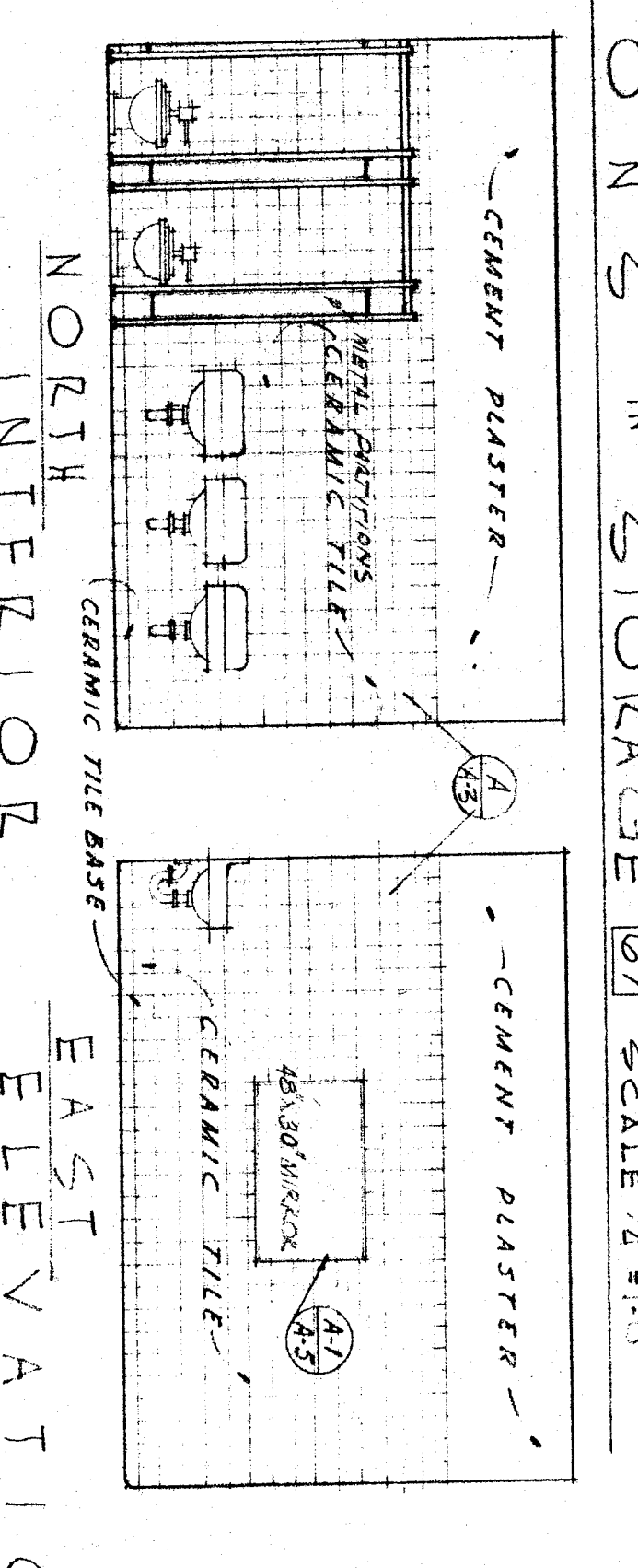
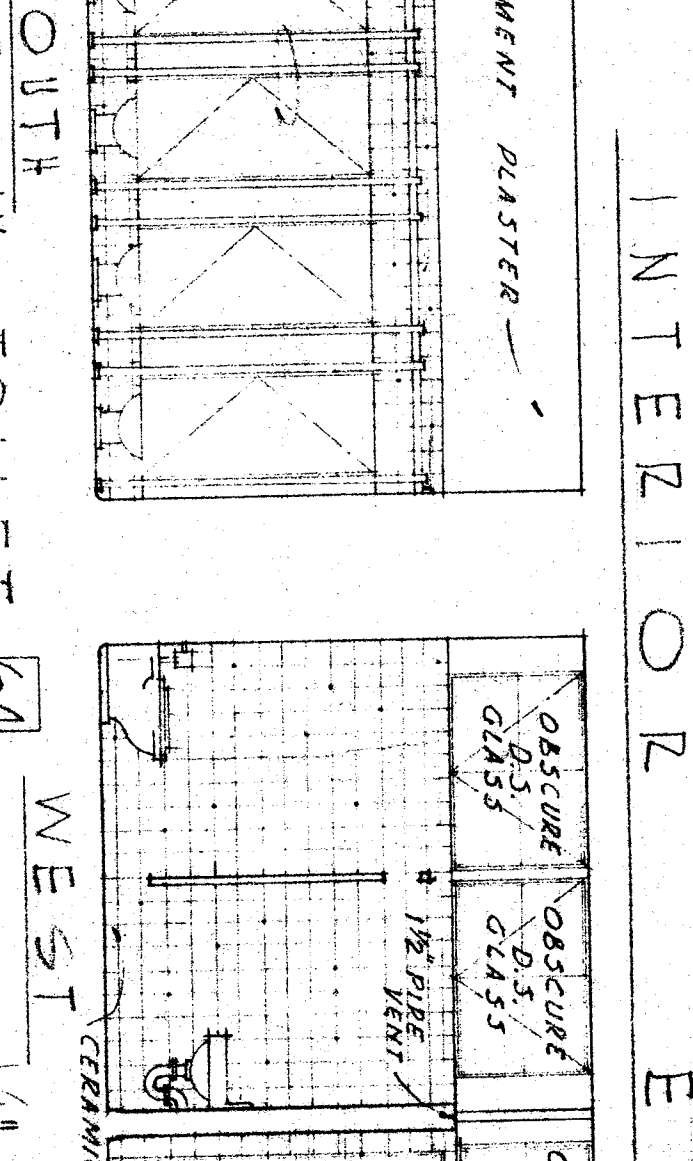
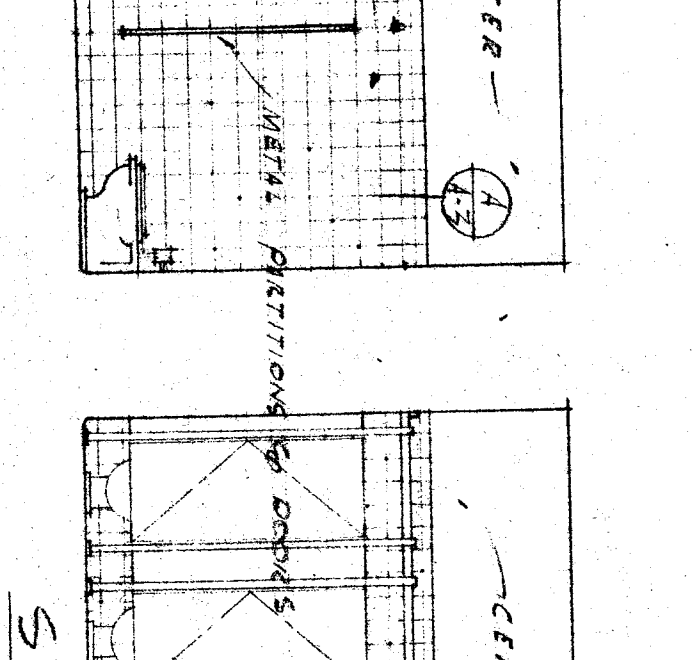
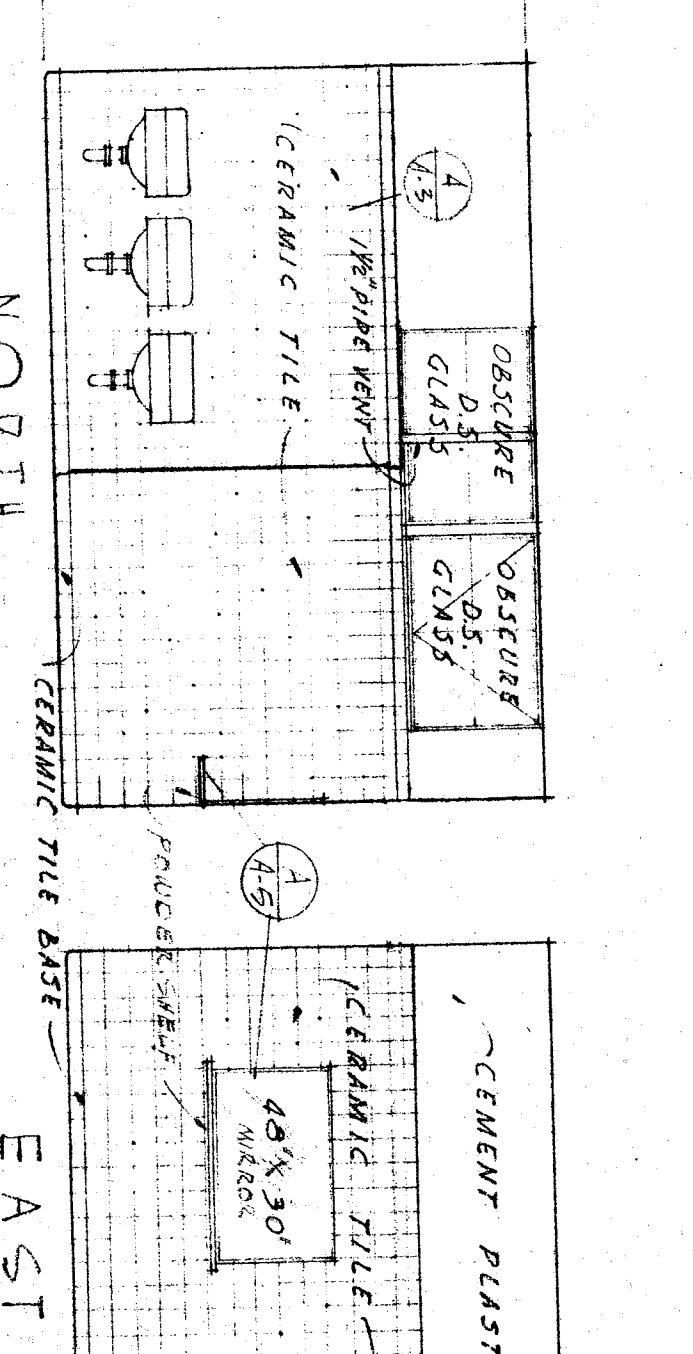
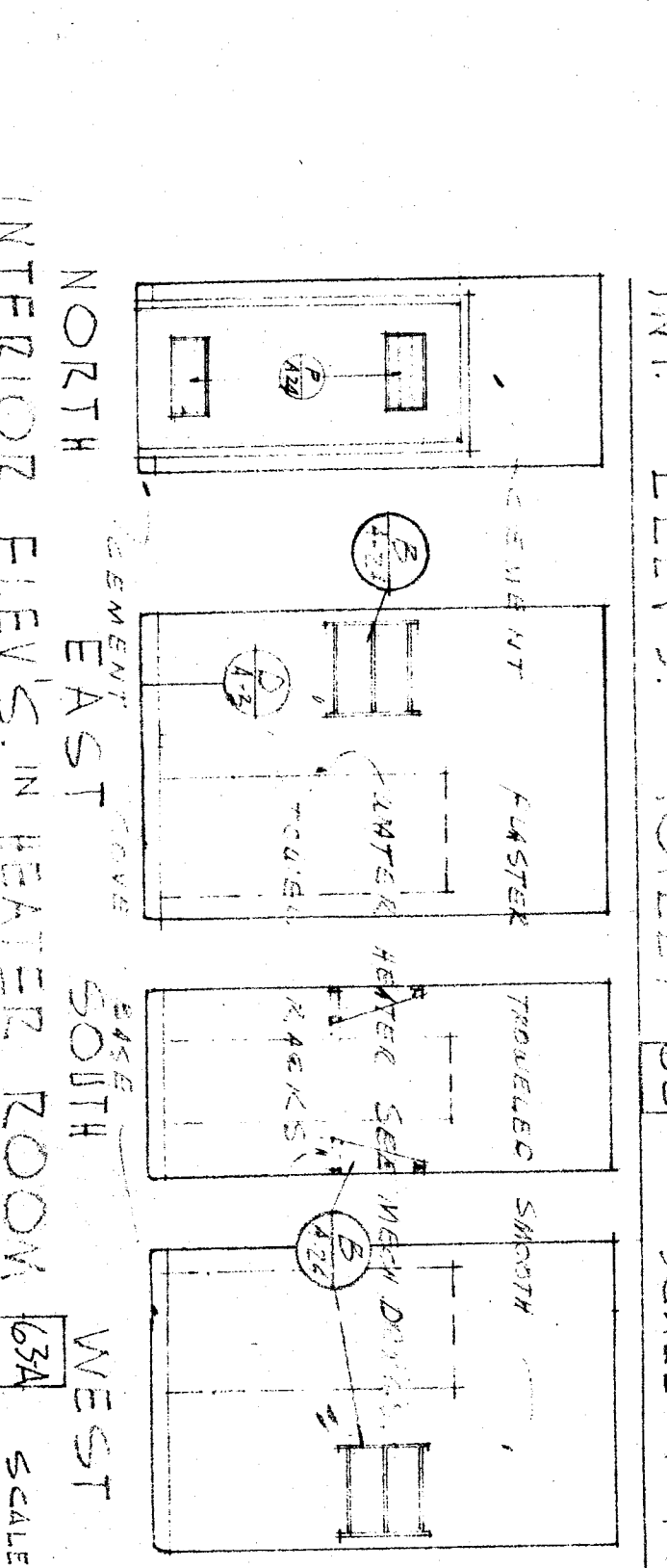
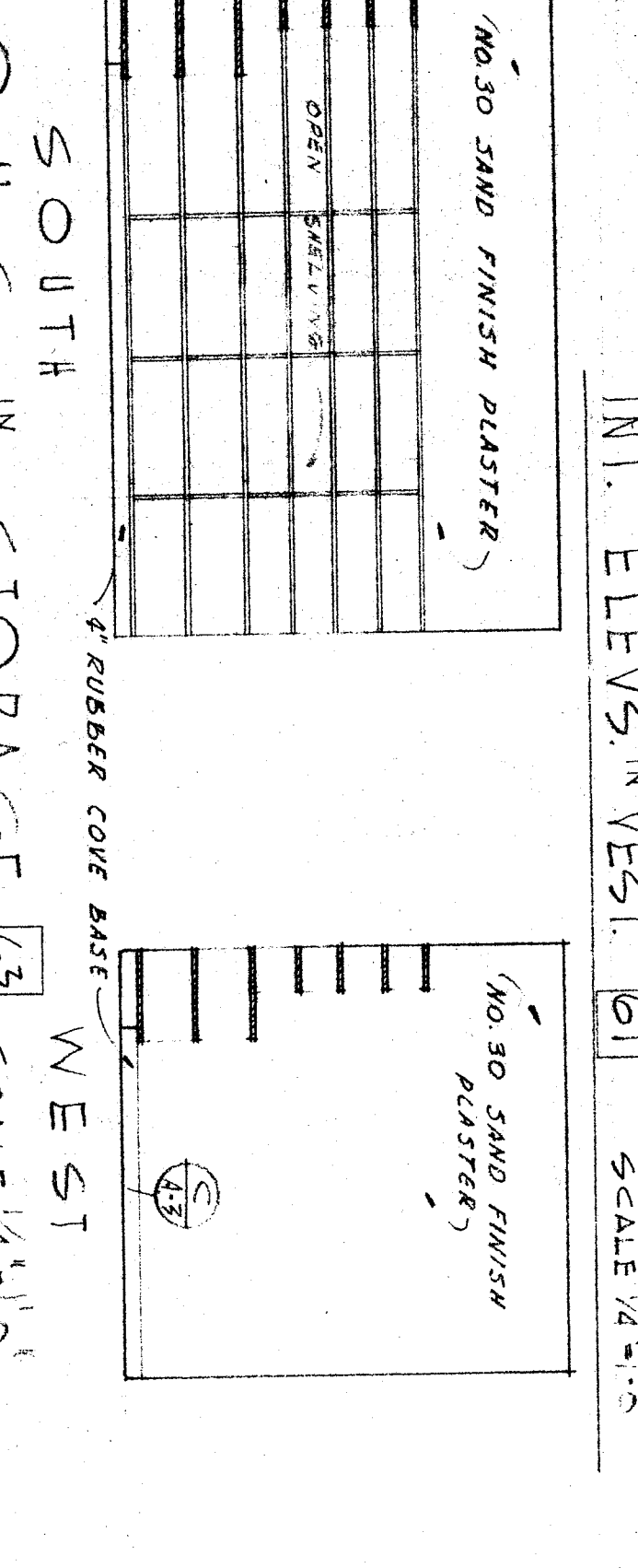
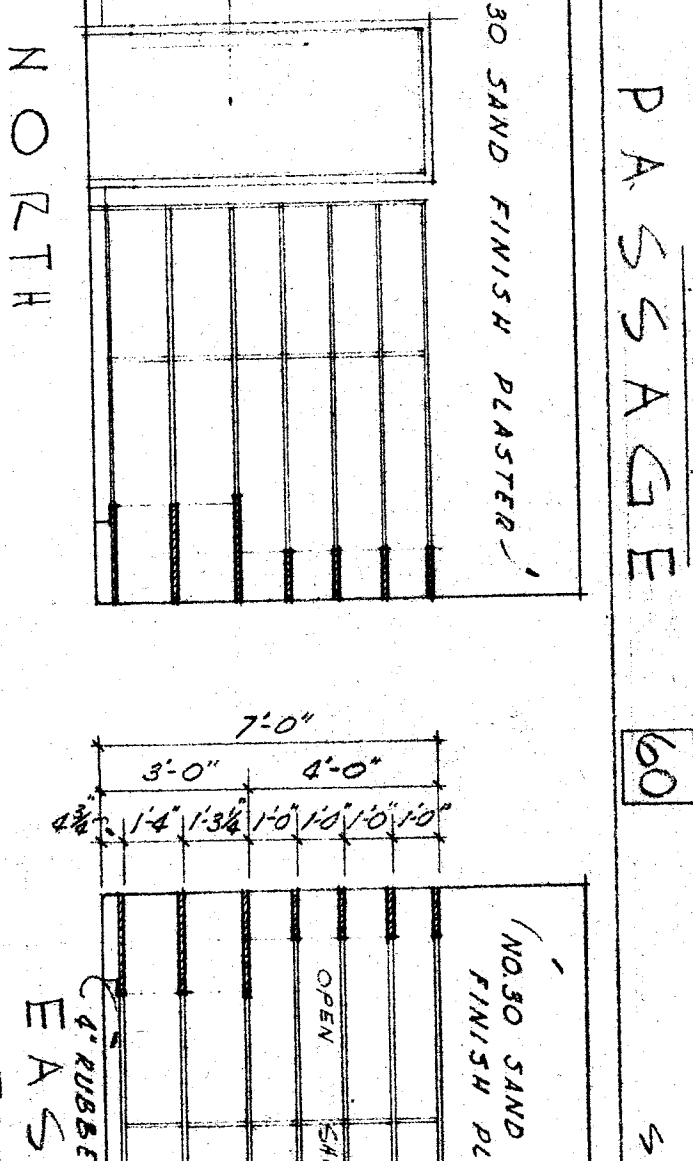
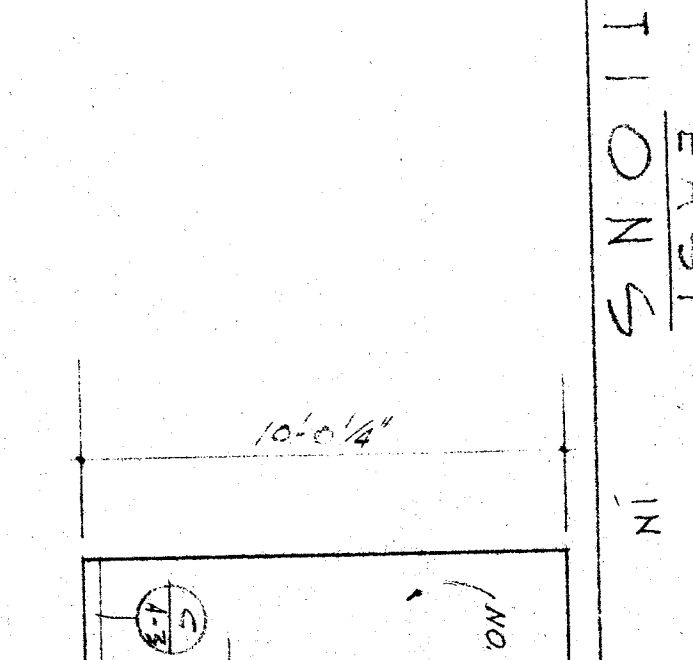
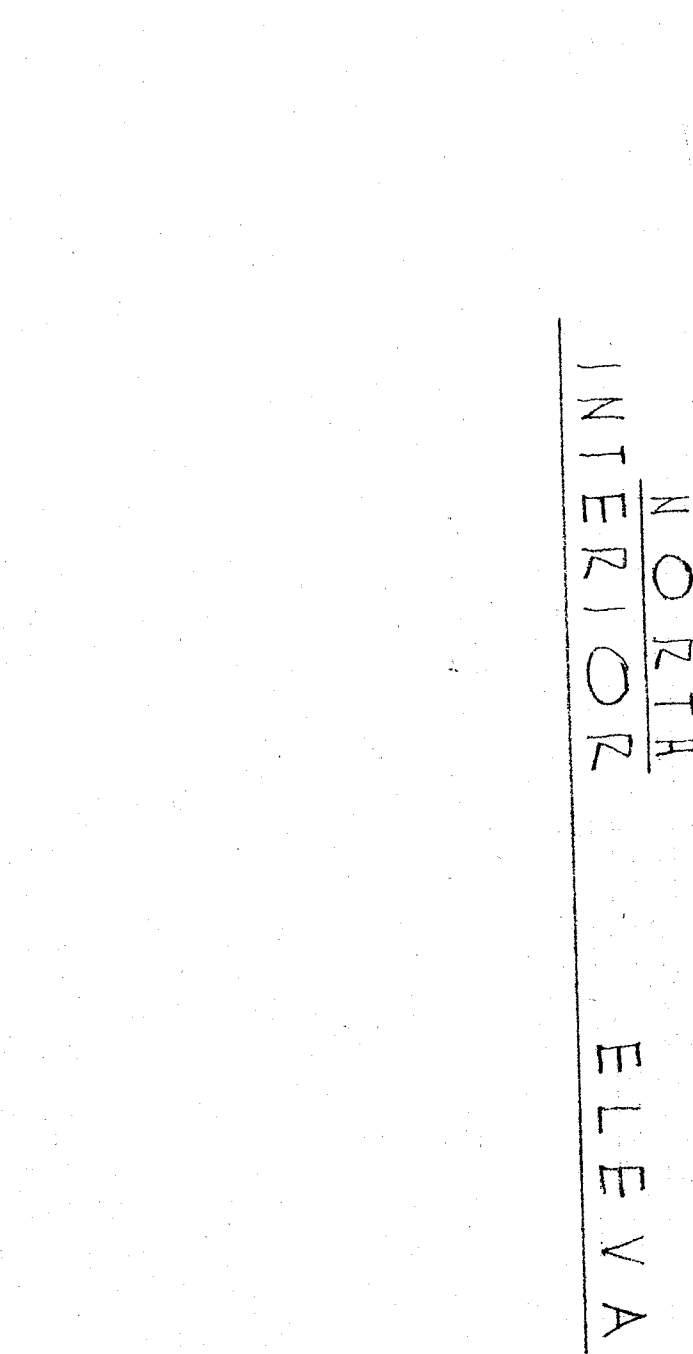
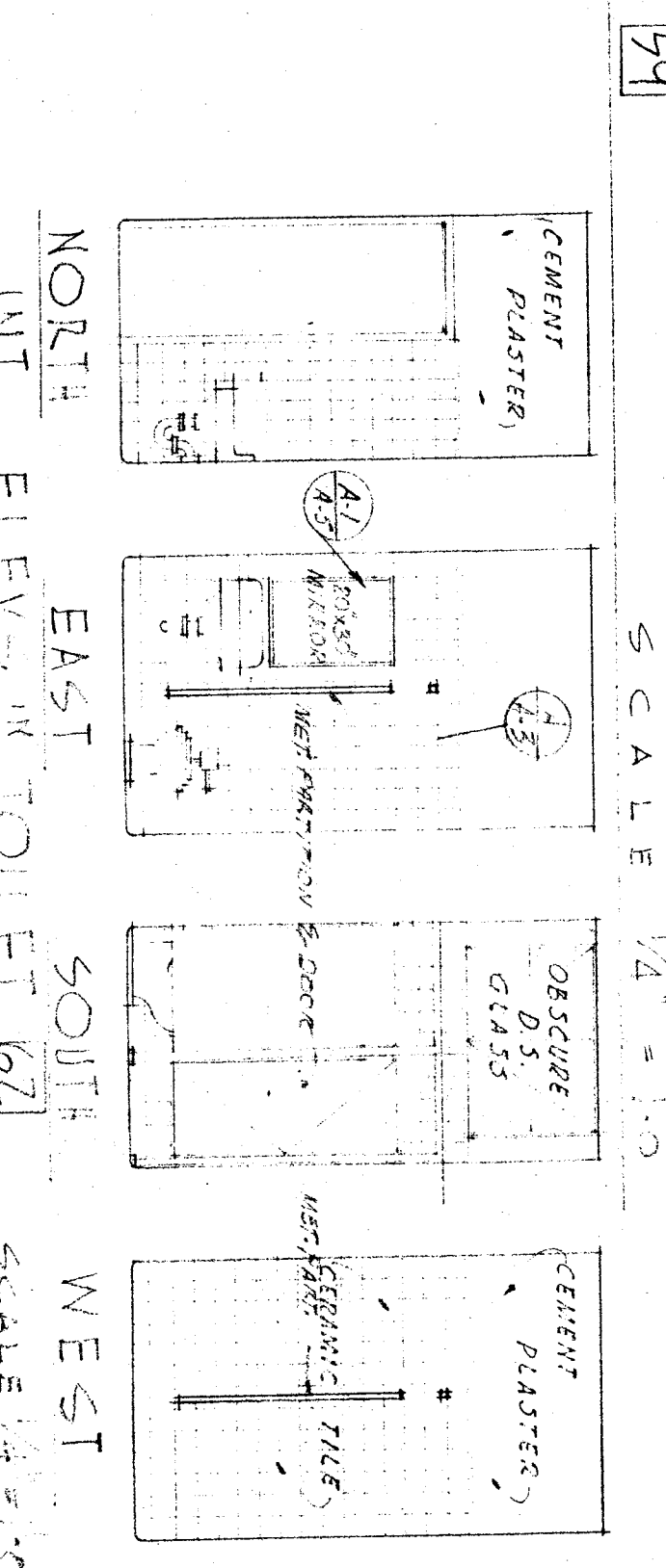
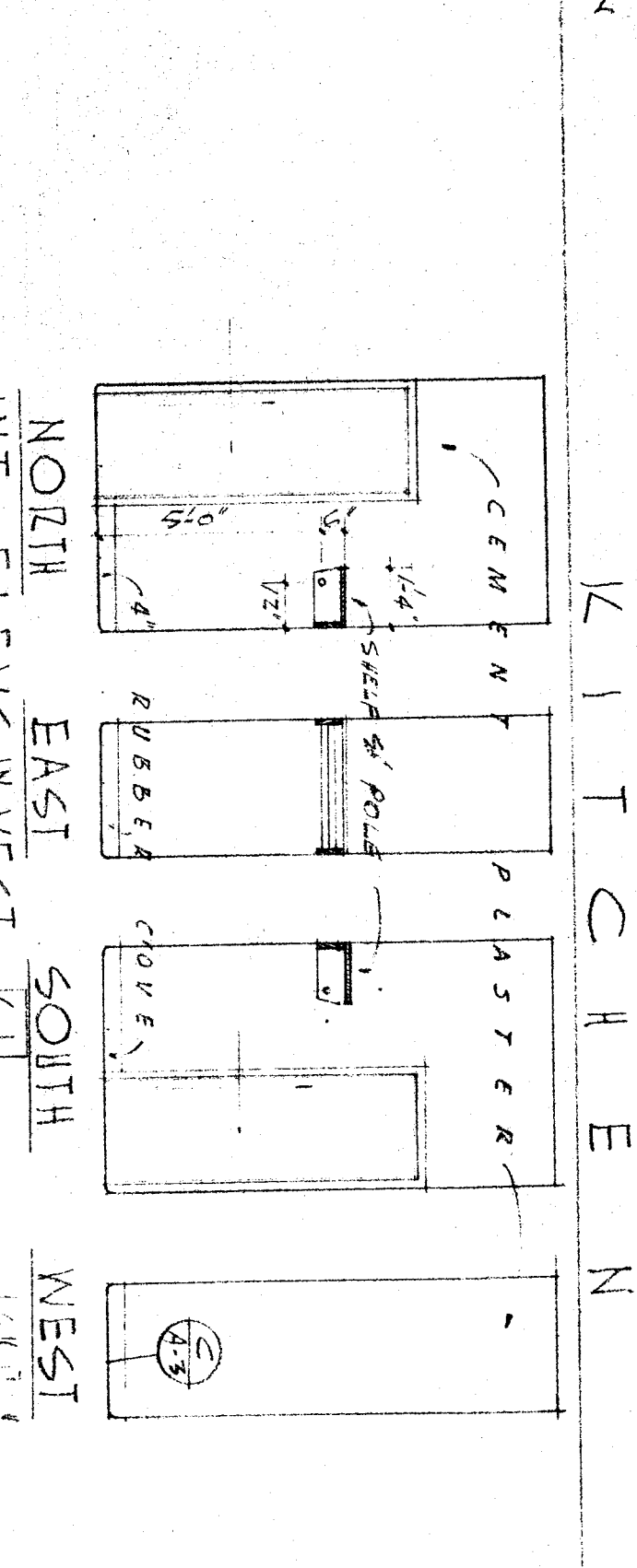
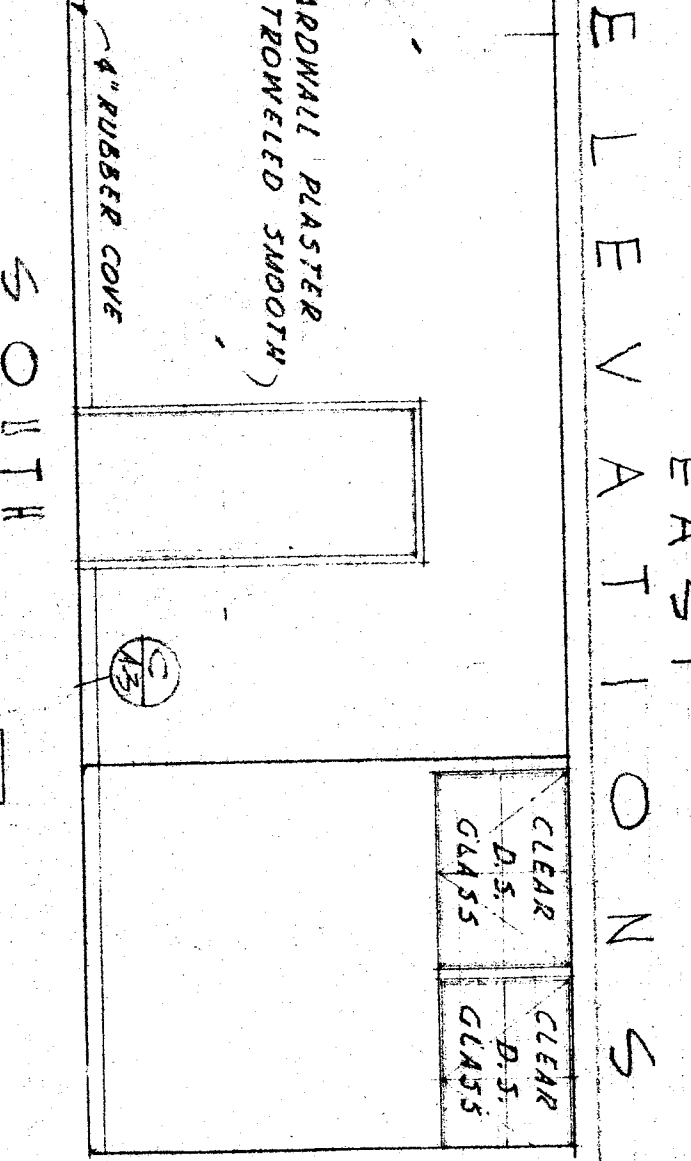
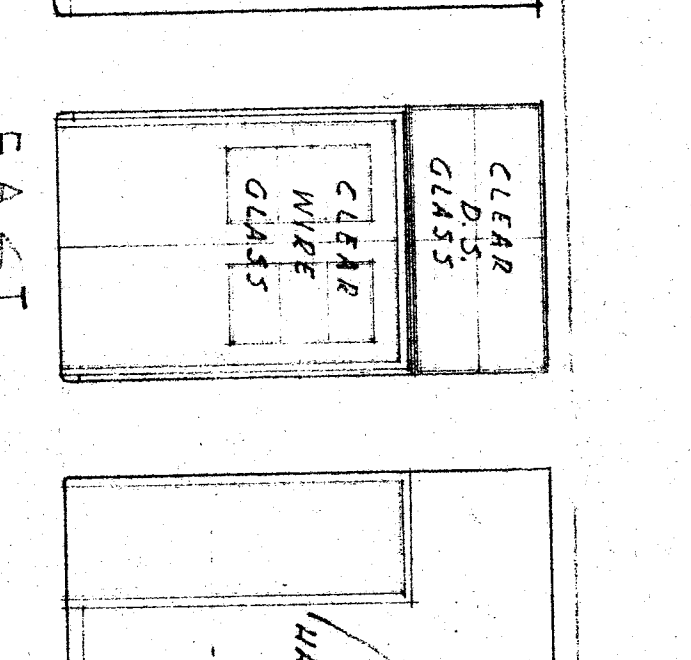
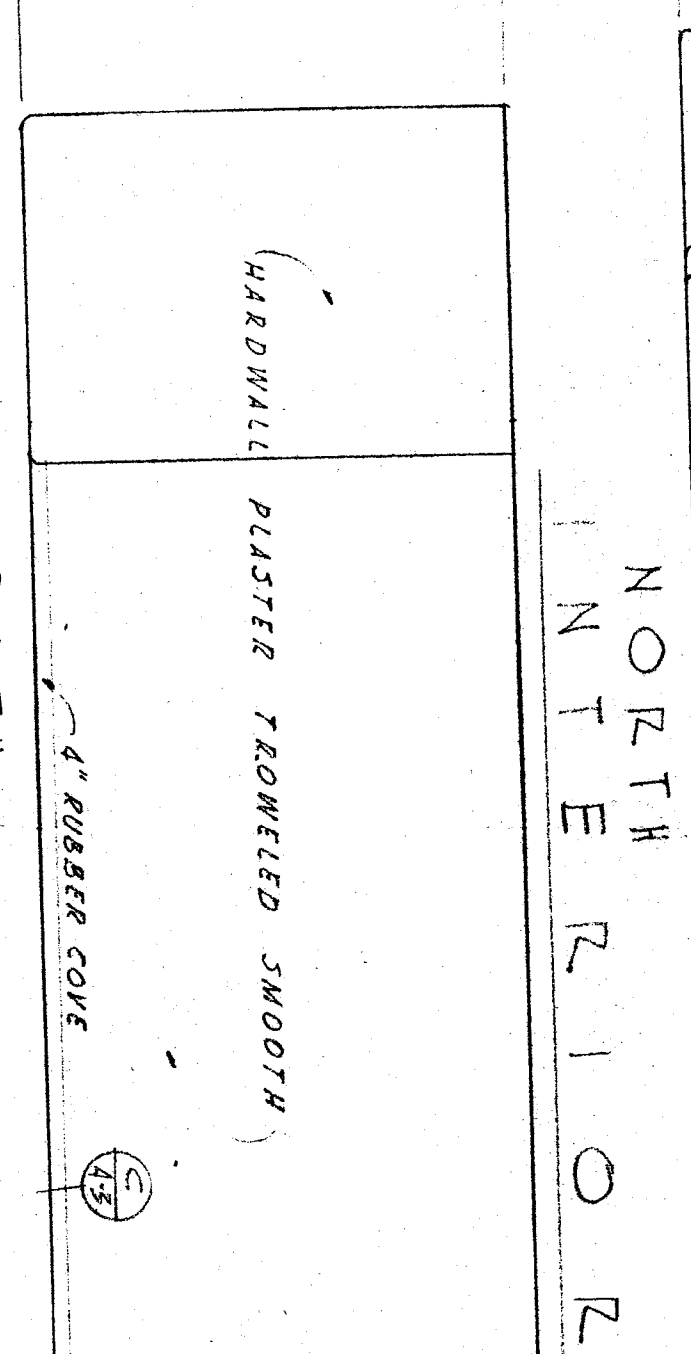
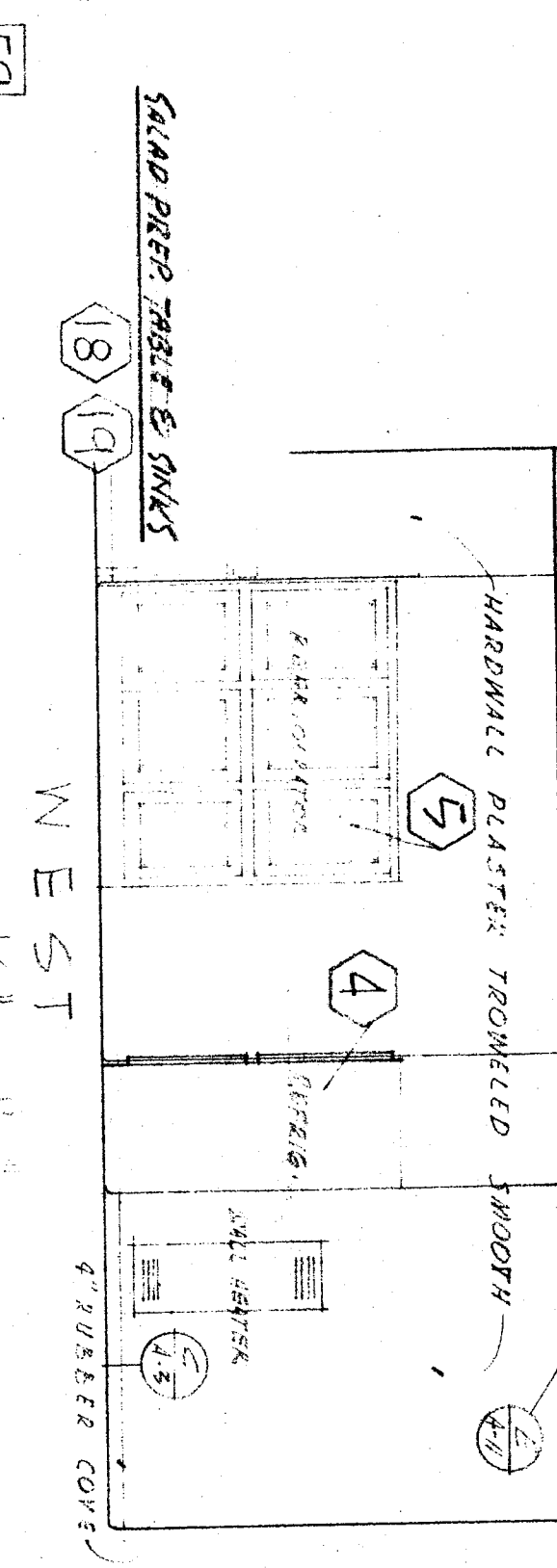
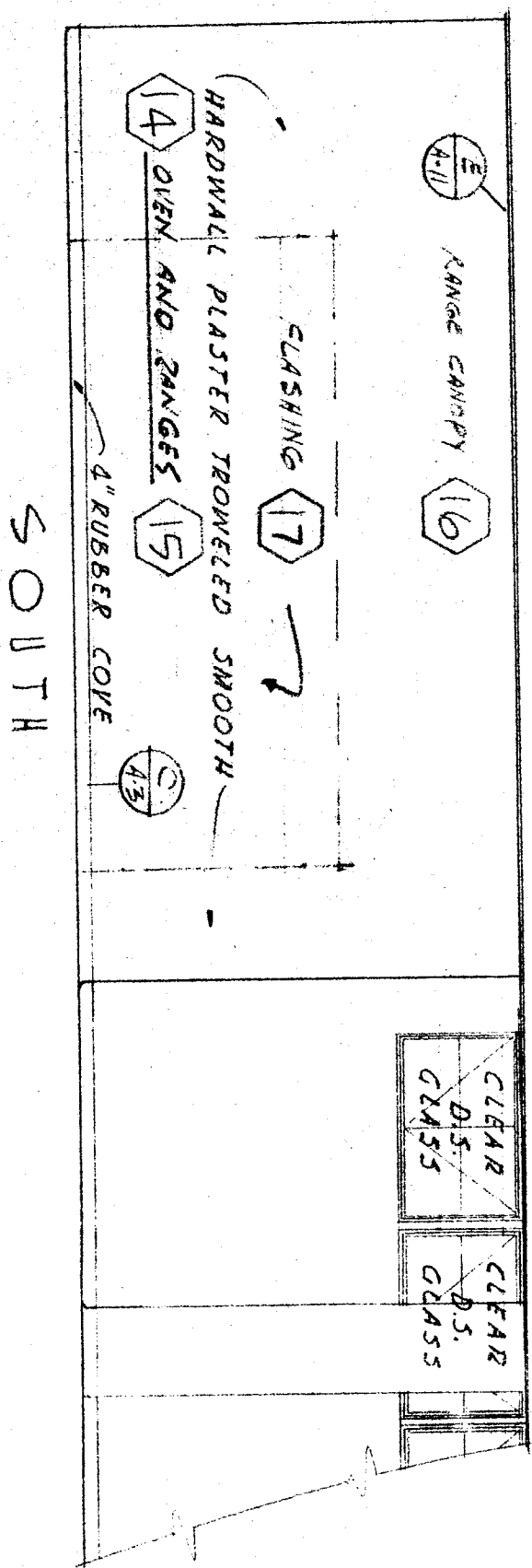
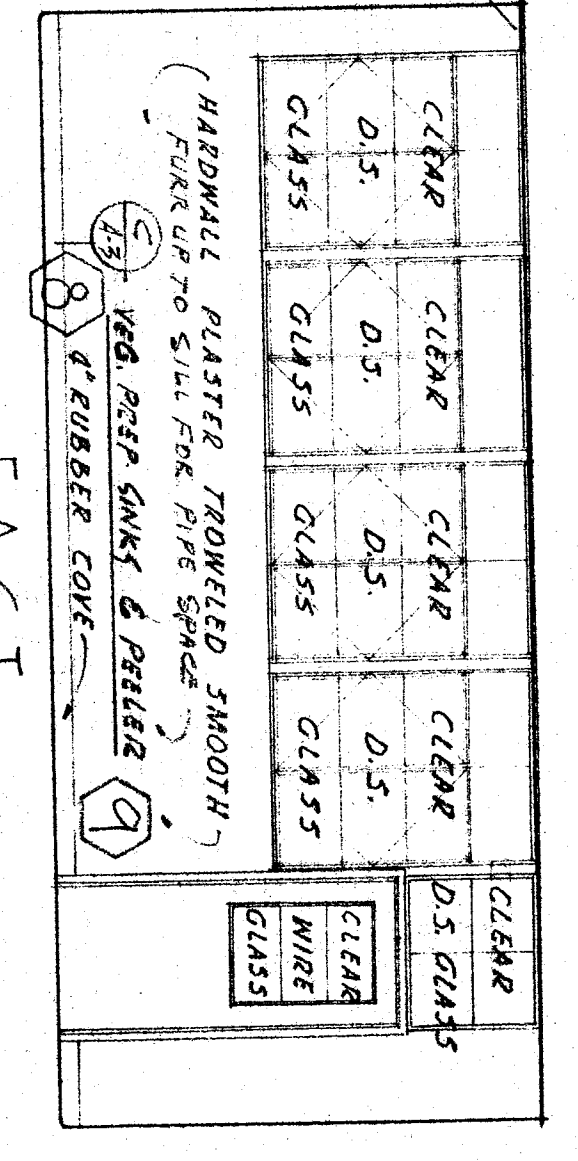


NOTE: SEE PLAN AND SECTION FOR POSITION OF EQUIPMENT



CHECK AND VERIFY ALL DIMENSIONS BEFORE PROCEEDING WITH THE WORK. REPORT ANY DISCREPANCIES TO ARCHITECT.

COUNTY OF KERN  
OFFICE OF SUPERINTENDENT OF SCHOOLS  
SUPERINTENDENT

STATE OF CALIFORNIA  
DEPARTMENT OF PUBLIC WORKS  
DIVISION OF ARCHITECTURE

BAKERSFIELD CITY SCHOOLS  
BOARD OF EDUCATION

ERNEST L. MCGOY, AIA  
ARCHITECT  
1612 - 19th ST.  
BAKERSFIELD, CALIFORNIA