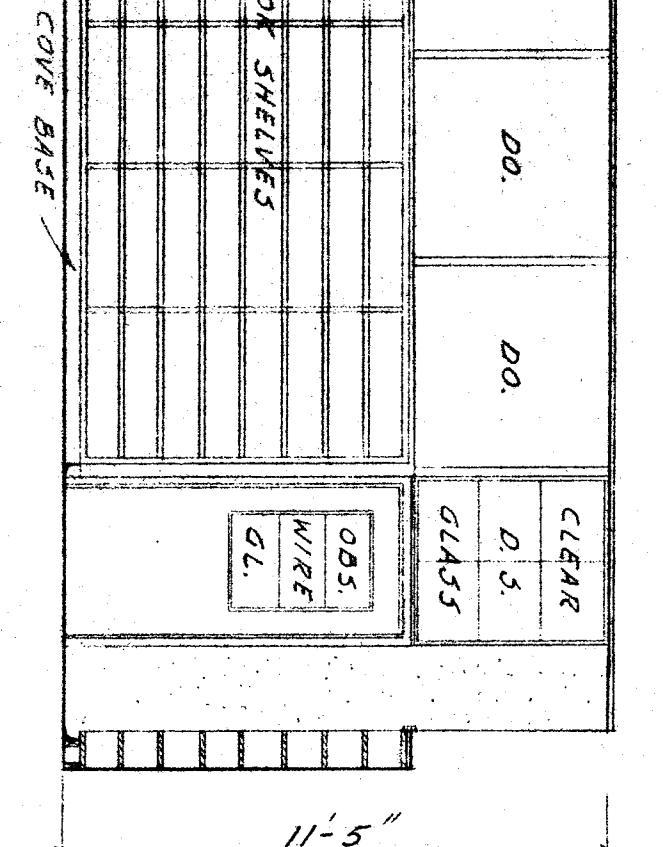
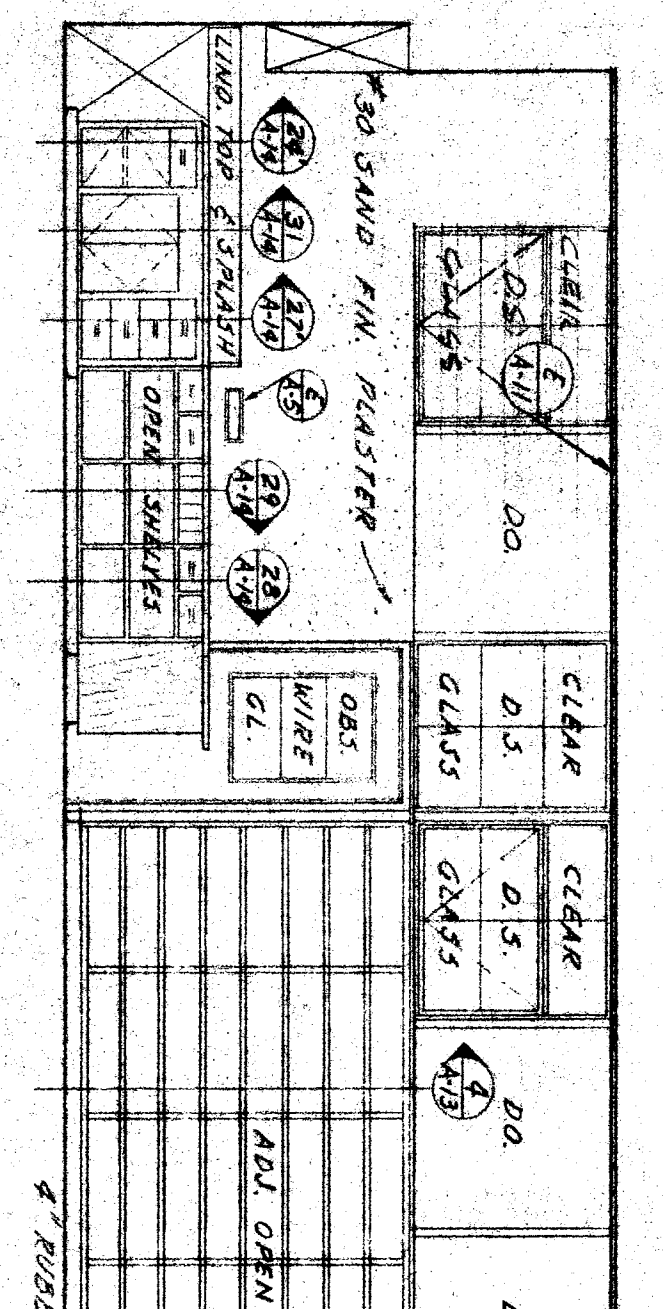
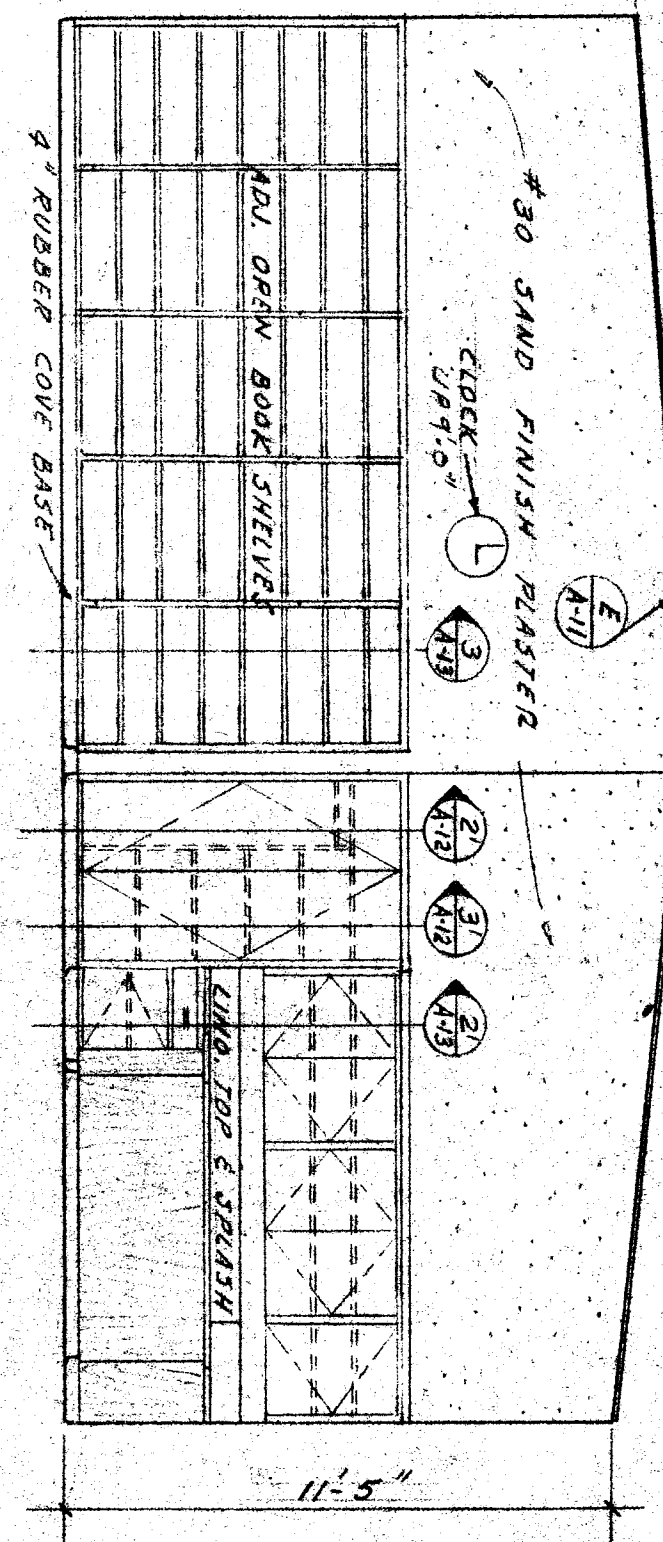
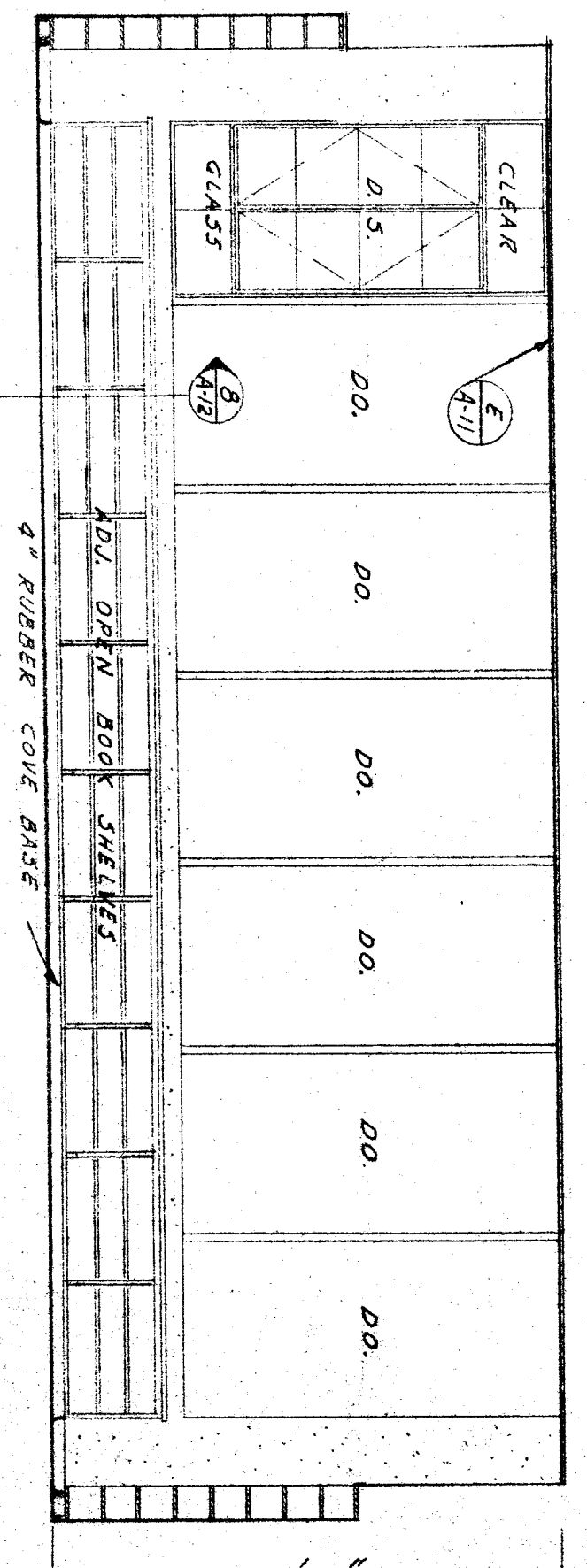
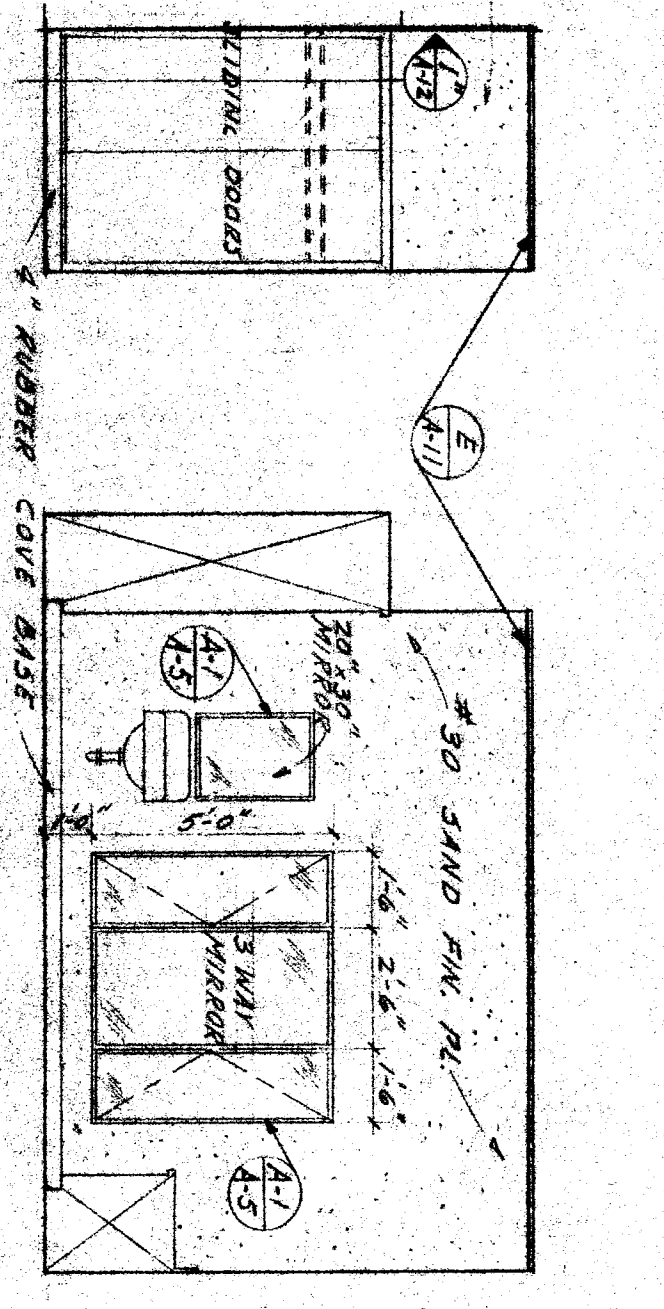
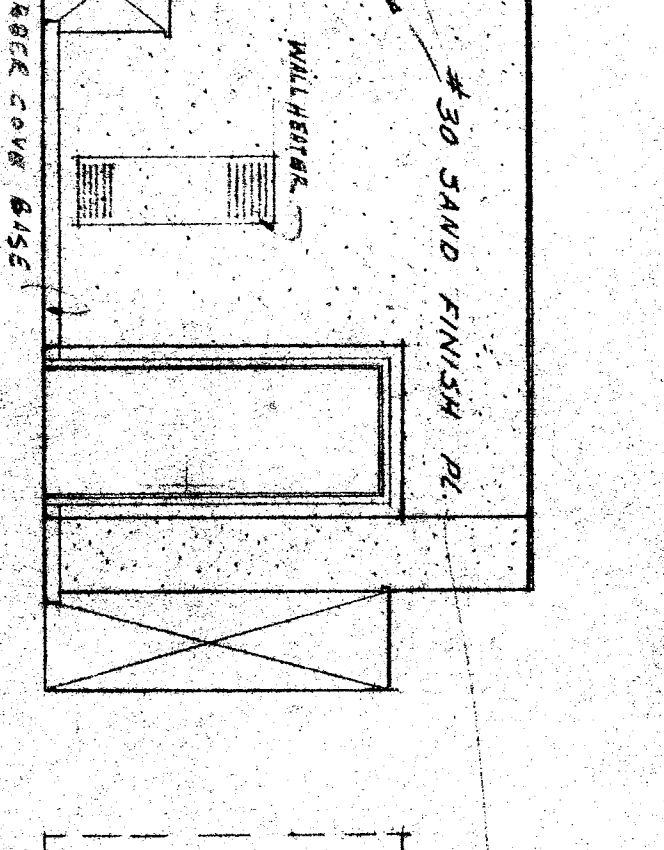
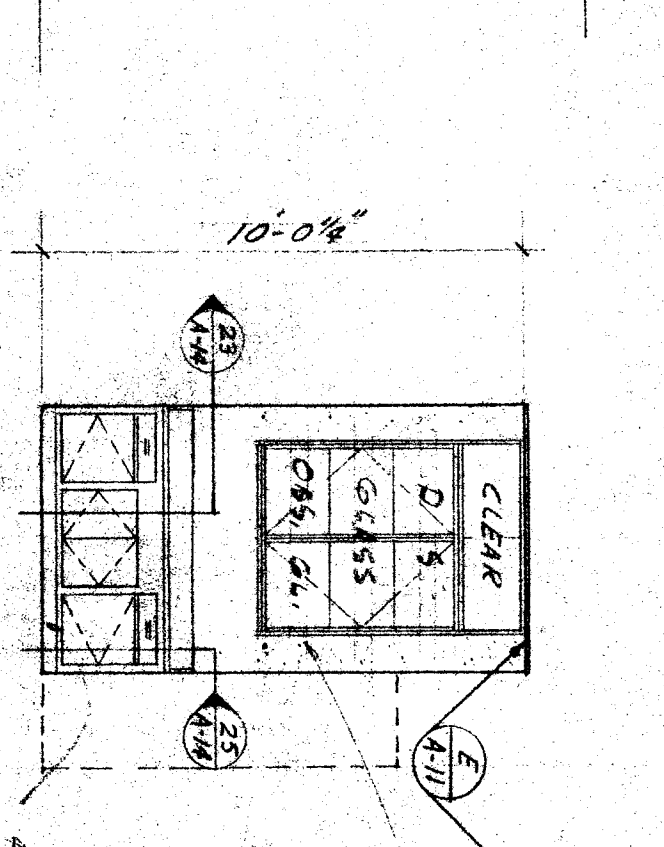
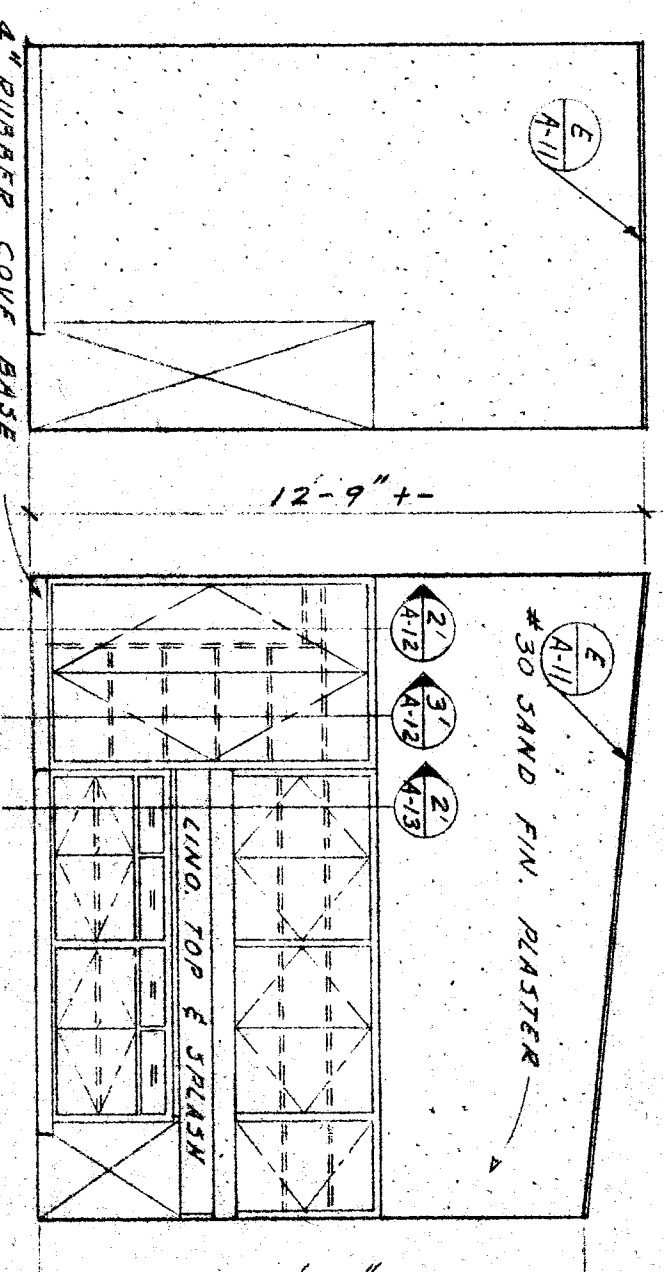


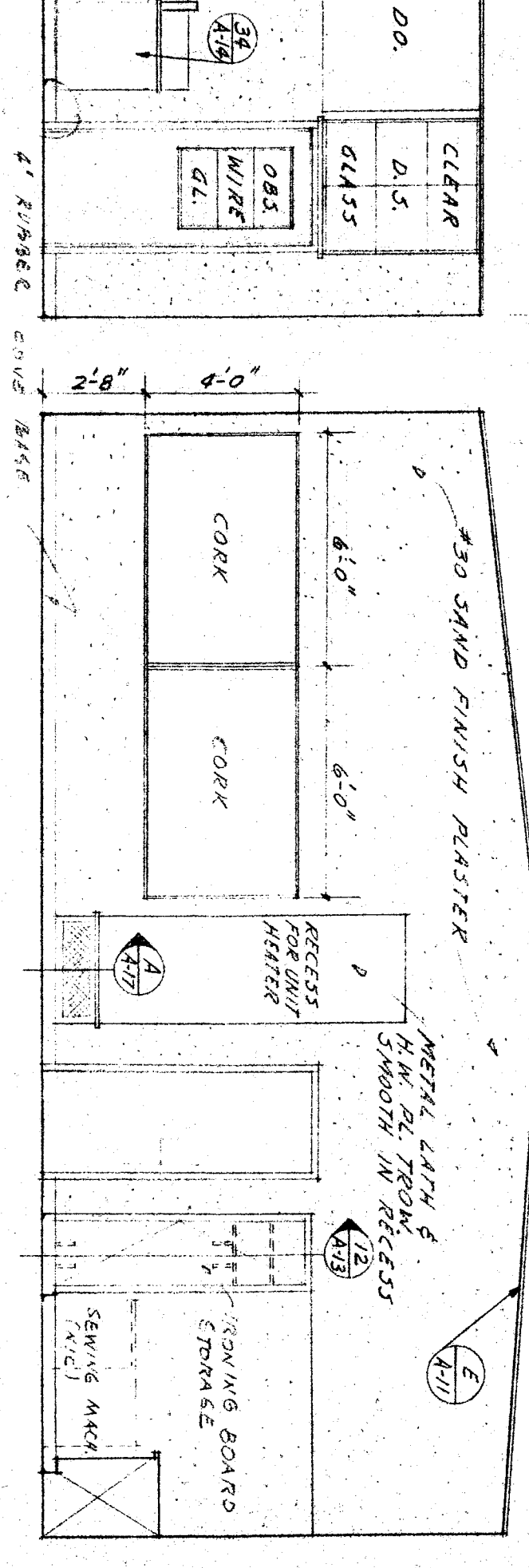
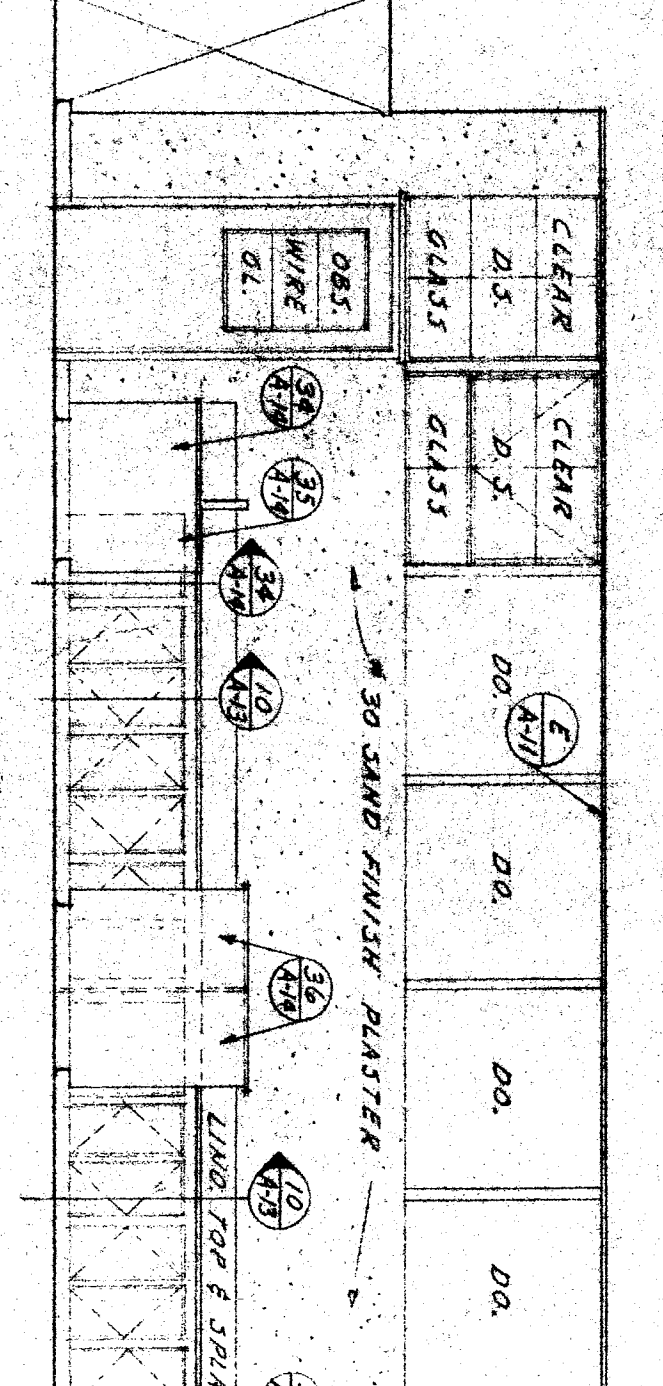
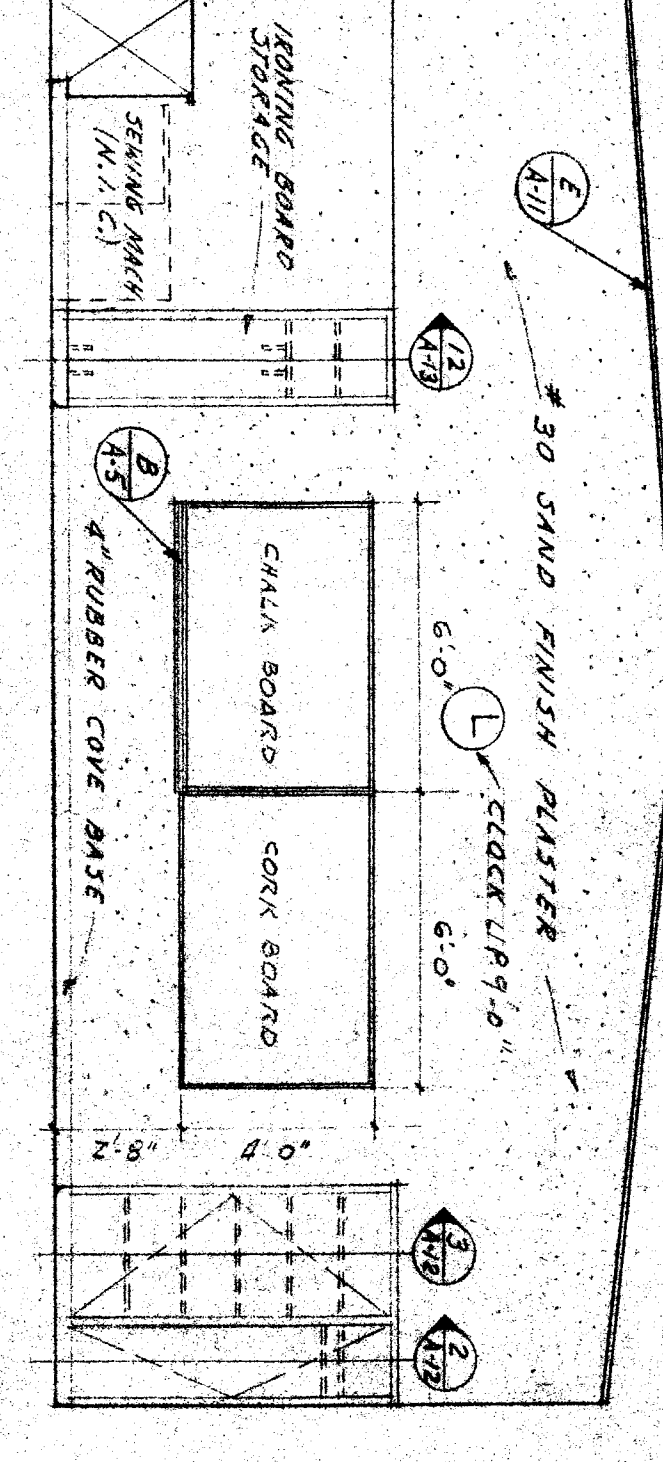
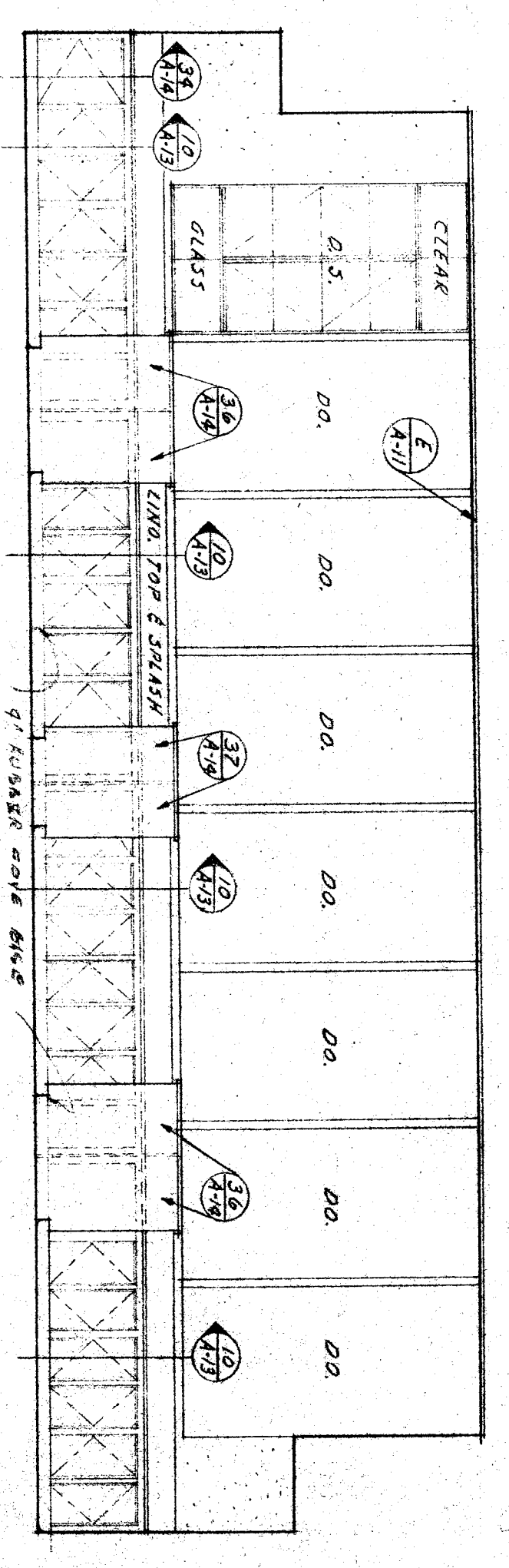
INTERIOR ELEVATIONS OF ROOM 27
SCALE 1/8" = 1'-0"



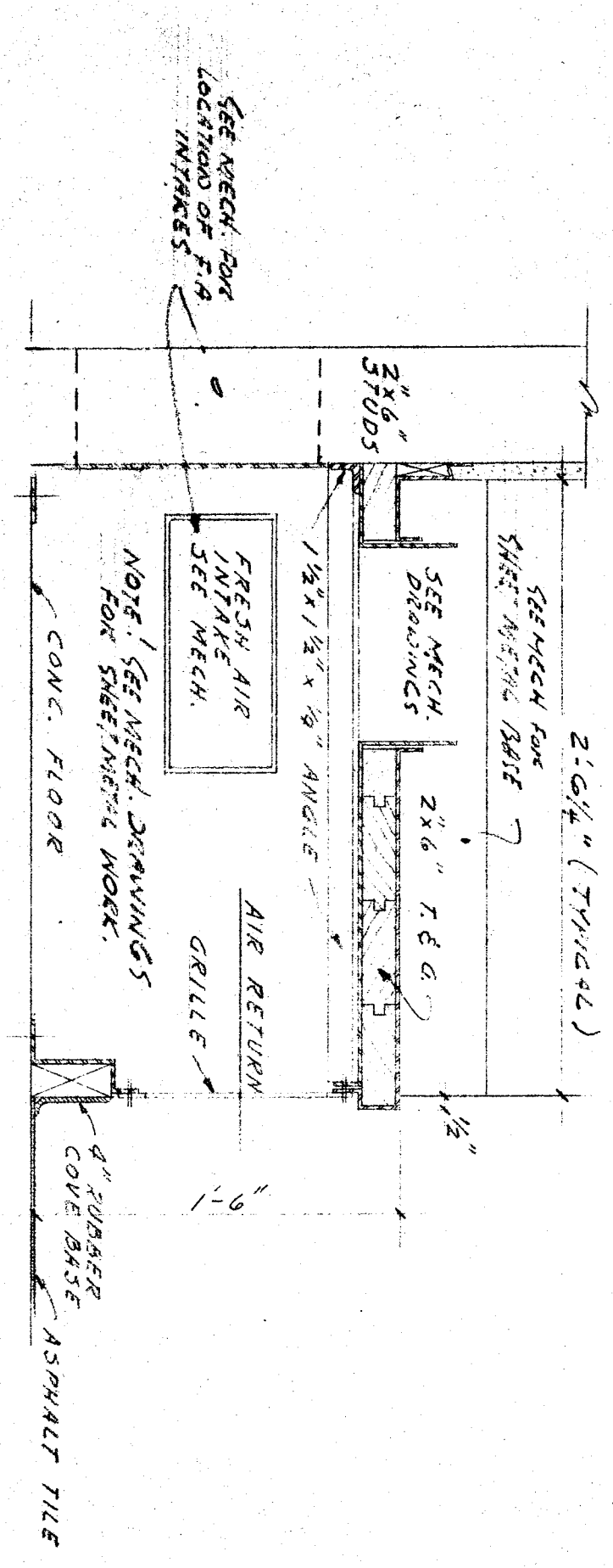
INTERIOR ELEVATIONS OF ROOM 28
SCALE 1/8" = 1'-0"



INTERIOR ELEVATIONS OF ROOM 29
SCALE 1/8" = 1'-0"



INTERIOR ELEVATIONS OF ROOM 30
SCALE 1/8" = 1'-0"



DETAIL OF UNIT HEATER PLATFORM
SCALE 1/8" = 1'-0"

CHECK AND VERIFY ALL DIMENSIONS BEFORE PROCEEDING WITH THE WORK. REPORT ANY DISCREPANCIES TO ARCHITECT.

COUNTY OF KERN OFFICE OF SUPERINTENDENT OF SCHOOLS JESSE B. STOCKTON SUPERINTENDENT	STATE OF CALIFORNIA DEPARTMENT OF PUBLIC WORKS DIVISION OF ARCHITECTURE APPROVED: [Signature] DATE: 3/1/51	BAKERSFIELD CITY SCHOOLS 1600 ST. BAKERSFIELD CALIFORNIA BOARD OF EDUCATION	JUNIOR HIGH SCHOOL BAKERSFIELD CITY SCHOOL DISTRICT BELL TERRACE B'Y CALIFORNIA BAKERSFIELD	ERNEST L. MCCOY - A-I-A- ARCHITECT 1612 - 19th ST. CALIFORNIA	DRAWN BY [Signature] DATE 3/1/51
--	--	---	--	---	---