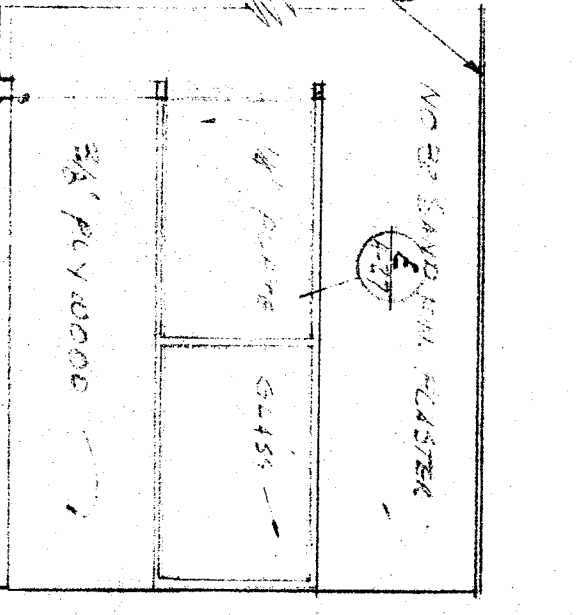
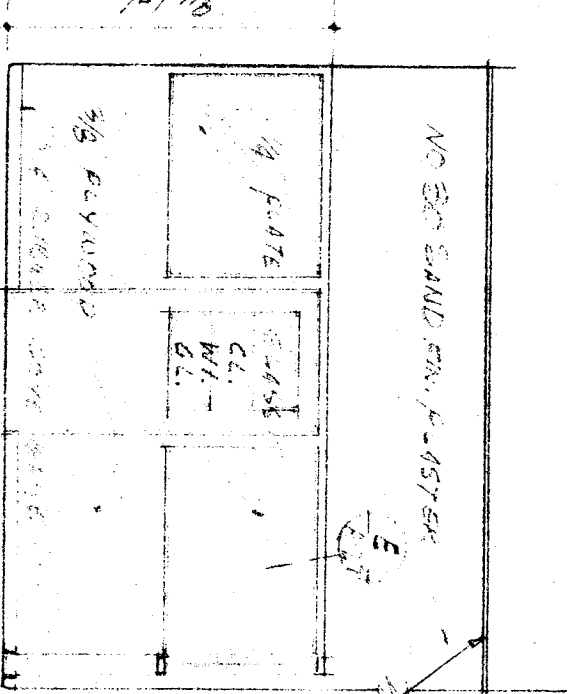
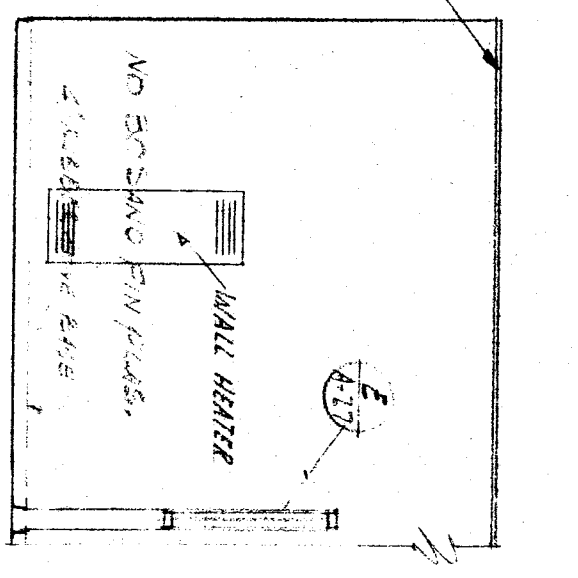
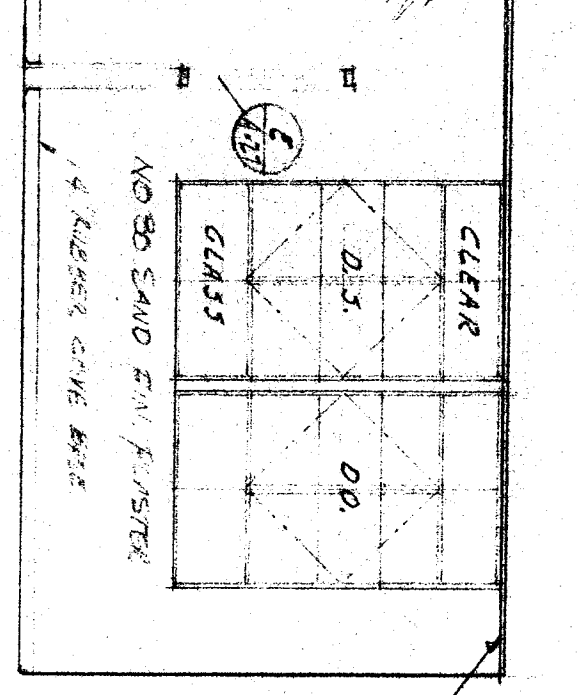
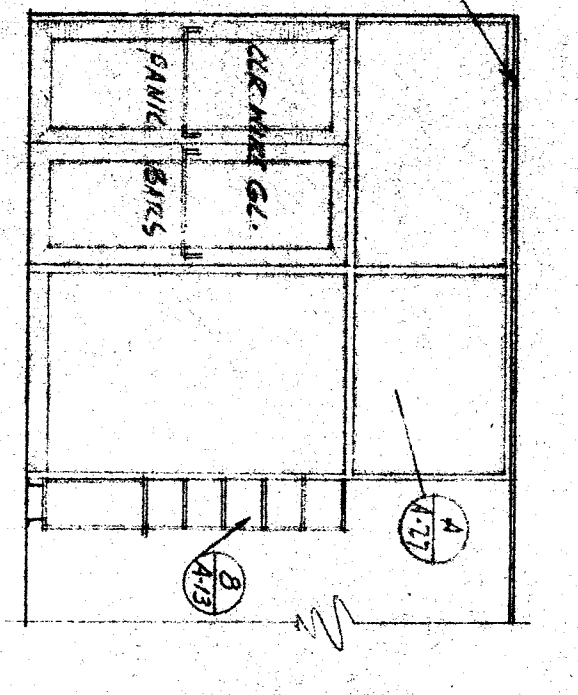
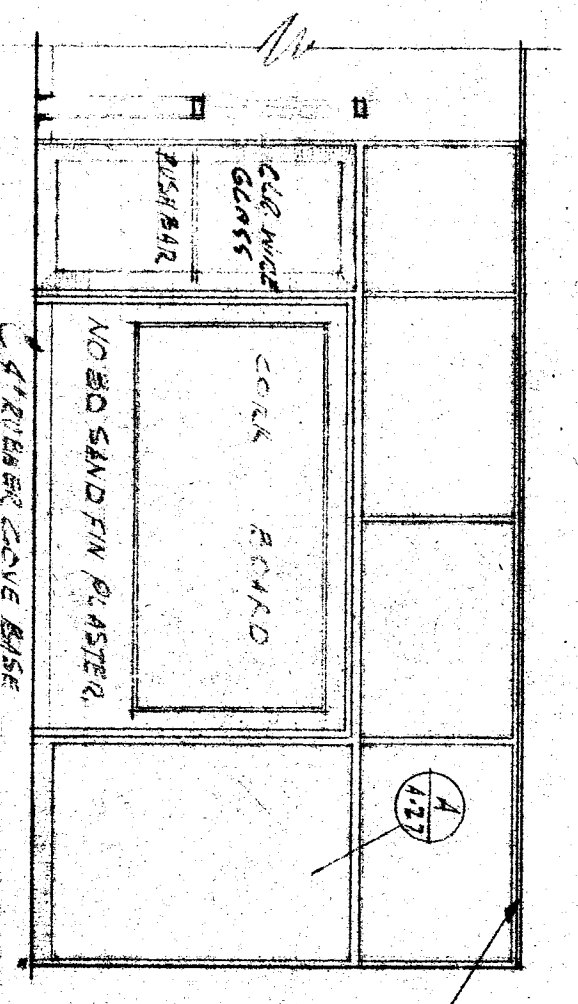
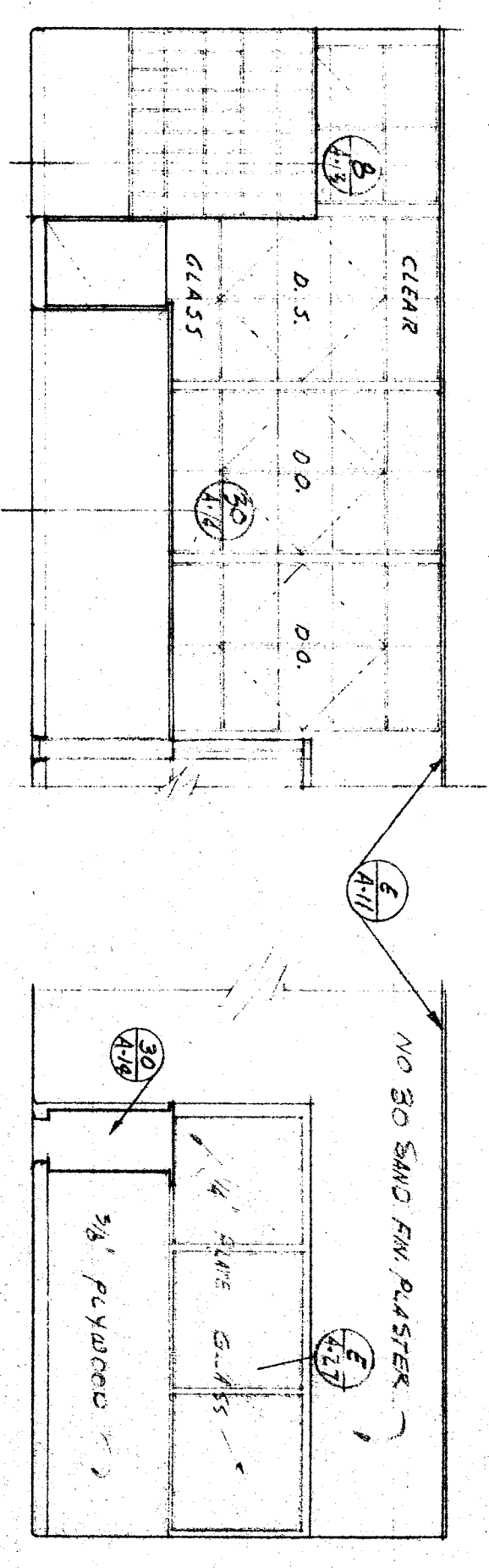
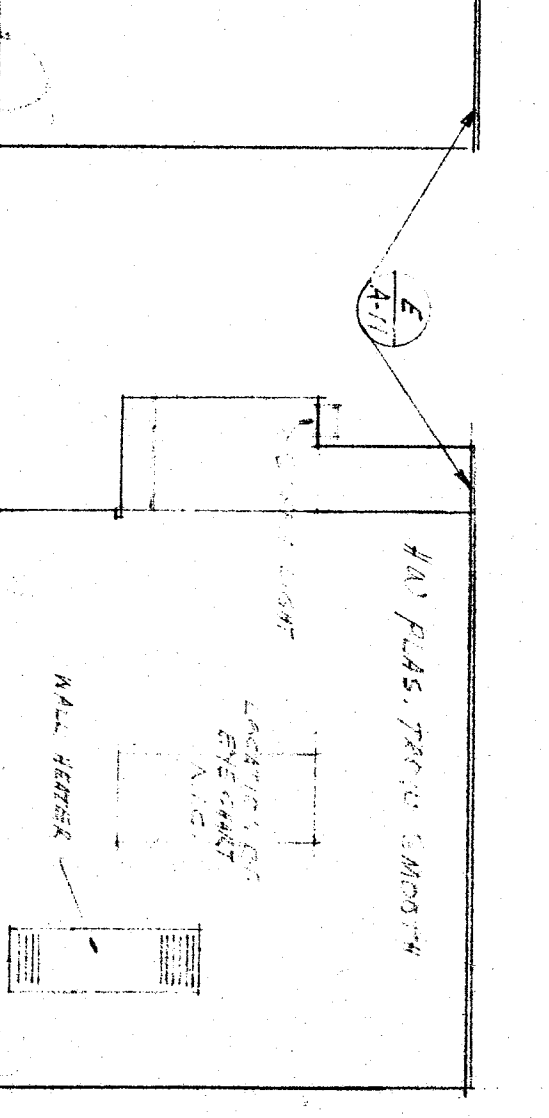
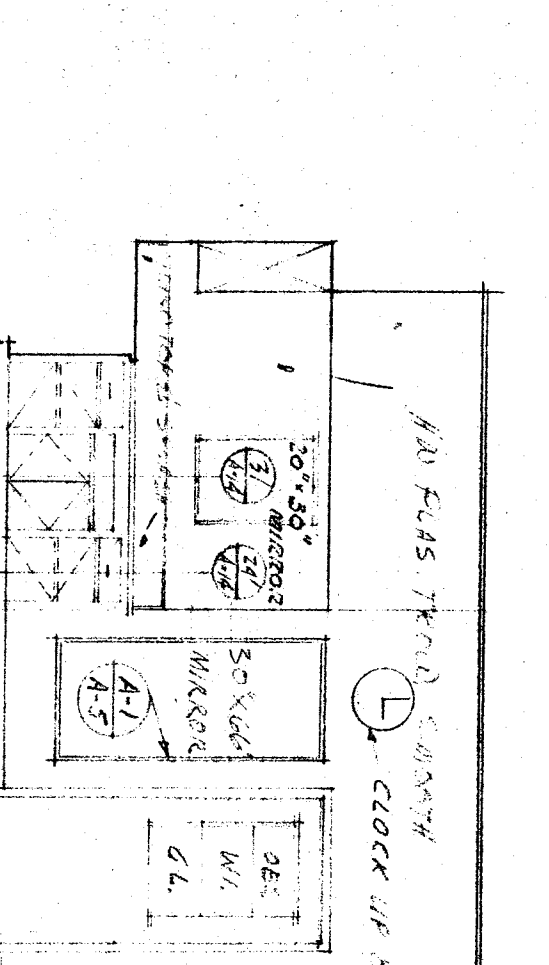
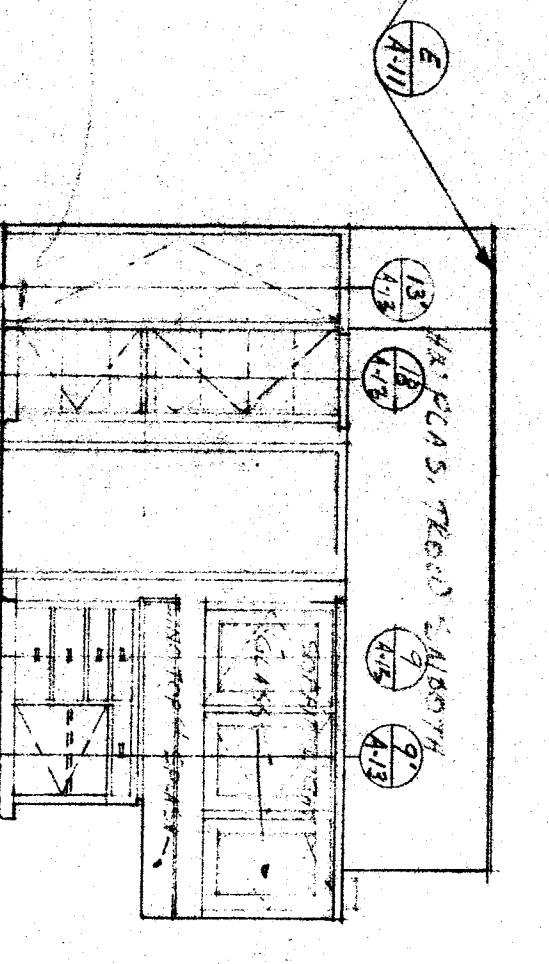
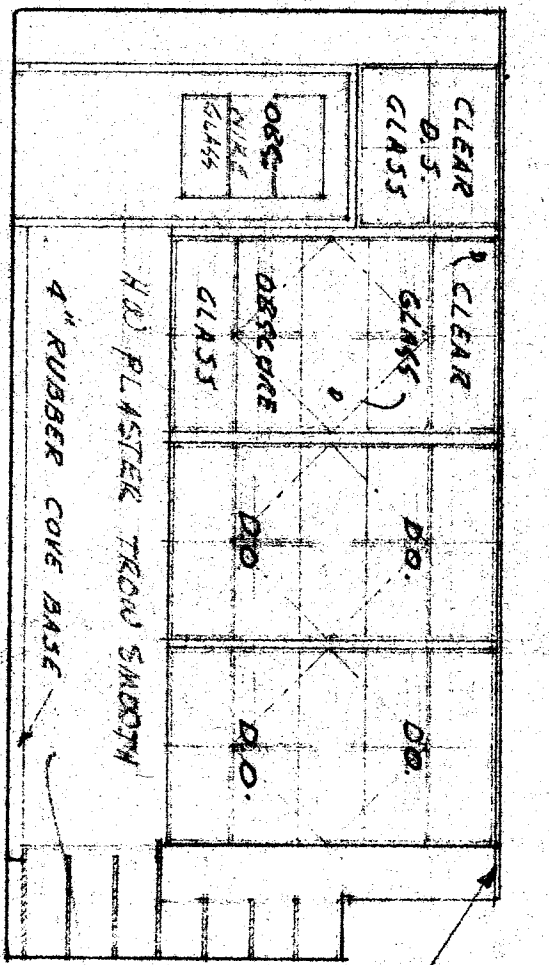
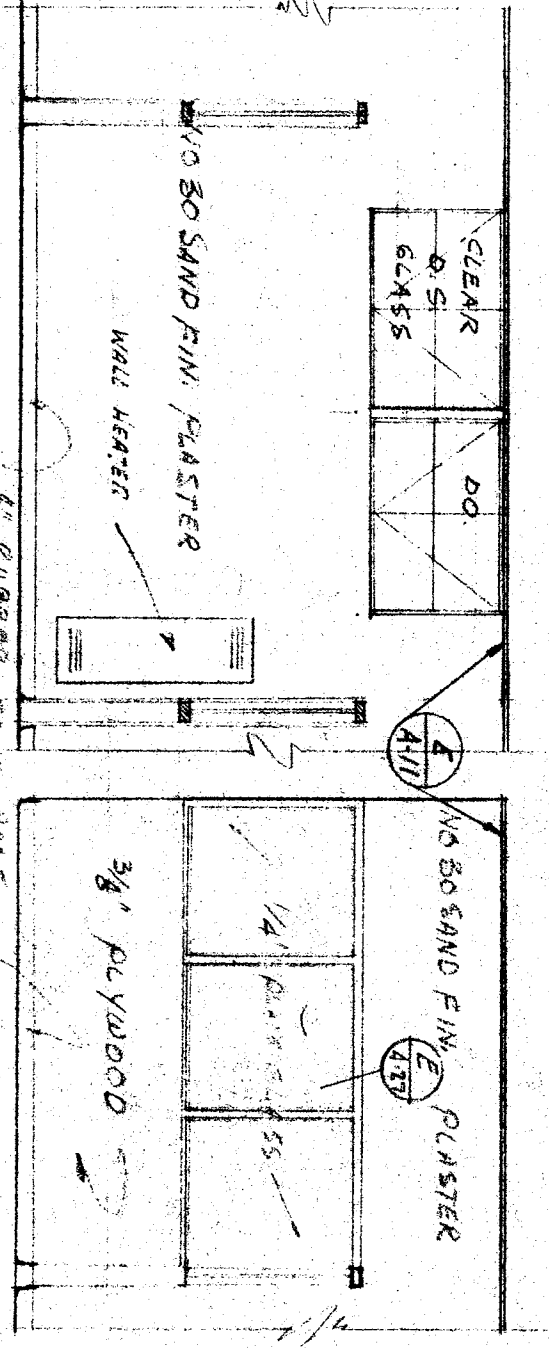
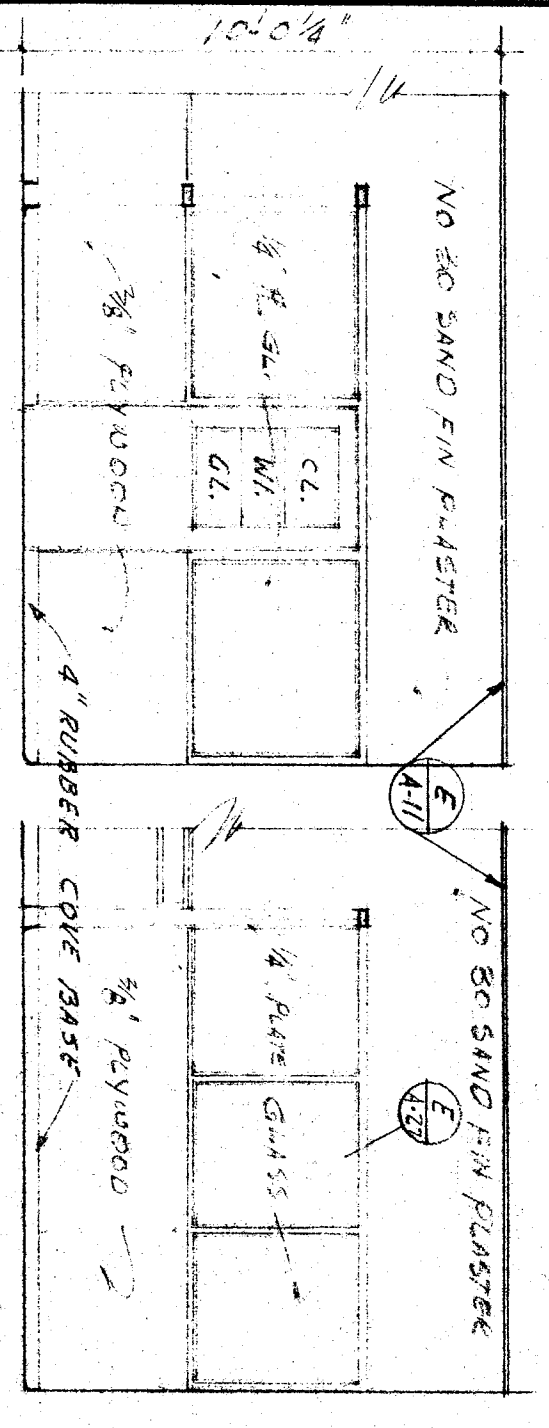


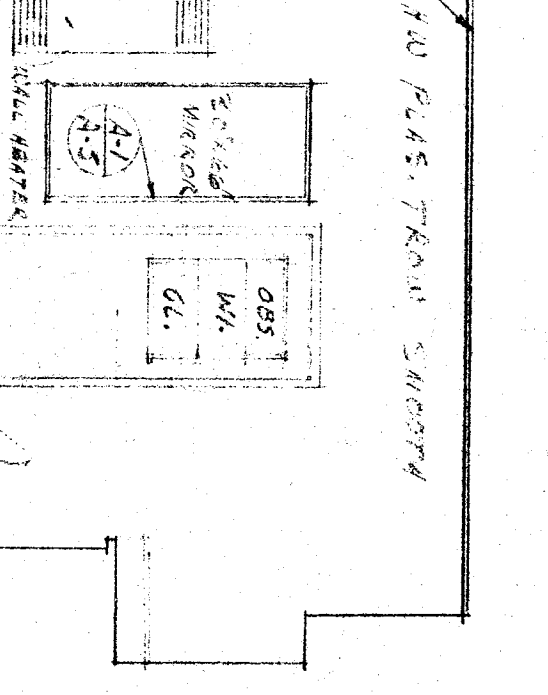
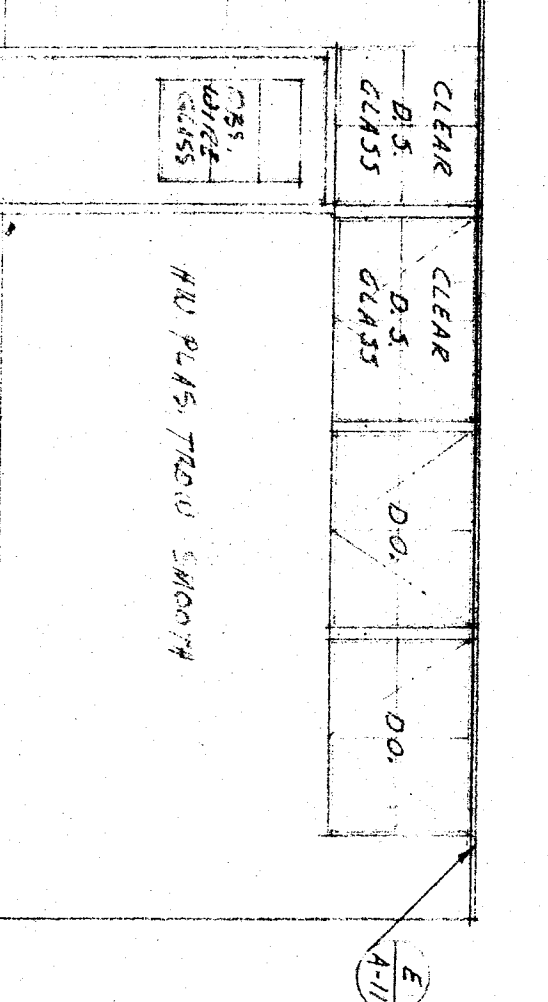
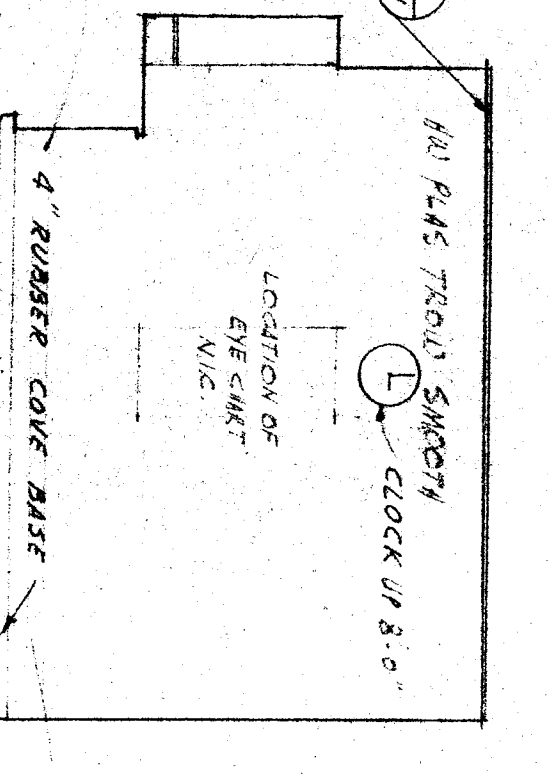
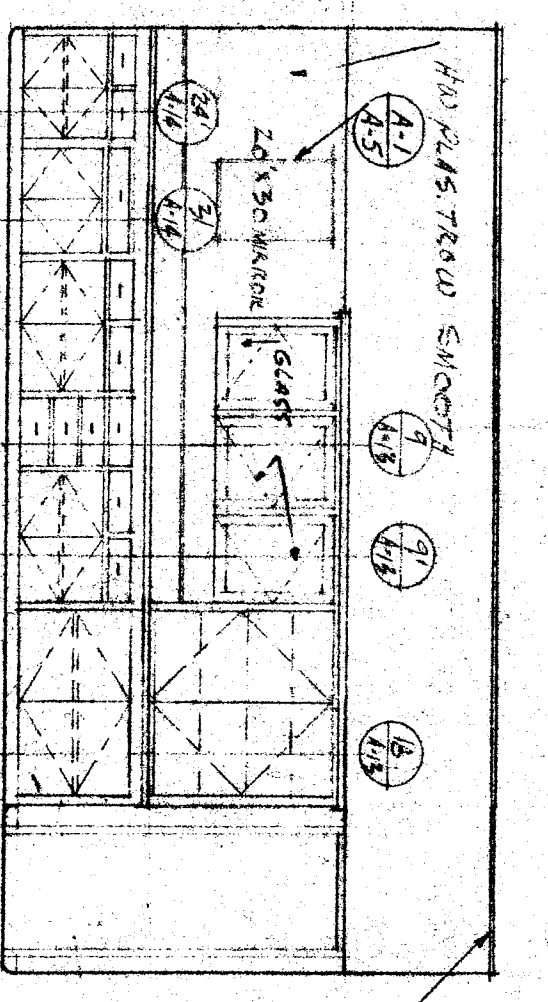
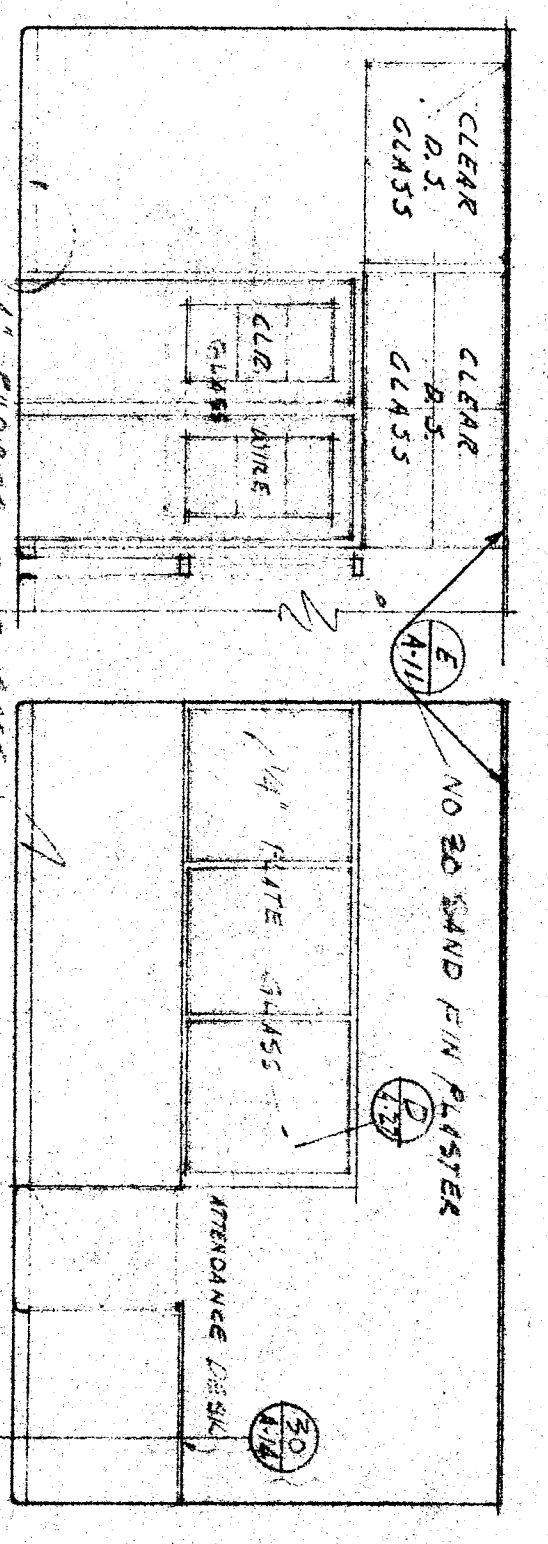
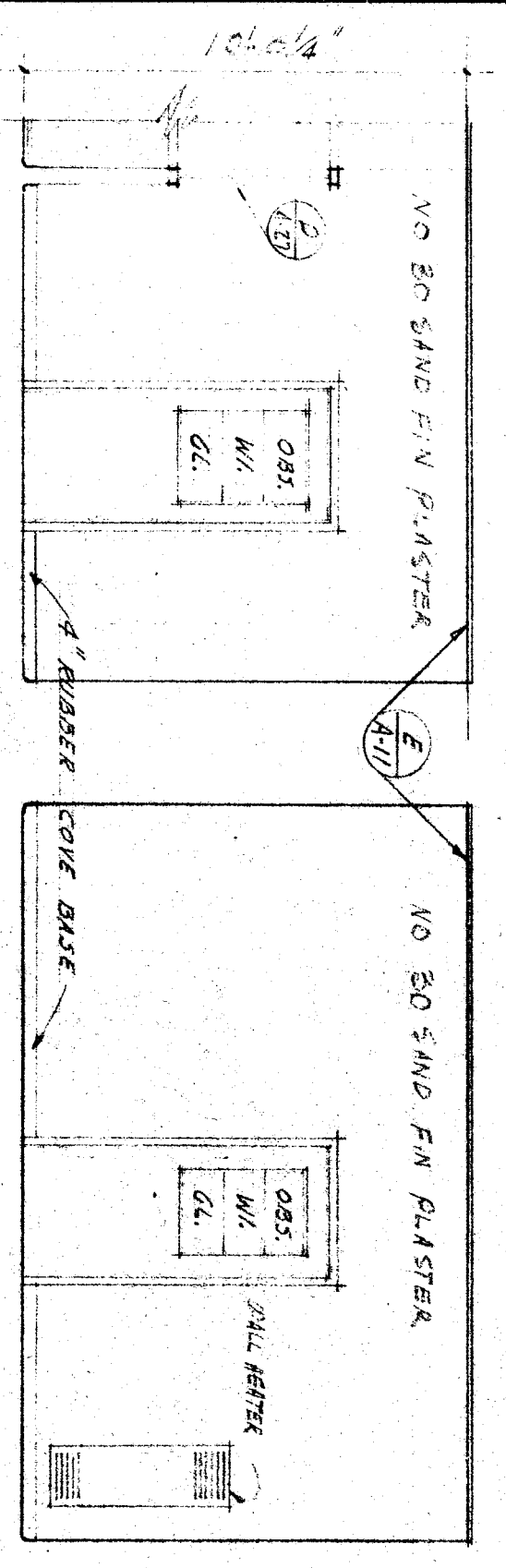
NORTH INTERIOR ELEVATIONS IN TOILET ROOM 18 SCALE 1/4" = 1'-0"



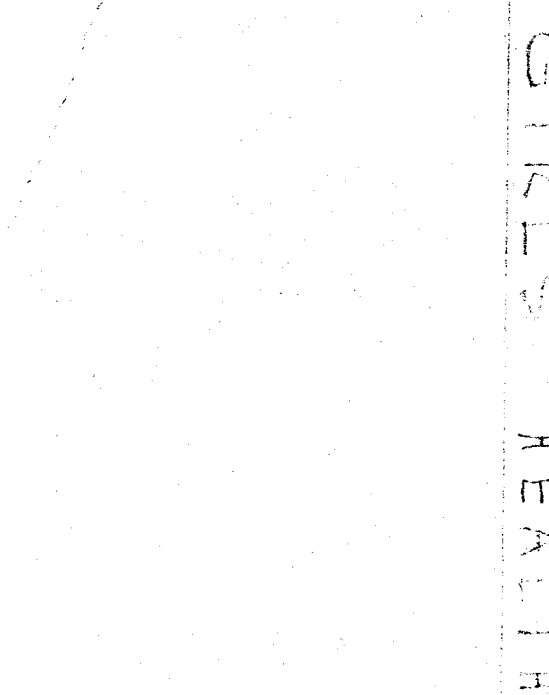
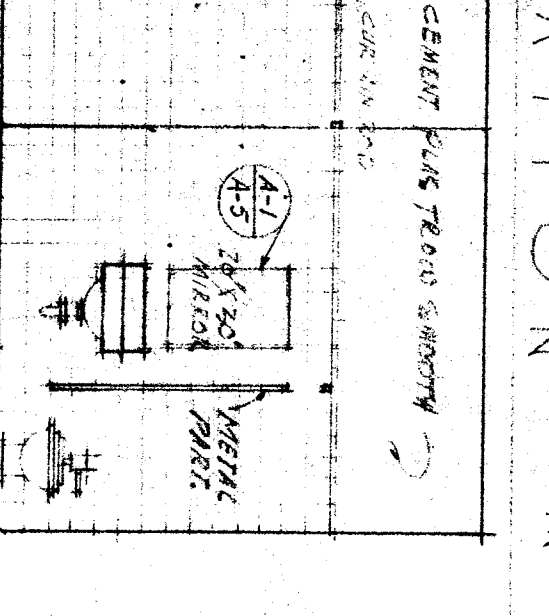
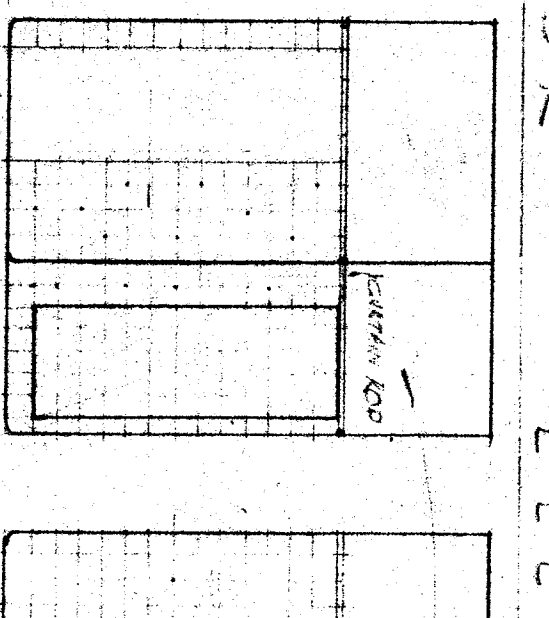
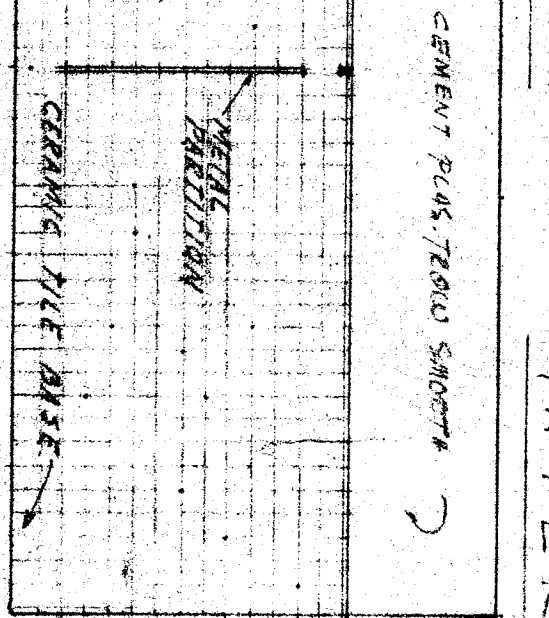
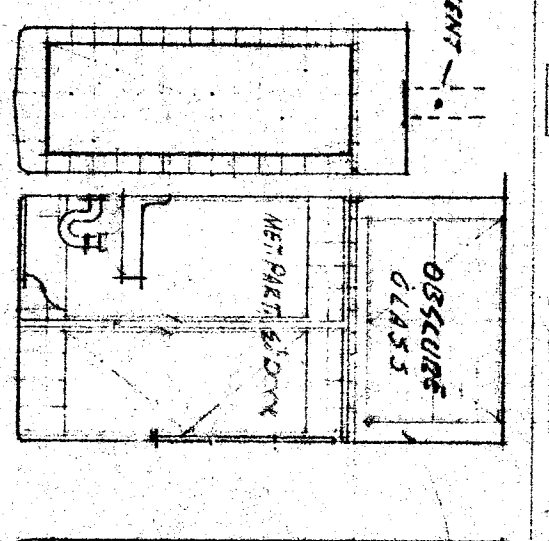
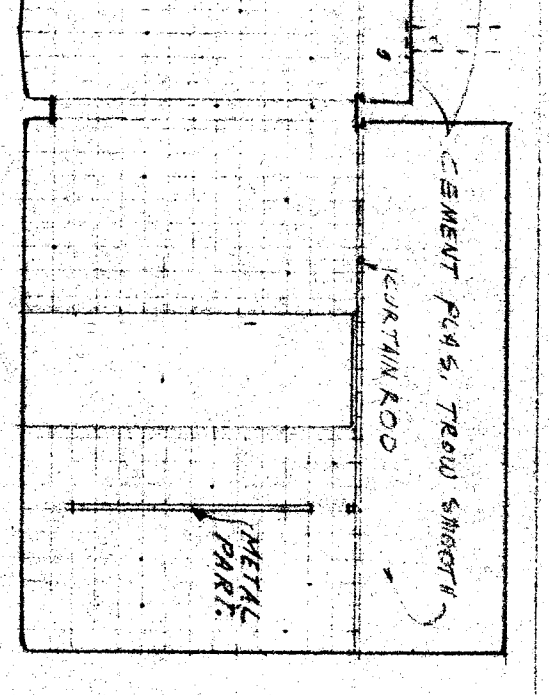
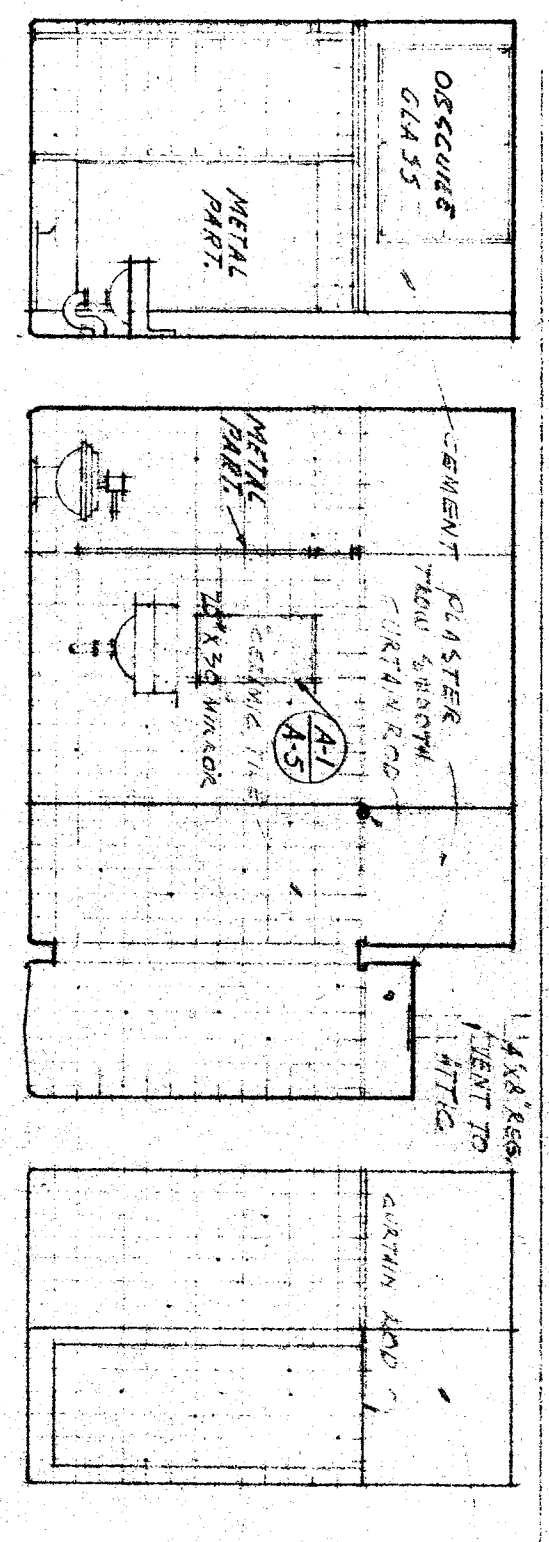
NORTH INTERIOR ELEVATIONS IN VESTIBULE 19 SCALE 1/4" = 1'-0"



NORTH INTERIOR ELEVATIONS IN COUNSELOR 21 SCALE 1/4" = 1'-0"



NORTH INTERIOR ELEVATIONS IN GIRLS HEALTH ROOM 26 SCALE 1/4" = 1'-0"



NORTH INTERIOR ELEVATIONS IN TOILET ROOM 24 SCALE 1/4" = 1'-0"

COUNTY OF KERN
 OFFICE OF SUPERINTENDENT OF SCHOOLS
 JESSE D. STOCKTON
 SUPERINTENDENT

STATE OF CALIFORNIA
 DEPARTMENT OF PUBLIC WORKS
 DIVISION OF ARCHITECTURE

STATE OF CALIFORNIA, DEPARTMENT OF PUBLIC WORKS
 DIVISION OF ARCHITECTURE
 APPROVED: *[Signature]*
 DATE: 8-8-33

BAKERSFIELD CITY SCHOOLS
 BOARD OF EDUCATION
 BAKERSFIELD, CALIFORNIA

ERNEST L. MCCOY - A.I.A. - ARCHITECT
 1612 - 19th ST.
 BAKERSFIELD, CALIFORNIA

DRAWN BY: *[Signature]*
 DATE: 3-1-33