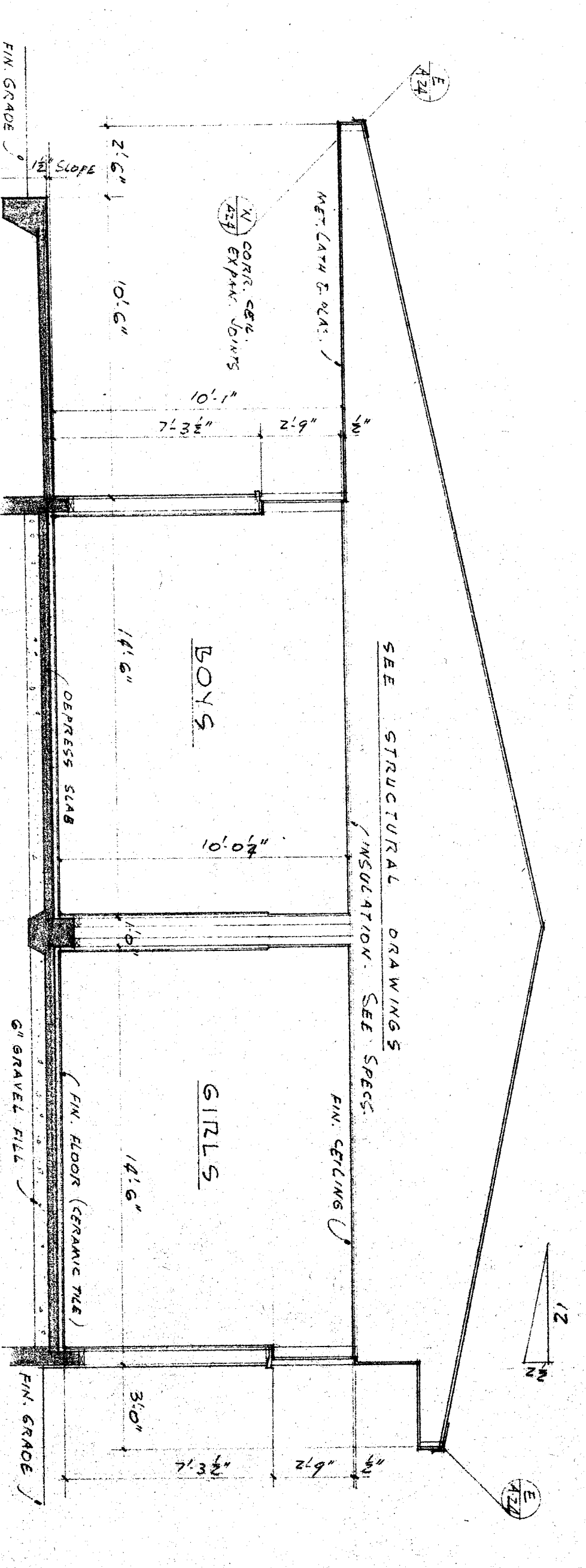
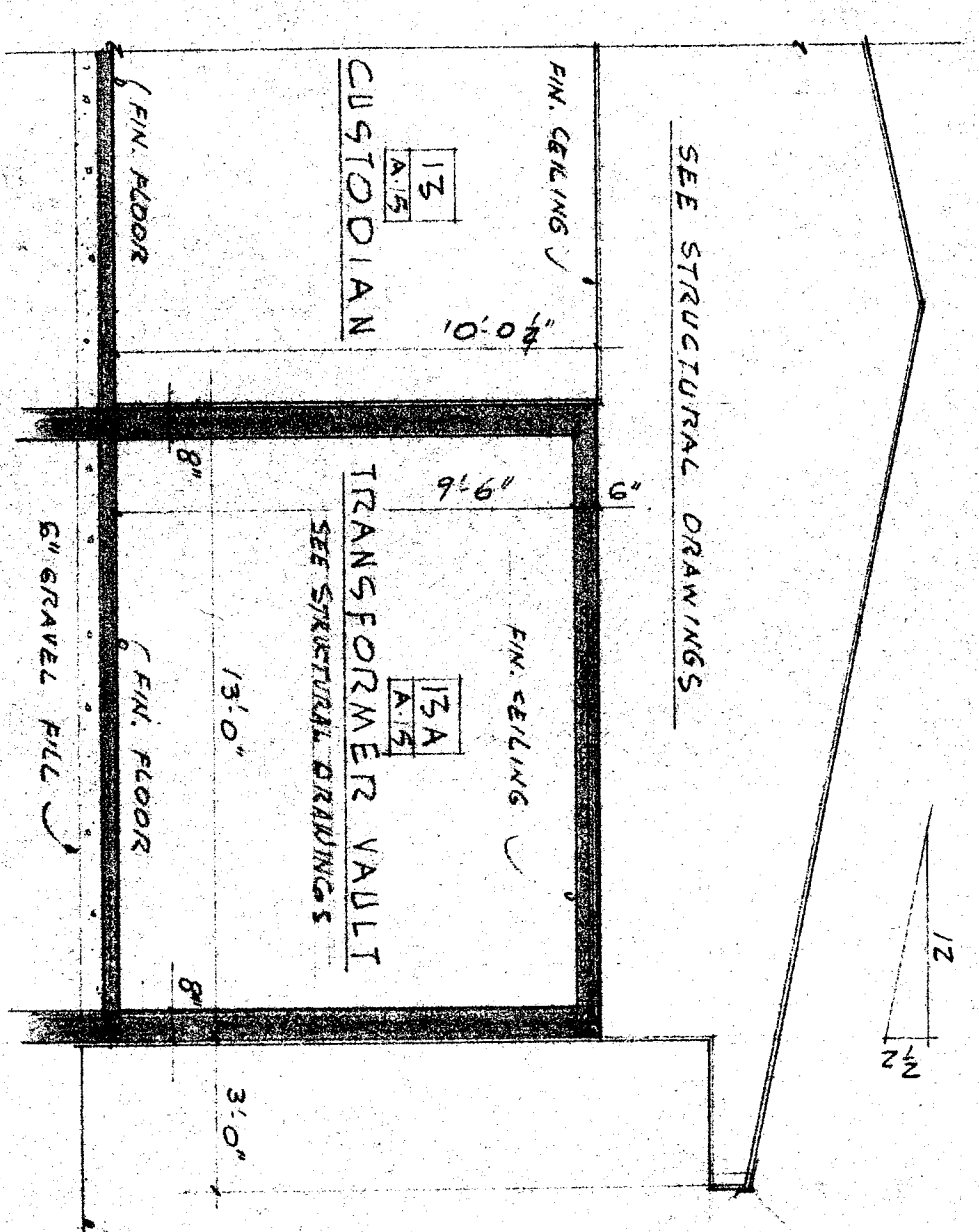


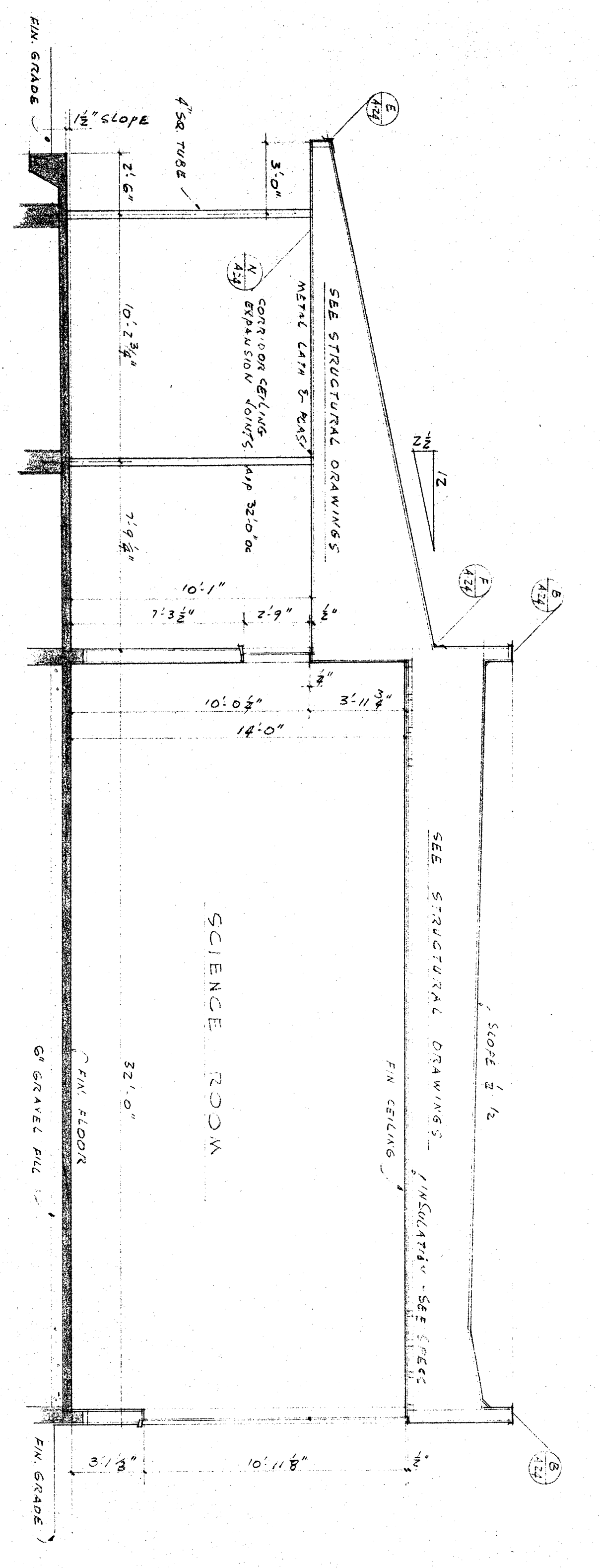
SECTION A10 TYPICAL CLASSROOM



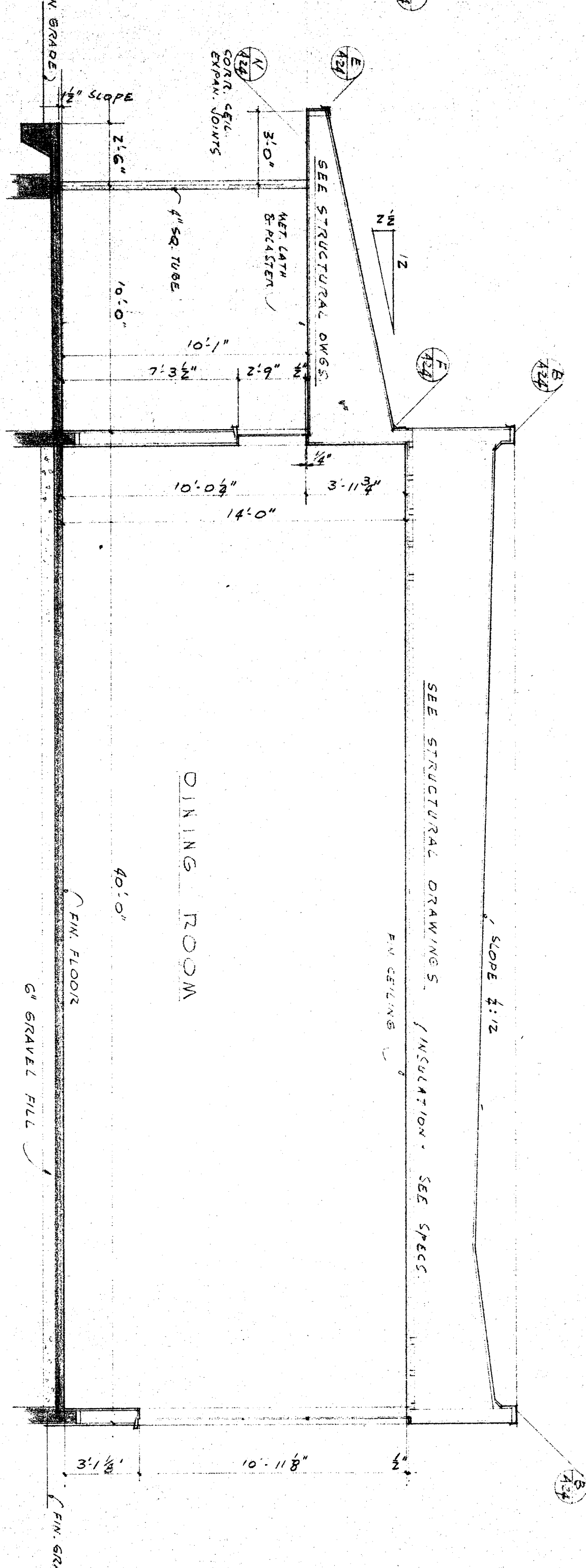
SECTION A11 BOYS & GIRLS' TOILET



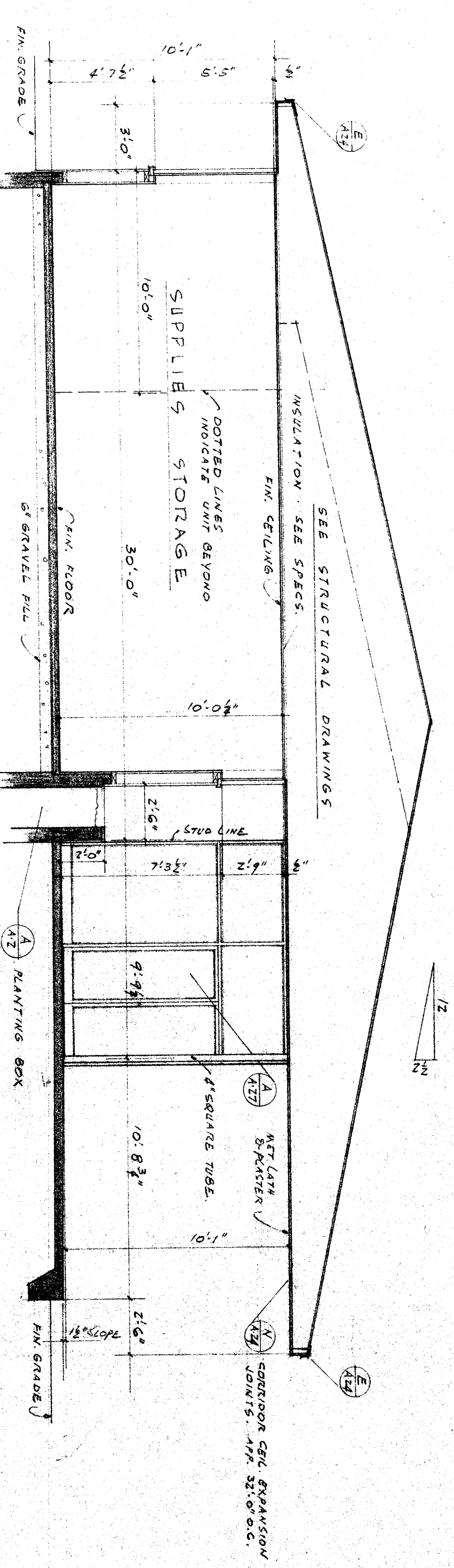
SECTION A12 TRANSF. VAULT



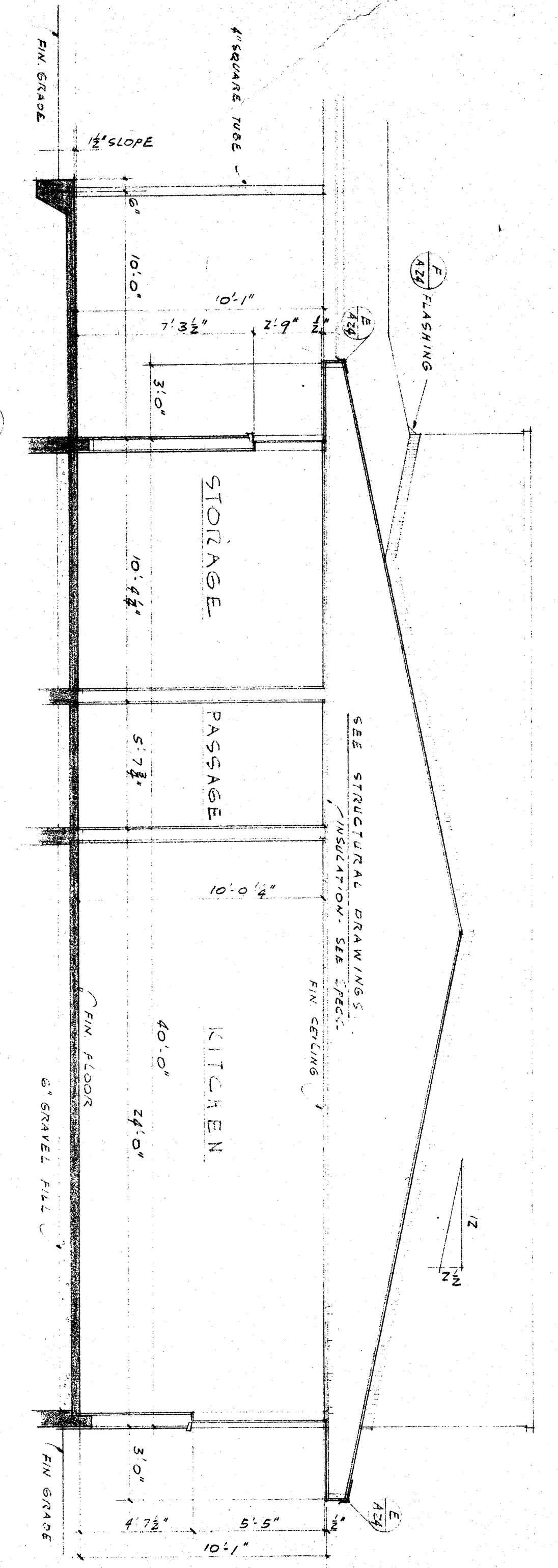
SECTION A13 SCIENCE ROOM



SECTION A14 DINING ROOM



SECTION A15 ADMINISTRATION



SECTION A16 KITCHEN

SECTIONS SCALE 1/4" = 1'-0"		CHECK AND VERIFY ALL DIMENSIONS BEFORE PROCEEDING WITH THE WORK. REPORT ANY DISCREPANCIES TO ARCHITECT.	
BAKERSFIELD CITY SCHOOLS 1600 ST. BAKERSFIELD CALIFORNIA BOARD OF EDUCATION PRELIMINARY APPROVAL DATE 11/10/58 ARCHITECT ERNEST L. MCCOY	COUNTY OF KERN OFFICE OF SUPERINTENDENT OF SCHOOLS JESSE D. STOCKTON SUPERINTENDENT	STATE OF CALIFORNIA DEPARTMENT OF PUBLIC WORKS DIVISION OF ARCHITECTURE APPROVED DATE 3/1/59 ARCHITECT ERNEST L. MCCOY	BAKERSFIELD CITY SCHOOLS 1600 ST. BAKERSFIELD CALIFORNIA BOARD OF EDUCATION JUNIOR HIGH SCHOOL BAKERSFIELD CITY SCHOOL DISTRICT 511 P. STREETS BAKERSFIELD CALIFORNIA ARCHITECT ERNEST L. MCCOY 1612 - 19th ST. BAKERSFIELD CALIFORNIA