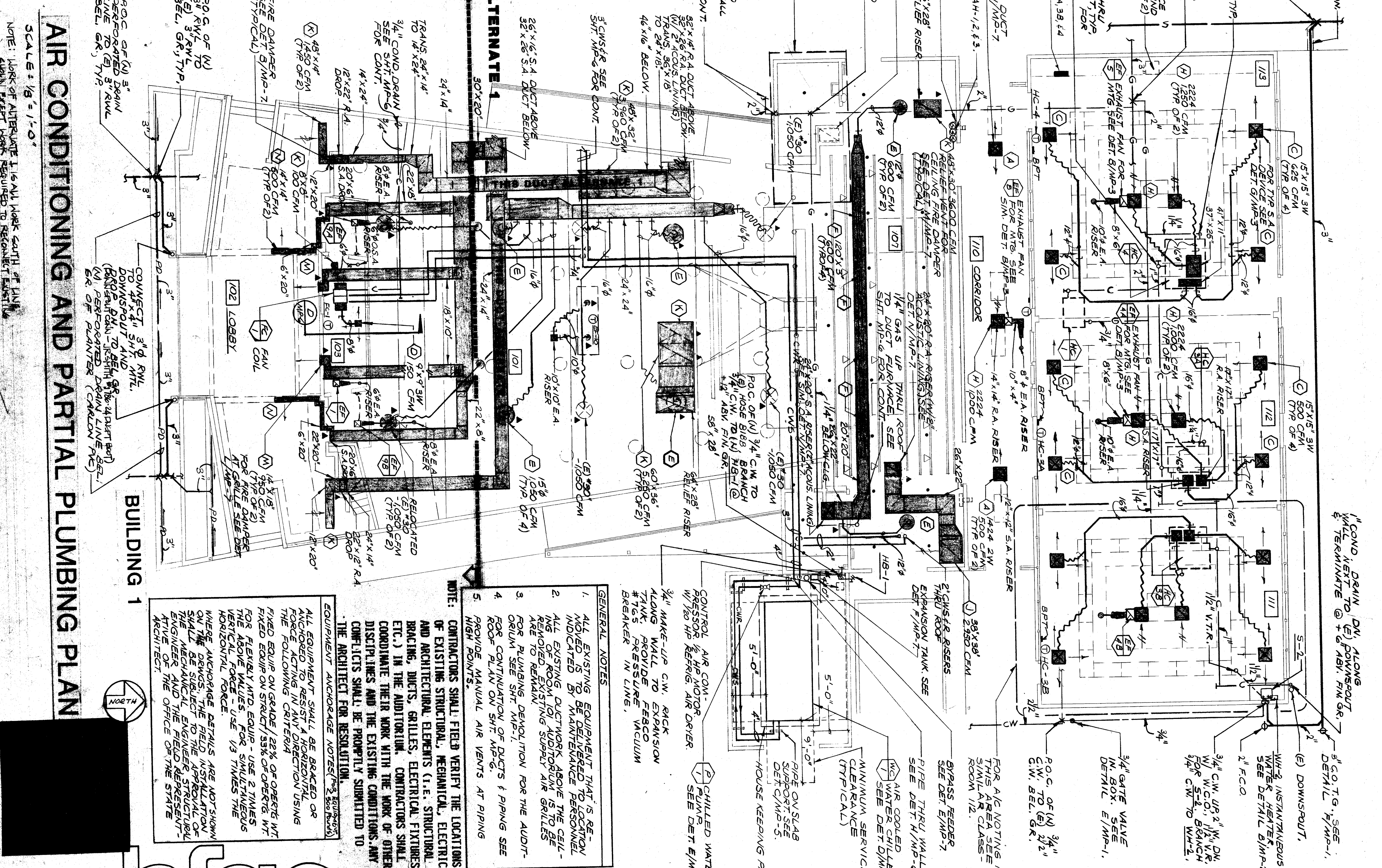


AIR CONDITIONING LEGEND	
SYMBOL	NOTE
ROOF DUCT	ROOF DUCT
SHEET METAL DUCT	SHEET METAL DUCT
DUCT WITH ACOUSTIC LINING	DUCT WITH ACOUSTIC LINING
SUPPLY AIR DUCT DROP	SUPPLY AIR DUCT DROP
RETURN AIR DUCT DROP	RETURN AIR DUCT DROP
RETURN AIR DUCT RISE	RETURN AIR DUCT RISE
EXHAUST AIR DUCT RISE	EXHAUST AIR DUCT RISE
TURNING VANES	TURNING VANES
EXTRACTOR	EXTRACTOR
VOLUME CONTROL DAMPER	VOLUME CONTROL DAMPER
FIRE DAMPER WITH FIRE STOP	FIRE DAMPER WITH FIRE STOP
DIRTY AIR	DIRTY AIR
DIRECTION OF FLOW	DIRECTION OF FLOW
SUPPLY AIR	SUPPLY AIR
RETURN AIR	RETURN AIR
EXHAUST AIR	EXHAUST AIR
OUTSIDE AIR	OUTSIDE AIR
PIPE OR DUCT TURN DOWN	PIPE OR DUCT TURN DOWN
PIPE OR DUCT TURN UP	PIPE OR DUCT TURN UP
BY PASS THRU	BY PASS THRU
EXISTING (DESIGNATED)	EXISTING (DESIGNATED)
CHILLED WATER RETURN	CHILLED WATER RETURN
CHILLED WATER SUPPLY	CHILLED WATER SUPPLY
BUTTERFLY VALVE	BUTTERFLY VALVE
GATE VALVE	GATE VALVE
PLUG VALVE	PLUG VALVE
PRESSURE RELIEF VALVE	PRESSURE RELIEF VALVE
INTERMITTENT BELT	INTERMITTENT BELT
STRAINER	STRAINER
FLEXIBLE CONNECTION	FLEXIBLE CONNECTION
REMOVER OR INCREASER	REMOVER OR INCREASER
ZELEVAL DUCT	ZELEVAL DUCT
TRIP SWITCH 5-5-0	TRIP SWITCH 5-5-0



NOTE: LACK OF AIRPATTERN IS 1/8" ALL WORK SOUTH OF LINE. 4" MIN. DUCT WORK REQUIRED TO RECONNECT EXISTING OR RELOCATED DUCTS.

GENERAL NOTES:

1. ALL EXISTING EQUIPMENT THAT IS INDICATED IS TO BE MAINTAINED TO REMAIN UNLESS OTHERWISE NOTED.
2. ALL EXISTING DUCTWORK IS TO BE MAINTAINED TO REMAIN UNLESS OTHERWISE NOTED.
3. ALL EXISTING SUPPLY AIR GRILLES ARE TO BE MAINTAINED TO REMAIN UNLESS OTHERWISE NOTED.
4. ROOF CONTINUATION OF DUCTS & PIPING SEE HIGH POINTS.
5. PROVIDE MANUAL AIR VENTS AT PIPING HIGH POINTS.

CONTRACTORS SHALL VERIFY THE LOCATIONS OF EXISTING STRUCTURAL, MECHANICAL, ELECTRICAL AND ARCHITECTURAL ELEMENTS (I.E. STRUCTURAL BRACING, DUCTS, GRILLES, ELECTRICAL FIXTURES, ETC.) IN THE ADDITIONAL, CONTRACTORS SHALL COORDINATE THEIR WORK WITH THE WORK OF OTHER DISCIPLINES AND THE EXISTING CONDITIONS. ANY CONFLICTS SHALL BE PROBABLY SUBMITTED TO THE ARCHITECT FOR RESOLUTION.

EQUIPMENT ANCHORAGE NOTES:

ALL EQUIPMENT SHALL BE ANCHORED OR BOLTED TO RESIST A HORIZONTAL FORCE ACTING IN ANY DIRECTION USING THE FOLLOWING IN ANY DIRECTION USING THE FOLLOWING:

- 1. 1/2" DIA. ANCHORS FOR 1/2" DIA. EQUIPMENT.
- 2. 3/4" DIA. ANCHORS FOR 3/4" DIA. EQUIPMENT.
- 3. 1" DIA. ANCHORS FOR 1" DIA. EQUIPMENT.

THESE ANCHORAGE DETAILS ARE NOT SHOWN WHERE THE EQUIPMENT IS TO BE INSTALLED OR WHERE THE MECHANICAL FIELD REPRESENTATIVE OF THE OFFICE OF THE STATE ARCHITECT.

REVISIONS

NO.	DATE	DESCRIPTION
1	10/1/00	ISSUED FOR PERMIT
2	10/1/00	ISSUED FOR PERMIT

David P. Ghezzi
Principal
David P. Ghezzi & Associates
Mechanical, Electrical, Plumbing
1000 15th Street, Suite 1000
Denver, CO 80202
Tel: 303.733.1111
Fax: 303.733.1112

David P. Ghezzi
Principal
David P. Ghezzi & Associates
Mechanical, Electrical, Plumbing
1000 15th Street, Suite 1000
Denver, CO 80202
Tel: 303.733.1111
Fax: 303.733.1112

C. 1128
C. 3132
C. 3133
C. 3134
C. 3135
C. 3136
C. 3137
C. 3138
C. 3139
C. 3140
C. 3141
C. 3142
C. 3143
C. 3144
C. 3145
C. 3146
C. 3147
C. 3148
C. 3149
C. 3150
C. 3151
C. 3152
C. 3153
C. 3154
C. 3155
C. 3156
C. 3157
C. 3158
C. 3159
C. 3160
C. 3161
C. 3162
C. 3163
C. 3164
C. 3165
C. 3166
C. 3167
C. 3168
C. 3169
C. 3170
C. 3171
C. 3172
C. 3173
C. 3174
C. 3175
C. 3176
C. 3177
C. 3178
C. 3179
C. 3180
C. 3181
C. 3182
C. 3183
C. 3184
C. 3185
C. 3186
C. 3187
C. 3188
C. 3189
C. 3190
C. 3191
C. 3192
C. 3193
C. 3194
C. 3195
C. 3196
C. 3197
C. 3198
C. 3199
C. 3200

David P. Ghezzi
Principal
David P. Ghezzi & Associates
Mechanical, Electrical, Plumbing
1000 15th Street, Suite 1000
Denver, CO 80202
Tel: 303.733.1111
Fax: 303.733.1112

David P. Ghezzi
Principal
David P. Ghezzi & Associates
Mechanical, Electrical, Plumbing
1000 15th Street, Suite 1000
Denver, CO 80202
Tel: 303.733.1111
Fax: 303.733.1112