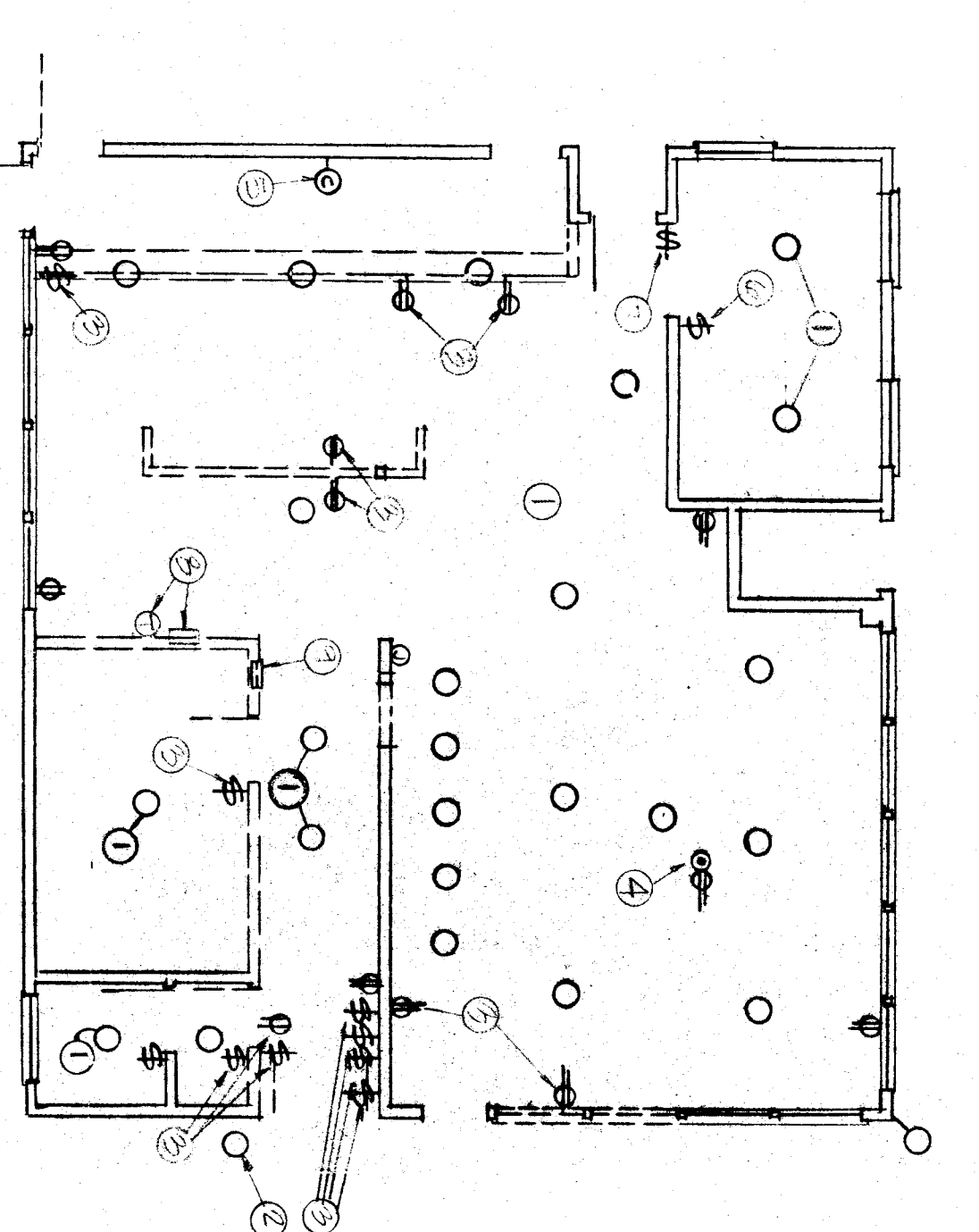
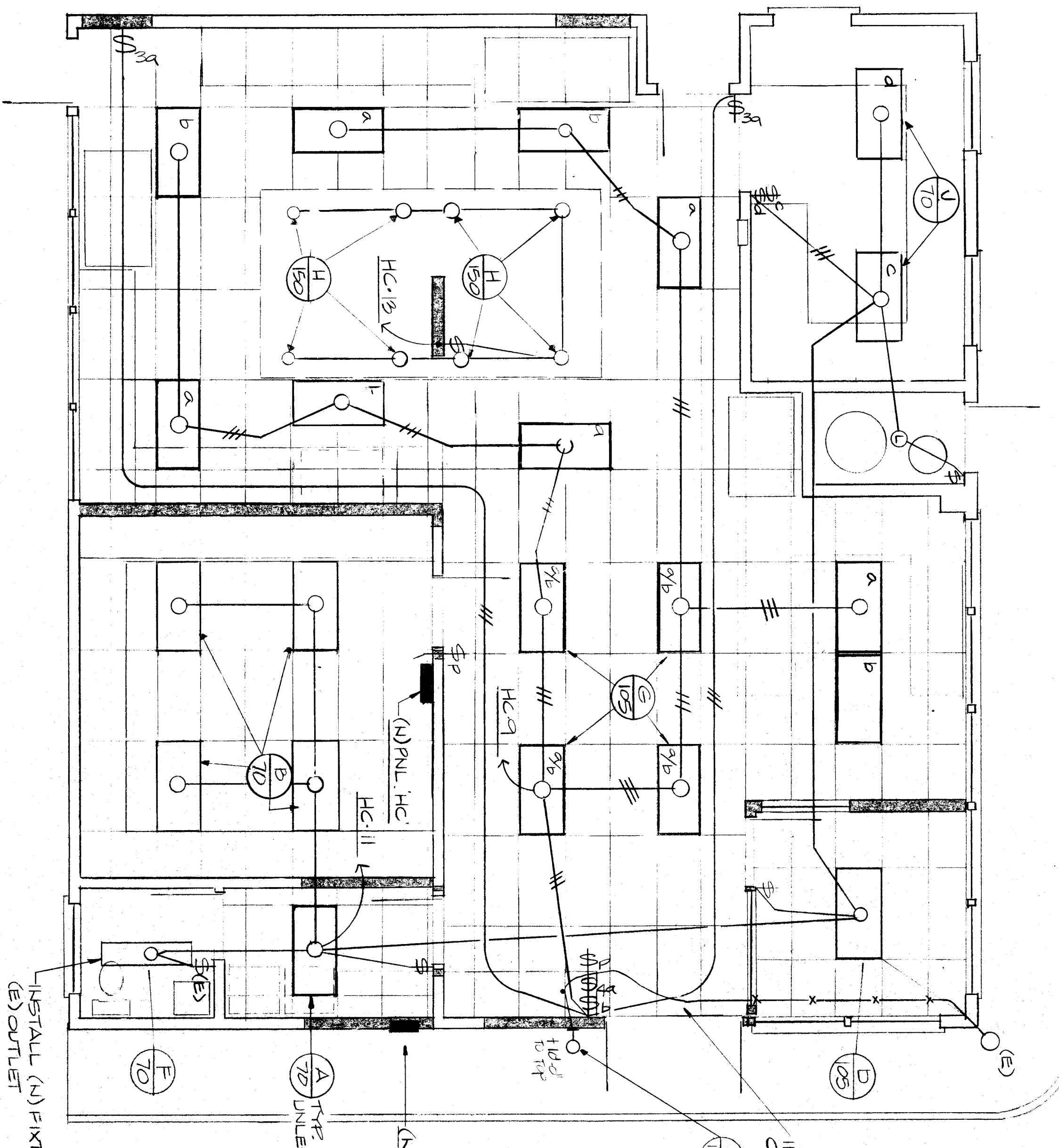


- DEMOLITION NOTES:
- EXISTING LIGHTS TO BE REMOVED THROUGHOUT KITCHEN AREA.
 - EXISTING EXTENSION LIGHT TO BE REMOVED.
 - EXISTING DEVICE TO BE REMOVED.
 - EXISTING FLOOR OUTLET TO BE REMOVED AND OPENING BLANKED OFF.
 - EXISTING SWITCH TO REMAIN - NO CHANGE.
 - EXISTING SWITCH TO BE REMOVED AND TWO (2) NEW SWITCHES INSTALLED AT SAME LOCATION.
 - EXISTING THERMOSTAT AND EXISTING WALL HEATER TO BE REMOVED, RELOCATED AND RECONNECTED-SEE POWER PLAN.
 - EXISTING PANEL "HC" TO BE REMOVED. INTERCEPT EXISTING OVERHEAD FEEDERS AND EXTEND TO NEW PANEL "HC" AND RECONNECT - SEE POWER PLAN. INSTALL NEW FLUSH FLOOR PULLBOX WITH GASKETED COVER IN NEW PANEL "HC" AND RECONNECT EXISTING SLAB TO NEW PANEL "HC" AND EXTEND EXISTING FEEDERS TO NEW PANEL "HC" AND RECONNECT. PULLBOX COVER MUST HAVE UNOBSTRUCTED ACCESS - COORDINATE LOCATION WITH OTHER TRADES.
 - SEE ARCHITECTURAL PLANS AND SPECIFICATIONS FOR ADDITIONAL DEMOLITION REQUIREMENTS.
 - IT IS THE CONTRACTOR'S RESPONSIBILITY TO VERIFY SITE CONDITIONS PRIOR TO BID.
 - CONTRACTOR MAY USE EXISTING CONDUIT AND BOXES WHERE APPLICABLE.

TYPE	DESCRIPTION	LAMP	MTG.	VOLTAGE	REMARKS
A	METALLUX #20C-240V	2-F40	REC	120V	
B	METALLUX #20C-240V	2-F40	REC	120V	
C	STAR #20 4-TIP	100W	WALL	120V	
D	METALLUX #20C-240V	3-F40	REC	120V	
E	METALLUX #20C-240V	2-F40	90NF	120V	
F	METALLUX #20C-240V	3-F40	REC	120V	
G	METALLUX #20C-240V	3-F40	REC	120V	
H	METALLUX #20C-240V	3-F40	REC	120V	
J	METALLUX #20C-240V	3-F40	REC	120V	



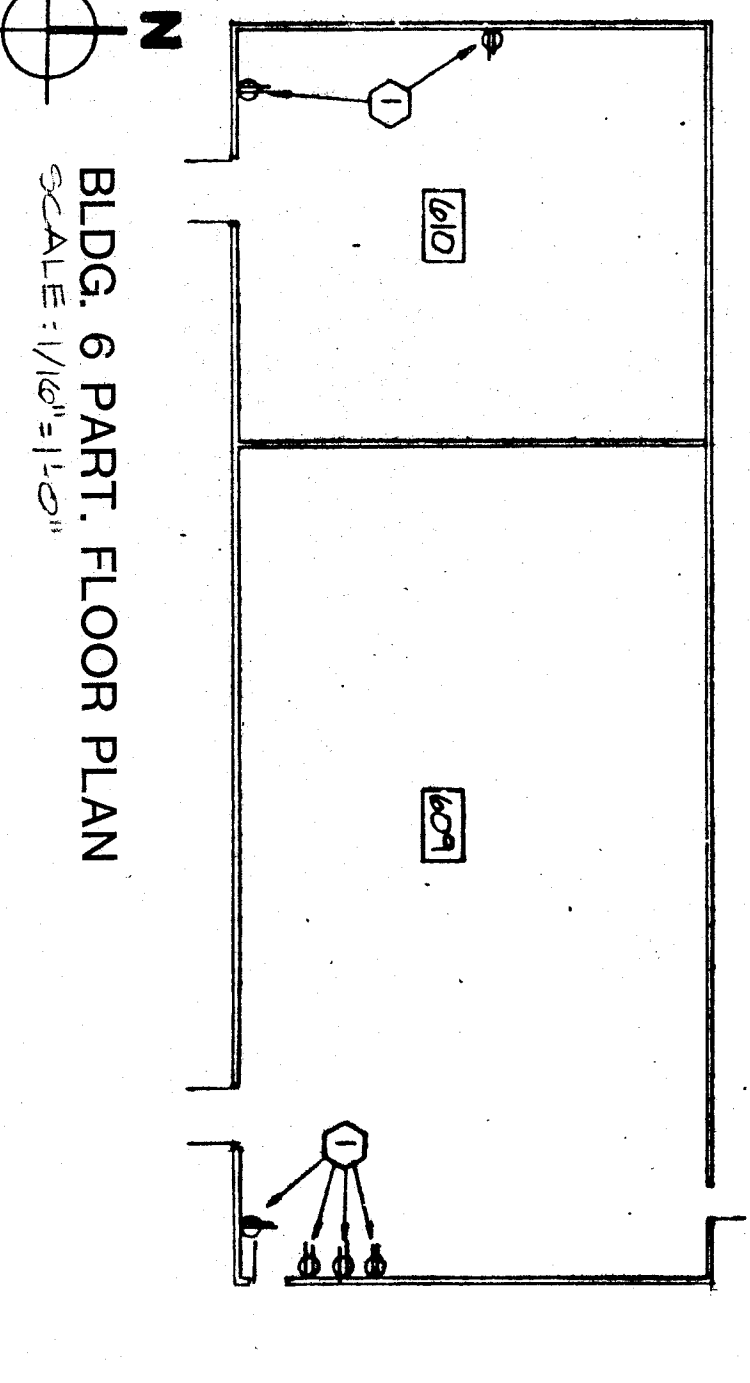
FLOOR PLAN - DEMOLITION
SCALE: 1/4" = 1'-0"



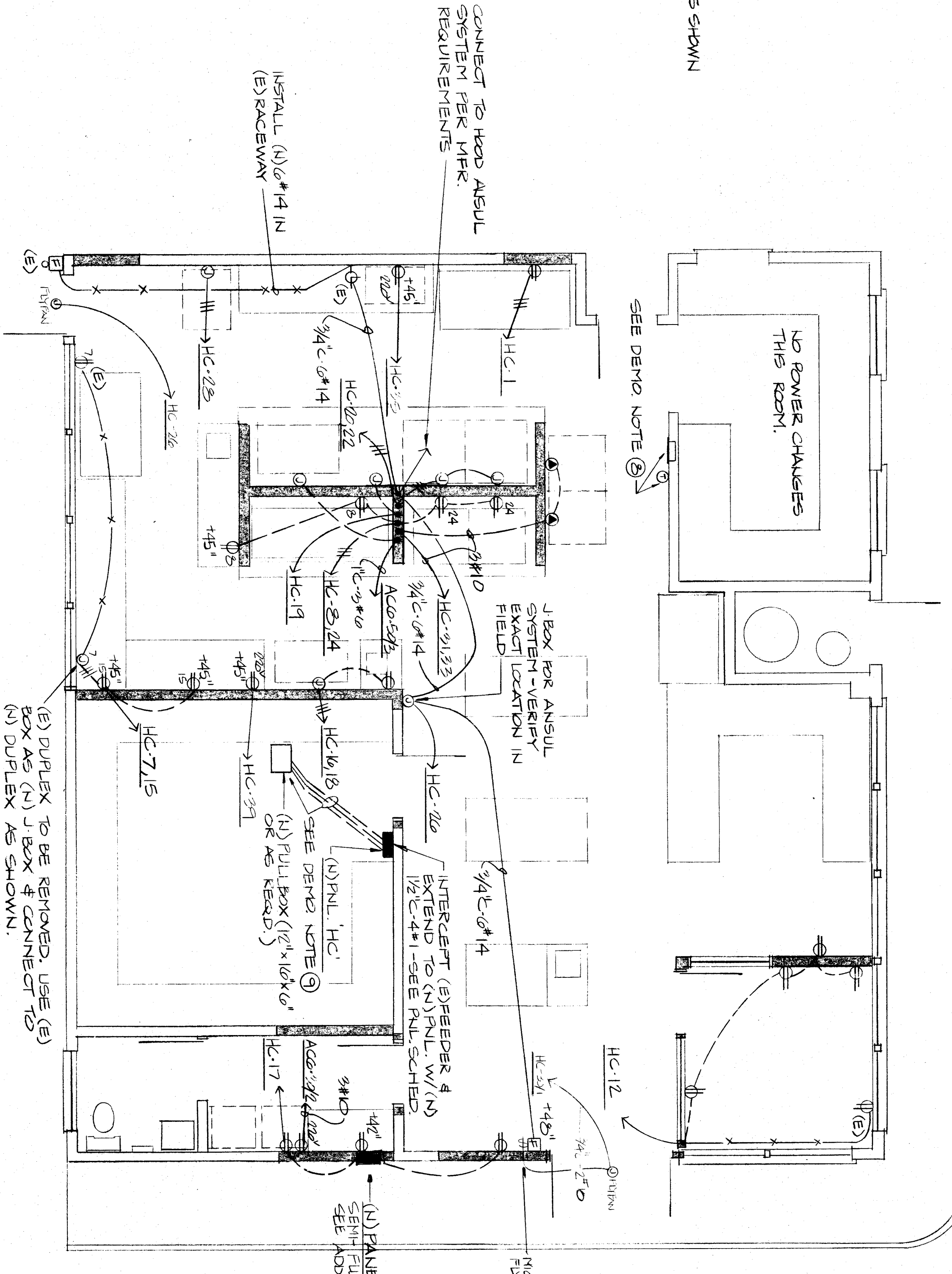
FLOOR PLAN - LIGHTING
SCALE: 1/4" = 1'-0"

CIRCUIT	WATTAGE	USE	LOAD-TYPE	TYPE		CIRCUIT WATTAGE
				LOAD-TYPE	USE	
1000	0.0	USE	1	1	0.0	0.0
1000	0.0	USE	2	2	0.0	0.0
1000	0.0	USE	3	3	0.0	0.0
1000	0.0	USE	4	4	0.0	0.0
1000	0.0	USE	5	5	0.0	0.0
1000	0.0	USE	6	6	0.0	0.0
1000	0.0	USE	7	7	0.0	0.0
1000	0.0	USE	8	8	0.0	0.0
1000	0.0	USE	9	9	0.0	0.0
1000	0.0	USE	10	10	0.0	0.0
1000	0.0	USE	11	11	0.0	0.0
1000	0.0	USE	12	12	0.0	0.0
1000	0.0	USE	13	13	0.0	0.0
1000	0.0	USE	14	14	0.0	0.0
1000	0.0	USE	15	15	0.0	0.0
1000	0.0	USE	16	16	0.0	0.0
1000	0.0	USE	17	17	0.0	0.0
1000	0.0	USE	18	18	0.0	0.0
1000	0.0	USE	19	19	0.0	0.0
1000	0.0	USE	20	20	0.0	0.0
1000	0.0	USE	21	21	0.0	0.0
1000	0.0	USE	22	22	0.0	0.0
1000	0.0	USE	23	23	0.0	0.0
1000	0.0	USE	24	24	0.0	0.0
1000	0.0	USE	25	25	0.0	0.0
1000	0.0	USE	26	26	0.0	0.0
1000	0.0	USE	27	27	0.0	0.0
1000	0.0	USE	28	28	0.0	0.0
1000	0.0	USE	29	29	0.0	0.0
1000	0.0	USE	30	30	0.0	0.0
1000	0.0	USE	31	31	0.0	0.0
1000	0.0	USE	32	32	0.0	0.0
1000	0.0	USE	33	33	0.0	0.0
1000	0.0	USE	34	34	0.0	0.0
1000	0.0	USE	35	35	0.0	0.0
1000	0.0	USE	36	36	0.0	0.0
1000	0.0	USE	37	37	0.0	0.0
1000	0.0	USE	38	38	0.0	0.0
1000	0.0	USE	39	39	0.0	0.0
1000	0.0	USE	40	40	0.0	0.0
1000	0.0	USE	41	41	0.0	0.0
1000	0.0	USE	42	42	0.0	0.0
1000	0.0	USE	43	43	0.0	0.0
1000	0.0	USE	44	44	0.0	0.0
1000	0.0	USE	45	45	0.0	0.0
1000	0.0	USE	46	46	0.0	0.0
1000	0.0	USE	47	47	0.0	0.0
1000	0.0	USE	48	48	0.0	0.0
1000	0.0	USE	49	49	0.0	0.0
1000	0.0	USE	50	50	0.0	0.0
1000	0.0	USE	51	51	0.0	0.0
1000	0.0	USE	52	52	0.0	0.0
1000	0.0	USE	53	53	0.0	0.0
1000	0.0	USE	54	54	0.0	0.0
1000	0.0	USE	55	55	0.0	0.0
1000	0.0	USE	56	56	0.0	0.0
1000	0.0	USE	57	57	0.0	0.0
1000	0.0	USE	58	58	0.0	0.0
1000	0.0	USE	59	59	0.0	0.0
1000	0.0	USE	60	60	0.0	0.0
1000	0.0	USE	61	61	0.0	0.0
1000	0.0	USE	62	62	0.0	0.0
1000	0.0	USE	63	63	0.0	0.0
1000	0.0	USE	64	64	0.0	0.0
1000	0.0	USE	65	65	0.0	0.0
1000	0.0	USE	66	66	0.0	0.0
1000	0.0	USE	67	67	0.0	0.0
1000	0.0	USE	68	68	0.0	0.0
1000	0.0	USE	69	69	0.0	0.0
1000	0.0	USE	70	70	0.0	0.0
1000	0.0	USE	71	71	0.0	0.0
1000	0.0	USE	72	72	0.0	0.0
1000	0.0	USE	73	73	0.0	0.0
1000	0.0	USE	74	74	0.0	0.0
1000	0.0	USE	75	75	0.0	0.0
1000	0.0	USE	76	76	0.0	0.0
1000	0.0	USE	77	77	0.0	0.0
1000	0.0	USE	78	78	0.0	0.0
1000	0.0	USE	79	79	0.0	0.0
1000	0.0	USE	80	80	0.0	0.0
1000	0.0	USE	81	81	0.0	0.0
1000	0.0	USE	82	82	0.0	0.0
1000	0.0	USE	83	83	0.0	0.0
1000	0.0	USE	84	84	0.0	0.0
1000	0.0	USE	85	85	0.0	0.0
1000	0.0	USE	86	86	0.0	0.0
1000	0.0	USE	87	87	0.0	0.0
1000	0.0	USE	88	88	0.0	0.0
1000	0.0	USE	89	89	0.0	0.0
1000	0.0	USE	90	90	0.0	0.0
1000	0.0	USE	91	91	0.0	0.0
1000	0.0	USE	92	92	0.0	0.0
1000	0.0	USE	93	93	0.0	0.0
1000	0.0	USE	94	94	0.0	0.0
1000	0.0	USE	95	95	0.0	0.0
1000	0.0	USE	96	96	0.0	0.0
1000	0.0	USE	97	97	0.0	0.0
1000	0.0	USE	98	98	0.0	0.0
1000	0.0	USE	99	99	0.0	0.0
1000	0.0	USE	100	100	0.0	0.0

NOTE: EXISTING OUTLETS & SURFACE WIREHEADS TO BE REMOVED. REPLACE EXISTING OUTLETS FLUSH MOUNTED IN WALL & RUN NEW CONDUIT & CONDUCTORS CONCEALED IN WALL.



BLDG. 6 PART. FLOOR PLAN
SCALE: 1/4" = 1'-0"



FLOOR PLAN - POWER
SCALE: 1/4" = 1'-0"

SYMBOL	NAME	DESCRIPTION
○	CEILING FIXTURE	SEE PLANS & FIXTURE SCHEDULE
○	WALL BRACKET FIXTURE	SEE PLANS & FIXTURE SCHEDULE
○	RECESSED FIXTURE	SEE PLANS & FIXTURE SCHEDULE
○	FLOOR MOUNTED FIXTURE	SEE PLANS & FIXTURE SCHEDULE
○	FLOOR LIGHT	SEE PLANS & FIXTURE SCHEDULE
○	PORCELAIN RECEPTACLE	PULL CHAIN IF "PC"
○	FIXTURE CT. 2 LOCAL SWITCH-SA	SEE FIXTURE SCHEDULE
○	LOCAL SWITCH	20A - AC QUIET 277V
○	3-WAY SWITCH	20A - AC QUIET 277V
○	4-WAY SWITCH	20A - AC QUIET 277V
○	MANUAL STARTER	NEON IN HANDLE
○	SWITCH W/PULL LITE	MATAGE AS REQUIRED
○	DIMMER SWITCH	20A NEMA GROUNDING
○	DUPLX CONVENIENCE OUTLET	20A NEMA GROUNDING
○	CONVENIENCE OUTLET - 1/2 SM.	NEMA 5-20K RECEPT.
○	SPECIAL OUTLET	
○	WEATHERPROOF CONV. OUTLET	
○	JUNCTION BOX - AS REQUIRED	
○	CLOCK OUTLET	45 BOX & FLUSH PLATE MINIMUM
○	THERMOSTAT	REFER TO MECH. PLAN & SPEC.
○	1" V. ANTENNA OUTLET	AS REQUIRED. MINIMUM 1" C.
○	TELEPHONE OUTLET	FITTINGS AS REQUIRED
○	FLOOR OUTLET	REFER TO MECH. PLAN & SPEC.
○	EXHAUST FAN	REFER TO MECH. PLAN & SPEC.
○	MOTOR W/DISCONNECT SK.	REFER TO PANEL SCHEDULE
○	ELEC. PANEL	40006660 - GE
○	PHOTO CELL	UNLESS OTHERWISE NOTED
○	WIRING IN CEILING	MINIMUM 1" CONDUIT
○	TELEPHONE RACKWAY	SIZE & ENCLOSURE AS REQUIRED
○	TERMINAL CABINET	
○	LOCAL MAGNETIC STARTER	
○	DENOTES EXISTING ITEM	
○	DENOTES NEW ITEM	
○	FA PULL STATION	

ADDENDUM #1

INTERSTATE ENGINEERING, INC. ARCHITECTS PLANNERS

DAVID P. GATNE

blgc inc. architects planners

BLAIR LEARNING CENTER RECONSTRUCTION 900 belle terrace, bakersfield, california

DATE: 10/2

DATE: 10/2

DATE: 10/2