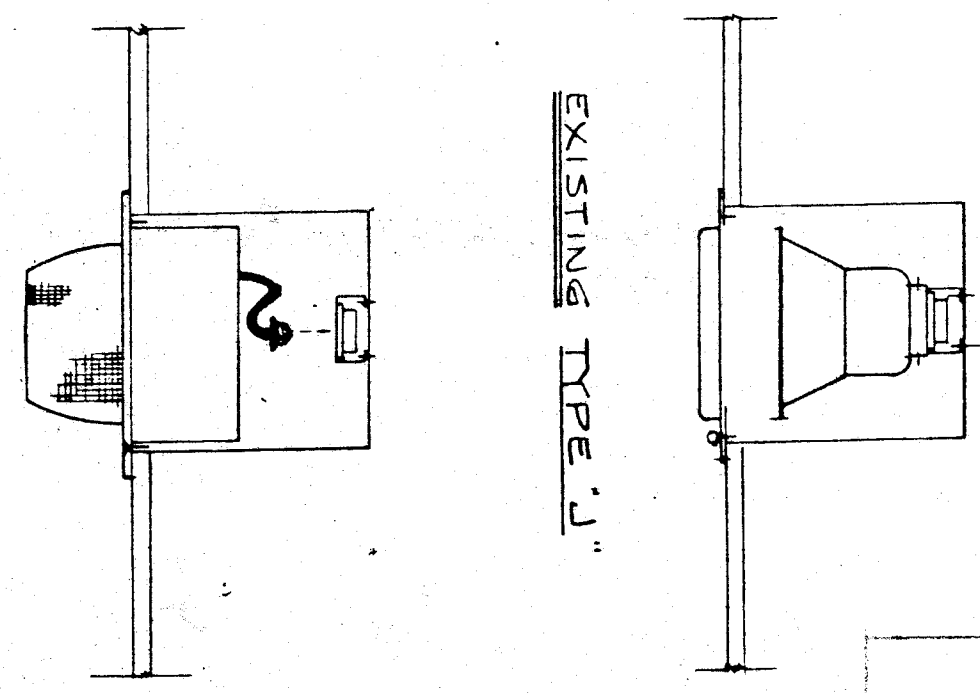
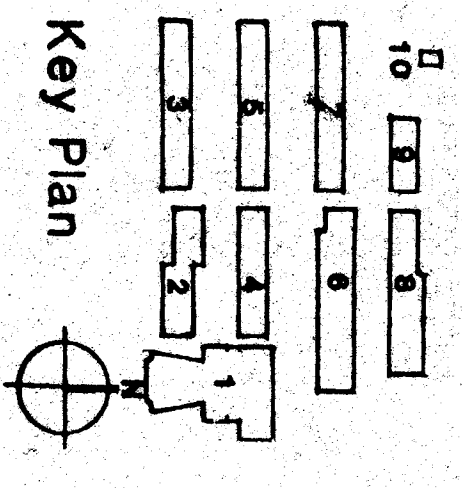
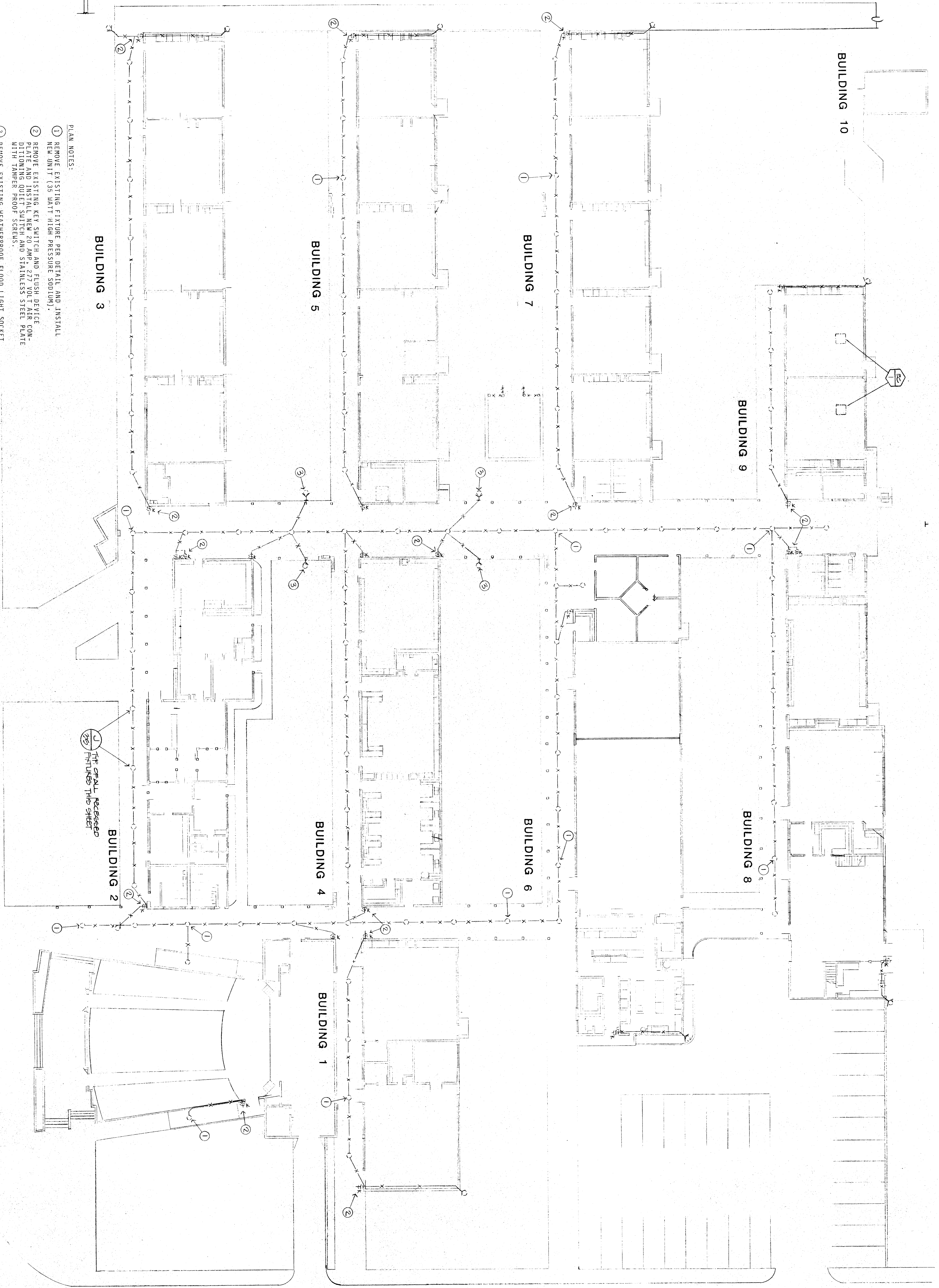
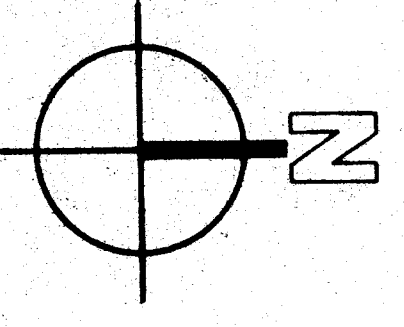


- EXISTING FIXTURE NOTES:**
1. REMOVE DOOR AND LENS.
 2. REMOVE REFLECTOR.
 3. LEAVE SOCKET AND SOCKET HOLDER IN PLACE (REPLACE EXISTING SOCKET IF NECESSARY).
- NEW FIXTURE NOTES:**
1. INSTALL NEW "J" FIXTURE, USING NEW HARDWARE AND SCREEN IN SOCKET ADAPTOR.
 2. HINGE INTO POSITION AND SECURE WITH SINGLE PASTER.



- PLAN NOTES:**
1. REMOVE EXISTING FIXTURE PER DETAIL AND INSTALL NEW JN1 (35 WATT HIGH PRESSURE SODIUM).
 2. REMOVE EXISTING KEY SWITCH AND FLUSH DEVICE (CONDITIONING QUIET SWITCH AND STAINLESS STEEL PLATE WITH TAPER PROOF SCREWS).
 3. REMOVE EXISTING WEATHERPROOF FLOOD LIGHT SOCKET AND INSTALL GASKETED BLANK COVER.
 4. ELECTRICAL CONTRACTOR TO CHECK EACH CIRCUIT AND TO LABEL SAME IN PANEL.
 5. CONTRACTOR TO PROVIDE OWNER TWO SPARE FIXTURES FOR FUTURE MAINTENANCE USE.
 6. SHOULD CONTRACTOR FIND BAD CONDUCTORS, ETC., THE CONTRACTOR SHALL NOTIFY THE ARCHITECT AND ENGINEER IN WRITING PRIOR TO INSTALLATION.

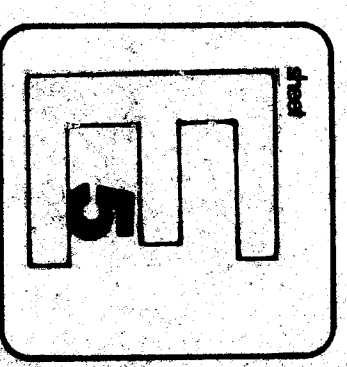
FLOOR PLAN - LIGHTING
SCALE 1/8" = 1'-0"



FLOOR PLAN - LIGHTING

**BLAIR LEARNING CENTER
RECONSTRUCTION**
900 belle terrace, bakersfield, california

DATE 3-27-1985



INTERSTATE ENGINEERING, INC.
ELECTRICAL ENGINEERING
1000 W. 10TH ST. SUITE 100
BAKERSFIELD, CALIFORNIA 93306
TEL. 833-1111

C-1128
C-3289
C-3132
C-6544
Dave P. Quetta

Biggar Frapwell Ghezzi Carnal
37 South, architect's office
Bakersfield, California 93309
805 832 812
© copyright 1985