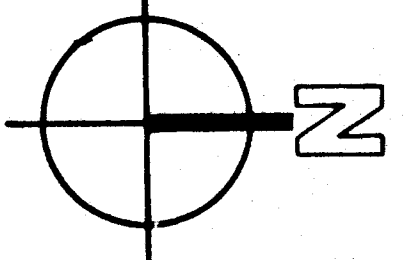
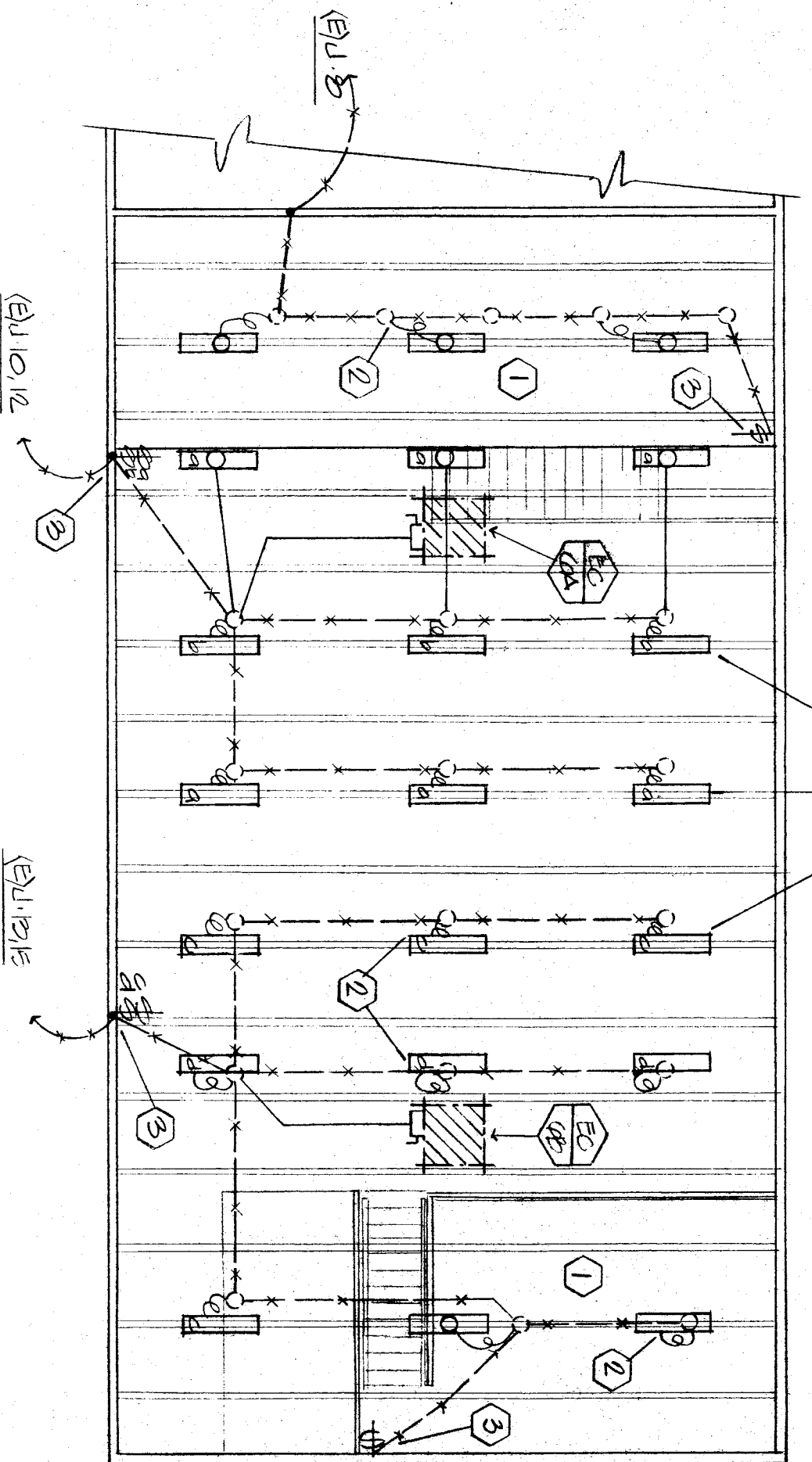


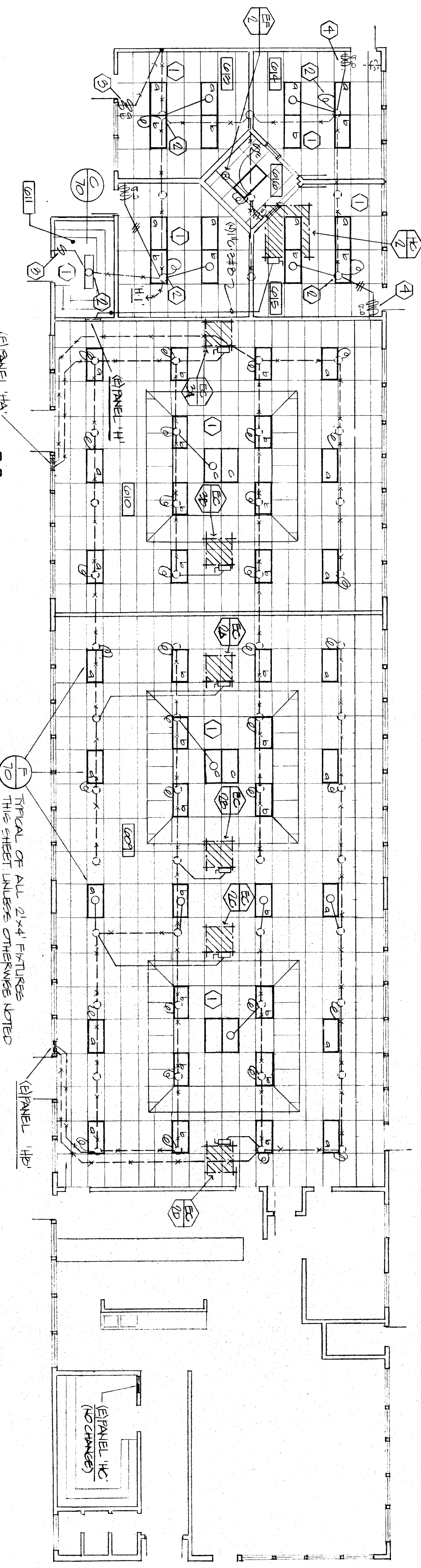
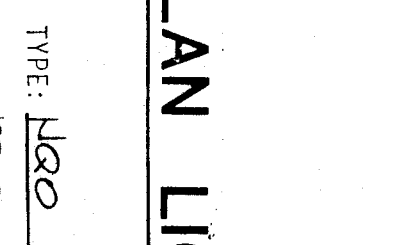
**BUILDING 8  
FLOOR PLAN LIGHTING**  
SCALE: 1/8"=1'-0"



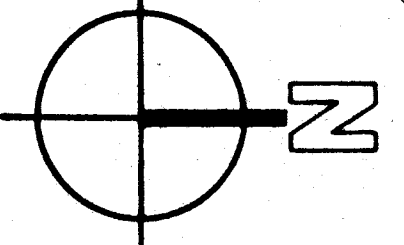
- GENERAL NOTES TYPICAL THIS SHEET:
- EXISTING LIGHT FIXTURES IN THIS ROOM TO BE REMOVED BY ELECTRICAL CONTRACTOR.
  - CONNECT NEW FIXTURES TO EXISTING OUTLET AS SHOWN.
  - INSTALL NEW SWITCHES IN EXISTING SWITCH BOX WHERE SHOWN.
  - CUT AND PATCH WALLS AS REQUIRED FOR CONCEALED ELECTRICAL INSTALLATION.
  - RECONNECT ALL CIRCUITS AS INDICATED TO EXISTING PANEL AND INSTALL NEW SCHEDULE.
  - REMOVE EXISTING PANEL FRONT AND INTERIOR, FLUSH CAN MAY BE REUSED IF APPLICABLE.
  - REUSE EXISTING BREAKER IN PANEL "H" AS INDICATED.



**BUILDING 8  
MEZZANINE FLOOR PLAN LIGHTING**  
SCALE: 1/8"=1'-0"



**BUILDING 6  
FLOOR PLAN LIGHTING**  
SCALE: 1/8"=1'-0"



PANEL: (E) 1A

VOLTAGE & PHASE: 120/208V 3PH 4W

TYPE: (E) 1A

TRN: (E) 1A

BUS: (E) 1A

CKT NO	BREAKER	FL	RA	BB	RC	TYPE OF LOAD	WATTS	REMARKS
1	100	120	120	120	120	GENERAL	1000	REMOVED
2	100	120	120	120	120	GENERAL	1000	REMOVED
3	100	120	120	120	120	GENERAL	1000	REMOVED
4	100	120	120	120	120	GENERAL	1000	REMOVED
5	100	120	120	120	120	GENERAL	1000	REMOVED
6	100	120	120	120	120	GENERAL	1000	REMOVED
TOTAL WATTS							6000	
TOTAL AMPS							17.32	

PANEL: (E) 1B

VOLTAGE & PHASE: 120/208V 3PH 4W

TYPE: (E) 1B

TRN: (E) 1B

BUS: (E) 1B

CKT NO	BREAKER	FL	RA	BB	RC	TYPE OF LOAD	WATTS	REMARKS
1	100	120	120	120	120	GENERAL	1000	REMOVED
2	100	120	120	120	120	GENERAL	1000	REMOVED
3	100	120	120	120	120	GENERAL	1000	REMOVED
4	100	120	120	120	120	GENERAL	1000	REMOVED
5	100	120	120	120	120	GENERAL	1000	REMOVED
6	100	120	120	120	120	GENERAL	1000	REMOVED
TOTAL WATTS							6000	
TOTAL AMPS							17.32	

PANEL: (E) 1C

VOLTAGE & PHASE: 120/208V 3PH 4W

TYPE: (E) 1C

TRN: (E) 1C

BUS: (E) 1C

CKT NO	BREAKER	FL	RA	BB	RC	TYPE OF LOAD	WATTS	REMARKS
1	100	120	120	120	120	GENERAL	1000	REMOVED
2	100	120	120	120	120	GENERAL	1000	REMOVED
3	100	120	120	120	120	GENERAL	1000	REMOVED
4	100	120	120	120	120	GENERAL	1000	REMOVED
5	100	120	120	120	120	GENERAL	1000	REMOVED
6	100	120	120	120	120	GENERAL	1000	REMOVED
7	100	120	120	120	120	GENERAL	1000	REMOVED
8	100	120	120	120	120	GENERAL	1000	REMOVED
9	100	120	120	120	120	GENERAL	1000	REMOVED
10	100	120	120	120	120	GENERAL	1000	REMOVED
11	100	120	120	120	120	GENERAL	1000	REMOVED
12	100	120	120	120	120	GENERAL	1000	REMOVED
13	100	120	120	120	120	GENERAL	1000	REMOVED
14	100	120	120	120	120	GENERAL	1000	REMOVED
15	100	120	120	120	120	GENERAL	1000	REMOVED
16	100	120	120	120	120	GENERAL	1000	REMOVED
17	100	120	120	120	120	GENERAL	1000	REMOVED
18	100	120	120	120	120	GENERAL	1000	REMOVED
19	100	120	120	120	120	GENERAL	1000	REMOVED
20	100	120	120	120	120	GENERAL	1000	REMOVED
21	100	120	120	120	120	GENERAL	1000	REMOVED
22	100	120	120	120	120	GENERAL	1000	REMOVED
23	100	120	120	120	120	GENERAL	1000	REMOVED
24	100	120	120	120	120	GENERAL	1000	REMOVED
25	100	120	120	120	120	GENERAL	1000	REMOVED
26	100	120	120	120	120	GENERAL	1000	REMOVED
27	100	120	120	120	120	GENERAL	1000	REMOVED
28	100	120	120	120	120	GENERAL	1000	REMOVED
29	100	120	120	120	120	GENERAL	1000	REMOVED
30	100	120	120	120	120	GENERAL	1000	REMOVED
31	100	120	120	120	120	GENERAL	1000	REMOVED
32	100	120	120	120	120	GENERAL	1000	REMOVED
33	100	120	120	120	120	GENERAL	1000	REMOVED
34	100	120	120	120	120	GENERAL	1000	REMOVED
35	100	120	120	120	120	GENERAL	1000	REMOVED
36	100	120	120	120	120	GENERAL	1000	REMOVED
TOTAL WATTS							36000	
TOTAL AMPS							104.4	

PANEL: (E) 1D

VOLTAGE & PHASE: 120/208V 3PH 4W

TYPE: (E) 1D

TRN: (E) 1D

BUS: (E) 1D

CKT NO	BREAKER	FL	RA	BB	RC	TYPE OF LOAD	WATTS	REMARKS
1	100	120	120	120	120	GENERAL	1000	REMOVED
2	100	120	120	120	120	GENERAL	1000	REMOVED
3	100	120	120	120	120	GENERAL	1000	REMOVED
4	100	120	120	120	120	GENERAL	1000	REMOVED
5	100	120	120	120	120	GENERAL	1000	REMOVED
6	100	120	120	120	120	GENERAL	1000	REMOVED
7	100	120	120	120	120	GENERAL	1000	REMOVED
8	100	120	120	120	120	GENERAL	1000	REMOVED
9	100	120	120	120	120	GENERAL	1000	REMOVED
10	100	120	120	120	120	GENERAL	1000	REMOVED
11	100	120	120	120	120	GENERAL	1000	REMOVED
12	100	120	120	120	120	GENERAL	1000	REMOVED
13	100	120	120	120	120	GENERAL	1000	REMOVED
14	100	120	120	120	120	GENERAL	1000	REMOVED
15	100	120	120	120	120	GENERAL	1000	REMOVED
16	100	120	120	120	120	GENERAL	1000	REMOVED
17	100	120	120	120	120	GENERAL	1000	REMOVED
18	100	120	120	120	120	GENERAL	1000	REMOVED
19	100	120	120	120	120	GENERAL	1000	REMOVED
20	100	120	120	120	120	GENERAL	1000	REMOVED
21	100	120	120	120	120	GENERAL	1000	REMOVED
22	100	120	120	120	120	GENERAL	1000	REMOVED
23	100	120	120	120	120	GENERAL	1000	REMOVED
24	100	120	120	120	120	GENERAL	1000	REMOVED
25	100	120	120	120	120	GENERAL	1000	REMOVED
26	100	120	120	120	120	GENERAL	1000	REMOVED
27	100	120	120	120	120	GENERAL	1000	REMOVED
28	100	120	120	120	120	GENERAL	1000	REMOVED
29	100	120	120	120	120	GENERAL	1000	REMOVED
30	100	120	120	120	120	GENERAL	1000	REMOVED
TOTAL WATTS							36000	
TOTAL AMPS							104.4	

Approved: \_\_\_\_\_

\_\_\_\_\_

\_\_\_\_\_

\_\_\_\_\_

INTERSTATE ENGINEERING, INC.

C. 1128  
C. 3289  
C. 3132  
C. 8684

DAVID R. GENTILE

BLAIR LEARNING CENTER  
RECONSTRUCTION  
900 belle terrace, bakersfield, california

\_\_\_\_\_

Key Plan