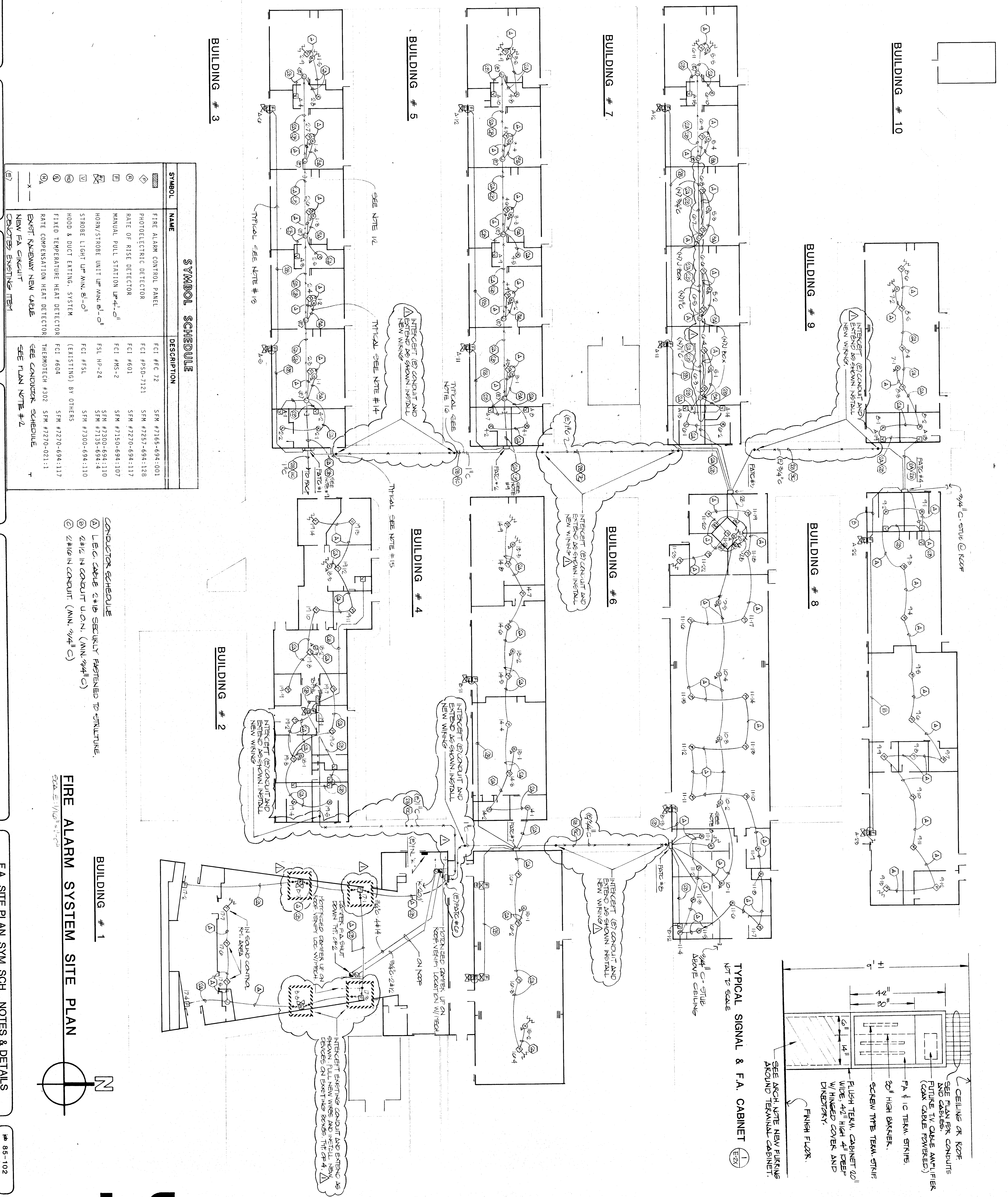


FIRE DETECTION SYSTEM NOTES:

1. ALL WIRING IS SHOWN DIAGRAMMATICALLY. CONTRACTOR MAY VARY SEQUENCE OR CIRCUITRY, HOWEVER ALL CIRCUITS SHALL BE CONTINUOUS AND SUPERVISED FROM DEVICE TO DEVICE OR BRANCHING SHALL BE ALLOWED. ANY CONNECTION OF ANY BREAK IN ANY CONDUCTOR, SHALL BE BY TERMINAL CONNECTION AT A DEVICE OR AT A PULL ONLY.
2. ALL CONNECTIONS SHALL BE PROPERLY LABELED BY CONDUCTOR NUMBER.
3. FA TERMINAL CABINETS SHALL HAVE SUFFICIENT SPACE, TERMINAL BOARDS AND SCREW TERMINAL CONNECTIONS TO ALLOW CONNECTION OF ALL CONDUCTORS IS SHOWN. CONTRACTOR SHALL BE RESPONSIBLE FOR THE PROPER LABELING OF ALL FA TERMINAL CABINET PRIOR TO COMMENCING ANY WORK.
4. ALL CONDUCTORS SHOWN SHALL BE #16 AWG. SOLID COPPER UNLESS OTHERWISE NOTED.
5. WRITTEN CERTIFICATION BY THE FIRE ALARM EQUIPMENT INSTALLER AND THE STATE FIRE MARSHAL) AND THAT THE INSTALLATION INCLUDES TESTING AND OPERATION FROM THE 19 OF THE CALIFORNIA ADMINISTRATIVE CODE AND PART 3, ARTICLE 3-760 OF TITLE 24 OF THE C.A.C. AND SECTION 2-809 OF PART 2 OF 1-28 C.A.C.
6. INSTALLATION OF THE FIRE ALARM SYSTEMS SHALL NOT BE STARTED UNTIL WORKING DRAWINGS, INCLUDING STATE FIRE MARSHAL'S APPROVAL AND APPROVED BY THE STATE FIRE MARSHAL AT THE OFFICE OF THE STATE ARCHITECT.

GENERAL NOTES:

1. IDENTIFYING NUMBERS ADJACENT TO DETECTOR SYMBOLS DENOTE ORDER OF WIRING. DETECTOR 1-2 WOULD IDENTIFY SYMBOL AND DETECTOR IN ZONE 1.
2. WIRING RUNS ARE SHOWN DIAGRAMMATICALLY. EXACT LOCATION OF ALL EQUIPMENT TO BE DETERMINED IN FIELD.
3. ALL WIRING MUST CONFORM TO LOCAL CODES.
4. ALL DETECTOR AND AUDIBLE ALARM DEVICE CIRCUIT WIRING MUST BE PERMISSIBLE.
5. DETECTOR AND AUDIBLE ALARM DEVICE CIRCUIT POLARITY MUST BE OBSERVED.
6. DETECTORS SHALL NOT BE LOCATED IN DIRECT AIR STREAM FROM THE SUPPLY AIR OUTLETS.
7. ALL CONDUIT PENETRATIONS THROUGH FIRE RATED WALLS AND FLOORS SHALL BE SEALED TO MAINTAIN THE FIRE SEPARATION RATING.
8. THE KITCHEN HOOD AND DUCT EXHAUSTING SYSTEM INTO THE FIRE ALARM SYSTEM BY UTILIZING DRY CONTACTS LOCATED IN HOOD AND DUCT CONTROL PANEL.
9. NEW CONDUIT - TIE INTO EXISTING J-BOX. QUANTITY OF CONDUITS AS SHOWN.
10. LEC CABLE - WHITE IN COLOR #970 WEST PENN WIRE CORP.
11. RUN ALL CABLES CONCEALED ABOVE NEW CEILINGS AND CONCEALED IN WALLS.
12. USE EXISTING CONDUIT AT CEILINGS WHERE APPLICABLE IN BUILDINGS 3, 5 AND 7.
13. ALL PULL STATIONS AND HORN CIRCUITS TO BE IN 3/4" COPPER MINIMUM. WHERE DETECTOR CIRCUITS ARE CALLED FOR, THESE MAY BE INSTALLED IN ABOVE MEDIUM.
14. LOW ENERGY CABLE FOR DETECTOR CIRCUITS MAY BE RUN WITH-OUT RACKWAY (NO CONDUIT REQUIRED) CONCEALED WHERE POSSIBLE.
15. SEE ARCHITECTURAL NOTE FOR FURRING AROUND NEW TERMINAL CABINETS.
16. CONDUITS RUN IN ATTIC OVER PASSAGeways, REMOVE AND REPLACE ROOF SHEATHING AS REQUIRED FOR INSTALLATION.
17. ADJUST PULL STATION AND HORN LOCATIONS IN FIELD AS REQUIRED TO MISS WINDOWS, ETC.
18. PROVIDE AND INSTALL METAL SIGNS INDICATING "FA PULL STATION INSIDE" AT EACH DOOR WHERE A PULL STATION IS SHOWN.
19. ANY SURFACE EXPOSED CIRCUITS AND CONDUITS TO BE APPROVED BY ARCHITECT/ENGINEER PRIOR TO INSTALLATION.



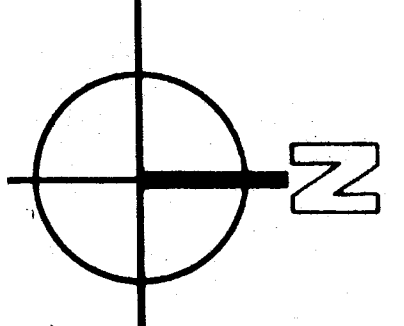
| SYMBOL SCHEDULE | | |
|-----------------|---------------------------------|---------------------------------|
| SYMBOL | NAME | DESCRIPTION |
| ⊗ | FIRE ALARM CONTROL PANEL | FAC #FC 72 SPM #7165-694:101 |
| ⊙ | PHOTOELECTRIC DETECTOR | FCE #P20-7121 SPM #7267-694:128 |
| ⊖ | RATE OF RISE DETECTOR | FCE #E01 SPM #7270-694:117 |
| ⊕ | MANUAL PULL STATION | FCE #MS-2 SPM #7150-694:107 |
| ⊙ | HORN/STROBE UNIT | FSL #H-24 SPM #7300-694:110 |
| ⊕ | STROBE LIGHT | FCE #FSL SPM #7300-694:110 |
| ⊖ | HOOD & DUCT EXTING. SYSTEM | (EXISTING) BY OTHERS |
| ⊕ | FIXED TEMPERATURE HEAT DETECTOR | FCI #E04 SPM #7270-694:117 |
| ⊖ | RATE COMPENSATION HEAT DETECTOR | FCI #E04 SPM #7270-694:117 |
| ⊕ | EXIST. RACKWAY NEW CABLE | SEE CADD/CDR SCHEDULE |
| ⊕ | NEW FA CIRCUIT | SEE PLAN NOTE #2 |
| ⊕ | BRACKET EXISTING ITEM | |

CONDUCTOR SCHEDULE

- ① L.E.C. CABLE 2#16 SECURITY FASTENED TO STRUCTURE.
- ② 2#12 IN CONDUIT U.O.N. (MIN. 3/4" C)
- ③ 2#10 IN CONDUIT (MIN. 3/4" C)

FIRE ALARM SYSTEM SITE PLAN

Scale: 1/4" = 1'-0"



Approved

DATE

BY

PROJECT

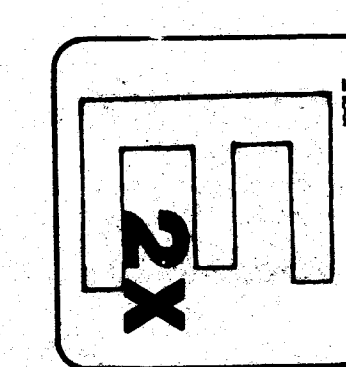
INTERSTATE ENGINEERING, INC.

C-3388
C-3392
C-3554
DAVID P. QUAY

bigc inc.
architects planners
31 south real road box 9898
Bakersfield California 93309
805 832 8122

FA, SITE PLAN, SYM. SCH., NOTES & DETAILS
BLAIR LEARNING CENTER
KERN COUNTY SUPERINTENDENT OF SCHOOLS
BAKERSFIELD CA.

NO 85-102
AUG. 11, 87



bigc architects - planners