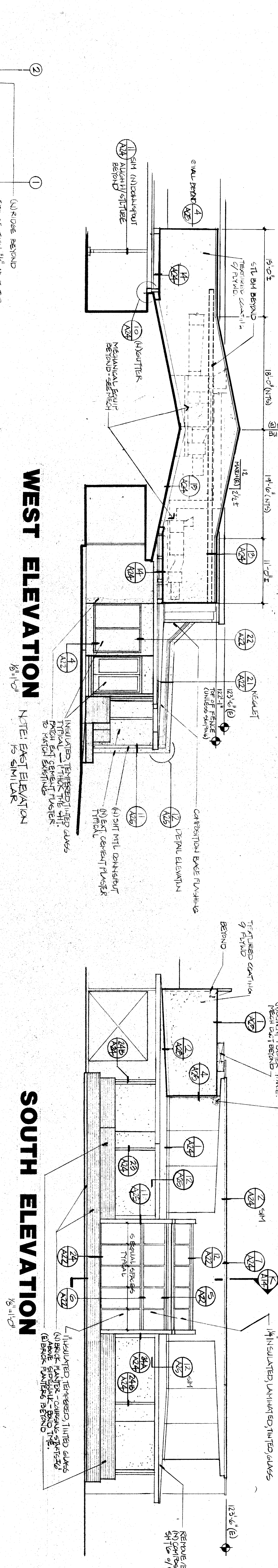
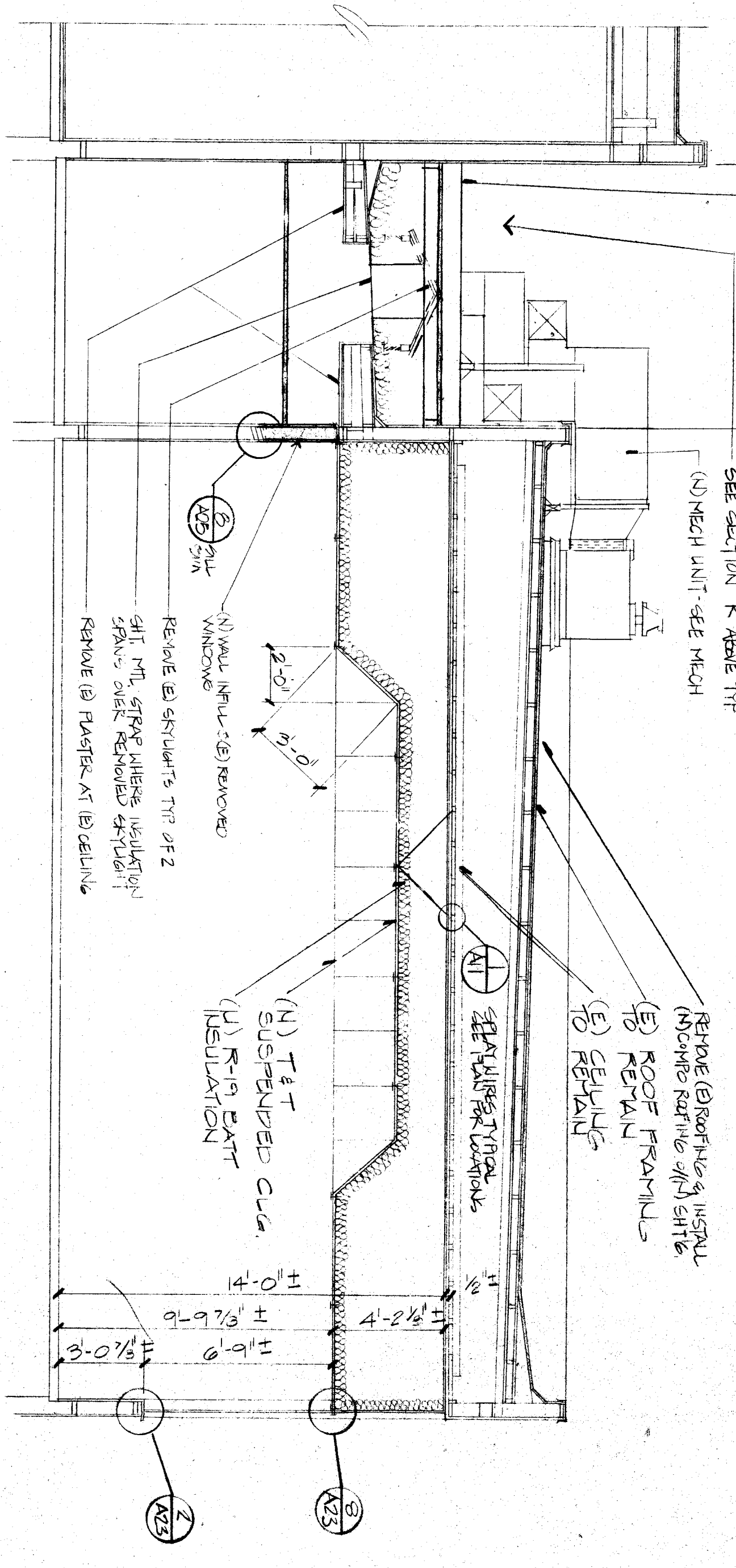


SECTION K
1/8" = 1'-0"



WEST ELEVATION
1/8" = 1'-0"

SOUTH ELEVATION
1/8" = 1'-0"



SECTION J
1/8" = 1'-0"

ALTERNATE 1

C-1128
 C-3288
 C-5524
DAVID R. QUINN
 Biggar Frapwell Ghezzi Cartnal
 3000 South Redwood Road
 Berkeley, California 94702
 415.863.8322
 © copyright 1996

SECTIONS ELEVATIONS
BLAIR LEARNING CENTER
RECONSTRUCTION
 900 belle terrace bakerfield, california

No 05/02
 Date 3 Oct 1996